



ConnexModem

**User's Manual
Version 2.0**



**10981 EICHER DRIVE
LENEXA, KS 66219
(800) 492-2320**

www.aerocomm.com
sales@aerocomm.com

Copyright Information

Copyright © 2001 AEROCOMM, Inc. All rights reserved. The information contained in this manual and the accompanying software programs are copyrighted and all rights are reserved by AEROCOMM, Inc. AEROCOMM, Inc. reserves the right to make periodic modifications of this product without obligation to notify any person or entity of such revision. Copying, duplicating, selling, or otherwise distributing any part of this product without the prior consent of an authorized representative of AEROCOMM, Inc. is prohibited.

All brands and product names in this publication are registered trademarks or trademarks of their respective holders.

This material is preliminary

Information furnished by AEROCOMM in this specification is believed to be accurate. Devices sold by AEROCOMM are covered by the warranty and patent indemnification provisions appearing in its Terms of Sale only. AEROCOMM makes no warranty, express, statutory, and implied or by description, regarding the information set forth herein. AEROCOMM reserves the right to change specifications at any time and without notice.

AEROCOMM's products are intended for use in normal commercial applications. Applications requiring extended temperature range or unusual environmental requirements such as military, medical life-support or life-sustaining equipment are specifically not recommended without additional testing for such application.

Limited Warranty

For a period of one (1) year from the date of purchase, AEROCOMM warrants the transceiver against defects in materials and workmanship. AEROCOMM will not honor this warranty (and this warranty will be automatically void) if there has been any:

- (1) Tampering, signs of tampering, or opening the transceiver's case.
- (2) Use of AC power adapters and cables other than those originally supplied with the transceivers.
- (3) Repair or attempt to repair by anyone other than an AEROCOMM authorized technician.

This warranty does not cover and AEROCOMM will not be liable for, any damage or failure caused by misuse, abuse, acts of God, accidents, electrical irregularity, or other causes beyond AEROCOMM's control, or claim by other than the original purchaser.

FCC Information

FCC Notice



WARNING: This device complies with Part 15 of the FCC Rules. Operation is subject to the following two conditions: (1) This device may not cause harmful interference and (2) This device must accept any interference received, including interference that may cause undesired operation.

RF Exposure/Installation Instructions (For CM5124-200-232 and CL5124-200-232)



WARNING: To satisfy FCC RF exposure requirements for mobile transmitting devices, this equipment must be professionally installed such that the end user is prevented from replacing the antenna with a nonapproved antenna. The end user should also be prevented from being within 20cm of the antenna during normal use with the exception of hands, feet and ankles.

Caution: Any change or modification not expressly approved by AeroComm could void the user's authority to operate the equipment.

The preceding statement must be included as a CAUTION statement in manuals for OEM products to alert users on FCC RF Exposure compliance.

USER'S MANUAL	1
1. OVERVIEW	5
1.1 CONNEXMODEM & CONNEXLINK DEFINITIONS	5
2. WINDOWS MODEM SETUP & CONFIGURATION	5
2.1 AUTO-ANSWER FEATURE	10
3. CONNECTING TO A NON-PC DEVICE	11
4. TROUBLESHOOTING	11

1. Overview

The ConnexModem and ConnexLink products provide a wireless point-to-point connection between a RS232 device and a 56K data/fax modem.

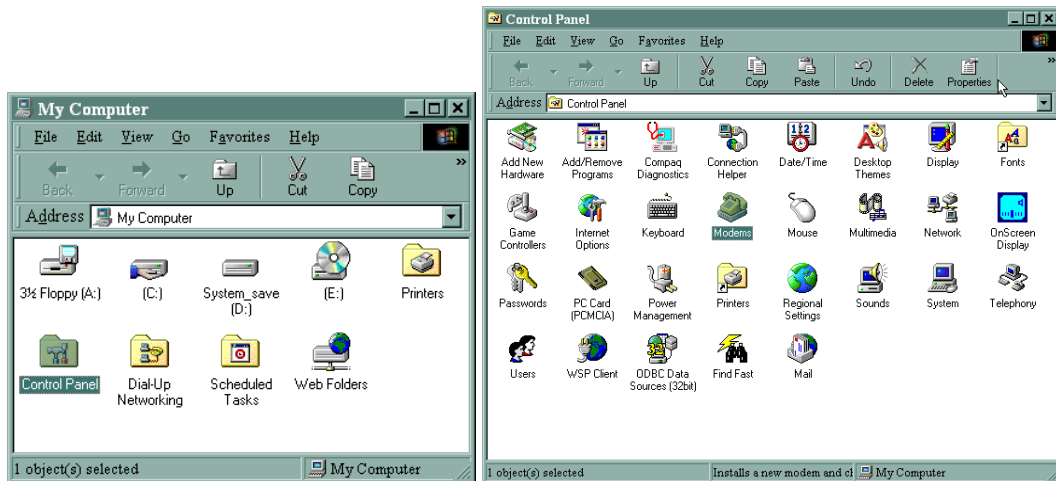
1.1 ConnexModem & ConnexLink Definitions

1. **Pwr:** Red LED indicates power is connected to the unit.
2. **Link:** Green LED indicates the units are in range of one another.
3. **Rx:** Red LED indicates a unit is receiving data.
4. **Tx:** Green LED indicates a unit is sending data.
5. **Dual RJ11 Jack:** There are 2 standard telephone jacks on the ConnexModem unit. The phone line can be connected to either jack. The other jack can be connected to a telephone.

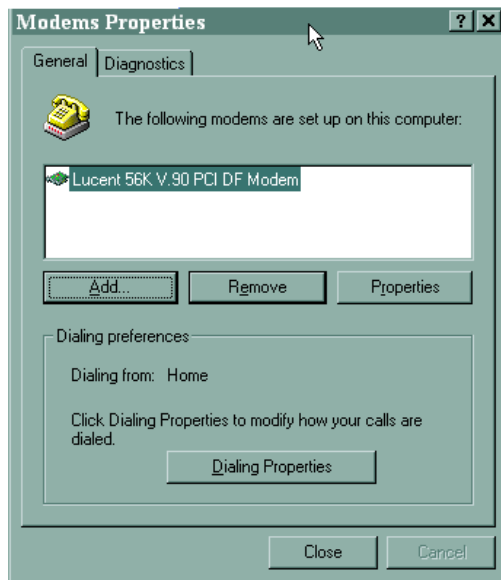
2. Windows Modem Setup & Configuration

When connecting the ConnexLink to a computer running Windows 95, 98, Me, 2000, or NT, the correct modem driver must be installed and properly configured. Please follow the steps and diagrams below to complete the setup and configuration.

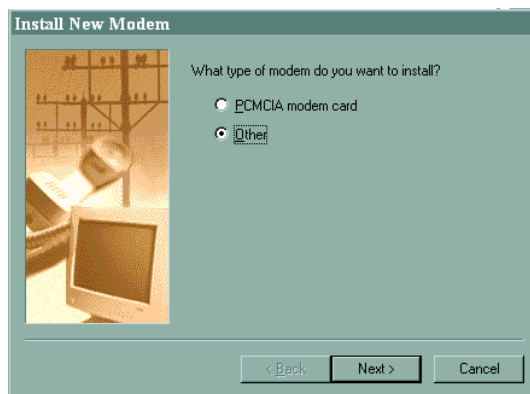
1. Double-click on **My Computer** on the desktop, double-click on **Control Panel**, double-click **Modems** to display the **Modems Properties** window.



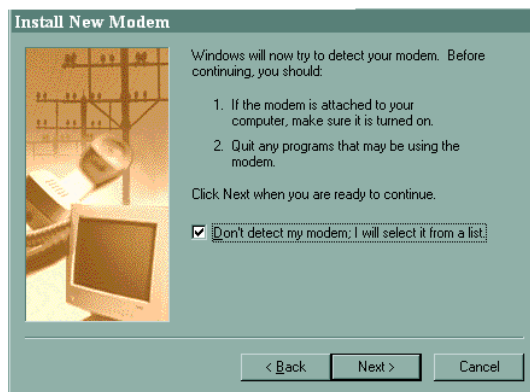
2. If the **Standard 56000 bps K56Flex Modem** is not installed, click **Add...** to install a new modem.



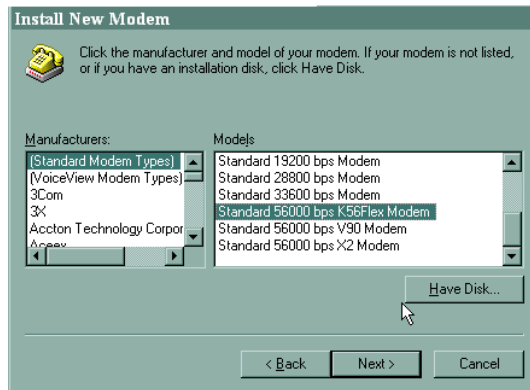
3. Select **Other** when asked what type of modem you want to install, then click on **Next>**.



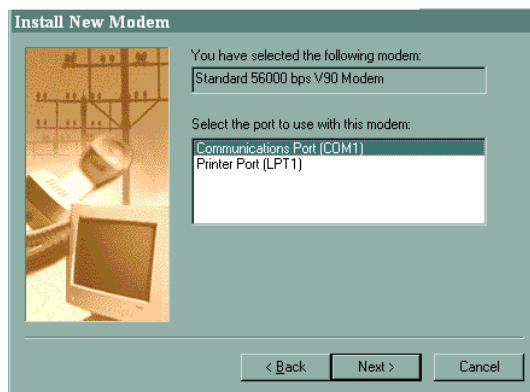
4. Select **"Don't detect my modem; I will select it from a list"**. Then select **Next>**.



5. Select “**(Standard Modem Types)**” from the Manufacturers list, then select “**Standard 56000 bps K56Flex Modem**” from the Models list. Click **Next>** to continue.



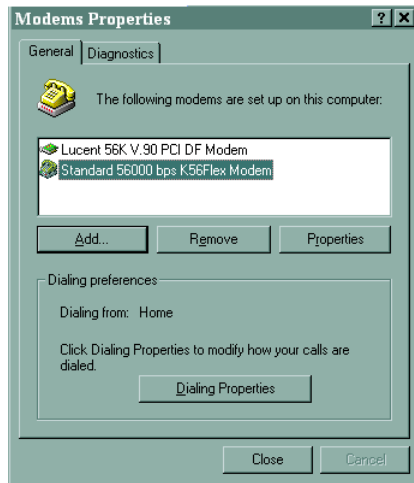
6. Select the port to use with the modem and click **Next>** to continue.



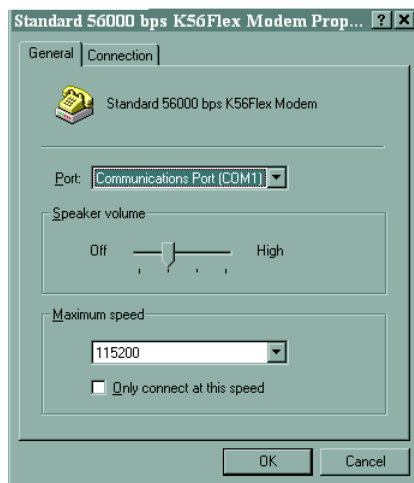
7. Wait while Windows installs the modem. Click **Finish** to complete the installation of the new modem and to return to the **Modems Properties** window.



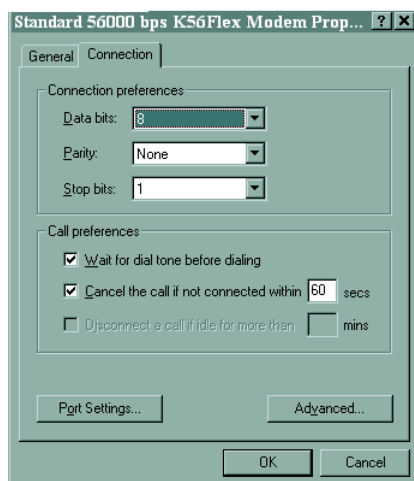
- You are now ready to configure the new modem. Select “**Standard 56000 bps K56Flex Modem**” and then click **Properties**.



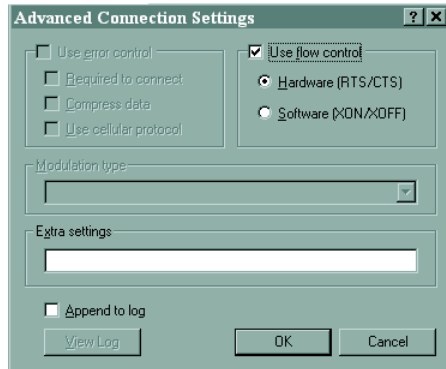
- On the **General** tab, select the port that is connected to the ConnexLink unit. Select **115200** for the Maximum speed. Do not select “**Only connect at this speed**”, as this will not allow communications from the ConnexLink unit to the ConnexModem unit. The selected Baud Rate must match the ConnexLink's Baud Rate setting.



- Click the **Connection** tab. Select **8** Data bits, **None** for Parity, **1** for Stop bits. Select “**Wait for dial tone before dialing**”. Selecting “**Cancel the call if not connected within xx secs**” is optional.



11. Click **Advanced...** to continue. Select **"Use flow control"** and then select **"Hardware (RTS/CTS)"**. Click **OK** to return to the **Standard 56000 bps K56Flex Modem Properties** window. Click **OK** to return to the **Modems Properties** window. Click **Close** to complete the configuration.



2.1 Auto-Answer Feature

This feature enables the ConnexModem unit to answer an incoming call over the phone line. In order to enable this feature, the HyperTerminal program must be opened. HyperTerminal is launched by clicking on the Start icon in Windows and selecting Programs. From the Programs list select Accessories, Communications, then HyperTerminal. Once in HyperTerminal, you must type a name for the connection and click OK. Next to the Connect Using field, select the proper COM Port. Make sure the Baud Rate setting is equal to the ConnexLink's Baud Rate setting, Data Bits equals 8, Parity equals None, Stop Bits Equals 1, and Flow Control equals Hardware. Apply the settings and HyperTerminal is ready to send commands.

ConnexModem configuration: Broadcast, Modem Control and RTS should be enabled.
ConnexLink should be configured with default values and Auto Destination enabled.

Make sure Auto-Answer is enabled on the ConnexModem: (Refer to RC56D ATCRM.PDF for the AT Commands)

- 1) Enable Auto-Answer on the ConnexModem
 - a. Connect the ConnexLink to a computer and start HyperTerminal.
 - b. Type the characters `ATS0 = n` command, where `n` = the number of rings to Auto-Answer.

This command sets the `S0` parameter to a value other than zero to enable Auto-Answer. `S0` sets the number of rings required before the modem automatically answers a call. Setting this parameter to zero disables auto-answer mode.

- 2) Enable DTR On
 - a. Send the `AT&D0` command
- 3) Save the Auto-Answer configuration to a modem Profile, 0 or 1.
 - a. Send the `AT&Wn` command, where `n` = Profile number.
- 4) Depending on the application, the OEM can send the `AT&Yn` to command or `ATZn` command (where `n` = Profile number) to recall the Profile settings.

ATZn performs a Soft Reset and Restores Profile `n`. AT&Yn Designates a Default Reset Profile, which will be used after a hard reset.

The modem is now ready to answer a phone call automatically.

Connect to the ConnexModem using a computer or another telecom Host. Once connected, multiple ConnexLink units can communicate with the ConnexModem.

3. Connecting to a Non-PC Device

When using ConnexModem to connect a non-PC device to a phone line, it is important that the ConnexLink unit is configured properly. The ConnexLink unit must match the serial settings of the non-PC host device

To configure the ConnexLink unit, refer to the ConnexLink User's Manual located on the AeroComm CD or website.

The ConnexModem unit cannot be reconfigured except by AeroComm.

4. Troubleshooting

Please call our toll free technical support number at (800) 492-2320, extension 207. Technical support hours are Monday through Friday, 8:00 am to 5:00 pm Central Standard Time.

Free Manuals Download Website

<http://myh66.com>

<http://usermanuals.us>

<http://www.somanuals.com>

<http://www.4manuals.cc>

<http://www.manual-lib.com>

<http://www.404manual.com>

<http://www.luxmanual.com>

<http://aubethermostatmanual.com>

Golf course search by state

<http://golfingnear.com>

Email search by domain

<http://emailbydomain.com>

Auto manuals search

<http://auto.somanuals.com>

TV manuals search

<http://tv.somanuals.com>