

USER MANUAL

THE PRODUCT PACK	3
PREPARATION & GETTING STARTED.....	3
<i>Before first use</i>	<i>3</i>
<i>Tutorial Presentations.....</i>	<i>3</i>
<i>Points to Note.....</i>	<i>3</i>
ABOUT THE PLAYER.....	4
FEATURES	4
EXTERIOR VIEW & EXPLANATION OF CONTROLS	5
LCD DISPLAY SCREEN	6
INSERTING OR REPLACING A BATTERY	8
BASIC OPERATIONS.....	8
TURNING THE PLAYER ON	8
TURNING THE PLAYER OFF.....	8
PLAYING TRACKS	9
PLAYING RECORDED VOICE FILES	9
PAUSING TRACKS.....	9
SELECTING A TRACK/FILE.....	9
SCROLLING THROUGH MENUS & SUB-MENUS.....	9
FAST-FORWARDING AND FAST-REVERSING	10
INCREASING/DECREASING VOLUME.....	10
HOLD SWITCH - LOCKING THE BUTTONS/KEYS	10
THE MAIN MENU.....	10
MUSIC MODE	11
<i>Entering the Music Mode.....</i>	<i>11</i>
<i>Displaying Lyrics.....</i>	<i>11</i>
RECORD MODE.....	12
<i>Recording.....</i>	<i>12</i>
VOICE MODE.....	13
<i>Replaying Voice Files.....</i>	<i>13</i>
NAVIGATION MODE.....	14
<i>Entering the Navigation sub-menu</i>	<i>14</i>
<i>Changing or selecting a new Folder or File.....</i>	<i>14</i>
SETTINGS MENU.....	15
<i>Equalizer.....</i>	<i>16</i>
<i>Repeat</i>	<i>17</i>
<i>A-B Repeat.....</i>	<i>18</i>
<i>Contrast</i>	<i>18</i>

<i>Backlight</i>	y19
<i>Power Savings</i>	20
<i>Record</i>	20
<i>Default</i>	22
<i>Exit (Settings menu)</i>	22
DELETE MODE	22
<i>Entering the Delete mode</i>	23
ABOUT.....	24
<i>Firmware</i>	24
EXIT	25
CONNECTING THE PLAYER TO A PC	25
DISCONNECTING THE PLAYER FROM A PC.....	25
<i>Windows ME, 2000 & XP users:</i>	26
<i>Windows 98/98SE users:</i>	26
INSTALLATION OF DRIVER SOFTWARE (FOR PCs RUNNING WINDOWS 98SE ONLY).....	26
DIGITAL RIGHTS MANAGEMENT (DRM)	26
TRANSFERRING TRACKS TO THE PLAYER FROM A CD	27
TRANSFERRING DRM9/WMA9 TRACKS TO THE PLAYER	30
COPYING TRACKS & FILES TO (AND FROM) THE PLAYER	31
DELETING FILES FROM THE PLAYER (VIA A PC).....	31
ADDING FOLDERS TO THE PLAYER	31
CHANGING THE NAMES OF FOLDERS ON THE PLAYER	32
TECHNICAL SPECIFICATION	33
UNDERSTANDING THE TECHNICAL SPECIFICATION	34
TROUBLE-SHOOTING.....	35
SAFETY.....	35
WARRANTY.....	35

The *aigo A208* digital audio player is a brand-new generation of portal digital device, which supports multiple music formats (MP3 and WMA). Its high sound quality, reliability and unique appearance makes it not only stand out in its field, but also makes it a pleasure to look at and use. We sincerely hope that your purchase of the *aigo A208* brings you the pleasure and enjoyment you deserve in this digital era.

The Product Pack

The Product Pack (box) for the *aigo A208* contains:

- Ø 1 MP3 Digital Audio Player (“the Player”)
- Ø 1 Earphones
- Ø 1 USB extension lead (for connecting to PC)
- Ø 1 AAA LR03 battery
- Ø 1 User Manual (“the Manual”)
- Ø 1 CD-ROM (containing tutorial presentations & driver software for Windows 98 SE only)

If any of the above items are missing from the Product Pack, contact the Aigo UK Support team using the details provided in the “Warranty” section of this Manual on page 35.

Note: When opening the Product Pack for the first time, be careful when removing the contents, as many of the items contained in the box are fairly small and could fall out without being noticed.

Preparation & Getting Started

Before first use

Before first use of the product, take time to read this User Manual and, if desired, to view the product Tutorial Presentations which are included on the CD-ROM in the Product Pack.

Tutorial Presentations

The Tutorial Presentations included on the CD in the product pack provide a very quick lesson in the basic use of digital audio players. Should you mislay the CD-ROM, these presentations are also available in the Support section of the Aigo UK website, www.aigo.co.uk.

Points to Note

- Ø Set/move the HOLD switch to the OFF position (the opposite way from the arrow) before operation.
- Ø When not using the Player for extended periods of time, it is advisable to remove the battery in order to avoid possible damage caused by battery leakage.
- Ø Keep the Player dry.
- Ø To avoid damage that can be caused by static electricity, operate the Player in a dry

environment. If the Player malfunctions in this environment, it will need to be re-set in order to function properly.

- Ø Do not drop the Player onto hard surfaces as damage may be caused which may affect the performance of the Player.
- Ø Please change the battery if:
 - a. The “Low Battery” indicator appears;
 - b. The Player plays only briefly and then shuts off;
 - c. There is no response when pressing the keys/buttons even after reinstalling the same battery.
- Ø A new/charged battery (1 x AAA L203) must be inserted in order for the Player to function properly.

About the Player

Features

Ø Plays Multiple Formats

This model of player can play MP3 and WMA file formats.

Ø Simultaneous display of lyrics

Lyrics to tracks can be displayed simultaneously as a track is being played. (Supports .LRC format lyrics only.)

Ø Voice Recording

Record directly onto the Player via the built-in microphone.

Ø 6 Equalizer Pre-sets

Choose from six (6) Equalizer pre-sets - Normal, xBass, Rock, Jazz, Classical, and Pop – to optimise the sound quality no matter what your musical tastes.

Ø 5 Play Modes

Five (5) play modes - Normal, Repeat One, Repeat All, Random, Random All – to facilitate a variety of playing requirements.

Ø Supports playing copy-protected WMA files (WMA9 or DRM9)

Copy-protected WMA files (WMA9, also known as DRM9) can be played on this Player. DRM10 is not supported.

Ø Driver Free USB Disk

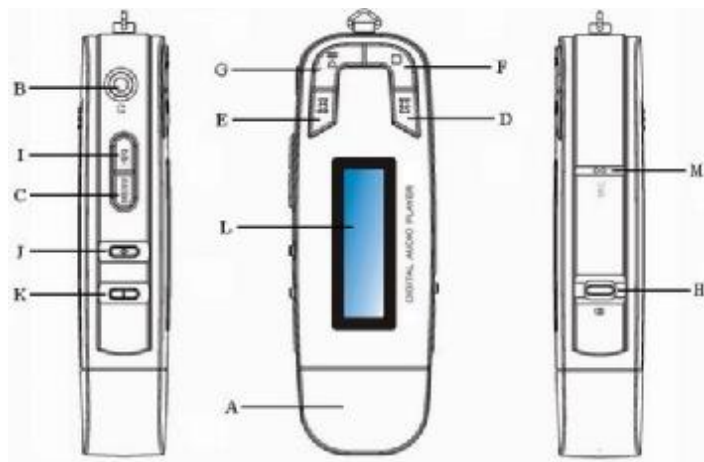
The Player will be recognised by your computer as an additional drive (E:/Removable Disk)

without the need for driver software (unless your PC uses Windows 98SE) - and you can manage the tracks/files that are on the Player directly via your PC (if running Windows 2000 or above).

This product has been designed to play digital music and be easy to use. We recommend reading the entire User Manual, however the information and diagrams below provide a useful overview of the main functions of the Player.

Exterior view & explanation of controls

The diagram below shows the front view of the Player and the table below it describes the function of the various control keys/buttons.

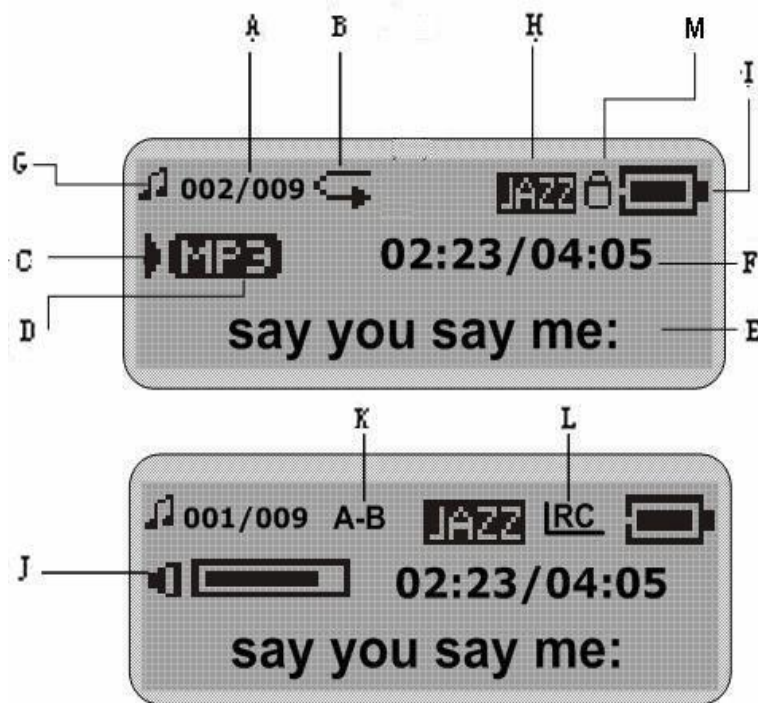


- A. USB Port Cover
- B. Earphone Socket
- C. A-B/Menu Button
- D. Skip to Next/Fast Forward
- E. Skip to Previous/Fast Rewind
- F. Power Off/Stop
- G. Power On/Play/Pause
- H. Hold Switch
- I. EQ Button
- J. Volume Up (+)
- K. Volume Down (-)
- L. LCD Display
- M. Microphone

<i>Item/Button</i>	<i>Function</i>
USB Port Cover	Remove the USB Port Cover and attach the large end of the USB lead here when connecting to a PC.
Earphone Socket	Plug the earphone/headset in here.
MENU	To enter the Main Menu and select modes, options, etc in various sub-menus.
Skip to Next/Fast Forward (,, ,,)	To scroll forward among tracks/files or through a menu.
Skip to Previous/Fast Rewind (<i>f f</i>)	To scroll back among tracks/files or through a menu.
Stop/Power OFF	Press briefly to stop playing a track/file. Press and hold to turn the Player OFF.
Play/Pause/Power ON	Press briefly to play or pause the track that is currently selected. Used occasionally in various sub-menus to select an option. Press and hold to turn the Player ON.
Hold Switch	Move the Hold switch toward the lock symbol to lock the keys of the Player.
EQ (Equalizer) Button	Press while playing tracks to change the equalizer setting being used for playback. EQ options include: Xbass, Rock, Jazz, Classical, Pop, Normal. Default is Normal.
Volume Up (+)	Press to increase the volume of the track/file being played.
Volume Down (-)	Press to decrease the volume of the track/file being played.
LCD Display	Liquid crystal display showing information relevant to currently selected mode (<i>i.e.</i> track/file information, play or repeat mode selected, elapsed play time, etc.)
Microphone (MIC)	Built-in microphone (for use in “Record” mode).

LCD Display Screen

The diagram below shows examples of the LCD screen in various modes and describes each of the various indicators shown on the screen. The table below the diagram explains what each of the symbols or indicators means.



- A. Track Number/Total Number of Tracks
- B. Repeat or Play mode indicator
- C. Play/Pause/Stop/Record indicator
- D. Music File Type (MP3 or WMA)
- E. Track Name/Information
- F. Elapsed Play Time/Total Length of Track
- G. Mode indicator (Music or Voice)
- H. Equalizer indicator
- I. Battery level indicator
- J. Volume level indicator
- K. A-B Repeat indicator
- L. Lyric file indicator
- M. Hold indicator

<i>Symbol or indicator</i>	<i>Description</i>
Track Length/Duration	Total duration of track in minutes and seconds.
Mode icon	Symbol shown indicates the currently specified Mode (Play Music, Radio, Voice, Record).
Bits & File Format	This indicator consists of two parts. The top figure (in numbers) shows the size of the file/track in bits. The bottom shows the format (MP3, WAV, etc) of the track/file.
Play Mode icon	Symbol shown indicates the currently specified Play Mode (Normal, Repeat One, Repeat All, etc).
Equalizer (EQ) mode icon	Symbol shown indicates the currently specified Equaliser (EQ) mode.
Battery Level indicator	Symbol shown indicates the level of charge left in the battery.

Song number & Total in current folder	This indicator consists of two parts. The top figure (in numbers) indicates the number of the track within the currently specified folder. The bottom number indicates the total number of tracks in the currently specified folder.
Artist & Track Name	Text showing the name of the artist and track.
Elapsed Play Time	Shows the elapsed play time for the current track.

Inserting or Replacing a Battery

The Aigo A208 Digital Audio Player requires 1 AAA LR03 battery in order to function.

To insert or replace a battery:

1. Remove the USB Port Cover.
2. Slide out the battery compartment cover from the back of the Player
3. Insert 1 fully-charged AAA LR03 battery into the battery compartment. The positive (+) and negative (-) symbols in the battery compartment indicate how the battery should be inserted.
4. Replace the battery compartment cover.
5. Replace the USB Port Cover.

The Player is now ready for use.

Basic Operations

After reading through this User Manual (and viewing the Tutorial Presentations, if desired), you are ready to start using the Player.

Turning the Player ON

When the Player is OFF, *press and hold* the PLAY button for several seconds.

The Aigo logo will appear in the LCD screen as the Player is powering up.

NOTE: The Player cannot be turned on if the Hold switch is in the ON position (toward the Lock icon). Ensure that the Hold switch is in the OFF position (away from the Lock icon) before attempting to turn on the Player.

Turning the Player OFF

When the Player is ON, *press and hold* the STOP button for several seconds.

Playing Tracks

1. Follow the instructions for the transfer of data to and from the MP3 Player to copy WMA/MP3 music files to the MP3 Player.
2. Connect the earphones to the earphone socket on the Player.
3. Turn the Player ON.
4. Enter the Music mode.
5. Select the track that you wish to play.
6. Press the Play button briefly.
The track will begin to play and the Artist and Track Name for the current track will begin to scroll across the LCD screen.

Use the Player's various other playback controls (Equalizer, volume, etc) as required in order to listen to your WMA/MP3 music optimally.

Playing Recorded Voice Files

With the Player ON and in Voice mode, *press* the PLAY button *briefly*.
The selected voice file will begin to play.

Pausing tracks

1. While a track is *playing* in Music mode, press the PLAY button *briefly*.
The Artist and Track Name will stop scrolling across the LCD screen and the Elapsed Play Time will stop running/increasing.
2. Press the PLAY button again briefly to remove the Pause and begin playing the track from the point that it was paused.

Selecting a track/file

With the Player ON and in Music mode, press the Skip to Next or Skip to Previous button to scroll to the next track (forward or back).

Keep pressing the Skip to Next or Skip to Previous button until you find the one you want to play.

Scrolling through menus & sub-menus

Use the Skip to Next (or Skip to Previous) button to scroll forward (or backward) through the options within any menu or sub-menu.

Fast-forwarding and Fast-Reversing

1. With the Player ON and playing, *press and hold* the Skip to Next or Skip to Previous button to fast scroll forward or backward through the tracks.
2. Release the Skip to Next (or Skip to Previous) button once you have reached the track that you want to play, and the track will begin to play.

Increasing/decreasing Volume

Press either the + or – button on the side of the Player, depending on whether you want to increase or decrease the volume.

The Volume level indicator in the LCD screen will go up (or down) and the volume you hear will be either louder or softer (depending on your selection).

Hold Switch - Locking the buttons/keys

In order to avoid accidental pushing of buttons/keys, they can be “locked” using the Hold switch located on the side of the Player.

1. To activate the Hold function, slide the Hold switch towards the Lock icon.
Once the buttons/keys are locked, a Lock symbol will appear in the LCD display. All the other buttons (except the “hold” button) will not work as normal when pressed.
2. To “unlock” the buttons and de-activate the Hold function, slide the Hold switch to the opposite position from the Lock icon.
The buttons/keys on the Player will then operate as normal.

<p>Note: The MP3 Player will turn off automatically if the Hold switch is in the ON position when attempting to turn the Player on.</p>
--

The Main Menu

The Main Menu can be accessed at any time by pressing the MENU button on the side of the Player.

The Main Menu options include the following:

- Ø Music
- Ø Record
- Ø Voice
- Ø Navigation
- Ø Settings
- Ø Delete

- Ø About
 - Ø Exit
3. Use the Skip to Next (or Skip to Previous) button to scroll through the Main Menu options until the desired one is reached.
 4. Press the MENU button again to confirm your selection and enter the relevant sub-menu.

The functions and options available within each of the Main Menu options are explained in greater detail in the remainder of this Manual.

Music Mode

Use the Music mode in order to play tracks/files that are on the Player.

Entering the Music Mode

1. Enter the Main Menu by pressing the MENU key on the side of the Player.
2. Once in the Main Menu, use the Skip to Next (or Skip to Previous) button to scroll through the options until the Music mode is selected.
3. Press the MENU button *briefly once* to confirm your selection and enter the Music mode.

Displaying Lyrics

This Player supports the use of .LRC lyric files so that lyrics can be displayed simultaneously while a track is being played.

The tracks that you choose to put on the Player will not have the lyrics with them, so you will need get the lyric files and put them onto the Player. The lyrics of many songs can be downloaded from various Internet sites - for example, from:

<http://www.mstclub.com/lyrics/search.aspx>

Note: The Aigo A208 MP3 player supports .LRC format only.
--

Transferring Lyrics Files onto the Player

To transfer a lyric file onto the Player:

1. Connect the Player to you PC with the USB cable (as outlined later in this manual).
2. Open Windows Explorer and find the exact name of the track or music file (*i.e.* GiGi-Sky.mp3) for which you want lyrics.
3. Download a lyric file in .LRC format from the Internet, making sure to save the lyric file with exactly the same name as that of the corresponding music file.

Example:

Music file name: GiGi-Sky.mp3
Lyric file name: GiGi-Sky.lrc

If you do not know how to change the file name as part of the download process, then rename the file after it has been downloaded.

NOTE: The lyric file will have a different suffix (.LRC) than the music file (.MP3) – just make sure that the *name of the file before the dot or full stop* is the same.

4. If it is not already on the Player, copy the music file onto the Player, as described elsewhere in this manual.
5. Copy the .LRC lyric file onto the Player in the same location as the music file.
6. Disconnect the Player from the PC.

Viewing/Showing Lyrics while a track is playing

If a track has a matching .LRC lyric file on the Player, then a lyric icon will appear in the LCD screen and the lyrics will automatically appear in the LCD screen as the track is playing.

Note: The Aigo A208 MP3 player supports .LRC format only.

To view lyrics:

1. Turn the Player ON.
2. Use the Skip Forward/Skip Previous buttons to find the track that you wish to play that has a matching .LRC lyric file.
3. Press PLAY.
4. The lyrics will appear in the LCD screen as the track is playing.

Note: If the lyrics do not synchronize properly with the music, it may be because the “triggers” used by the .LRC file that tell it when to change along with the music have not been inserted in the correct place in the track. Therefore, it is recommended that you download a different (and better) lyric file from Internet and try again.

Note: Make sure the MP3 music and LRC file is located in same directory on the Player and that the file name is *exactly* the same. If not, the MP3 player cannot recognize the lyric file.

Record Mode

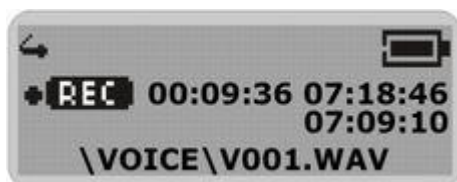
Use the Record mode to record voice directly onto the Player (as a file in .WAV format).

Recording

1. Enter the Main Menu by pressing the MENU key on the side of the Player.
2. Once in the Main Menu, use the Skip to Next (or Skip to Previous) button to scroll through the options until the Record mode is selected.
3. Press the MENU button *briefly once* to confirm your selection of the Record mode.

4. Press the PLAY button to begin recording.

The LCD screen will display the name of the file that is about to be recorded, and the timer will be at zero (00:00:00). An example of the LCD screen in the Record mode is shown below.



As recording occurs, the timer will begin to increase. Make sure that the MIC hole is not covered or obstructed in any way.

NOTE: The Player does not have automatic voice control, which means that even if there is no sound the Player will continue to record.

5. Press the STOP button to stop recording and save the voice file just recorded.
The voice recording will have been saved as a file named Vxxx.WAV in the Voice folder on the Player.
6. Press the PLAY button to listen to the voice file you just recorded.
7. To exit the Record mode, press MENU button on the side of the Player to access the Main Menu and select another mode.

Note: The LCD screen will display the words “MEMORY FULL” when all available memory has been used.

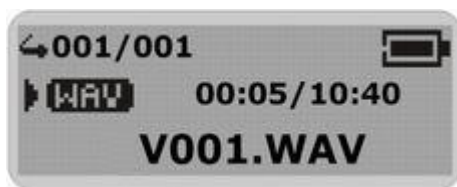
Voice Mode

Use the Voice mode to listen to the voice files that you had recorded directly onto the Player (in .WAV format).

Replaying Voice Files

The operations involved in replaying voice files are similar to those used for the playback of music tracks.

1. Enter the Main Menu by pressing the MENU button on the side of the Player.
2. Use the Skip to Next (or Skip to Previous) button to navigate to the Voice mode option.
3. Press the MENU button briefly once to confirm your selection and enter the Voice mode.
The LCD screen will appear as follows:



4. Use the Skip to Next (or Skip to Previous) button to navigate through the voice files until you reach the desired one.
5. Press the PLAY button to playback the recorded voice file.
The timer will begin to increase as the file plays.
6. Press the STOP key briefly to stop the playing of the voice.
7. To exit the Voice mode, press MENU button on the side of the Player to access the Main Menu and select another mode.

Navigation mode

The Navigation mode enables you to navigate around the various files and folders on the Player.

Entering the Navigation sub-menu

To enter the Navigation sub-menu:

1. Press the MENU button to access the Main Menu.
2. Use the Skip to Next (or Skip to Previous) button to scroll through the menu option until "Navigation" is selected.



3. Press the MENU button to confirm your selection and enter the Navigation mode.

The LCD screen will display the following information:

Line 1: Folder icon / MP3 music icon / WMA music icon / WAV file icon /
Upper directory icon

Line 2: File name / Folder name / Return to previous level

Changing or selecting a new Folder or File

1. Once in the Navigation mode, use Skip to Next (or Skip to Previous) button to scroll through

the options until the desired file or folder is highlighted/selected.

2. Press the MENU button to confirm your selection.

A sub-menu window will pop up.

If you selected a file, the following text will appear in the LCD screen:

“To play this file, select PLAY.”

If you selected a folder, the list of tracks contained in that folder will appear in the LCD screen.

3. Use the Skip to Next (or Skip to Previous) button to scroll through the list of tracks until the desired track is highlighted/selected.
4. To play the selected track, press the MENU (or PLAY) button.
5. Press the STOP button to navigate back to the previous screen/level.

NOTE:

The Player supports a maximum of 500 music files. Any music files over this maximum of 500 will be ignored.

The Player supports a maximum of 50 directories. Any directories over this maximum will be ignored, as will the content (music files) contained in those directories.

The Navigation capability on the Player supports a maximum of 255 files in any one directory. If a directory has over 255 files, only the first 255 files will be listed when navigating in the Navigation mode. However, additional files (over the 255) can still be accessed in the Music mode using the Skip to Next (or Skip to Previous) buttons.

The Player supports long file names by having scrolling display.

The Player supports a maximum of 19 folder levels.

Settings Menu

The Settings menu enables you to change the parameters of items that affect the Player globally (such as Contrast, Backlight, etc.).

The Settings menu contains the following options:

- Ø Equalizer
- Ø Repeat
- Ø Contrast
- Ø Backlight
- Ø Power Savings
- Ø Record
- Ø Default
- Ø Exit

To access the Settings menu:

1. Press the MENU button to access the Main Menu.
2. Use the Skip to Next (or Skip to Previous) button to scroll through the menu option until “Settings” is selected. *See example below.*



Each of these Settings menu options will be explained in detail below.

Equalizer

The Equalizer (EQ) function enables you to optimise the sound quality when playing different types of music.

The Player has the following five (5) pre-set Equalizer options:

- Ø Normal
- Ø XBass
- Ø Rock
- Ø Jazz
- Ø Classical
- Ø Pop

To access the EQ function:

1. Access the Settings menu as outlined above.
2. Use the Skip to Next (or Skip to Previous) button to scroll through the Settings menu and select the “Equalizer” option.



3. Press the MENU button to confirm your selection.
The Equalizer (EQ) sub-menu will appear in the LCD screen.
4. Use the Skip to Next (or Skip to Previous) button to scroll through the Equalizer (EQ) menu and select the desired option.
5. Press the MENU button to confirm your Equalizer selection and return to the Settings menu.
6. Select the “Exit” option in the Settings menu to leave the Settings menu and return to the Main Menu.

EQ Button

In Music mode, you can press the EQ Button briefly to directly switch the preset equalizer being used for playback. Each time the EQ button is pressed, the active equalizer will change in order of: XBass, Rock, Jazz, Classic, Pop and, back to the default, Normal.

Repeat

The Repeat function allows you choose from a number of different Repeat/Play options.

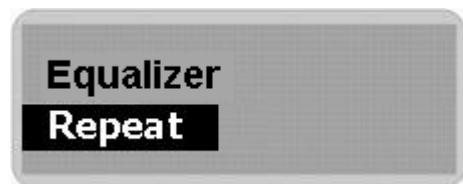
The available Repeat/Play modes are:

- ⊘ Normal
- ⊘ Repeat One
- ⊘ Repeat All
- ⊘ Random
- ⊘ Random All

<i>Option</i>	<i>Description</i>
Normal	Plays all of the tracks/files only once, in order, and then stops.
Repeat One	Plays the currently selected track/file repeatedly.
Repeat All	Plays all tracks/files in order repeatedly until another operation is performed or specified.
Random	Plays all the tracks/files in the currently selected folder at random and then stops.
Random All	Repeated plays all the tracks/files at random.

To access the Repeat function:

1. Access the Settings menu as outlined above.
2. Use the Skip to Next (or Skip to Previous) button to scroll through the Settings menu and select the “Repeat” option.



3. Press the MENU button to confirm your selection.
The Repeat sub-menu will appear in the LCD screen.
4. Use the Skip to Next (or Skip to Previous) button to scroll through the Repeat menu and select the desired option.
5. Press the MENU button to confirm your Repeat selection and return to the Settings menu.

6. Select the “Exit” option in the Settings menu to leave the Settings menu and return to the Main Menu.

A-B Repeat

A-B Repeat is a function that enables you to select a *segment* or *section* of a specific track/file - A is the start and B is the finish – and plays it repeatedly. This type of function can be very useful when learning a language, for example.

NOTE: To specify an A-B Repeat segment, the track from which you wish to specify a segment or section must be playing.

1. Enter the Music mode (as described earlier in this manual).
2. Use the Skip to Next (or Skip to Previous) button to find the desired track.
3. Press PLAY to start the track playing.
4. When the start point of the desired segment is reached in the track, press the MENU button to specify the start point, A.
An “A “ will appear in the LCD screen, indicating that the start of a segment has been selected.
5. Allow the track to continue playing until the desired end point of the segment is reached.
6. Press the MENU button again to specify the end point, B.
The specified A-B Repeat segment will then start playing repeatedly.
7. Press the MENU button to stop playing the A-B Repeat segment and return to the normal functioning in the Music mode.

Contrast

The Contrast option in the Settings menu enables you to adjust the contrast of the LCD screen.

To access the Contrast function:

1. Access the Settings menu as outlined above.
2. Use the Skip to Next (or Skip to Previous) button to scroll through the Settings menu and select the “Contrast” option.



3. Press the MENU button to confirm your selection.
A Contrast level indicator will appear in the LCD screen.



4. Use the Skip to Next (or Skip to Previous) button to increase/decrease the contrast to the desired level.
5. Press the MENU button to confirm your selected contrast level and return to the Settings menu.
6. Select the "Exit" option in the Settings menu to leave the Settings menu and return to the Main Menu.

Backlight

Use the Backlight option to specify a fixed time after which the backlight in the LCD screen will go out.

To access the Backlight function:

1. Access the Settings menu as outlined above.
2. Use the Skip to Next (or Skip to Previous) button to scroll through the Settings menu and select the "Backlight" option.



3. Press the MENU button to confirm your selection.
The Backlight sub-menu will appear in the LCD screen.



4. Use the Skip to Next (or Skip to Previous) button to scroll through the Backlight menu and select the desired option. Choose from 0 sec (off), 3 sec., 5 sec., 10 sec., 15 sec., ∞ sec (or always on).
5. Press the MENU button to confirm your Backlight selection and return to the Settings menu.
6. Select the "Exit" option in the Settings menu to leave the Settings menu and return to the Main Menu.

Power Savings

The Power Savings option in the Settings menu enables you to set the interval after which, provided there has been no operation of buttons, the Player will automatically power-off.

To access the Power Savings function:

1. Access the Settings menu as outlined above.
2. Use the Skip to Next (or Skip to Previous) button to scroll through the Settings menu and select the “Power Savings” option.



3. Press the MENU button to confirm your selection.
The Power Savings sub-menu will appear in the LCD screen.
4. Use the Skip to Next (or Skip to Previous) button to scroll through the Power Savings menu and select the desired option. Choose from: 0 mins (off), 1 mins, 2 mins, 5 mins, 10 mins, and 15 mins.
5. Press the MENU button to confirm your Power Savings selection and return to the Settings menu.
6. Select the “Exit” option in the Settings menu to leave the Settings menu and return to the Main Menu.

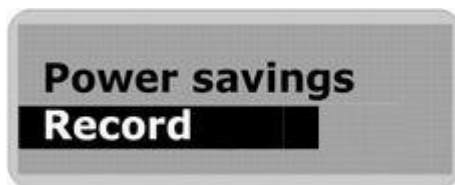
NOTE: Selecting "Off" means that the Player will *never* turn off automatically.

Record

The Record menu in the Settings menu enables you to adjust recording parameters (such as record format, sampling rate, etc.).

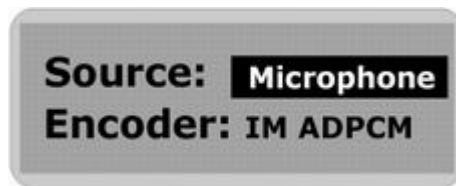
To access the Record settings options:

1. Access the Settings menu as outlined above.
2. Use the Skip to Next (or Skip to Previous) button to scroll through the Settings menu and select the “Record” option.



3. Press the MENU button to confirm your selection.
The Record settings sub-menu will appear in the LCD screen.

4. Use the Skip to Next (or Skip to Previous) button to select “Microphone” as the recording source.



5. Press the MENU button to confirm your selection and enter the sub-menu.
6. Use the Skip to Next (or Skip to Previous) button to scroll through the options and select the desired recording format.
7. Press the MENU button to confirm your selection.
8. Use the play button to scroll through the options and select the “Rate” option. Choose from the Sampling Rate options listed in the table below:

Sampling Frequency	Selected in LCD Screen	Maximum Recording Time per 128MB
8000 Hz	Rate: 8000Hz Exit	8 hours
11025 Hz	Rate: 11025Hz Exit	5.8 hours
16000 Hz	Rate: 16000Hz Exit	4 hours
22050 Hz	Rate: 22050Hz Exit	2.9 hours
32000 Hz	Rate: 32000Hz Exit	2 hours

NOTE: A higher recording sampling frequency brings better recording quality, but takes more memory space.

9. Press the STOP button, or select the “Exit” option in the Record settings menu to leave the Record settings menu and return to the Settings Menu.

Default

The Default option in the Settings menu enables you reset all settings on the Player to the factory defaults.

To access the “Default” function:

1. Access the Settings menu as outlined above.
2. Use the Skip to Next (or Skip to Previous) button to scroll through the Settings menu and select the “Default” option.



3. Press the MENU button to confirm your selection.
The Default settings will be loaded onto the Player.

Exit (Settings menu)

Use the “Exit” option in the Settings menu to leave the Settings menu and return to the Main Menu.

1. With the Settings menu in the LCD screen, use the Skip to Next (or Skip to Previous) button to scroll through the options until “Exit” is selected.
2. Press the MENU button to confirm your selection and return to the Main Menu.

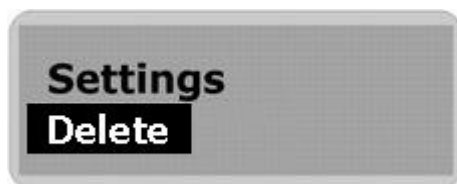
Delete mode

The Delete options available in the Delete mode enable you to delete one particular specified track/file from the Player.

WARNING: Erased files CANNOT be recovered.

Entering the Delete mode

1. Stop playback or recording before attempting to erase any files.
2. Press the MENU button to access the Main Menu.
3. Use the Skip to Next (or Skip to Previous) button to scroll through the menu option until “Delete” is selected.



4. Press the MENU (or PLAY) button to confirm your selection and enter the Delete mode.

You will then be prompted to specify the type of file that you wish to delete (or you can choose to leave the Delete mode):

- ∅ Music (to erase music files)



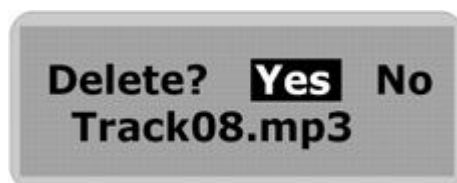
- ∅ Voice (to erase Voice files)



- ∅ Exit (to exit the Delete mode)

5. Use the Skip to Next (or Skip to Previous) button to scroll through the options until the desired option is highlighted (selected).
6. Press the MENU (or PLAY) button to confirm your selection.
7. Use the Skip to Next (or Skip to Previous) button to scroll to the track/file you wish to delete.
8. Press the MENU (or PLAY) button to confirm your selection.

You will then be asked to confirm that you want to delete/erase the currently selected music track or voice file.



9. If you are sure that you want to erase the selected file, use the Skip to Next (or Skip to Previous) button until YES is highlighted.
10. Press the MENU (or PLAY) button to confirm your selection.
11. The file will then be erased. Another file will be listed on the screen and you will be asked again if you wish to erase this file. Choose NO if you do NOT wish to delete the file.
You will then be returned to the Delete mode screen.
12. Select the Exit option to leave the Delete mode screen and return to the Main Menu.

About

The “About” function enables you to view information regarding the amount of available (“free”) memory, the total amount of built-in memory and the firmware version that is on the Player.

To access the “About” information:

1. Press the MENU button to access the Main Menu.
2. Use the Skip to Next (or Skip to Previous) button to scroll through the menu option until “About” is selected.



3. Press the MENU button to confirm your selection and enter the “About” screen.
The firmware version number and internal media information will appear in the LCD screen.
4. Use the Skip to Next (or Skip to Previous) button to view the Free Memory space information.
5. Press the MENU button to exit the “About” screen and return to the Main Menu.

Firmware

Firmware is a technology for updating elements of the computer code that runs the Player. Firmware is installed to enable the Aigo UK Support Team to correct elements of the computer code quickly and easily (if required) should you experience problems with the Player that can be corrected via Firmware.

NOTE: You should only ever use the Firmware functionality if instructed to do so by the Aigo UK Support Team. Instructions will be provided to you should this ever be necessary.

Exit

Use the “Exit” option in the Main Menu to leave the Main Menu and return to the mode you were previously using.

NOTE: Pressing the STOP button while in any sub-menu will return you to the previous menu.

Connecting the Player to a PC

Make sure your PC/computer supports USB devices. (Refer to your PC manual for the information about hardware).

The Player can be used as a spare mass storage device that is connected to your PC via a USB cable. This functionality is supported under the following Operating Systems:

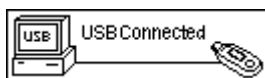
- Ø Windows 98SE (with driver, provided on CD-ROM in Product Pack)
- Ø Windows ME/2000/XP (no driver required – see NOTE below)

NOTE: *For Windows 2000 users ONLY:* Windows Service Pack 3 must be installed before installing the MP3 Player driver files.

For Windows ME/2000/XP users: The driver software will be required *only* if a Firmware Upgrade is required for the Player.

You should only ever use the Firmware functionality if instructed to do so by the Aigo UK Support Team.

1. Connect your PC to your player using the USB cable provided in the Product Pack. The one end of the USB cable goes into the USB port of the Player, and the other end goes into a spare USB port on your PC.
2. After connecting the USB cable to both the Player and your PC, the Player will turn ON automatically and will enter the USB mode. The LCD screen will appear as follows:



NOTE: If your PC is running Windows 98, then you will need to install the driver software (provided on the CD-ROM in the Product Pack) BEFORE you connect the Player to your PC for the first time. See “Installation of the Driver Software” on page 26.

Disconnecting the Player from a PC

To safely disconnect the MP3 Player from the PC each time you want to disconnect it, you must *double-click* on the “Safely Remove Hardware” icon located in the System Tray at the right-hand end of the Windows Taskbar (which is the blue bar located at the bottom of the screen).

Windows ME, 2000 & XP users:

1. Click on the “Safely Remove Hardware” icon in the taskbar (near to the clock on the far right).
2. Click on “Safely remove USB Mass Storage Device”.
3. Wait until a “Safe to Remove Hardware” message is displayed.
4. Remove the Player’s USB lead from the USB port on the PC.

NOTE: Remove the USB cable only after the PC has instructed you that it is safe to do so.

Windows 98/98SE users:

1. Wait until the Player’s LCD screen displays "USB connected" for a moment.
2. Remove the Player’s USB lead from the USB port on the PC.

Installation of Driver Software (for PCs running Windows 98SE only)

NOTE: Installation of the Driver Software is ONLY required if the PC to which you are connecting the Player is running the operating system Windows 98SE.

The CD-ROM enclosed in the Product Pack includes the driver software that is required in order to enable a PC running Windows 98SE to load or delete tracks/files onto or from the Player.

1. Place the installation CD into the CD-ROM drive of your PC/computer.
2. If the installation does not start automatically, click on the Windows Start button (in the bottom left of the window/screen, and select the “Run” option from the resulting menu.
3. In the Run window, type D:\SETUPEXE (where D:\ is the your CD drive) to run the installation program and install the driver software onto your PC.
4. Re-start your PC after installation is completed.

Digital Rights Management (DRM)

This product supports a new standard of secured WMA files known as DRM9 (sometimes called WMA9).

It is quite common that WMA tracks available for purchase on a one-off basis from on-line music stores are secured using DRM9 technology. This player is designed to support the DRM9 standard.

For instructions and information on how to play WMA9/DRM9 tracks on this Player, see “Transferring DRM9/WMA9 Tracks” on page 30.

NOTE: There is another technology, known as DRM10, through which a customer can enter into a monthly, fixed price contract for the use of music.
This product does NOT support DRM10 and, therefore, it is not possible to play tracks purchased through a Fixed Price Monthly contract on this Player.

Transferring Tracks to the Player from a CD

NOTE: If your PC/computer is running Windows 98SE, then you will need to install the driver software (provided on the CD-ROM in the Product Pack).

This section outlines the steps involved in transferring tracks/files from a CD to a PC and then to the Aigo A208 Player.

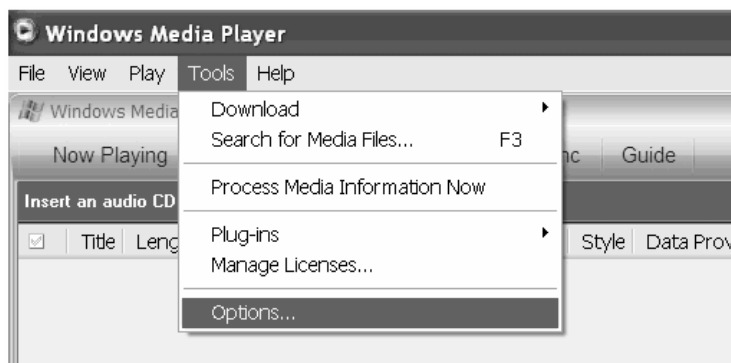
1. Ensure that you have Windows Media Player (preferably version 10) installed on the PC you will be using. Windows Media Player 10 can be downloaded from:

<http://www.microsoft.com/windows/windowsmedia/mp10/default.aspx>

2. Connect the Player to a PC as explained in “Connecting the Player to a PC” on page 25.
3. Ensure that all other programmes are closed.

NOTE: To ensure maximum compatibility, you must specify that you want Windows Media Player to transfer (“rip”) the tracks in MP3 format.

4. Open Windows Media Player, click on the “Tools” menu and select “Options” (see example below).



5. When the Options dialog box opens, click on the “Rip Music” tab, as indicated in the picture below.



6. Click on the “Format” drop-down list and select “MP3”, make sure that the option, “Copy protect music” is NOT selected, then click OK.

NOTE: This Player supports copy-protected WMA files (WMA9 or DRM9 format only). For further information about DRM technology, see “Digital Rights Management (DRM)” on page 26.

7. Open the CD drive; carefully insert the CD containing the tracks that you wish to transfer to your MP3 Player, and close the CD drive.

A pop-up box will appear asking what you would like to do with the tracks/files (see example below).

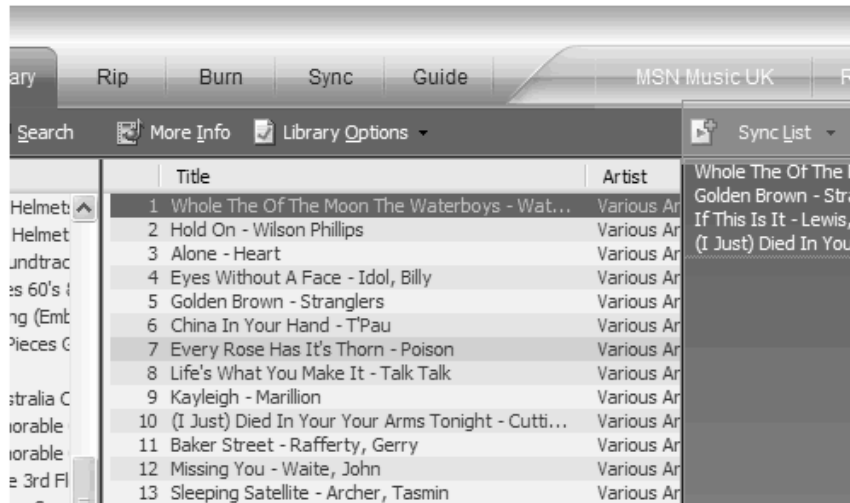


8. Select “Rip Music from CD using Windows Media Player” and click OK.

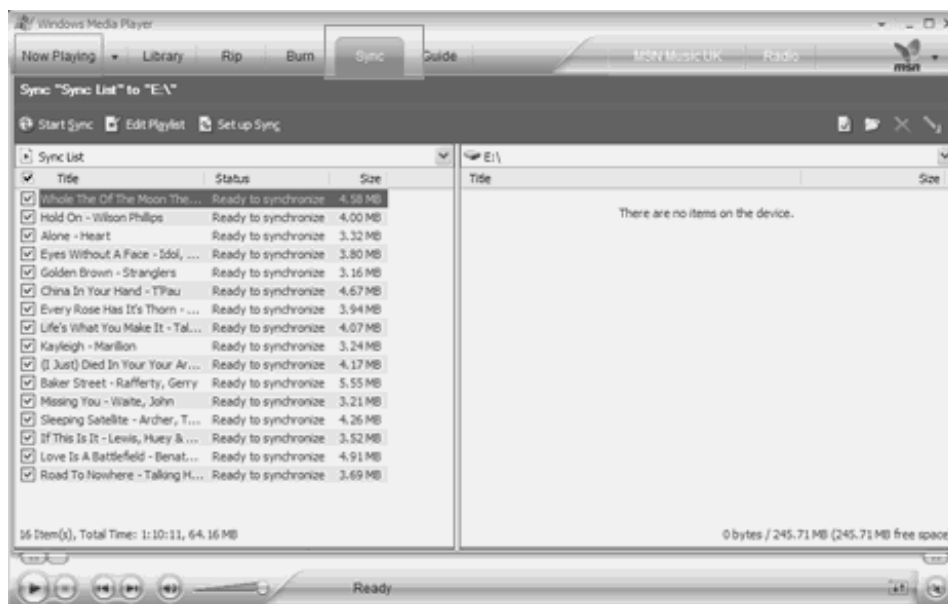
Windows Media Player will open and will automatically begin to transfer (rip) the tracks into your Windows Media Player Library, which can be accessed by clicking on the “Library” tab at the top of the window (see example below).



9. Once the tracks/files have been transferred (ripped), click on the “Library” tab at the top of the player window and you will see the tracks/files that you have just imported.
10. Select a track and, while holding the left mouse key down, drag it over to the “Sync List” on the right-hand side. Drop it into the Sync List by releasing the left mouse key. See example below.



11. Once you have dragged all of the tracks that you want into the Sync List, click on the “Sync” tab at the top of the player window.

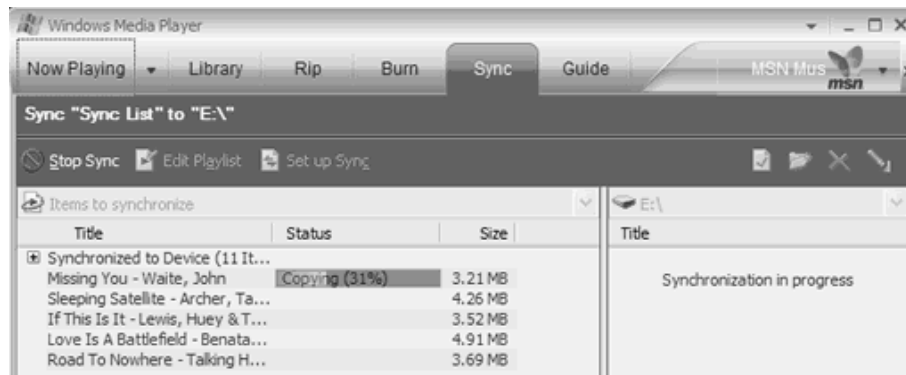


On the left, you will see tracks you have just imported. On the right, you will see your MP3 Player directory. If there are no tracks/files on the Player, the words “There are no items on this device.” will appear.

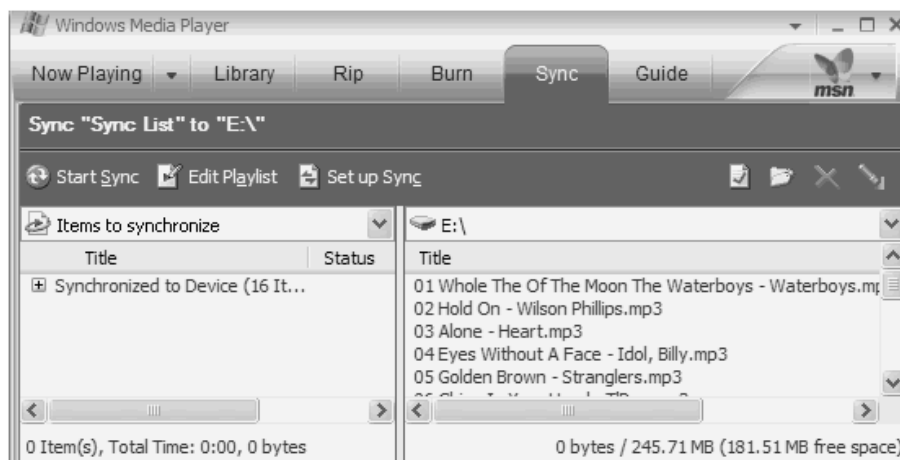
12. Click on the green “Start Sync” button (see example below).



You will see progress of the transfer on the left-hand side. The right-hand side will say "Synchronization in progress." (See example below.)



Once the synchronisation has completed, you will see all of the tracks on the right-hand side, indicating that they have been successfully transferred to the MP3 Player (see example below).



13. Close Windows Media Player by clicking on the "X" in the top right of the player window.

Transferring DRM9/WMA9 tracks to the Player

In order to transfer DRM9/WMA9 (copy-protected WMA files) onto the Player, it is necessary that:

- The Player is connected to your PC
- Your PC is be connected to the Internet
- Windows Media Player 10 is installed on your PC.

The reason for this is that WMA files that are secured with DRM9 technology are licensed, and the license(s) must be able to be verified on-line by the on-line music store. This is done via a synchronisation process (as in the previous section) in Windows Media Player. During the synchronisation process, Windows Media Player checks if the license is valid. If the PC is not connected to the Internet, then Windows Media Player cannot check that license to the track is valid and, therefore, the synchronization cannot be completed.

Once transferred onto the Player, WMA9 tracks can be played as normal on the Player.

Copying Tracks & Files to (and from) the Player

This section outlines the steps involved in transferring tracks/files (but not DRM9 or WMA9 files) from your PC to the Aigo A208 Player and from the Player to a PC.

1. Make sure that the Player is turned off.
2. Remove the USB port cover & disconnect the earphones.
3. Using the USB lead, plug the Player into the USB port of your PC. The built-in LCD displays "USB Connected", indicating that the Player is in USB mode. The Player is then automatically recognized (in 'My Computer') as a removable media device.
4. Use Windows' copy and paste functionality to transfer files to (or from) the Player via Windows Explorer.
5. When you have finished copying tracks to (or from) the Player, unplug the Player from your PC (as outlined in "Disconnecting the Player from a PC" on page 25).

The tracks/files that you copied onto the Player can now be listened to (or data transferred to the PC can transferred to another computer).

Deleting files from the Player (via a PC)

To delete files from the Player via a PC:

1. Make sure that the Player is turned off.
2. Remove the USB port cover & disconnect the earphones.
3. Using the USB lead, plug the Player into the USB port of your PC. The built-in LCD displays "USB Connected", indicating that the Player is in USB mode. The Player is then automatically recognized (in 'My Computer') as a removable media device.
4. Use Windows' delete functionality to delete files from the Player via Windows Explorer. (Open Windows Explorer by right mouse clicking on the "Start" button at the bottom left of the taskbar and selecting "Explore".)
5. When you have finished deleting tracks from the Player, unplug the Player from your PC (as outlined in "Disconnecting the Player from a PC" on page 25).

Caution: DO NOT disconnect the Player while a track/file is being downloaded from a PC, as it may damage your Player.

Adding Folders to the Player

Folders are a handy way of storing and organising the tracks on the Player, making it easier for

you to find specific tracks/files.

Folders can easily be added to the Player via your PC.

1. Connect the Player to your PC using the USB cable provided in the Product Pack.
Once the Player is recognised by your PC, a “Safely Remove Hardware” icon will appear among the icons at the right-hand end of the Windows Taskbar (which is located at the bottom of the screen).
2. Open Windows Explorer by right-mouse clicking on the Start icon in far left-hand side of the Windows Taskbar (which is located at the bottom of the screen).
The Player will appear as a new drive “E:/ Removable Disk” in the left-hand navigator in Windows Explorer.
3. Open the Player by clicking once on the “+” next to the drive name, “E:/ Removable Disk”.
The folder structure that already exists on the Player will appear in the right-hand pane in Windows Explorer.
4. With the Player’s drive name “E:/ Removable Disk” selected (highlighted) in the left-hand navigator, click File > New > Folder.
A new folder will appear in the right-hand pane, with the name “New Folder” highlighted and inside a box, which indicates that the name can be edited.
5. Before clicking on anything else, while the folder name is still highlighted and inside of an editing box, type in the name that you wish to give the new folder.

NOTE: The Player recognises folders in a hierarchy (<i>i.e.</i> folders within folders).
--

Changing the names of Folders on the Player

The names of folders on the Player are changed in the same way as you change the names of folders on your PC.

1. Connect the Player to your PC using the USB cable provided in the Product Pack.
Once the Player is recognised by your PC, a “Safely Remove Hardware” icon will appear in the System Tray at the right-hand end of the Windows Taskbar (which is located at the bottom of the screen).
2. Open Windows Explorer by right-mouse clicking on the Start icon in far left-hand side of the Windows Taskbar (which is located at the bottom of the screen).
The Player will appear as a new drive “E:/ Removable Disk” in the left-hand navigator in Windows Explorer.
3. Open the Player by clicking once on the “+” next to the drive name, “E:/ Removable Disk”.
The folder structure that already exists on the Player will appear in the right-hand pane in Windows Explorer.
4. In the right-hand pane in Windows Explorer, select the folder that you wish to rename.

5. Right-mouse click on the folder, and select the “Rename” option.
The menu will disappear. The folder will be highlighted in the right-hand pane, and the folder name will be highlighted inside of an editing box.
6. Type in the new name for the folder, and press the Return (**⏎**) key on the keyboard.
The new name will appear next to the folder and will be changed on the Player.
7. When you have finished and want to disconnect the Player from your PC, single-click on the “Safely Remove Hardware” icon in the System Tray at the right-hand end of the Windows Taskbar (located at the bottom of the screen), and then single-click on “Safely Remove USB Mass Storage Device – Drive (E:).
After a few seconds, a text bubble will appear tell you that it is safe to remove the connection between the Player and the PC.

Technical Specification

Dimensions	30mm x 95mm x 18mm (H x W x D)	
Weight	40 grams (including battery, excluding earphones & strap)	
Internal Flash memory size	128MB, 256 MB, 512 MB or 1 GB (depending on model purchased), with 10 MB reserved for Firmware and system management)	
Processor	75 MIPS DSP	
LCD Screen Size	128 x 32 pixel (Dot-matrix LCD with backlight & ID3 Tag display)	
Battery (1 x AAA)	Max Play time = approx. 8 hours	
Acceptable Music formats	MP3, WMA	
Record	<i>Sample rate:</i>	8 KHz to 32 KHz
	<i>Recording formats:</i>	WAV (with ADPCM encoding)
	<i>Max. Recording Time:</i>	Each 128 MB memory provides about 8 hours recording (at default setting, 8 KHz)
MP3, WMA	<i>Max. Headphone output:</i>	7 mW (each output)
	<i>Total Harmonic Distortion Output:</i>	0.01% ~ 0.5%
	<i>Frequency Response:</i>	20 Hz ~ 20 kHz
	<i>Sound-to-Noise Ratio:</i>	> 80 dB (decibels)

Ports	USB Port & Earphone Out
Operating Systems	Windows 98SE (with driver) Windows ME, 2000, XP (no driver required)

Understanding the Technical Specification

Flash Memory Size:

Indicates the amount of Flash memory or storage space that is available to the Player on which to store tracks/files.

LCD Screen Size:

Indicates the maximum size (in number of pixels) of the LCD display screen.

Sample Rate:

Also known as “Sampling Rate”, this measures the “resolution” of the sound - the higher the Sample Rate, the higher the quality of sound.

Recording Formats:

Indicates the formats that the Player can create when recording.

Max. Recording Time:

Indicates the maximum amount of direct recording time.

Frequency Response:

This indicates the tonal range of the sounds that can be played on the Player.

SNR (Sound-to-Noise Ratio):

SNR is a ratio of the power or volume (amplitude) of a sound to the amount of unwanted interference (noise) that has mixed in with it. Measured in decibels, the sound-to-noise ratio measures the clarity of the signal in a circuit or a wired or wireless transmission channel. The greater the ratio (evidenced by a larger number), the less noise and the more easily it can be filtered out.

Acceptable File Formats:

Refers to the file formats or types of music track that can be loaded and played by the Player.

Operating Systems:

Indicates the operating systems on a PC with which the Player can connect for downloading of files, etc.

Trouble-shooting

<i>Problem</i>	<i>Solution</i>
No sound is heard from earphones	<ol style="list-style-type: none"> 1. Ensure that the earphones are plugged into the Player firmly. 2. Check whether the Volume is set to “0”. 3. Check whether the earphone plug is dirty. 4. Make sure that the music files are not corrupted. (Corrupted MP3 files may have a background static noise and the sound may cut off.)
Why can't I play DRM protected files?	DRM-protected files will only play if you transfer them to the Player through Windows Media Player or through the music management software provided by the online music store where you purchased the files.
How to play WMA and DRM protected Files	See “Digital Rights Management” on page 26 and “Transferring DRM9/WMA9 tracks to the Player” on page 30.
Download of music files to the Player fails	<ol style="list-style-type: none"> 1. Check whether the USB cable is damaged. 2. Check that the USB cable is connected properly. 3. Check whether the driver software is installed correctly. 4. Check whether the Player’s memory is full.

Safety

Listening to loud sounds for prolonged periods may permanently damage your hearing.

Before putting on the headphones, place them around your neck and turn the volume down. Then put the headphones on and slowly increase the volume until you find a comfortable listening level.

Warranty

Thank you for your purchasing an Aigo product. We hope you enjoy the experience.

The content of this User Manual, product design and specification is subject to change without notice.

Should the Player not operate precisely in the manner outlined in this Manual, please visit the Aigo UK website (www.aigo.co.uk) for the latest product information.

Should you require any assistance with your Aigo product, please be sure to first contact the Aigo UK Support team:

Telephone: 0871 288 0536 (Monday-Friday, 9am-5pm)

Email: [**support@aigo.co.uk**](mailto:support@aigo.co.uk). (Response within 24 hours)

The Support Team

aigo UK

SBC House

Restmor Way

Wallington

SM6 7AH

[**www.aigo.co.uk**](http://www.aigo.co.uk)

Free Manuals Download Website

<http://myh66.com>

<http://usermanuals.us>

<http://www.somanuals.com>

<http://www.4manuals.cc>

<http://www.manual-lib.com>

<http://www.404manual.com>

<http://www.luxmanual.com>

<http://aubethermostatmanual.com>

Golf course search by state

<http://golfingnear.com>

Email search by domain

<http://emailbydomain.com>

Auto manuals search

<http://auto.somanuals.com>

TV manuals search

<http://tv.somanuals.com>