



Model # APSUSB201W

Quick Installation Guide

Ver. 1A

Section 1

Setup Preparation

Caution: Before beginning the installation, make sure that the printer driver is installed locally on each computer that will print through the print server. Otherwise, the print server will not be configured successfully. Please refer to your printer's manual for instructions on how to install the printer driver.

Before setting up the print server, please take note of your TCP/IP setting.

Step 1 Click on **Start**, **Run**, and type **command** (for Windows 95/98/ME) or **cmd** (for Windows 2000/XP) and click **OK**.

Step 2 At the command prompt, type **ipconfig** and press **Enter**.

Step 3 Write down the information for the **IP Address**, **Subnet Mask**, and **Default Gateway**. You will need these information later. (This is the IP Address of your computer).



```
C:\WINDOWS\System32\command.com
Microsoft(R) Windows DOS
(C)Copyright Microsoft Corp 1990-2001.
C:\DOCUME~1\OWNER>ipconfig

Windows IP Configuration

Ethernet adapter Local Area Connection:

    Connection-specific DNS Suffix  . :
    IP Address. . . . .               : 192.168.0.227
    Subnet Mask . . . . .             : 255.255.255.0
    Default Gateway . . . . .         : 192.168.0.1

C:\DOCUME~1\OWNER>_
```

Section 2

Connecting the Print Server

Warning: Only a USB printer may be connected to the USB port of the print server. Connecting any other USB device to the print server may damage the print server.

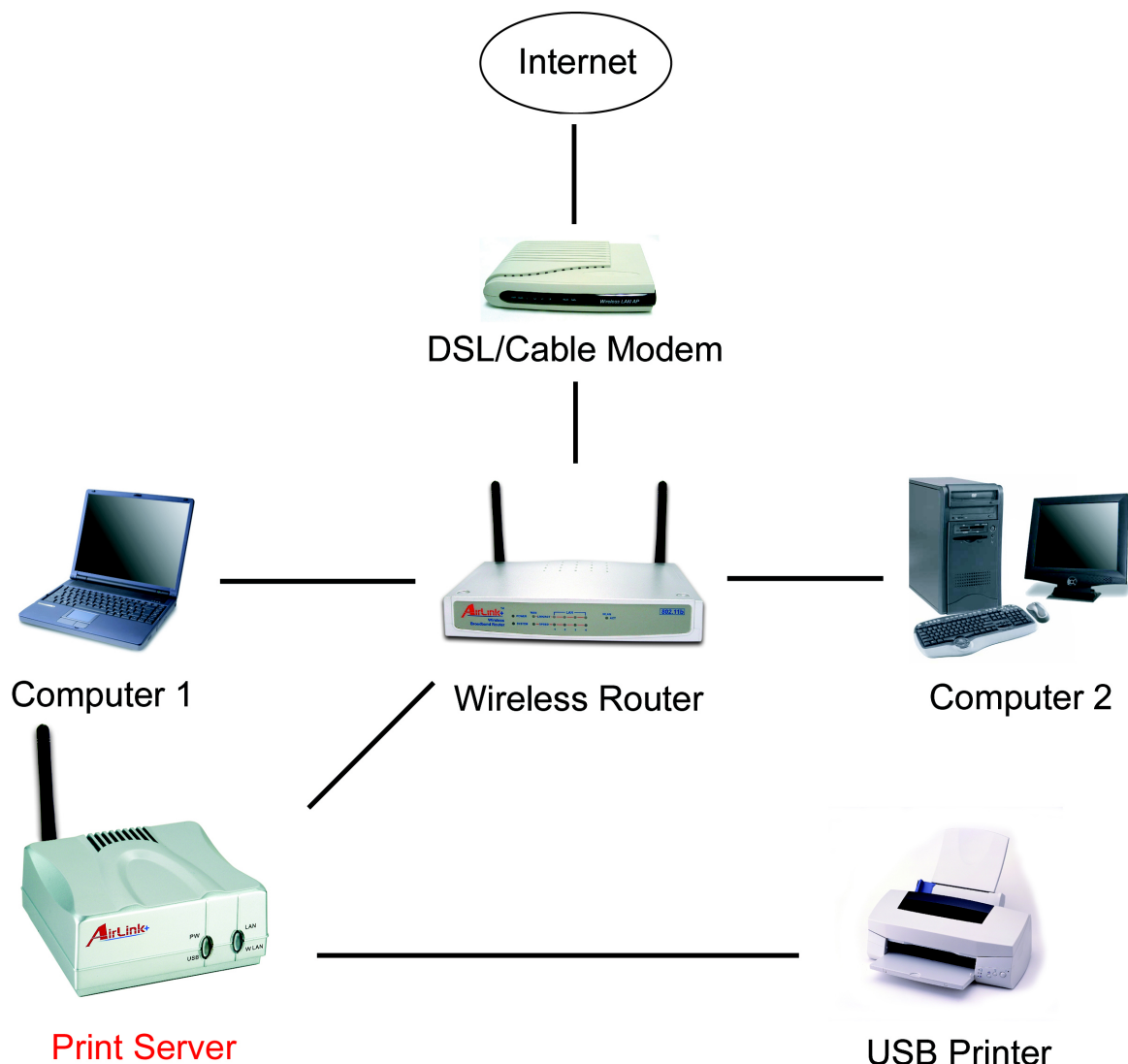
Note: It is strongly recommended that you configure the print server through a wired connection first before configuring it for wireless printing.

Step 1 Connect one end of the Ethernet cable to the RJ-45 port of the print server and attach the other end of the cable to a router.

Step 2 Make sure the printer is powered **OFF**, then connect one end of the USB cable to the USB port of the print server and attach the other end of the cable to the USB port of the printer.

Step 3 Turn **ON** the printer.

Step 4 Plug one end of the power cord into the print server and the other end into an electrical outlet.



Section 3

Installing Software

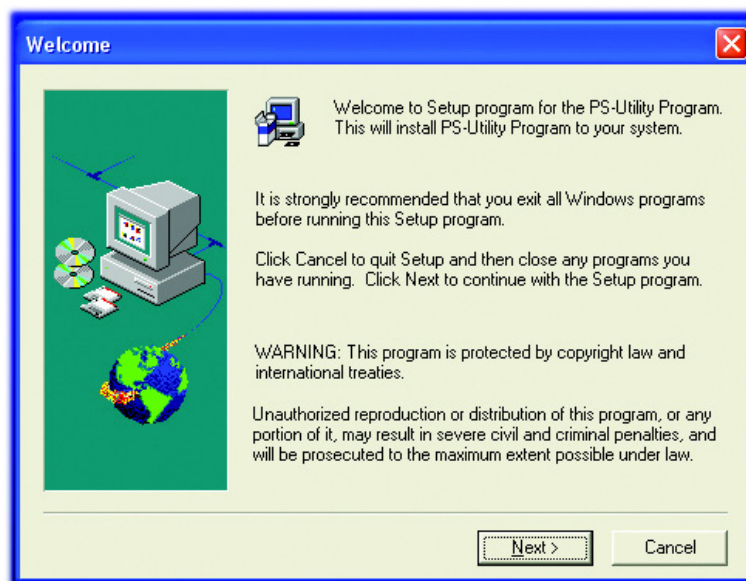
Step 1 Insert the provided CD and wait for the setup menu to appear.

Step 2 Click on **Install Utility**.

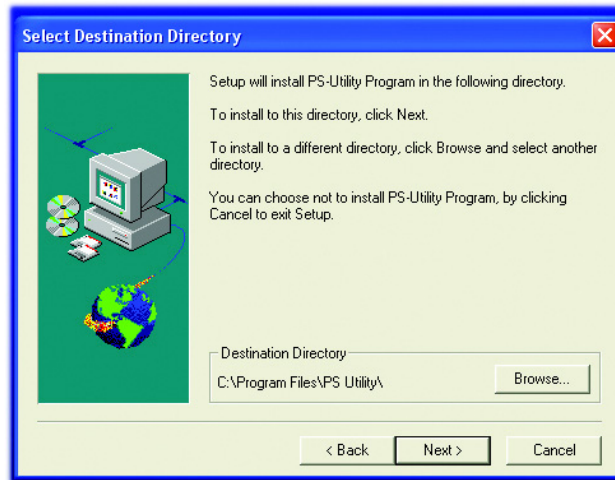


Note: If the setup menu does not appear automatically after you have inserted the CD, go to **Start, Run,** type **D:\PS Utility\setup.exe** (where **D** is the letter of your CD drive) and click **OK**.

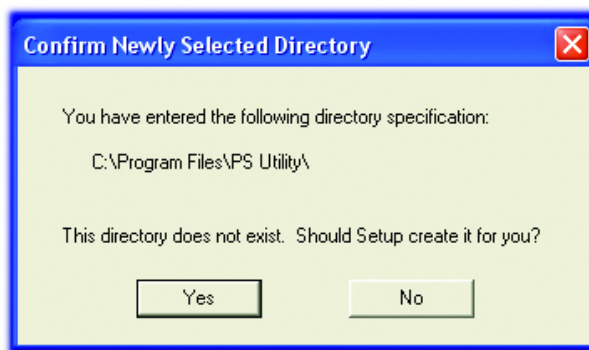
Step 3 Click **Next**.



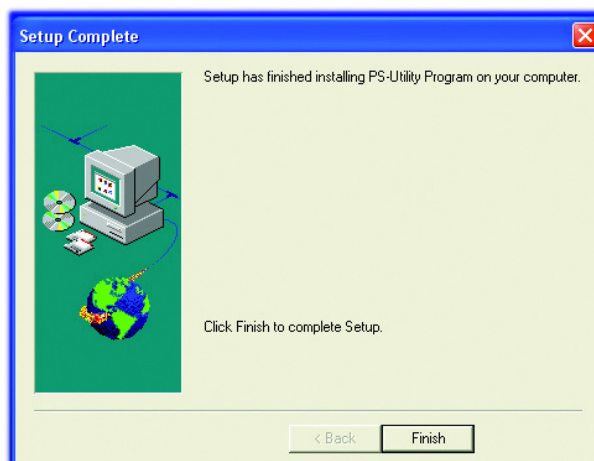
Step 4 Click **Next**.



Step 5 Click **Yes**.



Step 6 Click **Finish**.



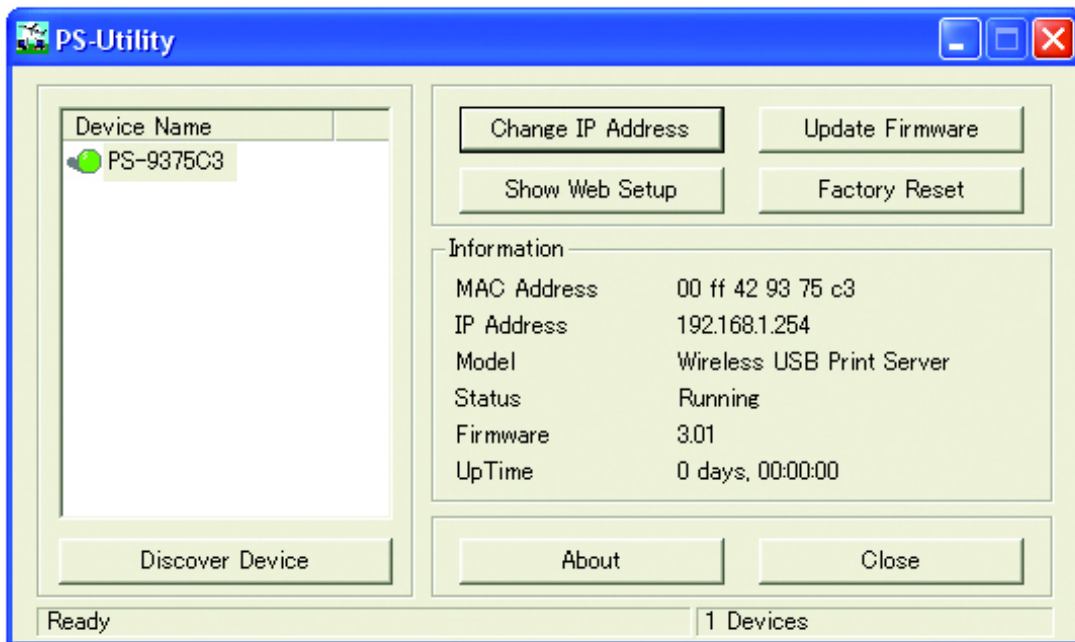
Section 4

Running PS Utility

Note: If your TCP/IP setting from **Section 1** has an IP Address of **192.168.1.x** (where **x** is a number between **2 - 253**) **AND** your Default Gateway is **192.168.1.1**, you may skip this section and proceed to **Section 5, Verifying Network Connection**. If either criteria does not match, please follow the instructions below to configure the network setting of the print server.

Step 1 Run the PS Utility by going to **Start, (All) Programs, PS Utility, PS Utility v2.00**.

Step 2 Make sure the print server is detected under the **Device Name**.



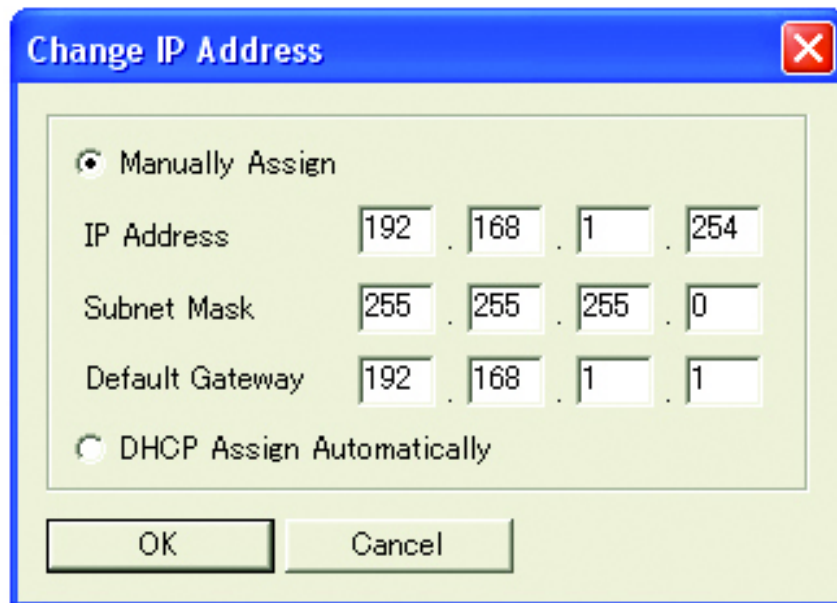
Note: If the print server is not detected, click on **Discover Device**. If nothing still appears, use a paper clip and hold in the **Reset** button at the back of the print server for ten seconds while it is on then click on **Discover Device** again.

Step 3 Highlight the print server and click on **Change IP Address**. Refer back to the TCP/IP setting noted in Section 1 and make sure the **Subnet Mask** and **Default Gateway** match the ones you wrote down. If not, enter them manually.

Step 4 Refer back to the TCP/IP setting from Section 1. Note the first three sets of numbers from the **IP Address** you wrote down and enter them into the respective fields.

For example: If your computer's **IP Address** is **192.168.0.100**, enter the same three numbers: **192.168.0** in the corresponding fields.

Step 5 You can leave the last number **254** as is unless another network device (i.e. the **Default Gateway** from Section 1) is already using that number. If another network device is already using **254**, then change it to another number that is currently not in use (preferably **200 - 253**).



Step 6 Validity Check:

Make sure the **last number** on:

1. Computer's IP Address (IP Address from Section 1)
2. Print Server's IP Address (IP Address on the **Change IP Address** window)
3. Default Gateway (Default Gateway from Section 1)

are **NOT** the same.

Step 7 Click **OK**.

Step 8 Close the PS Utility program.

Section 5

Verifying Network Connection

Step 1 Click on **Start, Run**.

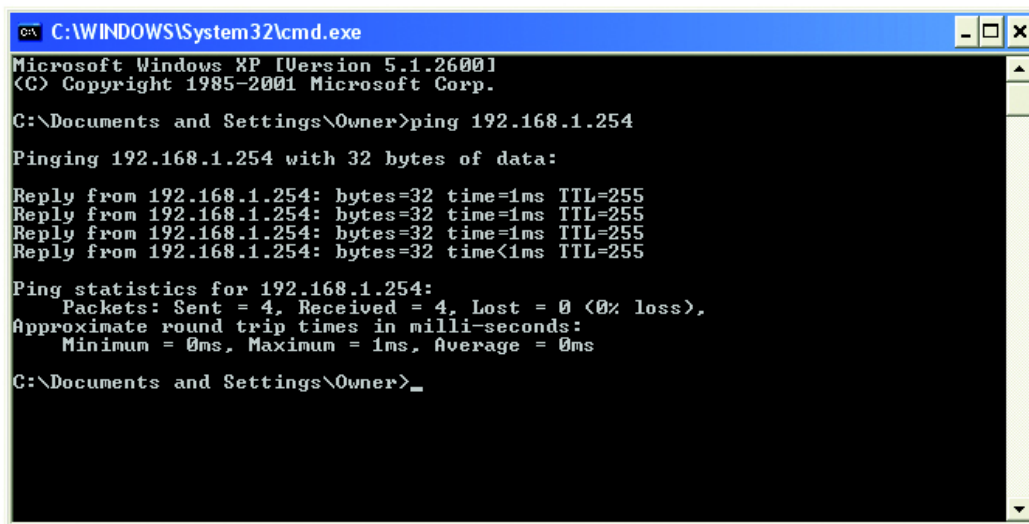
Step 2 For Windows 95/98/ME type **command** and click **OK**. For Windows 2000/XP, type **cmd** and click **OK**.

Step 3 At the command prompt, type **ping** and the **IP Address** of the print server and press **Enter**.

For example, if you have changed the IP Address of the print server to **192.168.0.254**, type **ping 192.168.0.254**

If you kept the factory default IP address, type **ping 192.168.1.254**

You should get four **Reply from** messages back from the print server similar to the following picture.



```
C:\WINDOWS\System32\cmd.exe
Microsoft Windows XP [Version 5.1.2600]
(C) Copyright 1985-2001 Microsoft Corp.

C:\Documents and Settings\Owner>ping 192.168.1.254

Pinging 192.168.1.254 with 32 bytes of data:

Reply from 192.168.1.254: bytes=32 time=1ms TTL=255
Reply from 192.168.1.254: bytes=32 time=1ms TTL=255
Reply from 192.168.1.254: bytes=32 time=1ms TTL=255
Reply from 192.168.1.254: bytes=32 time<1ms TTL=255

Ping statistics for 192.168.1.254:
    Packets: Sent = 4, Received = 4, Lost = 0 (0% loss),
    Approximate round trip times in milli-seconds:
        Minimum = 0ms, Maximum = 1ms, Average = 0ms

C:\Documents and Settings\Owner>_
```

Step 4 Once you have received the four **Reply from** messages, you can proceed to the next section.

If you get **Request timed out** or **Destination host unreachable** message, please double-check your network cable connection and try again.

If you still do not get any **Reply from** messages, use a paper clip and hold in the **Reset** button at the back of the print server for ten seconds while it is turned on.

Note: Resetting the print server with the **Reset** button will reset the print server's IP address to the factory default. If you need to change the IP address of the print server again, use the **PS Utility**. After you have changed the print server's IP address, try to ping the print server again.

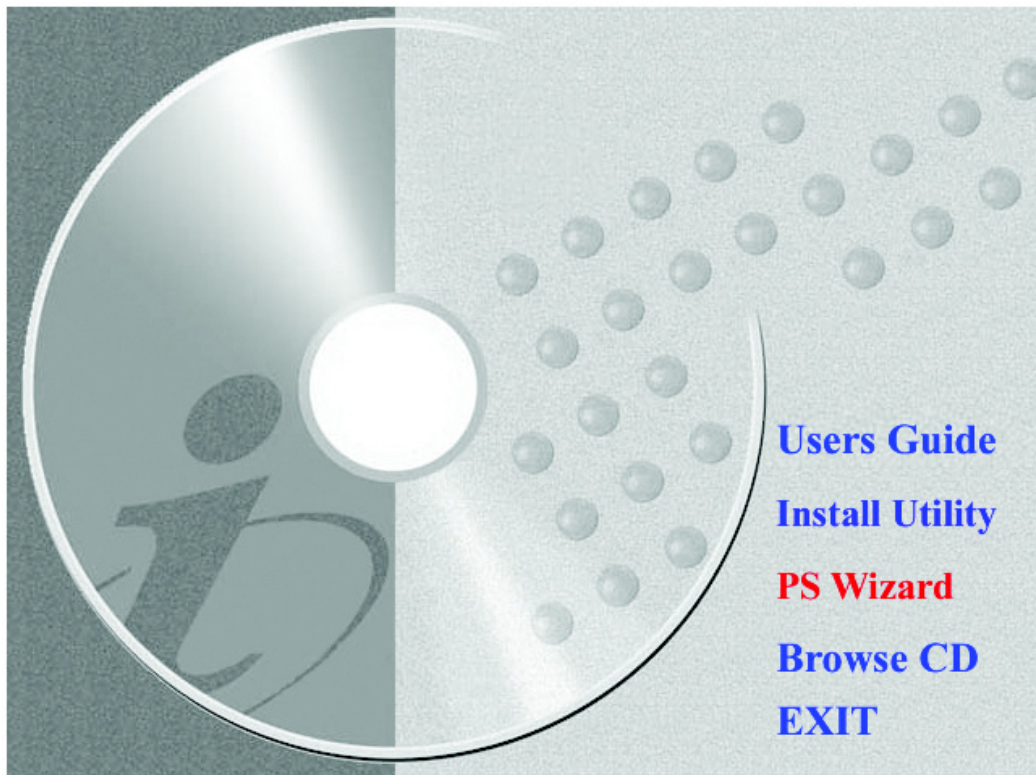
Section 6

Running PS Wizard

Warning: Make sure you have installed the printer driver locally on every computer in your network before running the PS Wizard. Otherwise, the PS Wizard will not run properly. Be sure to run the PS Wizard on all the computers in your network.

Step 1 Insert the provided CD and wait for the setup menu to appear.

Step 2 Click on **PS Wizard**.

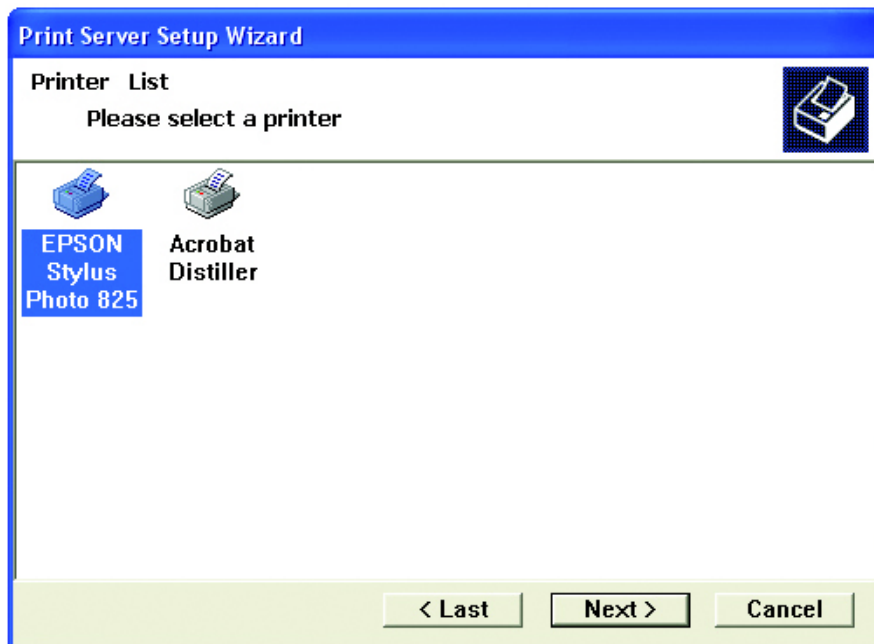


Note: If the setup menu does not appear automatically after you have inserted the CD, go to **Start, Run,** type **D:\PS Utility\PS Wizard.exe** (where **D** is the letter of your CD drive) and click **OK**.

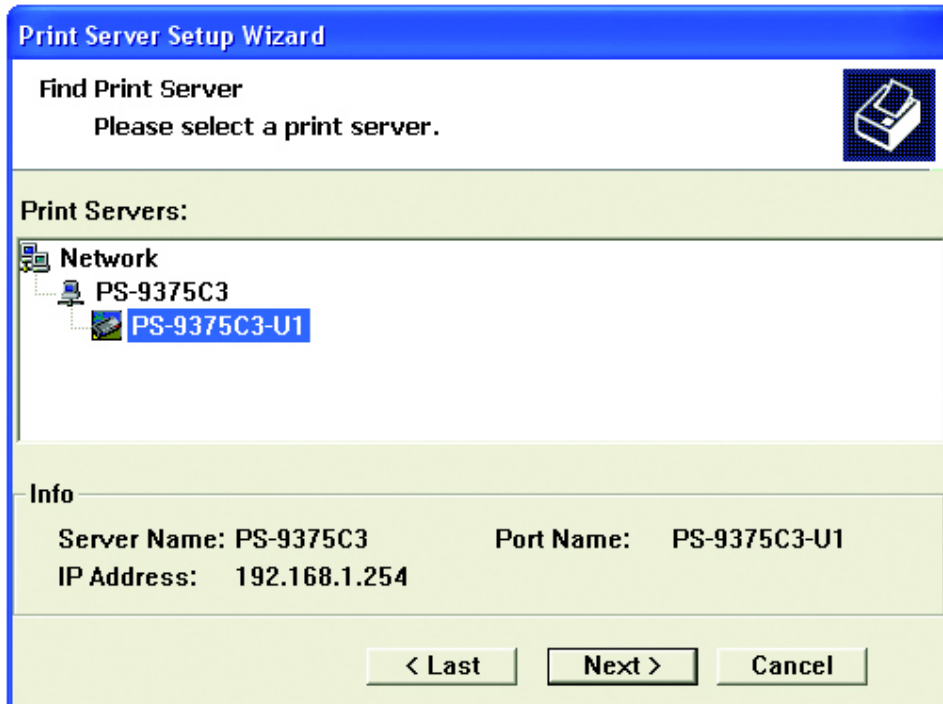
Step 3 Click **Next**.



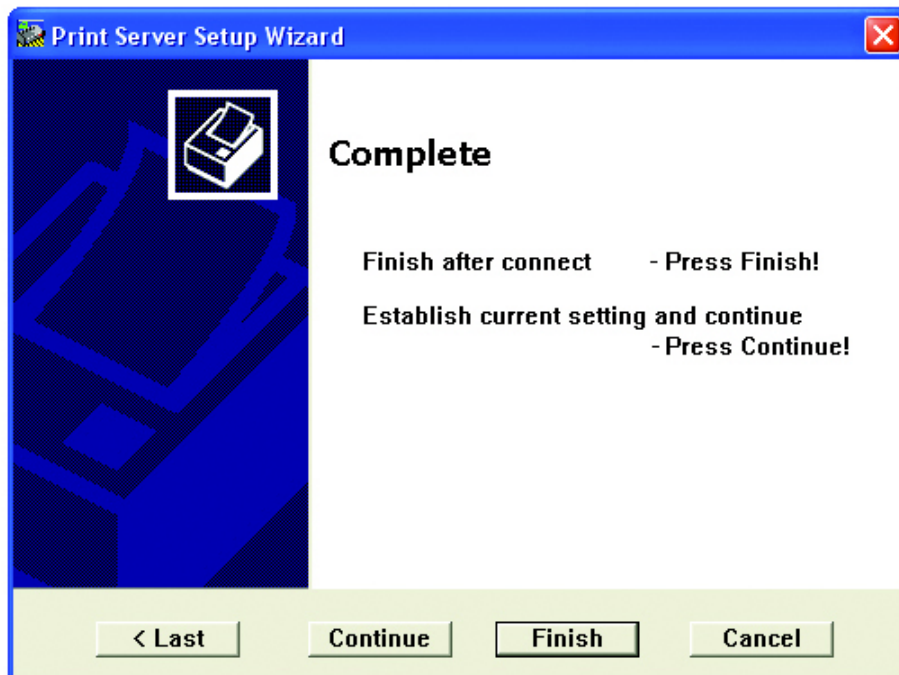
Step 4 Select the printer that is connected to the print server and click **Next**.



Step 5 Double-click on the **Print Server Name**, select the **Printer Port Name**, and click **Next**.



Step 6 Click **Reboot** (for Windows 95/98/ME) or **Finish** (for Windows 2000/XP).



Step 7 Run the **PS Wizard** on all the computers in your network that will use the print server.

You have successfully configured the print server for printing.

Section 7

Configuring Wireless Printing

The following section describes how to setup the print server for wireless printing. It is strongly recommended that you test the print server with a wired connection first before moving on to configure wireless printing.

Note: You should use a wired connection to configure the following wireless settings before unplugging the network cable from the print server.

Step 1 Open the web browser and type in the IP address of your print server. (Default is 192.168.1.254)

Step 2 Verify the Printer Status is **Online**.

The screenshot displays a web interface for a print server. At the top, there are four navigation tabs: Management, Configuration, Tools, and Help. On the left side, there is a vertical menu with the following items: Management (highlighted), System, Wireless, Network, and User. The main content area is divided into three sections: Device Status, Printer Status, and Ethernet Status. Each section contains a list of key-value pairs. At the bottom of the main content area, there is a 'Refresh' button.

Management	Configuration	Tools	Help
Management			
System			
Wireless			
Network			
User			

Device Status	
Server Name	: PS-036DE8
Model	: Wireless USB Print Server
Firmware Version	: 3.03 (2004-03-12)
MAC Address	: 00 03 1B 03 6D E8
IP Address	: 192.168.7.254 (Manual)
Up Time	: 0 days, 00:08:31

Printer Status	
USB	: Printer Name : PS-036DE8-U1
	: Printer Speed : Full Speed (12M bps)
	: Printer Status : On line
Total Print Jobs	: 2
Total Print Size	: 470 KBytes
Printing Status	: Idle
Name	:
MAC	:
IP	:
Protocol	:
Spooling Size	: 0 Bytes
Printing Size	: 0 Bytes

Ethernet Status	
Link	: Yes
Speed	: 100M bps
Duplex	: Yes
Tx Packets	: 136
Tx Errors	: 0
Rx Packets	: 100
Rx Errors	: 0

Step 3 Click on **Configuration** and then **Wireless**.

Step 4 If you are printing through a wireless router, make sure the **Connection Mode** is set to **Infrastructure**.

Management	Configuration	Tools	Help
<div style="border: 1px solid orange; padding: 5px;"> <p>Configuration</p> <p>System</p> <p>Wireless</p> <p>Network</p> <p>User</p> <p>E-mail</p> <p>SNMP</p> </div>			
<p>Wireless Interface</p> <p>Connection Mode : <input checked="" type="radio"/> Infrastructure <input type="radio"/> Ad-Hoc</p> <p>SSID : <input type="text" value="default"/> (Manually Input or Select from List)</p> <p style="margin-left: 20px;">wireless <input type="button" value="v"/></p> <p style="margin-left: 20px;"><input type="button" value="Site Survey"/></p> <p>Wireless Channel : <input type="text" value="11"/> <input type="button" value="v"/></p> <p>Transmission Rate : <input type="text" value="Fully Automatic"/> <input type="button" value="v"/></p>			
<p>WEP Encryption</p> <p>WEP Encryption : <input checked="" type="radio"/> Disable <input type="radio"/> 64 bits <input type="radio"/> 128 bits</p> <p>WEP Key Format : <input type="radio"/> ASCII <input checked="" type="radio"/> HEX</p> <p>Key 1 : <input type="text"/></p> <p>Key 2 : <input type="text"/></p> <p>Key 3 : <input type="text"/></p> <p>Key 4 : <input type="text"/></p> <p>Encrypt Data Transmissions Using : <input type="text" value="Key 1"/> <input type="button" value="v"/></p>			
<p>Advanced Setting</p> <p>Beacon Interval : <input type="text" value="100"/> (ms)</p> <p>Preamble : <input checked="" type="radio"/> Long <input type="radio"/> Short</p> <p>Authentication Type : <input type="radio"/> Open System <input type="radio"/> Shared Key <input checked="" type="radio"/> Both</p> <p style="text-align: center;"><input type="button" value="Save"/> <input type="button" value="Cancel"/></p>			

Step 5 Type in the **SSID** (network name) of your wireless router in the **SSID field**, or use the drop-down menu directly below the **SSID field** to choose your wireless router.

Note: you can also click on the **Site Survey** button to view all the available wireless network. If you do not see your wireless router, click on **Refresh** and/or reset your wireless router.

On Site Wireless Networks						
	SSID	MAC	Channel	Mode	WEP	Signal
1	AP_Router	00 90 4B 28 7C 96	6	Infrastructure	No	81%
2	wireless	00 90 96 52 3A 69	11	Infrastructure	No	57%

Step 6 Click **Save** to save the settings.

Step 7 Click on **Management** and go to **Wireless**. Verify that the Connection Mode is **Infrastructure** and the Link is **Yes**. Also verify that the SSID matches the SSID of your wireless router.

Management	Configuration	Tools	Help
Management	Wireless Status		
System	Connection Mode	:	Infrastructure
Wireless	Link	:	Yes
Network	SSID	:	My Router (MAC : 00 E0 98 4D D3 84)
User	Channel	:	11
	Transmission Rate	:	54M bps
	WEP Encryption	:	Disable
	Tx Packets	:	387
	Tx Errors	:	0
	Rx Packets	:	505
	Rx Errors	:	0
	<input type="button" value="Refresh"/>		

Note: If the Link does not say **Yes**, click on the **Refresh** button until it displays **Yes**.

Also, if you have enabled encryption on your router, you will also need to set the identical encryption settings on the print server. For more information regarding how to set the encryption settings, please refer to the user's manual on the provided CD.

Step 8 Verify your wireless connection with the steps outlined in **Section 5**.

You have successfully configured the print server for wireless printing.

If you want to print directly to the print server (bypassing the wireless router), follow the steps below. You should use a wired connection to configure the following wireless settings before unplugging the network cable from the print server.

Note: Your wireless computer may lose Internet connection if you set it to print directly to the print server.

Step 1 Go to Configuration, Wireless and set the **Connection Mode** to **Ad-Hoc**.

Management Configuration Tools Help

Configuration System Wireless Network User E-mail SNMP

Wireless Interface

Connection Mode : Infrastructure Ad-Hoc

SSID : PrintServer (Manually Input or Select from List)

wireless

Site Survey

Wireless Channel : 8

Transmission Rate : Fully Automatic

WEP Encryption

WEP Encryption : Disable 64 bits 128 bits

WEP Key Format : ASCII HEX

Key 1 :

Key 2 :

Key 3 :

Key 4 :

Encrypt Data Transmissions Using : Key 1

Advanced Setting

Beacon Interval : 100 (ms)

Preamble : Long Short

Authentication Type : Open System Shared Key Both

Save Cancel

Step 2 Rename the **SSID** of the print server or keep it as **default**.

Step 3 Set the desired **Wireless Channel**.

Step 4 Click **Save**.

Step 5 Click on **Management** and go to **Wireless**. Verify that the Connection Mode is **Ad-Hoc** and the Link is **Yes**. Also verify that the SSID matches the SSID you have set.

Management Configuration Tools Help

Management System Wireless Network User

Wireless Status

Connection Mode : Adhoc

Link : Yes

SSID : PrintServer (MAC : 00 03 1B 03 6D E8)

Channel : 11

Transmission Rate : 54M bps

WEP Encryption : Disable

Tx Packets : 45

Tx Errors : 0

Rx Packets : 0

Rx Errors : 0

Refresh

Note: If the Link does not say **Yes**, click on the **Refresh** button until it displays **Yes**.

Step 6 Manually change the TCP/IP setting of your wireless client to use a static IP address and assign the appropriate **IP Address**, **Subnet Mask**, and **Default Gateway** according to your network. If you do not know how to do this, it is recommended that you do not print directly to the print server, but print through the wireless router instead.

Step 7 Configure your wireless adapter to **Ad-Hoc** mode, using the same **SSID** and **Channel** number as the print server.

Note: If you have enabled encryption on your wireless network adapter, you will also need to set the identical encryption settings on the print server. For more information regarding how to set the encryption settings, please refer to the user's manual on the provided CD.

This print server does not support most multi-functional printers (i.e. printers with scanner, fax, copier, etc. functions). If your printer is a multi-functional printer it may not work with this print server. For a list of compatible printers, please visit our web site at www.airlinkplus.com

For more information on how to use the web configuration or setup for Mac OS, please refer to the User's Manual in the provided CD.

Section 8

Technical Support

E-mail: support@airlinkplus.com

Toll Free: 1-888-746-3238

Web Site: www.airlinkplus.com

Free Manuals Download Website

<http://myh66.com>

<http://usermanuals.us>

<http://www.somanuals.com>

<http://www.4manuals.cc>

<http://www.manual-lib.com>

<http://www.404manual.com>

<http://www.luxmanual.com>

<http://aubethermostatmanual.com>

Golf course search by state

<http://golfingnear.com>

Email search by domain

<http://emailbydomain.com>

Auto manuals search

<http://auto.somanuals.com>

TV manuals search

<http://tv.somanuals.com>