



Model # APSUSB1

Installation Guide

Section 1

Connecting the Print Server to your network

Warning: Do not plug the power cord to the Print Server until you have reached Step 4.

Step 1 Connect one end of the Ethernet cable to the RJ-45 port of the Print Server and attach the other end of the cable to a hub/switch/router. See *Fig. 1.1*

Step 2 Make sure the printer is powered **OFF**, then connect one end of the USB cable to the USB port of the Print Server and attach the other end of the cable to the USB port of the printer.

Step 3 Turn **ON** the printer.

Step 4 Plug one end of the power cord into the Print Server and the other end into an electrical outlet.

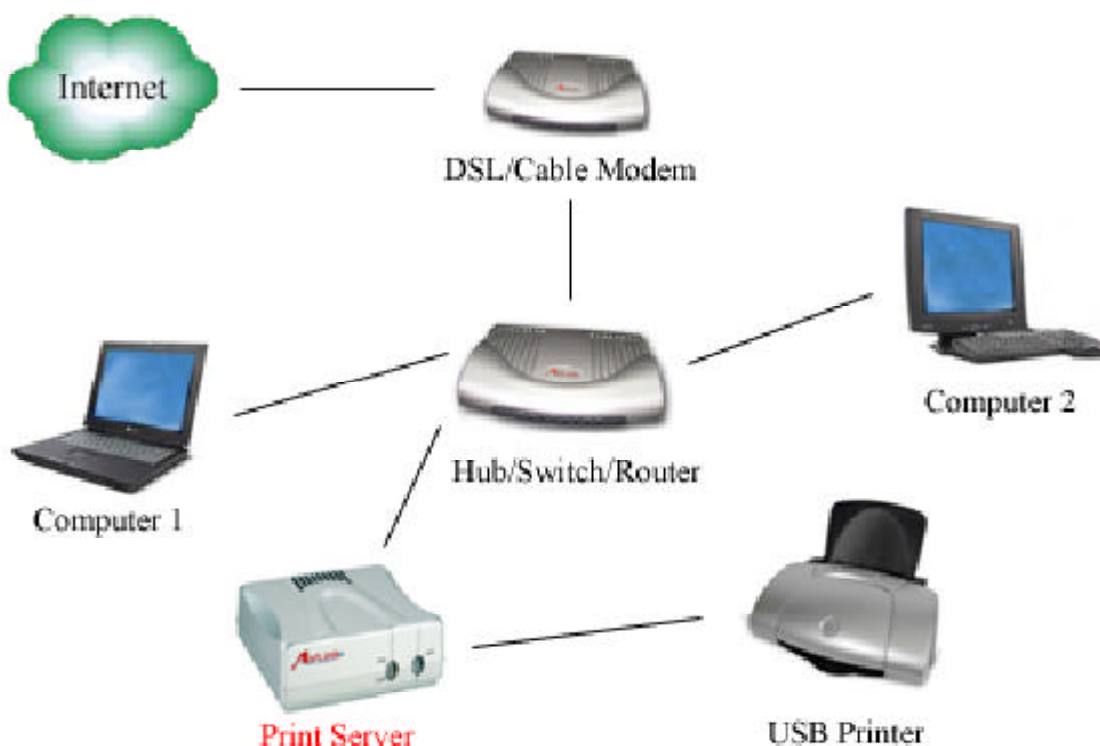


Fig. 1.1

Section 2

Configuring Client IP Address

Note: The default IP address of the Print Server is **192.168.1.254** with a subnet mask of **255.255.255.0**. The Print Server must be on the same subnet as your network in order for you to print through the Print Server. Follow the steps below to access the Print Server's Web Configuration Utility. If your network ID is already using the **192.168.1.x** segment, skip to **Section 3, Accessing the Web Configuration Utility**.

For Windows 2000/XP

Step 1 On one of the computers in your network, right-click on **My Network Places** on your desktop and right-click on **Local Area Connection**.

Step 2 Select **Internet Protocol (TCP/IP)** and click **Properties**. See Fig. 2.1

Step 3 Write down your current network settings including **IP address**, **subnet mask**, and **default gateway** on a piece of paper. You will need these information after you have set up the print server in Section 3.

Step 4 Select **Use the following IP address** and enter an IP address of **192.168.1.x** (where **x** is a number between 2 ~ 253 and is not currently assigned to any device on your network).

Step 5 Enter **255.255.255.0** for the **Subnet mask**.

Step 6 Enter the IP address of your **Default gateway**. See Fig. 2.2

Step 7 Click **OK** and **OK** again.

Step 8 Go to **Section 3, Accessing the Web Configuration Utility**.

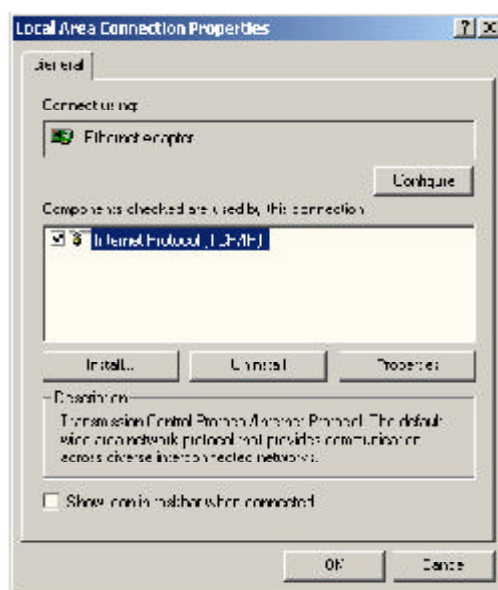


Fig. 2.1

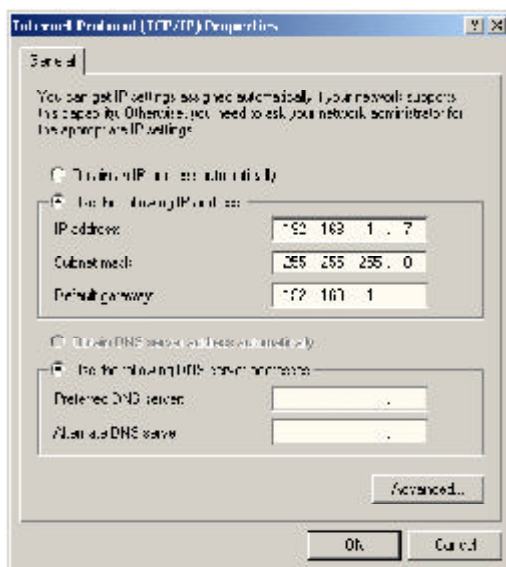


Fig. 2.2

For Windows 95/98/ME

Step 1 Go to **Start, Settings, Control Panel**, and double-click the **Network** icon.

Step 2 Select **TCP/IP** and click **Properties**. See Fig. 2.3

Step 3 Write down your current network settings including **IP Address** and **Subnet Mask** on a piece of paper. You will need these information after you have set up the print server in Section 3.

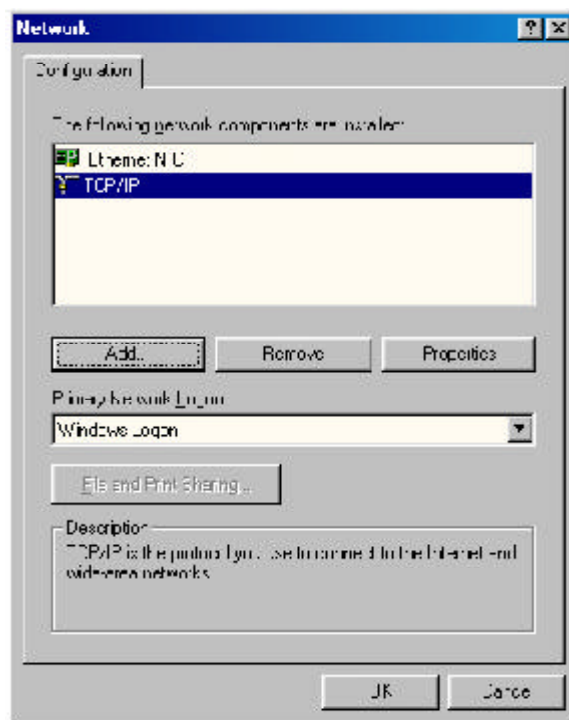


Fig. 2.3

Step 4 Select **Specify an IP address** and enter an IP address of **192.168.1.x** (where **x** is a number between 2 ~ 253 and is not currently assigned to any device on your network).

Step 5 Enter **255.255.255.0** for the **Subnet mask**. See Fig. 2.4

Step 6 Click **OK** and **OK** again.

Step 7 Restart the computer if you are prompted to do so.

Step 8 Go to **Section 3, Accessing the Web Configuration Utility**.

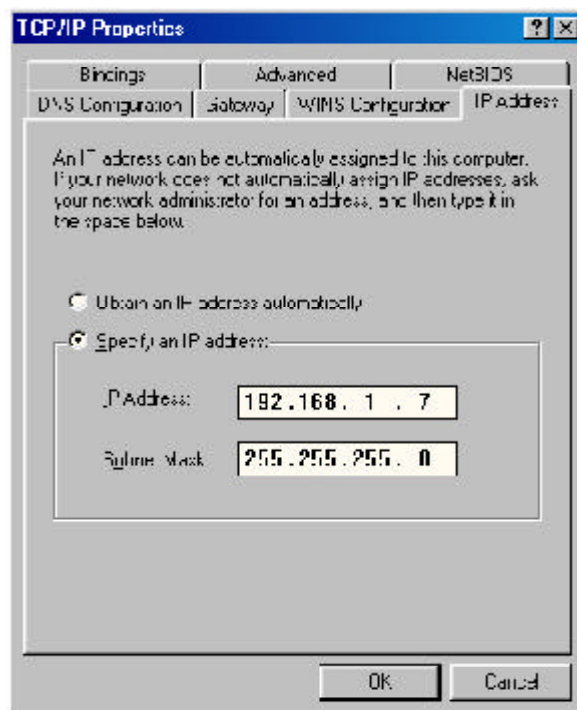


Fig. 2.4

Section 3

Accessing the Web Configuration Utility

Step 1 Open the web browser and type the default IP address of the Print Server: **192.168.1.254** See Fig. 3.1

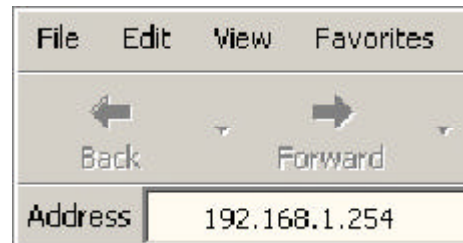


Fig. 3.1

Step 2 The **Welcome** screen will appear. See Fig. 3.2



Fig. 3.2

Step 3 Click on **Configuration**. You may rename the **Print Server name** and **Port name** or leave them with the default.

Step 4 Write down on a piece of paper the **Port name** you want to use. Be sure to click **Save** when you are done editing the names. See Fig. 3.3

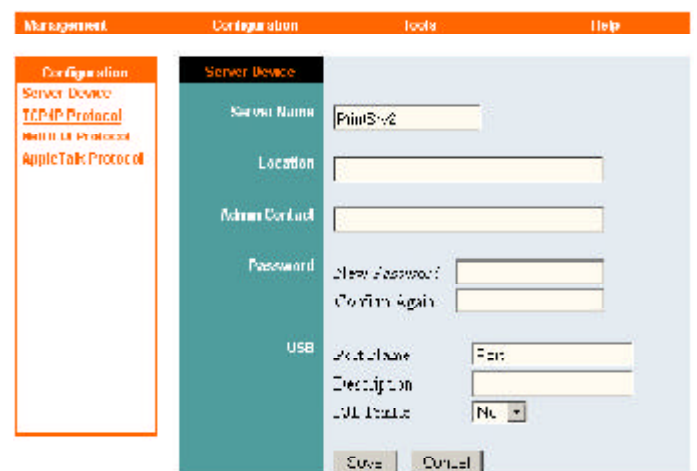


Fig 3.3

Step 5 Click on **TCP/IP Protocol** under **Configuration**. See *Fig. 3.4*

Step 6 You can manually assign an IP address and subnet mask to allow the Print Server to be on the same subnet as your network, or you can choose to obtain an IP address automatically by **RARP**, **BOOTP**, or **DHCP**.

Note: This Installation Guide uses the default IP address as an example.

Step 7 Write down on a piece of paper the **IP address** for the Print Server you want to use. Be sure to click **Save** when you are done configuring the settings.

Step 8 Close the web browser.

Step 9 If you have changed your computer's IP address in order to access the web configuration utility, you can now change the settings back to your original settings.

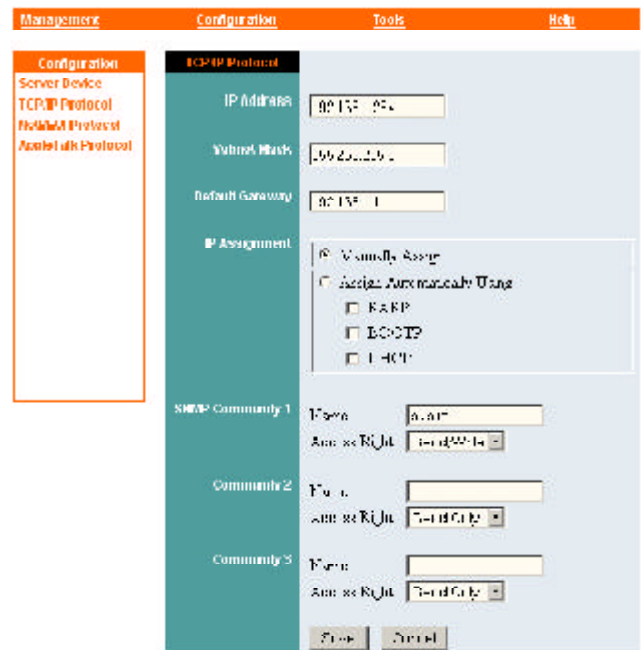


Fig. 3.4

Section 4

Adding Printer

For Windows 2000/XP

Step 1 Go to **Start, Settings, Printers**. (**Printers and Faxes** for XP) and select **Add Printer**.

Step 2 Click **Next** at the **Add Printer Wizard**.

Step 3 Select **Local Printer**, uncheck the **Automatically detect and install my Plug and Play printer** check box, and click **Next**. See *Fig. 4.1*

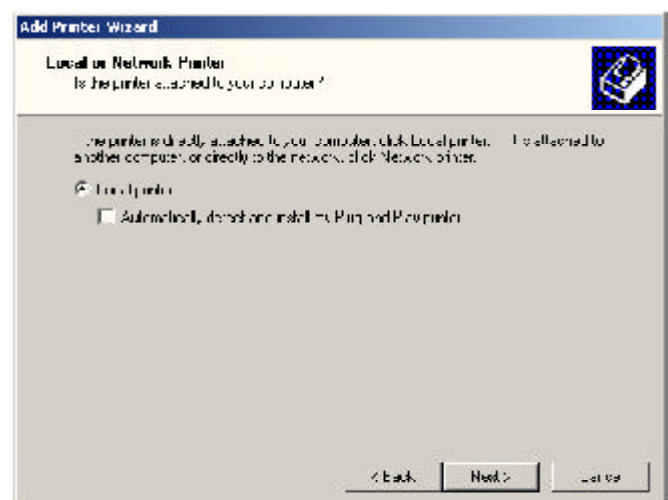


Fig. 4.1

Step 4 Select **Create a new port**. At the drop-down menu, select **Standard TCP/IP Port** and click **Next**. See Fig. 4.2

Step 5 Click **Next** at the **Add Standard TCP/IP Printer Port Wizard**.

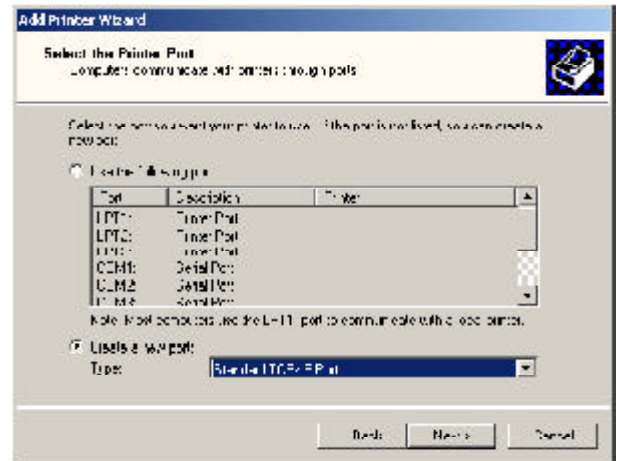


Fig. 4.2

Step 6 Type in the **IP address** of the Print Server and the **port name** you have written down on the piece of paper in Section 3 and click **Next**. See Fig. 4.3

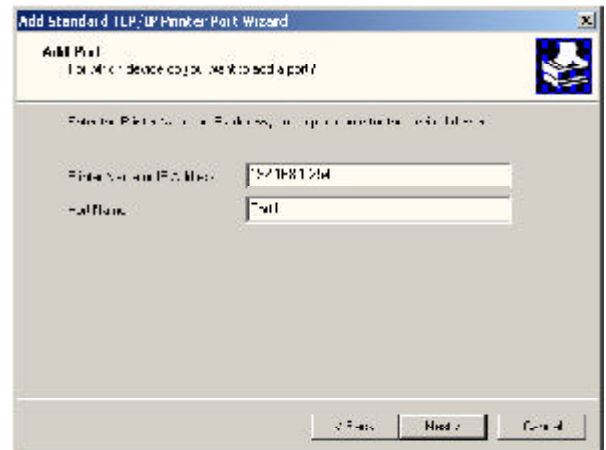


Fig 4.3

Step 7 Select **Custom** then click on **Settings**. See Fig. 4.4

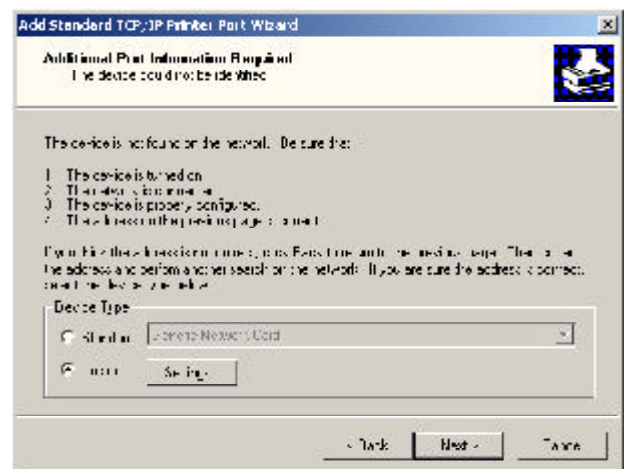


Fig. 4.4

Step 8 Select **LPR** for the **Protocol**, enter the **Port Name** in the **Queue Name** field, and click **OK**. See Fig. 4.5

Step 9 Click **Next**.

Step 10 Click **Finish**.

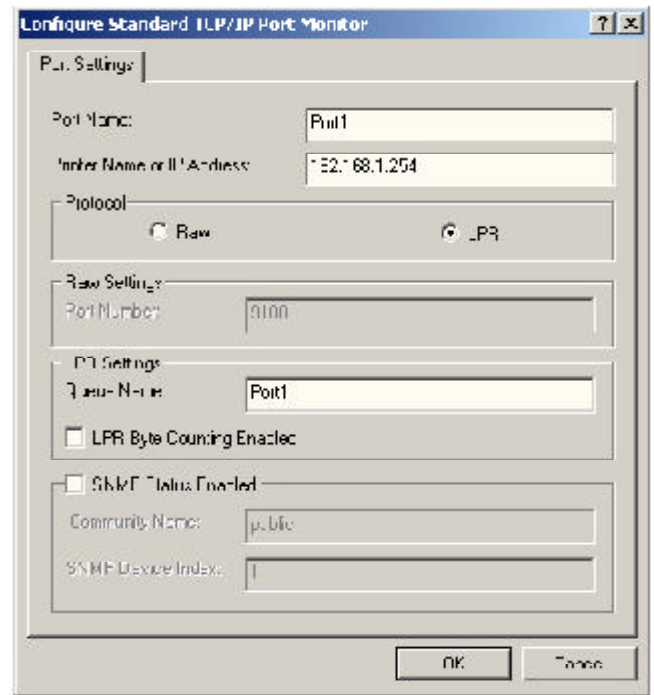


Fig. 4.5

Step 11 Select the manufacturer and model of your printer and click **Next**.

Note: If your printer is not on the list, click **Have Disk**, insert the printer driver disk that came with your printer, and click **Next**. See Fig. 4.6

Step 12 If a driver for the printer is already installed, select **Keep existing driver** and click **Next**.

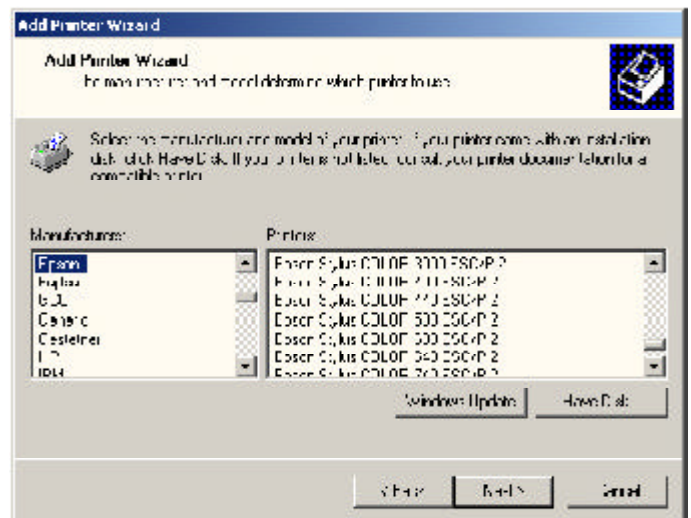


Fig. 4.6

Step 13 Type in a name for your printer and click **Next**. For Windows 2000, select if you want to set this printer as the default printer. See Fig. 4.7

Step 14 Select if you want to print a **test page** and click **Next**.

Step 15 Click **Finish**.

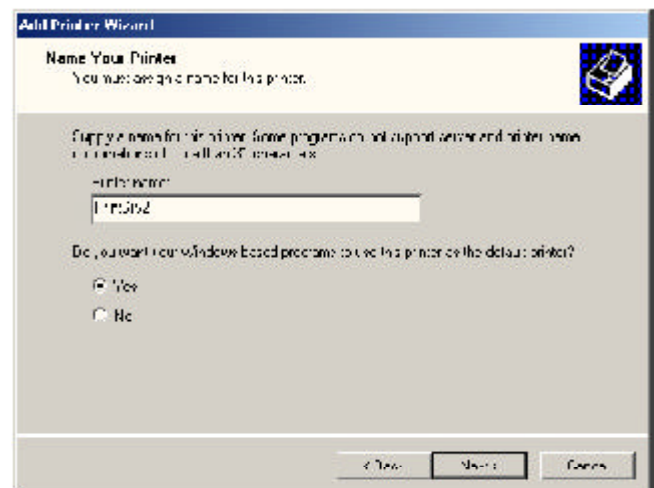


Fig. 4.7

For Windows 95/98/ME

Step 1 Go to **Start, Settings, Control Panel**, and double-click on **Network**.

Step 2 Click **Add**.

Step 3 Select **Client** and click **Add**. See *Fig. 4.8*

Step 4 Click **Have Disk**.

Step 5 Insert the provided CD into the CD-ROM drive.

Step 6 Click **Browse** and browse to your CD-ROM drive.

Step 7 Select the letter of your CD-ROM drive, double-click on the **lpr** folder, select **lpr.inf**, and click **OK**. See *Fig. 4.9*

Step 8 Click **OK** to accept the location of the LPR file. See *Fig. 4.10*

Step 9 Click **OK**.

Step 10 Select **LPR for TCP/IP Printing** and click **Properties**. See *Fig. 4.11*

Step 11 Click **Add Port**.

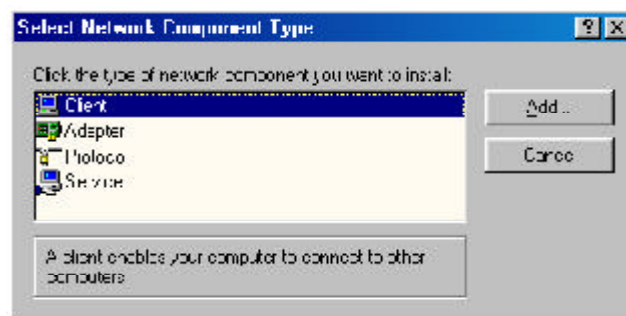


Fig. 4.8

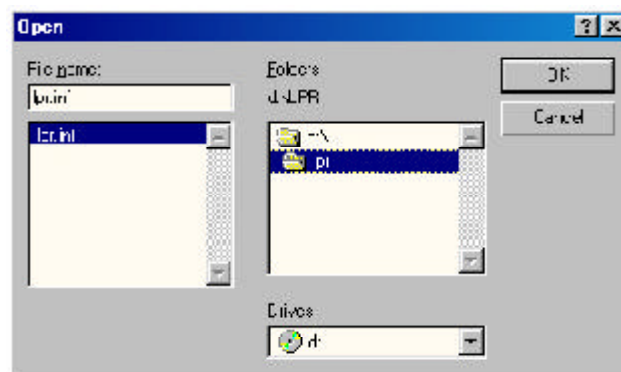


Fig. 4.9

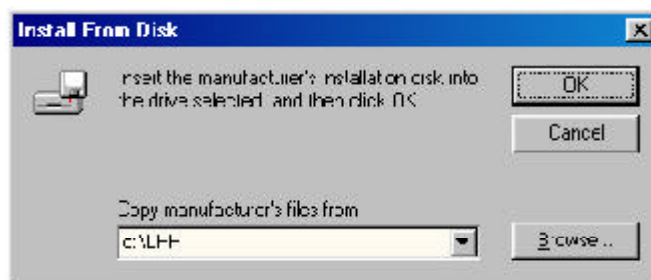


Fig. 4.10

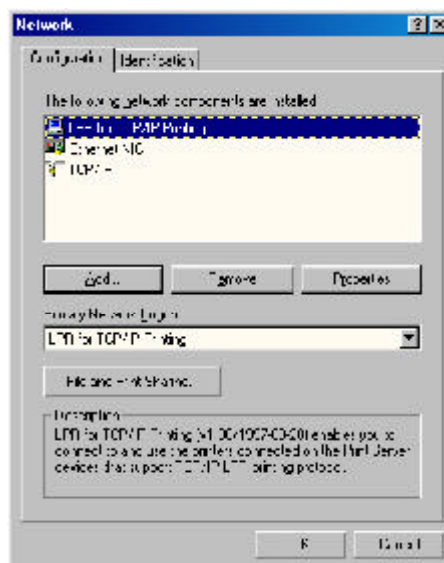


Fig. 4.11

Step 12 Type in the **IP address** of the Print Server and the **port name** you have written down on the piece of paper in Section 3 and click **OK**. See *Fig. 4.12*

Step 13 The **IP address** and the **port name** will be displayed in the **port list**. Click **OK**.

Step 14 Click **OK**.

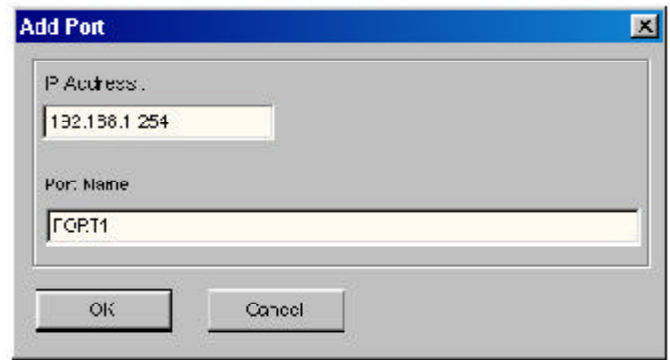


Fig. 4.12

Note: Windows 98 may prompt you for the Windows 98 CD-ROM. Insert the Windows 98 CD, and type in D:\Win98 (where **D** is the letter of your CD-ROM drive) and click **OK**. See *Fig. 4.13*

Restart the computer if you are prompted to do so.

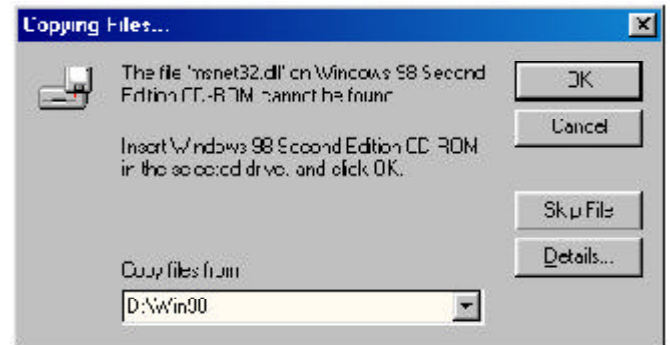


Fig. 4.13

Step 15 After your computer is restarted, go to **Start, Settings, Printers, Add Printer**.

Step 16 Click **Next** at the **Add Printer Wizard**.

Step 17 Select **Network Printer** and click **Next**.

Step 18 Click **Browse**.

Step 19 Browse to the **Printer Port**, highlight it, and click **OK**. See *Fig. 4.14*

Step 20 Verify the **Network path** is correct, select if you print from MS-DOS-based programs, and click **Next**.

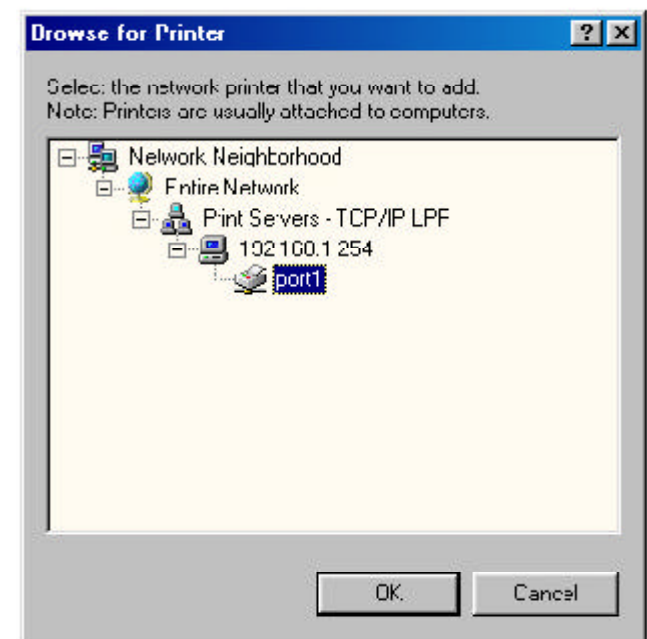


Fig. 4.14

Step 21 Select the manufacturer and model of your printer and click **Next**.

Note: If your printer is not on the list, click **Have Disk**, insert the printer driver disk that came with your printer, and click **Next**. See Fig. 4.15

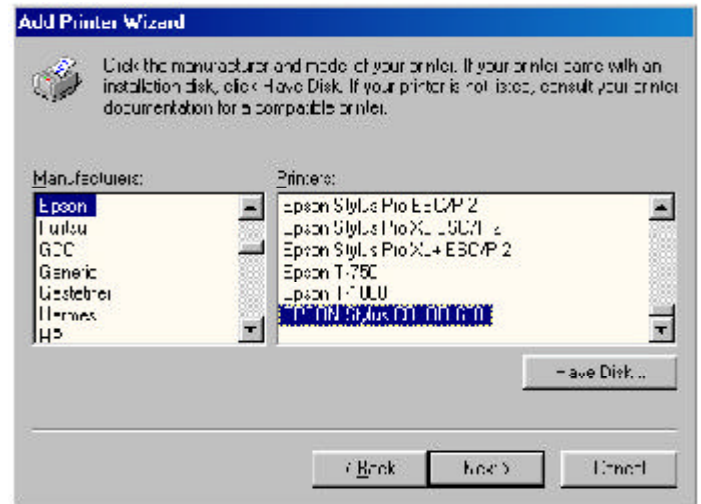


Fig. 4.15

Step 22 If a driver for the printer is already installed, select **Keep existing driver** and click **Next**. See Fig. 4.16

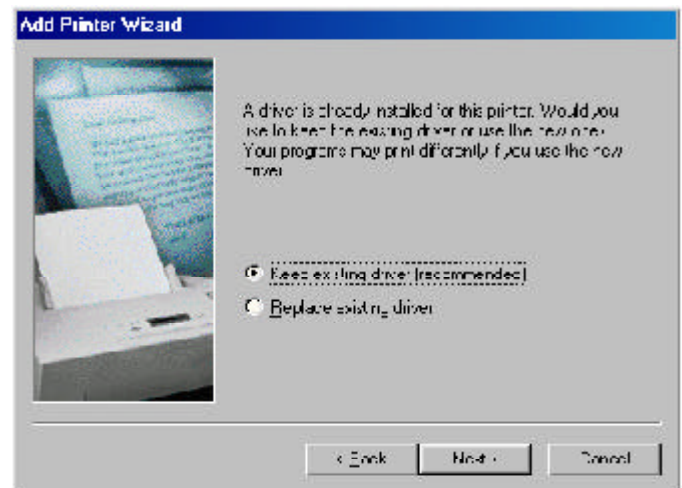


Fig. 4.16

Step 23 Type in a name for your printer, select if you want to set it as the default printer, and click **Finish**. See Fig. 4.17

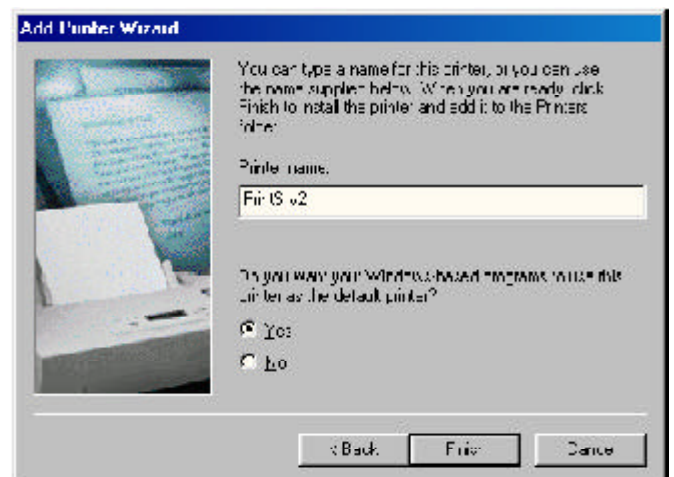


Fig. 4.17

Section 5

Using the Web Configuration Utility

You can use the **Web Configuration Utility** to configure the settings for your Print Server. There are four sections to choose from: **Management, Configuration, Tools, and Help.**

Note: As an option, you can also use the Print Server Admin utility (PS Admin) included in the provided CD to manage your Print Server. Please refer to the User's Manual in the CD for installation and operation procedures for the PS Admin.

Step 1 Open the web browser and type in the **IP address** of the Print Server.

Step 2 On the Welcome screen select the section you want to view.

Management

System Status: displays general information about the Print Server. See *Fig. 5.1*

Server Name
Model
Hardware Version
Firmware Version
MAC Address
IP Address
Up Time

Click **Refresh** to obtain the latest information.

Printer Status: displays general information about the Printer. See *Fig. 5.2*

Printer Name
Printer Status

Click **Refresh** to obtain the latest information.



Fig. 5.1



Fig. 5.2

Configuration

Server Device: Configures the Print Server properties. See Fig. 5.3

Server Name: Assign a name to the Print Server or keep the default.

Location: (optional) Indicate where the Print Server is located.

Admin Contact: (optional) Indicate the administrator for the Print Server.

Password: Password for accessing the Print Server.

USB Port Name: Assign a name for the USB Port.

Description: (optional) Brief description for the USB port.

PJL Printer: This feature supports Hewlett-Packard PJP (Printer Job Language) standard for bi-directional printing.

Click **Save** to update any changes you have made.

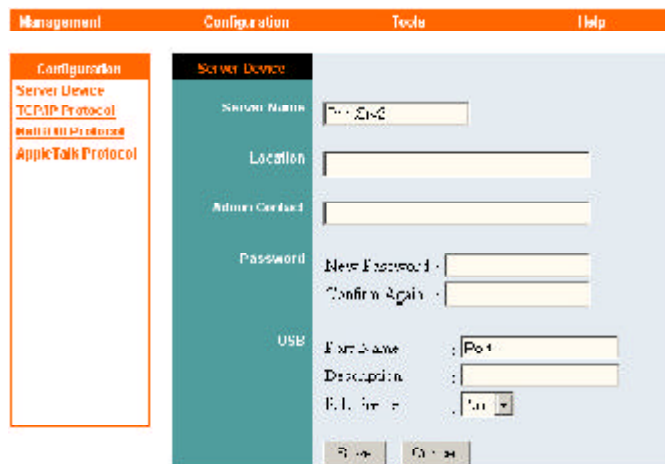


Fig. 5.3

TCP/IP Protocol: Configures the TCP/IP properties of the Print Server. See Fig. 5.4

IP Address: Assign an IP address to the Print Server or keep the default.

Subnet Mask: Assign a subnet mask to the Print Server or keep the default.

Default Gateway: Enter the IP address of the Default Gateway of your network.

IP Assignment: Choose either to manually assign an IP address to the Print Server, or automatically obtain an IP address by **RARP**, **BOOTP**, or **DHCP**.

Click **Save** to update any changes you have made.

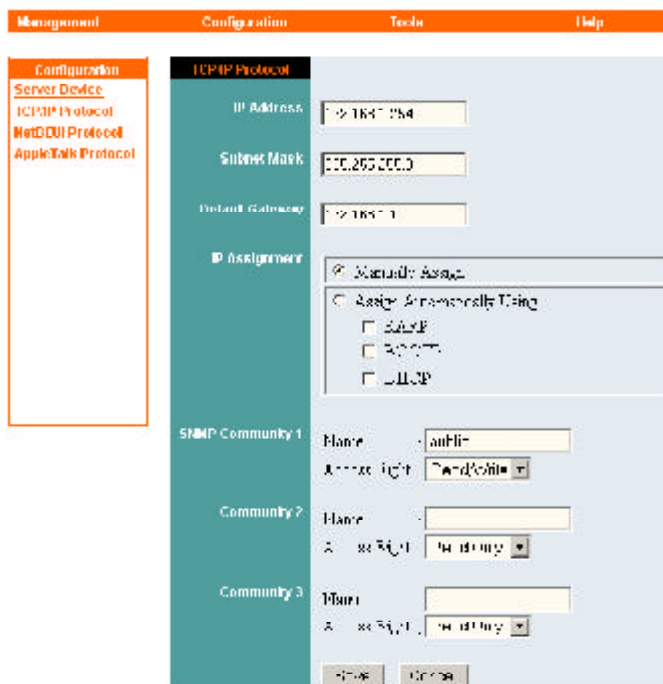


Fig. 5.4

NetBEUI Protocol: Configures the settings for NetBEUI printing. See Fig. 5.5

Workgroup: Enter the name of your workgroup

Maximum Connected Stations: Set the maximum number of stations that are allowed to connect to the print server at the same time.

Maximum Number of Sessions: Set the maximum number of print sessions that are allowed to print at one time.

Click **Save** to update any changes you have made.

AppleTalk Protocol: Configures the settings for AppleTalk printing. See Fig. 5.6

AppleTalk Zone: Enter the name of your zone.

Printer Type: Enter your printer type

PostScript Level: Select the postscript level

Font Group: Select the font group

Click **Save** to update any changes you have made.

Tools

Print Test: Prints an ASCII test page from the Print Server to the printer. Your USB printer must support Native DOS mode printing. Click **Test** to print the test page. See Fig. 5.7

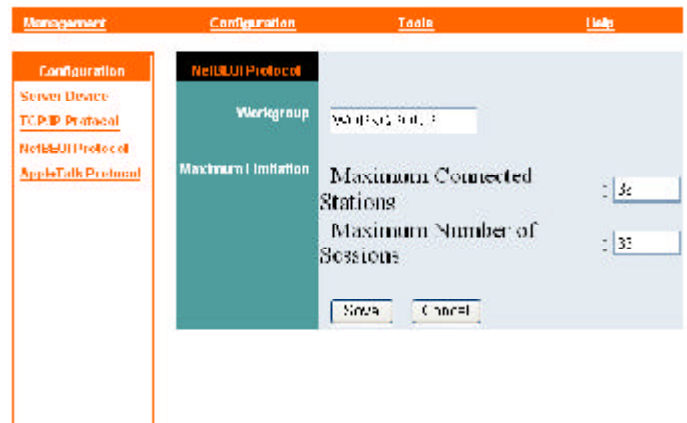


Fig. 5.5

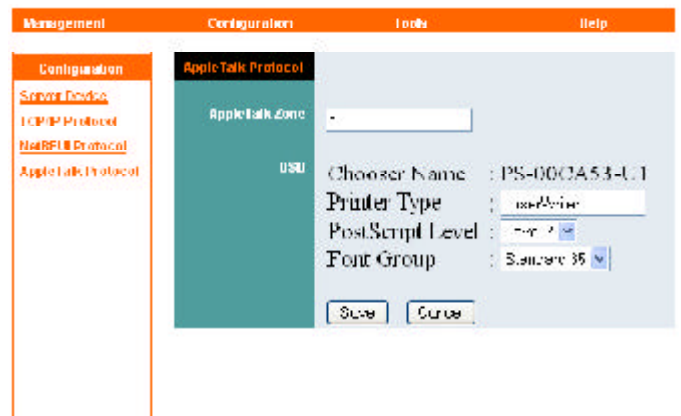


Fig. 5.6

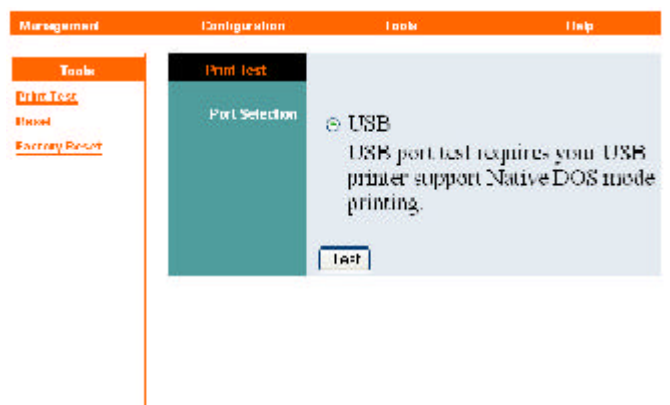


Fig. 5.7

Reset: Restart the Print Server. Click **Yes** to restart the Print Server. See *Fig. 5.7*



Fig. 5.7

Factory Reset: Reset all settings to factory default and restart the Print Server. The IP address of the Print Server will return to the factory default of **192.168.1.254**. Click **Yes** to Factory Reset and restart the Print Server. See *Fig. 5.8*

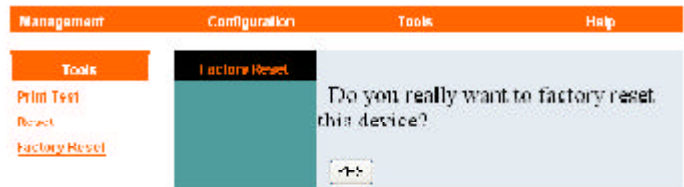


Fig. 5.8

Help

About: Displays the version number of the Print Server: See *Fig. 5.9*



Fig. 5.9

Section 6

Product Specifications

Printer Connection

Printer Interface: One USB Port (ver 1.1)

Network Connection

Network Interface: RJ-45 connector for 10Base-T or 100Base-TX shielded

Network Standards: IEEE 802.3 10Base-T Ethernet, IEEE 802.3u 100Base-TX Fast Ethernet

Network Data Transfer Rate: 10/100 Mbps

Network Protocols

Ethernet Frame Types: 802.2, 802.3, Ethernet II, SNAP (auto-switching)

Transport Protocols: TCP/IP, NetBEUI, AppleTalk

TCP/IP Protocols Supported: BOOTP, SNMP, Telnet, TFTP, FTP, LPD, RARP, DHCP

Management and Diagnostics

Standard: SNMP

MIBs: MIB-II (RFC 1213)

Diagnostic LED Indicators: PW, LAN, USB

Environmental and Physical

Power Supply: External power supply providing 5VDC input

Operating Temperature: 0 degree C to 50 degree C (32 to 122 F)

Storage Temperature: -25 degree C to 55 degree C (-13 to 131 F)

Humidity: 5% to 95%, non-condensing

Emissions: FCC Class B, CE Class B

Section 7

Technical Support

E-mail: support@airlinkplus.com

Toll Free: 1-888-746-3238

Web site: www.airlinkplus.com

Free Manuals Download Website

<http://myh66.com>

<http://usermanuals.us>

<http://www.somanuals.com>

<http://www.4manuals.cc>

<http://www.manual-lib.com>

<http://www.404manual.com>

<http://www.luxmanual.com>

<http://aubethermostatmanual.com>

Golf course search by state

<http://golfingnear.com>

Email search by domain

<http://emailbydomain.com>

Auto manuals search

<http://auto.somanuals.com>

TV manuals search

<http://tv.somanuals.com>