



Home NAS
3.5" IDE Network Attached Storage
Model # ANAS250

User's Manual

Ver. 1A

Table of Content

1. Introduction	3
2. Hard Drive Installation	3
3. Configuring Home Nas	7
3.1 Status – System Information	9
3.2 IP Configuration	10
3.3 Maintenance	11
3.4 Samba Administration.....	11
3.5 FTP Configuration.....	13
3.6 Disk Utility.....	14
4. Accessing Files from HOMENAS – Windows	15
5. Accessing Files from HOMENAS – Mac OS	16
6. Using HOMENAS Configuration Utility (For Windows User Only).....	19
7. Frequently Asked Questions	22
Technical Support.....	24

1. Introduction

The HOMENAS enclosure adds the convenience of network-attached storage to homes and in small businesses, providing you a central storage location for your data and letting you share data across your network.

What's in the Package

- HOMENAS main unit
- HOMENAS vertical stand
- Securing screws
- Network cable (category 5)
- USB cable
- Power Adapter
- User Guide

Minimum System Requirements

- Apple Safari; Linux Mozilla; Internet Explorer 5.x; Netscape 6.2.x & up
- Windows XP/2000/Me/98se, Mac OS 10.3.x or above, Linux
- 3.5" IDE UMDA Hard drive formatted to FAT32 format

2. Hard Drive Installation

This section provides instructions on how to properly install a hard drive into the NAS device.

WARNING:

The Network Storage device is not hot-swappable. Please make sure that it is turned off and not connected to the power outlet when performing the following assembly procedure.

Step 1 Unfasten two screws at the rear side of device, and pull out the back cover.



Step 2 Pull out the front panel.



Step 3 Put the 3.5-inch IDE hard disk into the plate, and connect the IDE and power cables to your hard drive.



Step 4 Secure the drive to the plate on the sides with the provided four screws.



Step 5 Insert the plastic plate back to the device.

Step 6 Re-attach the back panel to the device and secure it with the two screws removed in step 1.

Step 7 Connect Home NAS to your hub, switch, or router with the provided Ethernet cable, and connect the supplied power adapter. Plug the power cord into a power outlet.

(Note: You can also connect this device to your computer directly via the provided USB or Ethernet cable to use it as an external hard drive. However, the Home Nas should not be connected with both Ethernet and USB cables at the same time.)



The Ethernet port on the HOMENAS is Auto-MDI/MDIX, which means you can connect it using either a crossover or a direct network cable.

Step 8 Turn it on by pressing the power switch on the front of the device. Verify the Power light is lit.



Congratulations! The hard drive installation is complete!

Connecting the HOMENAS to your Computer is not recommended because many features will not be able to function. The HOMENAS is a multifunctional hard drive enclosure. In addition to being a network storage device, you can also use it as a standalone external hard drive via the USB interface.

Max OS X

Driver installation is not required for systems using Mac OS 10.1.2 or above. Simply connect the HOMENAS using the included USB cable and access the data by clicking the "Untitled" HDD icon located on your Desktop.

Windows XP, 2K & Windows ME

Driver installation is not required for Windows XP, 2K and Windows Me. Simply connect the HOMENAS using the included USB cable and access the data via "My Computer".

Windows 98 (Download Drivers)

To utilize the USB connectivity, please visit www.airlink101.com to download the driver

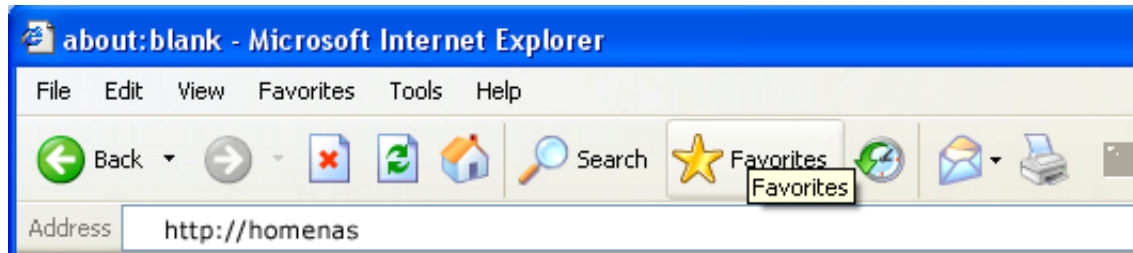
Please ensure that you install the device driver before connecting the USB port. When you complete the driver installation, reboot your computer, connect the HOMENAS to your computer and access the data via "My Computer"

3. Configuring Home Nas

The HOMENAS features a web-based control interface to manage your settings.

Windows Users

Open your web browser and enter `http://homenas` in the URL address field. You can also enter the IP address of the HOMENAS.



For security purposes, your login information can be changed via the web control interface.

When two or more HOMENAS devices are simultaneously connected to your network, you need to distinguish them by typing “`http:// Homenas-XXXX`” with their unique MAC address. Please refer to the sticker on the rear panel for the address and replace XXXX with the last four digits of the MAC address.

For example if the MAC Address of your HOMENAS is 00-14-3F-AA-01-68, you will need to enter “`http://Homenas-0168`” in the URL address bar.

You can also access data in the HOMENAS connecting it directly using the Ethernet cable with your computer. The HOMENAS will have a default IP of 169.254.0.1 when connected directly.

The HOMENAS features a web-based control interface to manage your settings.

Other Operating Systems Users

When you are planning to perform administrative tasks from a different operating system, you will need to input IP address of the HOMENAS in the browser URL address bar.

If you do not know the IP address of the HOMENAS, you will have to do this additional procedure. You will need to connect the HOMENAS directly to your

computer, and then restart the computer. After your computer is restarted, input the default IP address **169.254.0.1** in the browser URL address bar to access the web control panel.

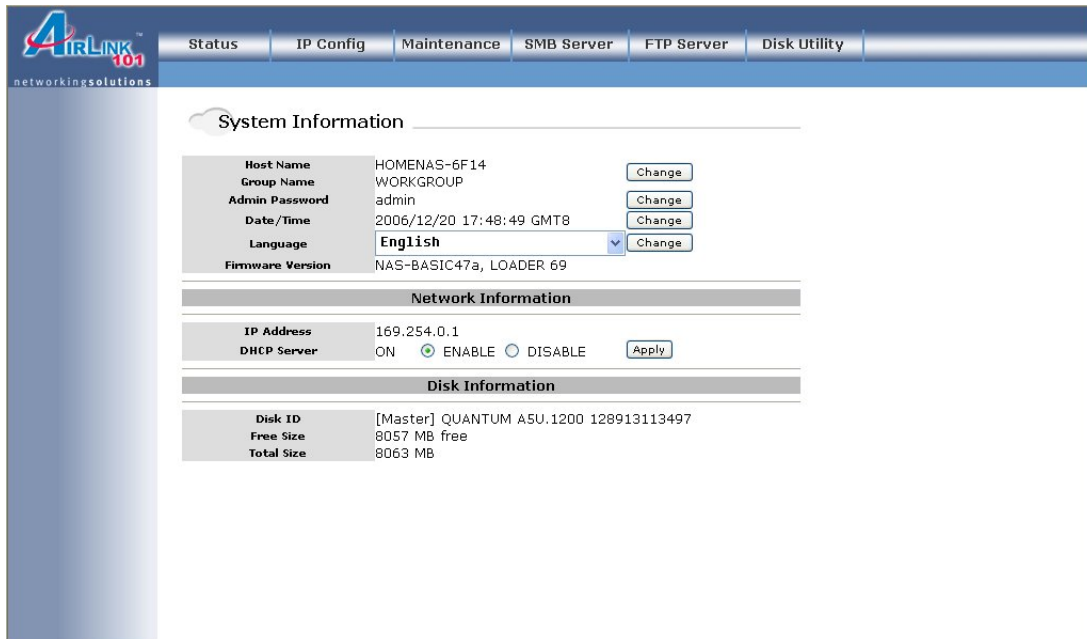
Enter the username and password information when the login window prompts up.

Default Username: **admin**

Default Password: **admin**



Upon a successful login, you will see the following screen.



An overview description of the functions on the left menu bar:

Status	Shows the data related to your HOMENAS such as networking status and hard drive information. You may also edit administration and file language settings here.
IP Config	Allows you to manually configure the IP address of the HOMENAS
Maintenance	Perform firmware upgrade, reboot or reset the HOMENAS
SMB Server	Configure the Samba feature of HOMENAS for the home/office network file sharing capabilities. You can also create/remove folders and their share permissions.
FTP Server	Configure the FTP features of the HOMENAS. You may add/remove users and their permissions.
Disk Utility	Perform hard drive maintenance routines such as Scandisk and Format.

3.1 Status – System Information

System Information

Host Name	HOMENAS-6F14	<input type="button" value="Change"/>
Group Name	WORKGROUP	<input type="button" value="Change"/>
Admin Password	admin	<input type="button" value="Change"/>
Date/Time	2006/12/20 18:02:03 GMT8	<input type="button" value="Change"/>
Language	English <input type="button" value="v"/>	<input type="button" value="Change"/>
Firmware Version	NAS-BASIC47a, LOADER 69	

Network Information

IP Address	169.254.0.1	<input type="button" value="Apply"/>
DHCP Server	ON <input checked="" type="radio"/> ENABLE <input type="radio"/> DISABLE	<input type="button" value="Apply"/>

Disk Information

Disk ID	[Master] QUANTUM A5U.1200 128913113497	
Free Size	8057 MB free	
Total Size	8063 MB	

The welcome screen displays the IP address, firmware version and the hard drive information such as the hard drive type and storage space available.

The administrator may change the web control panel login information in here. You may also change the default hostname of your HOMENAS here. Keep in mind that after you change the hostname, you will need to use it to access your HOMENAS. For example, if you changed your hostname to “*FileServer*”, please type

“http://FileServer” to access the Web Control Panel after you submitted your changes.

The Language setting is used to recognize files with characters other than English. If you have trouble reading your files on the HOMENAS, please select the appropriate language.

When you reset the HOMENAS, either by the hardware switch or through the web control panel, all the settings will return to the default setting including the hostname. The default hostname will remain as HOMENAS-XXXX (where XXXX is the last four digits of the MAC address).

3.2 IP Configuration

The administrator may use this option to manually define the IP address of the HOMENAS.

3.3 Maintenance

The administrator can perform maintenance tasks on the HOMENAS in this screen

Maintenance

Firmware Upload

Select new firmware to upload.

System Reboot

Click Reboot to have the device perform a software restart. The SYS LED blinks as the device restarts and then steady on if the restart is successful. Wait a minute before logging into the device again.

Factory Defaults

Click Reset to clear all configuration and restore to default settings. Please click "Reboot" after reset.

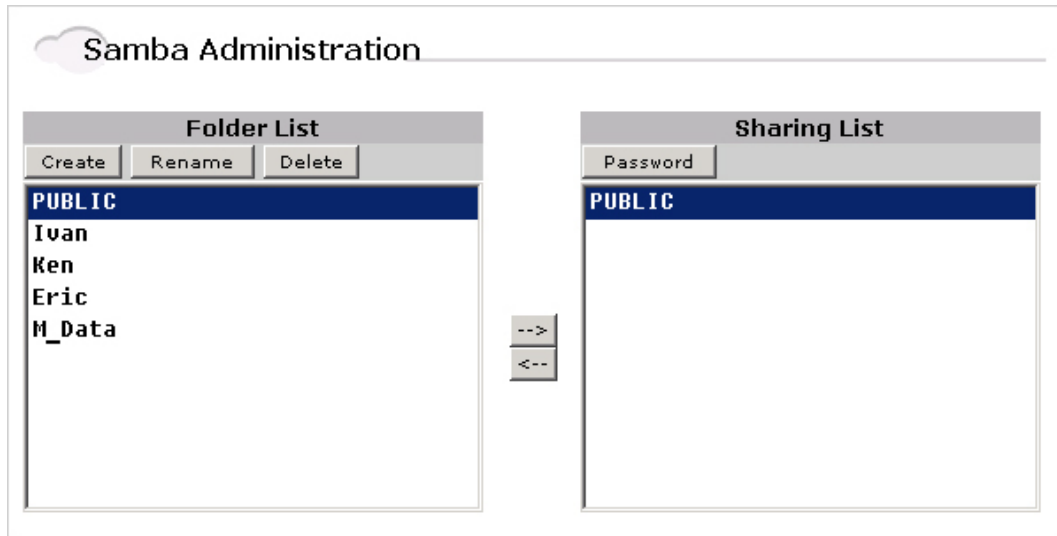
Firmware Upload: Update the firmware only if you are experiencing problems with your HOMENAS. You may go to the Airlink101 website www.airlink101.com to check the latest available firmware.

Factory Defaults: When you reset the HOMENAS, either by the hardware switch or through the web control interface, all the settings will return to the default setting including the hostname. The default hostname will return to Homenas-XXXX (where XXXX is the last four digits of the MAC address)

Important Note: After updating the firmware or resetting to factory defaults, please make sure that you restart the HOMENAS and refresh your browser.

3.4 Samba Administration

Samba enables the core function of the HOMENAS which is network file sharing. This option allows the administrator to determine the folders/directories to be shared.



In here, you can create, rename and delete folders/directories in your HOMENAS. All the folders/directories in the root directory that were previously in your hard drive before it was installed in the HOMENAS will also be shown in the “Folder List”.

The arrow keys in the middle are used to determine if the selected folder/directory is to be shared. Password protection for each shared folder can also be implemented.

Tech Tip: When creating folders/directories through the web control interface, please use only English alphabets.

Network Planning for HomeNas Connectivity

In some simple environment where the HOMENAS is serving DHCP or is assigned a static IP address, its IP address and configuration are known and will not be changed. You may use either the assigned IP address or current hostname to connect and reconnect to it or its web control interface.

In some complex environment where the HOMENAS is receiving its IP address automatically from a different DHCP server, lease configurations may cause the IP address of the HOMENAS to change from time to time. Users should use the

current hostname to connect or reconnect to it or its web control interface. Consult your network administrator for any network or network configuration related issues.

3.5 FTP Configuration

File Transfer Protocol (FTP) enables file exchange between computers on Internet, Intranet, WAN, or LAN environments using HTTP/FTP tools. The HOMENAS can work as a stand-alone FTP server when it is assigned a static IP.

FTP Configuration

FTP Status: **Enable** Port: 8080

Enable Disable

Allow anonymous?: Read only Read / Write

Home Directory: **PUBLIC**

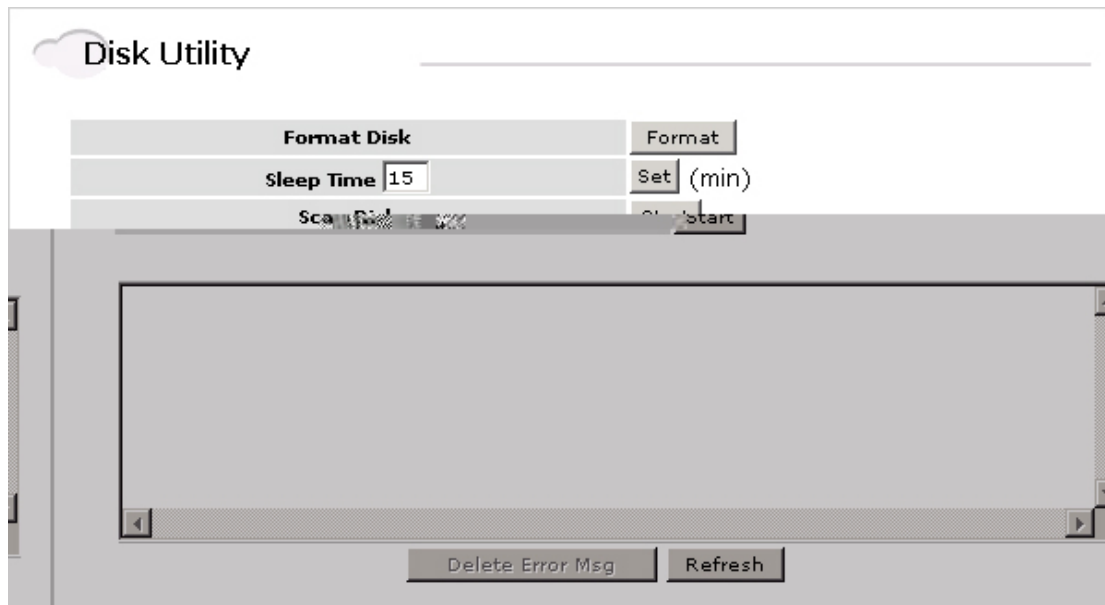
Account List

[User]	[Password]	[Address]	[En/Disable]
123	*****	RO	ENABLE

Anonymous FTP is disabled by default. The administrator can determine if the users have read or write permission and the “Home Directory” will be the folder/directory the user (or anonymous user, if configured) can access upon logging in

The Account List displays the current FTP user accounts, the administrator can add new users, modify their permissions, temporary disable users and delete users.

3.6 Disk Utility



Format Disk: If you have installed a new hard drive in the HOMENAS that is not formatted, this utility will format the disk using FAT32. It is suggested to perform Scan Disk operations (below) to verify the integrity of the drive after format.

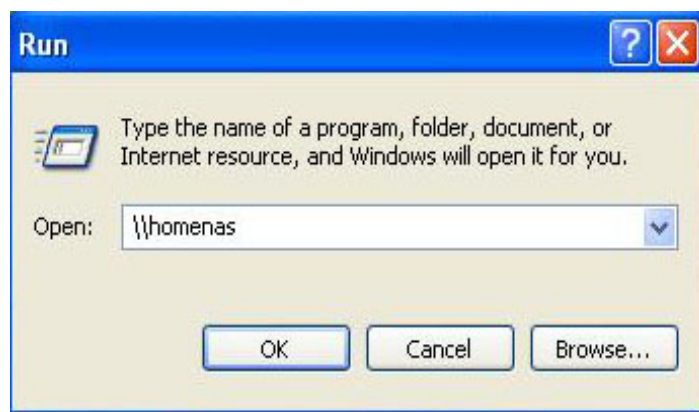
Sleep Time: The HOMENAS supports power management. This feature can determine the amount of time the hard drive has to be inactive before the HOMENAS enters sleep mode.

4. Accessing Files from HOMENAS – Windows

In Windows, data share locations can be accessed in two main ways. One is using the “Network Neighborhood” or “My Network Places” functions within windows, and navigating to the HOMENAS by searching for the hostname. Another way is to use the “Run” command using the following instructions.

Click on the Windows Start button, select “Run” from the menu and a dialogue box as shown will appear.

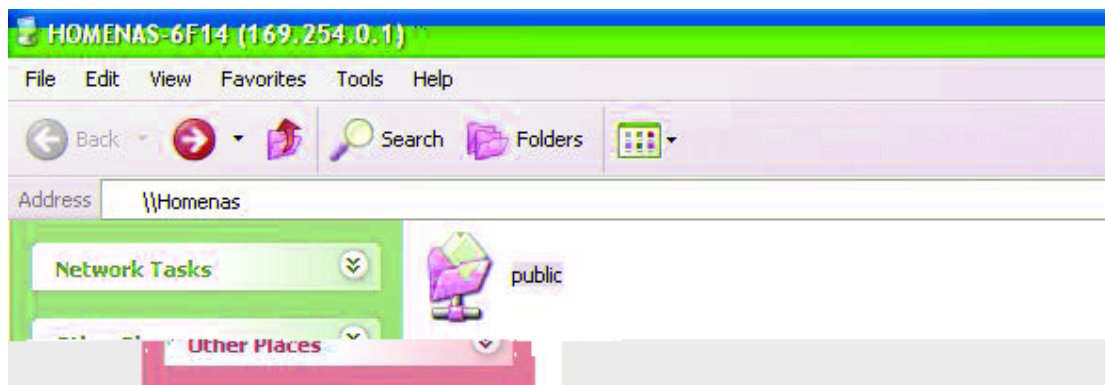
Type “\\Homenas” or current hostname in the field and click “OK”.

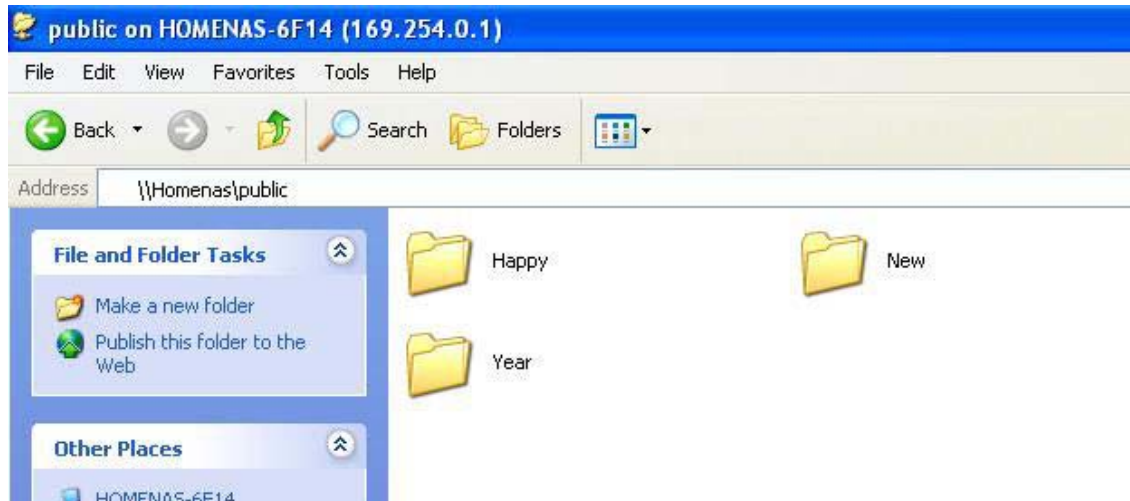


If you change the Homenas hostname, you will need to replace the word “Homenas” with it. For example, if you changed your hostname to “FileServer”, please type “\\FileServer” instead.

The Windows Explorer will appear and you should be able to see all the folders that are shared under “SMB Server” in the HOMENAS web control interface menu.

Clicking on the corresponding folder will reveal the files in that folder.



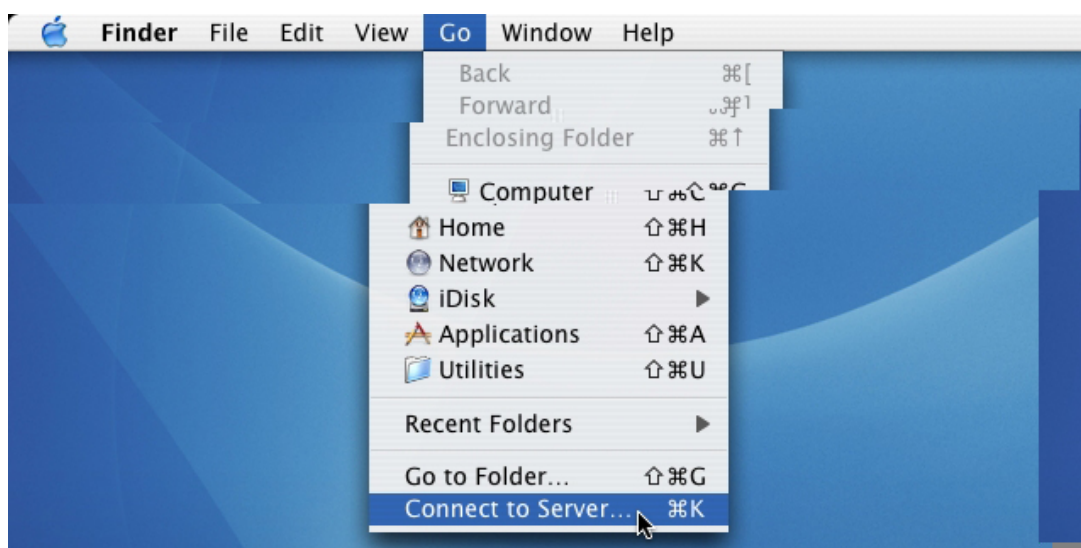


5. Accessing Files from HOMENAS – Mac OS

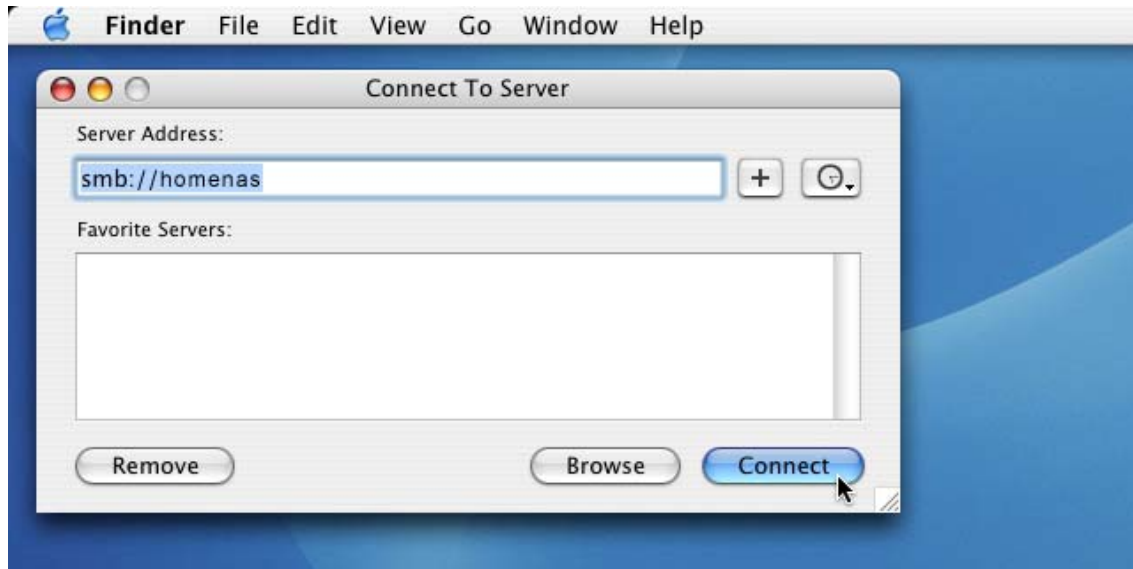
If the client computer is an Apple Macintosh running Mac OS, they will have to follow the procedure below to mount each shared folder as an SMB share to access the data.

These screenshots are taken from a iMac running OS 10.3.x and may vary slightly from your computer display.

Under Finder, select Go >> Connect to Server or use the hotkey <Command +K>



If you change the HOMENAS hostname, you will need to replace the word “homenas” with it. For example, if you changed your hostname to “FileServer”, please type “smb://FileServer” instead.



The next dialogue screen will prompt you for the folder that you will like to access. Select it and click the OK button.



You might be prompted to enter a password, unless a password was previously assigned in the control panel, you can leave it blank. After a successful mount, a network folder icon will be created based on the folder you selected as shown.

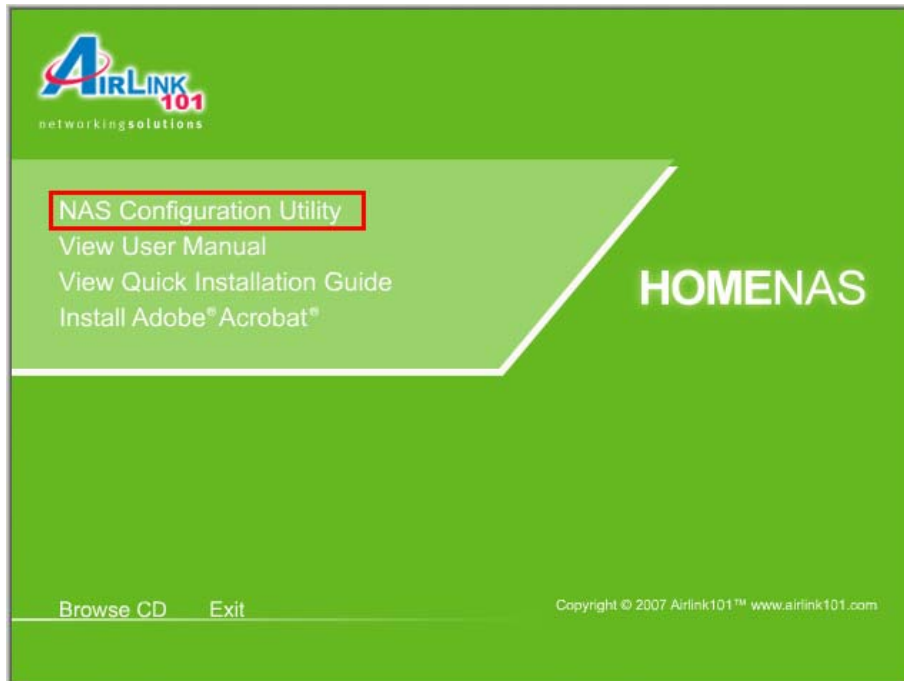


6. Using HOMENAS Configuration Utility (For Windows User Only)

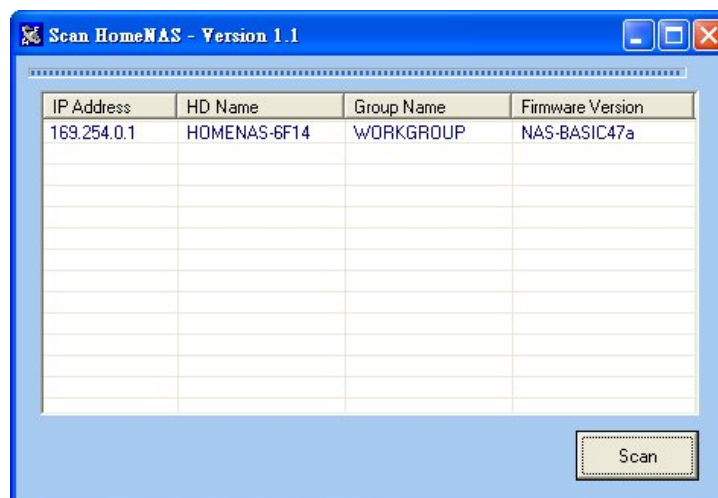
The functions of the utility are similar to the web configuration page. This is an optional tool for users to configure or troubleshoot your HOMENAS, especially when you cannot detect the device or you forget its IP address and hostname.

Step 1 Run Utility

Insert the CD into the CD ROM drive and click **Run NAS Configuration Utility**.

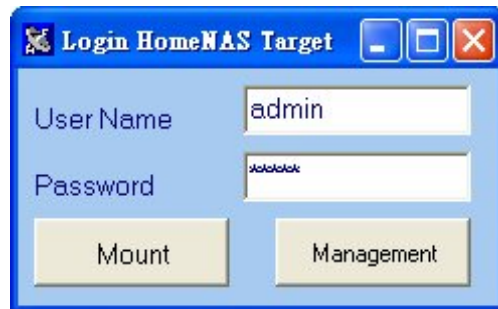


When the utility window pops up, please click “scan” to scan the NAS device.



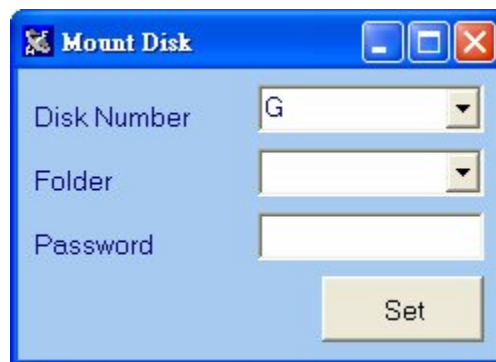
Step 2 Enter the Utility

Choose your HOMENAS system and click to use the utility. Input the user name and password. The default username and password are both "admin". If you forget the the username and password you changed, you will need to reset HomeNas by pushing and holding the reset button at the back panel for 10 seconds



Step 3 Mount the Home Nas

Click on Mount, you will be prompted for the Mount Disk screen. Enter the required information to mount the Home Nas to your computer.



Disk Number: choose disk label you want.

Folder: choose the share folder you want to mount.

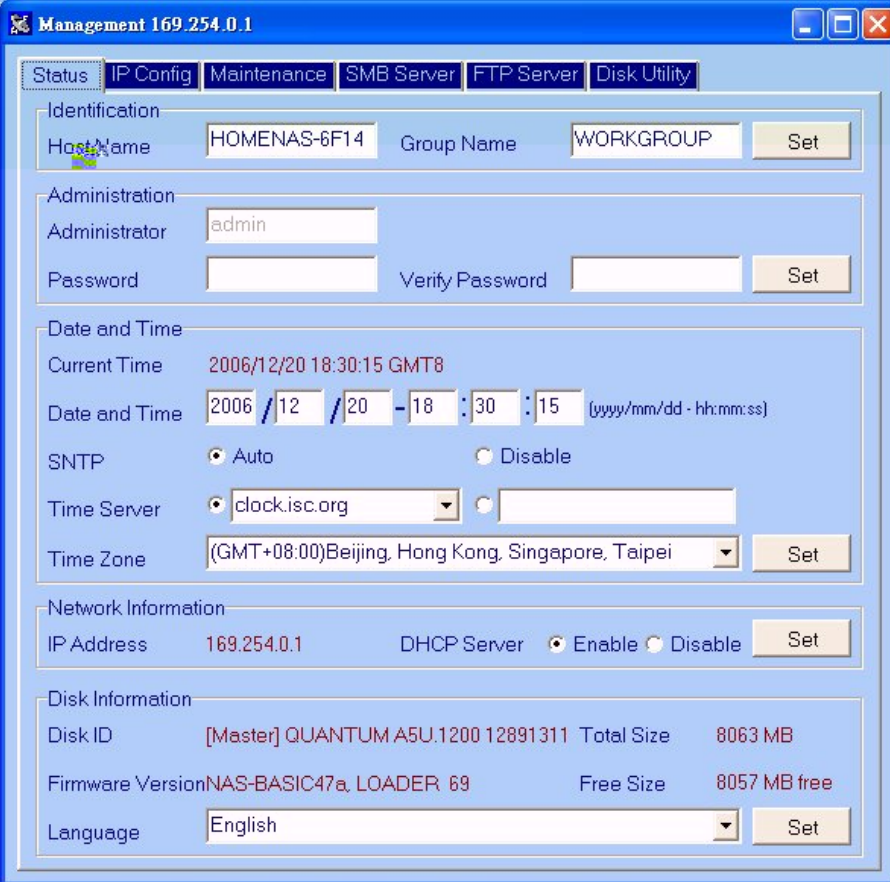
Password: You can set the password for extra security.

Step 4 Configure the Home Nas

Click on **Management**. You will see the following screen.

Status – System Information

The interface is similar to the web configuration page shown in page 9. Please refer to section 3 for detail description.



The screenshot displays the 'Management 169.254.0.1' web interface. The 'Status' tab is selected, and the 'System Information' section is expanded. The interface is organized into several sections:

- Identification:** Host Name: HOMENAS-6F14, Group Name: WORKGROUP. A 'Set' button is present.
- Administration:** Administrator: admin. Password and Verify Password fields are empty. A 'Set' button is present.
- Date and Time:** Current Time: 2006/12/20 18:30:15 GMT8. Date and Time: 2006 / 12 / 20 - 18 : 30 : 15 (yyyy/mm/dd - hh:mm:ss). SNTP: Auto, Disable. Time Server: clock.isc.org, [empty]. Time Zone: (GMT+08:00)Beijing, Hong Kong, Singapore, Taipei. A 'Set' button is present.
- Network Information:** IP Address: 169.254.0.1, DHCP Server: Enable, Disable. A 'Set' button is present.
- Disk Information:** Disk ID: [Master] QUANTUM A5U.1200 12891311, Total Size: 8063 MB. Firmware Version: NAS-BASIC47a, LOADER 69, Free Size: 8057 MB free. Language: English. A 'Set' button is present.

7. Frequently Asked Questions

1. The HOMENAS displays error messages / crashes during the file transmission?

Please ensure you update patches for your operating system frequently. The latest firmware for the HOMENAS is also available to download from our website www.airlink101.com.

2. Does the HOMENAS support power management?

Yes, when there isn't any hard drive activity within fifteen minutes, the HOMENAS will power down to reduce power consumption. The sleep time can be configured via the web control panel.

3. How does the HOMENAS achieve its data sharing capabilities?

Utilizing the SMB (Server Message Block) protocol, the HOMENAS allows any computer client that supports TCP/IP, NetBuei or IPX/SPX to share files. The built-in FTP server also allows any client with network connectivity to access the HOMENAS.

4. What is the size limitation for the HOMENAS?

The HOMENAS supports up to 500GB.

5. Why the HOMENAS only support FAT32 format?

As a cross platform file server, FAT32 format is compatible with all major operating systems (Windows/Mac OS/Linux). Under the LAN mode, a FAT32 format has the single file size limitation of 16 gigabytes.

6. How does the HOMENAS DHCP service work?

The HOMENAS functions as a DHCP (Dynamic Host Configuration Protocol) server when it does not detect the presence of other DHCP servers in its network. DHCP is an Internet protocol for automating the configuration of computers that use TCP/IP by automatically assigning IP addresses.

7. What are the naming limitations of the files located in the HOMENAS?

The maximum length of a folder/directory/file name is 12 characters. Invalid characters such as "*" \ : " < > . ? /" may not be used.

8. What kind of hard drive is compatible with the HOMENAS?

The HOMENAS supports 3.5" Ultra DMA/ATA hard drives which are mostly manufactured after 1998. Below is a list of manufacturer websites you can refer to for more information on the hard drive you own.

• Western Digital	http://www.westerndigital.com
• IBM/Hitachi	http://www.hitachigst.com
• Samsung	http://www.samsung.com
• Seagate	http://www.seagate.com
• Maxtor	http://www.maxtor.com

9. What can I do when HOMENAS is not recognized?

First, make sure the Ethernet cable is properly connected. Power off and then power it back on. If it is still not detectable, you can reset the NAS by pushing and holding the Reset button at the back panel for 10 seconds when it is powered on.

10. What can I do when I forget the hostname and IP address of the HOMENAS?

Use the HomeNAS Configuration Utility included in the CD to show the information for the HomeNAS detected.

Technical Support

E-mail: support@airlink101.com

Toll Free: 1-888-746-3238

Web Site: www.airlink101.com

* Actual data throughput will vary. Network conditions and environmental factors lower actual data throughput rate. Specifications are subject to change without notice.

Copyright © 2007 AirLink101® All rights reserved. AirLink101, the stylized AirLink101 logo, specific product designations, and all other words and logos that are identified as trademarks and/or service marks are, unless noted otherwise, the trademarks and service marks of AirLink101. All other product or service names are the property of their respective holders. AirLink101 products are protected under numerous U.S. and foreign patents and pending applications, mask work rights, and copyrights.

Free Manuals Download Website

<http://myh66.com>

<http://usermanuals.us>

<http://www.somanuals.com>

<http://www.4manuals.cc>

<http://www.manual-lib.com>

<http://www.404manual.com>

<http://www.luxmanual.com>

<http://aubethermostatmanual.com>

Golf course search by state

<http://golfingnear.com>

Email search by domain

<http://emailbydomain.com>

Auto manuals search

<http://auto.somanuals.com>

TV manuals search

<http://tv.somanuals.com>