

COPILLOT® | POCKET PC 5



- ☞ Spoken, Turn-by-Turn Navigation
- ☞ Automatic Route Recalculation
- ☞ Complete U.S. Street Maps
- ☞ Safe & Easy to Use
- ☞ 12-Channel GPS Satellite Receiver
- ☞ Real-Time Tracking and Text Messaging

User's Guide

ALK
ALK Technologies

Contents

Quick Start	i-xii	Navigating Through CoPilot Screens	43
CoPilot Overview	1	Customizing the Guidance Screens	43
Safety Warning	2	Map Modes	44
What's New in Version 5.0?	2	Trip Editing and Waypoints	45
Getting Started	3	Getting ETA's and Distances	45
Getting Started - Hardware	3	Picking Stops From the Map	46
Getting Started - Get Connected	4	Optimizing Stops	46
Uninstalling a Previous Version	5	Detour Feature	47
Installing CoPilot	6	Selective Routing	48
Adding a Data Region.....	9	Tools Menu Options	49
Region Selection	10	Modes Menu	52
Changing the Voice Option At Any Time.....	10	The GPS Menu	53
Software Activation	11	Open and Play GPS Tracks	53
Deactivation and License Update	12	Save Current Location	54
Speech Volume	12	Options in the GPS Menu	55
Data Download To Your Pocket PC	13	Reference: Screens & Toolbars on Your Pocket PC ..	58
Step 1: Specify Where Data Is Stored	13	Trip Planning on Your Pocket PC	63
CoPilot QuickStart	14	Saving and Loading Trip Itineraries	64
Step 2: Choose a Data Selection Method	15	Trip Planning on Your Desktop	65
Step 3: Select Your Data	17	Reference: CoPilot on Your Desktop	74
City Radius	17	CoPilot Live Communications	79
Map Area	19	CoPilot Live Web Page.....	79
Trip	21	Live Mode Overview	80
Step 4: Download the Data	23	Live Mode - Automatic Vehicle Location (AVL)	81
POI Download Options	24	Live Mode - Send/Receive Messages	81
Trip Transfer	24	Live Mode - Send Trip Itinerary Updates	83
Importing Custom Places	25	Driving with Live - Pocket PC Setup	84
Using Your Pocket PC for Guidance	29	Driving with Live - Receive/Respond to Messages ...	87
Address Entry	30	Driving with Live - Receive Trip Itinerary Updates ...	88
Start Driving!	32	About GPS Technology	89
Entering a Home Address	33	Data Corrections	90
Entering a Work Address	33	Trouble-shooting	91
Favorites	34	Using Help Files	92
Finding Points of Interest	35	Software Registration	92
Intersection	37	Technical Support	93
Contact Integration	38	Return Policy	94
Latitude/Longitude	39	License Agreement	95
Saved Trip	40		
Closing CoPilot	40		
Driver Safety/Map/Itinerary Screens	41		



Thank you for purchasing CoPilot! This *Quick Start Guide* details how to get up and running. Here's an overview of the process:

- ✓ Uninstall previous versions of CoPilot.
- ✓ Connect your Pocket PC to your desktop/laptop.
- ✓ Install CoPilot to your desktop and Pocket PC using the Product Key below.
- ✓ On your desktop, create a map data region and download it to your Pocket PC.
- ✓ Activate CoPilot on your Pocket PC.
- ✓ Enter an address and Start Driving!

1. Check the package contents

Your CoPilot package includes the following:

- ◆ Install/Data Discs
- ◆ *Quick Start Guide* and *GPS Receiver Guide*
- ◆ GPS Receiver (not in software-only packages)
- ◆ In-Vehicle Power Adapter (not in software-only packages)
- ◆ Vent Mount (not in software-only packages)

2. Uninstall any previous version

If you have a previous version of CoPilot installed on your Pocket PC and/or desktop computer, you must uninstall it before updating. **Make sure your GPS receiver is NOT attached**, then follow these steps:

(1) On your Pocket PC:

1. Tap the **Start** menu and select *Settings > System > Remove Programs*
2. Select the CoPilot application and tap **Remove**.
3. Select *Pocket Speech* and tap **Remove**.
- 4a. If you stored map data on a storage card:
 - i. Delete the CoPilot folder on the storage card. Tap **Start**, then *Programs > File Explorer > My Device > SD Card*, then tap and hold on the CoPilot folder and select **Delete** from the menu.
- 4b. If you stored map data on your device memory:
 - i. Delete the CoPilot folder on *My Device*. Tap **Start**, then *Programs > File Explorer > My Device*, then tap and hold on the CoPilot folder and select **Delete** from the menu.

(2) On your Desktop/Laptop computer:

1. Select **Start** menu > *Settings > Control Panel*.
2. Double-click **Add/Remove Programs**.
3. Select the CoPilot application and click on the **Remove** button.
4. If asked to confirm the removal of CoPilot and all of its components, select **Yes**.
5. If asked to remove shared files during the uninstall process, select **No To All**.
6. Select **Start** > *Search > Files or Folders* and find the CoPilot folder.
7. Right-click the CoPilot folder and select **Delete**.

3. Install CoPilot

NOTE: Make sure no previous version of CoPilot is installed (see above).

Your desktop/laptop and Pocket PC should both be turned on. The cradle/cable for your mobile device must be connected to your desktop through either a USB or Serial port. Your Pocket PC should be connected to your desktop via ActiveSync. If it is not, see the instructions that came with your Pocket PC.

If you plan to use a Storage Card Reader, it must be installed and connected to your desktop. You can also use a PCMCIA adapter for the Storage Card if you have a laptop

Installation Steps:

Step 1: Insert the CoPilot *Install Disc* into your CD-ROM drive. Enter your **Product Key Code** when prompted (you can find it on the cover of your printed *Quick Start*). Click **Next** and follow the Installation Wizard's on-screen instructions.

When prompted, make sure **Pocket PC Installation** and **Desktop Installation** are checked on the installation menu.

When prompted, choose a **voice option**. Text-to-speech provides more detailed voice instructions, including road names. Pre-recorded sound files are louder and crisper, but provide less detailed driving instructions. The pre-recorded option saves space on your Pocket PC.

As CoPilot prepares to install to your mobile device, you will be asked if the default location (the device's main memory) is where you want the application to be placed. **Recommended Option:** To install to a storage card, click **No**, then choose **Storage card** from the drop-down pick list. (To install to main memory, click **Yes**.)

Step 2: When CoPilot has been installed to your Pocket PC (this will take a few minutes), you will be prompted to begin the desktop/laptop installation. Click **Next** and follow the on-screen instructions.

Step 3: When the installation is complete, a CoPilot icon will appear on your desktop. See Step 5, *Activate the software*, for software activation. Navman GPS Jacket users: also see p. xi.

4. Download map data

NOTE: CoPilot won't open on your Pocket PC unless map data has been downloaded first.

(1) Choose a Storage Location:



1. Open the CoPilot application on your desktop/laptop, then click the **Data Download Wizard** icon in the sidebar on the left. Make sure your Pocket PC is synchronized.

2. Choose where you would like data stored on the Pocket PC. CoPilot will scan your computer to detect which options are available. If you choose an option other than the device memory,

click the pick list that appears and select a storage card name or the drive letter of your storage card reader. Click **Next**.

NOTE: If data is stored on the device's memory and also on a Storage Card in the device, CoPilot will use the Storage Card by default. To have it use map data on device memory, you must remove the Storage Card.

(2) Select a Data Area:



Select **City Radius** to create a data region of a specified radius around a city of your choice:

1. In the **City, State or ZIP Code** box, type a City, State (e.g. new york, ny) and press **<Enter>**.
2. Specify the **Distance Around City to Download** (e.g. 60) and press **<Enter>**. Click **Next**.
3. Your selected data region will be displayed. A window will appear showing how much space you have available on your selected destination (see *Choose a Storage Location* above) and how much memory this data region will take up. If necessary, adjust the radius to make sure your data region will fit on your selected destination. Click **Next**.
4. Give your data region a name and click **Next**.
5. You will then be given the option to either select additional map data or download selected areas to your Pocket PC. Click **Download**.

(3) Download the Data:



1. Clicking the **Download** icon will take you to a screen where **Available Area(s)** for download are displayed on the left.
2. To designate an area to include in the download, highlight it and then click on the right arrow button to move it to the **Data Included in This Download** list on the right. To take an area off the list, highlight it and click the left arrow button.
3. After confirming that the area(s) you would like to download are in the Data Included in This Download list, click **Download** to complete the map data download process.

5. Activate the software

You will be asked to activate your new software when you open CoPilot on your Pocket PC. Note that, unlike in previous versions, **desktop activation is no longer required**. You can now open and use CoPilot's desktop trip planning software without activating it.

Keep your Pocket PC connected to your desktop and open CoPilot on your Pocket PC. Follow the steps below to activate on your Pocket PC:

Automatic Activation

If your desktop is connected to the Internet you can automatically activate CoPilot on your Pocket PC as follows:

1. Connect your Pocket PC to your desktop via ActiveSync.
2. Make sure your desktop has an active connection to the Internet
3. On your Pocket PC go to **Start** > *Programs* > *CoPilot*.
4. An activation screen will appear. Follow the on-screen instructions and tap **Next**.
5. In the next screen, enter your e-mail address and tap **Next**. You will see the message "**License activated successfully**" when the process is finished. Tap **Next** to begin using CoPilot.

Manual Activation

1. Connect your Pocket PC to your desktop via ActiveSync.
2. Make sure your desktop has an active connection to the Internet
3. On your Pocket PC go to **Start** > *Programs* > *CoPilot*.
4. An activation screen will appear. Check **Activate Manually** and tap **Next**.
5. The next screen is the Activation Code screen where you'll see your Product Key and License ID. You'll need this information to manually activate CoPilot as follows:
 - a. On your desktop visit ALK's activation web page (<http://activate.alk.com>)
 - i. On the ALK activation page enter your **Product Key**, **License ID** and **e-mail address**, then tap **Submit**. Your Activation Code will appear on-screen and an e-mail that contains your Activation Code will be sent to you.
 - ii. Enter your **Activation Code** in the blank field in the *Activation Code* screen and click **Activate**.

- b. If you do not have internet access you can call, fax or e-mail ALK. Technical support is available to registered users during standard business hours. See *Contact Information*, p. xi.

NOTE: Software activation does NOT register your software, they are two different processes. See *Software Registration*, p. xii.

6. Adjust the speech volume

To hear CoPilot's voice prompts, the volume on your Pocket PC must be turned all the way up. In the Pocket PC **Start** menu, go to **Settings** and tap on **Sounds and Notifications**. Under **System Volume**, move the slide bar all the way to the right. Or use your Pocket PC's keypad when CoPilot is open: tap up until you reach the maximum volume.

7. In-vehicle hardware setup

WARNING: Never leave GPS receiver in closed vehicle that exceeds 140° F. (For complete instructions, see the *GPS Receiver Guide* that came with the product, or tap **Tutorial** in the *Welcome* screen on the Pocket PC.) First turn on your Pocket PC, then make sure that the GPS receiver is attached and powered and your engine is running before using CoPilot.

If you have a CoPilot vent mount and in-vehicle power adapter:

1. With engine running: Attach cable to Pocket PC and insert it into your vehicle's cigarette lighter socket. Make sure it's firmly seated (red light on).
2. Attach vent mount clips to the vent in your vehicle, in a position that will allow you to be comfortable as you view and operate CoPilot.
3. Slide the Pocket PC into the vent mount, and make sure it is turned on.

GPS Receiver Setup:

Open CoPilot and tap the **GPS** button in the *Welcome* screen to set up your GPS receiver. For more details on connecting your GPS receiver, please refer to the printed *GPS Receiver Guide* that came with your CoPilot product. It is particularly helpful for **Bluetooth** receiver setup.

8. Enter an address

NOTE: There is no need to enter a starting point. CoPilot uses GPS positioning to determine your location automatically.

1. In the *Welcome* screen, tap **Going To**.
2. In the *Going To* screen, tap **Add Stop**.
3. In the *Select Stop* screen, tap **Address**.
4. Using the keyboard, enter a ZIP Code and tap **Next**, or start typing the name of a state — as you type, the scroll list will move to that state. Tap it on the list, then tap **Next**.
5. Type a city name or pick one from the list and tap **Next**.
6. Enter a house number if you like (it's optional), then enter a street name. As you type, database matches will appear below. If no exact match is found, highlight one of the possible matches and tap **Next**.



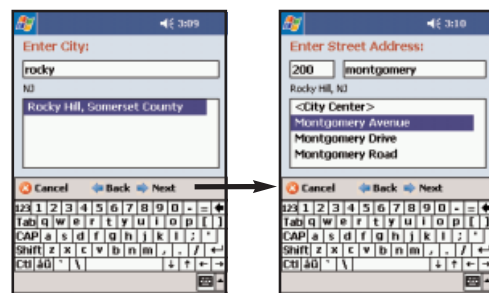
Step 1

Step 2



Step 3

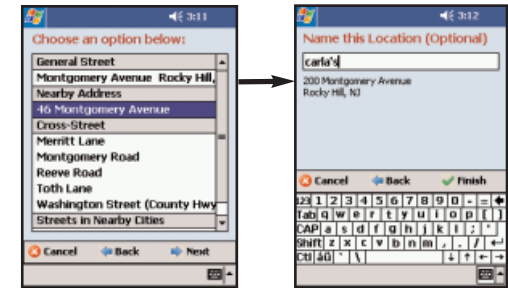
Step 4



Step 5

Step 6

7. If an exact database match was not found, you'll see the available address options. Select a **Nearby Address**, a **Cross Street**, or one of several **Streets in Nearby Cities**. Tap your choice, then tap **Next**.

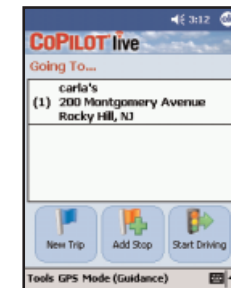


Step 7

Step 8

8. (Optional) Enter a name for the place you entered, then tap **Finish**.

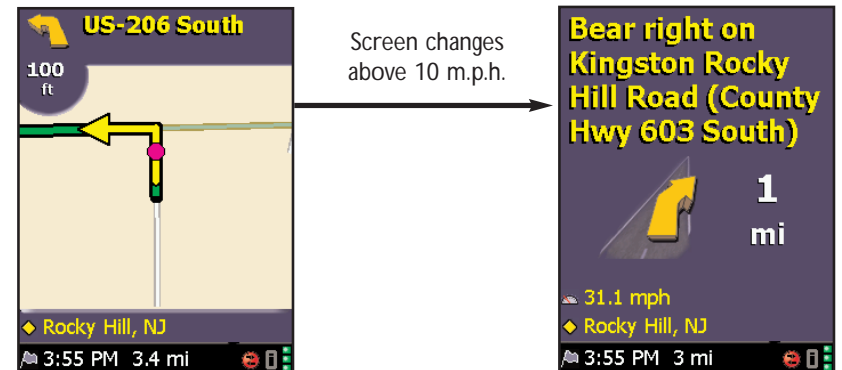
9. You will be taken back to the *Going To* screen, where you can either add another stop or tap **Start Driving** to receive guidance to the destination you entered.



Step 9

9. Start driving!

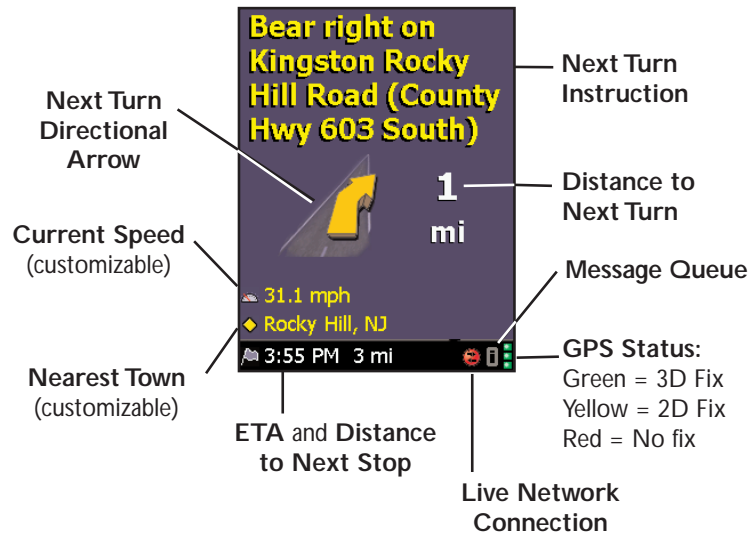
Start driving! A text-only Driver Safety Screen will replace the Map Screen when your road speed exceeds 10 m.p.h. Tap the top or bottom of either screen to see the toolbar and menus.



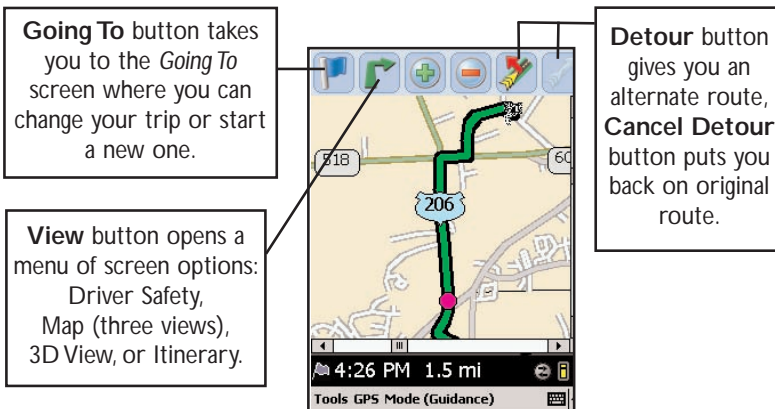
Map Screen

Driver Safety Screen

Pocket PC Guidance Screens Quick Reference

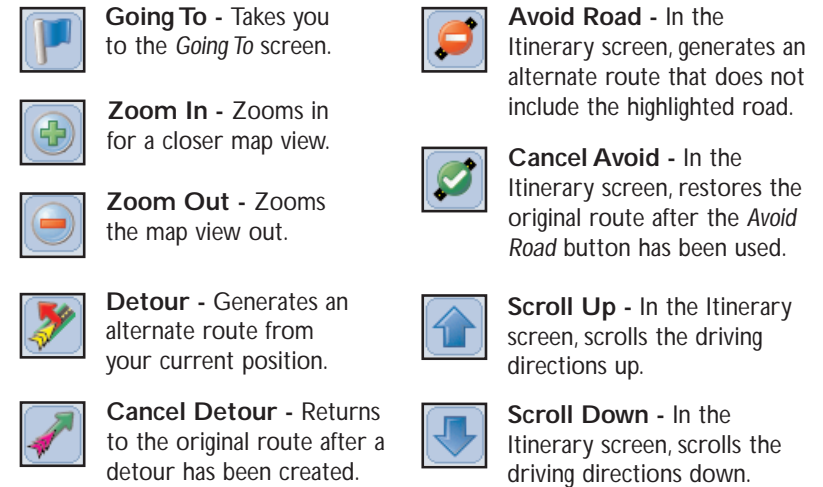


Tap at the top or bottom of the Driver Safety or Map Screen to display the toolbar and menus:

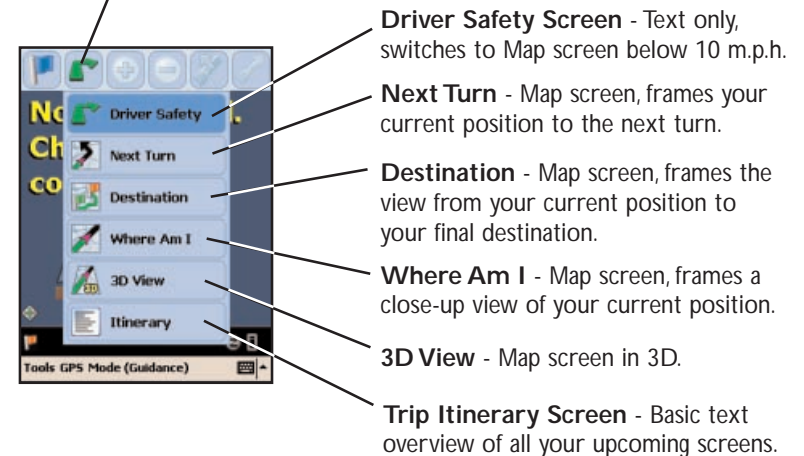


Pocket PC Toolbar Buttons

(Tap top or bottom of Driver Safety or Map screen to see toolbar and menus.)



View: To switch views, tap the **View** button (second from left on the toolbar — its appearance will reflect the current view) and choose a view from the drop-down menu.



User's Guide and Help files

For more detailed instructions, on your desktop go to the Windows **Start** menu > *Programs* > *CoPilot* > *User Manual* to open and print the *CoPilot User's Guide* in .PDF format. Or refer to the CoPilot Help Files in your desktop application (*Help menu* > *Help Contents and Search*) or on your Pocket PC (*Tools menu* > *Help*).

For NavMan GPS Jacket Users

If you are using this software with the NavMan GPS Jacket (the jacket will have the word NAVMAN molded into the back of it and has a conical antenna), you must install drivers for the jacket separately. For the NavMan drivers and installation instructions visit our Support Center on <http://www.alk.com> or follow this direct link to the FAQs:

http://www.alk.com/support/copilotlive_pocketpc5/faqs.asp

The NavMan FAQ is under the **GPS Receiver and Tracking** section.

Contact Information

Technical support is available to registered users during standard business hours — Monday-Friday, 9:00am-5:00pm.

North America - **Web:** www.alk.com, **E-mail:** cpsupport@alk.com,
Fax: 609-252-8166, **Phone:** 888-872-8768

Europe - **Web:** www.alk.eu.com, **E-mail:** uksupport@alk.eu.com,
Postal: Suite 8, 4 Bloomsbury Square, London WC1A 2RP, UK
Phone: +44 (0)207 404 4222

Australia - **Web:** www.travroute.com.au/support.html,
E-mail: support@travroute.com.au, **Phone:** 03-9855-1498

ALK's 30-DAY MONEY BACK GUARANTEE and Return Policy:

We know you'll love our products. If, however, you are not satisfied with any CoPilot product you purchase directly from ALK, you may return it within 30 days for a refund of the price paid (excludes shipping and handling). Complete shipping instructions can be found in the *CoPilot User's Guide* and desktop Help, or go to ALK's web site at www.alk.com.instructions can be found in the *CoPilot User's Guide* and desktop Help, or go to ALK's web site at www.alk.com.

NOTE: This policy does not include additional map data regions or product bundles that include Pocket PCs.

Software Registration

Registered users are entitled to technical support, discounts on new versions of CoPilot, new product information, and software enhancements.

- **North America:** Go to www.alk.com (click "Support Center") or call ALK® Technologies at 609-252-8191 (M-F, 9:00 AM - 5:00 PM EST).
- **Europe:** Go to www.alk.eu.com and click "Support Center".
- **Australia:** Go to www.travroute.com.au and click "Support".

ALK Technologies has a one-per-licensing non-transferable registration. Unauthorized purchases from private owners are not supported or under warranty, and special pricing does not apply.

Important Note, Please Read:

Do not use this product in any way that interferes with safe and attentive operation of a vehicle. The driver must remain alert at all times to actual road conditions and obey all posted signs and traffic regulations. **Always keep your hands on the steering wheel and eyes on the road when driving!** While driving, either ask a passenger to operate CoPilot or pull over to the side of the road when operating CoPilot on your Pocket PC.

CoPilot Overview

Your CoPilot | Pocket PC 5 Includes:

- ◆ Install/Data Discs
- ◆ *Quick Start Guide*
- ◆ *GPS Receiver Guide*
- ◆ GPS Receiver (not in software-only packages)
- ◆ In-Vehicle Power Adapter (not in software-only packages)
- ◆ Vent Mount (not in software-only packages)

Desktop PC Requirements

- ◆ Microsoft Windows 98, 2000, ME, XP, Windows NT® (4.0 or higher) or Windows Mobile 2003
- ◆ 400 MHz processor or better
- ◆ 16X CD-ROM or better
- ◆ 128 MB of RAM and a hard drive with at least 225 MB of available disk space
- ◆ Microsoft ActiveSync version 3.1 or later

Pocket PC Requirements

With Map Data on Storage Card

- ◆ Pocket PC running Pocket PC 2002 or WinMobile 2003 (first or second edition)
- ◆ 5-7 MB of storage RAM
- ◆ 6-15 MB of program RAM (available for running programs)
- ◆ Storage Card recommended (minimum 32MB, 64MB recommended)

Third Party GPS Requirements

- ◆ Standard NMEA GPS receiver* including:
 - ◆ CF GPS receivers
 - ◆ iPAQ GPS Jacket
 - ◆ Cabled GPS receivers
 - ◆ Wireless Bluetooth GPS receivers

* For information on purchasing a GPS receiver from ALK Technologies, go to www.alk.com.

A Safety Warning

Always keep your hands on the steering wheel and eyes on the road when driving!

Do not use this product in any way that interferes with safe and attentive operation of a vehicle. When used in a vehicle, do not place the GPS receiver, antenna, power supply, or your computer where it may strike the driver or passengers if the vehicle turns sharply or stops abruptly. This product is designed, manufactured, and intended as an aid to planning and navigating routes. The accuracy of the map data, driving directions, and GPS tracking system is insufficient for this product to be used for automated navigation or in any situation in which the failure of the product could lead directly to death, personal injury, or physical or environmental damage. The driver must remain alert at all times to actual road conditions and obey all posted signs and traffic regulations.

ALK Technologies assumes no responsibility for any damage or injury resulting from the use of this product.

What's New in Version 5.0?

- ◆ **Redesigned Interface** - The user interface has been redesigned to include step-by-step address entry, more options for entering stops (including Intersection and Latitude/Longitude) and more labels on buttons to better convey their functionality.
- ◆ **3D Map Display** - Provides a realistic view of the road ahead.
- ◆ **Enhanced 2d Map Display** - Combines a larger map display with concise turn instructions. The path ahead is easy to see now with Route Over Highlighting and en-route turn arrows.
- ◆ **Night Mode** - Reduces glare from the Pocket PC and uses low-contrast map colors.
- ◆ **Expanded Voice Options** - Four options are now available: Male and Female Text-to-Speech, Male and Female pre-recorded sound files. Turn instruction warnings at pre-set distance can now be toggled on or off depending on your preference for a detailed vs. concise voice option.
- ◆ **Map Updates** - Map data for all regions has been updated and refined to ensure that addresses can be found and correct routes can be calculated.

Getting Started - Hardware

(For complete instructions, see the *GPS Receiver Guide* that came with the product, or tap **Tutorial** in the *Welcome* screen on your Pocket PC.)

Both your desktop/laptop and your Pocket PC must be turned on. The cradle/cable for your mobile device must be connected to your desktop/laptop computer through either the *USB* or *Serial* port.

If you plan to transfer the map data to your mobile device's main memory, or to a Storage Card in the device, there are no more connections needed.

If you plan to transfer data to a Storage Card through a Storage Card Reader, you must also have the reader installed and connected to your desktop/laptop. You can also use a PCMCIA adapter for your Storage Card if you have a laptop.



In-vehicle Hardware Setup:

WARNING: Never leave GPS receiver in closed vehicle that exceeds 140° F.

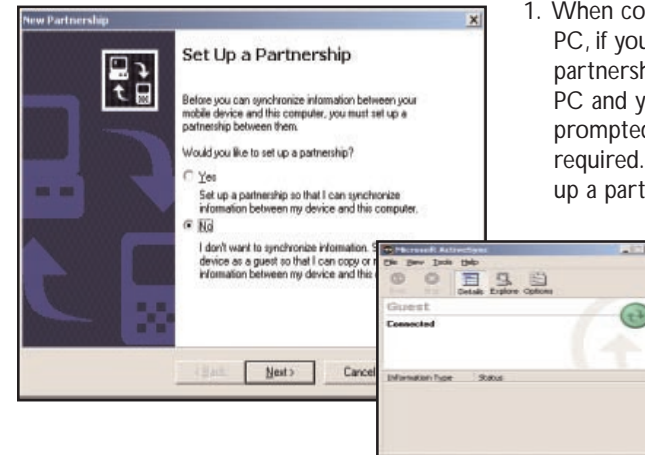
First turn on your Pocket PC, then make sure that the GPS receiver is attached and powered and your engine is running before using CoPilot.

If you have a vent mount and in-vehicle power adapter:

1. **After turning your engine on**, attach the cable to the Pocket PC and insert it into your vehicle's cigarette lighter socket. Make sure it is firmly seated (the red light should be on).
2. Attach the vent mount clips to the vent in your vehicle, in a position that will allow you to be comfortable as you view and operate CoPilot.
3. Slide the Pocket PC into the vent mount, and make sure it is turned on.

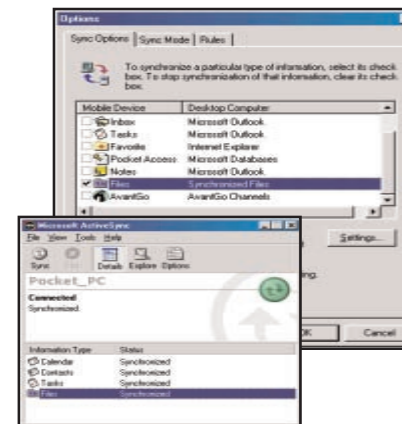
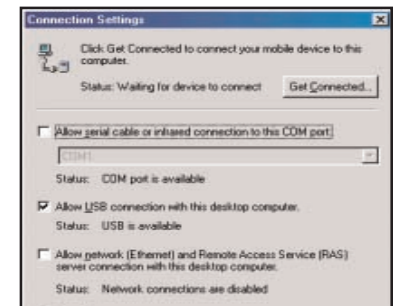
Getting Started - Get Connected

In order to successfully transfer data from your desktop to your Pocket PC, you must have *Microsoft ActiveSync 3.1* (or later) installed. This software is necessary to connect the two machines and is provided by your Pocket PC manufacturer. If you did not receive this software with your mobile device, contact the distributor immediately.



1. When connecting your Pocket PC, if you have not set up a partnership between your Pocket PC and your desktop, you will be prompted to do so. This is not required. If you choose not to set up a partnership select **Guest partnership**, and you will be logged in as a *Guest* and ready to transfer data between machines.

2. If you have set up a partnership in the past, or choose to do so at this point, be sure to allow your Pocket PC to synchronize with your desktop/laptop prior to launching CoPilot.



NOTE: If your desktop/laptop computer does not seem to be recognizing the connection with your Pocket PC, select **Connection Settings...** from the drop-down **File** menu, and make sure you're connected using the appropriate Port. Then click **Get Connected...** in the **File** menu and follow the on-screen instructions.

Uninstalling a Previous Version

If you have been using an earlier version of Pocket CoPilot, you must uninstall the application and its data before installing CoPilot. If you're uninstalling CoPilot from a Pocket device and installing the same version on another device, you must deactivate the software on the first device before installing it again — see p. 12.

NOTE: When uninstalling CoPilot, your GPS receiver cannot be attached. Before uninstalling, you must disconnect the receiver and perform a soft restart. Then follow the steps outlined below:

(1) On your Pocket PC:

1. Tap the **Start** menu and select *Settings>System>Remove Programs*
2. Select the CoPilot application and tap **Remove**.
3. Select *Pocket Speech* and tap **Remove**.
- 4a. If you stored map data on a storage card:
 - i. Delete the CoPilot folder on the storage card. Tap **Start**, then *Programs > File Explorer > My Device > SD Card*, then tap and hold on the CoPilot folder and select **Delete** from the menu.
- 4b. If you stored map data on your device memory:
 - i. Delete the CoPilot folder on *My Device*. Tap **Start**, then *Programs > File Explorer > My Device*, then tap and hold on CoPilot and select **Delete** from the menu.

(2) On your Desktop/Laptop computer:

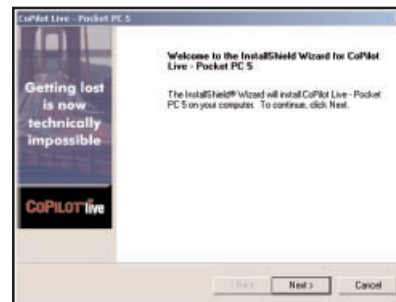
1. Select **Start** menu > *Settings > Control Panel*.
2. Double-click **Add/Remove Programs**.
3. Select the CoPilot application and click on the **Remove** button.
4. If asked to confirm the removal of CoPilot and all of its components, select **Yes**.
5. If asked to remove shared files during the uninstall process, select **No To All**.
6. Select **Start > Search > Files or Folders and find the CoPilot folder.**
7. Right-click the CoPilot folder and select **Delete**.

Installing CoPilot

NOTE: You must uninstall any previous version of CoPilot from your desktop/laptop and Pocket PC before proceeding (see above).

To install CoPilot, first turn on your computer and set up your Pocket PC. **Do NOT attach the GPS receiver yet, the application should not be installed with the GPS receiver attached.** Your Pocket PC should be connected via ActiveSync, as described on p. 4.

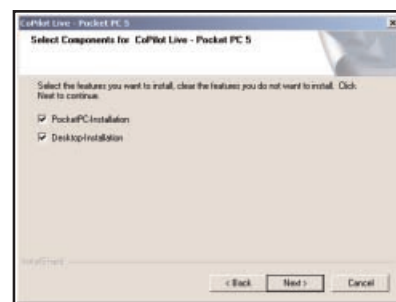
Follow the steps below to install:



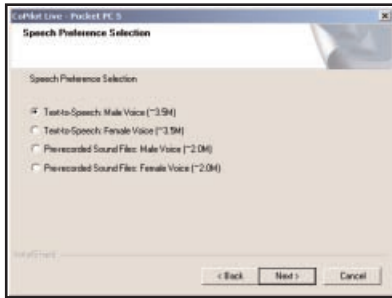
1. Insert the CoPilot **Install Disc** in your CD-ROM drive. Have your **Product Key Code** ready (you can find it on your printed *Quick Start*). Click **Next** in the Welcome screen and follow the Installation Wizard's on-screen instructions.



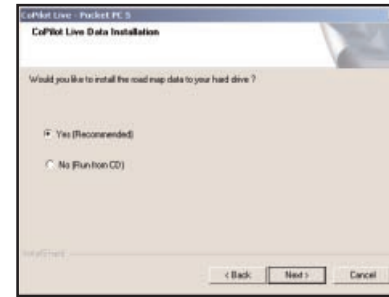
2. Enter your Product Key Code when prompted, then click **Next**.



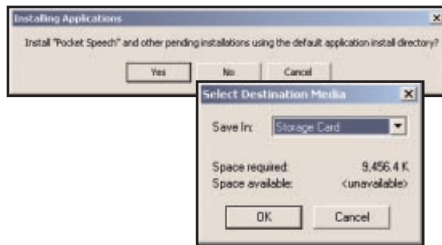
3. After accepting the License Agreement, make sure there are check marks next to **Pocket PC Installation** and **Desktop Installation** in the Installation menu screen. Click **Next**.



4. The Installation Wizard will then start installing to your Pocket PC, beginning with the text-to-speech software that delivers CoPilot's spoken driving instructions. You'll be prompted to choose a **voice option**. Text-to-speech provides more detailed voice instructions, including road names. Pre-recorded sound files are louder and crisper, but provide less detailed driving instructions. The pre-recorded option saves space on your Pocket PC. Click **Next** to continue.



8. As the desktop installation proceeds, you will be given the choice to install the **CoPilot map data** to your hard drive. **This is the recommended option** and requires **700 MB** of available space. If you choose **None**, you will need to insert the CoPilot Data Disc each time you download data to your Pocket PC or use CoPilot for trip planning on your desktop.



5. Next, you will be prompted to choose an installation location on the Pocket PC. **RECOMMENDED:** To install to a storage card, click **No**, then choose **Storage card** from the drop-down pick list. (To install to your Pocket PC's main memory, click **Yes**.)



9. When the installation is complete, a **CoPilot** icon will appear on your desktop or laptop. You are now ready to start using CoPilot! For software activation, see p. 11.



6. The installation to your Pocket PC will take a few minutes. Check your Pocket PC screen to determine when the installation is complete.
7. When CoPilot has been installed to your Pocket PC, you will be prompted to begin the desktop/laptop installation. Click **Next** and follow the on-screen instructions.

For NavMan GPS Jacket Users

If you are using this software with the NavMan GPS Jacket (the jacket will have the word NAVMAN molded into the back of it and has a conical antenna), you must also install drivers for the jacket separately.

For the NavMan drivers and installation instructions visit our Support Center on <http://www.alk.com> or follow this direct link to the FAQs:

http://www.alk.com/support/copilotlive_pocketpc5/faqs.asp

The NavMan FAQ is under the **GPS Receiver and Tracking** section.

Adding a Data Region

If you have purchased an additional data region after your initial purchase of CoPilot, you will need to modify the original ("Base") installation and activate the new region.

IMPORTANT: You can only use your Expansion Product Key AFTER you have installed CoPilot with a Base Product Key. If you have not yet installed CoPilot, please do so first and then follow the instructions below. The Base Product Key can be found on the printed *Quick Start Guide* that comes with CoPilot.

ON YOUR DESKTOP/LAPTOP:

1. Insert your CoPilot **Install Disc** into your CD-ROM drive.
2. Select **Modify** and click **Next** when the InstallShield Wizard appears.
3. Enter your Expansion Product Key when prompted to enter a **Product Key**.
4. Follow the on-screen instructions.
5. The Activation Wizard will appear at the end of installation. Activation occurs just as it did when you originally installed CoPilot.

ON YOUR POCKET PC:

IMPORTANT: You must install CoPilot to your Pocket PC using your Base Product Key AND you must have data downloaded to your Pocket PC before using your Expansion Product Key.

1. Open CoPilot on your Pocket PC.
2. If your GPS receiver is attached, CoPilot will ask you to confirm your destination or to enter a new one. Enter any destination to proceed. If your GPS receiver is not attached, go to Step 3.
3. Tap **Tools > Upgrade License** from the menu on the bottom of the screen.
4. Enter your Expansion Product Key (found in your order confirmation e-mail) when prompted to enter a **Product Key**.
5. Follow the on-screen instructions.
6. Activation occurs just as it did when you originally installed CoPilot.

If you have any questions, please visit our Support Center at www.alk.eu.com or send an e-mail to support@alk.com.

Region Selection

If you purchased an additional data region, when downloading map data to your Pocket PC you will need to make sure the proper region is active. To do this, on your desktop in Planning mode click the **Map** menu > **Region** > and check the desired region.

Changing the Voice Option at Any Time

CoPilot offers the following voice options:

- ◆ **Male Text-to-Speech**
- ◆ **Female Text-to-Speech**
- ◆ **Male Pre-Recorded Sound Files**
- ◆ **Female Pre-Recorded Sound Files**

To change the voice option:

1. Connect your Pocket PC to your PC via Activesync.
2. Insert the **Install Disc** into your CD-ROM drive.
3. Select **Modify** from the InstallShield menu and click **Next**.
4. Enter your **Product Key** (see the front of the printed *Quick Start* that came with the product) and click **Next**.
5. Make sure that **ONLY PocketPC-Installation** is checked and click **Next**.
6. Select your voice option and click **Next**.
7. Click **Yes** to reinstall Pocket Speech.
8. Click **No** to reinstall CoPilot.
9. Click **Yes** to install in the default directory if that's where you originally installed. If you installed CoPilot elsewhere, click **No** and choose the appropriate location.
10. Tap **Ok** on your Pocket PC to reinstall.
11. Tap **Yes to All** if prompted.
12. Click **Ok** on your desktop, then click Finish to complete the process.

Software Activation

You will be asked to activate your new software when you open CoPilot on your Pocket PC. Note that, unlike in previous versions, **desktop activation is no longer required**. You can now open and use CoPilot's desktop trip planning software without activating it.

Keep your Pocket PC connected to your desktop and open CoPilot on your Pocket PC. Follow the steps below to activate on your Pocket PC:

Automatic Activation

If your desktop is connected to the Internet

1. Connect your Pocket PC to your desktop via ActiveSync.
2. On your Pocket PC go to **Start** > *Programs* > *CoPilot*.
3. An activation screen will appear. Follow the on-screen instructions and click **Next**.
4. In the next screen, enter your e-mail address and click **Next**. You will see the message "**License activated successfully**" when the process is finished. Click **Next** to begin using CoPilot.

Manual Activation

1. Connect your Pocket PC to your desktop via ActiveSync.
2. Make sure your desktop has an active connection to the Internet
3. On your Pocket PC go to **Start** > *Programs* > *CoPilot*.
4. An activation screen will appear. Check **Activate Manually** and tap **Next**.
5. The next screen is the *Activation Code* screen where you'll see your Product Key and License ID. You'll need this information to manually activate CoPilot as follows:
 - a. On your desktop visit ALK's activation web page (<http://activate.alk.com>)
 - i. On the ALK activation page enter your **Product Key, License ID** and **e-mail address**, then click **Submit**. Your Activation Code will appear on-screen and an e-mail that contains your Activation Code will be sent to you.
 - ii. Enter your **Activation Code** in the blank field in the *Activation Code* screen and click **Activate**.
 - b. If you do not have internet access you can call, fax or e-mail ALK. Technical support is available to registered users during standard business hours. See *Technical Support*, p. 93.

NOTE: Software activation does NOT register your software, they are two different processes. See *Software Registration*, p. 92.

Deactivation and License Update



If you're planning to uninstall CoPilot from one Pocket device and install the same version on another device, you need to deactivate the software on the first device before installing it again. To do this, open CoPilot on your Pocket PC. If you can't see the menus and toolbar, tap at the top or bottom of the screen. Tap the **Tools** menu, select **Update License**, then tap **Deactivate** in the License Manager. Your Pocket PC must be synchronized for the deactivation process to take effect. When you re-install CoPilot on another device, you will be asked to activate it again.

Speech Volume

To hear CoPilot's voice prompts, the volume on your Pocket PC must be turned all the way up. In the Pocket PC **Start** menu, go to **Settings** and tap on **Sounds and Notifications**. Under **System Volume**, move the slide bar all the way to the right. Or use your Pocket PC's keypad when CoPilot is open: tap up until you reach the maximum volume.

If you installed the TTS (text to speech) voice option, you may also want to make sure the "**Amplify Speech Volume**" option is on — tap the **Tools** menu (if you don't see it, tap at the top or bottom of the screen), select **Options**, and tap the **Guidance** tab. This option should be checked.

Data Download to Your Pocket PC

To use CoPilot on your Pocket PC, you first need to download map data from your desktop or laptop computer to your Pocket device. You select the data to download from one or more regions ("data areas") that you specify in the CoPilot application on your desktop. It's a simple 4-step process.

Step 1: Specify Where Data Will Be Stored

To begin the data download process, open the CoPilot application on your desktop/laptop, then click the Data Download Wizard icon or pick **Data Download Wizard** from the **File** menu.

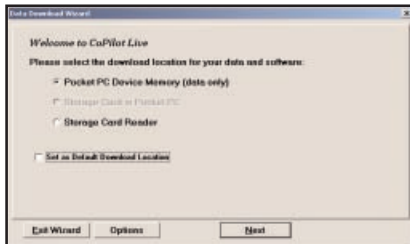


CoPilot gives you three options for downloading data:

- 1) directly to the Pocket device's memory,
- 2) to a Storage Card in the device, or
- 3) to a Storage Card through a Storage Card Reader.

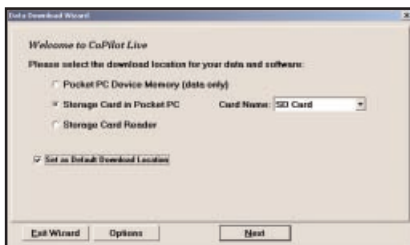
You will be prompted to enter one of these choices before you can download. CoPilot will detect which options are available to you.

NOTE: If there is data stored on the device's memory and also on a Storage Card in the device, CoPilot will use the map data on the Storage Card by default. To have it use the device's memory, you must remove the Storage Card.



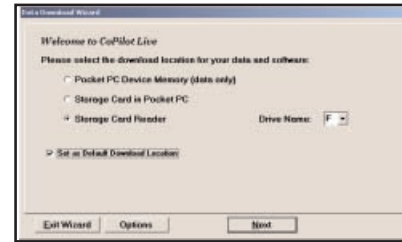
1. To download to Pocket PC Device Memory:

(In this example, CoPilot has detected that there is no Storage Card in the device.) Click **Next** to go to the *Data Selection* window. See *CoPilot QuickStart*, p. 14, for a description of software included in downloads. See p. 24 for **Options**.



2. To download to a Storage Card in the device:

(In this example, CoPilot has detected that all options are available.) Select a storage card name from the drop-down pick list, then click **Next** to go to the *Data Selection* window. See *CoPilot QuickStart*, p. 14, for a description of software included in downloads. See p. 24 for **Options**.



3. **To download to a Storage Card through a Card Reader:** (In this example, again all options are available.) Pick the drive letter associated with your Storage Card Reader, then click **Next** to go to the *Data Selection* window. See *CoPilot QuickStart* below for a description of software included in downloads. See p. 24 for **Options**.

NOTE: You can also download to a Storage Card through a PCMCIA adapter. Simply identify the drive letter associated with the adapter under the Storage Card Reader option.

CoPilot QuickStart Storage Card Application Download

If you are downloading map data to a Storage Card or Storage Card Reader, you have the option to download a complete, ready-to-use "QuickStart" version of CoPilot along with the data. Having the QuickStart version on your Storage Card ensures that CoPilot will be available even if you experience technical problems with your Pocket PC and need to perform a hard reset. (During a hard reset, all installed applications are deleted from the Pocket PC.) **Inserting a storage card with the QuickStart version on it will automatically install CoPilot, and your map data will already be there!**

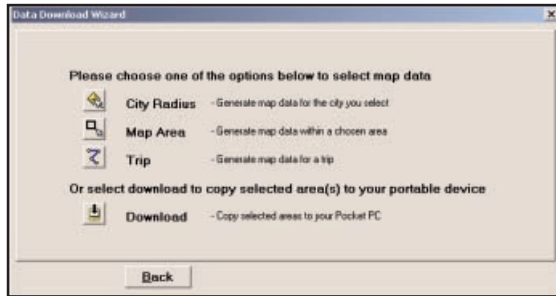
The QuickStart option can be turned on or off in the final step of the download process (see p. 23). **By default this option is active and the QuickStart download will be executed each time you download map data.**

The QuickStart needs **10 MB** of space on your Storage Card. Once the QuickStart has been copied, you can save time the next time you download data by unchecking the **Create QuickStart** option in the final Data Download Wizard screen before proceeding to download. You will also want to uncheck this option if you do not have enough room on your Storage Card for it.

If the QuickStart is copied onto your Storage Card and you need to remove it, simply delete the folder that contains it. The folder will be named "2577".

Data Download

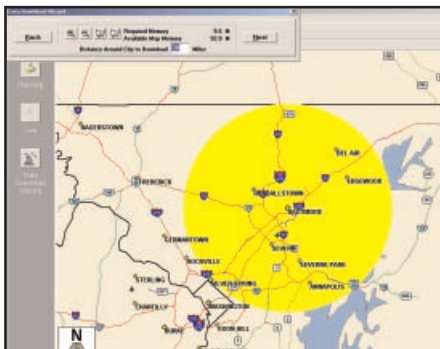
Step 2: Choose a Data Selection Method



After you specify a location where the data will be stored, you will be prompted to select a region on the map to download. CoPilot allows you to download data using one of the three methods described below.

See *Data Download Step 3* beginning on p. 17 for step-by-step instructions for downloading data to your Pocket PC using each of these three methods.

City Radius - This method allows you to quickly select data in the shape of a circle surrounding any city on the map. In the Data Download Wizard you type a city name and state abbreviation or ZIP code and enter the number of miles you would like the radius to extend around the city, then click **Next**.

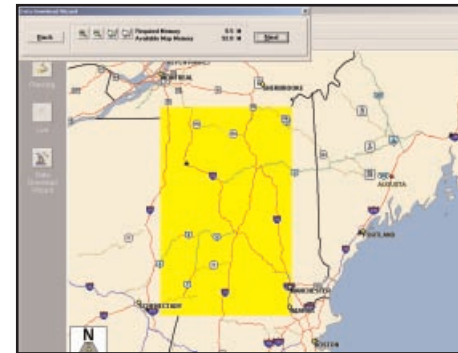


City Radius

The Wizard displays a map that shows the city and the radius you chose. At this point you can zoom the map in and out using zoom buttons and adjust the size of the data area by altering the radius of the circle.

Map Area - This method of selecting data allows you to choose an area of data by drawing a box on the Data Download Wizard's map screen.

In the Wizard, you enter a city name near which you would like to select data, then click **Next**. The map will zoom to that



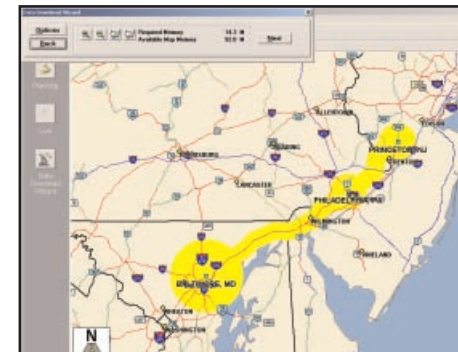
Map Area

location. Then you create a box around the desired area by clicking and dragging your mouse across the map. The street-level data within that box will be selected.

You can zoom the map in and out using the zoom buttons and adjust the size of the data area by redrawing the box.

Trip - The Trip method of selecting data is by far the most customizable method. This option allows you to run a trip and select street-level data specific to that trip, thereby avoiding unneeded data and saving valuable memory space.

Once the trip is run, the Data Download Wizard automatically selects circles of data around your origin and destination, and a corridor of data along your route. You can then click **Options** to adjust the radius of the circles and the width of the corridor.



Trip

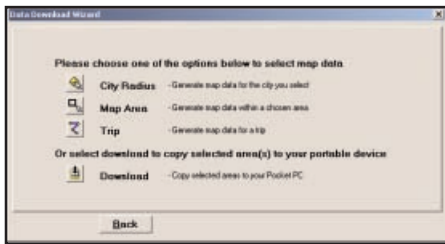
The Trip Itinerary for each trip you download will be stored on your Pocket PC (see *Trip Transfer*, p. 24). Multiple trips can be downloaded to the Pocket PC for later use.

Data Download

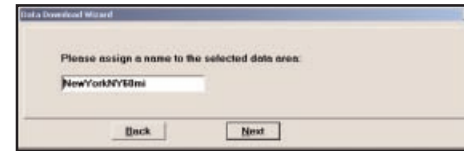
Step 3: Select Your Data

Use any of the three methods covered on the following pages (**City Radius**, **Map Area**, or **Trip**) to select one or more regions and then download your data.

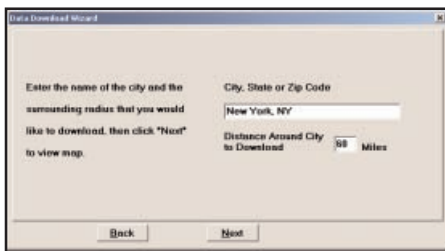
City Radius



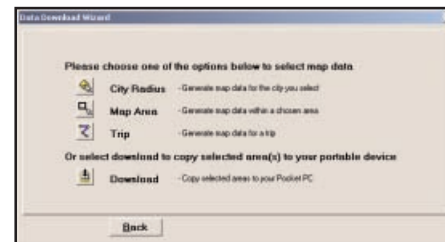
1. Click the **City Radius** icon.



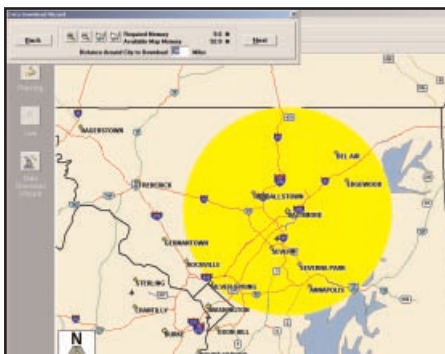
4. Name the selection, then click **Next**.



2. Enter a **City, State or ZIP code**, and a **mile radius** around the area that you would like to download. Click **Next** to verify that the area is correct.



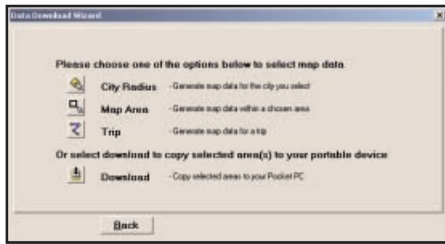
5. You will return to the *Data Selection* menu where you can select another data area if you like, using any method. When you finish selecting data areas, click the **Download** icon and you will be taken to the final screen where you can build your download.



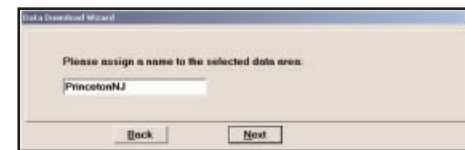
3. Using the Data Download Wizard toolbar you can zoom in or out, change the radius, or go back to the previous screen. When you are satisfied with your selection, click **Next**.

Note: CoPilot's available memory calculations subtract 15 MB from the available memory on your storage card (if you are using one) to account for support files.

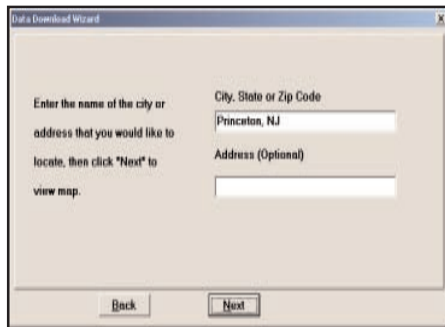
Map Area



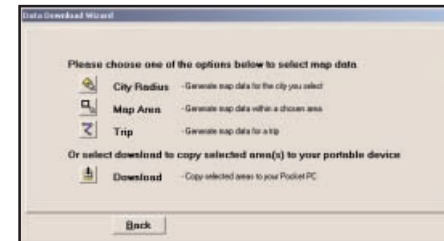
1. Click the **Map Area** icon.



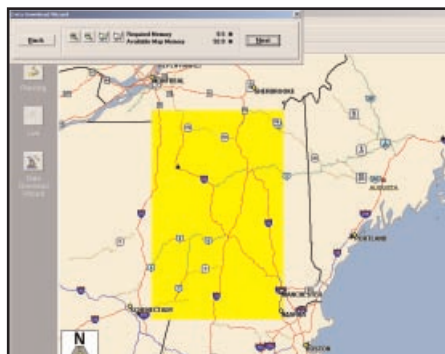
4. Name the selection, then click **Next**.



2. Enter a **City, State or ZIP code** (address optional) within the area that you would like to download. Click **Next**.



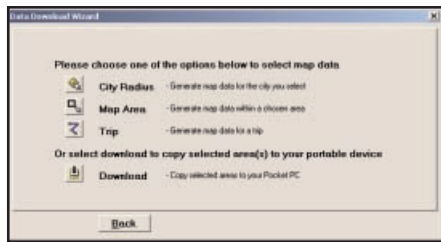
5. You will return to the *Data Selection* menu where you can select another data area if you like, using any method. When you are finished selecting data areas, click the **Download** icon to go to the final screen where you can build your download.



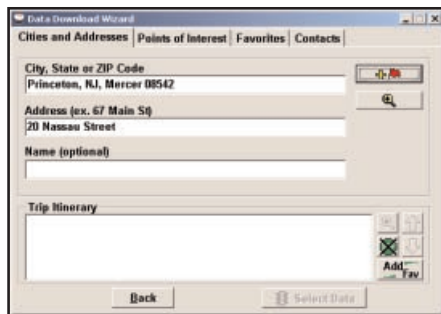
3. **Click and hold the left mouse button and drag the cursor** to draw a box around a desired area. The size of the area will be displayed in the toolbar. Click **Next**.

Note: CoPilot's available memory calculations subtract 15 MB from the available memory on your storage card (if you are using one) to account for support files.

Trip



1. Click the **Trip** icon.



2. You now have three options for entering stops on your trip. If you choose the *Cities and Addresses* tab you will need to enter a **City, State or ZIP code**, press <Enter>, and click the **Add Stop** button.

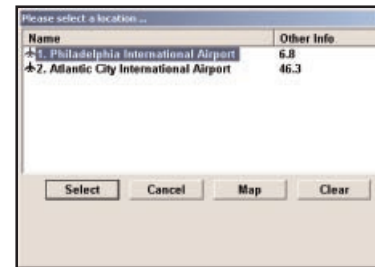
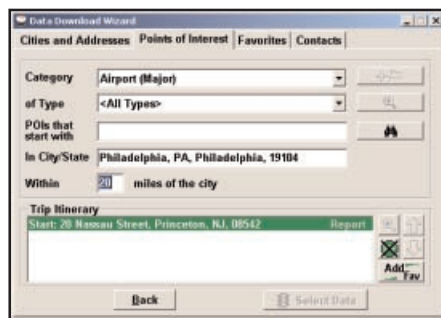


You may enter one or multiple destinations. Use the buttons to the right of the *Itinerary* to zoom to a stop on the map, change the order of stops, or delete a stop.

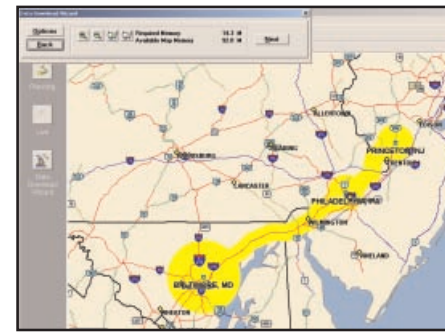
3. If you choose the *Points of Interest* tab, enter a **City, State** or a ZIP Code and click the **Find** button.



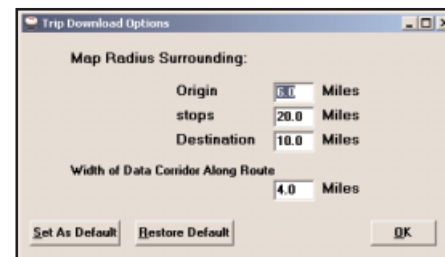
You can specify search parameters by selecting a POI **Category** and/or **Type** (this will speed up the search).



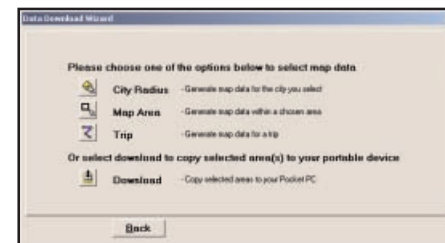
- 3a. Highlight a selection, click **Select**, then **Add Stop**. When all your stops have been entered, click **Select Data**.



4. By default a 20 mile radius around all stops and a width of 4 miles along the corridor which connects them will be highlighted. **Note:** CoPilot's available memory calculations subtract 15 MB from the available memory on your storage card (If you are using one) to account for support files.



5. To customize these distances for any trip, click **Options** and type a distance in the appropriate box.



6. You will return to the *Data Selection* menu where you can select another data area if you like, using any method. When you are finished selecting data areas, click **Download**. Trip itineraries that were created using the *Trip* download method will be transferred along with map data (see p. 24 for details).

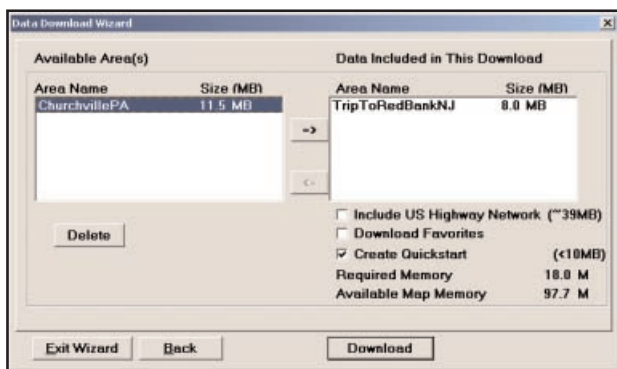
Data Download

Step 4: Download the Data

When you're ready to execute a download, the Wizard will display a list of **Available Area(s)** for download on the left side of the window. To designate an area to include in the download, click on it and then click on the right arrow button to move it to the **Data Included in This Download** list.

Notice that the amount of available map memory and the memory required for all the areas on the Included list is shown under the list. **NOTE:** CoPilot's available memory calculations subtract 15 MB from the available memory on your storage card (if you are using one) to account for support files.

If you need to move an area off the Included list, click on it and use the left arrow button. To delete an area from memory, click on it and click **Delete**.



IMPORTANT: Each data download overwrites the data that is already on your Pocket PC. If any data areas are already loaded on your Pocket PC, they will be overwritten by the new download. Therefore, your download must include all areas that you wish to have available on your Pocket PC.

Check **Include US Highway Network** to download CoPilot's complete US Highway Network along with your data. This additional download requires approximately 36 MB of space on your Pocket PC. When this network is loaded, major roads, cities, and some points of interest outside your selected data region will be shown on the map and you'll be able to receive guidance as you drive anywhere in the United States.

Check **Download Favorites** to download your Favorites list from the Trip Planner window on your desktop along with map data. These addresses will then be available as Favorites for trip entry on the Pocket PC.

RECOMMENDED OPTION: It is recommended that you leave **Create QuickStart** checked (see p. 14 for a description of this feature). However, you may uncheck it if you don't want the QuickStart copied with your download.

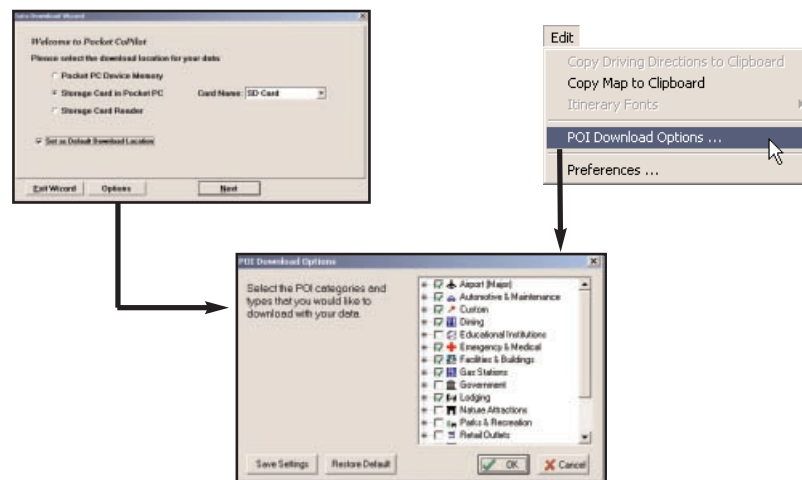
POI Download Options

When you download a data region, you'll get all roads within that region (but not roads outside the region). Also included with each download are regional points of interest (POI) such as gas stations, hotels, restaurants, visitor attractions, etc.

CoPilot now lets you control the number and types of points of interest that get downloaded along with your data areas. You can save space on your Pocket PC by eliminating categories of POI that you're not interested in seeing.

To select which POI categories you want, choose **POI Download Options** from the **Edit** menu in the desktop application or, when you first open the Data Download Wizard, click the **Options** button in the Wizard. In the window that opens, check the categories you wish to select. Click the plus sign next to each category to see the included sub-categories.

Click **Save Settings** to save the set of categories you create. Click **Restore Default** to return to CoPilot's default categories.



Trip Transfer

CoPilot now transfers whole trips to your Pocket PC when you use the **Trip** option for data downloading. Any trip you create for download, including its Itinerary, is transferred along with the surrounding data corridor and will become the current trip on your Pocket PC.

The **Trip** download option creates a .TRP file that is placed in the Save directory in the CoPilot installation folder on your Pocket PC. Subsequent downloads will add more .TRP files to this folder. The number of trips that may be stored is limited only by the available memory on your Pocket PC. If multiple trips are downloaded, the last one to be added will open as the current trip. Use the **Saved Trip** stop entry option on your Pocket PC to open stored .TRP files.

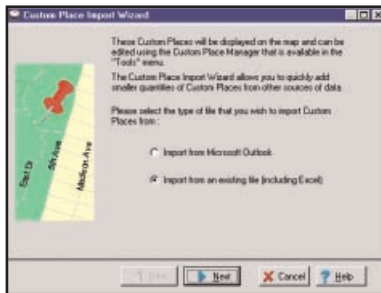
Importing Custom Places

CoPilot's Custom Place Import Wizard enables you to import addresses from your Outlook Contacts database, an Excel file, or text file. (If you are using another type of database or contact manager, you can export your contacts/locations to an Excel or text file before importing them into CoPilot.) These points are then added to CoPilot's POI database in a category and type of your choice (the default category is "Custom"). Once they are in the database, they are displayed on maps as pushpins and included in search results when you search for points of interest on your Pocket PC or in the Trip Planner window on your desktop/laptop.

NOTE: CoPilot now allows importing of multiple POIs with the same name (e.g. an entire database of "Starbucks").

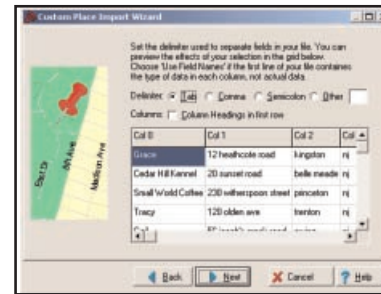
To access the Wizard, choose **Import Custom Places** from the **Tools** menu in Planning Mode on the desktop, then follow the step-by-step instructions given by the Wizard.

Steps for Importing:

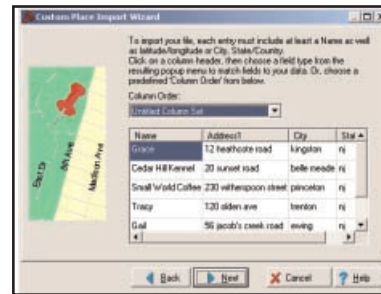


1. In Planning Mode on your desktop/laptop, choose **Import Custom Places** from the **Tools** menu to open the Import Custom Places Wizard.

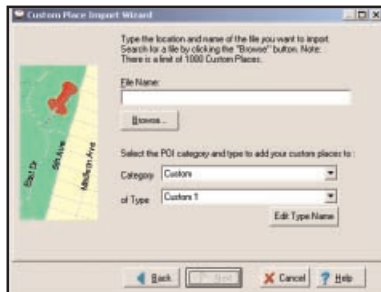
2. Choose **Import from Microsoft Outlook** or **Import from an existing file** (this can be a .txt text file or an Excel file). Click **Next**.



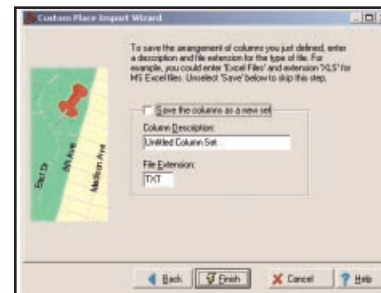
4. In the next screen you'll see the data from your file sorted into columns. If the columns you see in the screen have not sorted the address data correctly, you need to indicate which delimiter CoPilot should recognize when it separates the fields in your file into columns. Each field — e.g. name, street address, city, state, etc. — needs to be separated by a delimiter such as a tab, semicolon, or comma. If your file uses a delimiter other than a comma, tab, or semicolon, click **Other** and type the delimiter in the box to the right. If the first row of your file consists of column headings, you should check **Column headings in first row**. Click **Next** when ready.



5. Now, following the instructions on the screen, click each column heading and match the column headings with your data. To be accepted by CoPilot, each imported place must have at least four fields: **Name**, **Address1**, **City**, and **State**. Click **Next** when ready.

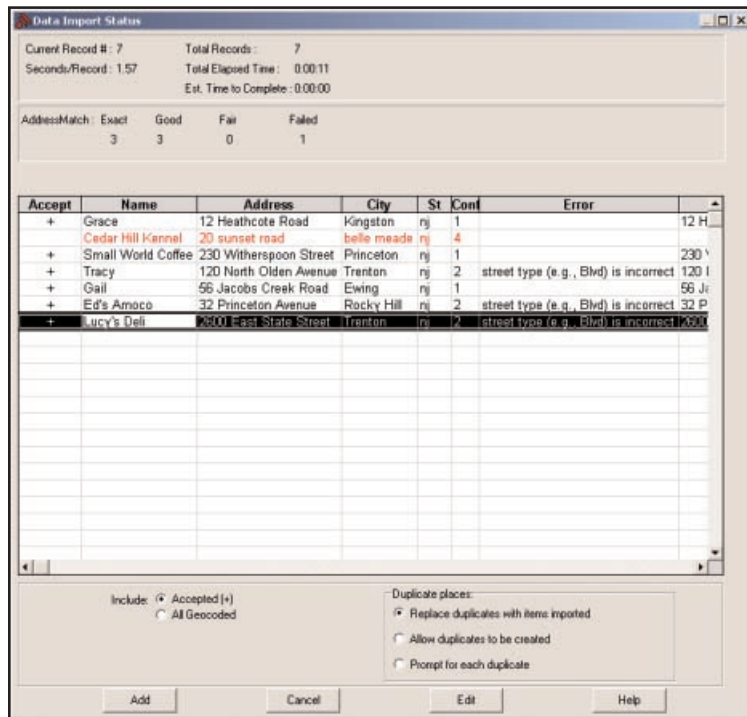


3. In the next Wizard screen, type the path to the file you want to import or **Browse** for it, and use the **Category** pick list to indicate a POI category for your imported places (by default they are assigned to "Custom"). You can also choose a **Type** from the pick list. To edit the type name, highlight it on the pick list and click **Edit Type Name** below. Click **Next** when ready.



6. In the next screen, following the instructions, you can assign a name to the set of columns you just defined to save you time the next time you import addresses.

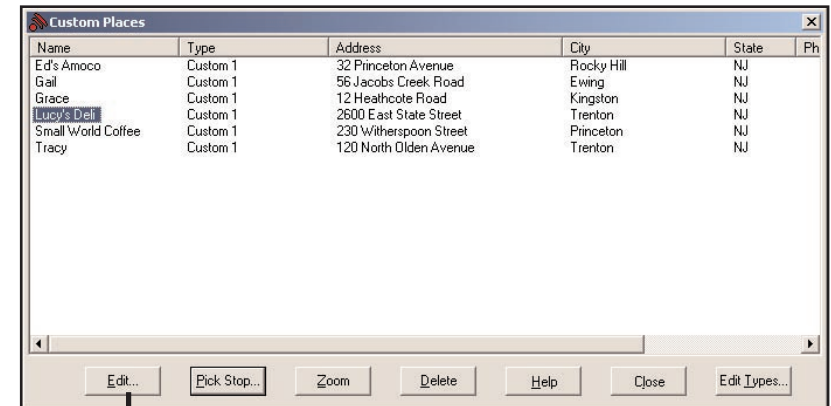
To skip this step, uncheck **Save the columns as a new set**. Click **Finish**.



Editing Custom Places in the Database

After custom places have been added to the database, they can be edited at any time. Select **Manage Custom Places** from the **Tools** menu, then highlight the custom place you wish to edit, click **Edit**, and make your changes. Click **Apply** when finished.

NOTE: By default, addresses entered as Custom Places are assigned to the Custom POI category. You can change this assignment at any time by selecting another **Category** from the drop-down pick list as you edit.



- When processing is finished, the Data Import Status window shows you how many places in your file were matched with addresses in the CoPilot database. A plus sign in the **Accept** column indicates a match. Places that failed to match appear in red and do not have a plus sign.
- To edit a failed or incomplete match, highlight it and click **Edit** (see *Editing Custom Places*, next page). POI addresses can also be edited after they are added to the database using the Custom Place Manager.
- When you are satisfied with the list of addresses, click **Add** to add these places to the CoPilot database.

Options below the list let you 1) choose whether to add all addresses on the list to the database, or just those that were accepted, and 2) determine how CoPilot will handle any address that duplicates one already in the database.



Using Your Pocket PC for Guidance

In CoPilot's Guidance Mode you will receive turn-by-turn route guidance information as you travel. For your safety the Driver Safety Screen will hide maps when your speed exceeds 10 m.p.h. to avoid distractions.

REMINDER: CoPilot won't open on your Pocket PC unless map data has been previously downloaded from the CoPilot desktop application.

For IN-VEHICLE HARDWARE SETUP: See *Getting Started - Hardware*, p. 3.



1. To launch CoPilot, tap **Start**, choose **Programs** from the drop-down menu, then tap the **CoPilot** application.

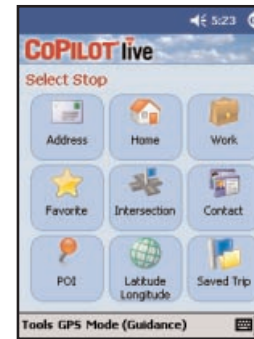
2. **The first time you use CoPilot**, you will be asked to enter a nearby city. The program may take a few minutes to acquire a GPS signal and determine your position. If a signal has not been obtained after several minutes, refer to *Trouble--shooting*, p. 91.

3. The *Welcome* screen gives you several choices:

- **Going To** to enter a destination and receive guidance
- **Tutorial** for first-time users
- **Help** topics about basics such as trip entry, hardware setup, and route options
- **GPS** to set up your GPS receiver
- **Options** to change CoPilot routing, guidance, and map options
- **Live Setup** for live communications

4. Tap **Going To**. The *Going To* screen will list your stops. From here you can add a stop, start a new trip (deleting the old one), or tap **Start Driving** to begin receiving guidance to your destination(s).

5. Tap **Add Stop** to enter one or more destinations in the *Select Stop* screen and begin driving.



6. The *Select Stop* screen provides you with several different ways to enter a destination. You can:

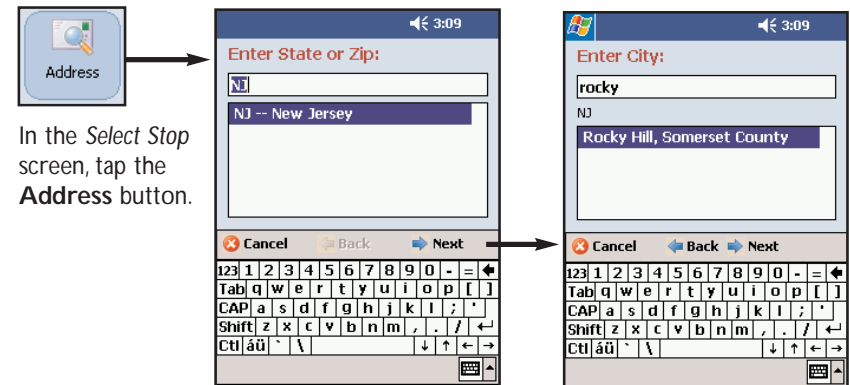
- Enter a new **Address**
- Program or enter your **Home** address
- Program or enter your **Work** address
- Select from your **Favorite** list
- Search for a **Point of Interest (POI)**
- Enter an **Intersection**
- Enter a **Contact** from Outlook Express
- Enter a **Latitude/Longitude** point
- Enter a previously **Saved Trip**

Tap the option you want to use. These options are described on the following pages.

Address Entry

NOTE: There is no need to enter a starting point. CoPilot uses GPS positioning to determine your location automatically.

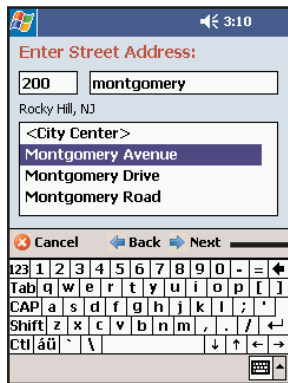
Address entry is a step-by-step process in which you enter the state or ZIP code, city, and house number/street name in separate screens. As you type each entry, matches in the database appear on a pick list below. Tapping an item on the list enters it, then you tap **Next** to confirm and move to the next screen.



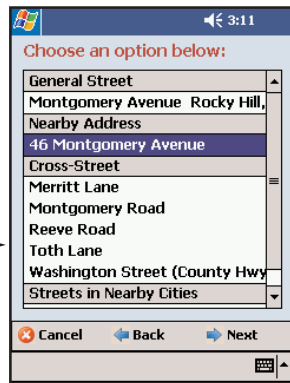
In the *Select Stop* screen, tap the **Address** button.

1. Enter a **State** or **ZIP** code. Pick a state from the scrollable pick list or type in a ZIP code, then tap **Next**. If you type a state abbreviation, CoPilot will find that state in the pick list.

2. (If you entered a ZIP code, skip to step 3.) Start typing a **City** name. When a match appears on the list below, tap it and then tap **Next** to continue.



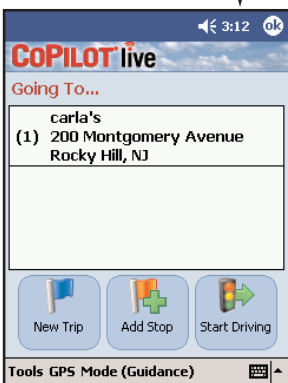
3. Enter a house number if you like (it's optional), then start typing a **Street name**. When a match appears on the list below, tap it, then tap **Next**.



4. If an exact database match is not found, you'll be shown the available address options. CoPilot will give you at least one of these options: the **General Street** you entered, a **Nearby Address**, a **Cross Street** on the street you entered, or one of several **Streets in Nearby Cities**. Tap your choice, then tap **Next**.



5. (Optional) Type a name for this place if you like, then tap **Finish**.



6. After entering a destination, you will be taken back to the *Going To* screen. The destination you just entered will be listed as the first stop on your trip.

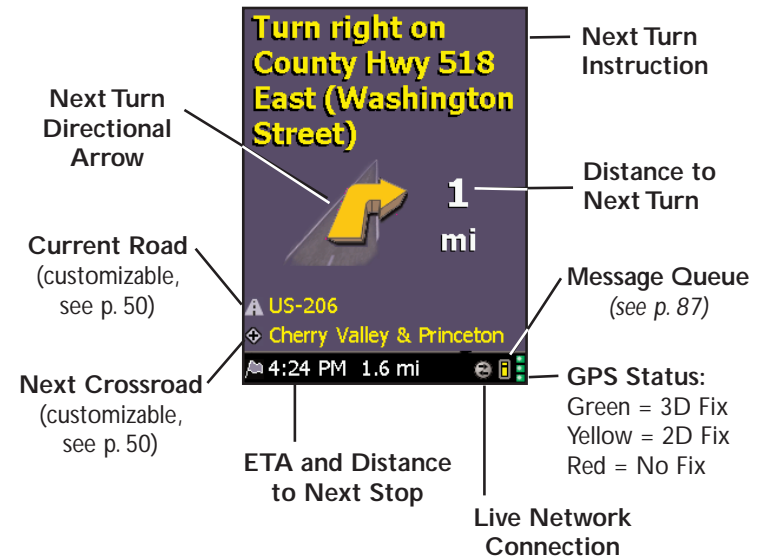
At this point you can tap **Add Stop** to enter additional stops, **New Trip** to delete all stops on this trip and begin a new one, or **Start Driving** to begin receiving guidance to the destination(s) you entered.

7. **To begin your trip**, simply tap the **Start Driving** button and start driving! Once your position has been determined (this can take a few seconds), CoPilot will speak directions out loud to you, and your position and next turn information will be displayed on the screen as you drive.

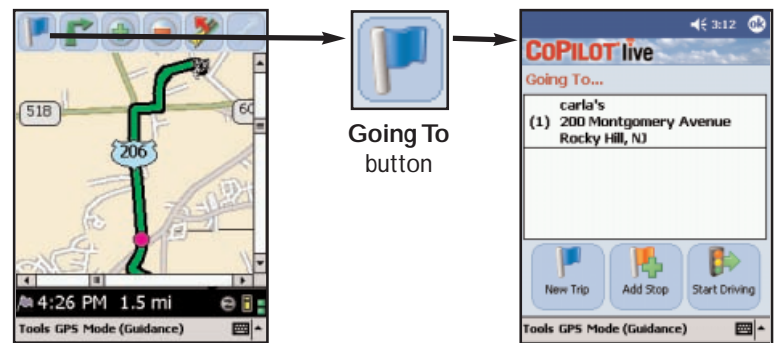
Start Driving!

After entering one or more destinations, start driving and enjoy CoPilot's spoken instructions, continuously updated maps and ETA's, and automatic route recalculation capabilities.

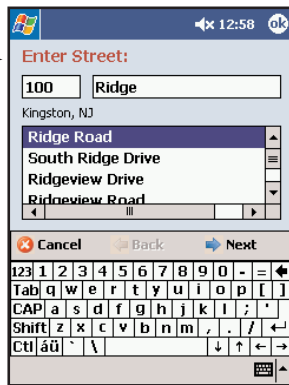
A text-only Driver Safety Screen will replace the Map Screen when your speed exceeds **10 m.p.h.**



To return to the Going To screen to edit your trip at any time, first tap at the top of the guidance screen to bring up the toolbar. Then tap the **Going To** button.



Entering a Home Address



In the *Select Stop* screen, tap the **Home** button in the *Select Stop* screen. The first time you use this button, you will be prompted to enter your home address.

Enter your home address the same way you enter a new address (described on p. 30-31).



The next time you tap **Home**, your home will be entered as a destination. To change your home address, choose **Options** in the **Tools** menu and tap **Favorites** (see p. 51).

Favorites

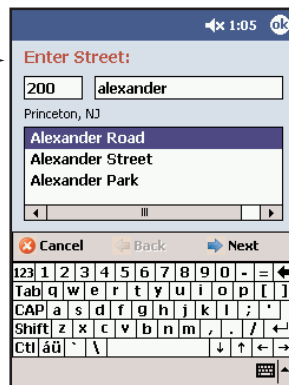


In the *Select Stop* screen, tap the **Favorite** button. A scrollable list will appear, providing quick access to the last 50 destinations that were entered.

Tap a Favorite on the list to enter it as a destination. To change which Favorite is assigned to the **Home** or **Work** buttons, choose **Options** in the **Tools** menu and tap **Favorites** (see *Tools Menu Options*, p. 49).

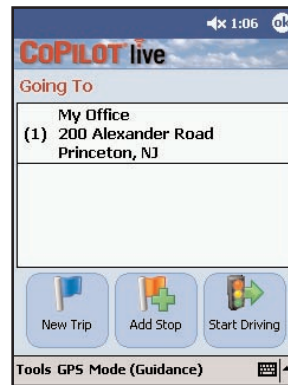
NOTE: When your Favorites list is filled (50), each new address will replace the address that has been inactive for the longest period of time.

Entering a Work Address



In the *Select Stop* screen, tap the **Work** button in the *Select Stop* screen. The first time you use this button, you will be prompted to enter your work address.

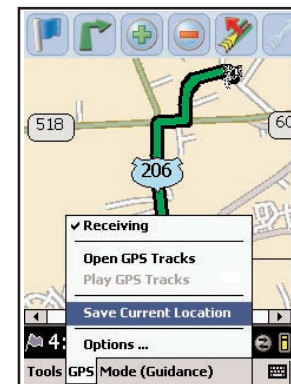
Enter your work address the same way you enter a new address (described on p. 30-31).



The next time you tap **Work**, your work address will be entered as a destination. To change your work address, choose **Options** in the **Tools** menu and tap **Favorites** (see p. 51).

To Save Your Current Location As a Favorite:

You must be receiving GPS data to save your current location as a favorite. Tap the **GPS** menu, then select **Save Current Location**.

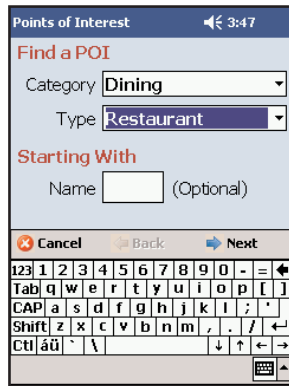


A prompt will ask you to assign a location name to your current location. After you enter a name, your current location will be saved in the Favorites list.

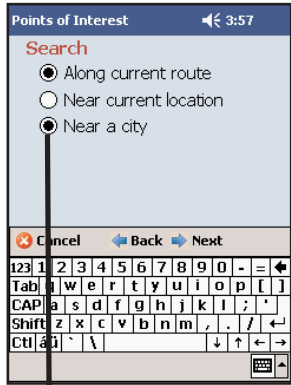
Finding Points of Interest



In the *Select Stop* screen, tap the **POI** button to search for and/or enter a point of interest as a destination.



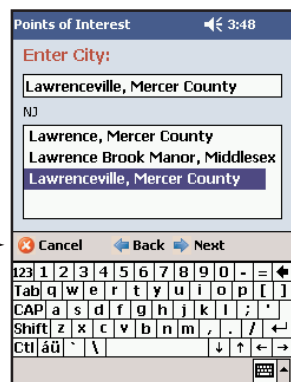
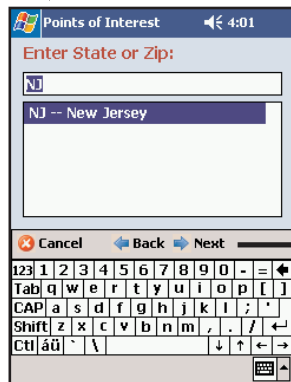
1. In the first POI screen you have the option to choose a **Category** and **Type** of POI from the drop-down pick lists. To narrow your search and cut down on the time it takes, you can also type the first few letters of a place you have in mind. Tap **Next** to continue.



2. In the next screen, you can tell CoPilot to search **Near current location** or **Along current route** if a GPS signal is present.

Or choose **Near a city**, then enter a state and city or ZIP in the next two screens.

Tap **Next** to execute the search.



3. When the search process is complete, a scrollable list of matches will appear. In this screen you have several choices, you can:

- Highlight a POI and tap **Map** to preview it on the map (see below)
- Tap **Expand** to expand the area of the search (this can be done twice)
- Highlight a POI and tap **Finish** to enter it as a destination.

Map Preview of a POI:

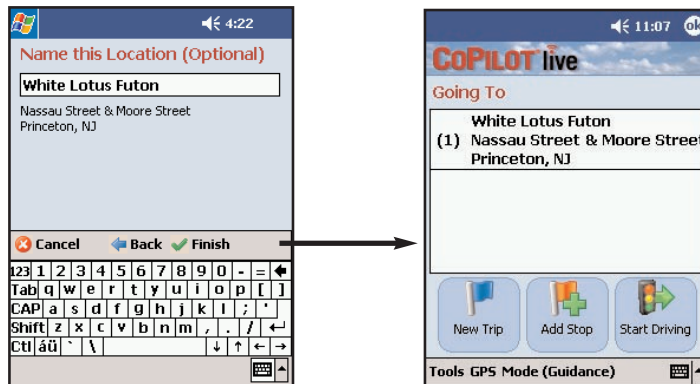
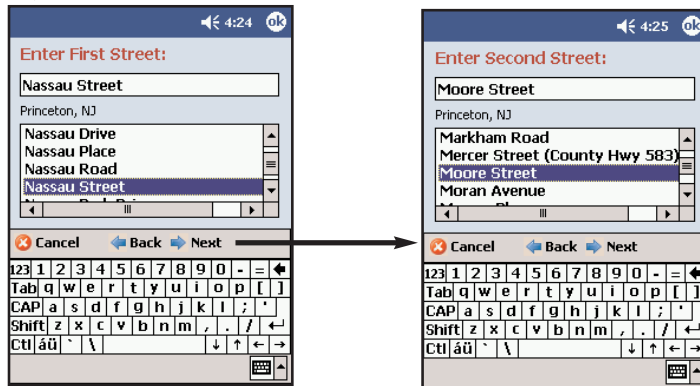
To preview a POI on the map before you decide to enter it as a destination, highlight it on the match list and tap **Map**. In the map screen, a sliding bar you zoom the view in and out. Click **Close** to return to the match list. In the *Matches* screen, tap **Finish** to enter the highlighted POI as a destination and return to the *Going To* screen, or **Expand** to run another search within a larger area.



Intersection

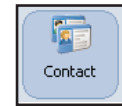


To enter the intersection of two roads, tap the **Intersection** button in the *Select Stop* screen. Intersections are entered just like addresses (see 30-31), except that instead of a house number you enter a “First Street” and “Second Street”. You can name this location if you like.

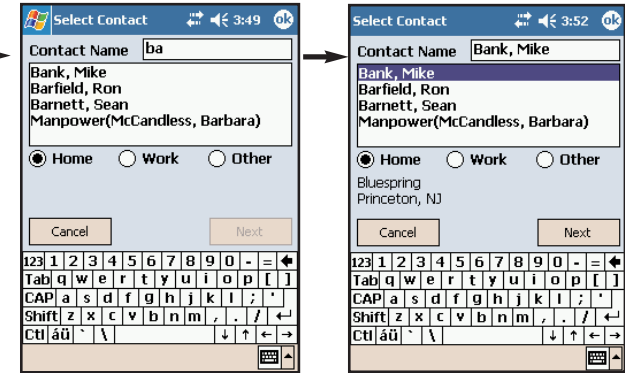


Contact Integration

CoPilot allows you to link directly to Pocket Outlook to retrieve address information. With just a few of quick taps of the stylus, you can enter a contact's home and/or work address as your destination.



1. Tap the **Contact** button in the *Select Stop* screen.



2. Type the first letters of your Contact's first or last name.

3. Select a name from the Contact lists, and with your selection highlighted, choose an address type (**Home**, **Work**, or **Other**). The address you select will be displayed below. Tap **Next** when ready.



4. If necessary, CoPilot will prompt you to correct any part of the address in your Contact database that does not result in a perfect match — you might be prompted to edit the city, state, street, or house number so CoPilot can find it.

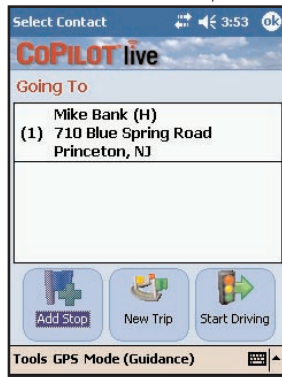
In the example to the left, no match was found for the street name — “Bluespring” was one word in the Contact record. Also, the Contact address did not include a house number, so “710” was added manually in this screen for more precise guidance.

NOTE: If CoPilot finds an exact match, it automatically goes to a screen that lets you name the address you entered (see step 5).



5. Once the address has been matched, you have the option of assigning a name to the address. CoPilot will pre-fill the name from your Contact record, but that name can be edited here.

Tap **Next** to continue.

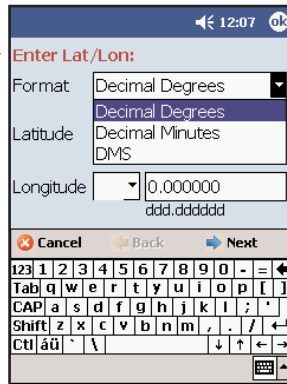


6. The Contact address will be added to your trip itinerary as a stop.

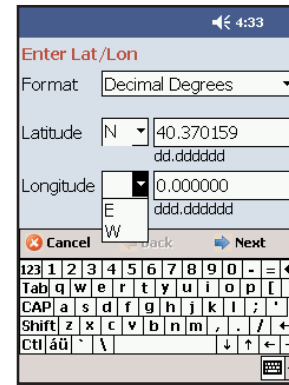
Latitude/Longitude



Tap **Latitude/Longitude** in the *Select Stop* screen to enter a lat/long point.



1. Choose a format from the first drop-down pick list. Lat/longs can be entered in **Decimal Degrees**, **Decimal Minutes**, or **degrees/minutes/seconds (DMS)**.



2. Enter a latitude and longitude in the appropriate format, using the drop-down pick lists for **N** or **S**, and **E** or **W**.

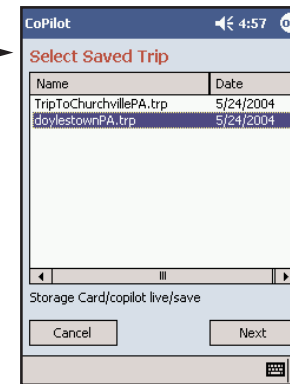
Tap **Next** to add the lat/long you entered as a stop on your trip itinerary.

Saved Trip



Tap **Saved Trip** in the *Select Stop* screen to enter a trip that was built on your desktop and transferred to your Pocket PC.

(See *Trip Transfer*, p. 24 for more about saved trips.)



Highlight a trip (.trp file) in the list of saved trips, then tap **Next**.

All destinations included in the trip will be entered, preserving the stop order of the original saved trip. The trip itinerary will also be included.

Closing CoPilot

To exit the CoPilot application on your Pocket PC, select **Exit** from the pop-up **Tools** menu at the bottom of the screen. (If the menu isn't visible, tap the top or bottom of the screen.)

Driver Safety/Map/Itinerary Screens

NOTE: It is not safe to attempt to alter settings on your Pocket PC while you are driving. Either have a passenger make changes, or pull over to a safe area.

Driver Safety Screen



The Driver Safety Screen displays a text-only screen when your speed exceeds 10 m.p.h. and is the recommended view for safe driving. When you're within .7 miles of a turn or driving less than 10 m.p.h., CoPilot automatically switches to the Map Screen display.

Next Turn Instruction: Turn left on NJ-27 North. Then turn right.

Next Turn Directional Arrow: A yellow arrow pointing left.

Distance to Next Turn: 3.2 mi

Current Road (customizable, see p. 50): Herrontown Road

Current Speed (customizable, see p. 50): 35 mph

ETA and Distance to Next Stop: 5:11 PM 49.3 mi

Message Queue (see p. 87): A small icon in the bottom right.

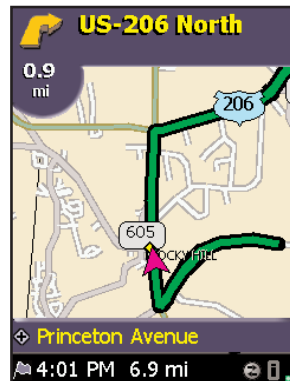
GPS Status: Green = 3D Fix, Yellow = 2D Fix, Red = No Fix

Live Network Connection: A small icon in the bottom right.

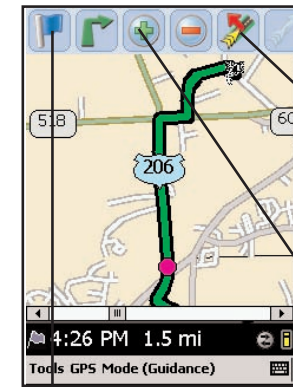
Map Screen

The Map Screen displays when you are traveling at less than 10 m.p.h. and .7 miles before each turn. It combines a large map display and concise text instructions.

At the top of the screen, your current road is shown with next turn directions (a directional arrow and distance to the next turn).



At the bottom of the Map Screen are the estimated time of arrival (ETA) at your next destination and distance to that destination, and one customizable data line (see p. 50). Three frame options are available (see p. 43).



Tap at the top or bottom of the Map Screen to invoke a toolbar and menu bar.



Use the **Detour** buttons when you want to take an alternate route to avoid heavy traffic, construction, etc. up ahead.



Use the **Zoom In** and **Zoom Out** buttons to change your view of the map.

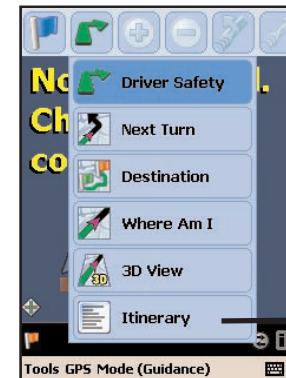


The **Going To** button takes you back to the *Going To* screen where you can edit your trip (see p. 45).

Itinerary



To see your trip Itinerary, tap the **View** button (second from left on the toolbar) then tap the **Itinerary** button in the nested toolbar.



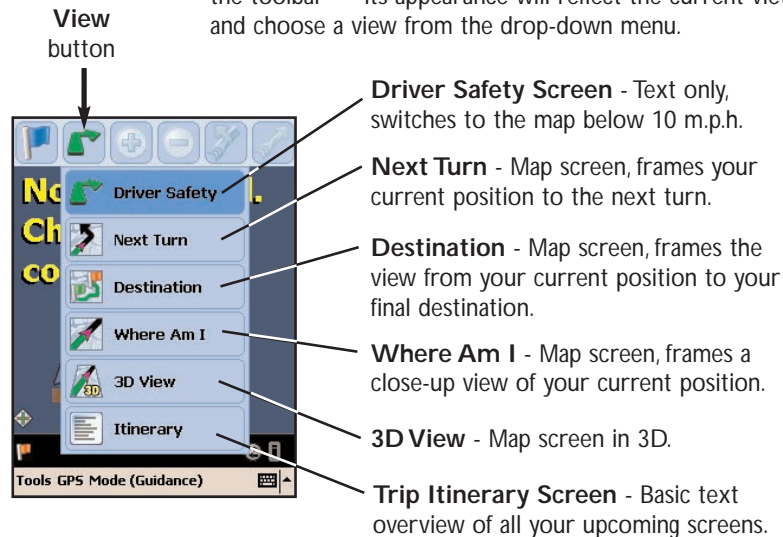
Turn Instruction	Mile
Kingston Rocky Hill ...	0.1 mi
Canal Road	3.1
Griggstown Causeway...	0.3
River Road (County...	0.1
Griggstown Road (C...	1.8
Willow Road	0.9
Township Line Road	0.1
Mattawang Golf Clu...	

3:44 PM 6.4 mi

The Trip Itinerary is a scrollable set of driving directions for the current trip. Roads on your route can be avoided using this screen (see p. 48) and stops can be reordered (use the arrow buttons on the toolbar to move them up or down).

Navigating Through CoPilot Screens

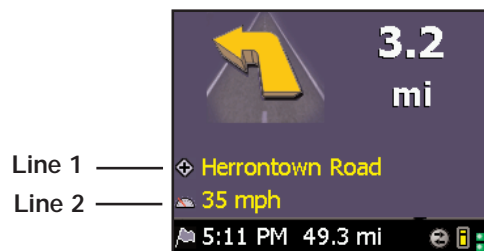
To switch views, tap the **View** button (second from left on the toolbar — its appearance will reflect the current view) and choose a view from the drop-down menu.



Customizing the Guidance Screens

The lines above the ETA in CoPilot's guidance screens can be customized. (In the Driver Safety screen there are two lines, in the Map Screen there is one.) Tap the bottom of the screen, then tap **Tools > Options > Guidance**. Use the **Custom Display** pick lists to set these lines to show your current road, nearest crossroad, nearest major road, nearest town, ETA, or speed. Another way to change these lines is by tapping on them to toggle through the options.

Several map features can also be customized. See *Tools Menu Options*, p. 49-51 for all the available options.



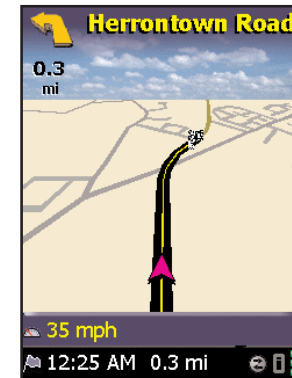
Map Modes

CoPilot gives you a choice of several different display modes for the Map Screen:

3D Perspective

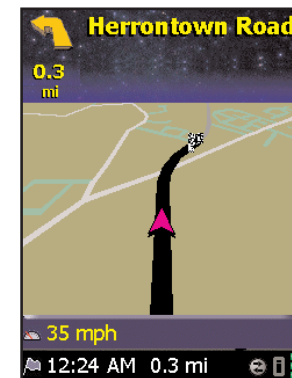
CoPilot's two-dimensional default display mode can be changed to a three-dimensional perspective based off an isometric camera angle.

To change to 3D, tap the bottom of the map display to invoke the menu bar, then tap **Tools > Options > Map**. Check **Display 3D Map**.



Night Mode

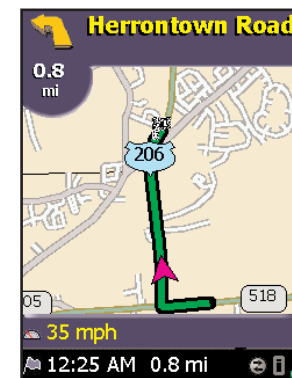
Night Mode is available in 2D or 3D (3D perspective is shown to the right). It dims the PDA display and a darker map display is used to reduce glare and eye strain while driving with CoPilot at night. CoPilot automatically switches to Night Mode based on your location and current time. To switch modes manually, use Left on the Directional Pad to toggle them.



Route Over

Route Over highlighting outlines your route in black on the map for more visibility. This option is turned on by default.

To turn the Route Over option off, tap the bottom of the map display to invoke the menu bar, then tap **Tools > Options > Map**. Uncheck **Route Over**.

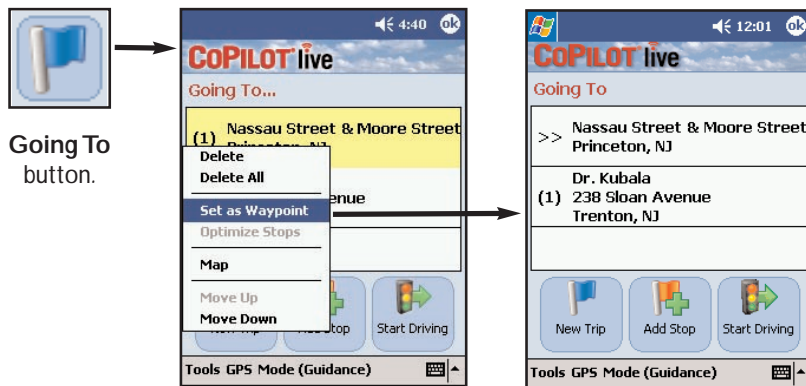


Trip Editing and Waypoints

To get to the *Going To* screen from the guidance screens at any time, tap the top or bottom of the screen to open the toolbar, then tap the **Going To** button. From here you can edit the current trip, add additional stops, or start a new trip.

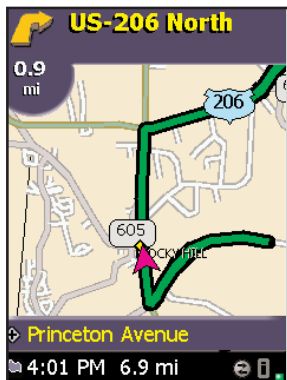
Tap any stop on your itinerary to activate a pop-up menu that lets you **delete** the stop, zoom to it on the **map**, or **move it up or down** to change the stop order. This menu also lets you designate a stop as a "waypoint" (tap **Set as Waypoint**). Waypoints are not considered as stops in the Itinerary, their purpose is to guide CoPilot's route calculations along roads that you choose. To change a waypoint back to a stop, choose **Set as Stop** from the menu. Waypoints appear with ">>" instead of a stop number on the list of destinations.

CoPilot ignores waypoints when calculating the ETA and distance to the next stop, so settings waypoints can be used to get the ETA and distance to a stop that is not your next stop (see *Getting ETA's and Distances* below).



Going To button.

Getting ETA's and Distances

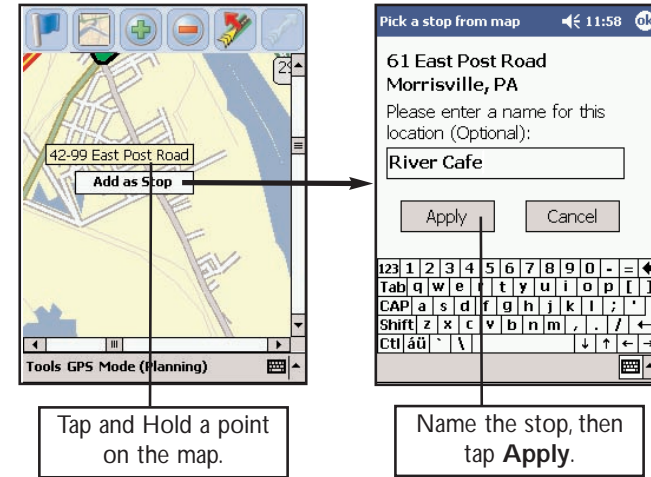


The estimated time of arrival (ETA) and distance to your next stop will always be shown in the lower left corner of the Map and Driver Safety screens. After entering a destination, tap **Start Driving** to see the ETA/distance.

If your trip has multiple stops and you want to know the ETA for a destination that is not the next stop, designate the stops between your current location and the target stop as waypoints (tap each one and choose **Set as Waypoint** in the menu that pops up).

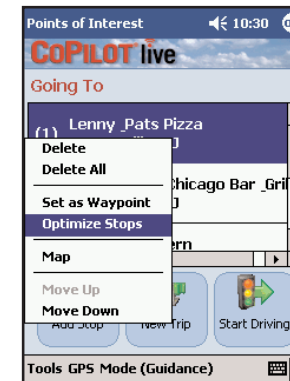
Picking Stops From the Map

CoPilot enables you to pick a stop off the map when you don't know the exact address of your destination. In any mode, tap and hold on your target location on the map. (A short tap displays street names if you're not sure where you are pointing.) In the screen that appears, enter a name for the place you picked and tap **Apply**. The new place will be added to your trip itinerary.



Optimizing Stops

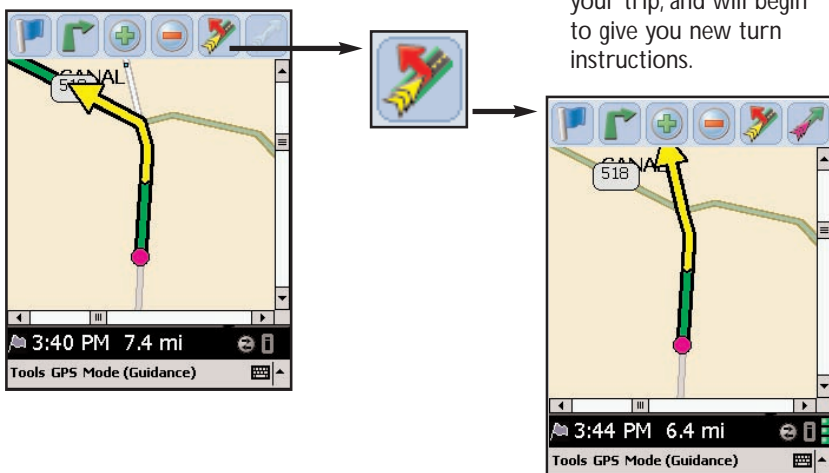
To rearrange the stops on your trip in the most efficient order, tap one of the stops in the *Going To* screen. Select **Optimize Stops** from the menu that pops. You must have at least three stops to optimize — the destination always remains the same.



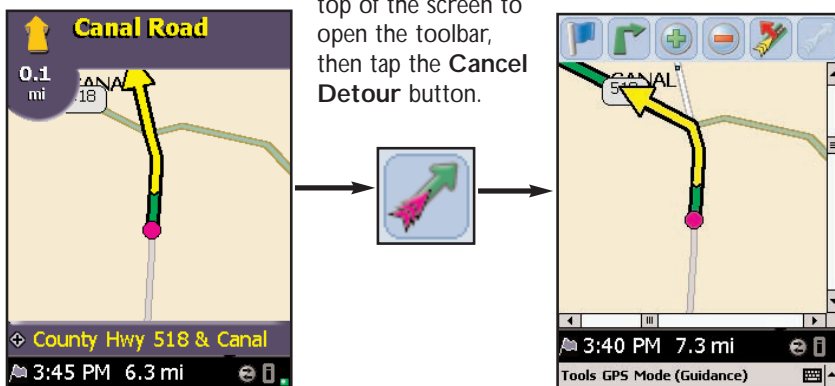
Detour Feature

CoPilot's Detour Feature allows you to preview an alternate route before deciding whether or not to take it. Perfect for situations in which traffic has suddenly slowed ahead of you, the Detour Feature will generate an alternate route and tell you exactly how much distance the new route will add to your trip. You can then make an informed decision about whether you're better off driving through the delay or taking the new route.

1. To see an alternate route, tap the top of the screen to invoke the toolbar.
2. Tap on the **Detour** button to request a new route.
3. CoPilot's voice will tell you how many miles the new route will add to your trip, and will begin to give you new turn instructions.



4. If you decide to use the new route, just keep driving.
5. If you decide not to use the new route, tap the top of the screen to open the toolbar, then tap the **Cancel Detour** button.
6. CoPilot will then return you to your original route.

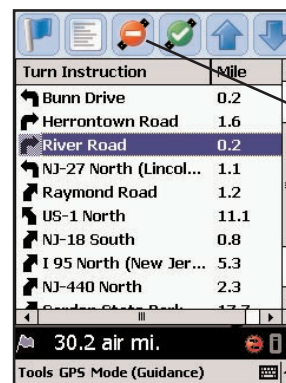


Selective Routing

CoPilot allows you to be selective about the roads you take on your trip. There are two ways to do this: 1) you can customize your Trip Itinerary in Guidance Mode so that CoPilot will avoid certain roads; or 2) you can guide CoPilot's route by entering stops as "waypoints".

Avoiding a Road in the Trip Itinerary

1. Tap the **View** button (second from the left on the guidance screen toolbar) then tap the **Itinerary** option. The Itinerary lists all roads you will be traveling on if you have entered at least one destination.



2. Highlight the road you want to avoid by tapping it once.



3. Tap the **Avoid** button, and CoPilot will calculate a new route that avoids that road. **This can be repeated.** If there is no other possible road or the alternate route is too impractical, a new route won't be generated.



4. **To Return to the Original Route:** You can return to the original route that CoPilot gave you at any time by tapping the **Cancel** button.

Tailoring Your Route Using Waypoints

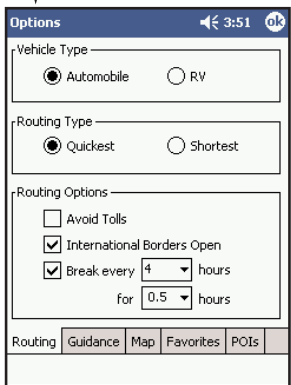
CoPilot lets you customize a route by designating some stops as "waypoints". Waypoints appear on the Itinerary but they're not treated like stops in Guidance Mode and or in routing instructions. You can enter a waypoint along a road you want CoPilot to use, and CoPilot will guide you through the waypoint toward your destination.

To designate a place as a waypoint, enter it as a stop in the *Going To* screen. Tap and hold the location on the *Going To* list until a menu pops up, then choose **Set as Waypoint**. Waypoints appear on the *Going To* list preceded by ">>" instead of a stop number. To turn the location into a stop again, repeat and choose **Set as Stop**. You can set as many waypoints as you like on a trip; however, CoPilot will always recognize the last address in the *Going To* list as a stop.

Tools Menu Options



Tap the bottom of either the Map Screen or the Driver Safety Screen to access the menu bar. Then tap the pop-up **Tools** menu and select **Options**.



Routing

In the **Routing** tab, the vehicle type options are **Automobile** or **RV**. **RV** routes favor major roads and avoid sharp turns and U-turns wherever possible.

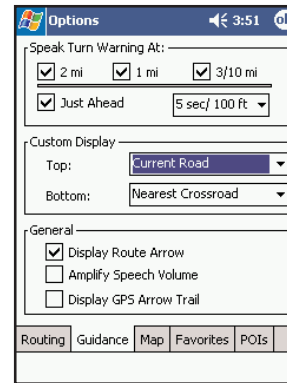
The **Quickest** routing type is based on the most practical route in terms of road quality, terrain, and urban/rural classifications. **Shortest** routing travels the least distance where possible while maintaining some level of practicality.

More routing options are:

Avoid Tolls — Check to avoid tolls wherever possible and practical.

International Borders Open — (*North America only*) Check to have CoPilot route across international borders. When this option is turned off, your route won't cross borders even when it would be more practical.

Break every ___ hours for ___ hours — Check to have the ETA for your trip adjusted to reflect stops for breaks.

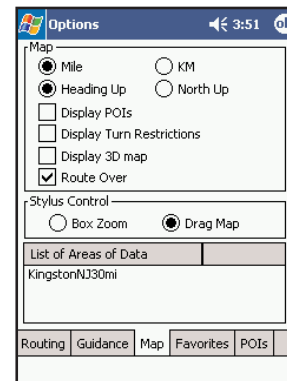


Guidance

In the **Guidance** tab, the settings under **Speak Turn Warning At** determine how often and where CoPilot will give you next turn information out loud. All, none, or some boxes can be checked. A pick list gives the options for **Just Ahead**: by default you will be alerted **5 sec/100 ft** before every turn (5 seconds or 100 feet, whichever is closest), but you can choose to have CoPilot speak to you sooner (2 - 8 seconds before each turn, or 100 feet).

The pick lists under **Custom Display** give you display options for the lines above the ETA in the guidance screens. These lines can display the current road, nearest crossroad, nearest major road, nearest town, ETA, or speed. **NOTE**: Defaults are set here, but you can also toggle through the options by tapping the lines themselves. Only Line 2 shows up in the Map Screen, both lines are visible in the Driver Safety Screen.

Check **Display Route Arrow** to have a yellow turn arrow appear on your route on the map as you approach each turn (this option is turned on by default). Check **Amplify Speech Volume** to have CoPilot speak louder (only active if the TTS — text to speech — voice option was selected when CoPilot was installed). Check **Display GPS Arrow Trail** to keep a trail of arrows that tracks your position as you drive on the map.



Map

Data areas that are currently downloaded to your mobile device are shown at the bottom of this screen.

Options in the **Map** tab are:

Mile — Use miles as the unit of distance.

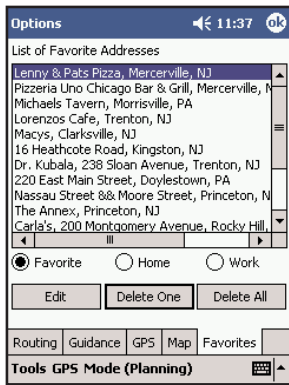
KM — Use kilometers as the unit of distance.

Heading Up — The map display will always track your position moving upward.

North Up — The map display will always maintain north at the top as you drive.

Box Zoom — This option is selected by default. It enables you to zoom into an area on the map by drawing a box around it with the stylus.

Drag Map — Selecting **Drag Map** lets you use the stylus to drag the map in any direction to a desired location. Place the stylus on the map and move it across the screen.



Favorites

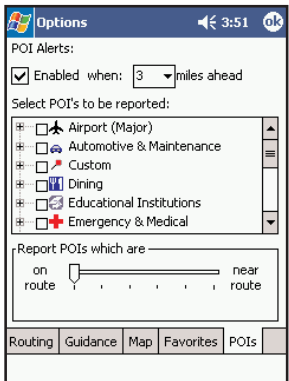
Tap the **Favorites** tab to open your **List of Favorite Addresses**.

To change the assignment of your work or home address, highlight your choice on the list and then tap either **Work** or **Home**.

To edit an address, highlight it and tap **Edit**. Then make your changes in the *Edit Address* screen and click **Next**. Note: POI's cannot be edited, you will get a "No matches found" error message if you try.

To delete a favorite, highlight it and tap **Delete One**. To delete all favorites, tap **Delete All**.

NOTE: When your favorites list is filled (50), each new address will replace the address that has been inactive for the longest period of time.



POIs

Tap **Enabled** to enable POI Alerts. CoPilot will then alert you with voice prompts to the presence of points of interest as you approach them. You can use the drop-down pick list to set how far away you'll be when you receive the alerts. In the list of POI categories, select which types of POIs should be reported.

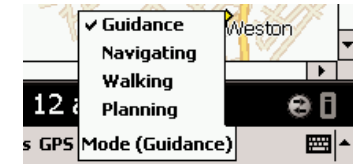
Move the slider bar at the bottom of the screen to limit alerts to POIs right on your route or to include POIs that are nearby.

Modes Menu

CoPilot has four modes of operation on the Pocket PC. Tap the pop-up **Mode** menu at the bottom of the screen to select **Guidance**, **Navigating**, **Walking**, or **Planning Mode**.

Guidance Mode

In Guidance Mode, you enter one or more destinations, then tap the **Start Driving** button to start driving and receive guidance. This mode provides you with on-screen and spoken driving directions and other information relevant to your trip, such as estimated time of arrival and distance to the next stop.



To receive driving directions and other data, you must have a GPS receiver attached to your Pocket PC and the receiver must be in a good position to receive signals. Also, **Receiving** must be turned on in the **GPS** menu.

Navigating Mode

While in Navigating Mode, CoPilot will track your position as you drive. Unlike in Guidance Mode, you won't receive turn instructions or voice prompts.

This tracking feature is an ideal way to see your location on the map if you don't want to be distracted by CoPilot's guidance features. Note that a GPS receiver must be attached and receiving signals.

Walking Mode

Take CoPilot with you wherever you go! Walking Mode provides an as-the-crow-flies distance and direction line to your destination, directions that are perfect for walking. A GPS receiver must be attached and receiving signals.

Planning Mode

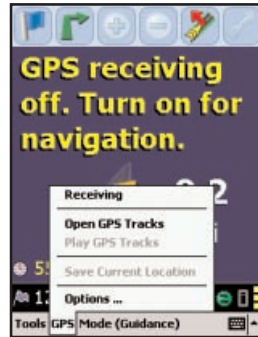
Planning Mode lets you use your Pocket PC as a pre-trip planning tool or easy-to-use reference guide. Planning Mode lets you view static maps and directions without the need for a GPS receiver.

Trip itineraries you create in Planning Mode can be saved and then loaded in any mode at a later time (generate directions, then select **Save Trip As** from the **Tools** menu).

The GPS Menu

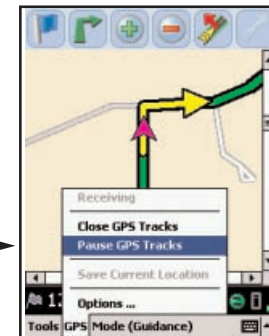
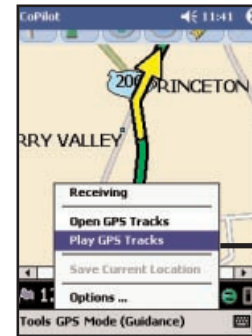
Receiving signals-ON

Receiving signals-OFF



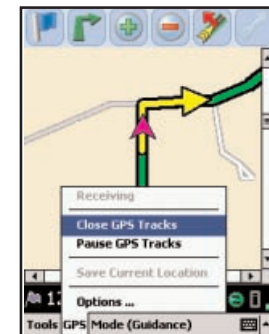
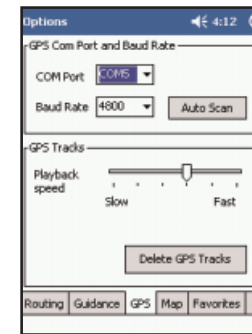
Select **Receiving** from the **GPS** menu to activate or deactivate GPS satellite reception. **Receiving** is active if it is checked.

Tap once to change the status. If **Receiving** is not checked, CoPilot will be unable to provide driving instructions.



3. Select **Play GPS Tracks** from the **GPS** menu to begin track playback in any screen.

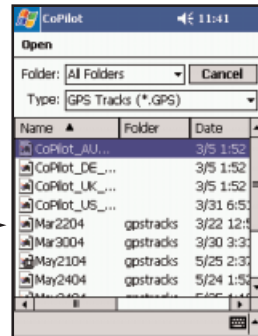
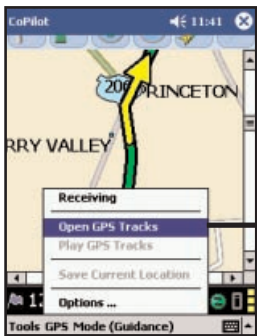
4. During track playback you can select **Pause GPS Tracks** to stop the track from playing.



4a. Playback can be viewed in any window. To control the speed, select **GPS** menu > **Options**, tap **Track Playback**, then use the sliding bar.

5. Select **Close GPS Tracks** from the **GPS** menu to stop the track from playing. To turn receiving on, tap **Receiving**.

Open and Play GPS Tracks



1. CoPilot automatically creates .gps track files as you drive, and stores them at the end of each trip. To open a GPS track, **Receiving** must be turned off. Select **Open GPS Tracks** to open a Windows folder of your stored .gps files.

2. To access a track, tap once on the file you want to select.

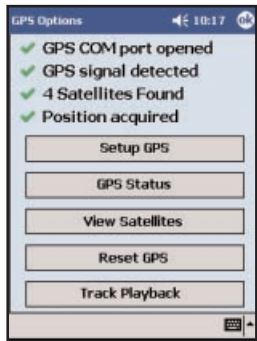
Save Current Location

Select **Save Current Location** from the **GPS** menu to save your current location as a favorite place (you must be receiving GPS data to do this). A prompt will ask you to assign a location name to your current latitude/longitude position. After you enter a name, your current location will be saved in the Favorites list.



NOTE: Remember that when your favorites list is filled (50), each new address will replace the address that has been inactive for the longest period of time.

Options



Select **Options...** in the **GPS** menu to set up or reset your GPS, view GPS satellite activity, or set the speed at which GPS tracks play back.

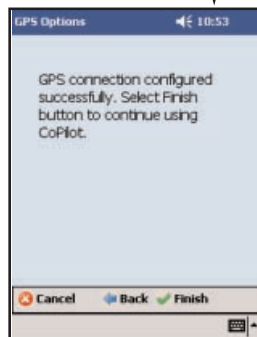
NOTE: These options can also be accessed from the *Welcome* screen — tap **GPS**.

Setup GPS

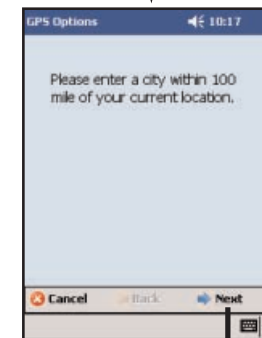


Tap **Setup GPS** to have CoPilot search for your GPS receiver (your receiver must be attached). Tap **Next** to start the scan. When your receiver is located, you'll see the message "GPS connection configured successfully". Tap **Finish** to continue.

If you need to change the COM port setting, tap **Manual**, make the change, then tap **Next**.



Reset GPS

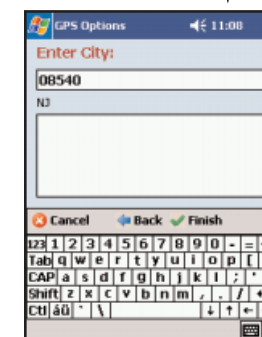
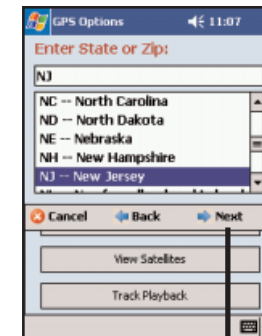


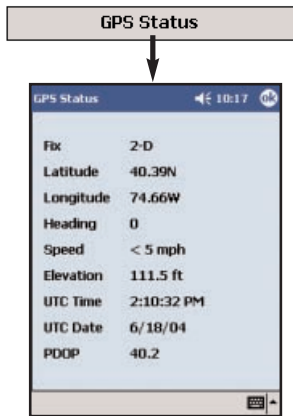
If CoPilot is having trouble acquiring a GPS fix, try tapping **Reset GPS**. You will be asked to enter a city within 100 miles of your current location:

1. Tap **Next**.
2. Type a state abbreviation.
3. Tap **Next** again.
4. In the next screen, enter a city or ZIP.
5. Tap **Finish**.

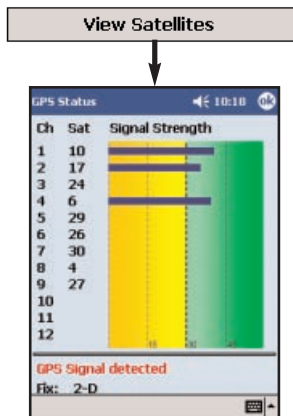
CoPilot should now be able to acquire a GPS fix on your location, and you'll see the message "GPS connection configured successfully".

If this process is not successful, see *Trouble-shooting*, p. 91.

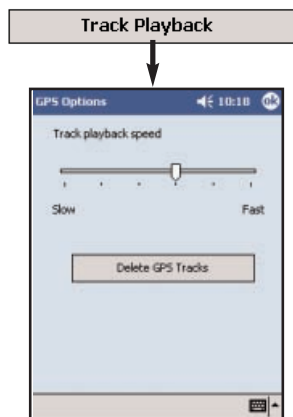




To view your satellite activity at any time, first tap the **GPS Status** option. Here you will receive information on speed, lat/long position, heading, and time and date.



For more satellite acquisition information, tap the **View Satellites** option. To get a 3-D fix (required for CoPilot to locate your position) you must have four satellites "in the green" for several seconds.



To control the speed of your GPS track playbacks, tap the **Track Playback** option. Use the slider bar to speed up or slow down the playback speed.

Tap **Delete GPS Tracks** to delete all .gps files from the folder where they are stored (usually the *My Documents* folder on your mobile device or storage card).

Reference: Screens & Toolbars in Guidance Mode on Your Pocket PC

The following is a summary guide to the screens and toolbars you will see on your Pocket PC as you operate CoPilot in Guidance Mode.

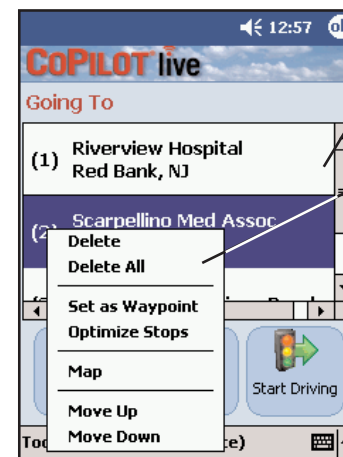
Welcome Screen



The *Welcome* screen appears when you first open CoPilot. If you don't want to see it at startup, uncheck **Show this screen at startup**. This screen can be accessed from the Tools menu at any time. *Welcome* screen options are:

- **Going To** to enter a destination and receive guidance
- **Tutorial** for first-time users
- **Help** topics about basics such as trip entry, hardware setup, and options
- **GPS** to set up your GPS and for GPS information
- **Options** to change CoPilot routing, guidance, and map options
- **Live Setup** for live communications

Going To Screen



This screen displays a scrollable list of all stops in the current trip, numbered in the order CoPilot will route to them.

Tap and hold the stylus on a stop to open a menu that lets you delete the stop, zoom to it on the map, move it up or down on the list, or make it a waypoint (an unreported stop that guides your route along preferred roads). You can also optimize the stop order for a more efficient route using this menu.

Tap **Add Stop** to enter another stop in the *Going To* screen, **New Trip** to delete all stops and start a new trip, or **Start Driving** to receive guidance.

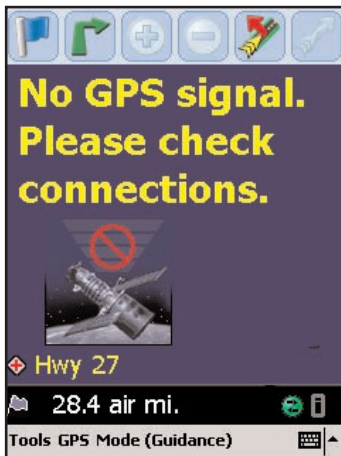
Select Stop Screen



In this screen you add stops to your trip. There are nine different types of stop entry to choose from:

- Enter a new **Address**
- Program or enter a **Home** address
- Program or enter a **Work** address
- Select from your **Favorite** list
- Search for a **Point of Interest (POI)**
- Enter an **Intersection**
- Enter an Outlook Express **Contact**
- Enter a **Latitude/Longitude** point
- Enter a previously **Saved Trip**

No GPS Signal



When you see this screen it means that CoPilot is not receiving data from the GPS unit.

- 1) Check that all your connections have been made correctly, and that all wires are secure.
- 2) Make sure your receiver is plugged into your vehicle's power source.
- 3) In the drop-down *GPS* menu on your Pocket PC, be sure *Receiving* is checked.

Determining Current Position

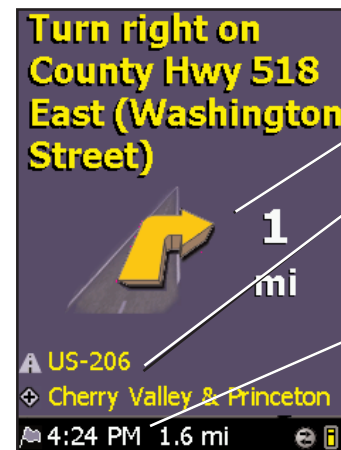


When you see this screen, CoPilot is in the process of determining where you are. This can take a few seconds. The picture under the text will indicate how close you are to acquiring a fix.

Heavy foliage, tall buildings, or any other structures obstructing communications may interfere with CoPilot's ability to track your location. Like your car radio, GPS tracking can also be affected by weather conditions if severe. CoPilot will continue tracking as soon as adequate signals are available.

Driver Safety Screen

The Driver Safety Screen automatically displays when your vehicle travels at more than 10 m.p.h. If you are a passenger and want to see the map at this point, tap the top or bottom of the screen, tap the **Change View** toolbar button and then the **Map** button (see *Navigating Through CoPilot Screens*, p. 43).



Next turn instruction.

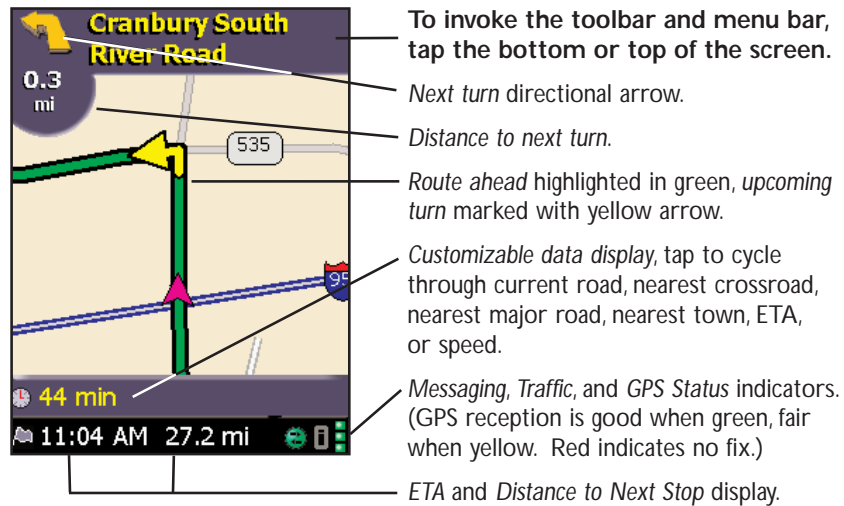
Next turn arrow and distance to next turn.

Customizable display lines, tap to cycle through your current road, nearest crossroad, nearest major road, nearest town, ETA, or speed.

ETA and Distance to Next Stop display.

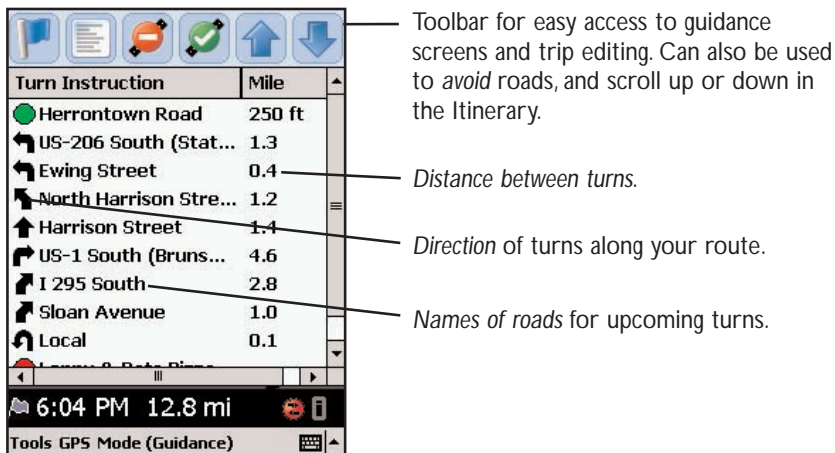
Messaging, Traffic, and GPS Status indicators. (Green = 3D fix, Red = 2D fix, Yellow = no fix)

Map Screen



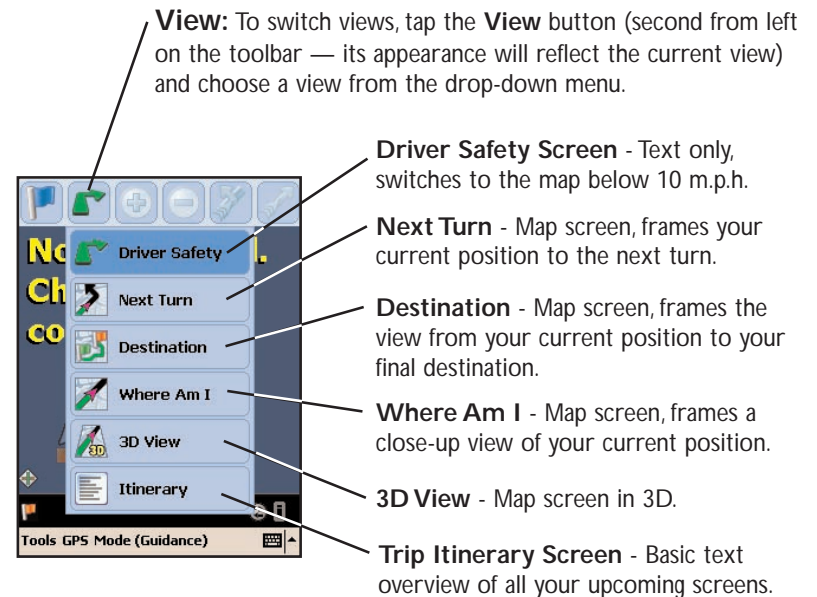
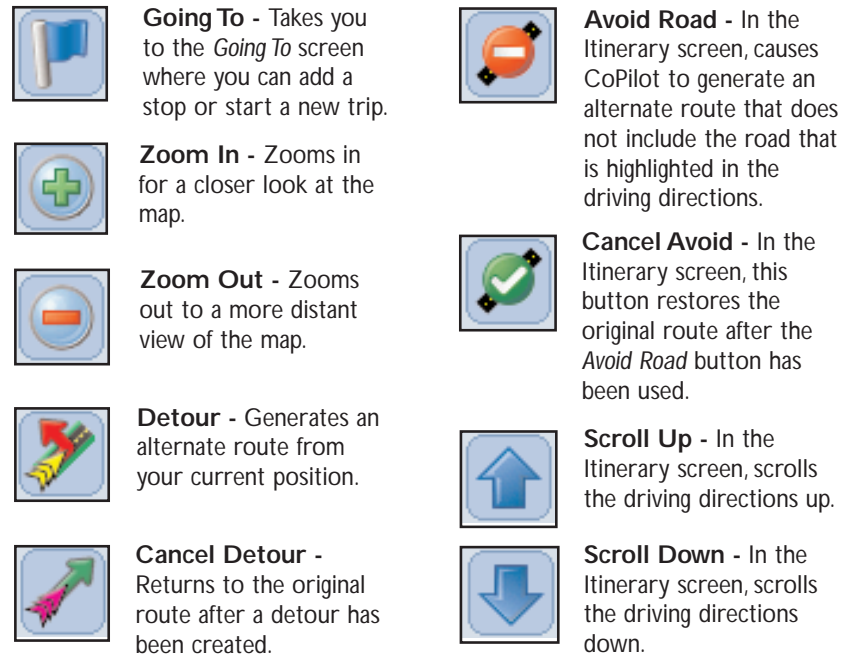
Itinerary Screen

The Itinerary provides turn-by-turn driving directions. In this screen you can highlight a road to avoid and CoPilot will generate a detour around that road (see *Selective Routing*, p. 48).



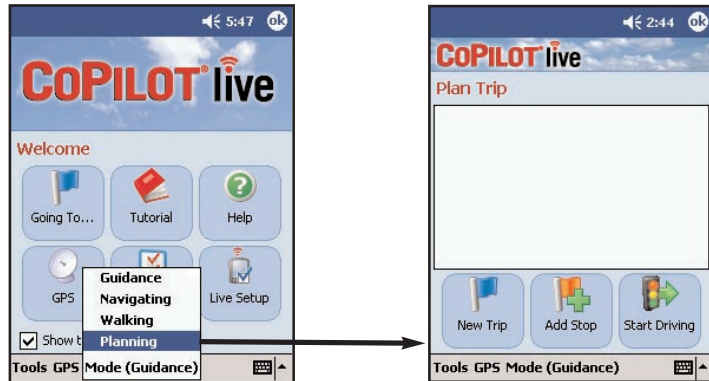
Toolbar Buttons

(Tap at the top or bottom of the screen if the toolbar is not visible.)

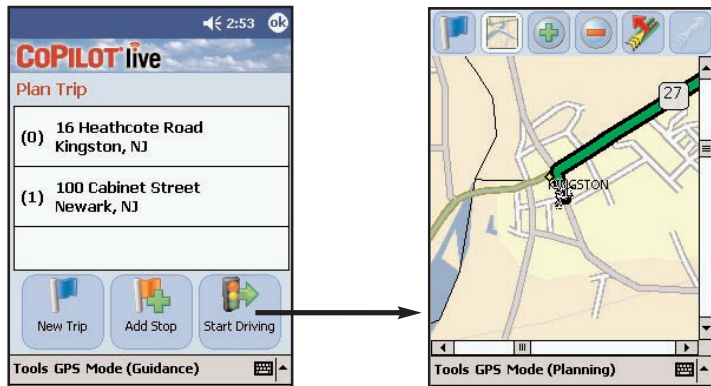


Trip Planning on Your Pocket PC

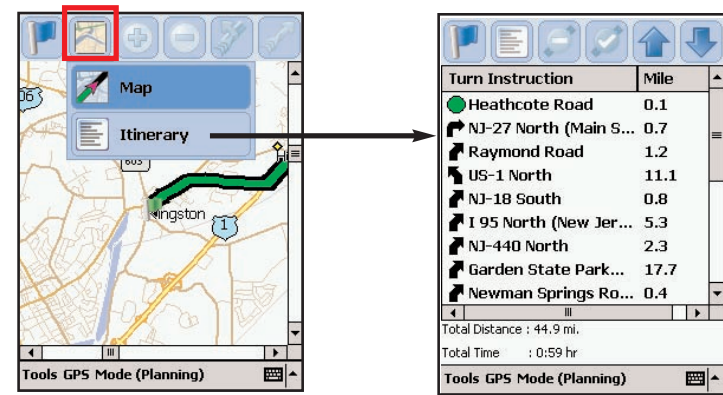
You can use CoPilot on your Pocket PC for trip planning whether or not the GPS receiver is connected and receiving data. Planning Mode allows you to run a trip on your Pocket PC even when you're not in your car. You'll get driving directions and maps that you can use for reference before your trip begins.



1. First turn on your Pocket PC and launch CoPilot (tap **Start** > **Programs** > **CoPilot**). In the *Welcome* screen, tap the **Mode** menu and select **Planning**.
2. The *Plan Trip* screen will open. Tap **Add Stop**, then add stops to your trip as you would in Guidance Mode. To pick a stop from the map, see p. 46.



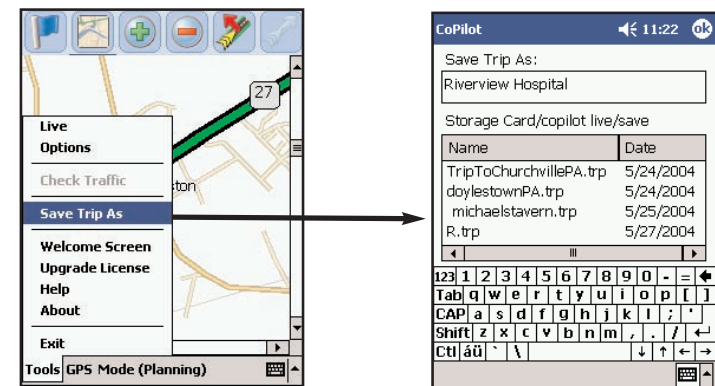
3. Note that you should enter stops in reverse order (destination first, origin last) — the first stop (0) on the Plan Trip itinerary is the starting point of your trip. Tap **Get Directions** when you have entered all your stops.
4. Now you'll see your route on the map. You can tap the zoom buttons on the toolbar to zoom your view in and out.



5. To see driving directions, tap the **View** button, then tap the **Itinerary** button in the nested toolbar that pops up.
6. Your trip, along with the trip itinerary, can be saved and then opened later in Guidance Mode (see below).

Saving and Loading Trip Itineraries

To save a trip itinerary you put together in Planning or Guidance Mode, select **Save Trip As** from the pop-up **Tools** menu. Give the trip a name and tap **OK**. At a later time you can open the trip in Guidance Mode using the Saved Trip option in the *Select Stop* screen..

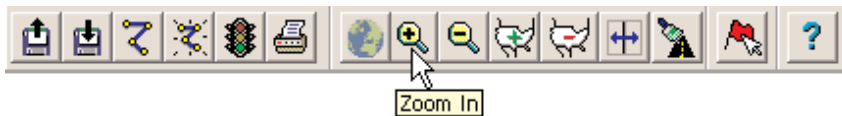


Trip Planning on Your Desktop

You can use CoPilot's desktop functions to map out routes and print maps and driving directions before getting on the road. Desktop trip planning is an additional feature of CoPilot that is in no way connected to using your Pocket PC for route guidance.

On the following pages you will find brief descriptions of CoPilot's desktop trip planning capabilities. For more detailed descriptions, open CoPilot Help from the desktop application (**Help** menu > **Help Contents and Search**, or click the **Help** button on the toolbar). Go to **Desktop Trip Planning** in the **Contents** tab.

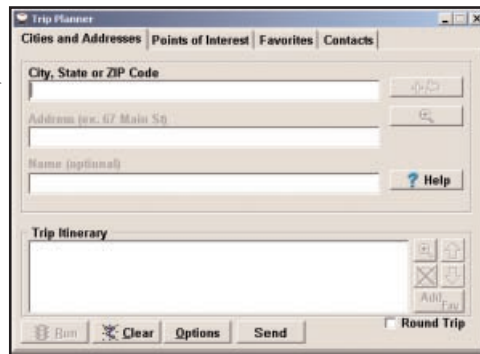
To begin planning a trip on your desktop, click the **Planning** icon in the sidebar to the left of the map. Using the drop-down menus you can select from a number of planning features. Many of these features can also be accessed from the toolbar. Place your cursor on any toolbar button without clicking to see what it does.



New Trip



New Trip button or **New Trip** in the **File** menu.

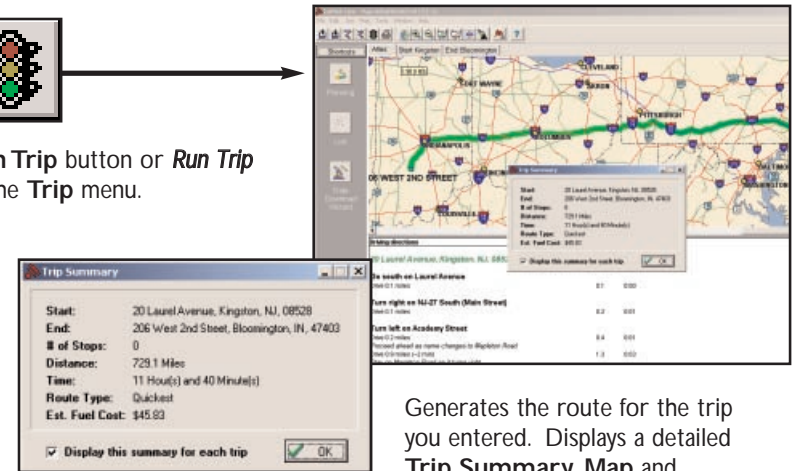


Opens the *Trip Planner* window where you can create a new trip, arrange the order of stops on your route, add or edit **Favorites** (these can be downloaded to your Pocket PC along with map data), search for **Points of Interest**, or use your **Contacts** database to add stops to your trip. Click **Run** to receive driving directions and a map.

Run Trip



Run Trip button or **Run Trip** in the **Trip** menu.

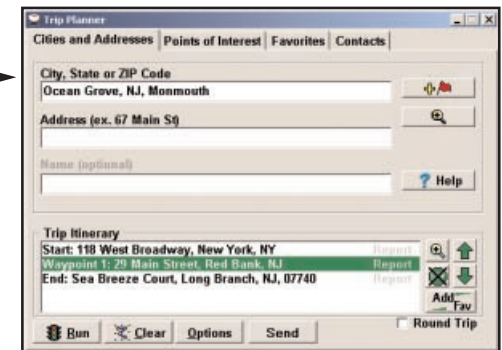


Generates the route for the trip you entered. Displays a detailed **Trip Summary**, **Map** and **Driving Directions**.

Edit Trip

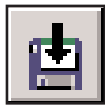


Edit Trip button or **Edit Trip** in the **Trip** menu.

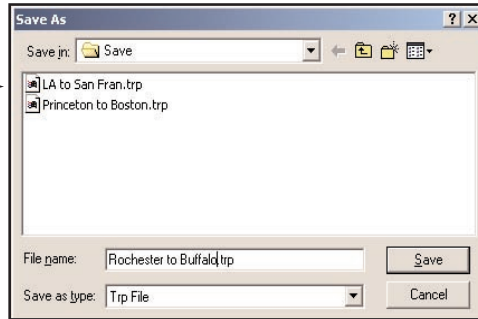


Takes you back to the *Trip Planner* window where you can edit stops on your existing trip or click **Clear** to delete all stops and begin a new trip.

Save Trip



Save Trip button or **Save Trip.../Save Trip As...** in the File menu.

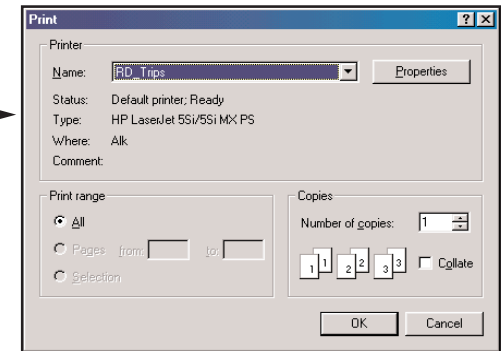


Opens a standard Windows dialog where you can name your trip and save it to your hard drive either before or after running it in the *Trip Planner*.

Print



Print button or **Print...** in the File menu.

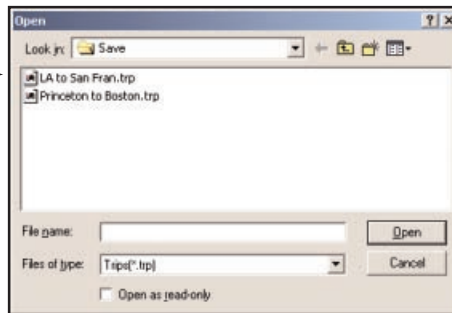


Takes you to the standard Windows **Print** options for printing the active window that contains your map or driving directions. Activate the map or directions by clicking on it or selecting it in the **Window** menu. Select **Print TravPak...** from the **File** menu to print driving directions, an overview map, and a zoomed map of each stop.

Open Trip



Open Trip button or **Open Trip...** in the File menu.

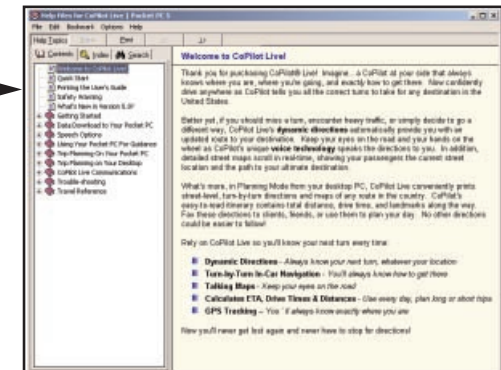


Opens a standard Windows dialog where you can select a saved trip to open in the *Trip Planner* window.

Help



Help button or **Help Contents and Search** in the Help menu.



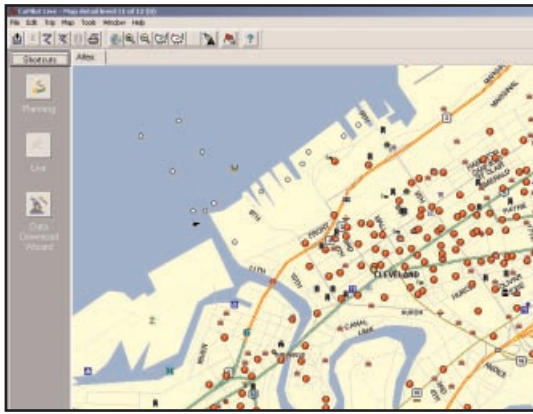
Opens the CoPilot Help window with the **Contents** tab open on the left. From here you can search for help by topic, use the **Index**, or **Search** for a word or phrase.

Zoom In



Zoom In button or **Zoom In** in the **Map** menu.

Each time you click this button, your view will be zoomed in by one increment. The zoom level is shown in the title bar of the map window.

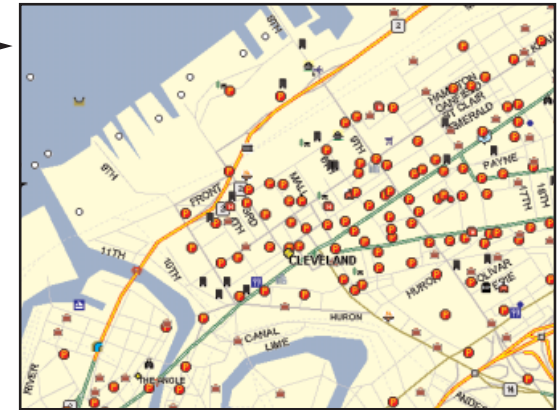


More Detail



More Detail button or **Detail > Show More** in the **Map** menu.

Click once to increase the level of detail you see on the map by one increment without changing the zoom level.

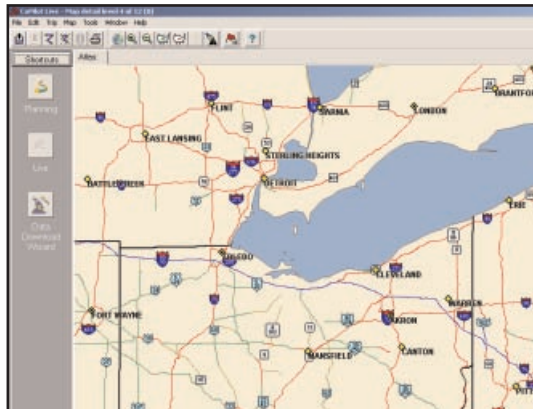


Zoom Out



Zoom Out button or **Zoom Out** in the **Map** menu.

Each time you click this button, your view will be zoomed out by one increment. The zoom level is shown in the title bar of the map window.



Less Detail

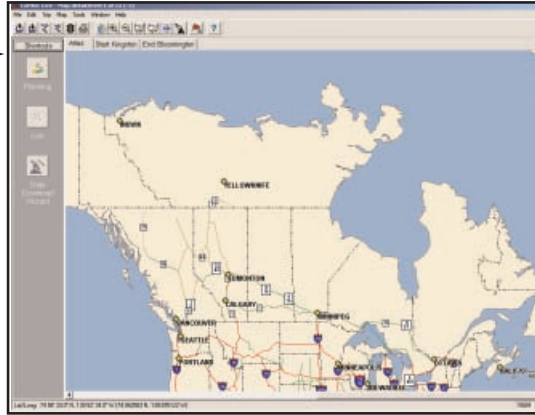
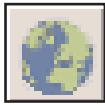


Less Detail button or **Detail > Show Less** in the **Map** menu.

Click once to decrease the level of detail you see on the map by one increment without changing the zoom level.

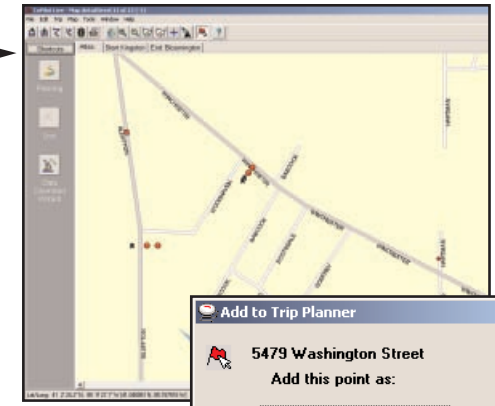


Zoom To Region

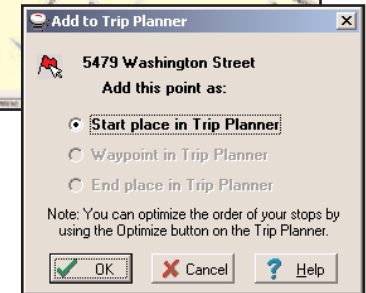


Zoom to Region button or **Zoom Region** in the **Map** menu. This function allows you to zoom your map view to a specific area. Choices in the sub-menu will depend on which CoPilot data region(s) were purchased.

Pick Stops

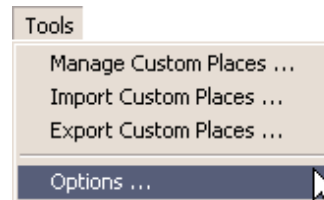


To turn on *Pick Stop* mode, click the **Pick Stops** button or right-click on the map and select **Pick Stops**. Then click on any point on the map to enter it as a stop. The map view must be zoomed in to level 11 or 12. At lower zoom levels, keep clicking on the map until level 11 is reached (level is displayed in the CoPilot window title bar).

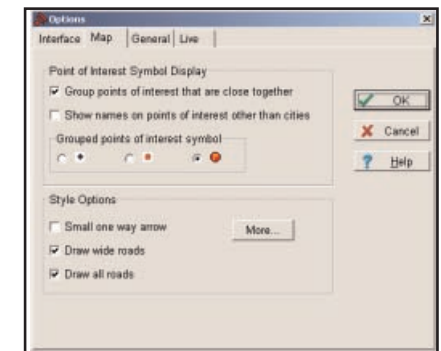


In the dialog that opens, you can choose to enter the point as a start place, a waypoint, or a destination.

Options (Tools Menu)

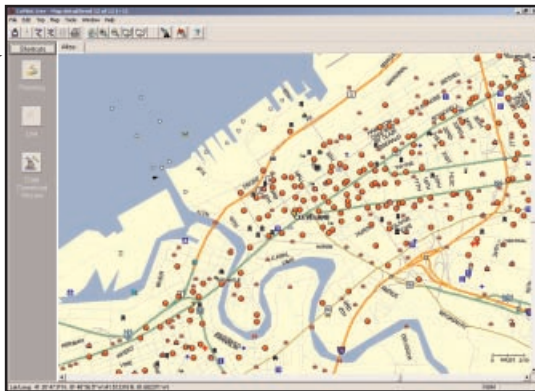


Select **Options** from the drop-down **Tools** menu.



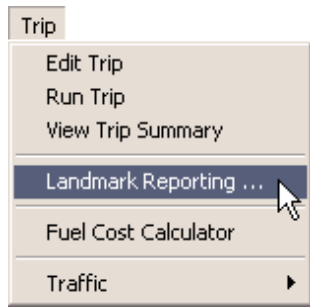
In this window you can change the way you view your desktop maps and various application settings. For example, in the **General** tab you can choose the measure of distance (miles vs. kilometers), and the **Map** tab lets you adjust the appearance of features on the map such as roads and points of interest.

Refresh Map

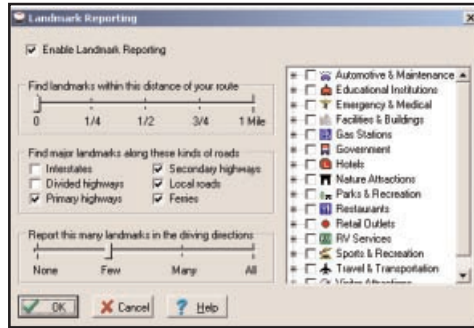


Refresh Map button or **Refresh Map** in the **Map** menu. When scrolling through a map you may notice it takes a few seconds for all the data to catch up. This function will snap the entire screen to a new map.

Landmark Reporting

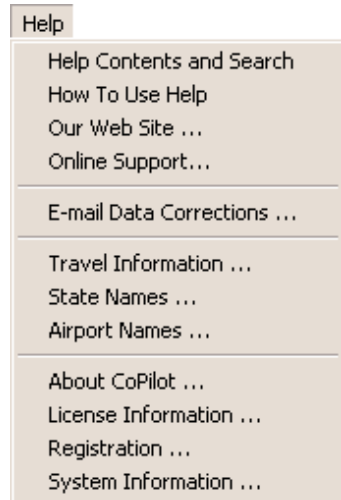


Select **Landmark Reporting** from the drop-down **Trip** menu.



In this window you can control how many Landmarks CoPilot points out when generating driving directions.

Help Menu



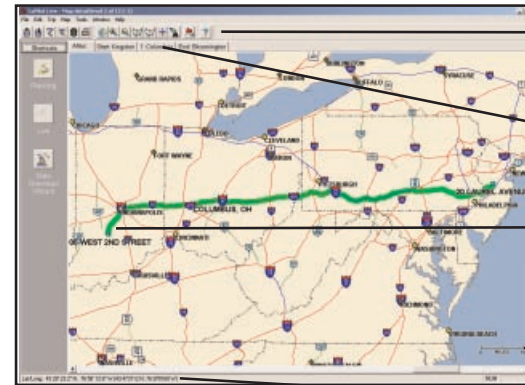
Use the drop-down **Help** menu to access CoPilot Help for assistance with all aspects of the software and to quickly access ALK's web site.

(For North America only) In this menu you will also find helpful travel links and a link to the ALK data corrections e-mail address. With street-level data changing every day, you may discover some errors. Please drop us an e-mail. With your help we will be able to improve our map data with every update.

Reference: CoPilot on Your Desktop

The following is a guide to the main screens you will see as you use CoPilot on your desktop/laptop computer for trip planning.

Map Window



Menus and toolbar buttons to access all of CoPilot's desktop features.

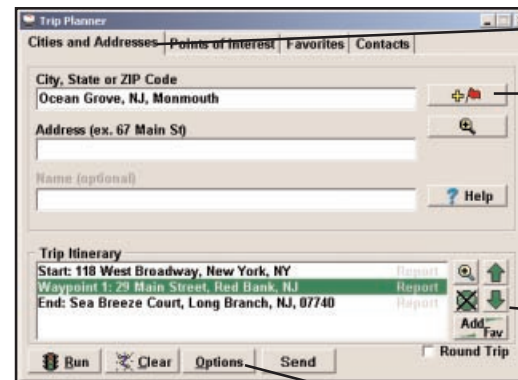
Click on a tab to frame any stop on your route.

Map of area around your destination. **Zoom in and move your cursor over a street to view its name.**

Distance Scale.

Latitude/longitude position of your cursor on the map.

Trip Planner Window (Cities & Addresses)



Click **Cities and Addresses**.

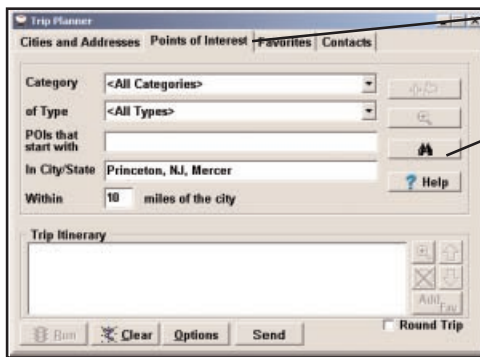
Enter city name/state, or postal code. Enter an address (optional), with the option to add a **Name** to it. Click the **Add Stop** button to add the stop to the Itinerary.



Move stops up or down on your *Itinerary*, zoom to stop location on the map, delete a stop, or add a favorite.

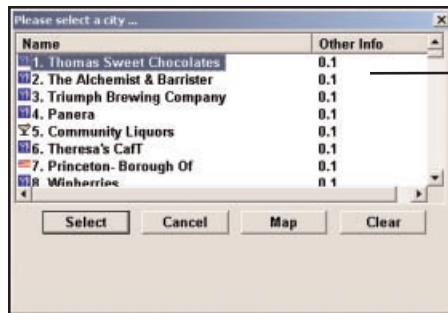
See p. 77 for routing options.

Trip Planner Window (Points of Interest)



Click **Points of Interest** tab.

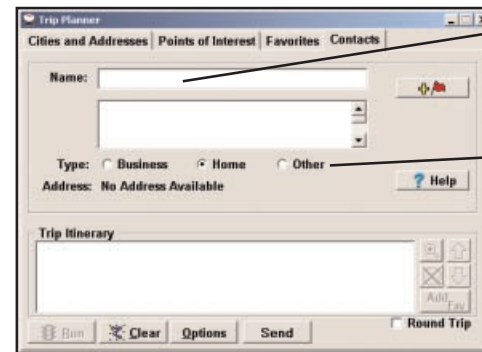
Enter a city or postal code in which you would like to search, a radius within which to search, choose a **category** and **type** from the drop-down menu, and **click the binoculars to search**. You can also enter a name to narrow down the search in the **POIs that start with** box.



You will be given a list of matches to your search criteria. Highlight your selection and click **Select**. Click the **Add Stop** button to add it to your Itinerary.



Trip Planner Window (Contacts)



Enter a person's first or last name and hit <Enter>. CoPilot will search your Contacts database for matches.

Select the Contacts address type (as defined in Outlook) to get the appropriate address, then click the **Add Stop** button to add it to your Itinerary.



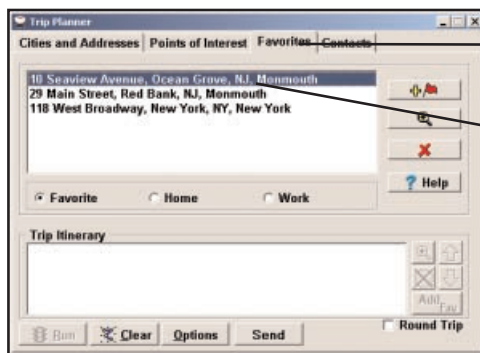
Driving Directions and Map (Split Screen)

When you click **Run** in the Trip Planner window, your route will be calculated and driving directions and a map will display. To print either one, click on it and choose **Print** from the **File** menu. To print directions plus all map views, choose **TravPak Printing**.

Atlas, Start, and End tabs will zoom to the map view of those places respectively.

Driving directions give you turn-by-turn instructions including ramps and exits, and distance and time between turns.

Trip Planner Window (Favorites)

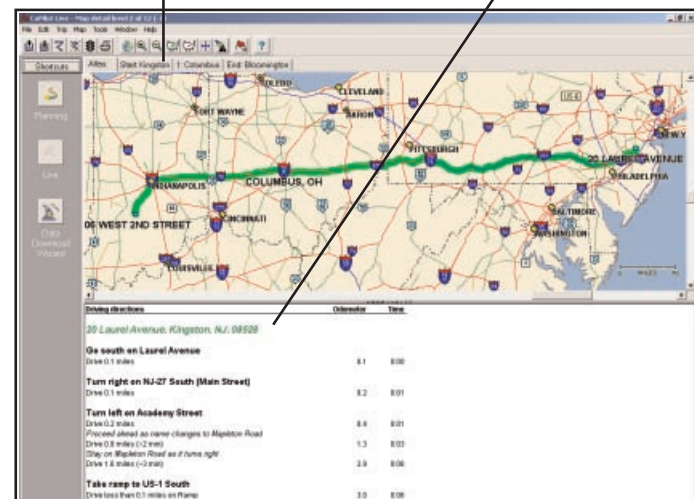


Select **Favorites** tab.

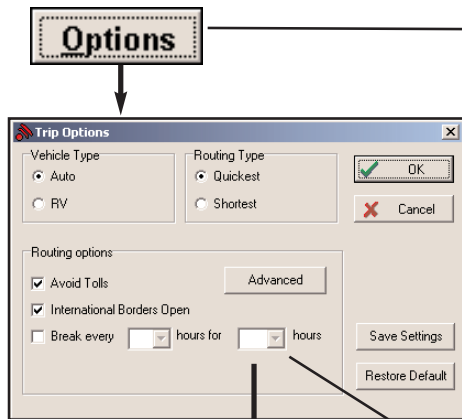
Highlight a selection from your list of places by clicking on it. You can zoom to it on the map, or **Delete** it from the list using the buttons to the right. Click the **Add Stop** button to add a favorite to your Itinerary.



See p. 77 for routing options.

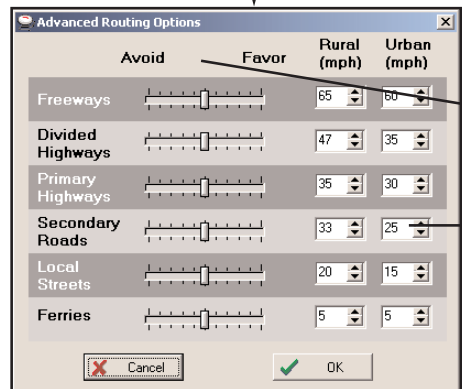


Routing Options



Click the **Options** button in the Trip Planner window to access CoPilot routing options.

Auto and **Quickest** is the default setting, and provides the quickest routing for automobiles based on practical considerations such as road quality, terrain, and urban/ rural classifications. **RV** routing favors major roads and avoids sharp turns and U-turns where possible.

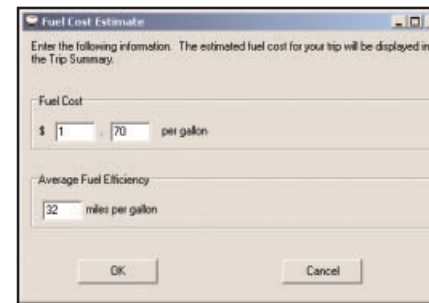


Click **Advanced** to set general road preferences.

Drag the sliding bars to the left or right to avoid or favor each road type.

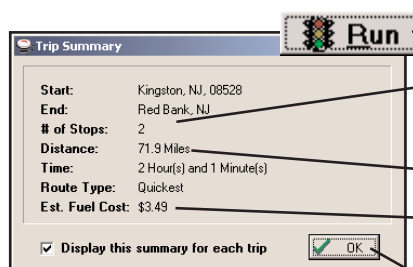
Set the road speeds CoPilot uses in its route calculations for each type of road by either typing or clicking the up and down arrows under **Rural** and **Urban** for each road type.

Fuel Cost Calculator



To calculate an estimate of your fuel costs for a trip, select **Fuel Cost Calculator** from the **Trip** menu before you run your route. Fill in the average cost per gallon of fuel that you expect to pay, and the distance per gallon you can expect to get in your vehicle. Click **OK**, then run your trip. A fuel cost estimate based on what you entered will be calculated and shown in the Trip Summary that CoPilot creates for every trip you run.

Trip Summary



Select **Run** in the Trip Planner window to run the trip.

The *Trip Summary* will show start and end places, and the number of stops in between them.

Total distance and time for trip.

Estimated fuel cost for your trip based on entries in the *Fuel Cost Calculator* (**Trip** menu).

Click **OK** to view map and driving directions.

CoPilot Live Communications

CoPilot Live allows you to maintain two-way communication with drivers who are using CoPilot and to actually see where they are currently located. You can do this using a computer with CoPilot installed or from our CoPilot Live web page.

Using this CoPilot Live functionality requires the following:

- 1) **If you want to track and message other drivers:** An Internet connection on the computer you have CoPilot installed on, or access to our CoPilot Live web page through a normal web browser.
- 2) **If you want others to track and send messages to you:** CoPilot Live must be running on your Pocket PC in your vehicle. You must have a wireless Internet connection.

CoPilot Live Web Page

As a CoPilot user, you can create an account on our website that allows you to join the CoPilot Live Network. Then your family, friends, and coworkers can "see" you and communicate with you anywhere in the world! Through the website you can do all of the following:

- 1) Send text messages to CoPilot users using large, customizable, one-touch response buttons to ensure driver safety.
- 2) Real-time tracking of other people who are on the road. See their current location, destination, ETA and much more.
- 3) Send itinerary updates including new stops and revised destinations — you can coordinate changes in plans with someone who's on the road right now without forcing them to pull over and enter new information.
- 4) Text-to-Speech enhances safety for all of your communications — text messages and itinerary updates are spoken out loud when you send them, keeping the recipient focused on the road ahead.
- 5) Create an online account from where you can send temporary or permanent tracking numbers to friends and family. You can also create and join groups with other CoPilot users and manage all your account preferences.

Since you're the one who owns CoPilot, it's likely that your friends and family will be the ones logging onto the CoPilot Live web site to communicate with you. However, setting up your own account allows you to distribute tracking numbers and have tighter control of the security so you know who has access to you while you're on the road.

For more information and complete details, visit the CoPilot Live Tracking Website at: <http://live.alk.com>.

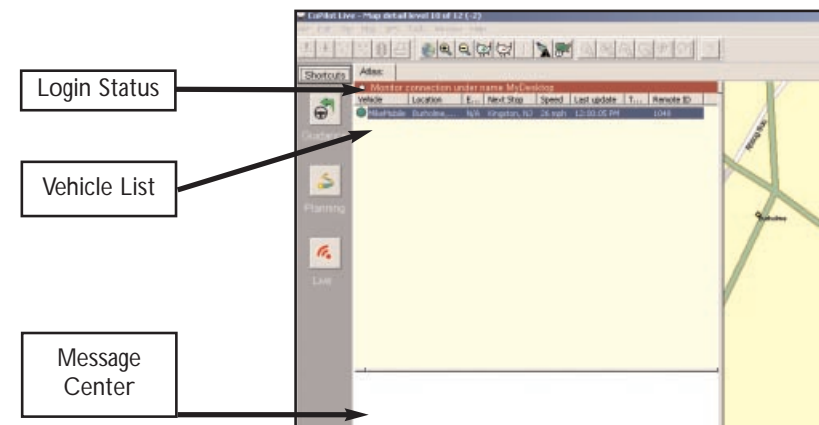
On the following pages you'll see how you can communicate with someone on the road from within CoPilot (the *Live Mode* sections) and what it's like to be the driver using CoPilot when someone else is communicating with you (the *Driving with Live* sections). To set up your Pocket PC for tracking/messaging from within CoPilot or on the web, see *Driving with Live - Pocket PC Setup*, p. 84-86.

Live Mode - Overview

Although the CoPilot Live web page is the best way to communicate with people who are on the road, you can also use Live Mode from within CoPilot on your desktop as shown in the following *Live Mode* sections.

In Planning Mode click on the **Live** icon on the sidebar to the left of the map. The upper portion of the new pane that opens is the **Vehicle List**. Your connection to the CoPilot Live network is displayed above the Vehicle List. Remember that you must have an Internet connection to get onto the CoPilot Live network.

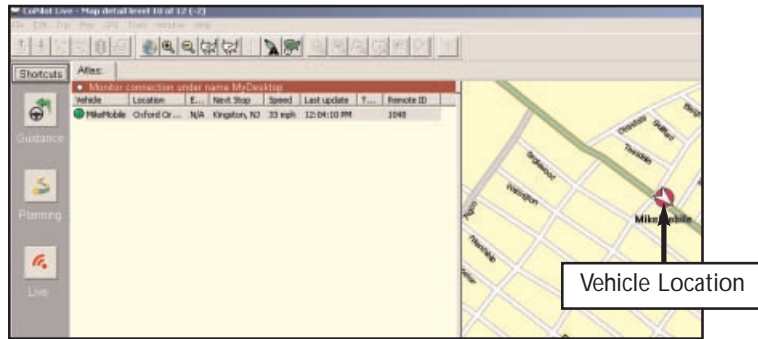
The Screen Name of the driver is displayed on the Vehicle List, with columns for the vehicle's next stop, ETA, speed, location, and time of last update. To see all columns, expand the pane (place the cursor on the right edge until it becomes an arrow and drag).



Below the Vehicle List is the **Message Center**. The text of sent and received messages will appear here.

NOTE: All of CoPilot Live's communications are done in real-time. This means information is only transferred when you and the person in his vehicle are using CoPilot Live at the same time. In this sense CoPilot Live communication is similar to using a telephone — communication only occurs when both parties are on at the same time. ALK does not actively log driver's location information, nor do we use this information for any purpose other than to transfer it between authorized users.

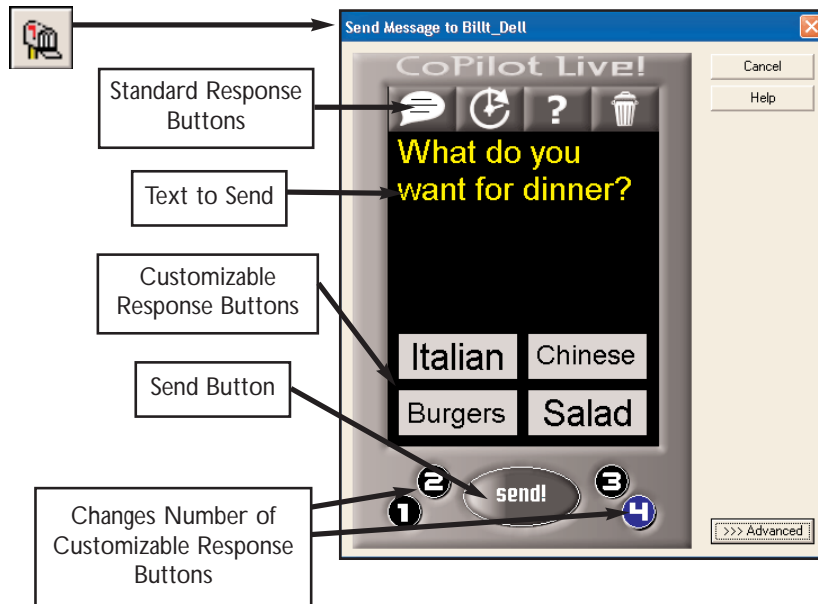
Live Mode - Automatic Vehicle Location (AVL)



In Live Mode on your desktop you can track the location of the driver. Double-clicking the vehicle in the *Vehicle List* will center the map on the driver's last reported location. The vehicle location updates at an interval specified by the driver on his Pocket PC (see *Driving with Live — Pocket PC Setup*, p. 84) as long as both you and the driver are running CoPilot Live.

Live Mode - Send/Receive Messages

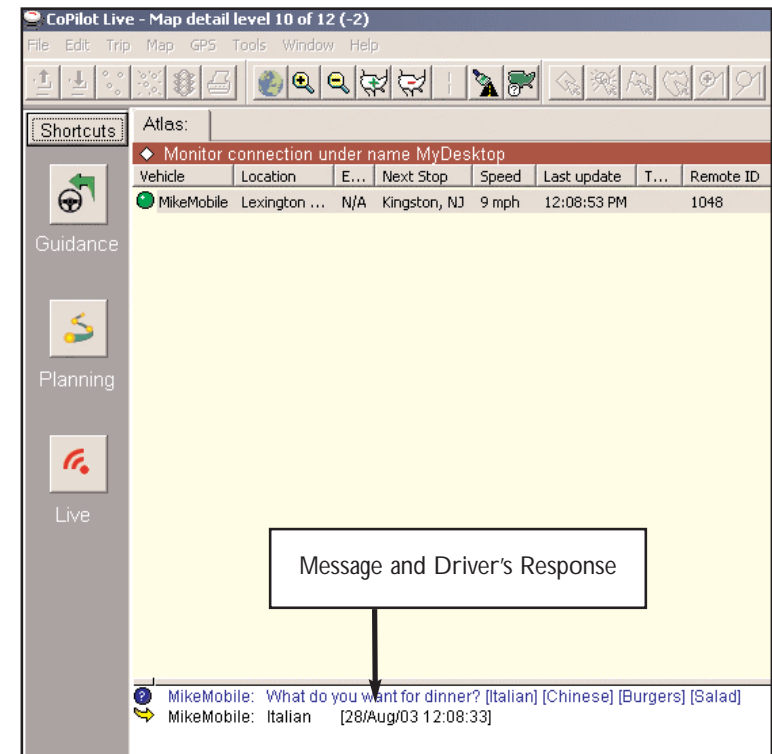
To send a message to the driver, click the **Send Message** button on the toolbar or right click on the vehicle and select **Send Message** from the pop-up window.



Click your cursor in the space just below the **Standard Response Buttons**, and begin typing. The Standard Response Buttons are included in every message and are described in detail in *Driving with Live - Receive/Respond To Messages* (p. 87). You have complete control over the **Customizable Response Buttons**:

- 1) Choose to display 1-4 buttons by clicking the corresponding number at the bottom of the screen.
- 2) Change the text of each button — the driver will see whatever text you enter and when the driver responds, the text of the button will be sent back to you.

Once you have typed your message and specified your Customizable Response Buttons, click the **Send** button to send your message to the driver. When the driver responds to your message, the response is displayed in the Message Center:



Advanced:

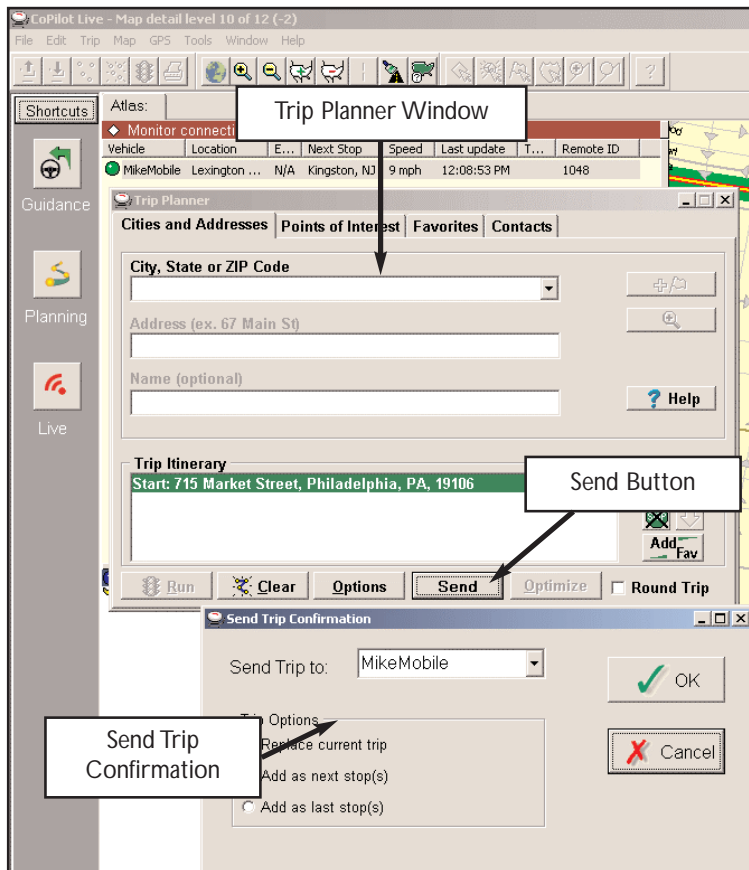
Clicking on the **Advanced** tab of the Send Message window will expand the view. From the Advanced view you can save frequently used message text and button layouts that you can recall for future messages.

Live Mode - Send Trip Itinerary Updates

To send a Trip Itinerary Update to the driver, click the **New Trip** button on the toolbar and create a trip itinerary in the Trip Planner window just as you would in Planning Mode (see p. 65).



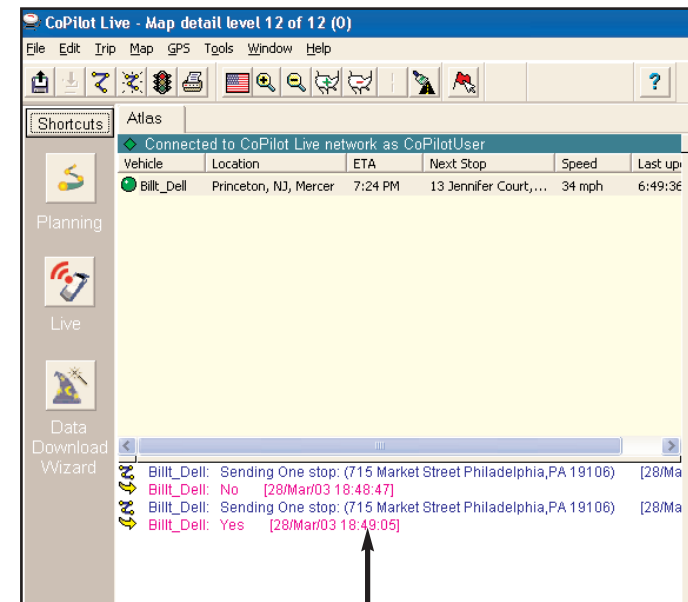
Then click the **Send** button:



In the **Send Trip Confirmation** window you can specify whether you want the new trip itinerary to replace the driver's existing trip, add as the next stop(s) in the driver's current itinerary, or add as the last stop(s) in the driver's current itinerary. Click **OK** to send the trip itinerary.

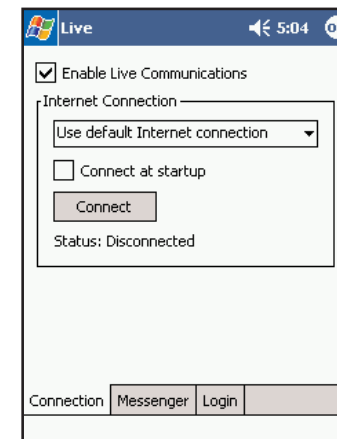
NOTE: CoPilot Live always uses the driver's current location as the start point for giving route guidance.

When the driver responds to your trip itinerary update, the response is displayed in the Message Center:



Send Trip and Driver's Response

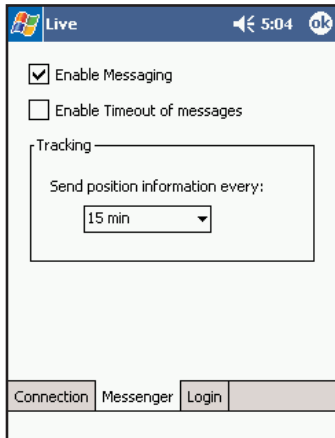
Driving with Live - Pocket PC Setup



The previous sections have detailed how you can communicate with someone else who's on the road from within the CoPilot Live program. The following *Driving with Live* sections will describe how it looks when you're the one on the road.

To set up your Pocket PC for tracking and messaging, you (the driver) must first enable this functionality using the **Tools** menu.

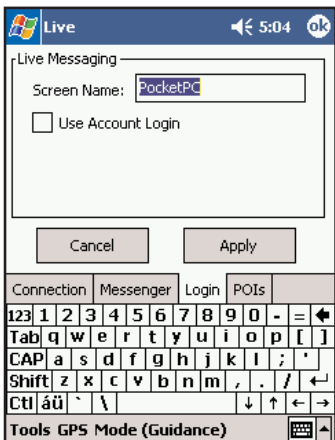
1. Tap **Tools** at the bottom of the screen, then **Live**. Then check **Enable Live Communications** to connect to the Live Network and enable tracking.



2. Tap the **Messenger** tab and check **Enable Messaging** to turn messaging on so that messages can be sent and received.

If you would like each message you receive to disappear from the screen and be placed in a queue after a certain amount of time, check **Enable Timeout of Messages**. The time it takes for a message to be queued is set in Planning Mode — go to **Tools menu > Options > Live**. By default, CoPilot will wait 30 seconds. See *Receive/Respond to Messages*, p. 87, for retrieval of queued messages.

In this screen you can also indicate how often your current position should be sent to the Live Network. Depending on the plan offered by your wireless data service provider, sending less data at infrequent intervals will be more cost-effective.



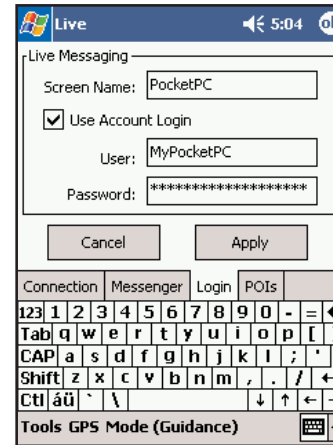
3. Tap on the **Login** tab to enter or change your screen name as it appears on the home/office PC or CoPilot Live Web page. Click **Apply** after making your entry.

You are now set up for messaging and tracking from within CoPilot in Live Mode. Your screen name can be changed as many times as you like.

Pocket PC Setup for Live Web Tracking

If you would like access to CoPilot's Live Network on the Web so that your friends, family, and co-workers can message and track you from anywhere in the world, you'll need to set up your Pocket PC for web tracking. Once you do this setup, you won't be able to return to using the CoPilot application (Live Mode) in this way, but you'll gain the additional security features and functionality provided with the CoPilot Live Network.

The setup for the web is simple. You (the driver) must first create a login account using the CoPilot Live Web login page. Once you have submitted a User Name and Password on the web, you then enter the same user name and password — once only — within the CoPilot application to complete the setup.



1. Go to the CoPilot Live Web login page at <http://live.alk.com>. Click **Create a new account**, and enter all the required information including a **User Name** and **Password**.

2. Open CoPilot on your Pocket PC. Tap the **Tools menu > Live**. Follow steps 1-3 on p. 84-85 to enable messaging and tracking.

3. In the **Login** tab, enter a **Screen Name** that will identify you to the person on the other end for messaging and tracking.

4. Check **Use Account Login**, then enter the *same* User Name and Password you used to create your account on the web (Step 1) and click **Apply**.

You are now set up for messaging and tracking on the web. Your screen name, user name, and/or password can be changed as many times as you like. However, you'll need to change your user name or password on the Live Web page *before* changing them in CoPilot. This is *not* required for your screen name.



When you are the driver and a message is sent to you, CoPilot displays it on top of all other windows. CoPilot's text-to-speech engine will speak the text of the message out loud when the message is received.

If you tap the **Defer** button (see below) or do not respond within the time limit you set up, the message will be put in a queue and the **Information** button in the lower right corner of the CoPilot guidance screen will turn from gray to red. You'll need to tap the Information button to read the message. If other messages have been queued behind it, the messages will appear in the order they were sent.



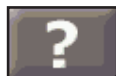
On the top are the four **Standard Response Buttons** which appear on every message (shown below). You can also tap one of the **Customizable Response Buttons** at the bottom of the screen that the message sender has included. The text on the button is sent back.



Speak Message: CoPilot Live's text-to-speech engine speaks the text of the message



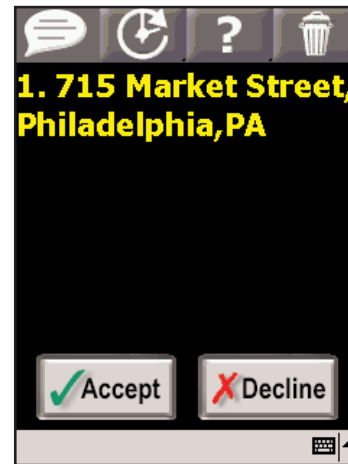
Defer Message: Defers the message, which will reappear later. Useful when you need to concentrate on the turn instructions and the road.



More Information: Sends a response back that you need more information.



Delete Message: Deletes the message-notice of the delete is sent back.



When you are the driver and a Trip Itinerary Update is sent to you, CoPilot Live displays it on top of all other windows. If you have CoPilot Live's text-to-speech engine installed, you will hear the itinerary updates spoken out loud.

The four **Standard Response Buttons** appear (see p. 87).

You can **Accept** or **Decline** the change to your trip itinerary. If you accept the change, CoPilot Live will automatically start giving route guidance using the new itinerary.

About GPS Technology

The Global Positioning System (GPS), developed by the U.S. Department of Defense, is a constellation of 24 satellites that orbit the Earth twice daily. Each satellite contains an atomic clock that is accurate to the nanosecond, and constantly emitting radio waves toward Earth.

GPS sensors (hardware devices for receiving data) can receive these signals from the satellites, and using their own internal clock can calculate the amount of time it has taken for the signal to be received. GPS relies on the fact that radio waves travel at the speed of light to calculate distances, and the exact location of the sensor is figured by combining the data received from four satellites.

Using the data from these four satellites, GPS is able to give you the latitude, longitude and elevation of your present location, and also your road speed and direction of travel on a route. Given the right conditions, a GPS sensor can identify your geographic position anywhere in the world within a matter of a few meters.

How CoPilot Uses GPS

CoPilot uses the GPS positional data that it receives from the hardware unit you place on your dashboard to display your current position on a map as you drive. This is called "tracking". CoPilot also uses the GPS data it receives to guide you along your planned route if you enter a destination on your Pocket PC. CoPilot guides you with audible prompts as you drive as well as on-screen directions.

Tracking will begin automatically when you have satellite reception. In order to get route guidance, you have to enter a destination on your Pocket PC. Tracking may also be used without receiving guidance instructions when you're in Navigating Mode. In this case, you'll see your trip tracked on the map on your Pocket PC as you drive, but you won't see a highlighted route on the map and you won't be given driving directions.

GPS Accuracy

The GPS signal CoPilot receives from the constellation of satellites has a rated accuracy of within 5 - 10 meters. This means that 95% of the time the reported location is within 15 - 30 feet of your exact position. CoPilot takes this location information and enhances it further by "snapping" it to our street and highway network. Occasionally, CoPilot will place you on the wrong road. If this occurs, keep driving and CoPilot will automatically correct itself and find your proper position.

At times, CoPilot's GPS tracking will be less accurate or fail to work at all because the unit is unable to receive satellite signals. Heavy foliage, tall buildings, or any other structures obstructing communications will interfere with CoPilot's

ability to track your location. Like your car radio, GPS tracking can also be affected by weather conditions if severe. CoPilot will continue tracking as soon as adequate signals are available. Despite these limitations, you can expect CoPilot to provide you with useable and accurate information most of the time. CoPilot will alert you if accurate information is unavailable.

Data Corrections

The ALK map database undergoes constant revision as we strive to provide you with the highest quality product. Revisions include the addition of new roads, roadway upgrades, and the addition of new streets and addresses. If you encounter missing or inaccurate map data, please contact us so that we can include it in our updates.

The single best way to convey data corrections is through the submission of your GPS tracks-every time CoPilot is on it records a GPS track that contains position information that ALK uses to realign existing roads, fix one-way designations and add new roads.

To submit GPS tracks from within CoPilot:

1. Connect you Pocket PC to your desktop via Activesync.
2. Make sure you have Internet access from your desktop.
3. Open CoPilot on your desktop.
4. From the top toolbar select GPS > Submit GPS Tracks.
5. CoPilot pulls the GPS tracks from your Pocket PC and sends them to ALK electronically.

To submit GPS tracks by E-mail:

On your Pocket PC your GPS tracks (files that end with .gps) are stored in your My Documents > gpstracks folder.

- ♦ If your map data is loaded onto a storage card, your tracks are stored in the My Documents > gpstracks folder on that storage card.
- ♦ If your map data is loaded onto your device memory, your tracks are stored in the My Documents > gpstracks folder on your device.

1. Copy all GPS tracks to your desktop
2. Send them as an email attachment to data@alk.com

Specific Data Notes

Electronic Submission:

You can use our built-in Data Corrections form to supplement any GPS tracks you submit. This form has space to make notes regarding specific problems with map data.

1. Make sure your desktop is connected to the Internet

2. Open CoPilot on your desktop
3. From the top toolbar select Help > E-mail Data Corrections
4. Complete the form and click Send

Contact ALK by Mail/Fax:

You also have the option to write out any data corrections and/or create a CD with GPS tracks and mail/fax them to:

ALK Technologies
 Attn: Data Corrections
 1000 Herrontown Road · Princeton, NJ · 08540 · USA
 Fax: 609-252-8166 (North America only)
 E-mail: data@alk.com** (North America only)

Trouble-shooting

Why can't I get a satellite reading the first time I use Pocket CoPilot?

The first time the GPS receiver is used it may take approximately 5 minutes to acquire a fix (but may take as long as 15 minutes). You can minimize this time by remaining stationary and positioning the GPS receiver so that it has a clear view of the southern sky. Once initialized, the unit should acquire satellite signals in 40 seconds or less in the future.

How can I speed up satellite acquisition?

Be sure that the GPS receiver has an unobstructed view of the sky. Trees, buildings, and other obstacles are capable of blocking the satellite signals.

In the drive screen on my Pocket PC I am receiving turn-by-turn instructions in the black box, but my CoPilot is not speaking. Why is that?

CoPilot provides voice prompts each time you come up on your next turn. In order to hear these prompts you need to be sure the volume on your Pocket PC is turned all the way up. On the Pocket PC in the **Start** menu go to **Settings**, and click on **Sounds & Reminders**. Under **System volume** move the slide bar all the way to the right. Or use your Pocket PC's keypad to adjust the volume. Tap up to increase the volume, tap down to decrease it.

From within CoPilot on your Pocket PC, you can also select **Options** in the **Tools** menu, then tap the **Guidance** tab and be sure that **Amplify Speech Volume** is checked.

GPS PROBLEMS

If you are not getting a GPS signal please check the following:

1. In the **GPS** menu, make sure there is a check mark next to **Receiving**.
2. If not, tap on **Receiving** to turn it on. If you cannot place a check mark next to receiving by tapping on it, try using your Pocket

PC's Reset button (located on the bottom or back of the device) while CoPilot is open and the GPS unit is connected.

3. After you hit the Reset button, open the program again and make sure **Receiving** is checked in the **GPS** menu. Your GPS unit should now acquire a satellite fix.

Also be aware that heavy foliage, tall buildings, or any other structures obstructing communications will interfere with CoPilot's ability to track your location. Like your car radio, GPS tracking can also be affected by weather conditions if severe. CoPilot will continue tracking as soon as adequate signals are available.

Using Help Files

CoPilot provides extensive Help Files, available on your desktop/laptop and your Pocket PC, to guide you through the program as you use it.

To access Help on your Pocket PC, once the CoPilot application is launched, tap the **Tools** pop-up menu at the bottom of the screen and select **Help**.

In the desktop application, click on the **Help** button in any window to open a Help topic that describes how to use that window. For example, if you're entering a stop in the *Trip Planner* window, the Help button will open at the topic *Entering Additional Stops*. From there, you can navigate through other topics, or do a search for information using the **Search** tab.

Another way to access the Help files on your desktop is through the **Help** menu. **Contents and Search** will open Help with the **Contents** tab displaying the main topics available. **Topic Search** opens the **Search** tab, where you can do a word search.

Software Registration

Registered users are entitled to technical support, discounts on new versions of CoPilot, new product information, and software enhancements.

NOTE: Software activation does NOT register your software, they are two separate processes.

In North America: You can register your software at www.alk.com (click "Support Center") or call ALK® Technologies at **609-252-8191** (M-F, 9:00 AM - 5:00 PM EST).

In Europe: Go to www.alk.eu.com and click "Support Center".

In Australia: Go to www.travroute.com.au and click "Support".

ALK Technologies has a one-per-licensing non-transferable registration. Unauthorized purchases from private owners are not supported or under warranty, and special pricing does not apply.

Technical Support

After registering your software (see p. 92), you're entitled to technical support and discounts on new versions of CoPilot. Check out ALK's web site for technical support documentation and posted answers to common questions. If the web site does not provide an answer to your question, technical support for registered users is available during standard business hours (9:00 am-5:00pm Monday-Friday). You should be at your computer and have your **Product Key Code** available when you contact us (your Product Key Code can be found on the front cover of the printed *Quick Start* that came with the product).

Please be sure to reach us **using the contact information for your region** shown below. We are sorry, but our support staff in ALK's regional offices cannot respond to requests for assistance outside the areas they serve.

North America - Web: www.alk.com, E-mail: cpsupport@alk.com,
Fax: 609-252-8166, Phone: 888-872-8768

Europe - Web: www.alk.eu.com, E-mail: uksupport@alk.eu.com,
Postal: Suite 8, 4 Bloomsbury Square, London WC1A 2RP, UK
Phone: +44 (0)207 404 4222

Australia - Web: www.travroute.com.au/support.html,
E-mail: support@travroute.com.au, Phone: 03-9855-1498

Return Policy

ALK's 30-Day Money Back Guarantee and Return Policy

We know you'll love our products. If, however, you are not satisfied with any CoPilot product you purchase directly from ALK, you may return it within 30 days for a refund of the price paid (excludes shipping and handling).

For your return to be accepted:

- You must have purchased directly from ALK. ALK products purchased at retail locations are only refundable through the retailer under the retailer's terms and conditions. You will have to contact the individual retailer for their specific terms and conditions.
- The postmark date on the package must be within 30 days of the original product ship date.
- If your product contains software, and you have activated the software, you must first deactivate the software and provide to ALK the deactivation code (you must activate our software to use it for more than a few days' time).

If your product contains a GPS receiver and it is scratched or otherwise determined to be non-saleable by ALK, we will deduct a \$50 usage fee from the refund amount.

To return your product, please follow the instructions below:

1. Fill out the return slip that came with your product or create your own return slip that includes the following information: your name, address, phone number, date of purchase, e-mail address, reason for return, and (if applicable) your deactivation code.
2. Repackage your entire product (CDs, GPS receiver, etc.) and include the return slip inside the package.
3. Send the package to:
ALK Technologies
Attn: CoPilot Returns
1000 Herrontown Road
Princeton, NJ 08540

For your protection, please use UPS, FedEx, or Insured Parcel Post for shipment of returned products. ALK is not responsible for loss or damage during shipping.

Your refund will appear on your credit card statement within 4-6 weeks after ALK's receipt of the returned product.

CoPilot® End-User License Agreement

NOTE: On the following pages there are three separate license agreements for users of **North American, European, and Australian Data.**

THIS IS A LEGAL AGREEMENT BETWEEN YOU, THE USER (either an individual or an entity), AND ALK TECHNOLOGIES, INC. ("ALK"). IF YOU DO NOT AGREE TO THE TERMS OF THIS LICENSE, DO NOT OPEN THE PACKAGE. Promptly return the unopened CD-ROM package and accompanying materials (including written materials and containers) to the dealer from which you obtained them for a full refund.

OPENING THE PACKAGE OR USING THE ENCLOSED SOFTWARE INDICATES YOUR ACCEPTANCE OF THE TERMS OF THIS LICENSE.

ALK®Technologies, Inc. LICENSE AGREEMENT CoPilot | Pocket PC 5 with NORTH AMERICAN DATA LICENSES: 1 User

1. Grant of License:

This ALK License Agreement ("License") is a single-user, non-exclusive, non-transferable license agreement and not an agreement for sale. ALK hereby licenses the Help Files and CD-ROM software identified above (collectively, "the Software") to you under the following terms and conditions.

The Software may not be loaded onto a network of any type. You may use the Software on any compatible personal computer, provided you use it on only one computer at a time. The Software is "in use" on a computer when it is loaded into the temporary memory (i.e., RAM) or installed into the permanent memory (e.g., hard disk, CD-ROM, or other storage device) of that computer. You may make a single back-up or archival copy of the Software for back-up purposes only. You may not transfer this Software or assign this License Agreement to another party.

You are not permitted to, during the term of this License Agreement and thereafter:

- Use the Software on a network or file server.
- Use or copy the Software or the accompanying documentation except as provided in this License Agreement.
- Alter, merge, modify, or adapt the Software or the accompanying documentation in any way including disassembling or decompiling this Software.
- Loan, lease, sell, transfer, or sublicense the Software or the accompanying documentation.
- Copy, loan, lease, sell, transfer, or sublicense any output of this Software (including but not limited to printed maps and driving itineraries); However, you may provide a limited number of printed copies of a single trip to family members or traveling companions.
- You are not permitted to use the Software for motor-carrier tariff or routing purposes.
- Electronic reproduction and transmission of output to remote locations is not permitted.

ALK retains all rights not expressly granted. Nothing in this License Agreement constitutes a waiver of ALK's rights under the U.S. copyright laws or other applicable copyright laws or any other federal or state law.

2. Term:

This License is effective upon receipt by you of the Software and upon opening the package. The License is effective until terminated. You may terminate this License at any time by returning all copies of the Software, and any portions thereof, to ALK. The License terminates automatically if you fail to comply with any of the terms of this License Agreement. You agree upon such termination to return or destroy this CD-ROM and all other copies of the Software and certify in writing to ALK that you have done so.

3. Limited Warranty:

ALK warrants that all disc(s) on which the Software is furnished shall, for a period of 90 days from delivery (the "Warranty Period") be free, in normal use, from defects in material and workmanship. ALK will have no responsibility to replace any disc(s) that have been damaged by accident, abuse, or misapplication.

Customer Remedies: ALK's entire liability and your exclusive remedy shall be, at ALK's option, either (a) return of the price paid or (b) replacement of the disc(s) that does not meet ALK's Limited Warranty, and that is returned to ALK with a copy of your receipt.

Except as specifically provided above, ALK MAKES NO OTHER WARRANTY OR REPRESENTATION, EITHER EXPRESS OR IMPLIED, WITH RESPECT TO THE SOFTWARE OR DOCUMENTATION, INCLUDING ANY WARRANTY AS TO THE QUALITY, PERFORMANCE, MERCHANTABILITY, OR FITNESS FOR A PARTICULAR PURPOSE. IN NO EVENT WILL ALK TECHNOLOGIES, INC. BE LIABLE FOR DIRECT DAMAGES IN EXCESS OF THE LICENSE FEE OR ANY INDIRECT, SPECIAL, INCIDENTAL, OR CONSEQUENTIAL DAMAGES ARISING OUT OF THE USE OR INABILITY TO USE THE SOFTWARE OR DOCUMENTATION, EVEN IF ADVISED OF THE POSSIBILITY OF SUCH DAMAGES. IN NO CASE SHALL ALK'S LIABILITY EXCEED THE AMOUNT OF THE LICENSE FEE.

While the information contained in the Software was believed to have been correct at the time of publication, ALK cannot guarantee its accuracy and shall not be subject to liability for any errors or omissions. Information in the Software and its accompanying preprinted materials is subject to change without notice and does not represent a commitment or endorsement on the part of ALK. Routes and miles generated by the Software are not suitable for commercial truck use.

THE WARRANTY AND REMEDIES SET FORTH ABOVE ARE EXCLUSIVE AND IN LIEU OF ALL OTHERS, ORAL OR WRITTEN, EXPRESS OR IMPLIED. No ALK dealer, distributor, agent, or employee is authorized to make any modification or addition to this warranty. Some states do not allow the exclusion or limitation of implied warranties or limitation of liability for incidental or consequential damages, so the above limitation or exclusion may not apply to you.

4. Licensee's Responsibility:

You assume all responsibility for, and ALK shall not be liable for, all action taken, decisions made, and advice given as a result of your use of the Software.

5. US Government Restricted Rights:

The Software and documentation are provided with restricted and limited rights. Use, duplication, or disclosure by the Government is subject to restrictions set forth in subparagraphs (c) (1) and (2) of the Commercial Computer Software-Restricted Rights clause at 48 CFR 52.227-19, as applicable. Manufacturer is ALK Technologies, Inc., 1000 Herrontown Road, Princeton, NJ 08540.

6. General:

The export or re-export of the Software may be restricted by the laws of the United States and other countries, and you shall not export this Software in violation of any such applicable laws. This License Agreement is governed by the laws of the State of New Jersey.

© Copyright 1990-2004 ALK Technologies, Inc.

Exit Authority (c) 1999-2004 Zenrin USA, Inc. All rights reserved.

Disclosure for products containing Canadian Postal Code and/or Canadian Street-Level Data:

Based on Computer File(s) licensed from Statistics Canada. © Copyright, HER MAJESTY THE QUEEN IN RIGHT OF CANADA, as represented by the Minister of Industry, Statistics Canada 2004. ALK Technologies, Inc. is an Authorized User of selected Statistics Canada Computer File(s) and Distributor of derived Information Products under Licensing Agreement 6147. No confidential information about an individual, family, household, organisation or business has been obtained from Statistics Canada.

Software License Agreement for FONIX TEXT TO SPEECH ENGINE

IMPORTANT! READ THIS LICENSE AGREEMENT BEFORE OPENING THIS SOFTWARE PACKET. BY OPENING THE SEALED PACKET OR USING THE SOFTWARE, YOU INDICATE YOUR ACCEPTANCE OF THE ENTIRE AGREEMENT.

SOFTWARE LICENSE AGREEMENT

This Agreement is a legal agreement between you and Fonix Corporation ("Fonix"), but may be superseded by a separate license agreement that you and Fonix have signed. The software in this packet ("Software") and its media and documentation (collectively, the "Product") are protected by copyright and other intellectual property laws and international treaties. You have no title to, or ownership of, the Product, other than its physical media. Fonix reserves all rights not specifically granted in this Agreement.

USE AND RESTRICTIONS: You may operate the Software on only one computer. However, if you have purchased a network or multiple-user license, you may load and use as many single-use copies and/or support as many concurrent users, in the aggregate, as are authorized by such license. You may make only one copy of the Software, retaining the Fonix CD or other media for storage and back-up purposes. The Software does not include updates, maintenance, or support, which may be separately available. This Software and its voice output are for your personal, individual use only. You are not permitted to broadcast or distribute the voice output of the Software (i.e., synthesized speech) to more than one person or to use the Software's voice output for any commercial purposes. You may not modify, adapt, translate, rent, lease, loan, resell for profit, distribute, network, or create derivative works based on any part of the Software. You may not reverse engineer, decompile, or disassemble the Software.

LIMITED WARRANTY: Fonix warrants that the Product's physical media will be, under normal use, free from defects in material and workmanship for one year from the date you purchased it. Fonix's entire liability, and your exclusive remedy under this warranty, will be replacement of the defective media without charge. EXCEPT FOR THIS LIMITED WARRANTY, FONIX MAKES NO WARRANTIES, EXPRESS OR IMPLIED, AND DISCLAIMS ANY IMPLIED WARRANTY OR MERCHANTABILITY OR FITNESS FOR A PARTICULAR PURPOSE. Fonix does not warrant that the product is entirely error-free. FONIX'S TOTAL LIABILITY FOR ANY CLAIM OR DAMAGE ARISING OUT OF THE USE OF OR INABILITY TO USE THE SOFTWARE SHALL BE LIMITED TO DIRECT DAMAGES, WHICH SHALL NOT EXCEED THE LICENSE FEE YOU PAID. IN NO EVENT SHALL FONIX BE LIABLE FOR LOST PROFITS, LOST DATA, INTERRUPTIONS OF BUSINESS, OR ANY INCIDENTAL OR CONSEQUENTIAL DAMAGES ARISING OUT OF THE USE OF OR INABILITY TO USE THE SOFTWARE, REGARDLESS OF WHETHER FONIX HAS NOTICE OF THE POTENTIAL FOR SUCH LOSS OR DAMAGE.

The above limitations may be superseded by law in some jurisdictions.

U.S. GOVERNMENT RESTRICTED RIGHTS: The Software and any accompanying materials are provided with Restricted Rights. Use, duplications, or disclosure by the Government is subject to restrictions as set forth in subparagraph (c)(1)(ii) of The Rights in Technical Data and Computer Software clause at DFARS 252.227-7013 or subparagraphs (c)(1) and (2) of the Commercial Computer Software-Restricted Rights at 48 CFR 52.227-19, as applicable. Contractor/manufacturer is Fonix Corporation at 1225 Eagle Gate Tower, 60 East South Temple St., Salt Lake City, Utah 84111.

GENERAL: If any term of this Agreement is found void or unenforceable, all other terms shall remain in full force and effect. This Agreement shall be governed by the internal laws of Utah. If you breach any term of this Agreement, Fonix may terminate this license and you must return all copies of the Product to Fonix.

ALK® Technologies, Inc. LICENSE AGREEMENT
CoPilot | Pocket PC 5 with EUROPEAN DATA
LICENSES: 1 User

IMPORTANT: Please read the following agreement ("License") carefully.

THIS IS A LEGAL AGREEMENT BETWEEN YOU, THE USER (either an individual or an entity), AND ALK Technologies, Inc. ("ALK"). IF YOU DO NOT AGREE TO THE TERMS OF THIS LICENSE, DO NOT INSTALL THE SOFTWARE. Promptly return the package and accompanying materials (including written materials and containers) to the dealer from which you obtained them for a full refund.

Acceptance: Installation or use of the enclosed ALK Technologies, Inc. ("ALK") software (the "Software") on your computer constitutes your acceptance of these terms. If you do not agree to the terms of this License, you must immediately delete the Software from your computer and destroy any copies you made of the Software and of any written materials relating to the software, and promptly return the Software and, if bought as part of a package, any associated devices to your retailer for a refund.

License: ALK grants you, as an individual, a License to install and use one copy of the Software on a single personal computer at a time. Your License to use the Software is subject to you complying with the terms of this License. A License is required for each installation of the Software, unless the Software is (i) installed temporarily on a computer during the repair or maintenance of the computer on which the Software is normally installed and (ii) is immediately deleted from such computer as soon as those repairs or maintenance are complete. You may make one copy of the Software for backup purposes only.

Copyright: United States copyright law and international treaty provisions protect the Software. You agree that no title to the intellectual property in the Software is transferred to you. You further acknowledge that title and ownership rights will remain the exclusive property of ALK, and you will not acquire any rights to the Software except as expressly set out in this License. You agree that any copies of the Software will contain the same proprietary notices that appear on and in the Software.

Prohibited Use: Unless you have ALK's prior written permission, you may not (i) use, copy, modify, alter, or transfer the Software or accompanying documentation, except as expressly permitted in this License; (ii) translate, disassemble, decompile, or reverse engineer the Software (iii) sublicense or lease the Software or its documentation; or (iv) use the Software in a multi-user or networked environment or on a rental basis or in a time-sharing or computer service business.

Limited Warranty: ALK warrants that the Software will perform substantially in accordance with the accompanying written materials for a period of 30 days from the date of purchase. Any implied warranties relating to the Software are

limited to such 30 day period provided that limitation is permitted by applicable law.

End-User Remedies: If the Software does not conform to the "Limited Warranty" above, ALK's entire liability and your sole and exclusive remedy will be, at ALK's option, either to (i) correct the error, or (ii) help you work around the error, or (iii) accept a return and issue a refund through your retailer. The Limited Warranty is void if failure of the Software has resulted from your fault, abuse, or misapplication. If we correct an error in the Software for you, then the unexpired portion of the Limited Warranty period as at the date you informed us of the error will apply to the corrected software once you have received the corrected version.

NO OTHER WARRANTIES: EXCEPT AS SET OUT IN THE LIMITED WARRANTY, ALK DOES NOT WARRANT THAT THE SOFTWARE IS ERROR FREE. ALK DISCLAIMS ALL OTHER WARRANTIES WITH RESPECT TO THE SOFTWARE, WHETHER EXPRESS OR IMPLIED, INCLUDING BUT NOT LIMITED TO IMPLIED WARRANTIES OF MERCHANTABILITY, FITNESS FOR A PARTICULAR PURPOSE AND NON-INFRINGEMENT OF THIRD PARTY RIGHTS. Some jurisdictions do not allow the exclusion of implied warranties or limits on how long an implied warranty may last, or an exclusion of incidental damages. This means the above limitations or exclusions may not apply to you. This warranty gives you specific legal rights and you may also have other rights depending on your country.

No Liability for indirect loss: In no event will ALK be liable to you for any loss of profit, wasted time, lost business or for any incidental, or indirect loss of any kind arising out of the performance or use of the Software, even if ALK has been advised of the possibility of such damages.

Termination: Without prejudice to its other rights, ALK may terminate this License if you fail to comply with these terms and conditions. In that situation, you must destroy all copies of the Software.

Choice of Law: This License is governed by the laws of England.

END USER DATA LICENSE AGREEMENT
for Navigation Technologies, Inc.

PLEASE READ THIS END USER LICENSE AGREEMENT CAREFULLY BEFORE USING THE NAVTECH DATABASE

NOTICE TO THE USER:

THIS IS A LICENSE AGREEMENT - AND NOT AN AGREEMENT FOR SALE - BETWEEN YOU AND NAVIGATION TECHNOLOGIES B.V. FOR YOUR COPY OF THE NAVTECH NAVIGABLE MAP DATABASE, INCLUDING ASSOCIATED COMPUTER SOFTWARE, MEDIA AND EXPLANATORY PRINTED DOCUMENTATION PUBLISHED BY NAVIGATION TECHNOLOGIES (JOINTLY "THE

DATABASE"). BY DULY SIGNING AND RETURNING THIS AGREEMENT TO US AND IN ANY EVENT BY USING THE DATABASE, YOU ACCEPT AND AGREE TO ALL TERMS AND CONDITIONS OF THIS END USER LICENSE AGREEMENT ("EULA"). IF YOU DO NOT AGREE TO THE TERMS OF THIS EULA, PROMPTLY RETURN THE DATABASE, ALONG WITH ALL OTHER ACCOMPANYING ITEMS, TO YOUR SUPPLIER FOR A REFUND.

OWNERSHIP

The database and the copyrights and intellectual property or neighboring rights therein are owned by Navigation Technologies or its licensors. Ownership of the media on which the Database is contained is retained by Navigation Technologies and/or your supplier until after you have paid in full any amounts due to Navigation Technologies and/or your supplier pursuant to this EULA or similar agreement(s) under which goods are provided to you.

LICENSE GRANT

Navigation Technologies grants you a non-exclusive license to use the Database for your personal use or, if applicable, for use in your business' internal operations. This license does not include the right to grant sub-licenses.

LIMITATIONS ON USE

The Database is restricted for use in the specific system for which it was created. Except to the extent explicitly permitted by mandatory laws (e.g. national laws based on the European Software Directive (91/250) and the Database Directive (96/9)), you may not extract or reutilize substantial parts of the contents of the Database nor reproduce, copy, modify, adapt, translate, disassemble, decompile, reverse engineer any portion of the Database. If you wish to obtain interoperability information as meant in (the national laws based on) the European Software Directive, you shall grant Navigation Technologies reasonable opportunity to provide said information on reasonable terms, including costs, to be determined by Navigation Technologies.

TRANSFER OF LICENSE

You may not transfer the Database to third parties, except when installed in the system for which it was created or when you do not retain any copy of the Database, and provided that the transferee agrees to all terms and conditions of this EULA and confirms this in writing to Navigation Technologies.

LIMITED WARRANTY

Navigation Technologies warrants that, subject to the Warnings set out below, for a period of 12 months after acquisition of your copy of the Database, it will perform substantially in accordance with Navigation Technologies' Criteria for Accuracy and Completeness existing on the date you acquired the Database; these criteria are available from Navigation Technologies at your request. If the Database does not perform in accordance with this limited warranty, Navigation Technologies will use reasonable efforts to repair or replace your non-conforming copy of the Database. If these efforts do not lead to performance of the Database in accordance with the warranties set out herein, you will have the option to either receive a reasonable refund of the price you paid for the

Database or to rescind this EULA. This shall be Navigation Technologies' entire liability and your sole remedy against Navigation Technologies. Except as expressly provided in this section, Navigation Technologies does not warrant nor make any representations regarding the use of results of the use of the database in terms of its correctness, accuracy, reliability, or otherwise. Navigation Technologies does not warrant that the Database is or will be error free. No oral or written information or advice provided by Navigation Technologies, your supplier or any other person shall create a warranty or in any way increase the scope of the limited warranty described above. The limited warranty set forth in this EULA does not affect or prejudice any statutory legal rights that you may have under the legal warranty against hidden defects.

If you did not acquire the Database from Navigation Technologies directly, you may have statutory rights against the person from whom you have acquired the Database in addition to the rights granted by Navigation Technologies hereunder according to the law of your jurisdiction. The above warranty of Navigation Technologies shall not affect such statutory rights and you may assert such rights in addition to the warranty rights granted herein.

LIMITATION OF LIABILITY

The price of the Database does not include any consideration for assumption of risk of consequential, indirect or unlimited direct damages which may arise in connection with your use of the Database. Accordingly, in no event shall Navigation Technologies be liable for any consequential or indirect damages, including without limitation, loss of revenue, data, or use, incurred by you or any third party arising out of your use of the Database, whether in an action in contract or tort or based on a warranty, even if Navigation Technologies has been advised of the possibility of such damages. In any event Navigation Technologies' liability for direct damages is limited to the price of your copy of the Database.

THE LIMITED WARRANTY AND LIMITATION OF LIABILITY, SET FORTH IN THIS EULA, DO NOT AFFECT OR PREJUDICE YOUR STATUTORY RIGHTS WHERE YOU HAVE ACQUIRED THE DATABASE OTHERWISE THAN IN THE COURSE OF A BUSINESS.

WARNINGS

The Database reflects reality as existing before you received the Database and it comprises data and information from government and other sources, which may contain errors and omissions. Accordingly, the Database may contain inaccurate or incomplete information due to the passage of time, changing circumstances, and due to the nature of the sources used. The Database does not include or reflect information on - inter alia - neighborhood safety; law enforcement; emergency assistance; construction work; road or lane closures; vehicle or speed restrictions; road slope or grade; bridge height, weight or other limits; road or traffic conditions; special events; traffic congestion; or travel time.

GOVERNING LAW

This Agreement shall be governed by the laws of the jurisdiction, in which you reside at the date of acquisition of the Database. Should you at that

moment reside outside the European Union or Switzerland, the law of the jurisdiction within the European Union or Switzerland where you acquired the Database shall apply. In all other cases, or if the jurisdiction where you acquired the Database cannot be defined, the laws of the Netherlands shall apply. The courts competent at your place of residence at the time you acquired the Database shall have jurisdiction over any dispute arising out of, or relating to this Agreement, without prejudice to Navigation Technologies' right to bring claims at your then current place of residence.

Software License Agreement for FONIX TEXT TO SPEECH ENGINE

IMPORTANT! READ THIS LICENSE AGREEMENT BEFORE OPENING THIS SOFTWARE PACKET. BY OPENING THE SEALED PACKET OR USING THE SOFTWARE, YOU INDICATE YOUR ACCEPTANCE OF THE ENTIRE AGREEMENT.

SOFTWARE LICENSE AGREEMENT

This Agreement is a legal agreement between you and Fonix Corporation ("Fonix"), but may be superseded by a separate license agreement that you and Fonix have signed. The software in this packet ("Software") and its media and documentation (collectively, the "Product") are protected by copyright and other intellectual property laws and international treaties. You have no title to, or ownership of, the Product, other than its physical media. Fonix reserves all rights not specifically granted in this Agreement.

USE AND RESTRICTIONS: You may operate the Software on only one computer. However, if you have purchased a network or multiple-user license, you may load and use as many single-use copies and/or support as many concurrent users, in the aggregate, as are authorized by such license. You may make only one copy of the Software, retaining the Fonix CD or other media for storage and back-up purposes. The Software does not include updates, maintenance, or support, which may be separately available. This Software and its voice output are for your personal, individual use only. You are not permitted to broadcast or distribute the voice output of the Software (i.e., synthesized speech) to more than one person or to use the Software's voice output for any commercial purposes. You may not modify, adapt, translate, rent, lease, loan, resell for profit, distribute, network, or create derivative works based on any part of the Software. You may not reverse engineer, decompile, or disassemble the Software.

LIMITED WARRANTY: Fonix warrants that the Product's physical media will be, under normal use, free from defects in material and workmanship for one year from the date you purchased it. Fonix's entire liability, and your exclusive remedy under this warranty, will be replacement of the defective media without charge. EXCEPT FOR THIS LIMITED WARRANTY, FONIX MAKES NO WARRANTIES, EXPRESS OR IMPLIED, AND DISCLAIMS ANY IMPLIED WARRANTY OR MERCHANTABILITY OR FITNESS FOR A PARTICULAR PURPOSE. Fonix does not warrant that the product is entirely error-free. FONIX'S TOTAL LIABILITY FOR ANY CLAIM OR DAMAGE ARISING OUT OF THE USE OF OR INABILITY

TO USE THE SOFTWARE SHALL BE LIMITED TO DIRECT DAMAGES, WHICH SHALL NOT EXCEED THE LICENSE FEE YOU PAID. IN NO EVENT SHALL FONIX BE LIABLE FOR LOST PROFITS, LOST DATA, INTERRUPTIONS OF BUSINESS, OR ANY INCIDENTAL OR CONSEQUENTIAL DAMAGES ARISING OUT OF THE USE OF OR INABILITY TO USE THE SOFTWARE, REGARDLESS OF WHETHER FONIX HAS NOTICE OF THE POTENTIAL FOR SUCH LOSS OR DAMAGE.

The above limitations may be superseded by law in some jurisdictions.

U.S. GOVERNMENT RESTRICTED RIGHTS: The Software and any accompanying materials are provided with Restricted Rights. Use, duplications, or disclosure by the Government is subject to restrictions as set forth in subparagraph (c)(1)(ii) of The Rights in Technical Data and Computer Software clause at DFARS 252.227-7013 or subparagraphs (c)(1) and (2) of the Commercial Computer Software-Restricted Rights at 48 CFR 52.227-19, as applicable. Contractor/manufacturer is Fonix Corporation at 1225 Eagle Gate Tower, 60 East South Temple St., Salt Lake City, Utah 84111.

GENERAL: If any term of this Agreement is found void or unenforceable, all other terms shall remain in full force and effect. This Agreement shall be governed by the internal laws of Utah. If you breach any term of this Agreement, Fonix may terminate this license and you must return all copies of the Product to Fonix.

ALK Technologies, Inc. LICENSE AGREEMENT
CoPilot | Pocket PC 5 with AUSTRALIAN DATA
LICENSES: 1 User

THIS IS A LEGAL AGREEMENT BETWEEN YOU, THE USER (either an individual or an entity), AND ALK Technologies, Inc. ("ALK"). IF YOU DO NOT AGREE TO THE TERMS OF THIS LICENSE, DO NOT INSTALL THE SOFTWARE. Promptly return the package and accompanying materials (including written materials and containers) to the dealer from which you obtained them for a full refund.

INSTALLING THIS SOFTWARE INDICATES YOUR ACCEPTANCE OF THE TERMS OF THIS LICENSE.

1. Grant of License:

This ALK License Agreement ("License") is a single-user, non-exclusive, non-transferable license agreement and not an agreement for sale. ALK hereby licenses the on-line User Guide and CD-ROM software identified above (collectively, "the Software") to you under the following terms and conditions.

The Software may not be loaded onto a network of any type. You may use the Software on any compatible personal computer, provided you use it on only one computer at a time. The Software is "in use" on a computer when it is loaded into the temporary memory (i.e., RAM) or installed into the permanent memory (e.g., hard disk, CD-ROM, or other storage device) of that computer. If the Software is permanently installed on the hard disk or other storage device of a computer (other than a network server) and one person uses that computer more than 80 percent of the time it is in use, then that person may also use the Software on a portable or home computer. You may make a single back-up or archival copy of the Software for back-up purposes only. You may not transfer this Software or assign this License Agreement to another party.

You are NOT permitted, during the term of this License Agreement and thereafter to:

- Use the Software on a network or file server.
- Use or copy the Software or the accompanying documentation except as provided in this License Agreement.
- Alter, merge, modify, or adapt the Software or the accompanying documentation in any way including disassembling or decompiling this Software.
- Loan, lease, sell, transfer, or sublicense the Software or the accompanying documentation.
- Copy, loan, lease, sell, transfer, or sublicense any output of this Software (including but not limited to printed maps and driving itineraries); However, you may provide a limited number of printed copies (up to 10) of a single trip to family members or traveling companions.
- You are not permitted to use the Software for motor-carrier tariff or routing purposes.
- Electronic reproduction and transmission of output to remote locations are not permitted.

ALK retains all rights not expressly granted. Nothing in this License Agreement constitutes a waiver of ALK's rights under the U.S. copyright laws or other applicable copyright laws or any other federal or state law.

2. Term:

This License is effective upon receipt by you of the Software and upon opening the package. The License is effective until terminated. You may terminate this License at any time by returning all copies of the Software, and any portions thereof, to ALK. The License terminates automatically if you fail to comply with any of the terms of this License Agreement. You agree upon such termination to return or destroy this CD-ROM and all other copies of the Software and certify in writing to ALK that you have done so.

3. Limited Warranty:

ALK warrants that all media on which the Software is furnished shall, for a period of 90 days from delivery (the "Warranty Period") be free, in normal use, from defects in material and workmanship. ALK will have no responsibility to replace any disc(s) that have been damaged by accident, abuse, or misapplication.

Customer Remedies: ALK's entire liability and your exclusive remedy shall be, at ALK's option, either (a) return of the price paid or (b) replacement of the media that does not meet ALK's Limited Warranty, and that is returned to ALK with a copy of your receipt.

Except as specifically provided above, ALK MAKES NO OTHER WARRANTY OR REPRESENTATION, EITHER EXPRESS OR IMPLIED, WITH RESPECT TO THE SOFTWARE OR DOCUMENTATION, INCLUDING ANY WARRANTY AS TO THE QUALITY, PERFORMANCE, MERCHANTABILITY, OR FITNESS FOR A PARTICULAR PURPOSE. IN NO EVENT WILL ALK BE LIABLE FOR DIRECT DAMAGES IN EXCESS OF THE LICENSE FEE OR ANY INDIRECT, SPECIAL, INCIDENTAL, OR CONSEQUENTIAL DAMAGES ARISING OUT OF THE USE OR INABILITY TO USE THE SOFTWARE OR DOCUMENTATION, EVEN IF ADVISED OF THE POSSIBILITY OF SUCH DAMAGES. IN NO CASE SHALL ALK'S LIABILITY EXCEED THE AMOUNT OF THE LICENSE FEE.

While the information contained in the Software was believed to have been correct at the time of publication, ALK cannot guarantee its accuracy and shall not be subject to liability for any errors or omissions. Information in the Software and its accompanying preprinted materials is subject to change without notice and does not represent a commitment or endorsement on the part of ALK. Routes and miles generated by the Software are not suitable for commercial truck use.

THE WARRANTY AND REMEDIES SET FORTH ABOVE ARE EXCLUSIVE AND IN LIEU OF ALL OTHERS, ORAL OR WRITTEN, EXPRESS OR IMPLIED. No ALK dealer, distributor, agent, or employee is authorized to make any modi-

fication or addition to this warranty. Some jurisdictions do not allow the exclusion or limitation of implied warranties or limitation of liability for incidental or consequential damages, so the above limitation or exclusion may not apply to you.

4. Licensee's Responsibility:

You assume all responsibility for, and ALK shall not be liable for, all action taken, decisions made, and advice given as a result of your use of the Software.

5. General:

The export or re-export of the Software may be restricted by the laws of the United States and other countries, and you shall not export this Software in violation of any such applicable laws. This License Agreement is governed by the laws of the State of New Jersey.

Software License Agreement for FONIX TEXT TO SPEECH ENGINE

IMPORTANT! READ THIS LICENSE AGREEMENT BEFORE OPENING THIS SOFTWARE PACKET. BY OPENING THE SEALED PACKET OR USING THE SOFTWARE, YOU INDICATE YOUR ACCEPTANCE OF THE ENTIRE AGREEMENT.

SOFTWARE LICENSE AGREEMENT

This Agreement is a legal agreement between you and Fonix Corporation ("Fonix"), but may be superseded by a separate license agreement that you and Fonix have signed. The software in this packet ("Software") and its media and documentation (collectively, the "Product") are protected by copyright and other intellectual property laws and international treaties. You have no title to, or ownership of, the Product, other than its physical media. Fonix reserves all rights not specifically granted in this Agreement.

USE AND RESTRICTIONS: You may operate the Software on only one computer. However, if you have purchased a network or multiple-user license, you may load and use as many single-use copies and/or support as many concurrent users, in the aggregate, as are authorized by such license. You may make only one copy of the Software, retaining the Fonix CD or other media for storage and back-up purposes. The Software does not include updates, maintenance, or support, which may be separately available. This Software and its voice output are for your personal, individual use only. You are not permitted to broadcast or distribute the voice output of the Software (i.e., synthesized speech) to more than one person or to use the Software's voice output for any commercial purposes. You may not modify, adapt, translate, rent, lease, loan, resell for profit, distribute, network, or create derivative works based on any part of the Software. You may not reverse engineer, decompile, or disassemble the Software.

LIMITED WARRANTY: Fonix warrants that the Product's physical media will be, under normal use, free from defects in material and workmanship for one

year from the date you purchased it. Fonix's entire liability, and your exclusive remedy under this warranty, will be replacement of the defective media without charge. EXCEPT FOR THIS LIMITED WARRANTY, FONIX MAKES NO WARRANTIES, EXPRESS OR IMPLIED, AND DISCLAIMS ANY IMPLIED WARRANTY OR MERCHANTABILITY OR FITNESS FOR A PARTICULAR PURPOSE. Fonix does not warrant that the product is entirely error-free. FONIX'S TOTAL LIABILITY FOR ANY CLAIM OR DAMAGE ARISING OUT OF THE USE OF OR INABILITY TO USE THE SOFTWARE SHALL BE LIMITED TO DIRECT DAMAGES, WHICH SHALL NOT EXCEED THE LICENSE FEE YOU PAID. IN NO EVENT SHALL FONIX BE LIABLE FOR LOST PROFITS, LOST DATA, INTERRUPTIONS OF BUSINESS, OR ANY INCIDENTAL OR CONSEQUENTIAL DAMAGES ARISING OUT OF THE USE OF OR INABILITY TO USE THE SOFTWARE, REGARDLESS OF WHETHER FONIX HAS NOTICE OF THE POTENTIAL FOR SUCH LOSS OR DAMAGE. The above limitations may be superseded by law in some jurisdictions.

U.S. GOVERNMENT RESTRICTED RIGHTS: The Software and any accompanying materials are provided with Restricted Rights. Use, duplications, or disclosure by the Government is subject to restrictions as set forth in subparagraph (c)(1)(ii) of The Rights in Technical Data and Computer Software clause at DFARS 252.227-7013 or subparagraphs (c)(1) and (2) of the Commercial Computer Software-Restricted Rights at 48 CFR 52.227-19, as applicable. Contractor/manufacturer is Fonix Corporation at 1225 Eagle Gate Tower, 60 East South Temple St., Salt Lake City, Utah 84111.

GENERAL: If any term of this Agreement is found void or unenforceable, all other terms shall remain in full force and effect. This Agreement shall be governed by the internal laws of Utah. If you breach any term of this Agreement, Fonix may terminate this license and you must return all copies of the Product to Fonix.

LICENSE AGREEMENT FOR WHEREIS™ DATA

1. GRANT OF LICENCE

Telstra Corporation Limited (ABN 33 051 775 556) ("Telstra") through its agent Sensis Pty Ltd (ABN 30 007 423 912) ("Licensor") grants you a non-exclusive, non-transferable licence to use the mapping data ("Whereis Data") contained in this CD-ROM on the following terms ("Licence"). The Licence commences when you click on the "I Agree" button at the end of these terms and continues until terminated in accordance with this agreement.

2. RIGHTS OF USE

You may only use the Whereis Data for your own personal use. You may only install and use the Whereis Data on one device at any one time. You must not copy, reverse engineer, adapt, modify, distribute, publish in any form or permit any other person to use or deal with the whole or any part of the Whereis Data. You must use reasonable steps to prevent any unauthorised copying or use of the Whereis Data; and immediately notify the Licensor if you become aware of any unauthorised copying or use of the Whereis Data by any person or of any

other infringement of the Licensor's rights in relation to the Whereis Data. The contact details of the Licensor are as follows: Sensis Pty Ltd, 181-189 Victoria Parade, Collingwood, Victoria 3066, Australia.

3. PROPERTY AND OWNERSHIP

All intellectual property rights (including copyright and any trade marks used by the Licensor and Telstra) in and to the Whereis Data are the sole and exclusive property of, or a use under licence by, the Licensor (or its licensors). Except to the extent permitted by this Licence, you do not acquire any intellectual property rights in or to the Whereis Data.

4. EXCLUSION OF LIABILITY

To the extent permitted by law, the Licensor does not make any warranties of any kind, whether express or implied, including any implied warranty of merchantability or fitness of the Whereis Data for a particular purpose. Licensor's liability for breach of any condition or warranty implied by statute which cannot be excluded is (to the extent permitted by law) limited to, in the case of the supply of goods, the repair, replacement or re-supply of the goods or of equivalent goods or the payment of the cost of repairing or replacing the goods or of acquiring equivalent goods; and in the case of the supply of services, supplying the services again, or the payment of the cost of having the services supplied again, provided that there shall be no such limitation for breach of such a condition or warranty where the relevant law prohibits such limitation.

Subject to this clause 4, the Licensor, its employees, agents and contractors will not be liable (whether in contract, tort or otherwise) to you or any other person for any loss, costs, damage or injury of any kind whatsoever (including incidental or consequential loss) wholly or partly arising out of or in connection with the use of or inability to use the Whereis Data.

5. TERMINATION

The Licensor may terminate the Licence immediately if you are in breach of any provision of this agreement. Your rights under this agreement cease immediately upon termination of the Licence and you must immediately cease using the Whereis Data; and at the Licensor's election, return to the Licensor at the details described in clause 2.5 or destroy all materials bearing or containing the Whereis Data and, if required by the Licensor, shall certify that the Whereis Data and all such copies have been returned or destroyed. Termination of the Licence does not affect any rights or remedies which accrued prior to termination.

6. GENERAL

You may not assign or sub-license your rights under this Licence. This agreement constitutes the entire agreement between the parties. Any previous agreements, understandings and negotiations cease to have any effect. A provision of, or a right created under, this agreement may not be waived except in writing signed by the Licensor. This agreement is governed by the laws in force in the State of Victoria, Australia. A reference to a person includes a reference to a firm, corporation or other corporate body.

Free Manuals Download Website

<http://myh66.com>

<http://usermanuals.us>

<http://www.somanuals.com>

<http://www.4manuals.cc>

<http://www.manual-lib.com>

<http://www.404manual.com>

<http://www.luxmanual.com>

<http://aubethermostatmanual.com>

Golf course search by state

<http://golfingnear.com>

Email search by domain

<http://emailbydomain.com>

Auto manuals search

<http://auto.somanuals.com>

TV manuals search

<http://tv.somanuals.com>