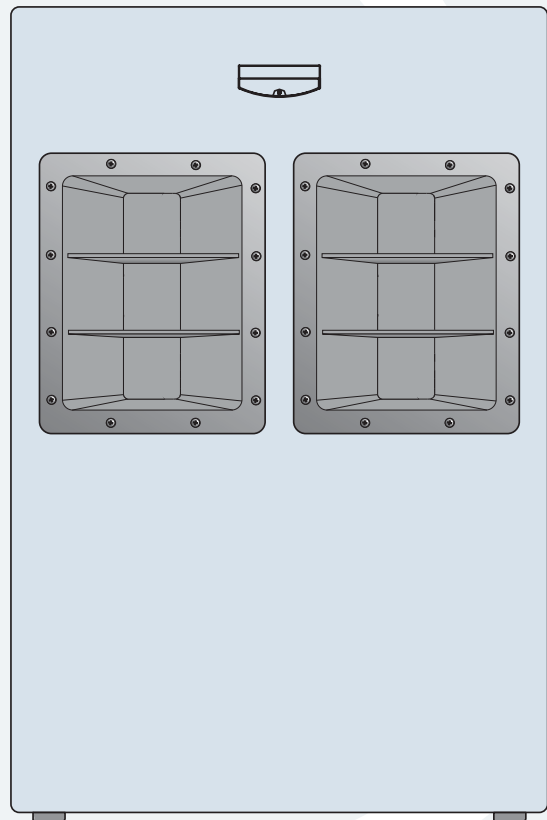




SWA2801z REPAIR MANUAL





These instructions are intended to help restore any ailing SWA2801z Active Subwoofer back to factory working conditions. They show how to remove and replace the drivers and the amplifier assembly.

Please contact Mackie Tech Support (1-800-898-3211) to receive a Service Request Number and Order Number for parts needed for this restoration. They will also help you determine the nature of the problem and what parts will repair the unit.

Tools needed:

NOTE: not all tools listed below will be needed for your repair

- Phillips head screwdriver.
- 4mm and 5mm allen wrench.
- Solid workbench.
- Non-carpeted work area due to static electricity. If available, an ESD mat (Electro-static discharge) is optimal.

Parts needed:

NOTE: not all parts listed below will be needed for your repair

- | | | |
|----------------------|---------------|------------|
| • 18" Woofer (#1) | Part #0010141 | pages 3-4 |
| • 18" Woofer (#2) | Part #0010141 | pages 5-6 |
| • Amplifier Assembly | Part #0017683 | pages 7-10 |

Safety Warnings:

- Make sure that you turn off the unit and disconnect the power cord (and all other cords) before you begin these procedures.
- Always use safety glasses!
- Please try NOT to touch any of the pcb circuitry, capacitors, resistors, etc.
- Take care to read and follow these instructions. It may help to read the instructions prior to the repair to get an idea of what it entails.
- Before beginning the repair, touch metal to discharge any lingering internal static electricity.





Woofer #1 replacement:



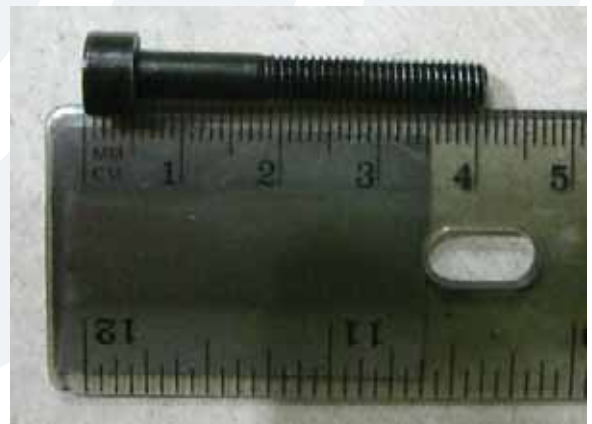
1 Sixteen screws need to be removed from the grill using the phillips head screwdriver. Make sure the front of the cabinet is facing upwards and the wheels are facing down.



2 Keep the sixteen screws in a safe place.



3 Eight screws need to be removed from the woofer using the 4mm allen wrench.



4 Keep the eight screws in a safe place.





Woofer #1 replacement continued:



- 5** Carefully begin to remove the woofer. It may be easier to start at the top so the weight remains rested on the bottom until a firm grip of the entire woofer can be made.



Caution: The woofer is approximately 20 pounds with the weight unevenly distributed.

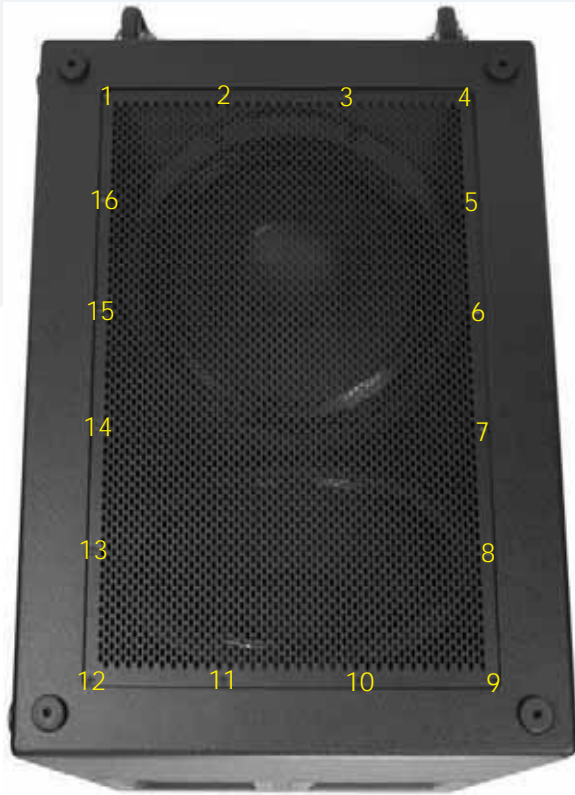
**Push down**

- 6** The positive (solid blue) and negative (solid black) cables are still attached to the woofer terminals. Remove the cables from their terminals simply by pushing down on the terminal and pulling out the cable. The woofer may be removed from the cabinet enclosure by angling it to the side ever so slightly.

- 7** This is what it looks like with the grill and woofer removed. Place the new woofer (part #0010141) where the old one was. Follow the same steps as above, but backwards 6 to 1. Power up the SWA2801z and the new woofer should now be pumping out glorious lows. Awesome, you just replaced an 18" woofer!



Woofer #2 replacement:



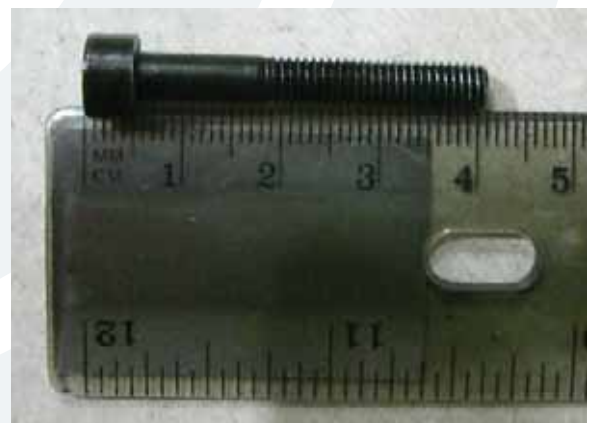
1 Sixteen screws need to be removed from the grill using the phillips head screwdriver. Make sure the wheels are facing upwards and the front of the cabinet is facing down.



3 Eight screws need to be removed from the woofer using the 4mm allen wrench.



2 Keep the sixteen screws in a safe place.



4 Keep the eight screws in a safe place.





Woofer #2 replacement continued:



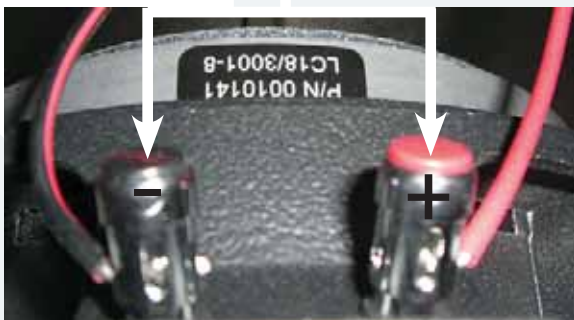
5 Carefully begin to remove the woofer. It may be easier to start at the top so the weight remains rested on the bottom until a firm grip of the entire woofer can be made.

Caution: The woofer is approximately 20 pounds with the weight unevenly distributed.



7 This is what it looks like with the grill and woofer removed. Place the new woofer (part #0010141) where the old one was. Follow the same steps as above, but backwards 6 to 1. Power up the SWA2801z and the new woofer should now be pumping out glorious lows. Awesome, you just replaced an 18" woofer!

Push down



6 The positive (solid red) and negative (red and black) cables are still attached to the woofer terminals. Remove the cables from their terminals simply by pushing down on the terminal and pulling out the cable. The woofer may be removed from the cabinet enclosure by angling it to the side ever so slightly.



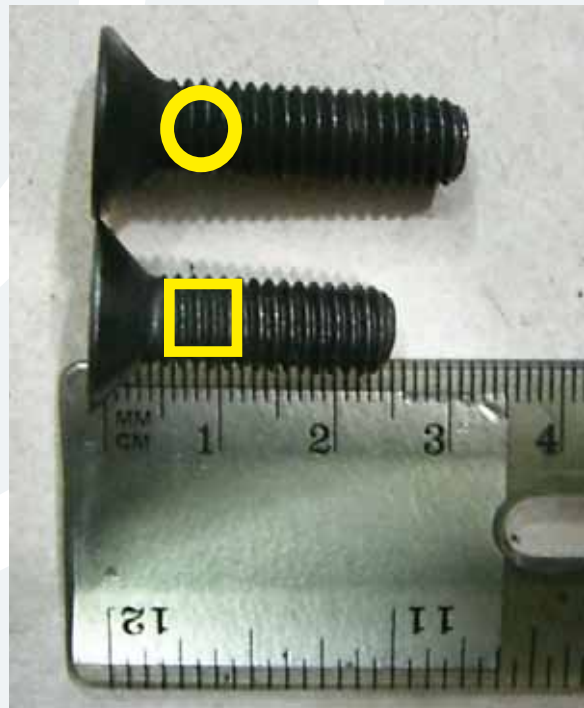


Amplifier Assembly replacement:



1 Five screws need to be removed from the SWA2801z amplifier assembly using the 5mm allen wrench. Two screws are located on the left side, three on the right. See the following pictures and further instructions. Make sure the wheels are facing upwards and the front of the cabinet is facing down.

3 The last remaining three screws are located on the right side of the SWA2801z (holding the bottom of the amplifier assembly to the cabinet).



2 Two screws located on the left side of the SWA2801z patiently awaiting removal.

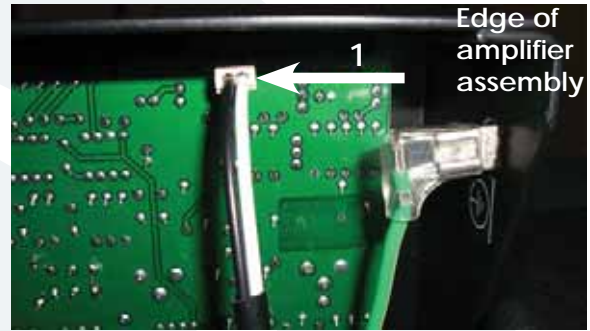
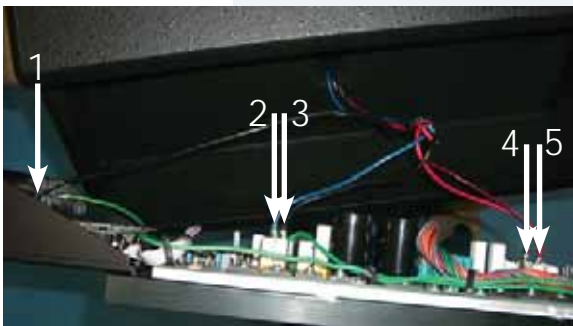
4 Keep the five screws in a safe place. Note: There are two different screws that connect the cabinet to the amplifier assembly (as seen above).

The LOUD Technologies Family of Brands





Amplifier assembly replacement continued:



5a Closeups of the led PCB cable and connector are shown above. The white wire of the cable is closest to the edge of the amplifier assembly. The cable only fits in one way.

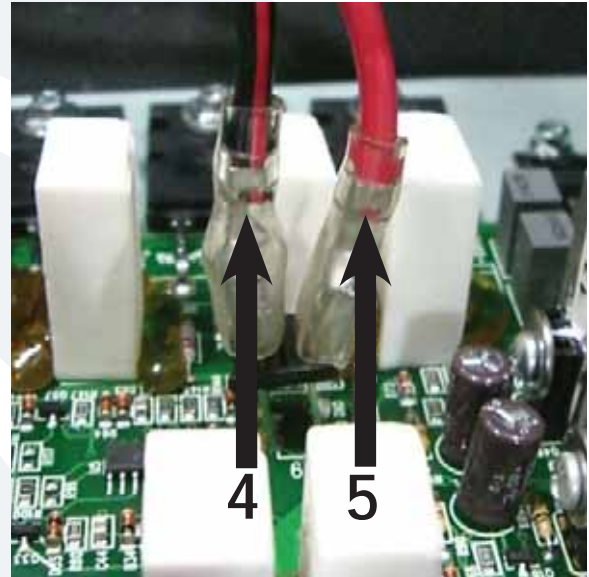
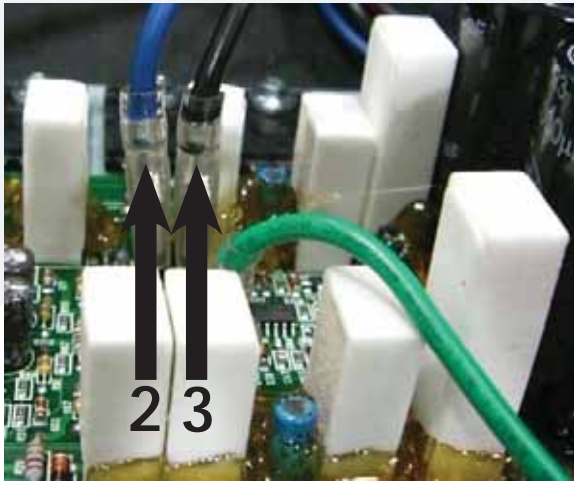
5 It may be easier to remove the amplifier assembly by gripping a ridge on each side of the assembly using a pair of pliers. Do not completely remove the amplifier assembly yet, as some cables need to be removed first. Five cables need to be removed from the amplifier assembly: (1) led PCB cable, (2) solid blue, (3) solid black, (4) red and black, and (5) solid red. Do not force cable removal or connection, although needle-nose pliers may aid in loosening the crimped cables. Notice their placement in the following pictures, as well.

Caution: The amplifier assembly is approximately 22 pounds, so please make sure to grasp it firmly.



Amplifier assembly replacement continued:

www.loudtechinc.com



5b Closeups of one of the woofer's cables and connectors are shown above. Make sure the cables are reconnected to the same terminals they were removed from (but on the new amplifier assembly). Once again, they are: (2) solid blue and (3) solid black. Do not force cable removal or connection, although needle-nose pliers may aid in loosening the crimped cables.

5c Closeups of the other woofer's cables and connectors are shown above. Make sure the cables are reconnected to the same terminals they were removed from (but on the new amplifier assembly). Once again, they are: (4) red and black and (5) solid red. Do not force cable removal or connection, although needle-nose pliers may aid in loosening the crimped cables.



Amplifier assembly replacement continued:

6 Place the new amplifier assembly (part #0017683) where the old one was. Follow the same steps as above, but backwards 5 to 1. Power up the SWA2801z and relish in the fact that you just replaced an amplifier assembly. Hats off to you for a job well done!

7 Important: The faulty amplifier assembly must be returned to LOUD Technologies. The address should be on the return shipping label that was provided with the new amplifier assembly. If not, the return address is at the top of this page. Also, please write the order number and service request number (ex: 1046256-1203935) in big, black, bold numbers on the outside of the box. This helps expedite the return.

Free Manuals Download Website

<http://myh66.com>

<http://usermanuals.us>

<http://www.somanuals.com>

<http://www.4manuals.cc>

<http://www.manual-lib.com>

<http://www.404manual.com>

<http://www.luxmanual.com>

<http://aubethermostatmanual.com>

Golf course search by state

<http://golfingnear.com>

Email search by domain

<http://emailbydomain.com>

Auto manuals search

<http://auto.somanuals.com>

TV manuals search

<http://tv.somanuals.com>