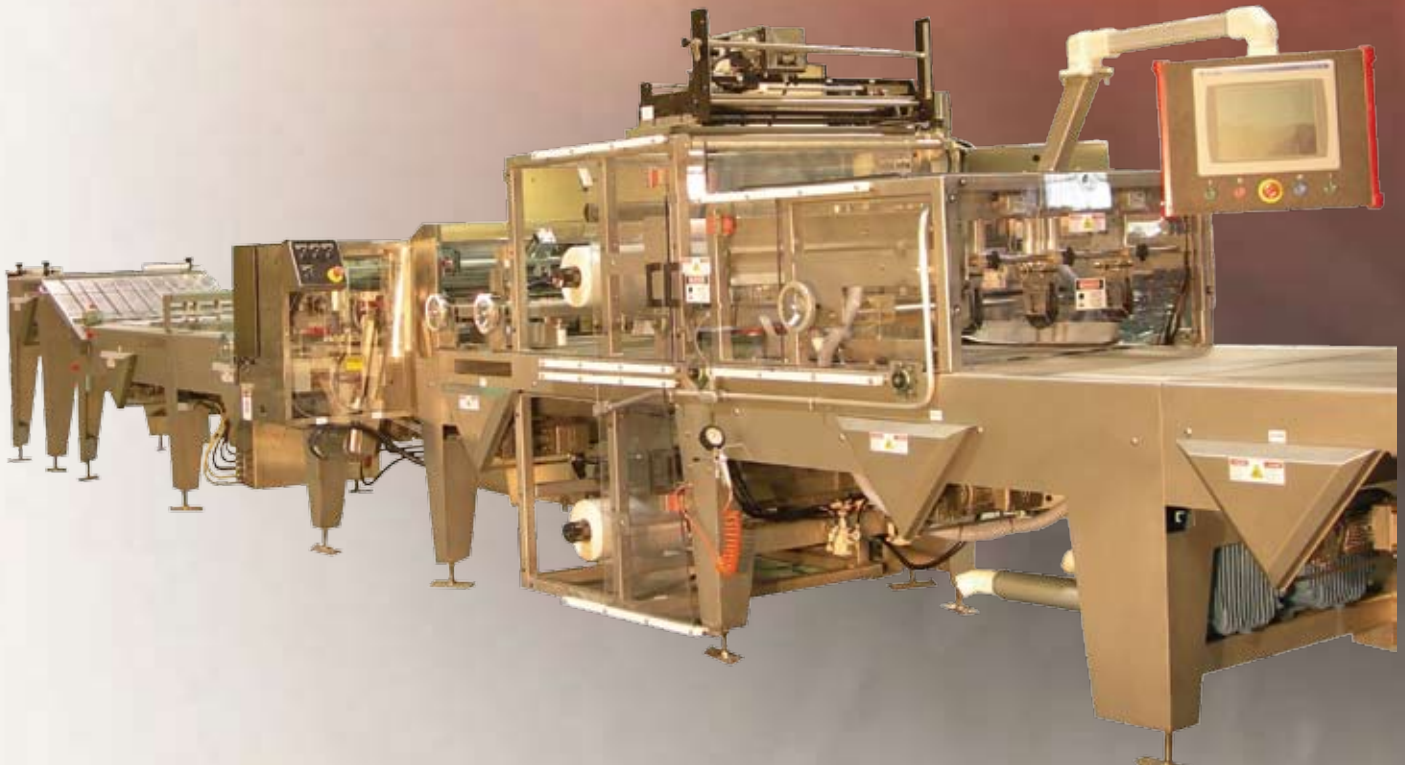




HS 40 BULK BUN PACKER



FEATURES & BENEFITS

- The HS 40 has been designed for efficient, high speed bulk bun packaging of up to 40 packages per minute.
- The HS 40 incorporates many new design features that improve package tightness and seal integrity that result in unmatched product freshness and extended shelf life.

HS 40 BULK BUN PACKER

MECHANICAL FEATURES

Freshness Evacuation and Tight Package

- Aligner side wheel system assures a tightly configured package
- The HS 40 incorporates a new vacuum evacuation system and above belt seal system that combine for the tightest, air tight package with the strongest seal integrity
- High speed "On the Fly" regrouping section provides a perfectly regrouped package configuration on the fly prior to film feed. This assists in providing a tight package.

High Speed Design

- Variable speed infeed spread and accumulation conveyors for even product distribution and lane filling
- Gentle collapsing cup grouping gate provides damage free hold-down. Individual control of each lane reduces pressure and indexing errors.
- Efficient belt drive side guides provide "on-the-fly" regrouping
- Smooth product transfer points for high speed product control
- Precise temperature control system on the side seals and cross seal
- Above belt side sealing system allows for higher speeds through the sealing section

New Improved Seal Technology

- New above the belt side seal technology allows for significantly increased package size flexibility
- New dual seal side seal insures outstanding seal quality
- New Bead Weld Cross Seal and Cut System provides the strongest seal available while eliminating high maintenance seal bars. The cutting system requires no knife.

Low Maintenance, Sanitary Design

- The HS 40 has an angular, laser cut steel-it-steel frame. The angular design prevents sanitation issues caused by contaminant frame shelving. The laser cut steel frame is durable, low maintenance, and is provided with a smooth, easy to clean surface.
- Close-coupled, independent VFD drives eliminate high maintenance chain and sprocket sequence drives that traditionally run the length of the machine. The underside of the HS 40 is totally open with simplifies sanitation and maintenance.

Product Flexibility

- The HS 40 is designed for easy product changeover including "quick change" lane adjustment.
- Easily adjustable multi-way conveyor lane guides in the grouper/indexing area for reduced changeover time.
- Low film alarm and change-out indicator. Tool-less film change with expanding film core clamps.
- A variety of slicing options including single and dual through slice, hinge/web slice, and top slice. Each slicer is designed for easy changeover.
- A variety of package configurations are available including single center seal and dual center.



Accumulation Conveyor and Slide



Adjustable Lane Guide System



Collapsing Cup Grouping Gate



Driven Side Belt Regrouper



Clear Under Frame Design



Above Belt Side Seal and Center Seal



One Piece Knife and Seal System



Pneumatic Film Roll Arms



HS 40 BULK BUN PACKER

ELECTRICAL FEATURES

- Allen Bradley operator interface provides the operator with machine performance, production data and alarm screens for easy trouble shooting. Maintenance personnel have access to a screen menu for timing adjustments, counter, valves, etc. which are protected via security access codes.
- Digital temperature readout and adjustment
- Allen Bradley pushbuttons for:
 - Two-button start
 - Stop
 - Emergency stop
 - Master relay control
- NEMA 12 machine mounted electrical enclosure (painted steel) including:
 - Main disconnect switch
 - Full voltage magnetic NEMA rated starters
 - Allen Bradley PLC
 - Allen Bradley inverters



Operator Interface



Machine Mounted Electrical Panel

OPTIONS

- Stainless steel frame option
- PLC other than Allen Bradley
- CE electrical package
- Stainless steel machine mounted electrical enclosure
- Single band slicer
- Dual band slicer
- Hinge slicer
- Top slicer
- Semi-automatic hone for band slicers
- Center seal with off-center capability
- Dual center seal
- Film printer
- Automatic basket loader
- Package connecting conveyors
- Basket feed conveyors
- Tool kit
- Spare parts kit



Dual Band Slicer

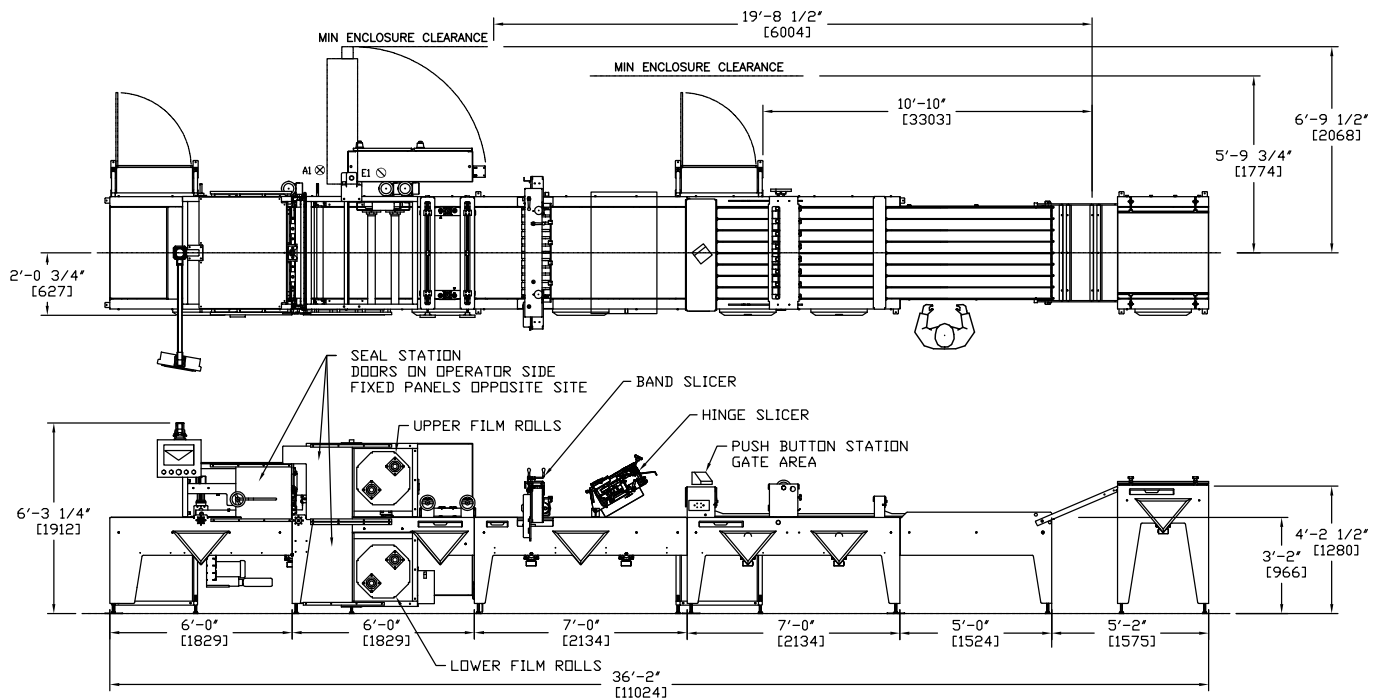
SPECIFICATIONS

- Approximate main power - 39 KVA
- Control power - 24VDC
- Air requirements - 22 SCFM @ 80 PSIG



HS 40 BULK BUN PACKER

DIMENSIONAL DRAWING



Left Hand Machine Shown



Headquarters:
2115 West Laburnum Avenue
Richmond, Virginia 23227
Tel: 1-800-225-3771
or 804-355-7961
Fax: 1-804-342-9724
www.amfbakery.com

Europe Office:
West Park Ring Road
Leeds LS16 6QQ
England
Tel: 44-1132-787110
Fax: 44-1132-741415
sales@amfbakery.com

FOR MORE INFORMATION PLEASE CALL YOUR ACCOUNT MANAGER OR

1-800-BAKERS-1
www.amfbakery.com

Free Manuals Download Website

<http://myh66.com>

<http://usermanuals.us>

<http://www.somanuals.com>

<http://www.4manuals.cc>

<http://www.manual-lib.com>

<http://www.404manual.com>

<http://www.luxmanual.com>

<http://aubethermostatmanual.com>

Golf course search by state

<http://golfingnear.com>

Email search by domain

<http://emailbydomain.com>

Auto manuals search

<http://auto.somanuals.com>

TV manuals search

<http://tv.somanuals.com>