



1073 & 1084 Channel Amplifier

User Guide

527-341
Issue 3

© 2004 AMS Neve plc own the copyright of all information and drawings contained in this manual which are not to be copied or reproduced by any means or disclosed in part or whole to any third party without written permission.

As part of our policy of continual product improvement, we reserve the right to alter specifications without notice but with due regard to all current legislation.

Disclaimer: The information in this manual has been carefully checked and is believed to be accurate at the time of publication. However, no responsibility is taken by us for inaccuracies, errors or omissions nor any liability assumed for any loss or damage resulting either directly or indirectly from use of the information contained within it.

HEAD OFFICE

AMS NEVE PLC • BILLINGTON ROAD • BURNLEY
LANCS BB11 5UB • ENGLAND
TELEPHONE: +44 (0) 1282 457011 • FAX: +44 (0) 1282 417282

LONDON OFFICE

TELEPHONE: +44 (0) 20 7916 2828 • FAX: +44 (0) 20 7916 2827

NORTH AMERICAN OFFICES

AMS NEVE INC., NEW YORK
TEL: +1 (212) 965 1400 • FAX: +1 (212) 965 9306
AMS NEVE INC., HOLLYWOOD
TEL: +1 (818) 753 8789 • FAX: +1 (818) 623 4839

e-mail: enquiry@ams-neve.com
<http://www.ams-neve.com>

Contents

Introduction	1
High Pass Filter (resistor modification)	1
Important Note	1
Installation	2
Dimensions	3
Power Requirements	3
Mains Supply (rack units)	4
DC Power Supply Indicators (rack units)	4
Phantom Power	4
Output Level Control	4
Connector Details	5
Amplifier Controls	6
1073 Module	6
1084 Module	7
Specifications	8
1073 and 1084 Modules	8
Recall Sheets	9
1073 - Vertical Module	9
1073 - Horizontal Module	10
1084 - Vertical Module	11
1084 - Horizontal Module	12
Service Information	13
Schematic Drawing Index - 1073/1084 Racks	13
Schematic Drawing Index - 1073 Module	13
Schematic Drawing Index - 1084 Module	14

Introduction

These 45 series modules are the same as the original designs, and contain all of the original components.

1073 Channel Amplifiers

These very popular sounding mic pre's are considered by many to capture the very essence of the Neve sound. In manufacture since the early 1970s, the Class A design offers 3 bands of EQ with one fixed high frequency and a high pass filter.

1084 Channel Amplifiers

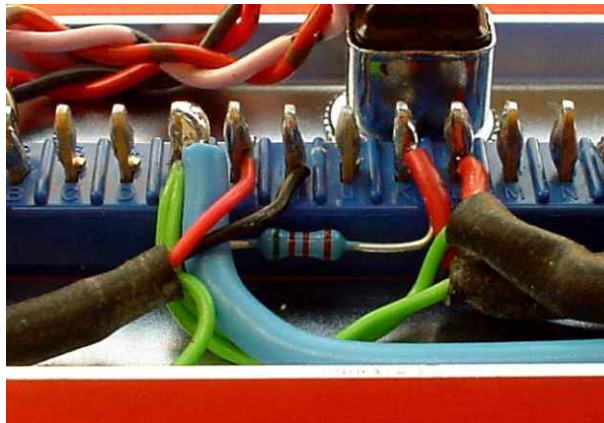
Based on the same technology as the 1073s, the 1084s again deliver the unique sound and quality of Neve. However, the 1084s offer additional features, including 3 switchable EQ bands with cut and boost, a high Q for presence and low pass/high pass filters.

High Pass Filter (resistor modification)

Important Note


The high pass filter in both the 1073 & 1084 modules is a passive design and as such must be correctly terminated to achieve a maximally flat response.

In order to achieve this there is a 5k Ω resistor fitted inside the module on the back connector between pin E (0v) and pin K (fader send) see diagram below:



In situations where the **fader connection is not used** (most Neve 45 series consoles except BCM10's) then the resistor remains in place.

In situations where the **fader connection is used** (BCM10's and AMS Neve 1073/1084 racks) then the 5k Ω resistor should be disconnected and replaced with a fader or potentiometer whose value is 4k7 / 5k ohms.

 *All modules which leave the factory with either a 3U or 5U rack unit will have the 5K1 resistor removed.*

Failure to do so will result in incorrect levels and uneven frequency response.

Installation

The 1073s and 1084s are available as stand-alone modules, or in a choice of two housings.

The 3U rack houses two modules mounted horizontally in a 19" rack-mounting unit.

The 5U rack houses eight modules mounted vertically in a 19" rack-mounting unit.

Both have rear panels with XLRs for transformer balanced I/O.

The 3U rack rear panel has a fused, voltage selector IEC mains input connector. The 5U rack has a free standing AC supply with a fused, voltage selector IEC mains input connector and connects to the rack via a connector and a 1.5 meter cable.

Modules of any combination can be fitted into a rack unit.



Example: 5U Rack fitted with two 1073 modules and six 1084 modules

Dimensions

Stand-alone Modules	Width mm (inches)	Height mm (inches)	Depth mm (inches)	Approx. Weight kg (lbs)
1073 Module	45 (1.8)	222 (8.75)	254 (10)	2.5 (5.5)
1084 Module	45 (1.8)	222 (8.75)	254 (10)	2.5 (5.5)

19" Rack Mounting	U	Depth mm (inches)	Height mm (inches)	Approx. Weight kg (lbs)
2 Module Version	3	405 (16)	133 (5.25)	11 (24.2) *
8 Module Version	5	405 (16)	222 (8.75)	30 (66) *

* Fully populated rack

Power Requirements

Rack Units	3U	5U
Rated Voltage	100-230V AC	100-230V AC
Rated Frequency	50-60 Hz	50-60Hz
Rated Current	0.5A Max	0.8A Max
Primary Protection Fuse:		
Operating Voltage	100-230V AC	100-230V AC
Fuse Rating and Type	T0.5A H 250V 20mm x 5mm CERAMIC	T1A H 250V 20mm x 5mm CERAMIC
Location	IEC Mains connector	IEC Mains connector
Secondary Protection Fuse:		
Output Voltage		24V DC
Fuse Rating and Type		T 2.0A L 250V 20mm x 5mm GLASS
Location		F1
Output Voltage		48V DC
Fuse Rating and Type		T 250mA L 250V 20mm x 5mm GLASS
Location		F2

Modules	Power
1073 Module	106mA 10mA at 24V DC. Negative Earth
1084 Module	106mA 10mA at 24V DC. Negative Earth

Mains Supply (rack units)

The 3U rack has a fused, voltage selector IEC mains input connector.

The 5U rack has a free standing AC supply with a fused, voltage selector IEC mains input connector and connects to the rack via a connector and a 1.5 meter cable.

The mains switch on the rear panel of the 3U rack unit is non-illuminating.

The CH (chassis) and 0V are linked internally.

DC Power Supply Indicators (rack units)

The red LED on the front panel of both 3U and 5U rack units indicates +24V power healthy when illuminated.

The green LED on the front panel of both 3U and 5U rack units indicates +48V power healthy when illuminated.

Phantom Power

Phantom power can be supplied to each module by pressing the phantom power switch on the front panel of the 3U or 5U rack. The LED in the switch will illuminate confirming that phantom power is supplied.

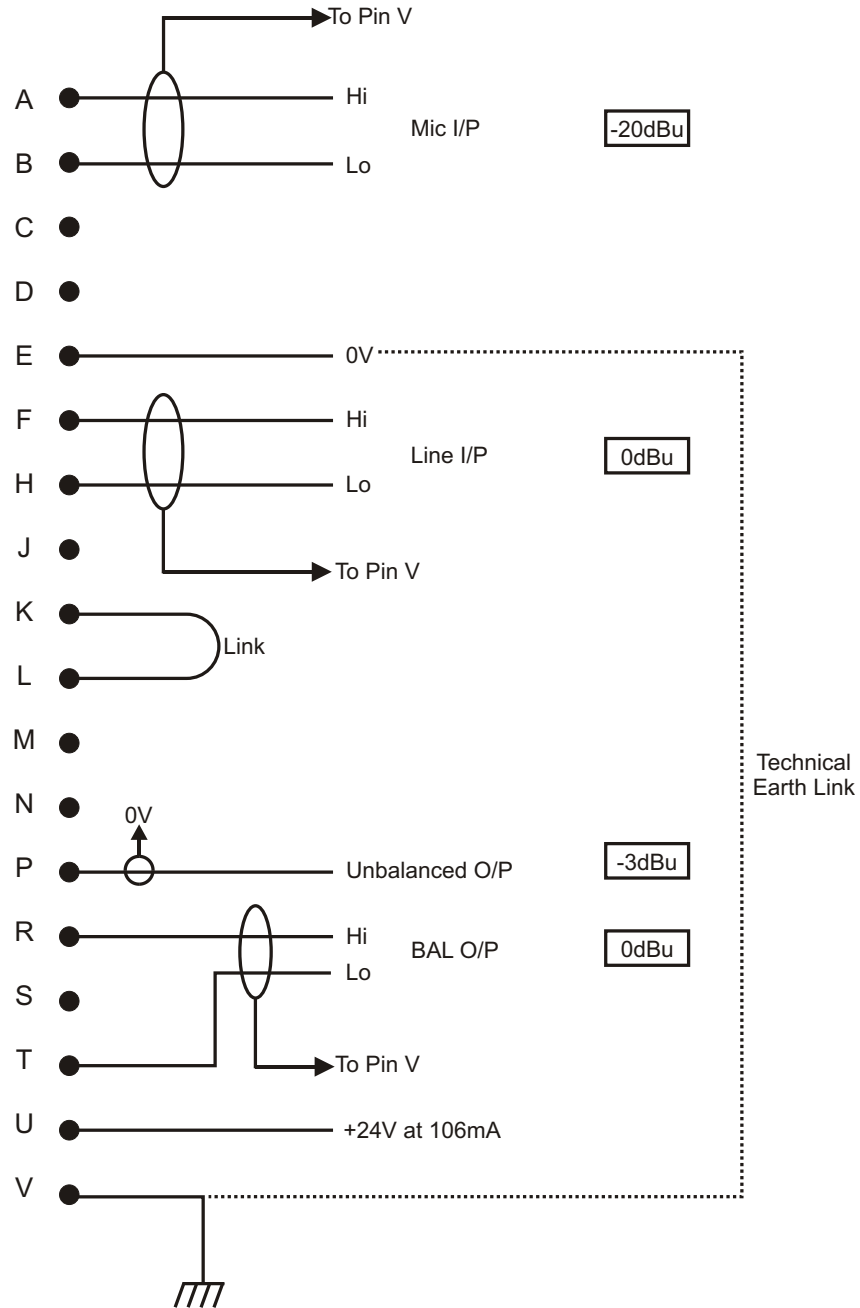
Output Level Control

Each channel has an independent Output Level Control. The control is post-input, post-EQ and pre-output. This control can reduce the level at the output.

When the Output Control is fully clockwise the output gain is unity. The output is 20dB down with the control in the mid-position.

Connector Details

Standalone 1073 & 1084 Module Wiring to 18 way Free Plug

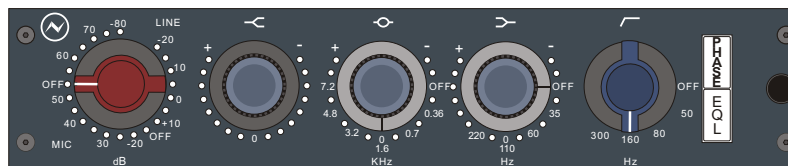


Amplifier Controls

1073 Module



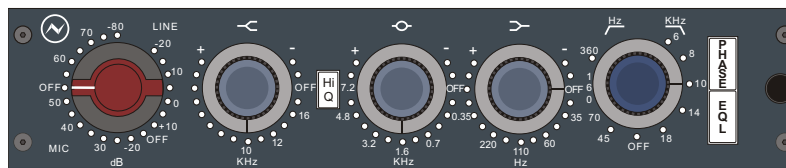
- High Frequency: Smooth +/-16dB fixed frequency shelving at 12kHz.
- Low Frequency: Smooth +/-16dB shelving with selectable frequencies of 35Hz, 60Hz, 110Hz & 220Hz.
- Mid Frequency: Smooth +/-18dB peaking, fixed 'Q' with, selectable centre frequencies of 0.36kHz, 0.7kHz, 1.6kHz, 3.2kHz, 4.8kHz & 7.2kHz.
- High Pass Filter: 18dB per octave slope, switchable between 50Hz, 80Hz, 160Hz & 300Hz.
- EQL Button: Switches the equaliser in or out of circuit.
- Phase Button: Gives 180° Phase change at Balanced Output.



1084 Module



- High Frequency: Smooth +/-16dB shelving with selectable frequencies of 10kHz, 12kHz and 16kHz.
- Low Frequency: Smooth +/-16dB shelving with selectable frequencies of 35Hz, 60Hz, 110Hz & 220Hz.
- Mid Frequency: Smooth +/-12dB or +/-18dB peaking with switchable 'High Q', selectable centre frequencies of 0.36kHz, 0.7kHz, 1.6kHz, 3.2kHz, 4.8kHz & 7.2kHz.
- High Pass Filter: 18dB per octave slope, switchable between 45Hz, 70Hz, 160Hz & 360Hz.
- Low Pass Filter: 18dB per octave slope, switchable between 6kHz, 8kHz, 10kHz, 14kHz, & 18kHz.
- EQL Button: Switches the equaliser in or out of circuit.
- Phase Button: Gives 180° Phase change at Balanced Output.



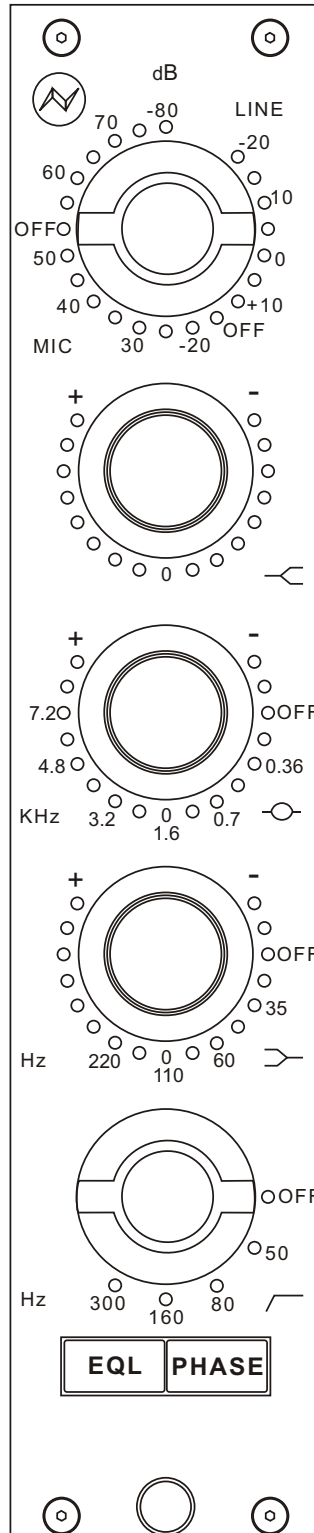
Specifications

1073 and 1084 Modules

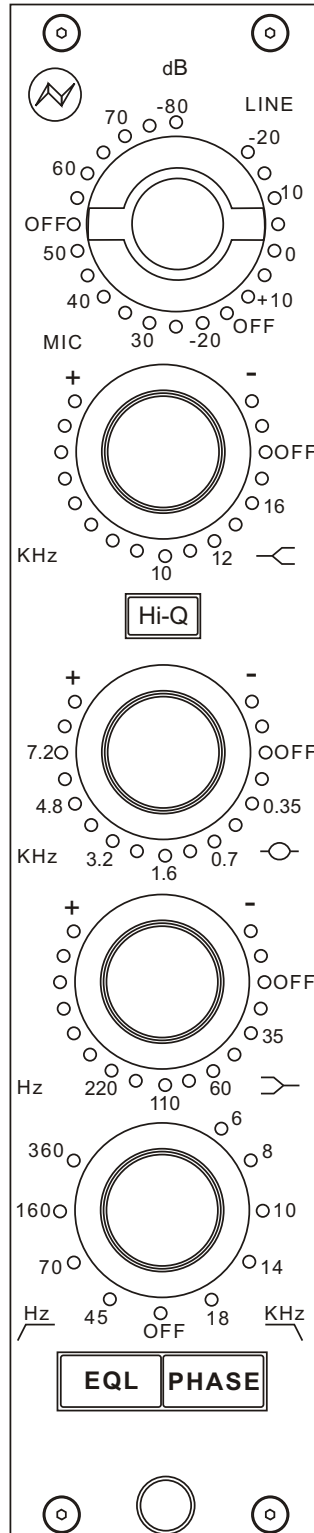
Microphone Input:	Input Impedance 300 Ω or 1200 Ω , gain +80db to +20dB in 5dB steps.
Line Input:	Input Impedance 10,000 Ω bridging, gain +20dB to -10dB in 5dB steps. Both inputs are transformer balanced and earth free.
Output:	Maximum output is $>+26$ dBu into 600 Ω . Output impedance is 75 Ω @1kHz. Output is transformer balanced and earth free.
Distortion:	Not more than 0.07% from 50Hz to 10kHz at +20dBu output (80kHz bandwidth) into 600 Ω .
Frequency Response:	+/-0.5dB 20Hz to 20kHz, -3dB at 40kHz Eq Out.
Noise:	Not more than -83dBu at all Line gain settings Eq In/Out (22Hz to 22kHz bandwidth). EIN better than -125dBu @ 60dB gain.

Recall Sheets

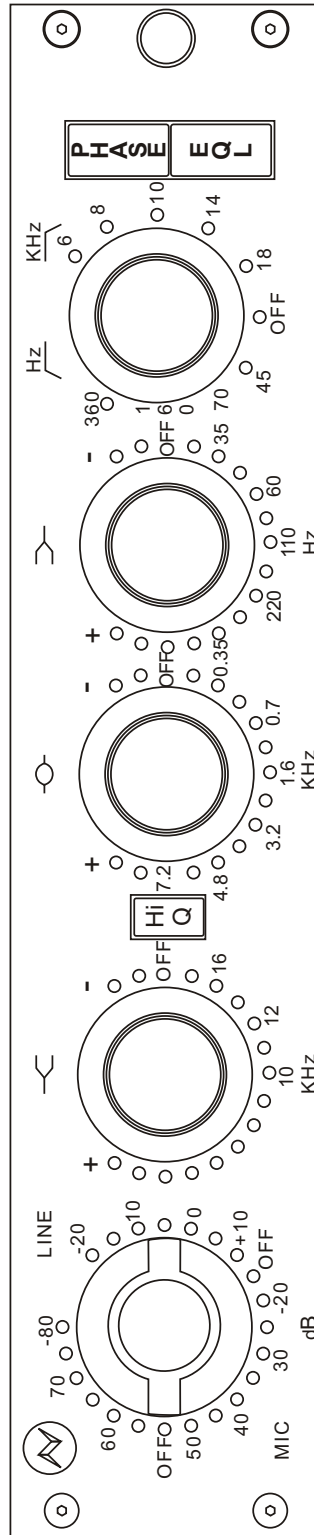
1073 - Vertical Module



1084 - Vertical Module



1084 - Horizontal Module



Service Information

Schematic Drawing Index - 1073/1084 Racks

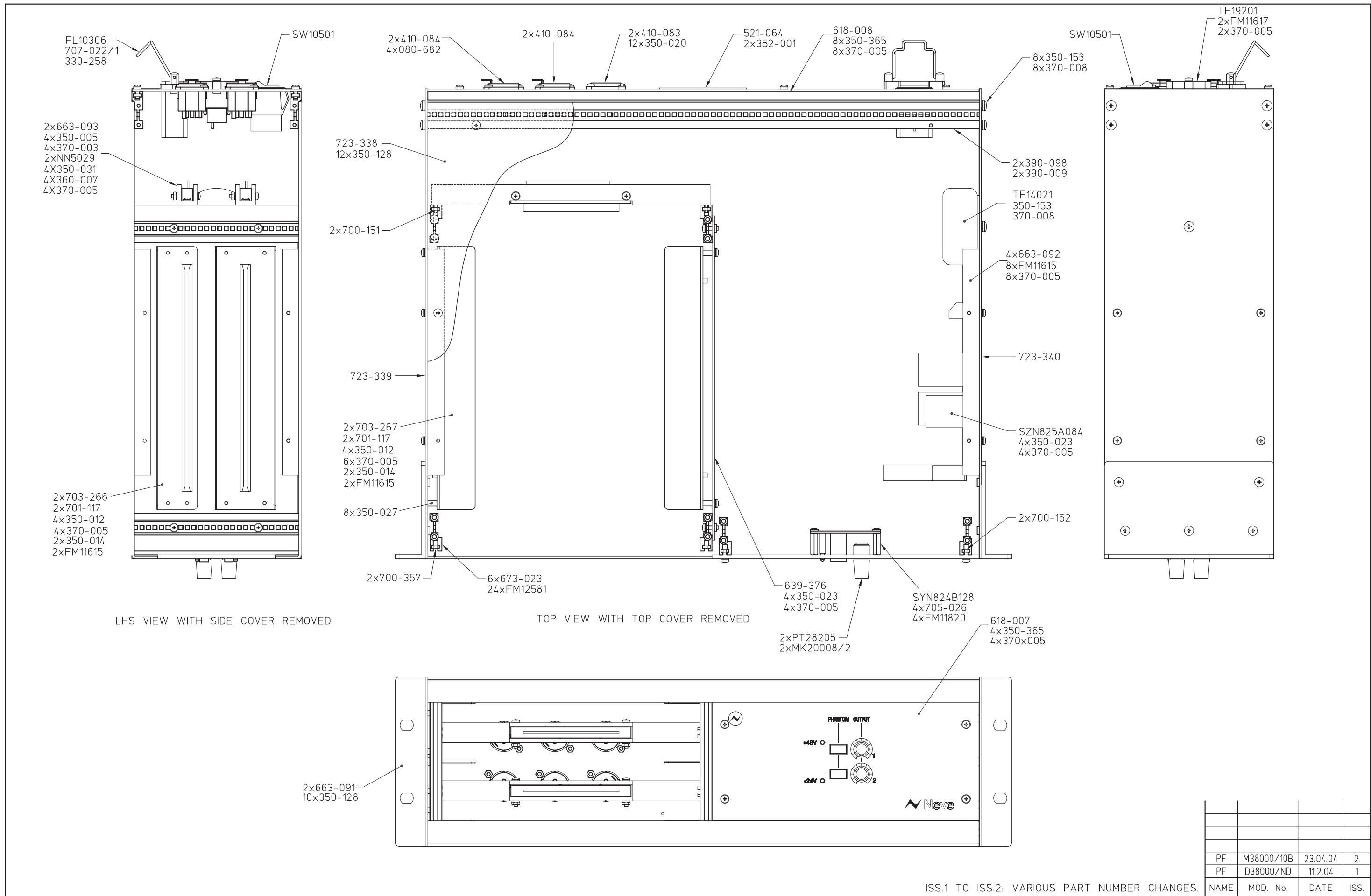
3U Horizontal Rack (AM5028)	AM5028 Assembly Drawing AM5028 Wiring Diagram
5U Vertical Rack (AM5033)	UNDER DEVELOPMENT

Schematic Drawing Index - 1073 Module

1073 Channel Amplifier (PL31073-C)	E10006 Block Diagram EH10023 Circuit Diagram
High Pass Filter (PL10182/C)	PL10182/C Assembly Drawing D/10019C Circuit Diagram
HF/LF EQ Frequency (PL10205)	PL10205 Assembly Drawing D/10042 Circuit Diagram
Presence Frequency (PL10211)	BA211 Assembly Drawing D/10048 Circuit Diagram
Mic Line Output (PL10283AV)	PL10283 Assembly Drawing EX10283 Circuit Diagram
Mic Amp/EQ Amp (PL10284)	PL10284 Assembly Drawing EX10284 Circuit Diagram
Sensitivity Switch (PL20033)	EK20033 Wiring Diagram
Low Frequency Switch (PL20065)	EK20065 Wiring Diagram
HP Filter Switch (PL20066)	EK20066 Wiring Diagram
Presence Switch (PL20105)	EK20105 Wiring Diagram

Schematic Drawing Index - 1084 Module

1084 Channel Amplifier (PL31084-C)	EB20039 Block Diagram EH10036 Circuit Diagram
High Pass Filter (PL10182/A)	PL10182/A Assembly Drawing D/10019A Circuit Diagram
Low Pass Filter (PL10194/A)	PL10194/A Assembly Drawing D10031/A Circuit Diagram
HF/LF EQ Frequency (PL10205)	See 1073 drawing section
Presence Frequency (PL10211/A)	PL10211/A Assembly Drawing D/10048/A Circuit Diagram
Mic Line Output (PL10283AV)	See 1073 drawing section
Mic Amp/EQ Amp (PL10284)	See 1073 drawing section
Sensitivity Switch (PL20033)	See 1073 drawing section
Low Frequency Switch (PL20065)	See 1073 drawing section
Presence Switch (PL20105)	See 1073 drawing section
High Frequency Switch (PL20106)	EK20106 Wiring Diagram
HP/LP Filter Switch (PL20107)	EK20107 Wiring Diagram



ISS.1 TO ISS.2: VARIOUS PART NUMBER CHANGES.

NAME	MOD. No.	DATE	ISS.
PF	M38000/10B	23.04.04	2
PF	D38000/ND	11.2.04	1

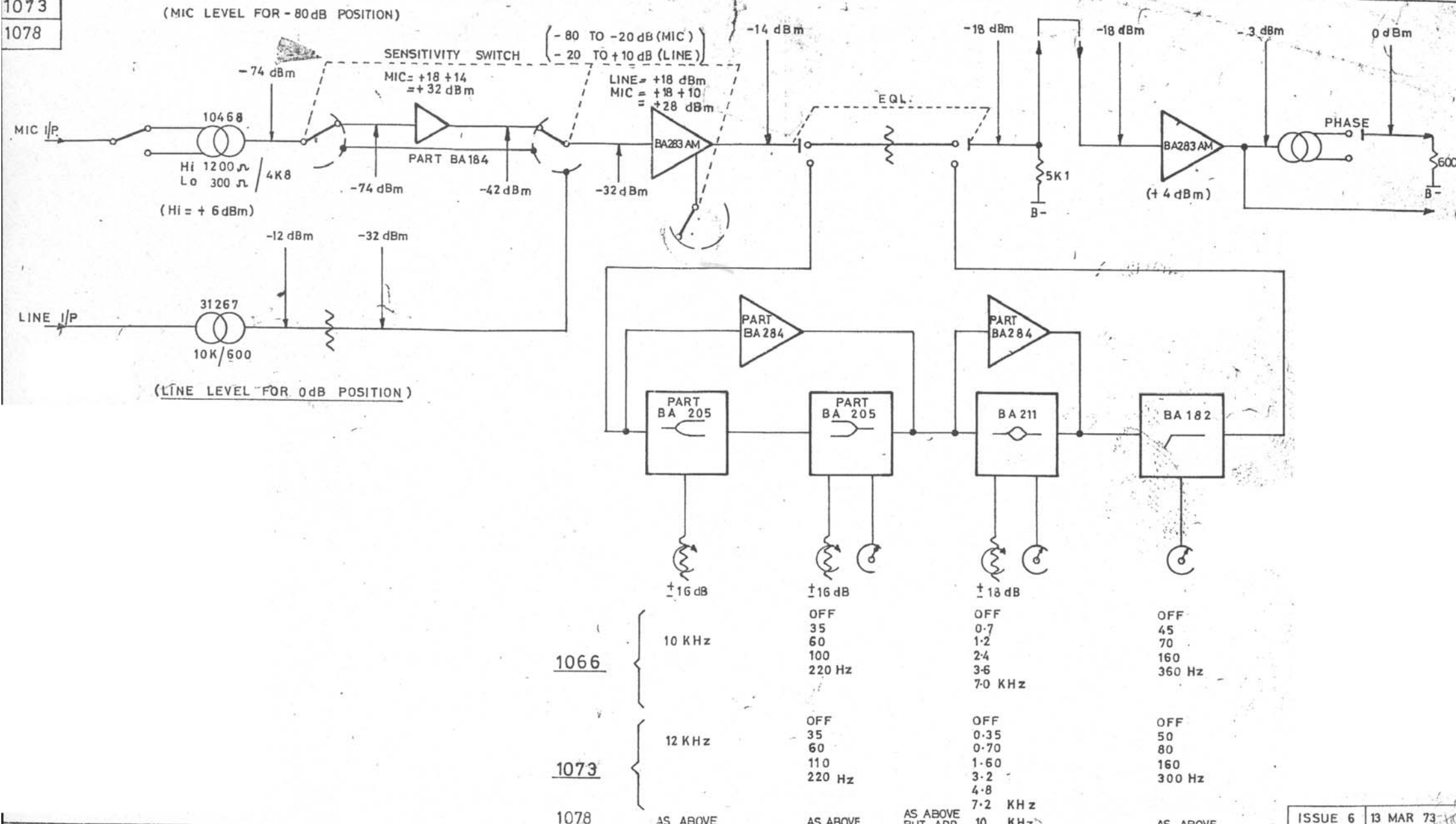
<p>THIRD ANGLE PROJECTION</p> <p>DRAWN TO B.S.308</p>	<p>AMS NEVE PLC. owns the copyright to this drawing. It must not be copied in whole or in part, used for manufacture or otherwise disclosed without prior written consent of the company. © AMS NEVE PLC.</p>	TITLE: 1073/1084 HORIZONTAL RACK				<p>DRG No.</p> <p>AM5028</p>	<p>SHT</p> <p>2</p>
		<p>SCALE 1:1</p>	<p>DRAWN</p> <p>PF</p>	<p>APP'D</p>			

Issue: 1

CABLE			FROM:-			ROUTING			TO:-		
Code	Type	Colour	Pin	Connector	Location	Signal	Length	Comment	Pin	Connector	Location
310-183	24/0.2	Green/Yellow	E	330-071	IEC				Stud	330-454	Safety Earth
310-183	24/0.2	Green/Yellow		330-069	Chassis				Stud	330-454	Safety Earth
310-047	16/0.2	Brown	L	330-071	IEC			Sleeve with	1A	330-071	Switch
310-052	16/0.2	Blue	N	330-071	IEC			WA12005	2A	330-071	Switch
		Yellow			TF14021				1	CN20013	Switch
		Yellow			TF14021				Centre	Solder	TF19201
310-052	16/0.2	Blue	1(1of2)	Solder	TF19201				2	330-071	Switch
		Black			TF14021				1(2of2)	Solder	TF19201
		Brown			TF14021				3	Solder	TF19201
		Green			TF14021				2	Solder	TF19201
		Blue			TF14021				4(1of3)	Solder	TF19201
310-046	16/0.2	Black	4(2of3)	Solder	TF19201				4(2of3)	Solder	TF19201
		Red			TF14021				4(3of3)	Solder	TF19201
		Orange			TF14021				6	Solder	TF19201
		Violet			TF14021				5	Solder	TF19201
		Grey			TF14021				7	Solder	TF19201
		White			TF14021				3	J1 (25VAC)	SZN825A084
		White			TF14021				4	J1 (25VAC)	
310-052	16/0.2	Blue	2		SZN825A084				Bolt	330-069	Chassis
310-031	7/0.2	Orange	1	420-691 Housing	CN2				2+3	solder via 6K8 Res's	Mic In Ch1 XLR
310-031	7/0.2	Orange	9	420-612 Contacts	SYN824B12 8				2+3	solder via 6K8 Res's	Mic In Ch2 XLR

1066
1073
1078

E/10006

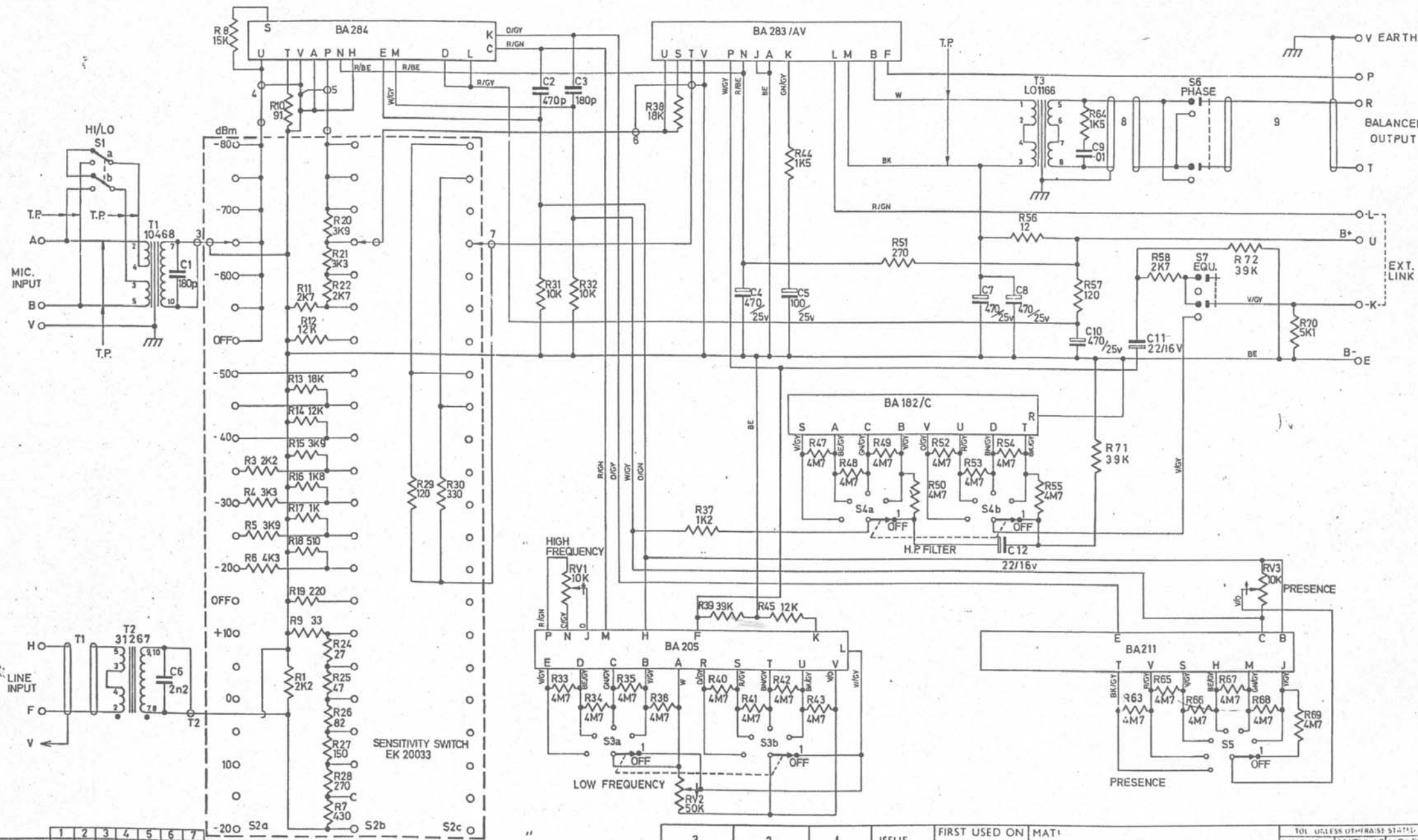


The Neve Group of Companies
TITLE CHANNEL AMPLIFIERS 1066, 1073, 1078

This drawing is the property of this company and may not be reproduced or disclosed to a third party without the permission of this company.

ISSUE 5	13.OCT.72	DATE 28.1.1970
ISSUE 4	16.2.72	DRAWING NUMBER E/10006
3. REDRAWN	2 NOV.1971	

ISSUE 6 13 MAR 73

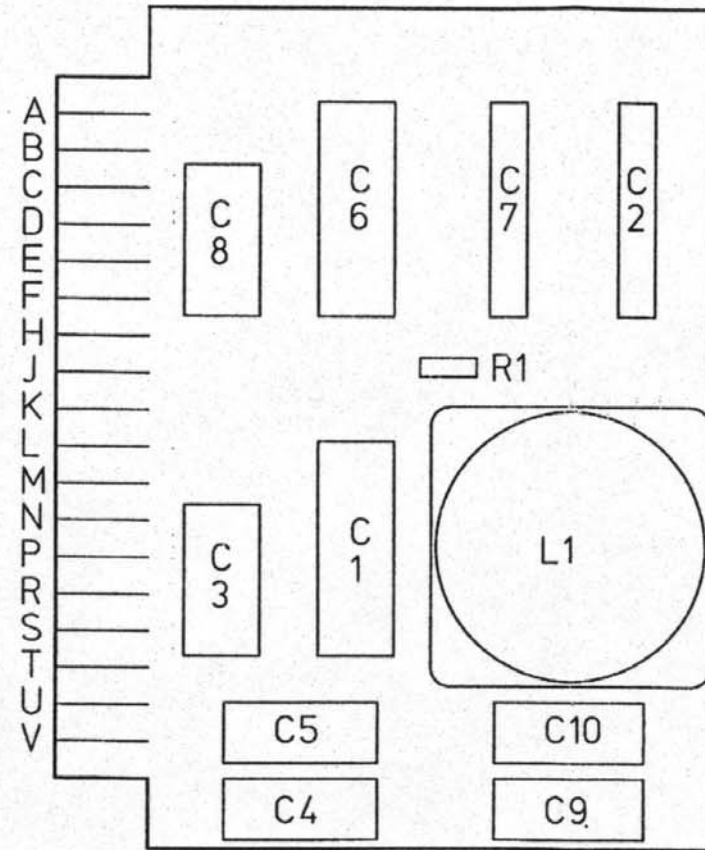


S3 RV2	1	2	3	4	5	6	7	
LOW FREQ.	OFF	35	60	110	220			SEE EK 20065
S4 H.P.F.	OFF	50	80	160	300			SEE EK 20066
S5 RV3	OFF	36	7	1.6	3.2	4.8	7.2	SEE EK 20105
PREFERENCE								

NOTE: ELECTROLUBE P.C.B. CONNECTORS BEFORE INSERTING BOARDS.

3	2	1	ISSUE	FIRST USED ON	MAT
17.5.74.	30.11.73	6/8/73	DATE	DRN. AHL	FINISH
10907	10816		CHANGE NOTE NO	TRACED D.G.J.	TITLE
			CHECKED		1073 CHANNEL AMP

TOOL USES OTHER THAN STAMPING	
LINEAR	ANGULAR HOLES
DIMENSIONS IN SCALE	
DRG. NO. EH 10023	
1973	



PF	D38000/LS	23.09.03	1
NAME	MOD. No.	DATE	ISS.

THIRD ANGLE PROJECTION



DRAWN TO B.S.308

AMS NEVE PLC. owns the copyright to this drawing. It must not be copied in whole or in part, used for manufacture or otherwise disclosed without prior written consent of the company.
© AMS NEVE PLC.

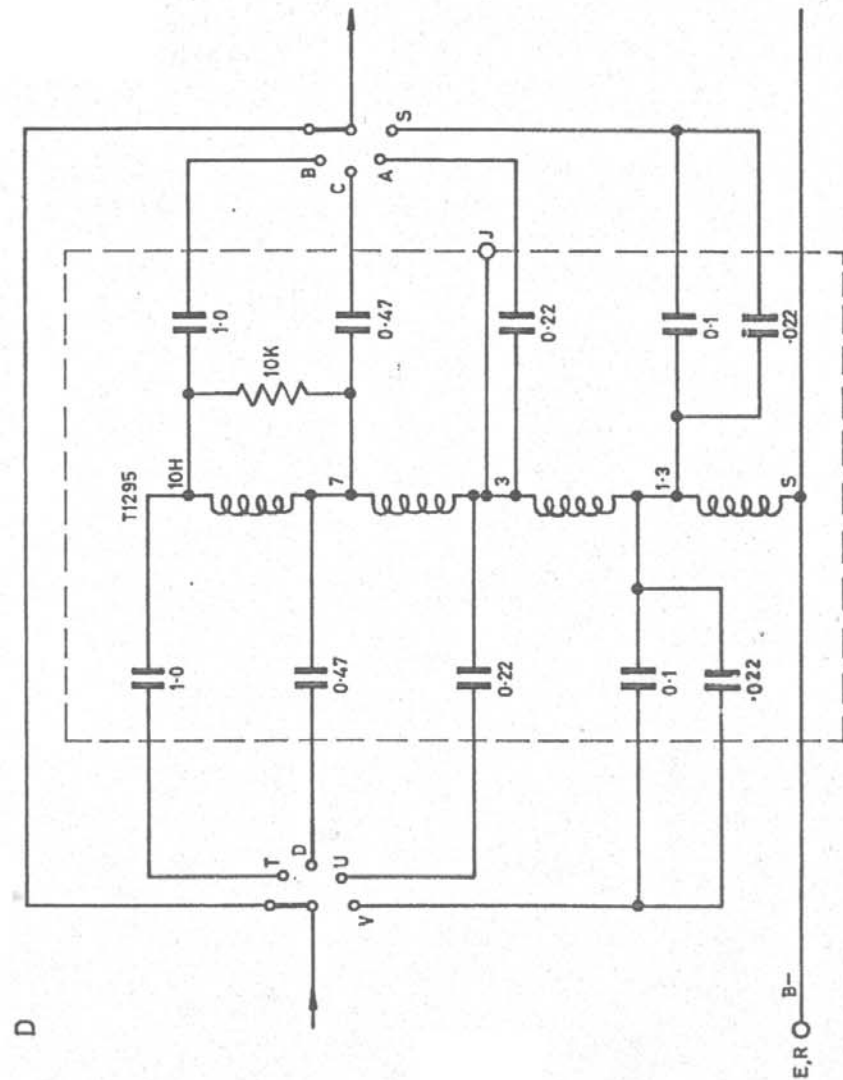
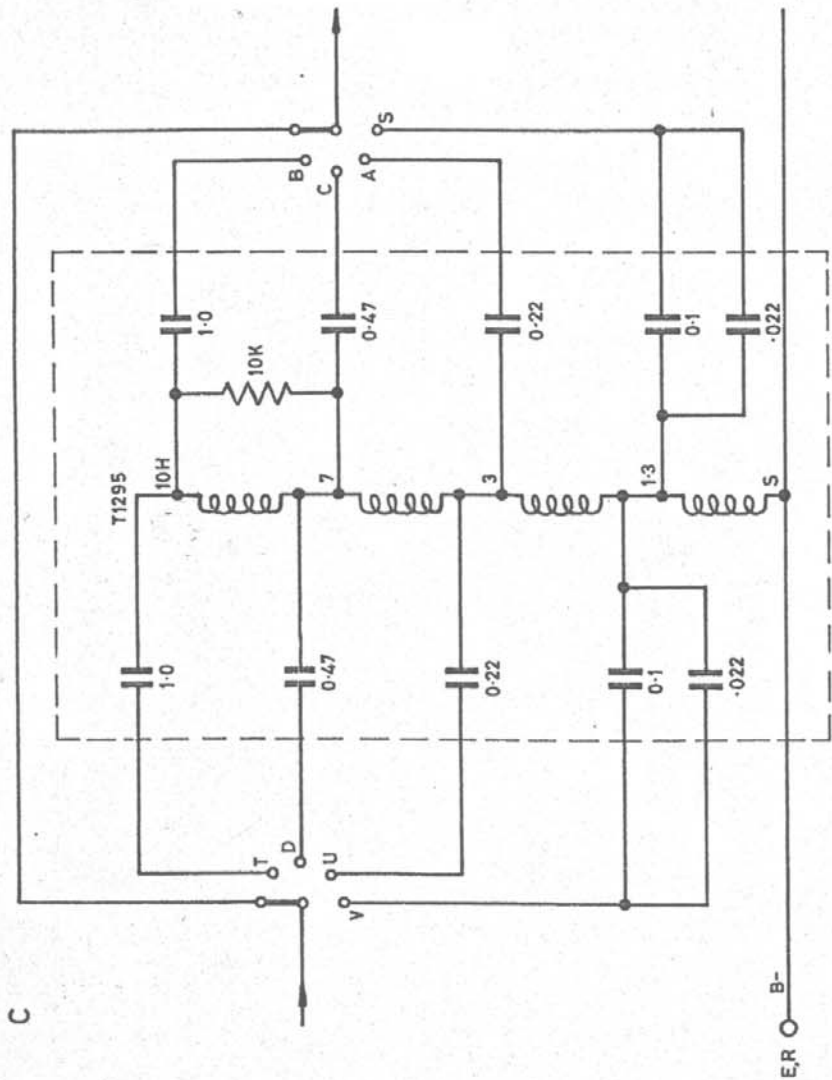
TITLE: HIGH PASS FILTER PCB ASSEMBLY



DRAWN	APP'D	DATE
	NGA	23.09.03

AMS NEVE PLC. BILLINGTON ROAD,
BURNLEY. LANCs. BB11 5UB. ENGLAND.
TEL. (01282) 457011 FAX. (01282) 417282.

DRG No.	SHT
PL10182C	1



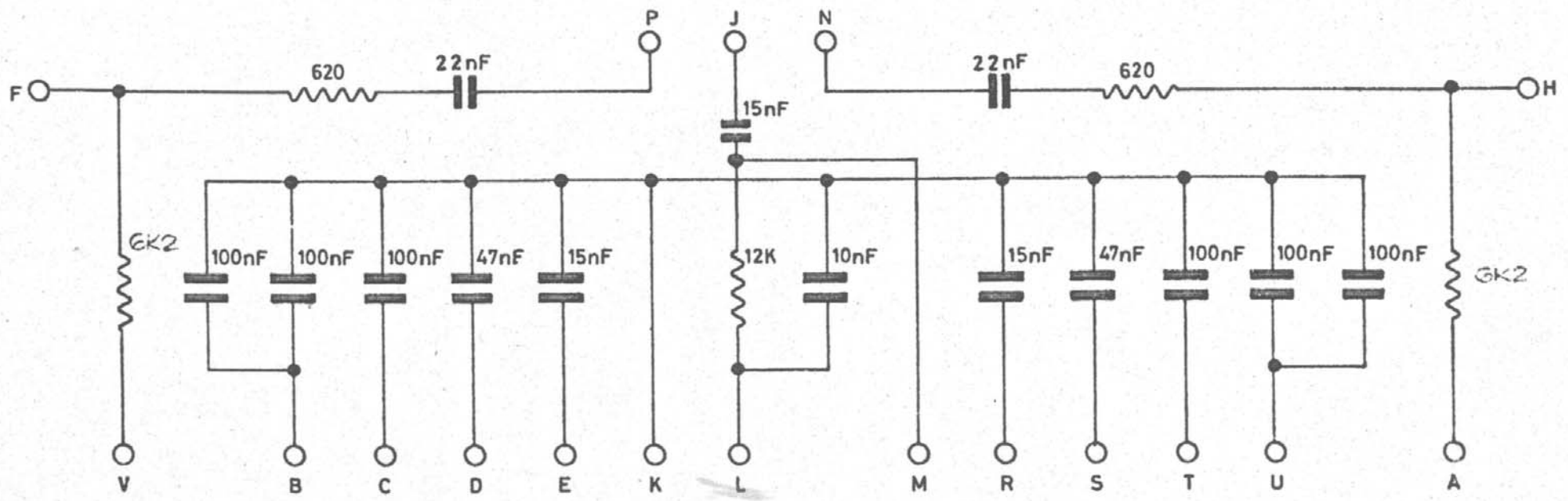
The Neve Group of Companies

TITLE B182 c&d

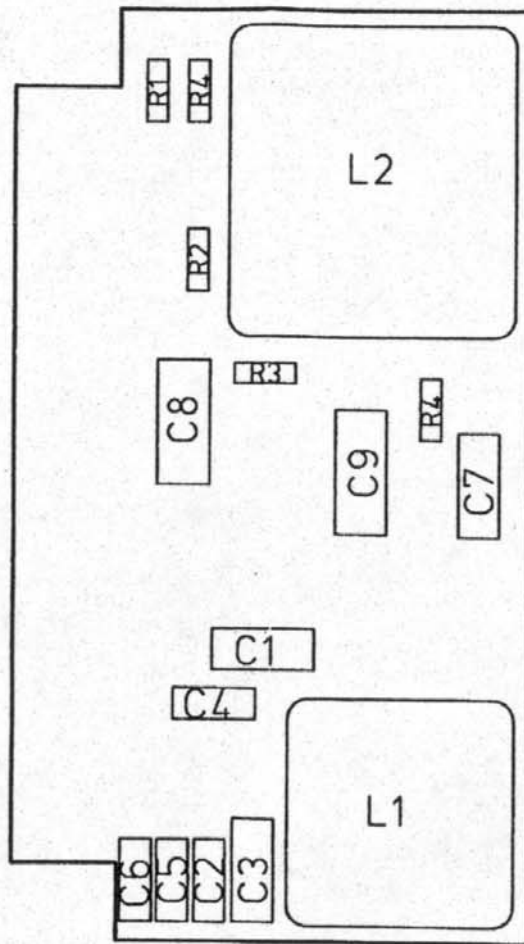
This drawing is the property of this company and may not be reproduced or disclosed to a third party without the permission of this company.

A	19/7/71	10.299
---	---------	--------

DATE	21/10/70
DRAWING NUMBER	D/10,019 c&d



	The Neve Group of Companies	This drawing is the property of this company and may not be reproduced or disclosed to a third party without the permission of this company.	C 7-3-79	80142	DATE 24 FEB 71	
TITLE B 205 CIRCUIT DIAGRAM			B 18-5-72	10513	DRAWING NUMBER D/10,042	
			A 12/2/71	10 241		



PF	D38000/LS	23.09.03	1
NAME	MOD. No.	DATE	ISS.

THIRD ANGLE PROJECTION



DRAWN TO B.S.308

AMS NEVE PLC. owns the copyright to this drawing. It must not be copied in whole or in part, used for manufacture or otherwise disclosed without prior written consent of the company.
© AMS NEVE PLC.

TITLE: PRESENCE FREQUENCY PCB ASSEMBLY



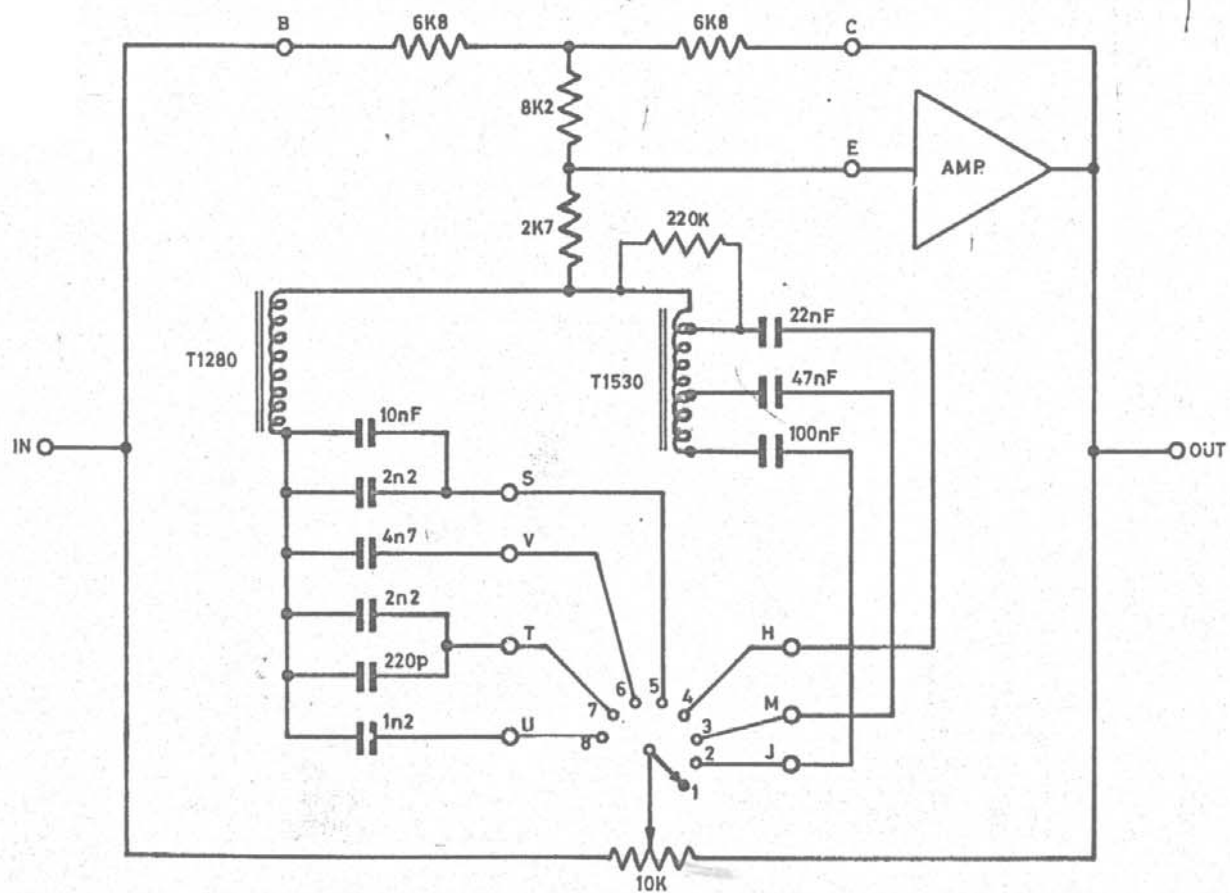
Download from www.Somanuals.com. All Manuals Search And Download.

SCALE 1:1

DRAWN	APP'D	DATE
PF	<i>[Signature]</i>	23.09.03

AMS NEVE PLC. BILLINGTON ROAD,
BURNLEY. LANCs. BB11 5UB. ENGLAND.
TEL (01282) 452011 FAX (01282) 472002

DRG No.	SHT
DL 10211	1



- SW. POSNs.
1. OFF
 2. 0.36 KHz
 3. 0.7 KHz
 4. 1.6 KHz
 5. 3.2 KHz
 6. 4.8 KHz
 7. 7.2 KHz
 8. 10.0 KHz

4 13-6-75-11241 GP

 The Neve Group of Companies

TITLE BA211

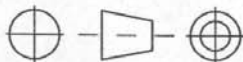
This drawing is the property of this company and may not be reproduced or disclosed to a third party without the permission of this company.

C	16/11/71	10,364	DATE	21/12/70
B	8/11/71	10,364	DRAWING	D/10,048
A	20/5/71	10,217	NUMBER	



PF	D38000/LS	24.09.03	1
NAME	MOD. No.	DATE	ISS.

THIRD ANGLE PROJECTION



DRAWN TO B.S.308

AMS NEVE PLC. owns the copyright to this drawing. It must not be copied in whole or in part, used for manufacture or otherwise disclosed without prior written consent of the company.
© AMS NEVE PLC.

TITLE: MIC/LINE OUTPUT PCB ASSEMBLY

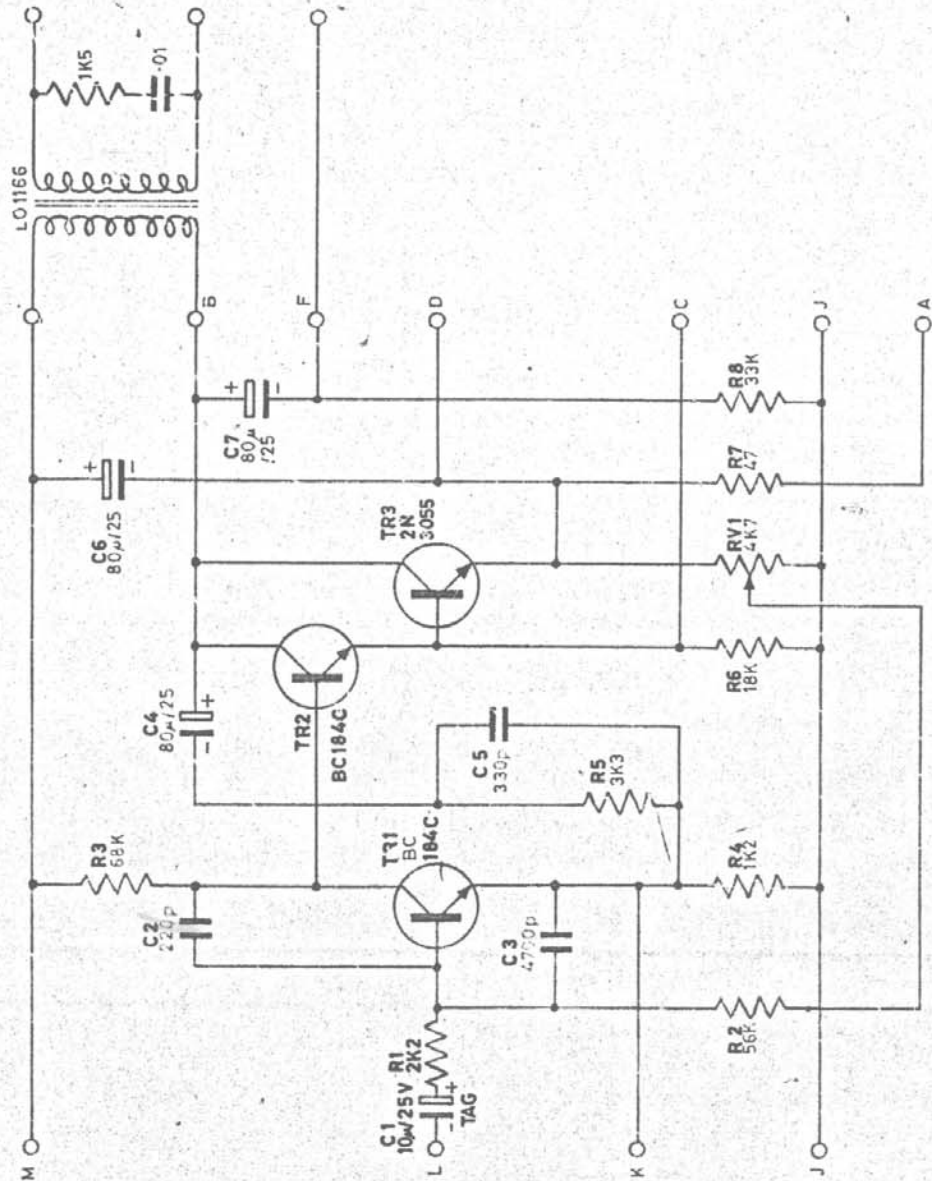
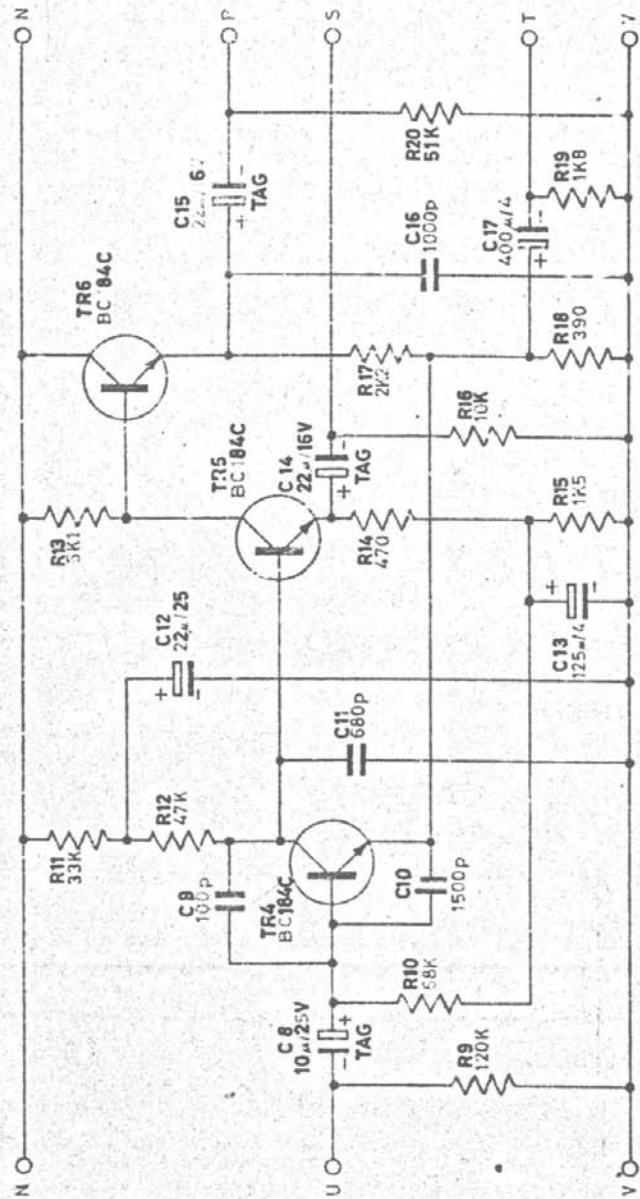
DRAWN	APP'D	DATE
	<i>[Signature]</i>	24.09.03

AMS NEVE PLC. BILLINGTON ROAD,
BURNLEY. LANCs. BB11 5UB. ENGLAND.
TEL. (01282) 457011 FAX. (01282) 417282.



DRG No. SHT

PL10283AV 1



D 23-11-72
10547

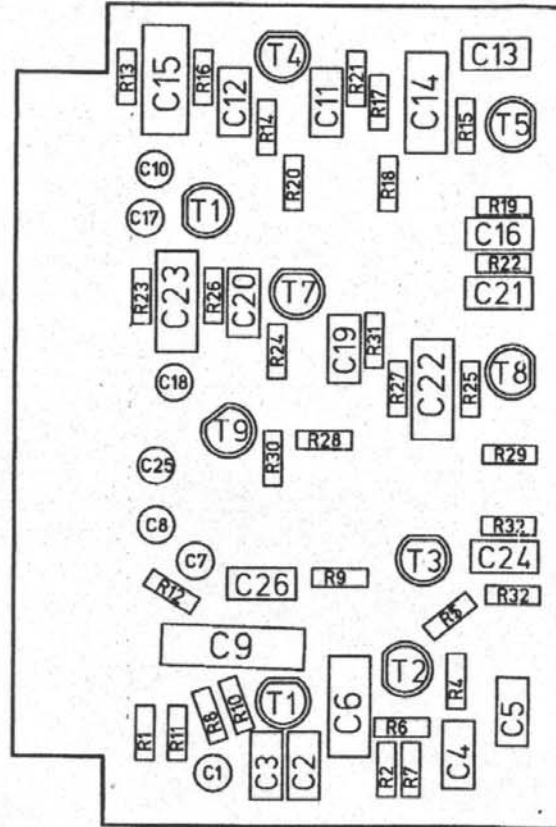


The Neve Group of Companies

This drawing is the property of this company and may not be reproduced or disclosed to a third party without the permission of this company.

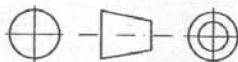
C	15/11/72	10565	DATE	15/11/71	CN 10361
B	7/16/72	10518	DRAWING		
A	8-3-72	10772	NUMBER		

EX/10 283



PF	D38000/LS	23.09.03	1
NAME	MOD. No.	DATE	ISS.

THIRD ANGLE PROJECTION



DRAWN TO B.S.308

AMS NEVE PLC. owns the copyright to this drawing. It must not be copied in whole or in part, used for manufacture or otherwise disclosed without prior written consent of the company.
© AMS NEVE PLC.

TITLE: MIC AMP/EQ AMP X 2 PCB ASSEMBLY



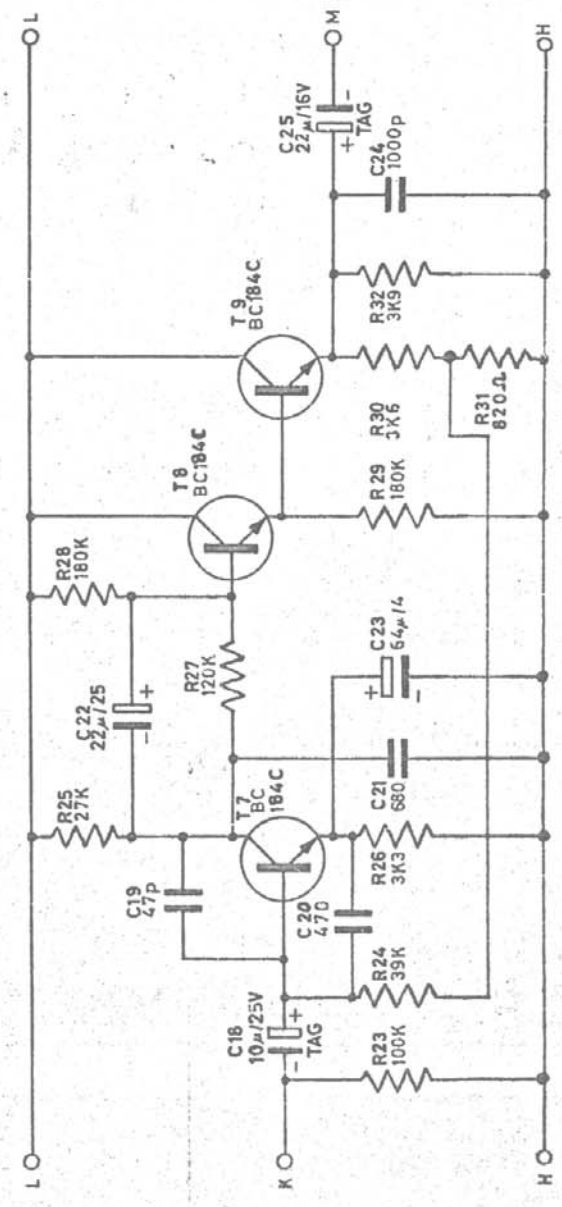
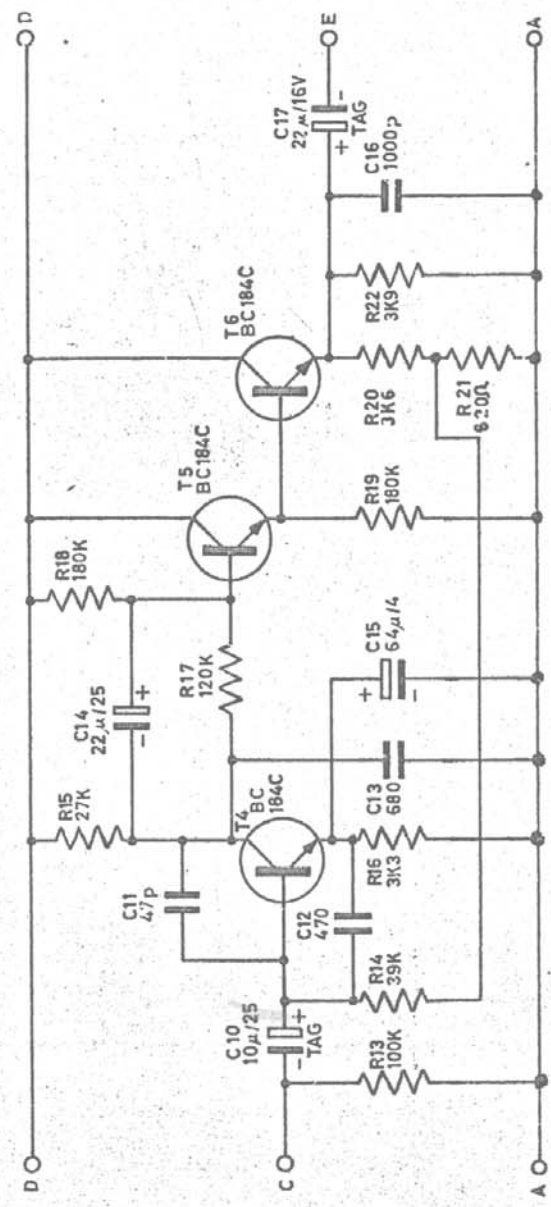
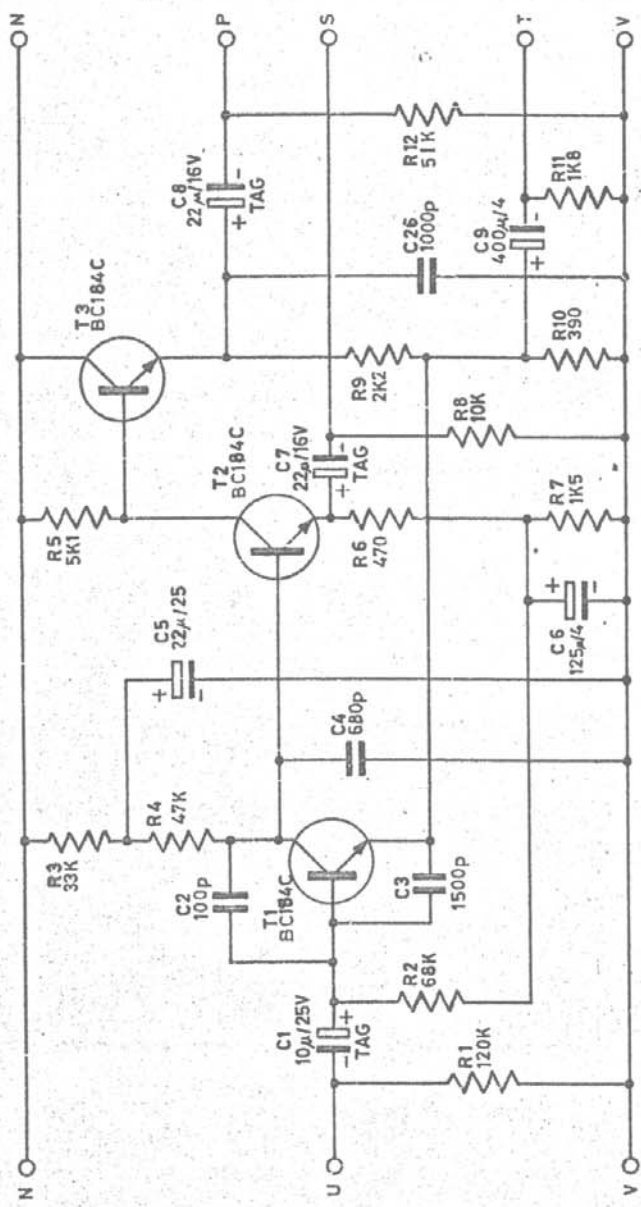
Download from www.Somanuals.com. All Manuals Search And Download.

SCALE 1:1

DRAWN	APP'D	DATE
PF	<i>[Signature]</i>	23.09.03

AMS NEVE PLC. BILLINGTON ROAD,
BURNLEY, LANCs. BB11 5UB. ENGLAND.
TEL. (01282) 457011 FAX. (01282) 417282.

DRG No.	SHT
PL10284	1



The Neve Group of Companies

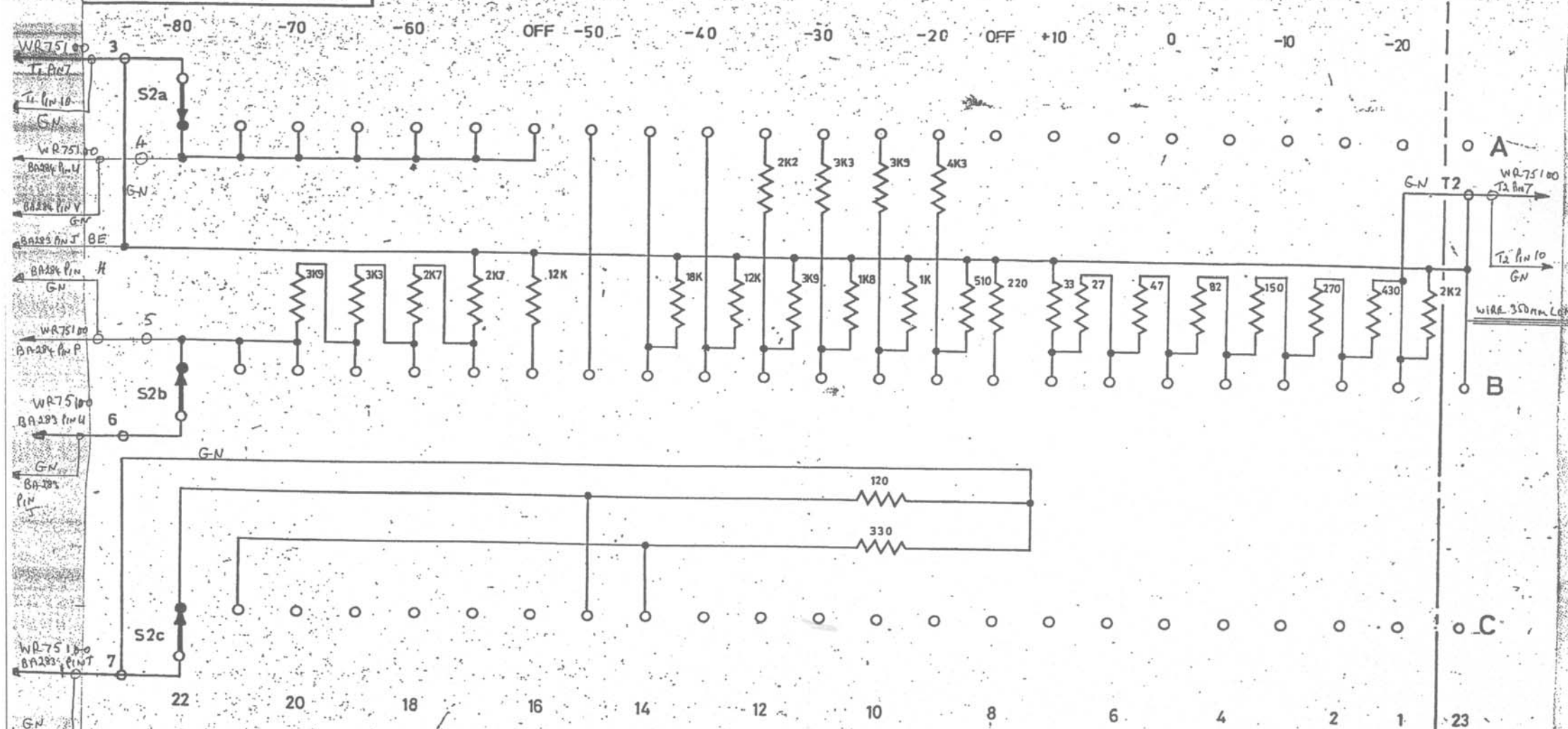
TITLE BA284

This drawing is the property of this company and may not be reproduced or disclosed to a third party without the permission of this company.

C	15/11/72	10565	DATE	15/11/71	CH 10,362
B	8-3-72	10473	DRAWING		
A	8-12-71	10.402	NUMBER	EX/10,284	

EK 20033

Rupert Neve & Company Ltd. own the copyright of this drawing which is not to be copied, reproduced or disclosed, in part or whole, to a third party without written permission.

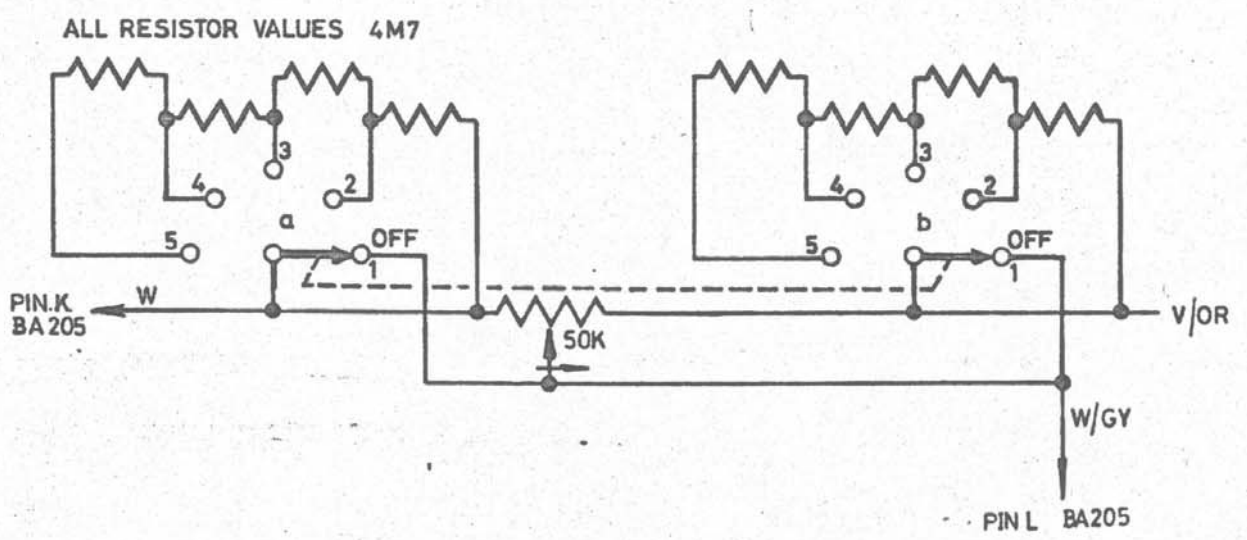
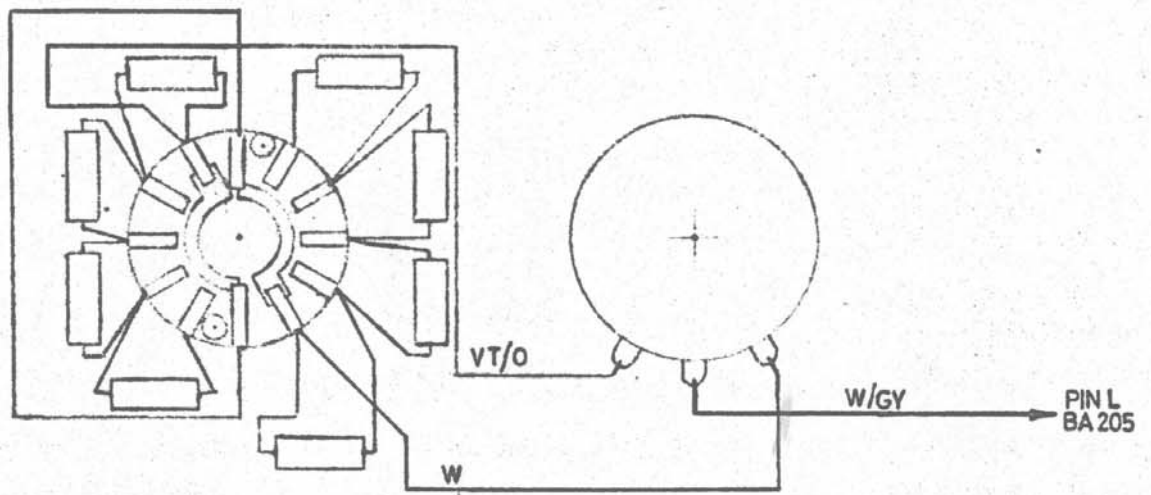
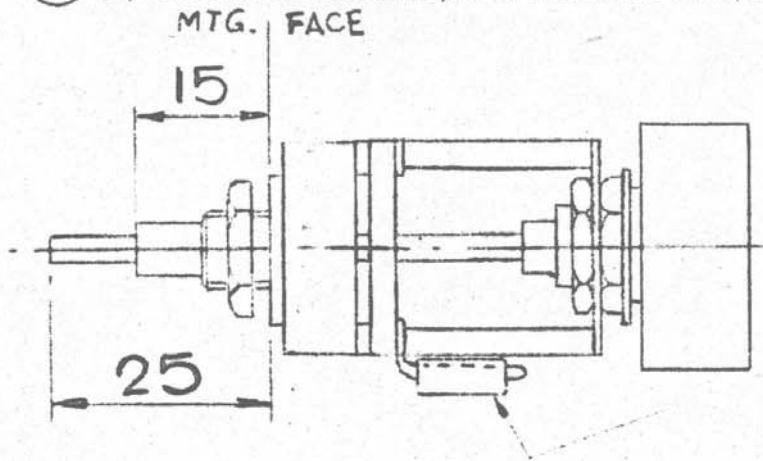


NB! SWITCH STOPPED DOWN TO 22 WAY

2	1	ISSUE	FIRST USED ON	MATL.	TOL. UNLESS OTHERWISE STATED		
19-3-74	19-10-73	DATE	DRN. A.H.L.	FINISH	LINEAR	ANGULAR	HOLES
10878		CHANGE NOTE NO	TRACED G.T.	TITLE	3RD ANGLE PROJ. DIMS IN SCALE		
		CHECKED	CHECKED <i>ALL</i>	FOR THE 1073 CHANNEL AMPLIFIER	DRG. NO		
		CHECKED			EK20033		

4 | 12K WAS 1K5 | 24-6-76 G.S. | 3 | 27-6-74 | 10907

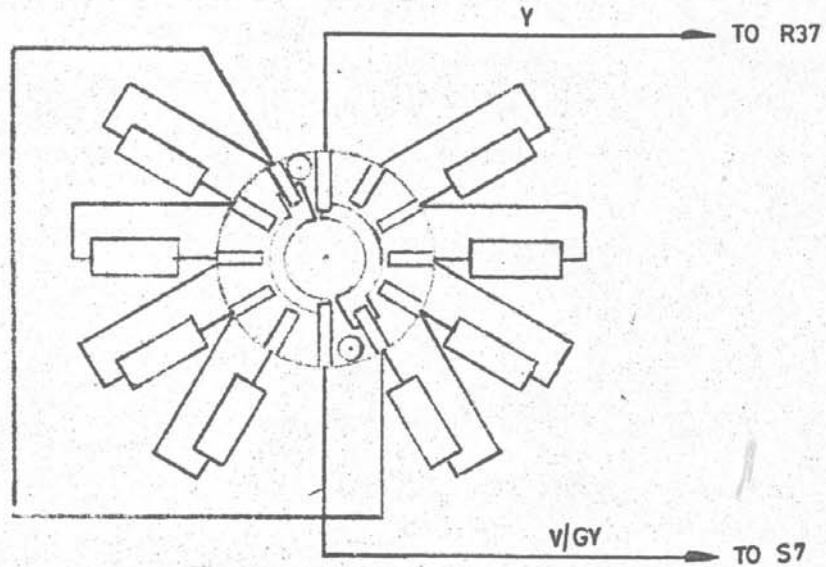
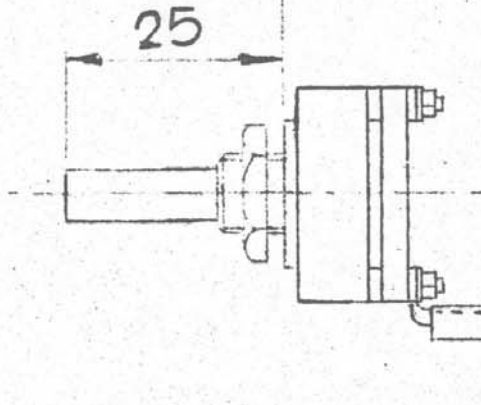
Rupert Neve & Company Ltd | 1973



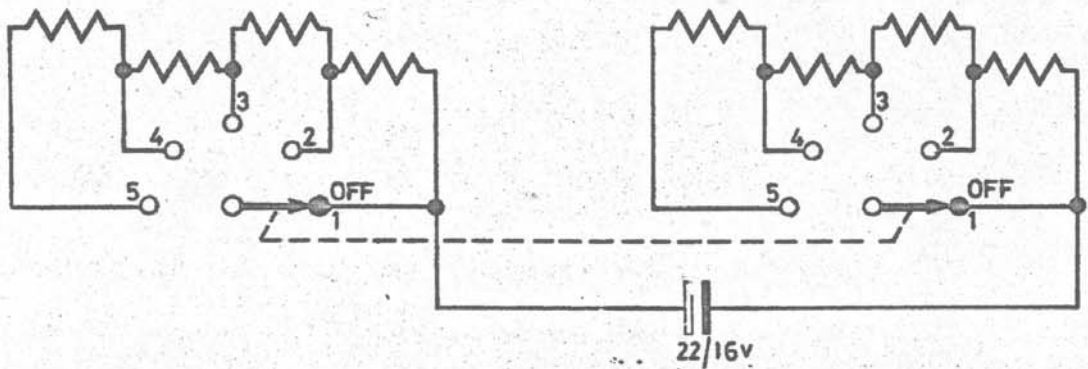
2	1	ISSUE	FIRST USED ON 1070	MATL.	TOL. UNLESS OTHERWISE STATE
0-11-73	6-11-72	DATE	DRN. D.G.J.	FINISH	LINEAR ± 0,4
0819		CHANGE NOTE NO	TRACED	TIT F	ANGULAR HOLES +0.13 -0
		CHECKED	CHECKED	LOW FREQUENCY SWITCH	3RD ANGLE PRJ. DIMS IN mm
		CHECKED			SCALE 1/1
					DRG. NO EK 20065
					1972



MTG. FACE



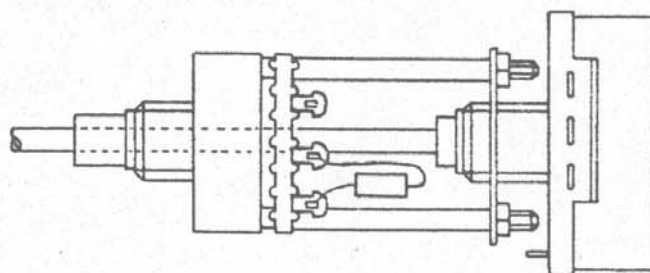
ALL RESISTOR VALUES 4M7



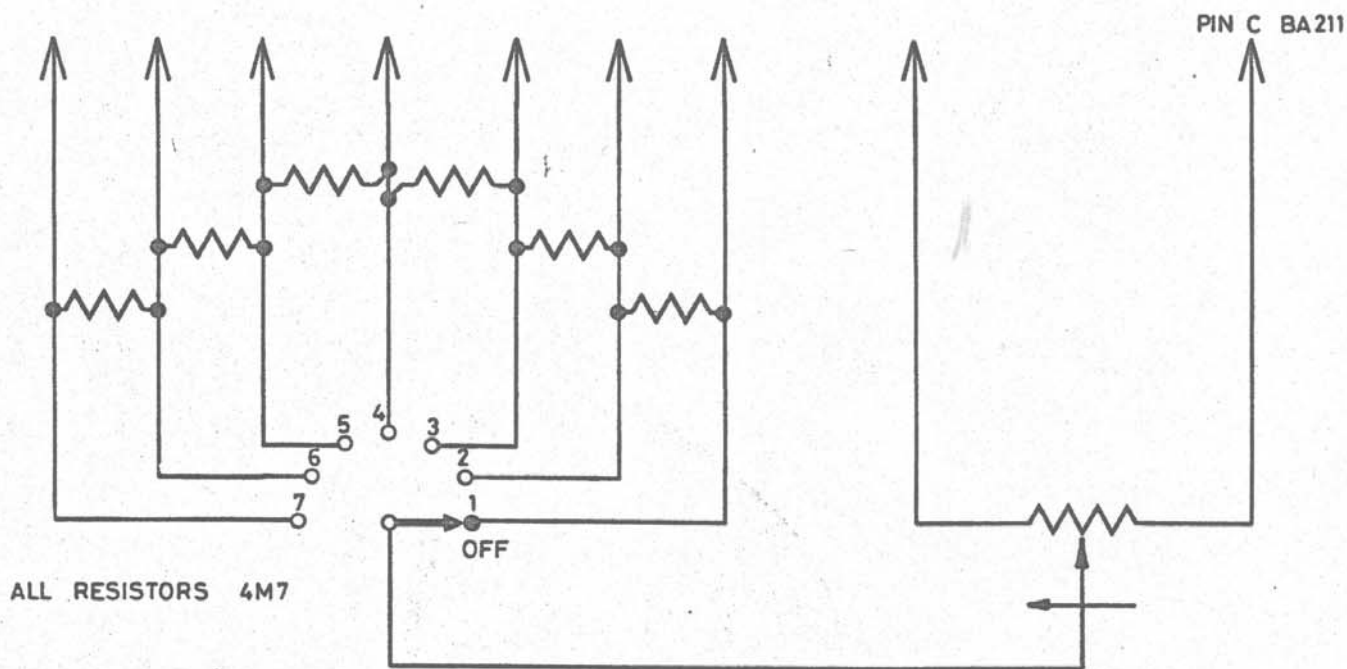
2	1	ISSUE	FIRST USED ON	MATL.	TOL. UNLESS OTHERWISE STATE		
			1070		LINEAR	ANGULAR	HOLES
30.11.73	6.11.72	DATE	DRN. D.G.J.	FINISH	$\pm 0,4$		$+0,13$ -0
10818		CHANGE NOTE NO	TRACED	TITLE	3RD ANGLE PRJ.	DIMS IN	SCALE
			CHECKED			mm	1/1
AHL	GT	CHECKED		H.P. FILTER SWITCH	DRG. NO	EK 20066	
Download from www.Somanuals.com . All Manuals Search And Download.				Rupert Neve & Company Ltd.	1972	(C) A4	



Rupert Neve & Company Ltd. own the copyright of this drawing which is not to be copied reproduced or disclosed, in part or whole, to a third party without written permission



RESISTORS MOUNTED VERTICALLY AROUND SWITCH



ALL RESISTORS 4M7

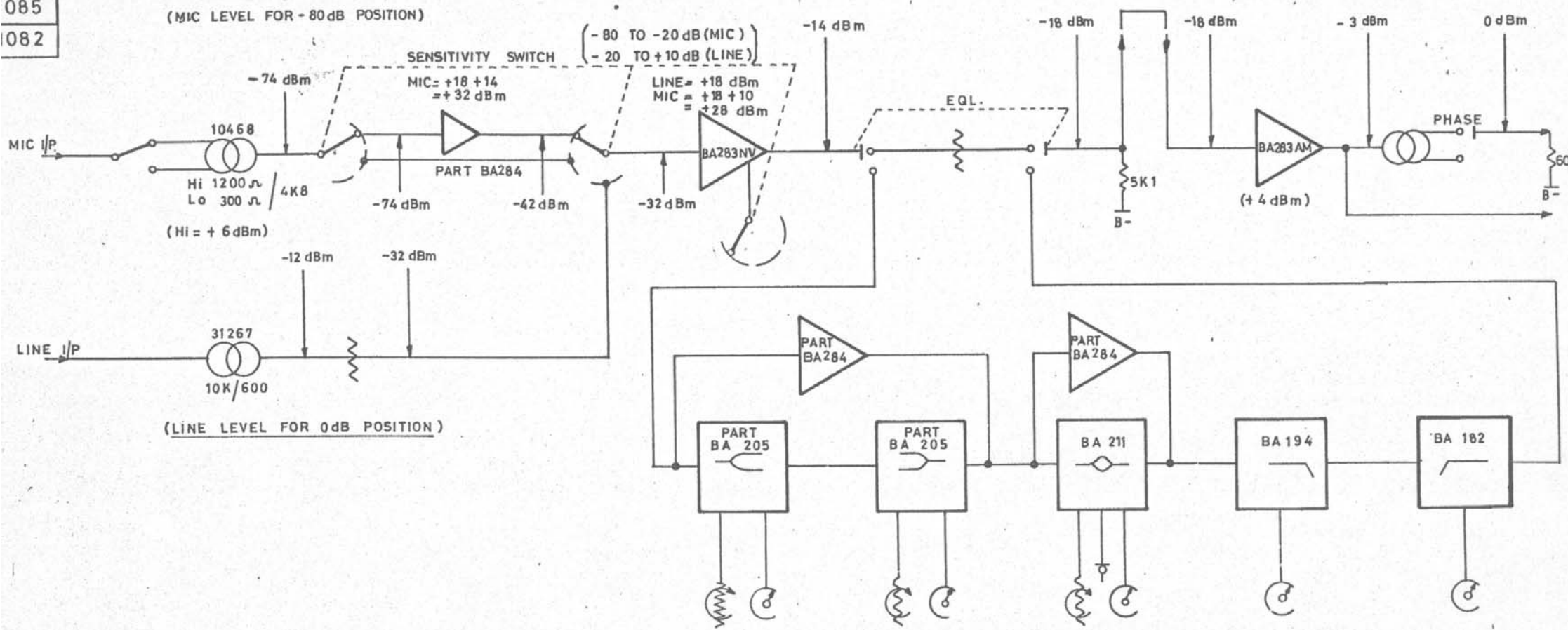
PRESENCE SWITCH ASSEMBLY

(FOR USE WITH BA211)

ISSUE	FIRST USED ON	MATL.	TOL. UNLESS OTHERWISE STATED		
	1082		LINEAR	ANGULAR	HOLES
DATE	DRN	FINISH	+		+0.13
	A.H.L		3RD ANGLE PRJ		
CHANGE NOTE NO	TRACED	TITLE		DIMS IN	SCALE
	R.J.C		PRESENCE SWITCH		
CHECKED	CHECKED	DRG NO	EK 20,105		
	A46.		1973	© A4	

084
085
082

EB 20039



FOR FREQUENCIES SEE MODULE FRONT PANEL LAYOUTS

- 1084 HAS SMOOTH CONTROLS REPLACES 1073
HAS SWITCHED HF
- 1085 HAS STEPPED CONTROLS REPLACES 1076
HAS SWITCHED HF
- 1082 SIMILAR TO 1084
HAS 30HZ INSTEAD OF 45HZ ON HPF
HAS ALL PGT. DESIGNATIONS INVERTED

FOR 1084 SEE DRAWING ML 60598

FOR 1085 SEE DRAWING ML 60555

FOR 1082 SEE DRAWING ML 60555

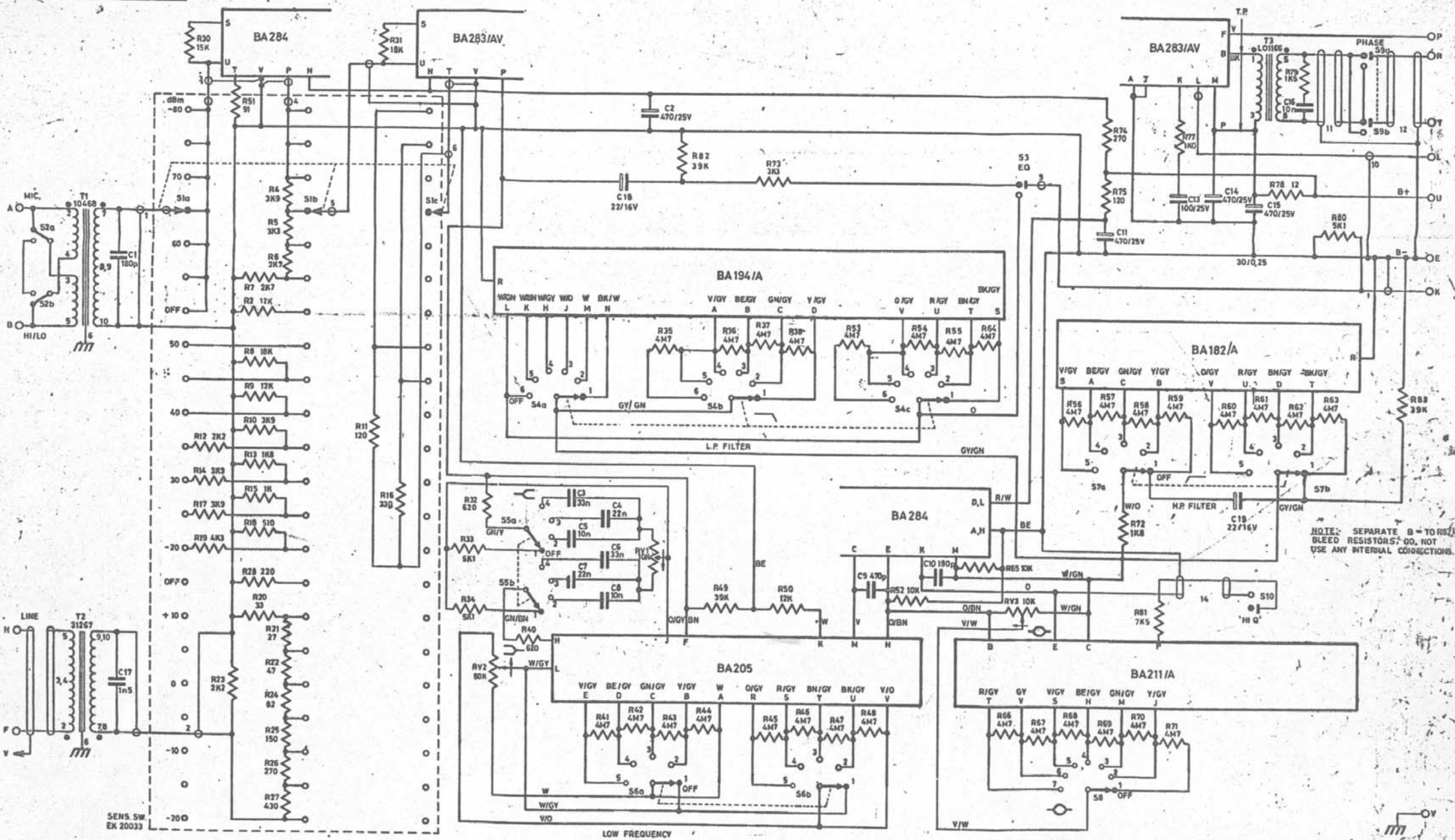
The Neve Group of Companies

TITLE CHANNEL AMPLIFIERS 1084, 1085, 1082

This drawing is the property of this company and may not be reproduced or disclosed to a third party without the permission of this company.

DATE 17 OCT 72

DRAWING NUMBER EB 20039

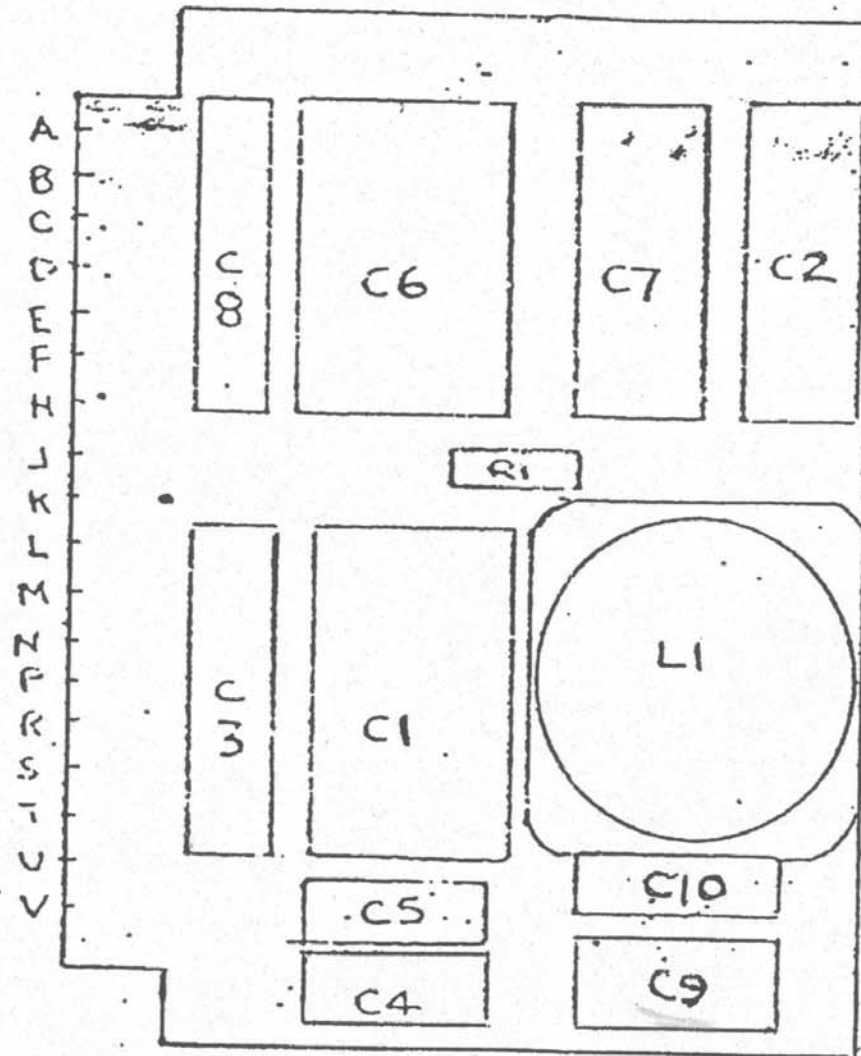


SW No.	1	2	3	4	5	6	7	DR. No.
54	GRHz	8	10	14	18	OFF		EK 20107
56	OFF	35	60	110	220			EK 20065
57	OFF	45	70	160	360			EK 20107
58	OFF	0.35	0.7	1.6	3.2	4-8	7.2	EK 20105
55	OFF	16	12	10				EK 20106

SW No.	1	2	3	4	DR. No.
54	20-5-74	6-8-73	2-3-73	29-1-73	ISSUE
56	10907	10741	10665	10671	DATE
57					CHANGE NOTE NO.
58					CHECKED

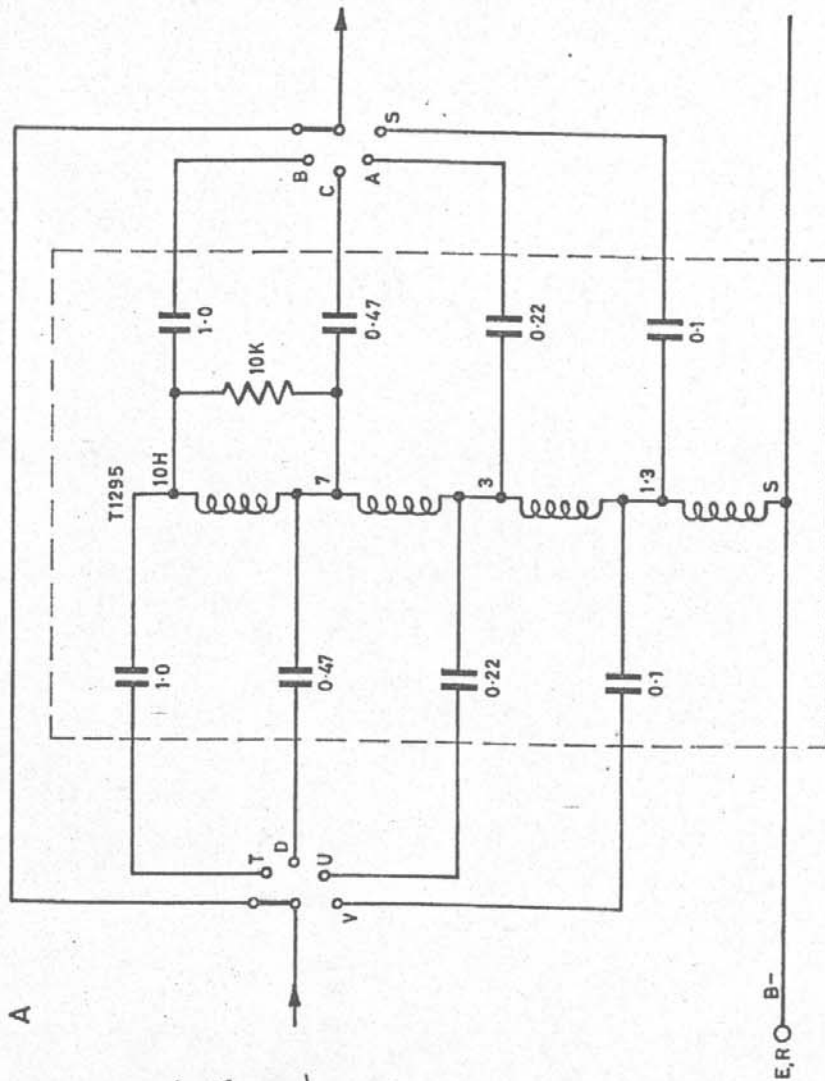
NOTES: 1. ELECTROLUBE PCB CONNECTORS BEFORE INSERTING BOARD.
2. SIMILAR TO 1082 CHAMP(BA182/A BECOMES BA182/E)

FIRST USED ON	MAT'L	TOL. UNLESS OTHERWISE STATED
DRN/AHL D&D	FINISH	LINEAR ANGULAR HOLES
TRACED LMC	TITLE	3RD ANGLE PROJ. DIMS IN SCALE
CHECKED	1084 CHANNEL AMPLIFIER	DRG. NO. EH/10,036
	Rupert Neve & Company Ltd.	1973

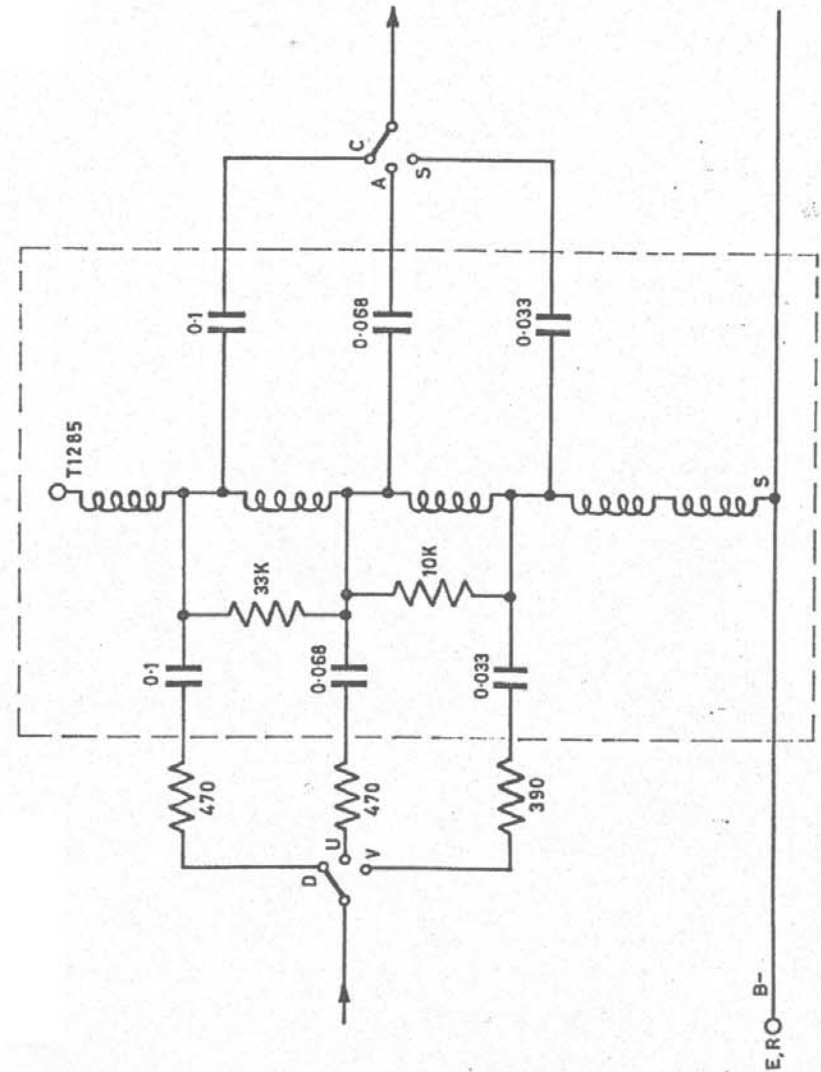



TLN	038000/25	07.04.03	1
NAME	MOD. No.	DATE	ISS

LOUR	QUANTITY	STOCK CODE	DESCRIPTION	COMMENT	THIRD ANGLE PROJECTION	TITLE:			AMS NEVE	
					 DRAWN TO B.S.308	HIGH PASS FILTER PCB.			DRG No.	SHT
						DRAWN	APP'D	DATE	AMS NEVE PLC. BILLINGTON ROAD, BURNLEY, LANCs. BB11 5UB. ENGLAND. TEL. (01282) 457011 FAX. (01282) 417282	PL10182A



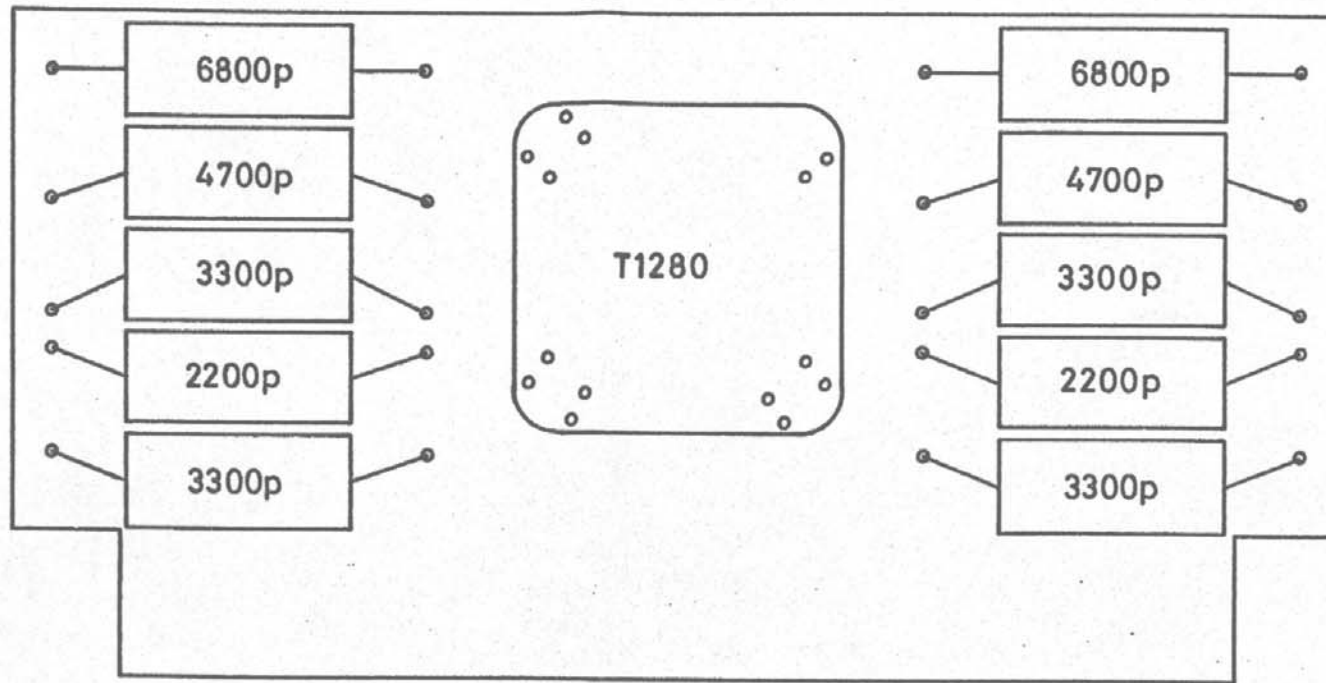
1084 version




The Neve Group of Companies,
 TITLE **B182 A&B**

This drawing is the property of this company and may not be reproduced or disclosed to a third party without the permission of this company.

		DATE
		DRAWING
		NUMBER
		D/10.019 A & B



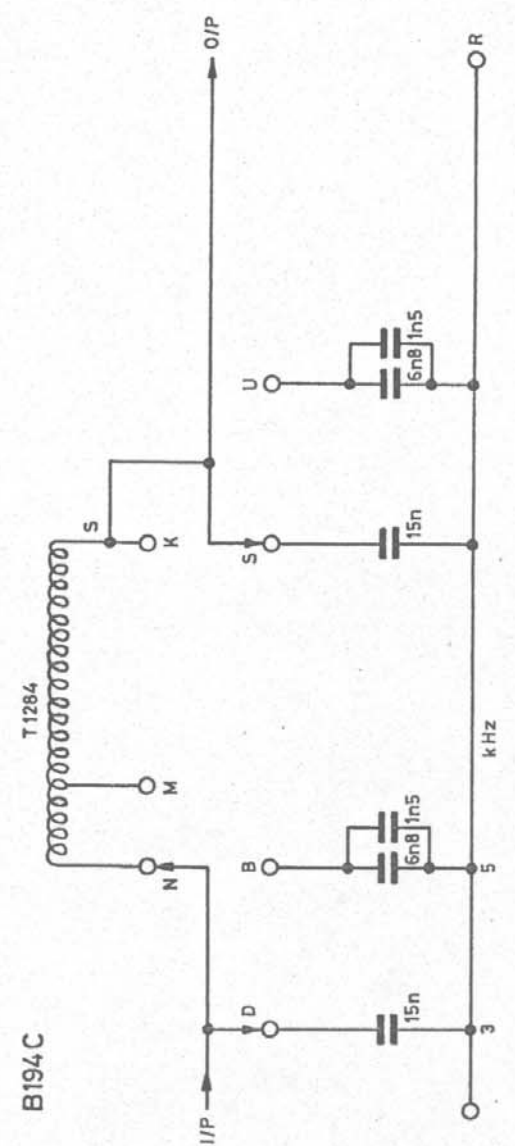
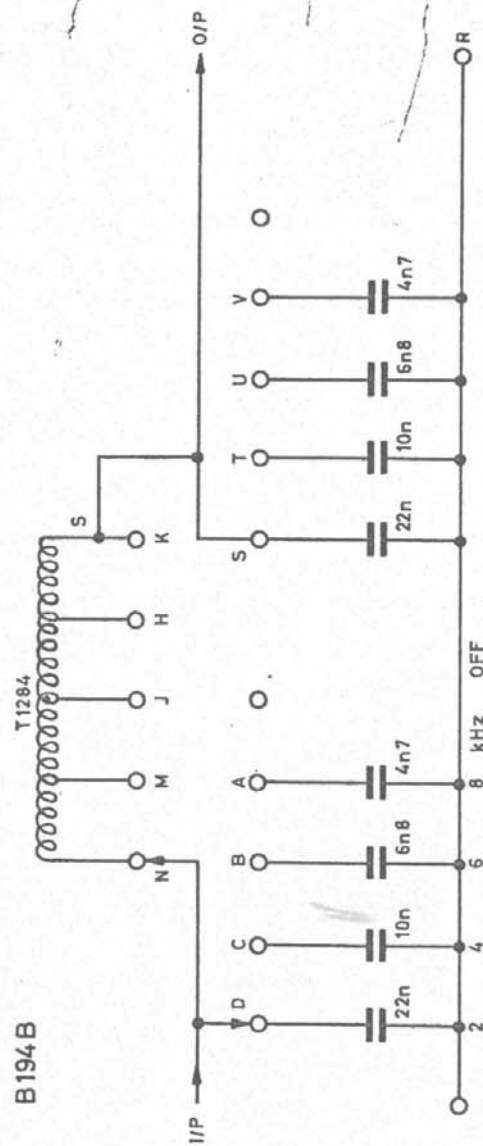
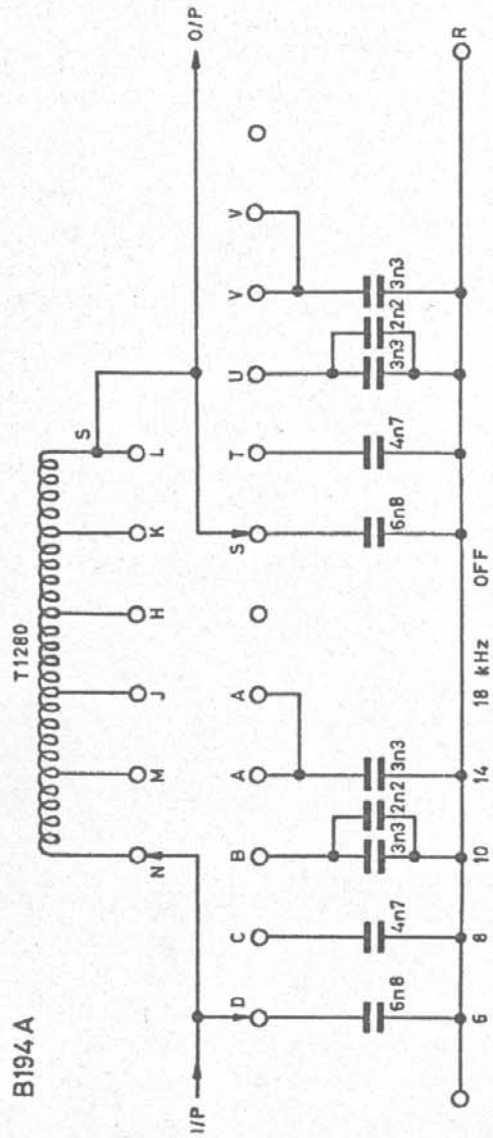
The Neve Group of Companies

TITLE B194/A - COMPONENT LAYOUT

This drawing is the property of this company and may not be reproduced or disclosed to a third party without the permission of this company.

DATE

DRAWING NUMBER



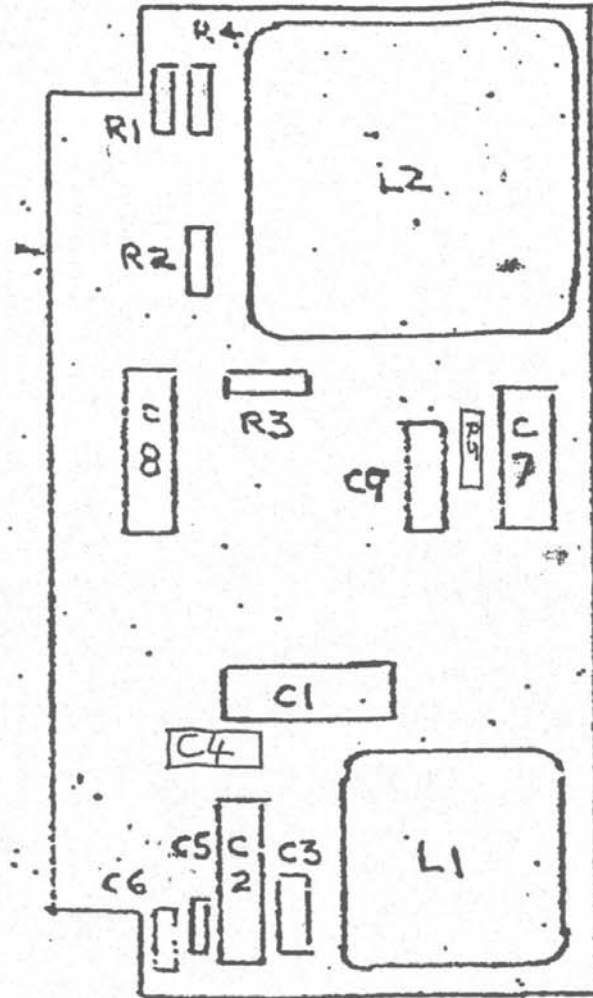
The Neve Group of Companies

This drawing is the property of this company and may not be reproduced or disclosed to a third party without the permission of this company.

B 24/2/71
A 20/1/71 10 202

DATE 24/2/71

DRAWING NUMBER D/10,031 / ABC

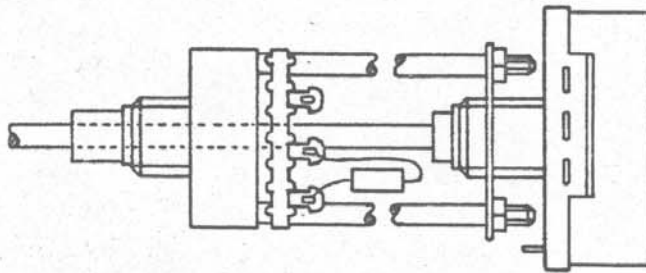


TLN	038000/LS	07.04.03	1
NAME	MOD. No.	DATE	IS

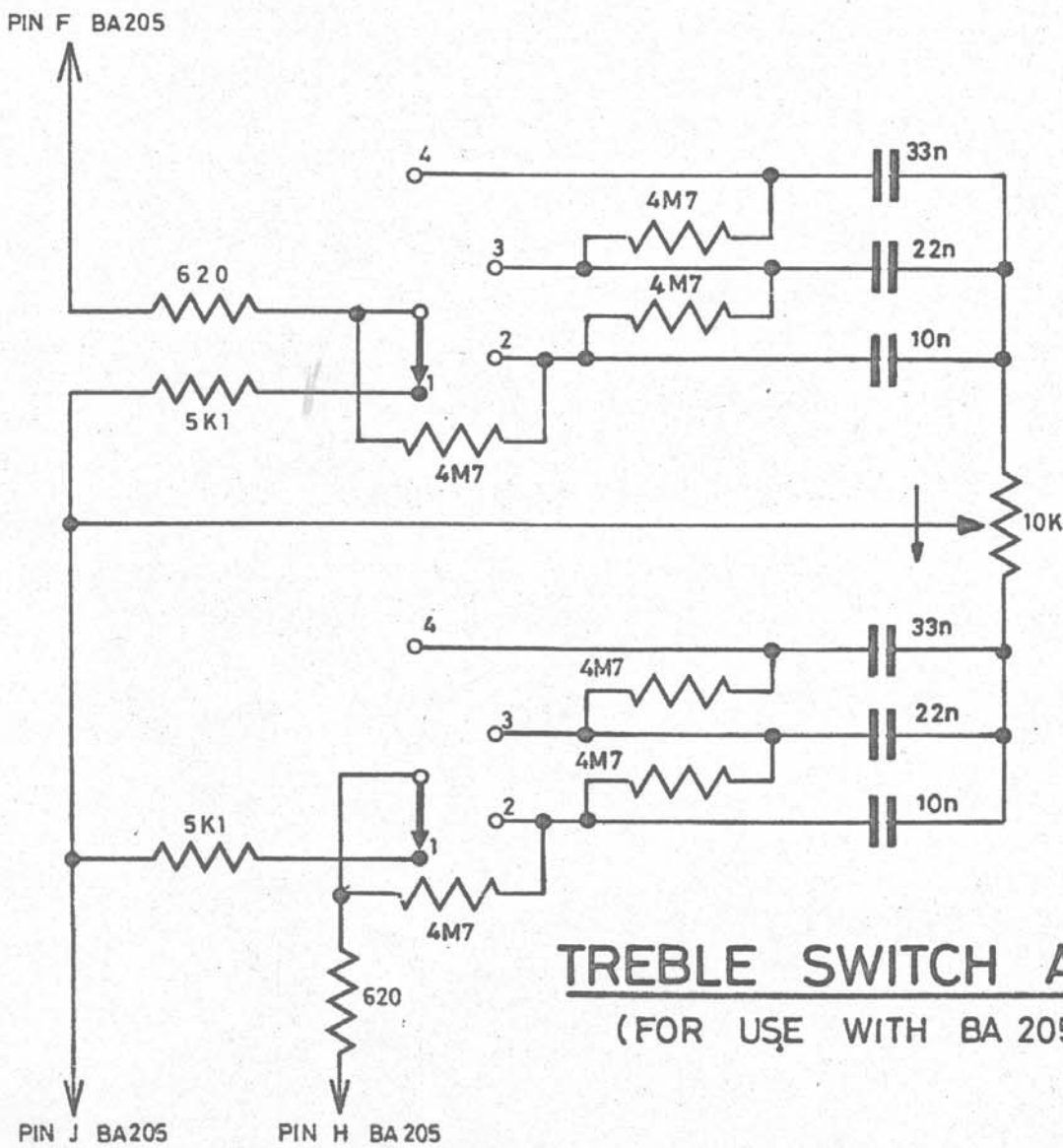
QUANTITY	STOCK CODE	DESCRIPTION	COMMENT	THIRD ANGLE PROJECTION	TITLE:	DRWN	APP'D	DATE	AMS NEVE PLC. BILLINGTON ROAD, BURNLEY, LANC. S. BB11 1UB, ENGLAND. TEL. (01282) 457011 FAX. (01282) 417282	DRG No.	SHT
				<p>AMS NEVE PLC. owns the copyright to this drawing. It must not be copied in whole or in part, used for manufacture or otherwise disclosed without prior written consent of the company. © AMS NEVE PLC.</p>	PRESENCE FREQUENCY PCB					PL10211A	



Rupert Neve & Company Ltd. own the copyright of this drawing which is not to be copied reproduced or disclosed, in part or whole, to a third party without written permission.



CAPACITORS & RESISTORS MOUNTED VERTICALLY AROUND SWITCH



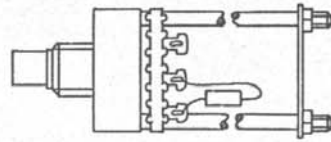
TREBLE SWITCH ASSY.

(FOR USE WITH BA 205)

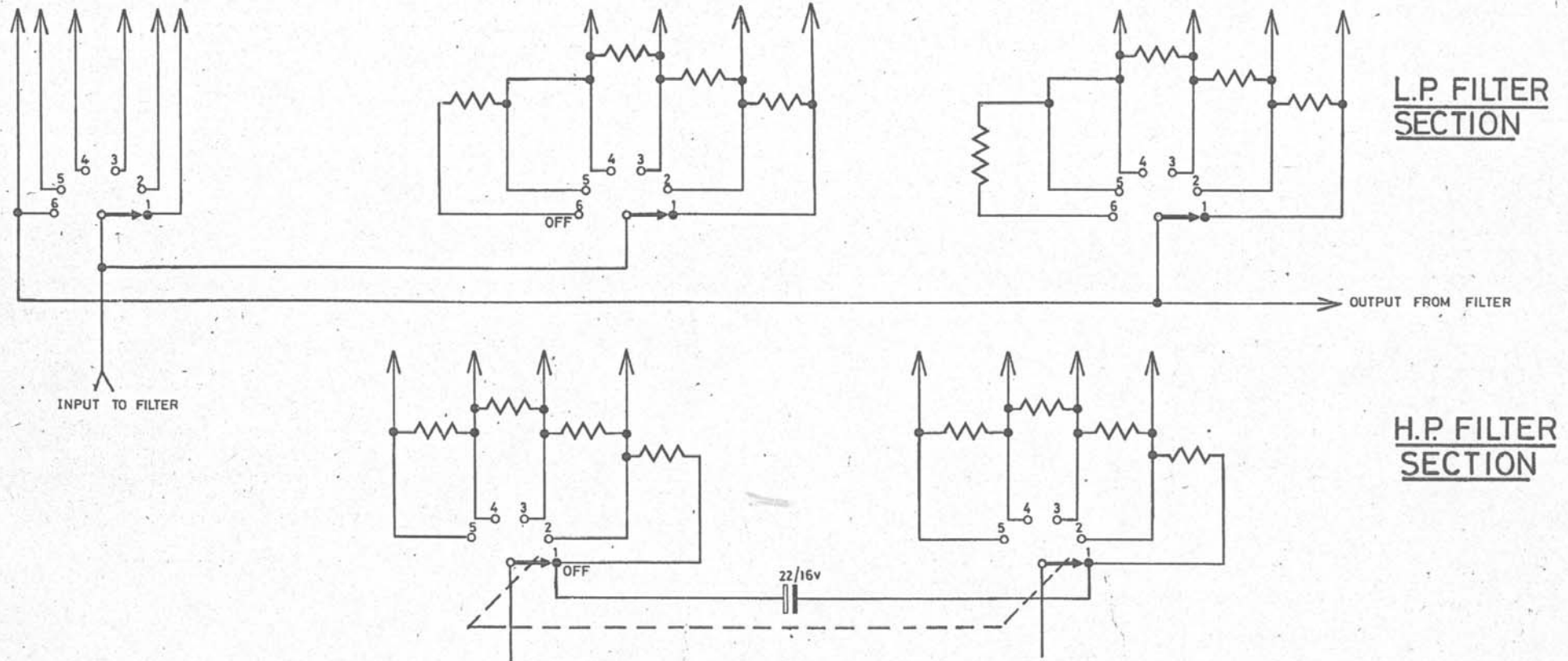
2	1	ISSUE	FIRST USED ON	MATL.	TOL. UNLESS OTHERWISE STATED			
			1082		LINEAR	ANGULAR	HOLES	
22-1178	8-1-73	DATE	DRN. A.H.L.	FINISH	±		+0.13 -0	
40051		CHANGE NOTE NO	TRACED R.J.C.	TITLE	3RD ANGLE PRJ.	DIMS IN	SCALE	
		CHECKED	A.H.L.		TREBLE SWITCH	DRG. NO	EK20106	
		CHECKED	Download from www.Son Manuals.com . All Manuals Search And Download.			1973	© A4	

ING No
EK 20 107

Rupert Neve & Company Ltd. own the copyright of this drawing which is not to be copied, reproduced or disclosed, in part or whole, to a third party without written permission.



RESISTORS MOUNTED VERTICALLY AROUND SWITCH



ALL RESISTORS 4M7

3	2	1	ISSUE	FIRST USED ON 10 8 2	MAT'L.	TOL. UNLESS OTHERWISE STATED		
30-11-73	5-3-73	8/1/73	DATE	DRN. A.H.L.	FINISH	LINEAR +	ANGULAR +	HOLES +0.13 -0
10 8 0 6	10665		CHANGE NOTE No	TRACED R.J.C.	TITLE	3RD ANGLE PRJ.	DIMS IN	SCALE
			CHECKED AHL		H.P. & L.P. FILTERS	DRG. No		EK 20 107
			CHECKED			1973		© A3

Free Manuals Download Website

<http://myh66.com>

<http://usermanuals.us>

<http://www.somanuals.com>

<http://www.4manuals.cc>

<http://www.manual-lib.com>

<http://www.404manual.com>

<http://www.luxmanual.com>

<http://aubethermostatmanual.com>

Golf course search by state

<http://golfingnear.com>

Email search by domain

<http://emailbydomain.com>

Auto manuals search

<http://auto.somanuals.com>

TV manuals search

<http://tv.somanuals.com>