

MAX MDL200 Multi Disc Loader System

The MDL200 Multi Disc Loader (FIG. 1) allows you to transfer up to 200 discs (DVD or CD), and load the content on a MAX server. The MAX MDL200 Multi Disc Loader System comes as a kit that includes a PowerFile Multi-Disc Loader, a Windows® PC pre-loaded with all required software, pre-configured for plug and play operation. The PowerFile has three IEEE1394 (FireWire) ports for communication with the PC (see FIG. 1), and includes all cables necessary to get started.

To use the MDL200 System, you'll connect the PowerFile to the PC and to the target MAX server as described in this document. The MAX MDL200 software application (pre-loaded on the PC) allows you to specify an IP address for the target MAX server, and manage the process of loading discs into the PowerFile and loading the media to a target MAX server.

Note: This document is only intended to provide a short cut to installing and using the PowerFile and the MAX MDL200 software application. For detailed instructions, refer to the MDL200 Multi-Disc Loader System Operation/Reference Guide (available online at www.amx.com).

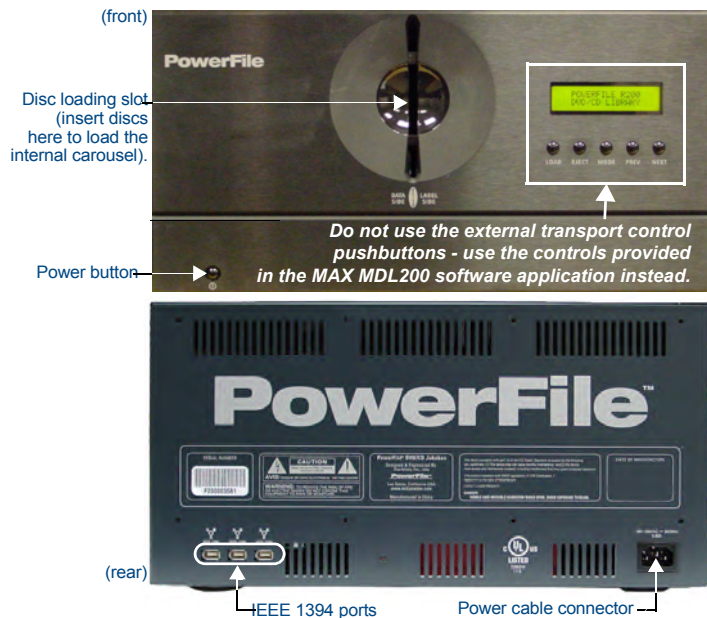


FIG. 1 PowerFile Multi Disc Loader (front and rear panel components)

PowerFile (FG 2179-01) Specifications	
Storage Capacity:	200 discs, 4.7 GB/disc
Power Requirements:	<ul style="list-style-type: none"> Voltage: 110 – 240V AC (autosensing) Frequency: 50/60 Hertz Consumption: 45 watts (peak), 35 watts (normal)
AC Current Draw (AMP):	<ul style="list-style-type: none"> .45A - Bootup/Power Cycle Peak .45A - Normal Usage Peak
Interface Specifications (IEEE 1394):	<ul style="list-style-type: none"> Bus interface IEEE-1394 compliant Data transfer rate 100, 200, and 400Mbps Three 6-pin IEEE-1394 ports
DVD-ROM drives:	Two DVD-ROM drives
Drive Specifications:	<ul style="list-style-type: none"> Supports most popular CD & DVD formats (<i>DVD-RAM, DVD-RW and DVD+ are not supported</i>). Random seek: 90 ms (DVD-ROM); 80 ms (CD-ROM) Random access: 110 ms (DVD-ROM); 85 ms (CD-ROM) Data Transfer Rate: <ul style="list-style-type: none"> - Sustained DVD 8,112KBps (6x) - CD (Mode 1) 4,800KBps (32x) - CD (Mode 2) 5,475KBps (32x)
Front Panel Components:	<ul style="list-style-type: none"> Power switch Disc-loading slot Transport Control buttons and Display (not used - use MAX MDL200 to control the PowerFile. Refer to the MAX-MDL200 Multi-Disc Loader System Operation/Reference Guide for details).
Rear Panel Connectors:	<ul style="list-style-type: none"> Three IEEE 1394 ports Power Cable connector: IEC connector for AC power cable.
Reliability:	<ul style="list-style-type: none"> Mechanism MTBF: 1,000,000 swaps Power On Hours: 100,000
Operating Environment:	<ul style="list-style-type: none"> Operating Temperature: 5° to 40° C; 41° to 104° F Storage Temperature: -10° to 60° C; 14° to 140° F Operating Humidity: 10% - 90% relative humidity Storage Humidity: 5% - 95% relative humidity, non-condensing

PowerFile Specifications (Cont.)	
Average Disc to Disc Access Time:	4 seconds
Dimensions (HWD):	8 3/4" x 17" x 20" (22.22cm x 43.18cm x 50.80cm)
Weight:	30 lbs (13.60 kg)
Included Accessories:	<ul style="list-style-type: none"> Windows® PC (P4 with IEEE 1394 capabilities, configured with MAX MDL200 software for managing the PowerFile. LCD Monitor (for the PC) 6' (1.83m) IEEE 1394 cable 6' (1.83m) Ethernet Crossover cable 6' (1.83m) AC Power cable 6' (1.83m) HDMI-toDVI Conversion cable

IMPORTANT NOTE CONCERNING THE INCLUDED PC:

The PC that is included with the MDL200 system is pre-configured for use with the PowerFile, and is loaded with the MAX MDL200 software application. The software loaded on this machine requires a certain environment to operate properly in enabling up to 200 CD/DVD loading. Any changes to the PC may cause it to stop performing its intended task of loading CD/DVD. AMX cannot be responsible for this operation if you change the operational software environment.

Refer to the included insert titled "MAX MDL200 Multi-Disc Loader System - Desktop PC" for important details.

Step 1: Connect the PowerFile to the MAX Server and PC

The PowerFile first needs to be connected to the PC and the MAX server that you will be loading the media to, as described below.

1. Connect one of the IEEE 1394 ports on the rear of the PowerFile to the IEEE 1394 port on the PC, using the included IEEE 1394 cable.
2. Use the included Ethernet crossover cable to connect the PC directly to the MAX server's **ETHERNET CONTROL** port (FIG. 2).

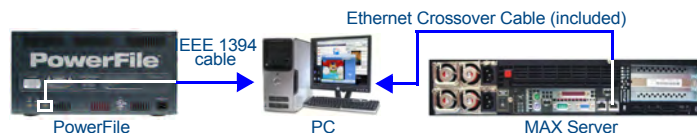


FIG. 2 Example configuration - direct connection

3. Connect the MAX server's power cable(s).
4. Power up the PowerFile, PC and MAX server, allowing up to one minute for the server to boot up.

Note: Alternatively, you can also connect the PC to the MAX server via a LAN connection (refer to the MDL200 Multi-Disc Loader System Operation/Reference Guide for details). Using the PowerFile on a LAN connection may result in slow loading, due to network configuration and the amount of network traffic.

Step 2: Verifying Communication Between the PC, PowerFile and MAX Server

Once the PowerFile, PC and MAX server are connected and powered up:

1. Launch the **MAX MDL200** application on the PC (double-click the **MAX MDL200** desktop icon to launch the program and access the main window).

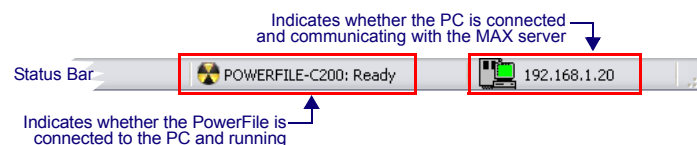


FIG. 3 MAX MDL200 Status Bar

2. The PC and the MAX MDL200 application are pre-configured to allow communication between the PC, the PowerFile and the MAX server. The status bar (at the bottom of the dialog) should indicate that you have successfully connected to the PowerFile and the MAX server (see FIG. 3):
The center area of the status bar should indicate that the PowerFile (C200) is connected and running, and the icon on the right side of the status bar should be green to indicate communication with the server.
If you are not communicating with either the PowerFile or the MAX server, first verify that your cables are connected properly. Then select **File > Settings** to open the Settings dialog.
Verify that the *Max MMS/IMS IP* address indicated here matches that of the target MAX server.
3. Click **OK** to save your changes and close the Settings dialog.

Once the status bar indicates that you are connected to both the PowerFile and the MAX server, then you are ready to load discs (DVDs and CDs) into the PowerFile.

Step 3: Loading Discs Into the PowerFile

Discs are physically loaded into the PowerFile through the vertical slot on the front panel of the unit, using the **Changer > Load Range** and **Load All** options in MAX MDL200.

1. First verify that the PowerFile is powered up (the power switch is located on the lower-left of the front panel), and communicating with the PC and the target MAX Server (refer to "Step 2: Verifying Communication Between the PC, PowerFile and MAX Server" for details).
2. Select **Changer > Load Range** or **Load All** from the MAX MDL200 menu bar. The **Changer > Load Range** and **Load All** options operate the same, except that Load Range allows you to specify a range of slots to load (in the *Start Disc/End Disc* fields).
3. This prompts the PowerFile to present each open slot on the disc carousel so that you can load a disc into each one. If there are already some discs loaded in the carousel, the PowerFile will automatically skip any slot positions that are already occupied and present the next open slot for loading. You will hear the PowerFile's internal carousel spin to the next available empty slot and stop. At this point you have approximately 10 seconds to insert a disc.

Note that at this point the discs that have been loaded are indicated on the MAX MDL200 main screen, but without any title or media information since they have not yet been identified by the program.

Step 4: Loading Media to the Target MAX Server

Once all of the disks have been loaded into the PowerFile, you are ready to load DVD and CD media to the MAX server.

Step One: Verify the Transfer Setting

Before you start, select **File > Settings** to open the Settings dialog and set the *Record discs with multiple matches* option to the desired setting:

- **If set to Yes:** Discs that were not positively identified will be transferred. As a result, these discs will not have any disc information associated with them.
- **If set to No:** This option causes the PowerFile to skip transferring any discs that have multiple title matches, or that are not positively identified. These discs can later be identified manually, by transferring the same range of discs again. Since MAX MDL200 will not attempt to transfer any disc that has already been marked as transferred, it will only transfer the discs that were manually identified. This is the default (and recommended) setting.

Step Two: Transfer Discs

Once the discs have been loaded into the PowerFile, you can begin the process of transferring the media:

1. Set the First Disc/Last Disc range on each drive.
 - Note:** *The first disc on Drive 2 must be greater than the last disc of Drive 1 (valid disc numbers are 1-200).*
2. Press the **Record** button to begin transferring (on the drive(s) that you want to use), and let the PowerFile run until the process is complete.
3. The status of each disc is indicated in the *Status* column as it is being identified and transferred. Once complete, the Status message indicates that the media was successfully loaded on the MAX server. Note that the PowerFile loads one disc at a time per drive.
4. As each disc is read it is automatically loaded to the MAX server.
5. MAX MDL200 displays a message to inform you when all discs in the specified range have been loaded to the server.
6. Once the process is complete, you should verify the contents of the MAX server via the WinMAX application (*Movies* and *Music* tabs).
 - Note:** *You can use the WinMAX application to re-identify any discs that display with incorrect or incomplete disc information if necessary. You can also use WinMAX to manually enter/edit disc information as needed. Refer to the WinMAX Instruction Manual (available online at www.amx.com) for details.*

If one or more discs cannot be identified:

While MAX MDL200 settings can allow you to proceed with transferring discs that could not be identified, it is recommended that you set MAX MDL200 to skip discs with multiple matches. Once the transfer process is complete, these discs can be identified manually by selecting the best title match for each from the multiple possible title matches found in the database.

1. Double-click on a title in MAX MDL200 to open the Multiple Matches dialog.
2. Specify a search method (*Title* - default setting or *UPC*). Enter the disc title (or UPC code) in the Search field. The results are displayed in the lower window.
 - If you selected to search by *Title*, enter part of the title of the desired CD or DVD. For best results, enter a single word and let the program return a list of all titles that contain that word. Use a multi-word search to refine the results if necessary.
 - If you selected to search by *UPC*, enter the UPC code as it appears on the disc packaging.
 - For either search method, avoid using asterisks or other wild-card characters to achieve the best results.
3. Click the **Search** button.
4. Select the best match and click **OK** to assign the selected title (and associated media information) to the disc.

Verifying Disc Information

In some cases in which the program has indicated more than one possible match for a disc, it may not be obvious which of the possible matches represents the best match for the disc. In these cases you should eject the disc momentarily so that you can visually check the physical label on the disc. The Eject and Load buttons on the Multiple Matches dialog allow you do this quickly:

1. Double-click on the disc/slot in question (in the Disc/Slot Window) to access the Multiple Matches dialog. Review the list of possible title matches in this dialog.

2. Click on the **Eject** button in the Multiple Matches dialog. This option ejects the disc from the PowerFile. Remember that you have approximately 10 seconds to remove the disc from the slot. Note that by using the Eject and Load buttons in the Multiple Matches dialog, the program retains any disc information that exists for this disc. This is also true for the Load and Eject buttons in the New Title Entry dialog. By contrast, if you eject a disc from the PowerFile via the Eject options in the Changer menu, or the Disc Context Menu, all disc information is lost. These options are intended to be used at the point that the disc is being permanently removed from the PowerFile, once the loading process is complete.
3. Look at the disc label to discern which of the possible title matches best matches this disc.
4. Press the **Load** button in the Multiple Matches dialog, and replace the disc in the Disc Loading Slot.
5. Select the best possible match in the Multiple Matches dialog and click **OK**.
 - Note:** *Do not close the Multiple Matches (or New Title Entry dialog) until the disc has been reloaded. If the dialog is closed while the disc is still ejected, the slot will be set to <empty>, and all disc information will be lost.*

Manually Entering Disc Information

If no suitable title matches are found, then you may enter the information manually via the New Title Entry dialog:

1. Click **New Entry** in the Multiple Matches dialog to open the New Title Entry dialog. This dialog contains a text field where you can manually enter a title for this disc. For DVDs, you can also associate a *Genre*, *Aspect Ratio* and *Sound* option to the disc. If necessary, you can use the **Eject** and **Load** buttons in the New Title Entry dialog to eject the disc so that you can review any information that is printed on the disc label:
 - a. Press **Eject** to eject the disc (at which point you have approximately 10 seconds to physically remove the disc from the disc loading slot on the PowerFile).
 - b. When you're finished, press the **Load** button and replace the disc (label-side facing to the right) in the carousel (you have 10 seconds after pressing the Load button to insert the disc).
2. Click inside the *Title* text field, and type the title that you want to associate with this disc.
3. For DVDs, use the drop-down menus to select a *Genre*, *Aspect Ratio* and *Sound* option, and click **OK** to accept the new disc information.

Removing Discs From The PowerFile

When you're finished transferring all of the discs in the PowerFile, remove them from the unit:

- To unload a single disc, right-click on the disc title and select **Eject** from the context menu.
- To unload a selected range of discs, select **Changer > Eject Range** and specify the range of discs you want to eject (in the *Start Disc/End Disc* fields).
- Alternatively you can use the **Changer > Eject All** command to eject all of the discs.

In any case, as each disc is ejected, it must be manually removed from the carousel on the front of the PowerFile. You have 10 seconds to remove the disc before it is pulled back into the unit and the eject command is cancelled.

Clearing Disc Information From the Disc/Slot Window

By default, all disc information is displayed in the Disc/Slot Window until it is manually cleared. Select **File > Reset All** to reset (clear) all of the disc information in the Disc/Slot Window.

The **Reset All** command also stops the transfer and/or identification processes.

Troubleshooting Ethernet Communications Problems

- The Link (L) LED next to the Ethernet port on the MAX server should be on. If not, check your cables and connectors.
- Verify that the IP address and Subnet Mask settings are appropriate for your network configuration.
- If you are connecting to the server via a direct connection with a PC (using a crossover Ethernet cable), be sure that the IP Address of the Network card in your PC is in the same range as the server, but not the same address as the server. For example, a network card setting of **192.168.1.31** will work with the default server IP address of **192.168.1.30**.

DVD Region Code Settings on the PowerFile

The PowerFile has two internal DVD-ROMs, each of which may require that you specify a DVD region code setting different than the default setting of Region 1. Note that you can set the region code on each drive, and you may choose to specify different region codes for each one. Refer to the *MAX-MDL200 Multi-Disc Loader System Operation/Reference Guide* for instructions on changing the DVD Region Code Settings.

Notice: *MAX Products are not designed or intended to, and may not be used to, violate anyone's copyright or other intellectual property rights. Each user of the MAX Products may only use the Products in connection with materials legally owned or licensed by such user and only to the extent such ownership or license rights permit such use.*



Free Manuals Download Website

<http://myh66.com>

<http://usermanuals.us>

<http://www.somanuals.com>

<http://www.4manuals.cc>

<http://www.manual-lib.com>

<http://www.404manual.com>

<http://www.luxmanual.com>

<http://aubethermostatmanual.com>

Golf course search by state

<http://golfingnear.com>

Email search by domain

<http://emailbydomain.com>

Auto manuals search

<http://auto.somanuals.com>

TV manuals search

<http://tv.somanuals.com>