

# Attention Installer

Amana cannot be responsible for improper installation.

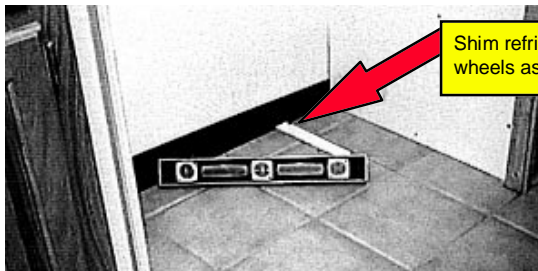
## 1 Prepare Location

- Make sure cutout floor is level. If the floor is not level it is necessary to shim the rear wheels onto a piece of plywood or other shim material so refrigerator is level.



### WARNING

To avoid electrical shock which can cause severe personal injury or death, disconnect power outlet from main power supply before installing or servicing refrigerator.



## 2 Prepare refrigerator for delivery

Some installations may require door removal to get the refrigerator into the home.

1. Remove toe grille.
2. Remove top hinge cover and top hinge.

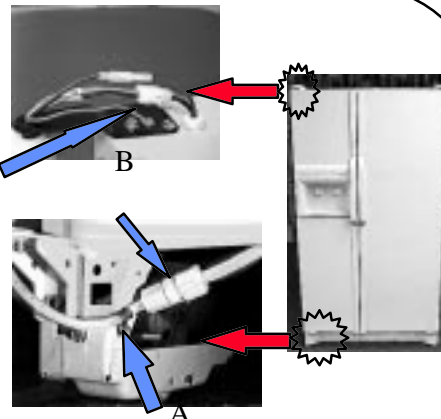
### Dispensing and Electronic Models

- Disconnect wire connectors. Loosen the water tube clamp (A). Loosen the water tube union nut (B). Pull the water tube away from the union nut and through the tube clamp.

- Unplug electrical connector from voltage box (C).

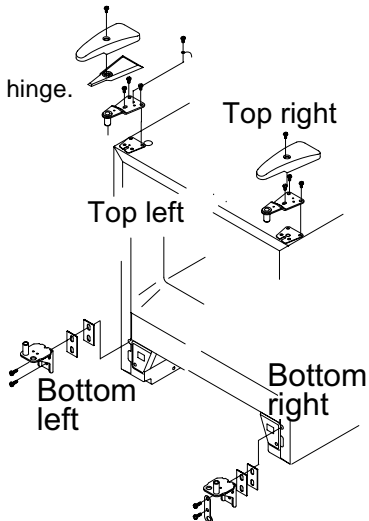
### CAUTION

To avoid electrical shock which can cause severe personal injury or death, green ground wire must remain attached to hinge.



3. Remove doors.

- Remove top hinges.
- Remove doors from bottom hinge.
- Remove bottom hinge.



4. Attach refrigerator to appliance cart.

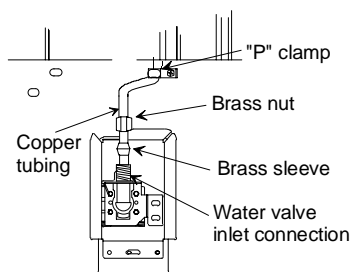


### CAUTION

To avoid floor and wall damage protect walls and soft vinyl or other flooring with masonite or other protective material when moving the refrigerator.

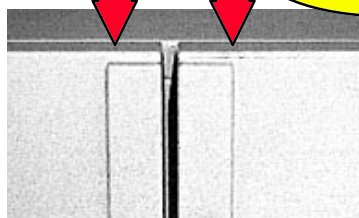
## 3 Install refrigerator

1. Reinstall doors by performing section 2 in reverse order.
2. Connect ice maker water supply line. (Refer to Owner's Manual)
3. Plug power cord into electrical receptacle.
4. Move refrigerator into final location.
5. Once refrigerator is located and stable, level refrigerator by adjusting front, and rear (some models) cabinet leveling adjustment screws.
6. Reconnect power from power source to electrical receptacle.
7. Align doors.
  - To align tops of doors loosen the 2 bottom right side hinge screws. Turn cam to raise or lower refrigerator door (Some models). (Refer to label inside refrigerator compartment on bottom mullion.)
  - Tighten the 2 hinge screws.
8. Replace toe grille.



Loosen hinge screws 2 turns counterclockwise

cabinet leveling adjustment screw



Door alignment adjustment cam (some models)

## 4 Prepare refrigerator for use.

1. Remove all interior packaging material.
2. Clean interior and exterior of refrigerator.
3. Instruct consumer on controls and features.
4. Verify power to refrigerator is connected.

## Free Manuals Download Website

<http://myh66.com>

<http://usermanuals.us>

<http://www.somanuals.com>

<http://www.4manuals.cc>

<http://www.manual-lib.com>

<http://www.404manual.com>

<http://www.luxmanual.com>

<http://aubethermostatmanual.com>

Golf course search by state

<http://golfingnear.com>

Email search by domain

<http://emailbydomain.com>

Auto manuals search

<http://auto.somanuals.com>

TV manuals search

<http://tv.somanuals.com>