



Quick Installation Guide

Model: BT-GPS/GPS-CF/GPS-CF3

Before You Start

**PLEASE CHARGE THE BATTERY FOR
AT LEAST 5 HOURS BEFORE THE INITIAL USE**

**Please install a GPS Mapping Software Before
Proceeding**

**Compatible with commercial standard NMEA 0183
GPS mapping software such as Microsoft Streets and
Trips, DeLorme Street Atlas USA, iGuidance and
more**

1. Hardware Descriptions	
1a. Hardware Descriptions – BT-GPS Rev2.0	2
1b. Hardware Descriptions – BT-GPS Rev1.5	3
1c. Hardware Descriptions – BT-GPS Rev1.0	4
1d. Hardware Descriptions – GPS-CF	5
1e. Hardware Descriptions – GPS-CF3	5
1f. Hardware Descriptions – GPS-USB	6
2. Connecting to the GPS Device	
2a. PDA Setup	7
2b. Laptop Setup	11
3. Troubleshooting GPS Signal Activities	15
4. Technical support Help	17
5. Warranty	18

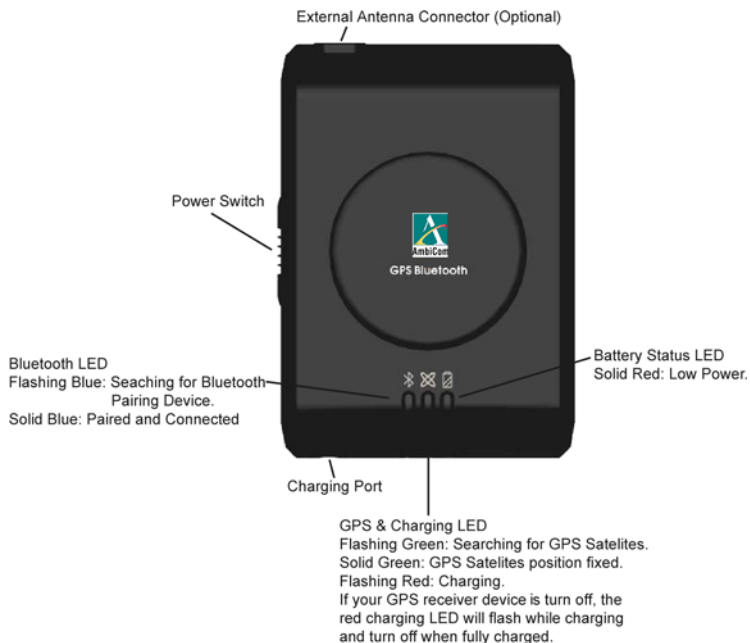
1. Hardware Description

1a. Hardware Description – BT-GPS Rev 2.0



**PLEASE CHARGE THE BATTERY FOR
AT LEAST 5 HOURS BEFORE THE
INITIAL USE**

1b. Hardware Description – BT-GPS Rev 1.5



PLEASE CHARGE THE BATTERY FOR AT LEAST 5 HOURS BEFORE THE INITIAL USE

1c. Hardware Description – BT-GPS Rev 1.0

Bluetooth LED

Solid Blue: Paired and Connected.
Solid Red: Low Power.

GPS & Charging LED

Flashing Green: Position Fixed.
Solid Red: Charging.

Charging Port

Power Switch

Press 3 Seconds To Turn On/Off The Receiver.



External Antenna Connector (Optional)



**PLEASE CHARGE THE BATTERY FOR
AT LEAST 5 HOURS BEFORE THE
INITIAL USE**

1d. Hardware Description – GPS-CF



1e. Hardware Description – GPS-CF3



1f. Hardware Description – GPS-USB



2. Connecting To The GPS Device

In order for Bluetooth device to communicate, a correct COM port number must be assigned.

Most current GPS mapping software will assign a Com port number automatically. If it fails to assign one, try to use the "Auto Detect Com Port" feature.

2a. PDA Setup

GPS-CF/GPS-CF3: Insert the card into the PDA's CF slot. Follow the instructions in your mapping software to setup the correct COM port.

Bluetooth GPS: Turn on your PDA's Bluetooth function and the BT-GPS device to discovery mode. Then discover and pair the BT-GPS. Please refer to your PDA's user manual for more information on how to successfully discover and pair a Bluetooth device or refer to **Page 8 or 10**.

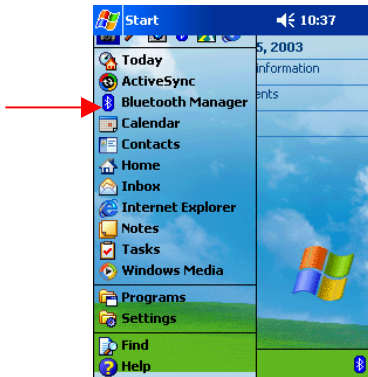
This section is divided into 2 main Scenarios, *PDA with Widcomm Bluetooth software and PDA with Microsoft Bluetooth software.*

Note: Widcomm Bluetooth software is common on most Bluetooth enabled Pocket PC running on Windows CE 4.x or earlier operating system. For Pocket PC running on Windows Mobile 5.x operating system, it has been replaced by Microsoft Bluetooth software.

Scenario A. PDA with Widcomm Bluetooth software

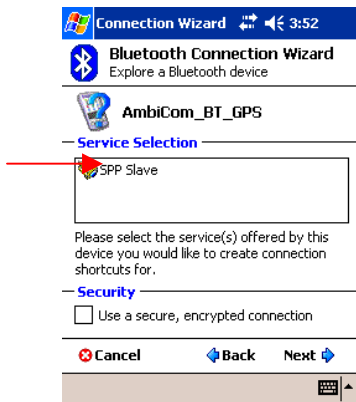
These steps apply to PDA that uses Widcomm Bluetooth software. For additional information, please refer to your system guide.

1. Tap **“Bluetooth Manager”** from the Start Menu or tap the **Bluetooth icon** at the bottom right corner.



2. Tap **“New”**. Then tap **“Connect!”**.
3. Tap **“Explore a Bluetooth device”** from the list. Then tap **“Next”**.
4. Tap **“Next”** again.
5. Tap twice on the GPS device and the PDA will begin retrieving services.

6. Tap the service name, then **“Next”**.
You will be required to supply the PIN for Pairing. The default PIN is **0000**.



7. Tap **Finish** to save the Bluetooth GPS connection.

Scenario B. PDA with Microsoft Bluetooth software

These steps apply to WM5.x PDA that uses Microsoft Bluetooth software. For additional information, please refer to your system guide.

1. Tap the **Bluetooth icon** at the bottom right corner.
2. Put a checked mark next to **"Turn on Bluetooth"**.
3. Tap the **Devices** tab and tap **"New Partnership..."**.
4. Tap on the GPS device you want to establish a connection and then tap **Next**.
5. You will be required to supply the PIN for Pairing. The default PIN is **0000**. Then Tap **Next**.
6. Put a check mark next to **"Serial Port"** and tap **Finish**.
7. If the on-screen keyboard is still open, close it and tap on the **"COM Ports"** tab.
8. Tap **"New Outgoing Port"** and make sure the GPS device is highlighted. Then tap **Next**. Assign a COM Port number and then tap **Finish**. This is the default COM Port that will be used in your GPS software to communicate with the GPS device.

2b. Laptop Setup

In order for Bluetooth device to communicate, a correct COM port number must be assigned.

Most current GPS mapping software will assign a Com port number automatically. If it fails to assign one, try to use the "Auto Detect Com Port" feature.

GPS-CF/GPS-CF3: Insert the GPS card with the PC Card Adapter into the laptop's PC Card slot. Microsoft Windows will detect a new hardware and request for the driver.

Insert the Driver CD into your laptop and **browse** to the correspondence folder in the "**Drivers**" directory.

GPS-USB: See Page 14

Bluetooth GPS: Turn on your laptop's Bluetooth function and the BT-GPS device to discovery mode. Then discover and pair the BT-GPS. Please refer to your laptop's user manual for more information on how to successfully discover and pair a Bluetooth device or refer to **Page 12 or 13**.

This section is divided into 2 main Scenarios, Laptop with Widcomm Bluetooth software and Laptop with Microsoft Bluetooth software.

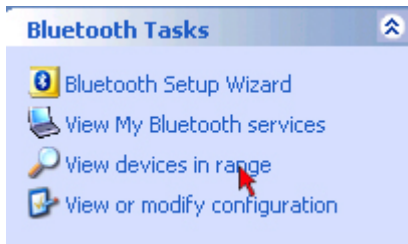
Note: Widcomm Bluetooth software is common on Bluetooth enabled Windows XP laptop. For Windows Vista / Windows XP SP2 laptop, it has been replaced by

Microsoft Bluetooth software. For other Bluetooth provider please refer to your laptop system guide.

Scenario A. Laptop with Widcomm Bluetooth software

These steps apply to laptop that uses Widcomm Bluetooth software. For additional information, please refer to your system guide.

1. Double click **“My Bluetooth Places”** icon on the desktop, and click **“View devices in range”** to discover your new Bluetooth device.



2. Double-click the GPS device you want to establish a connection.

You are required to supply the PIN for Pairing. The default PIN is **0000**.

3. Continue to follow the wizard to finish the pairing process.

Scenario B. Laptop with Vista/Windows XP SP2 Bluetooth software

These steps apply to laptop that uses Vista / Windows XP Service Pack 2 generic Bluetooth software. For additional information, please refer to Microsoft's website.

1. Double click the Bluetooth icon in the Taskbar near the clock and the Bluetooth Devices window will show up. Click the **"Add"** button. Put a check mark next to **"My device is set up and ready to be found"**. Then click **"Next"**.



2. Double-click the GPS device you want to establish a connection.

You will be required to supply the PIN for Pairing. The default PIN is **0000**.

3. Continue to follow the wizard to finish the pairing process.
4. Please take note of your Bluetooth Outgoing COM port number and make sure they are the same in your GPS software. This will be the default COM Port used in your GPS software to communicate with the GPS device.

These are the COM (serial) ports assigned to your device.

Outgoing COM port: COM2

Incoming COM port: COM3

GPS-USB

1. Installations and Setup

1. Insert the Setup CD into an available CD-ROM drive. When the screen prompted, click **“GPS Driver Installation”**.
2. Select the driver that matches your GPS model.
3. Follow the on-screen wizard to complete installation. At the end of driver installation, *insert the AmbiCom GPS-USB* into an available USB port on your computer device.

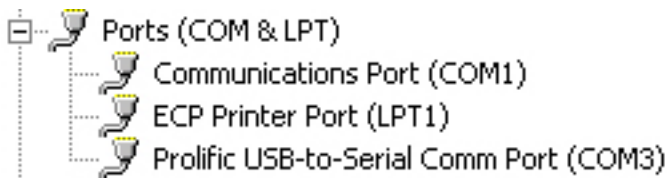
Notice For GPS-USB Rev: 1.0/2.0 and Windows

VISTA: Please install the original driver. At the end of the driver installation, you will need to plug-in the device and Vista might complain it cannot locate the driver and ask you to search online. Select **YES** to update the driver from Microsoft Windows Update.

2. Determine the GPS-USB COM Port value

If you need to know your COM port value for your GPS map software, please follow the steps below.

- Click Start→Run, type devmgmt.msc in the Open box, and then click OK. The “**Device Manager**” windows will open.
- Click on the “+” sign next to “Ports (COM & LPT)” to reveal the COM port value.
- It should listed as the Prolific USB-to-Serial Comm Port (COMxx)



3. Troubleshoot GPS Signal Activities

Q: My GPS system is not tracking any satellites signal.

Ans: Perform this with a full charged PDA/laptop in an open area with clear sky and away from high-power electricity tower, microwave, tall building or any signal interference devices.

Q: The GPS System is still not working after I have followed the solution above.

Ans: Checking the COM Port setting. If your map software has "**Auto Detect**" feature, try to use that to detect the correct COM port number. Most GPS mapping software will assigned it automatically. Laptop user can also check the COM port number manually via Device Manager under System in the Control Panel.

Ans: For BT-GPS, turn off the device for at least 10 seconds and turn it on again.

Ans: For GPS-CF only, press and hold the reset button for 10 seconds while the card is still in the CF slot. Then remove the card from the PDA and re-insert it again.

Ans: Try to perform a soft reset for the PDA or reboot the Laptop

Q: How to configure Microsoft Streets and Trips 2007/2006?

1. Connect the AmbiCom GPS-USB to your device.
2. Start Streets & Trips.
3. On the *Tools* menu, click "**GPS Task Panel**".
4. In the *GPS Task Panel*, click "**Configure GPS...**".
5. Click "**Scan**" to have Streets & Trips find the COM port that has the GPS device connected.
6. Select the correct port and click "**OK**".
7. In the *GPS Task Panel*, put a checkmark next to "**Start GPS tracking:**".

Q: How to configure DeLorme Street Atlas USA 2006.

1. Connect the AmbiCom GPS-USB to your device.
2. Start Streets Atlas 2006.
3. Click the "**Options**" icon from the top tool bar.
4. Click the "**GPS Settings**" tab in the *Options* menu.
5. Select "**Generic NMEA**" from the *Device* option pull down menu.
6. Select the corresponding GPS–USB COM port from the *Port* option pull down menu. (Refer to Page 4)
7. Click "**OK**" to use the setting.
8. Click the "**GPS**" tab from the bottom tool panel.
9. Click "**Start GPS**".

4. Technical Support Help

Weekdays M-F: 9a.m - 6p.m. (Except holidays)

Phone: (408) 321 - 0822

Email: support@ambicom.com

5. Warranty - 1 Year Limited Warranty

As the original purchaser from **AmbiCom Authorized Reseller**, you receive a 1 year limited warranty from AmbiCom: This warranty gives you specific legal rights. You may also have other rights that vary from state to state.

1 Year Limited Warranty

AmbiCom, Inc. warrants its product to be free from defects in materials and workmanship, under normal use and service, for 1 year from the date of purchase from its **Authorized Reseller with proof of purchase**.

USA/Canada

During the warranty period, AmbiCom will, at its option, either repair or replace defective products with similar parts and products. Should the product be identified as defective, the **end user is responsible for the cost of sending the product** to the place of purchase¹ / manufacturer².

Outside USA/Canada

During the warranty period, AmbiCom will, at its option, either repair or replace defective products with similar parts and products. Should the product be identified as defective, the **end user is responsible for the cost of sending the product to the place of purchase¹ / manufacturer² and the cost of returning the product to the end user.**

Warranty Notice

Any replaced or repaired product has a ninety-day (90-day) warranty or the remainder of the initial warranty period, whichever is longer.

RMA number and Proof of Purchase are required for all warranty service.

¹if within store return policy period. Check with the store policy.

²if store return policy has expired or requesting for a warranty service.

AmbiCom, Inc. shall not be responsible for any software, firmware, information or memory data of customer contained in, stored on, or integrated with any products returned to AmbiCom, Inc. pursuant to any warranty.

Exclusion: The warranty on your products shall not apply to defect or damages resulting from:

- Improper or inadequate handling or installation of the product operation outside the environmental specification for the products.
- Incidental, contingent, or consequential charges.
- Power spikes or other power related damage.
- Compatibility problems with any other software of hardware products.
- Installation of any other software of hardware products.
- Physical damage causes by misuse, misapplication or negligence.

Warranty Limitations

The warranty set forth above is exclusive and no other warranty, whether written or oral is expressed or implied.

AmbiCom, Inc. specifically disclaims the implied warranties of merchantability and fitness for a particular purpose.

AmbiCom, Inc. Also specifically disclaims any responsibility for any incidental or consequential damages that its products may cause. A buyer's recourse shall be strictly limited to those contained in this warranty. Some states do not allow these limitations on the length of an implied warranty, so the above limitations or exclusions may not apply to you. However, any implied warranty or merchantability of fitness for a particular purpose is for a period of 1 year on this written warranty.

AmbiCom, Inc. reserves the right to change its warranty policy without prior notice. Information provided in this manual is subject to change without prior notice.

For last minute warranty changes that is not printed as time of publishing, please contact support@ambicom.com.

Battery

This product uses a Lithium-Ion battery. Please charge fully before first use. **THE LITHIUM-ION BATTERY CONTAINED IN THE PRODUCT MUST BE RECYCLED OR DISPOSED OF PROPERLY. USE ONLY WITH SUPPLIED CHARGER(S) AND SUPPLIED AC ADAPTOR FOR BATTERY CHARGING.**

FCC

This equipment has been tested and found to comply with the limits for a Class B digital device, pursuant to Part 15 of the FCC Rules. These limits are designed to provide reasonable protection against harmful interference in a residential installation.

This equipment complies with FCC RF radiation exposure limits set forth for an uncontrolled environment. This equipment should be installed and operated with a minimum distance of 20cm between the radiator and your body. This equipment generates, uses and can radiate radio frequency energy and, if not installed and used in accordance with the instructions, may cause harmful interference to radio communications. However, there is no guarantee that interference will not occur in a particular installation.

If this equipment does cause harmful interference to radio or television reception, which can be determined by turning the equipment off and on, the user is encouraged to try to correct the interference by one or more of the following measures:

- Reorient or relocate the receiving antenna.
- Increase the separation between the equipment and receiver.
- Connect the equipment into an outlet on a circuit different from that to which the receiver is connected.
- Consult the dealer or an experienced radio/TV technician for help.

Any changes or modifications not expressly approved by the grantee of this device could void the user's authority to operate the equipment.

Free Manuals Download Website

<http://myh66.com>

<http://usermanuals.us>

<http://www.somanuals.com>

<http://www.4manuals.cc>

<http://www.manual-lib.com>

<http://www.404manual.com>

<http://www.luxmanual.com>

<http://aubethermostatmanual.com>

Golf course search by state

<http://golfingnear.com>

Email search by domain

<http://emailbydomain.com>

Auto manuals search

<http://auto.somanuals.com>

TV manuals search

<http://tv.somanuals.com>