

AmbiCom Wireless-N Broadband Router
AmbiCom Wireless-N Broadband Router Kit

Model:

WL250N-AR

WL250-KIT

User's Manual

Version: 1.0
(November, 2008)

COPYRIGHT

Copyright ©2008/2009 by AmbiCom, Inc. All rights reserved. No part of this publication may be reproduced, transmitted, transcribed, stored in a retrieval system, or translated into any language or computer language, in any form or by any means, electronic, mechanical, magnetic, optical, chemical, manual or otherwise, without the prior written permission of AmbiCom, Inc. AmbiCom, Inc makes no representations or warranties, either expressed or implied, with respect to the contents hereof and specifically disclaims any warranties, merchantability or fitness for any particular purpose. Any software described in this manual is sold or licensed "as is". Should the programs prove defective following their purchase, the buyer (and not this company, its distributor, or its dealer) assumes the entire cost of all necessary servicing, repair, and any incidental or consequential damages resulting from any defect in the software. Further, AmbiCom, Inc reserves the right to revise this publication and to make changes from time to time in the contents thereof without obligation to notify any person of such revision or changes.

Federal Communication Commission Interference Statement

FCC Part 15

This equipment has been tested and found to comply with the limits for a Class B digital device, pursuant to Part 15 of FCC Rules. These limits are designed to provide reasonable protection against harmful interference in a residential installation. This equipment generates, uses, and can radiate radio frequency energy and, if not installed and used in accordance with the instructions, may cause harmful interference to radio communications. However, there is no guarantee that interference will not occur in a particular installation. If this equipment does cause harmful interference to radio or television reception, which can be determined by turning the equipment off and on, the user is encouraged to try to correct the interference by one or more of the following measures:

1. Reorient or relocate the receiving antenna.
2. Increase the separation between the equipment and receiver.
3. Connect the equipment into an outlet on a circuit different from that to which the receiver is connected.
4. Consult the dealer or an experienced radio technician for help.

FCC Caution

This equipment must be installed and operated in accordance with provided instructions and a minimum 20 cm spacing must be provided between computer mounted antenna and person's body (excluding extremities of hands, wrist and feet) during wireless modes of operation.

This device complies with Part 15 of the FCC Rules. Operation is subject to the following two conditions: (1) this device may not cause harmful interference, and (2) this device must accept any interference received, including interference that may cause undesired operation.

Any changes or modifications not expressly approved by the party responsible for compliance could void the authority to operate equipment.

Federal Communication Commission (FCC) Radiation Exposure Statement

This equipment complies with FCC radiation exposure set forth for an uncontrolled environment. In order to avoid the possibility of exceeding the FCC radio frequency exposure limits, human proximity to the antenna shall not be less than 20cm (8 inches) during normal operation.

The antenna(s) used for this transmitter must not be co-located or operating in conjunction with any other antenna or transmitter.

The equipment version marketed in US is restricted to usage of the channels 1-11 only.

R&TTE Compliance Statement

This equipment complies with all the requirements of DIRECTIVE 1999/5/EC OF THE EUROPEAN PARLIAMENT AND THE COUNCIL of March 9, 1999 on radio equipment and telecommunication terminal Equipment and the mutual recognition of their conformity (R&TTE).

The R&TTE Directive repeals and replaces in the directive 98/13/EEC (Telecommunications Terminal Equipment and Satellite Earth Station Equipment) As of April 8, 2000.

Safety

This equipment is designed with the utmost care for the safety of those who install and use it. However, special attention must be paid to the dangers of electric shock and static electricity when working with electrical equipment. All guidelines of this and of the computer manufacture must therefore be allowed at all times to ensure the safe use of the equipment.

EU Countries Intended for Use

The ETSI version of this device is intended for home and office use in Austria, Belgium, Denmark, Finland, France, Germany, Greece, Ireland, Italy, Luxembourg, the Netherlands, Portugal, Spain, Sweden, and the United Kingdom.

The ETSI version of this device is also authorized for use in EFTA member states: Iceland, Liechtenstein, Norway, and Switzerland.

EU Countries Not intended for use

None.

CATALOG
CHAPTER I: PRODUCT INFORMATION

- 1-1 Introduction And Safety Information
- 1-2 Safety Information
- 1-3 System Requirements
- 1-4 Package Contents
- 1-5 Familiar With Your New Wireless Broadband Router

CHAPTER II: SYSTEM AND NETWORK SETUP

- 2-1 Connecting Your Devices
- 2-2 Connecting To Wireless Broadband Router By Web Browser
 - 2-2-1 Windows 95/98/Me IP Address Setup
 - 2-2-2 Windows 2000 IP Address Setup
 - 2-2-3 Windows XP IP Address Setup
 - 2-2-4 Windows Vista IP Address Setup
 - 2-2-5 Router IP Address Lookup
- 2-3 Using 'Quick Setup'
 - 2-3-1 Setup Procedures For 'Cable Modem'
 - 2-3-2 Setup Procedures For 'Fixed-IP xDSL'
 - 2-3-3 Setup Procedures For 'PPPoE xDSL'
 - 2-3-4 Setup Procedures For 'PPTP xDSL'
 - 2-3-5 Setup Procedures For 'L2TP xDSL'
 - 2-3-6 Setup Procedures For 'Telstra Big Pond'
- 2-4 Basic Setup
 - 2-4-1 Time Zone And Time Auto-Synchronization
 - 2-4-2 Changing The Management Password
 - 2-4-3 Remote Management
- 2-5 Setup Internet Connection (WAN Setup)
 - 2-5-1 Setup Procedures For 'Dynamic IP'
 - 2-5-2 Setup Procedures For 'Static IP'
 - 2-5-3 Setup Procedures For 'PPPoE'
 - 2-5-4 Setup Procedures For 'PPTP'
 - 2-5-5 Setup Procedures For 'L2TP'
 - 2-5-6 Setup Procedures For 'Telstra Big Pond'
 - 2-5-7 Setup Procedures For 'DNS'
 - 2-5-8 Setup Procedures For 'DDNS'
- 2-6 Wired LAN Configurations
 - 2-6-1 LAN IP section
 - 2-6-2 DHCP Server
 - 2-6-3 Static DHCP Leases Table

2-7 Wireless LAN Configurations

2-7-1 Basic Wireless Settings

2-7-1-1 Setup Procedures For 'AP'

2-7-1-2 Setup Procedures For 'Station-Infrastructure'

2-7-1-3 Setup Procedures For 'AP Bridge - Point to Point'

2-7-1-4 Setup Procedures For 'AP Bridge - Point to Multi Point'

2-7-1-5 Setup Procedures For 'AP Bridge - WDS'

2-7-1-6 Setup Procedures For 'Universal Repeater'

2-7-2 Advanced Wireless Settings

2-7-3 Wireless Security

2-7-3-1 Disable Wireless Security

2-7-3-2 WEP - Wired Equivalent Privacy

2-7-3-3 Wi-Fi Protected Access (WPA)

2-7-3-4 WPA RADIUS

2-7-4 Wireless Access Control

2-7-5 Wi-Fi Protected Setup (WPS)

2-7-6 Security Tips For Wireless Network

CHAPTER III: ADVANCED FUNCTIONS

3-1 Quality OF Service (QoS)

3-1-1 Basic QoS Settings

3-1-2 Add A New QoS rule

3-2 Network Address Translation (NAT)

3-2-1 Basic NAT Settings (Enable or disable NAT function)

3-2-2 Port Forwarding

3-2-3 Virtual Server

3-2-4 Port Mapping For Special Applications

3-2-5 UPnP Setting

3-2-6 ALG Settings

3-3 Firewall

3-3-1 Access Control

3-3-1-1 Add PC

3-3-2 URL Blocking

3-3-3 DoS Attack Prevention

3-3-3-1 DoS - Advanced Settings

3-3-4 Demilitarized Zone (DMZ)

3-4 System Status

3-4-1 System Information And Firmware Version

3-4-2 Internet Connection Status

3-4-3 Device Status

3-4-4 System Log

3-4-5 Active DHCP Client List

3-4-6 Statistics

3-5 Configuration Backup And Restore

3-6 Firmware Upgrade

3-7 System Reset

CHAPTER IV: APPENDIX

4-1 Hardware Specification

4-2 Troubleshooting

4-3 Glossary

CHAPTER I: PRODUCT INFORMATION

1-1 Introduction And Safety Information

Thank you for purchasing this wireless broadband router! This high cost-efficiency router is the best choice for **Small office / Home office** users, all computers and network devices can share a single xDSL / cable modem Internet connection at high speed. Easy install procedures allows any computer users to setup a network environment in very short time - within minutes, even inexperienced. When the number of your computers and network-enabled devices grow, you can also expand the number of network slot by simple attach a hub or switch, to extend the scope of your network!

With built-in IEEE 802.11b/g/Draft-N wireless network capability, all computers and wireless-enabled network devices (*including PDA, cellular phone, game console, and more!*) can connect to this wireless router without additional cabling. Draft-N wireless capability also gives you the highest speed of wireless experience ever! With a compatible wireless card installed in your PC, you can transfer file for up to 300Mbps (transfer data rate)! The radio coverage is also extended!

Other features of this router including:

- Allow multiple users to share a single Internet line
- Supports up to 253 users
- Share a single Cable or xDSL internet connection
- Access private LAN servers from the internet
- Four wired LAN ports (10/100M) and one WAN port (10/100M)
- Provides IEEE 802.11b/g/Draft-N wireless LAN capability
- Support DHCP (Server/Client) for easy IP-address setup
- Support multiple wireless modes like: AP, Station-Infrastructure, Wireless Bridge and Universal Repeater.
- Advanced network and security features like: Special Applications, QoS, DMZ, Virtual Servers, Access Control, Firewall.
- Allow you to monitor the router's status like: DHCP Client Log, System Log, Security Log and Device/Connection Status
- Easy to use Web-based GUI for network configuration and management purposes
- Remote management function allows configuration and upgrades from a remote computer (over the Internet)
- Auto MDI / MDI-X function for all wired Ethernet ports.

1-2 Safety Information

In order to keep the safety of users and your properties, please follow the following safety instructions:

1. This router is designed for indoor use only; DO NOT place this router outdoor.
2. DO NOT put this router at or near hot or humid places, like kitchen or bathroom.
3. DO NOT pull any connected cable with force; disconnect it from the router first.
4. If you want to place this router at high places or hang on the wall, please make sure the router is firmly secured. Falling from high places would damage the router and its accessories, and warranty will be voided.
5. Accessories of this router, like antenna and power supply, are danger to small children. They may put the small parts in their nose or month and it could cause serious damage to them. **KEEP THIS ROUTER OUT THE REACH OF CHILDREN!**
6. The router will become hot when being used for long time (***This is normal and is not a malfunction***). DO NOT put this router on paper, cloth, or other flammable materials. DO NOT block the vents.
7. There's no user-serviceable part inside the router. If the router is not working properly, please contact your dealer of purchase and ask for help. DO NOT disassemble the router, warranty will be voided.
8. If the router falls into water when it's powered, DO NOT use your hand to pick it up. Switch the electrical power off before you do anything, or contact an experienced technician for help.
9. If you smell something strange, or even see some smoke coming out from the router or power supply, remove the power supply or switch the electrical power off immediately, and call dealer of purchase for help.

1-3 System Requirements

- Internet connection, provided by xDSL or cable modem with a RJ-45 Ethernet port.
- Computer or network devices with wired or wireless network interface card.
- Web browser (*Microsoft Internet Explorer 4.0 or above, Netscape Navigator 4.7 or above, Opera web browser, or Safari web browser*).
- An available AC power socket (100 – 240V, 50/60Hz)

1-4 Package Contents

Before you starting to use this router, please check if there's anything missing in the package, and contact your dealer of purchase to claim for missing items:

- Broadband router (1 pcs)
- Quick installation guide (1 pcs)
- CD-Rom for user manual and other wireless product drivers (1 pcs)
- A/C power adapter (1 pcs)
- Broadband router stand (1 pcs)

If you have purchase this router as part of the Wireless-N Kit, you will also receive...

- AmbiCom Wireless-N USB Dongle (1 pcs)

1-5 Familiar With Your New Wireless Broadband Router

Front Panel

LED Name	Light Status	Description
POWER	On	Router is switched on and correctly powered.
WLAN	On	Wireless WPS function is enabled.
	Off	Wireless network is switched off.
	Flashing	Wireless LAN activity (transferring or receiving data).
WAN	On	WAN port is connected.
	Off	WAN port is not connected.
	Flashing	WAN activity (transferring or receiving data).
LAN 1-4	On	LAN port is connected.
	Off	LAN port is not connected.
	Flashing	LAN activity (transferring or receiving data).

Back Panel

Item Name	Description
Antenna A / B	These antennas are 3dBi dipole antennas.
Radio ON / OFF	Switch the button to activate or deactivate the wireless functions.
Reset / WPS	Press and hold this button for 10 or more seconds to restore all settings to factory defaults. POWER LED should flash rapidly. Press and hold this button for less than 5 seconds to start WPS function.
1 - 4	Local Area Network (LAN) ports 1 to 4. Connect to computer.
WAN	Wide Area Network (WAN / Internet) port.
Power	Power connector, connects to A/C power adapter.

CHAPTER II: SYSTEM AND NETWORK SETUP

2-1 Connecting Your Devices

Follow the instructions here to connect your computer and other devices to your new wireless router.

1. Connect your xDSL / cable modem to the WAN port of router by using an Ethernet cable.
2. Connect all your computers, network devices (game console, switch / hub) to the LAN port of the router.
3. Connect the A/C power adapter to the wall socket, and then connect it to the 'Power' connector of the router.
4. Please check all LEDs on the front panel. The 'POWER' LED should be steadily on, WAN and LAN LEDs should be on if the computer / network device connected to the respective port of the router is powered on and correctly connected. If POWER LED is not on, or any LED you expected is not on, please recheck the cabling, or refer to '**4-2 Troubleshooting**' for possible reasons and solution.

2-2 Connecting To Wireless Broadband Router By Web Browser

After the above steps in 2-1. The next step you should do is to setup the router with proper network parameters, so it can be worked properly in your network environment. Before you can connect to the router and start the configuration procedures, your computer must obtained an IP address automatically from the router's DHCP server feature. If your computer is setup to use static IP address, or you are unsure, please follow the steps below:

If the operating system of your computer is....

- | | |
|-------------------------|------------------------------|
| Windows 95/98/Me | - please go to section 2-2-1 |
| Windows 2000 | - please go to section 2-2-2 |
| Windows XP | - please go to section 2-2-3 |
| Windows Vista | - please go to section 2-2-4 |

2-2-1 Windows 95/98/Me IP Address Setup:

1. Click the '**Start**' button (it should be located at lower-left corner of your computer), then click control panel. Double-click the **Network** icon. The **Network** window will appear. Select '**TCP/IP**', then click '**Properties**'.
2. Select '**Obtain an IP address from a DHCP server**' and then click '**OK**'.

2-2-2 Windows 2000 IP Address Setup:

1. Click the '**Start**' button (it should be located at lower-left corner of your computer), then click control panel. Double-click the **Network and Dial-up Connections** icon; click **Local Area Connection**. The **Local Area Connection Properties** window will appear. Select '**Internet Protocol (TCP/IP)**' and then click '**Properties**'.
2. Select '**Obtain an IP address automatically**' and '**Obtain DNS server address automatically**', then click '**OK**'.

2-2-3 Windows XP IP Address Setup:

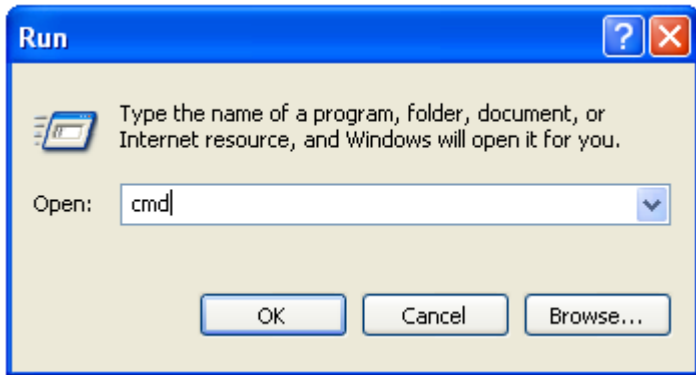
1. Click the '**Start**' button (it should be located at lower-left corner of your computer), then click control panel. Double-click the **Network and Internet Connections** icon, click **Network Connections**, then double-click **Local Area Connection**. The **Local Area Connection Status** window will appear, and then click '**Properties**'.
2. Select '**Obtain an IP address automatically**' and '**Obtain DNS server address automatically**', then click '**OK**'.

2-2-4 Windows Vista IP address setup:

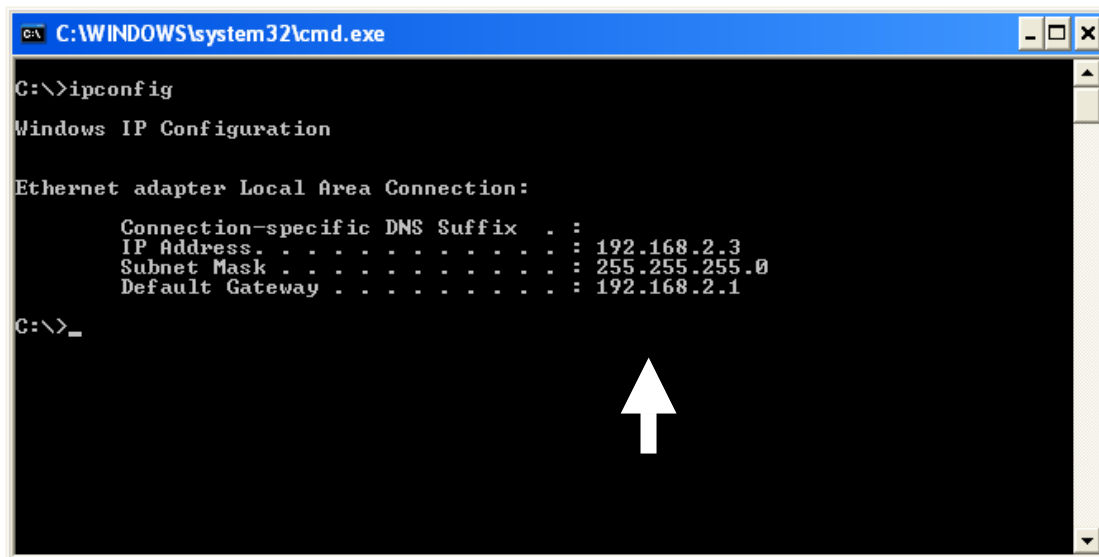
1. Click the 'Start' button (it should be located at lower-left corner of your computer), then click control panel. Click **View Network Status and Tasks**, and then click **Manage Network Connections**. Right-click **Local Area Network**, then select **'Properties'**. The **Local Area Connection Properties** window will appear, select **'Internet Protocol Version 4 (TCP / IPv4)**, and then click **'Properties'**.
2. Select **'Obtain an IP address automatically'** and **'Obtain DNS server address automatically'**, then click **'OK'**.

2-2-5 Router IP Address Lookup

1. Click **'Start'** -> **'Run'** at the bottom-lower corner of your desktop, then type **cmd**, and click **'OK'**.



2. Input **'ipconfig'**, then press the **'Enter'** key on your keyboard. Please note the **'Default Gateway'** IP address (In this example, the IP address of router is 192.168.2.1, *please note that this value may be different.*)

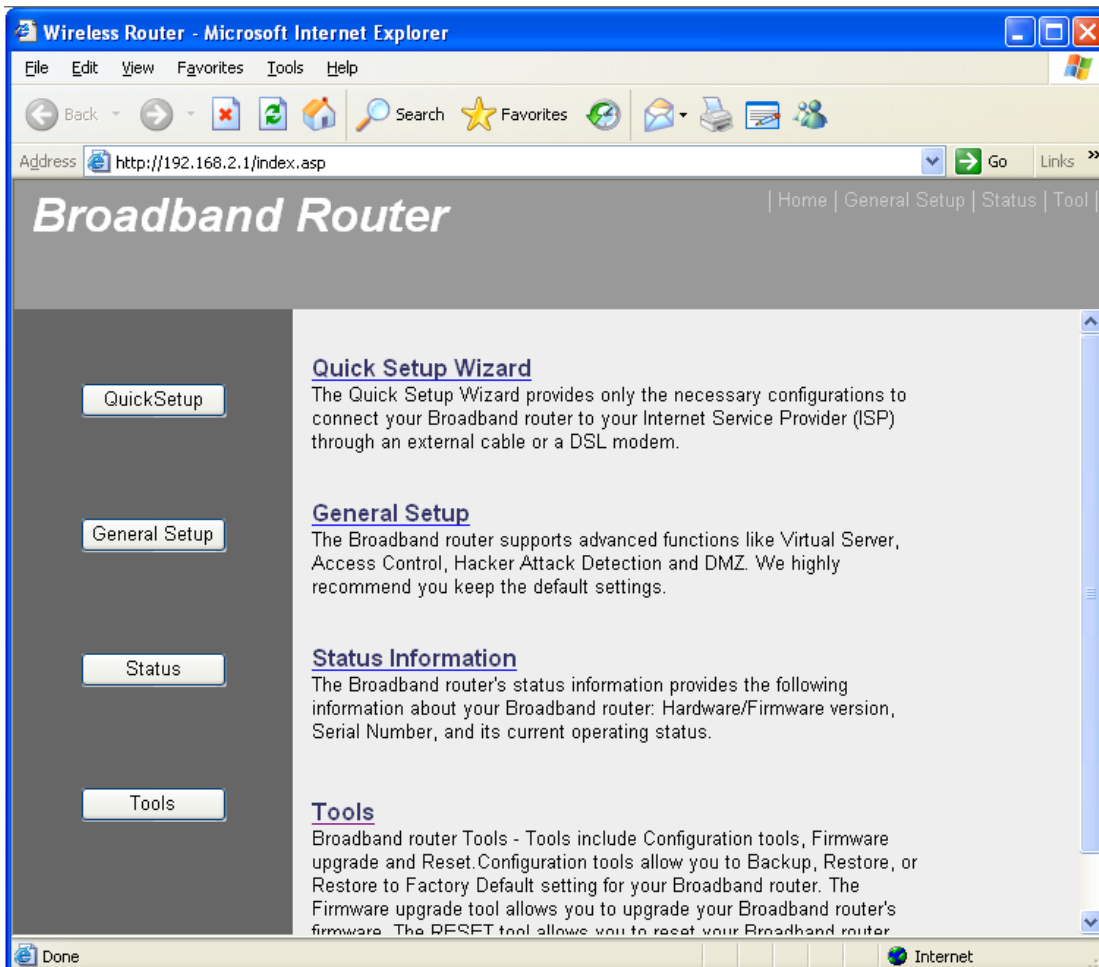


NOTE: If the IP address of 'Default Gateway' is not displayed, or the address followed by 'IP Address' begins with '169', please recheck network connection between your computer and router, and / or go to the beginning of this chapter, to recheck every step of network setup procedure. Alternatively, you can also reboot the computer and try this steps again.

3. Connect to the router's management interface by using a web browser
After your computer obtained an IP address from the router, please start your web browser, and input the '**Default Gateway**' IP address in address bar. The following message should be shown:

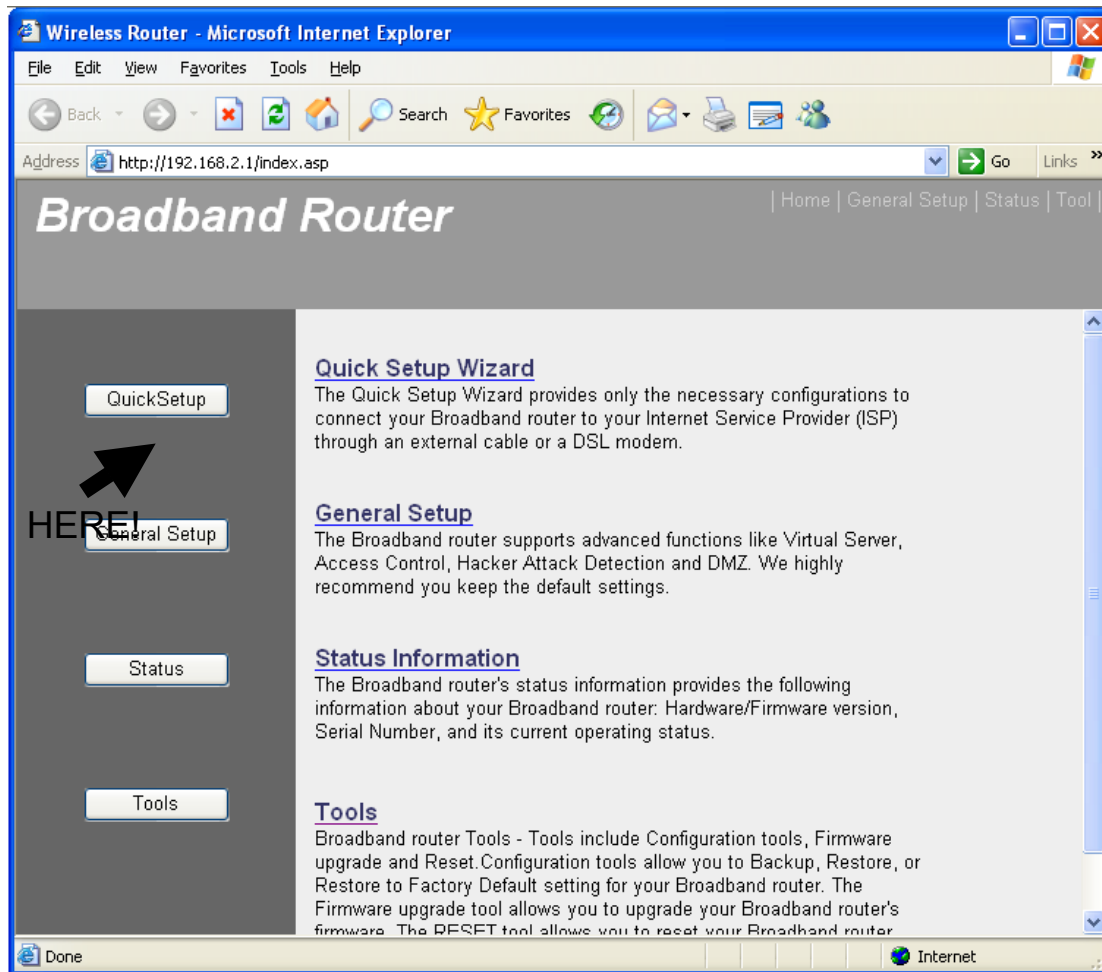


4. Please input user name and password in the field respectively, default user name is '**admin**', and default password is '**1234**', then press the '**OK**' button, and you can see the web management interface of this router.



2-3 Using 'Quick Setup'

This router provides a 'Quick Setup' procedure, which will help you to complete all required settings you need to access the Internet in very short time.



And the following message will be displayed:

1. Set Time Zone

Set Time Zone :	(GMT-06:00)Central Time (US & Canada) <input type="button" value="v"/>	1
Time Server Address :	192.43.244.18	2
Daylight Savings :	<input checked="" type="checkbox"/> Enable Function Times From <input type="button" value="v"/> January <input type="button" value="v"/> 1 To <input type="button" value="v"/> January <input type="button" value="v"/> 1	3
<input type="button" value="Next"/>		

Set Time Zone (1):	Choose your time zone by clicking on the <input type="button" value="v"/> button.
Time Server Address (2):	Input the IP address / host name of time server here. (Default)
Daylight Savings (3):	Enable Daylight saving feature.

2. Broadband Type

Broadband Type

Specify the WAN connection type required by your Internet Service Provider. Specify a Cable modem, Fixed-IP xDSL, PPPoE xDSL or PPTP xDSL connection.

[Cable Modem](#)

A connection through a cable modem requires minimal configuration. When you set up an account with your Cable provider, the Cable provider and your Broadband router will automatically establish a connection, so you probably do not need to enter anything more.

[Fixed-IP xDSL](#)

Some xDSL Internet Service Providers may assign a Fixed IP Address for your Broadband router. If you have been provided with this information, choose this option and enter the assigned IP Address, Subnet Mask, Gateway IP Address and DNS IP Address for your Broadband router.

[PPPoE xDSL](#)

If you connect to the Internet using an xDSL Modem and your ISP has provided you with a Password and a Service Name, then your ISP uses PPPoE to establish a connection. You must choose this option and enter the required information.

[PPTP xDSL](#)

If you connect to the Internet using an xDSL Modem and your ISP has provided you with a Password, Local IP Address, Remote IP Address and a Connection ID, then your ISP uses PPTP to establish a connection. You must choose this option and enter the required information.

[L2TP xDSL](#)

Layer Two Tunneling Protocol is a common connection method used in xDSL connections.

[Telstra Big Pond](#)

If your Internet service is provided by Telstra Big Pond in Australia, you will need to enter your information below, This information is provided by Teistra BigPond.

Please choose the broadband (Internet connection) type you're using. There are six types of Internet connection, they are:

NOTE: Some service providers use 'DHCP' (Dynamic Host Configuration Protocol) to assign IP address to you. In this case, you can choose 'Cable Modem' as Internet connection type; even you're using another connection type, like xDSL. Also, some cable modem uses PPPoE, so you can choose 'PPPoE xDSL' for such cable modem connection, even you're using a cable modem.

Cable Modem	- Please go to section 2-3-1
Fixed-IP xDSL	- Please go to section 2-3-2
PPPoE xDSL	- Please go to section 2-3-3
PPTP xDSL	- Please go to section 2-3-4
L2TP xDSL	- Please go to section 2-3-5
Telstra Big Pond	- Please go to section 2-3-6

If you're not sure, please contact your Internet service provider. A wrong Internet connection type will cause connection problem, and you will not be able to connect to Internet.

2-3-1 Setup Procedures For 'Cable Modem':

Cable Modem

Host Name :	<input type="text"/>	1
MAC address :	<input type="text" value="000000000000"/>	2

Host Name (1):	<i>Please input the host name of your computer, this is optional, and only required if your service provider asks you to do so.</i>
MAC address (2):	<i>If your service provider only permits computer with certain MAC address to access internet, please input MAC address of your computer here. If you're using the computer which used to connect to Internet via cable modem, you can simply press 'Clone Mac address' button to fill the MAC address field with the MAC address of your computer.</i>

When all settings are finished, you'll see the following message displayed on your web browser:

Save setting successfully!

Please press APPLY button to restart the system for changes to take effect.

Please click '**Apply**' button to prepare to restart the router, and you'll see this message:

System Restarting! Please wait for a while !

Please wait for about 30 seconds, then click '**OK!**' button. You'll be back to router management interface again, and the router is ready with new settings.

2-3-2 Setup Procedures For 'Fixed-IP xDSL':

Fixed-IP xDSL

Enter the IP Address, Subnet Mask, Gateway IP Address and DNS IP Address provided to you by your ISP in the appropriate fields.

IP address assigned by your Service Provider :	<input type="text" value="172.1.1.1"/>	1
Subnet Mask :	<input type="text" value="255.255.0.0"/>	2
DNS address :	<input type="text"/>	3
Service Provider Gateway Address :	<input type="text" value="172.1.1.254"/>	4

Back

OK

IP address assigned by your Service Provider (1):	Please input IP address assigned service provider
Subnet Mask (2):	Please input subnet mask assigned by your service provider
DNS address (3):	Please input the IP address of DNS server provided by your service provider.
Service Provider Gateway Address (4):	Please input the IP address of DNS server provided by your service provider.

Note: You must use the addresses provided by your Internet service provider, wrong setting value will cause connection problem.

When all settings are finished, you'll see the following message displayed on your web browser:

Save setting successfully!

Please press APPLY button to restart the system for changes to take effect.

Apply

Please click '**Apply**' button to prepare to restart the router, and you'll see this message:

System Restarting! Please wait for a while !

OK!

Please wait for about 30 seconds, then click '**OK!**' button. You'll be back to router management interface again, and the router is ready with new settings.

2-3-3 Setup Procedures For 'PPPoE xDSL':

PPPoE

Enter the User Name and Password required by your ISP in the appropriate fields. If your ISP has provided you with a "Service Name" enter it in the Service Name field, otherwise, leave it blank.

User Name :	<input type="text"/>	1
Password :	<input type="password"/>	2
Service Name :	<input type="text"/>	3
MTU :	<input type="text" value="1392"/> (512<=MTU Value<=1492)	4
Connection Type :	<input type="button" value="Connect on Demand"/> <input type="button" value="Connect"/> <input type="button" value="Disconnect"/>	5
Idle Time Out :	<input type="text" value="10"/> (1-1000minutes)	6

User Name (1):	Please input user name assigned by your Internet service provider here.
Password (2):	Please input the password assigned by your Internet service provider here.
Service Name (3):	Please give a name to this Internet service. (Optional)
MTU (4):	Please input the MTU value of your network connection here. (Use default value if you don't know).
Connection Type (5):	Please select the connection type of Internet connection you wish to use. <ol style="list-style-type: none"> 1. Continuous: Keep Internet connection alive, do not disconnect. 2. Connect on Demand: Only connects to Internet when there's a connect attempt 3. Manual: Only connects to Internet when 'Connect' button on this page is pressed, and disconnects when 'Disconnect button is pressed.
Idle Time Out (6):	Please input idle time out. Specify the time to shutdown Internet connects after no internet activity is detected by minute. This option is only available when connection type is 'Connect on Demand'.

When all settings are finished, you'll see the following message displayed on your web browser:

Save setting successfully!

Please press APPLY button to restart the system for changes to take effect.

Please click '**Apply**' button to prepare to restart the router, and you'll see this message:

System Restarting! Please wait for a while !

Please wait for about 30 seconds, then click '**OK!**' button. You'll be back to router management interface again, and the router is ready with new settings.

2-3-4 Setup Procedures For 'PPTP xDSL':

PPTP xDSL requires two kinds of setting:

WAN interface setting (setup IP address) and PPTP setting (PPTP user name and password).

• **WAN Interface Settings**

Obtain an IP address automatically

Host Name :

MAC address :

Use the following IP address

IP address :

Subnet Mask :

Default Gateway :

Select the type of how you obtain IP address from your service provider here. You can choose 'Obtain an IP address automatically' (equal to DHCP, please refer to 'Cable Modem' section above), or 'Use the following IP address' (i.e. static IP address).

WAN interface settings must be correctly set, or the Internet connection will fail even those settings of PPTP settings are correct. Please contact your Internet service provider if you don't know what you should fill in these fields.

PPTP settings section:

• **PPTP Settings**

User ID : 1

Password : 2

PPTP Gateway : 3

Connection ID : (Optional) 4

MTU : (512<= MTU Value<=1492) 5

BEZEQ-ISRAEL : Enable (for BEZEQ network in ISRAEL use only) 6

Connection Type : 7

Idle Time Out : (1-1000minutes) 8

User ID (1):	Please input user ID (user name) assigned by your Internet service provider here.
Password (2):	Please input the password assigned by your Internet service provider here.
PPTP Gateway (3):	Please input the IP address of PPTP gateway assigned by your Internet service provider here.
Connection ID (4):	Please input the connection ID here. (Optional)
MTU (5):	Please input the MTU value of your network connection here. (Use default value if you don't know).
BEZEQ-ISRAEL (6):	Check if you're using the service provided by BEZEQ network in Israel.
Connection type (7):	Please select the connection type of Internet connection you wish to use. 1. Continuous: Keep Internet connection alive, do not disconnect. 2. Connect on Demand: Only connects to Internet when there's a connect attempt

	3. Manual: Only connects to Internet when 'Connect' button on this page is pressed, and disconnects when 'Disconnect button is pressed.
<i>Idle Time Out (8):</i>	<i>Please input idle time out.</i> Specify the time to shutdown Internet connects after no internet activity is detected by minute. This option is only available when connection type is 'Connect on Demand'.

When all settings are finished, you'll see the following message displayed on your web browser:

Save setting successfully!

Please press APPLY button to restart the system for changes to take effect.

Please click '**Apply**' button to prepare to restart the router, and you'll see this message:

System Restarting! Please wait for a while !

Please wait for about 30 seconds, then click '**OK!**' button. You'll be back to router management interface again, and the router is ready with new settings.

2-3-5 Setup Procedures For 'L2TP xDSL':

L2TP xDSL requires two kinds of setting:

WAN interface setting (setup IP address) and L2TP setting (L2TP user name and password).

• **WAN Interface Settings**

Obtain an IP address automatically

Host Name :

MAC address :

Use the following IP address

IP address :

Subnet Mask :

Default Gateway :

Select the type of how you obtain IP address from your service provider here. You can choose 'Obtain an IP address automatically' (equal to DHCP, please refer to 'Cable Modem' section above), or 'Use the following IP address' (i.e. static IP address).

WAN interface settings must be correctly set, or the Internet connection will fail even those settings of L2TP settings are correct. Please contact your Internet service provider if you don't know what you should fill in these fields.

L2TP settings section:

• **L2TP Settings**

User ID : 1

Password : 2

L2TP Gateway : 3

MTU : (512<=MTU Value<=1492) 4

Connection Type : 5

Idle Time Out : (1-1000 minutes) 6

User ID (1):	Please input user ID (user name) assigned by your Internet service provider here.
Password (2):	Please input the password assigned by your Internet service provider here.
L2TP Gateway (3):	Please input the IP address of L2TP gateway assigned by your Internet service provider here.
MTU (4):	Please input the MTU value of your network connection here. If you don't know, you can use default value.
Connection type (5):	<p>Please select the connection type of Internet connection you wish to use.</p> <ol style="list-style-type: none"> 1. Continuous: Keep Internet connection alive, do not disconnect. 2. Connect on Demand: Only connects to Internet when there's a connect attempt 3. Manual: Only connects to Internet when 'Connect' button on this page is pressed, and disconnects when 'Disconnect button is pressed.
Idle Time Out (6):	Please input idle time out.

	Specify the time to shutdown Internet connects after no internet activity is detected by minute. This option is only available when connection type is 'Connect on Demand'.
--	---

When all settings are finished, you'll see the following message displayed on your web browser:

Save setting successfully!

Please press APPLY button to restart the system for changes to take effect.

Please click '**Apply**' button to prepare to restart the router, and you'll see this message:

System Restarting! Please wait for a while !

Please wait for about 30 seconds, then click '**OK!**' button. You'll be back to router management interface again, and the router is ready with new settings.

2-3-6 Setup Procedures For 'Telstra Big Pond':

Telstra Big Pond (Australia Only)
If your Internet service is provided by Telstra Big Pond in Australia, you will need to enter your information below. This information is provided by Teistra BigPond.

User Name :	<input type="text"/>	1
Password :	<input type="text"/>	2
<input type="checkbox"/> User decide login server manually		3
Login Server :	<input type="text" value="0.0.0.0"/>	4

This setting only works when you're using Telstra big pond's network service in Australia.

<i>User Name (1):</i>	<i>Please input the user name assigned by Telstra.</i>
<i>Password (2):</i>	<i>Please input the password assigned by Telstra.</i>
<i>User device login server manually (3):</i>	<i>Check this box to choose login server by yourself.</i>
<i>Login Server (4):</i>	<i>Please input the IP address of login server here.</i>

When all settings are finished, you'll see the following message displayed on your web browser:

Save setting successfully!

Please press APPLY button to restart the system for changes to take effect.

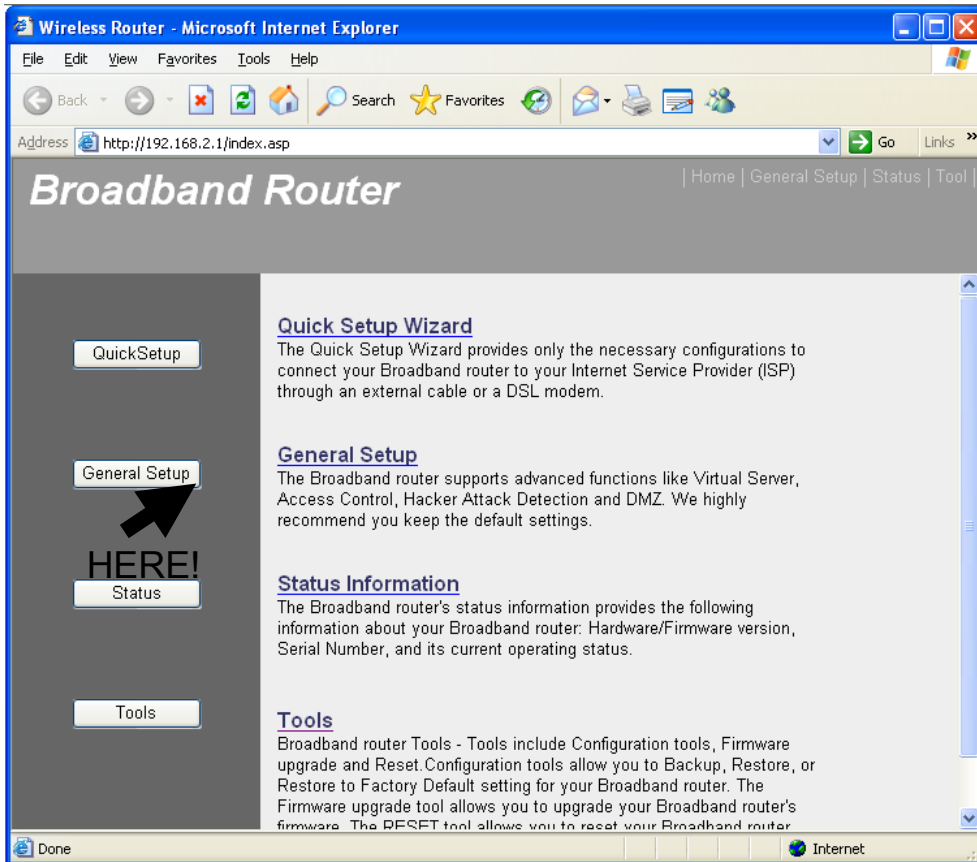
Please click '**Apply**' button to prepare to restart the router, and you'll see this message:

System Restarting! Please wait for a while !

Please wait for about 30 seconds, then click '**OK!**' button. You'll be back to router management interface again, and the router is ready with new settings.

2-4 Basic Setup

Click '**General Setup**' button on the left, or click '**General Setup**' link at the upper-right corner of web management interface.



2-4-1 Time Zone And Time Auto-Synchronization

Please click '**System**' menu on the left of web management interface, then click '**Time Zone**', and the following message will be displayed on your web browser: Please select time zone at '**Set time zone**' drop-down list, and input the IP address or host name of time server. If you want to enable daylight savings setting, please check '**Enable Function**' box, and set the duration of daylight setting. When you finish, click '**Apply**'. You'll see the following message displayed on web browser:

Save setting successfully!

You may press CONTINUE button to continue configuring other settings or press APPLY button to restart the system for changes to take effect

Press '**Continue**' to save the settings made and back to web management interface; press '**Apply**' to save the settings made and restart the router so the settings will take effect after it reboots.

2-4-2 Changing The Management Password

Default password of this router is 1234, and it's displayed on the login prompt when accessed from web browser. There's a security risk if you don't change the default password, since everyone can see it. This is very important when you have wireless function enabled.

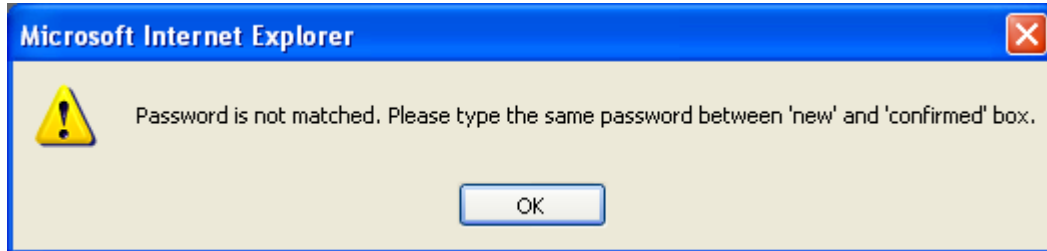
Please click '**System**' menu on the left of web management interface, then click '**Password Settings**', and the following message will be displayed on your web browser:

Current Password :	<input type="text"/>	1
New Password :	<input type="text"/>	2
Confirmed Password :	<input type="text"/>	3

Current Password (1):	Please input current password here.
New Password (2):	Please input new password here.
Confirmed Password (3):	Please input new password here again.

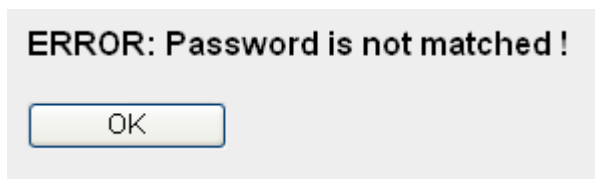
When you finish, click '**Apply**'. If you want to keep original password unchanged, click '**Cancel**'.

If the password you typed in '**New Password**' (2) and '**Confirmed Password**' (3) field are not the same, you'll see the following message:



Please retype the new password again when you see above message.

If you see the following message:



It means the content in '**Current Password**' field is wrong, please click '**OK**' to go back to previous menu, and try to input current password again.

If the current and new passwords are correctly entered, after you click **'Apply'**, you'll be prompted to input your new password again to login:



Please use new password to enter web management interface again, and you should be able to login with new password.

2-4-3 Remote Management

This router does not allow management access from Internet, to prevent possible security risks (especially when you defined a weak password, or didn't change default password). However, you can still management this router from a specific IP address by enabling the **'Remote Management'** Function.

Please click **'System'** menu on the left of web management interface, then click **'Remote Management'**, and the following message will be displayed on your web browser:

Host address	Port	Enabled
<input type="text" value="0.0.0.0"/> 1	<input type="text" value="8080"/> 2	<input type="checkbox"/> 3

<i>Host Address (1):</i>	<i>Input the IP address of the remote host you wish to initiate a management access.</i>
<i>Port (2):</i>	<i>You can define the port number this router should expect an incoming request. If you're providing a web service (default port number is 80), you should try to use other port number. You can use the default port setting '8080', or something like '32245' or '1429'. (Any integer between 1 and 65534)</i>
<i>Enabled (3):</i>	<i>Select the field to start the configuration.</i>

When you finish with all settings, click '**Apply**', and you'll see the following message displayed on web browser:

Save setting successfully!

You may press CONTINUE button to continue configuring other settings or press APPLY button to restart the system for changes to take effect

Continue

Apply

Press '**Continue**' to save the settings made and back to web management interface; press '**Apply**' to save the settings made and restart the router so the settings will take effect after it reboots.

NOTE: When you want to manage this router from another computer on Internet, you have to input the IP address and port number of this router. If your Internet service provider assigns you with a static IP address, it will not be a problem; but if the IP address your service provider assigns to you will vary every time you establish an Internet connection, this will be a problem.

Please either asks your service provider to give you a static IP address, or use dynamic IP to host name mapping services like DDNS. Please refer to chapter 2-5-8 'DDNS client' for details.

NOTE: Default port number the web browser will use is '80'. If the 'Port' setting in this page is not '80', you have to assign the port number in the address bar of web browser manually.

For example, if the IP address of this router is 1.2.3.4, and the port number you set is 8888, you have to input following address in the address bar of web browser:

http://1.2.3.4:8888

2-5 Setup Internet Connection (WAN Setup)

Internet connections setup can be done by using 'Quick Setup' menu described in chapter 2-3. However, you can setup WAN connections up by using WAN configuration menu. You can also set advanced functions like DDNS (Dynamic DNS) here.

Please click '**WAN**' menu on the left of web management interface, and the following message will be displayed on your web browser:

Please select an Internet connection method depend on the type of connection you're using. You can either click the connection method on the left (1) or right (2). If you select the connection method on the right, please click 'More Configuration' button after a method is selected.

System

- WAN
- Dynamic IP
- Static IP
- PPPoE
- PPTP
- L2TP
- Telstra Big Pond
- DNS
- DDNS

LAN

- Wireless
- QoS
- NAT
- Firewall

WAN Settings

The Broadband router can be connected to your Service Provider through the following methods

- Dynamic IP
Obtains an IP Address automatically from your Service Provider.
- Static IP
Uses a Static IP Address. Your Service Provider gives a Static IP Address to access Internet services.
- PPPoE
PPP over Ethernet is a common connection method used in xDSL connections.
- PPTP
Point-to-Point Tunneling Protocol is a common connection method used in xDSL connections.
- L2TP
Layer Two Tunneling Protocol is a common connection method used in xDSL connections.
- Telstra Big Pond
Telstra Big Pond is a Internet service is provided in Australia.

[More Configuration](#)

Dynamic IP	- Please go to section 2-5-1
Static IP	- Please go to section 2-5-2
PPPoE	- Please go to section 2-5-3
PPTP	- Please go to section 2-5-4
L2TP	- Please go to section 2-5-5
Telstra Big Pond	- Please go to section 2-5-6
DNS	- Please go to section 2-5-7
DDNS	- Please go to section 2-5-8

2-5-1 Setup Procedures For 'Dynamic IP':

Dynamic IP

The Host Name is optional, but may be required by some Service Providers. The default MAC Address is set to the WAN physical interface on the Broadband router. If required by your Service Provider, you can use the 'Clone MAC Address' button to copy the MAC Address of the Network Interface Card installed in your PC and replace the WAN MAC Address with this MAC Address.

Host Name :	<input type="text"/>	1
MAC address :	<input type="text" value="000000000000"/>	2

Host Name (1):	<i>Please input the host name of your computer, this is optional, and only required if your service provider asks you to do so.</i>
MAC address (2):	<i>If your service provider only permits computer with certain MAC address to access internet, please input MAC address of your computer here. If you're using the computer which used to connect to Internet via cable modem, you can simply press 'Clone Mac address' button to fill the MAC address field with the MAC address of your computer.</i>

After you finish with all settings, please click '**Apply**', the following message will be displayed on your web browser:

Save setting successfully!

You may press CONTINUE button to continue configuring other settings or press APPLY button to restart the system for changes to take effect

Please click '**Continue**' to back to previous setup menu; to continue on router setup, or click '**Apply**' to reboot the router so the settings will take effect (Please wait for about 30 seconds while router is rebooting).

2-5-2 Setup Procedures For 'Static IP':

Static IP

If your Service Provider has assigned a Fixed IP address; enter the assigned IP Address, Subnet Mask and the Gateway IP Address provided.

IP address assigned by your Service Provider :	<input type="text" value="192.168.1.10"/>	1
Subnet Mask :	<input type="text" value="255.255.255.0"/>	2
Service Provider Gateway Address :	<input type="text" value="192.168.1.254"/>	3

<i>IP address assigned by your Service Provider (1):</i>	<i>Please input IP address assigned service provider</i>
<i>Subnet Mask (2):</i>	<i>Please input subnet mask assigned by your service provider</i>
<i>Service Provider Gateway Address (3):</i>	<i>Please input the IP address of DNS server provided by your service provider.</i>

After you finish with all settings, please click '**Apply**', the following message will be displayed on your web browser:

Save setting successfully!

You may press CONTINUE button to continue configuring other settings or press APPLY button to restart the system for changes to take effect

Please click '**Continue**' to back to previous setup menu; to continue on router setup, or click '**Apply**' to reboot the router so the settings will take effect (Please wait for about 30 seconds while router is rebooting).

2-5-3 Setup Procedures For 'PPPoE':

PPPoE ?

Enter the PPPoE User Name and Password assigned by your Service Provider. The Service Name is normally optional, but may be required by some Service Providers. Enter a Idle Time (in minutes) to define a maximum period of time for which the Internet connection is maintained during inactivity. If the connection is inactive for longer than the Maximum Idle Time, then the connection will be dropped. You can enable the Connect on Demand option to automatically re-establish the connection as soon as you attempt to access the Internet again. If your Internet Service Provider requires the use of PPPoE, enter the information below.

User Name :	<input type="text"/>	1
Password :	<input type="password"/>	2
Service Name :	<input type="text"/>	3
MTU :	<input type="text" value="1392"/> (512<=MTU Value<=1492)	4
Connection Type :	<input type="button" value="Continuous"/> <input type="button" value="Connect"/> <input type="button" value="Disconnect"/>	5
Idle Time Out :	<input type="text" value="10"/> (1-1000minutes)	6

User Name (1):	Please input user name assigned by your Internet service provider here.
Password (2):	Please input the password assigned by your Internet service provider here.
Service Name (3):	Please give a name to this Internet service. (Optional)
MTU (4):	Please input the MTU value of your network connection here. (Use default value if you don't know).
Connection Type (5):	<p>Please select the connection type of Internet connection you wish to use.</p> <p>4. Continuous: Keep Internet connection alive, do not disconnect.</p> <p>5. Connect on Demand: Only connects to Internet when there's a connect attempt</p> <p>6. Manual: Only connects to Internet when 'Connect' button on this page is pressed, and disconnects when 'Disconnect' button is pressed.</p>
Idle Time Out (6):	<p>Please input idle time out.</p> <p>Specify the time to shutdown Internet connects after no internet activity is detected by minute. This option is only available when connection type is 'Connect on Demand'.</p>

After you finish with all settings, please click '**Apply**', the following message will be displayed on your web browser:

Save setting successfully!

You may press CONTINUE button to continue configuring other settings or press APPLY button to restart the system for changes to take effect

Please click '**Continue**' to back to previous setup menu; to continue on router setup, or click '**Apply**' to reboot the router so the settings will take effect (Please wait for about 30 seconds while router is rebooting).

2-5-4 Setup Procedures For 'PPTP':

PPTP requires two kinds of setting:

WAN interface setting (setup IP address) and PPTP setting (PPTP user name and password).

• **WAN Interface Settings**

Obtain an IP address automatically

Host Name :

MAC address :

Use the following IP address

IP address :

Subnet Mask :

Default Gateway :

Select the type of how you obtain IP address from your service provider here. You can choose '**Obtain an IP address automatically**' (equal to DHCP, please refer to 'Cable Modem' section above), or '**Use the following IP address**' (i.e. static IP address)

WAN interface settings must be correctly set, or the Internet connection will fail even those settings of PPTP settings are correct. Please contact your Internet service provider if you don't know what you should fill in these fields.

PPTP settings section:

• **PPTP Settings**

User ID :	<input type="text"/>	1
Password :	<input type="text"/>	2
PPTP Gateway :	<input type="text" value="0.0.0.0"/>	3
Connection ID :	<input type="text"/> (Optional)	4
MTU :	<input type="text" value="1392"/> (512<= MTU Value<=1492)	5
BEZEQ-ISRAEL :	<input type="checkbox"/> Enable (for BEZEQ network in ISRAEL use only)	6
Connection Type :	<input type="button" value="Continuous"/> <input type="button" value="Connect"/> <input type="button" value="Disconnect"/>	7
Idle Time Out :	<input type="text" value="10"/> (1-1000minutes)	8

User ID (1):	Please input user ID (user name) assigned by your Internet service provider here.
Password (2):	Please input the password assigned by your Internet service provider here.
PPTP Gateway (3):	Please input the IP address of PPTP gateway assigned by your Internet service provider here.
Connection ID (4):	Please input the connection ID here. (Optional)
MTU (5):	Please input the MTU value of your network connection here. (Use default value if you don't know).
BEZEQ-ISRAEL (6):	Check if you're using the service provided by BEZEQ network in Israel.
Connection type (7):	Please select the connection type of Internet connection you wish to use. 4. Continuous: Keep Internet connection alive, do not disconnect.

	<p>5. Connect on Demand: Only connects to Internet when there's a connect attempt</p> <p>6. Manual: Only connects to Internet when 'Connect' button on this page is pressed, and disconnects when 'Disconnect button is pressed.</p>
<i>Idle Time Out (8):</i>	<p><i>Please input idle time out.</i></p> <p>Specify the time to shutdown Internet connects after no internet activity is detected by minute. This option is only available when connection type is 'Connect on Demand'.</p>

When all settings are finished, you'll see the following message displayed on your web browser:

Save setting successfully!

Please press APPLY button to restart the system for changes to take effect.

Please click '**Apply**' button to prepare to restart the router, and you'll see this message:

System Restarting! Please wait for a while !

Please wait for about 30 seconds, then click '**OK!**' button. You'll be back to router management interface again, and the router is ready with new settings.

2-5-5 Setup Procedures For 'L2TP':

L2TP requires two kinds of setting:

WAN interface setting (setup IP address) and L2TP setting (L2TP user name and password).

• **WAN Interface Settings**

Obtain an IP address automatically

Host Name :

MAC address :

Use the following IP address

IP address :

Subnet Mask :

Default Gateway :

Select the type of how you obtain IP address from your service provider here. You can choose '**Obtain an IP address automatically**' (equal to DHCP, please refer to 'Cable Modem' section above), or '**Use the following IP address**' (i.e. static IP address).

WAN interface settings must be correctly set, or the Internet connection will fail even those settings of L2TP settings are correct. Please contact your Internet service provider if you don't know what you should fill in these fields.

L2TP settings section:

• **L2TP Settings**

User ID : 1

Password : 2

L2TP Gateway : 3

MTU : (512<=MTU Value<=1492) 4

Connection Type : 5

Idle Time Out : (1-1000 minutes) 6

User ID (1):	Please input user ID (user name) assigned by your Internet service provider here.
Password (2):	Please input the password assigned by your Internet service provider here.
L2TP Gateway (3):	Please input the IP address of L2TP gateway assigned by your Internet service provider here.
MTU (4):	Please input the MTU value of your network connection here. If you don't know, you can use default value.
Connection type (5):	<p>Please select the connection type of Internet connection you wish to use.</p> <p>4. Continuous: Keep Internet connection alive, do not disconnect.</p> <p>5. Connect on Demand: Only connects to Internet when there's a connect attempt</p> <p>6. Manual: Only connects to Internet when 'Connect' button on this page is pressed, and disconnects when 'Disconnect' button is pressed.</p>
Idle Time Out (6):	Please input idle time out.

	Specify the time to shutdown Internet connects after no internet activity is detected by minute. This option is only available when connection type is 'Connect on Demand'.
--	---

When all settings are finished, you'll see the following message displayed on your web browser:

Save setting successfully!

Please press APPLY button to restart the system for changes to take effect.

Please click '**Apply**' button to prepare to restart the router, and you'll see this message:

System Restarting! Please wait for a while !

Please wait for about 30 seconds, then click '**OK!**' button. You'll be back to router management interface again, and the router is ready with new settings.

2-5-6 Setup Procedures For 'Telstra Big Pond':

Telstra Big Pond (Australia Only)
If your Internet service is provided by Telstra Big Pond in Australia, you will need to enter your information below. This information is provided by Teistra BigPond.

User Name :	<input type="text"/>	1
Password :	<input type="password"/>	2
<input type="checkbox"/> User decide login server manually		3
Login Server :	<input type="text" value="0.0.0.0"/>	4

This setting only works when you're using Telstra big pond's network service in Australia.

User Name (1):	Please input the user name assigned by Telstra.
Password (2):	Please input the password assigned by Telstra.
User device login server manually (3):	Check this box to choose login server by yourself.
Login Server (4):	Please input the IP address of login server here.

When all settings are finished, you'll see the following message displayed on your web browser:

Save setting successfully!

Please press APPLY button to restart the system for changes to take effect.

Please click '**Apply**' button to prepare to restart the router, and you'll see this message:

System Restarting! Please wait for a while !

Please wait for about 30 seconds, then click '**OK!**' button. You'll be back to router management interface again, and the router is ready with new settings.

2-5-7 Setup Procedures For 'DNS':

If you select '**Dynamic IP**' or '**PPPoE**' as Internet connection method, at least one DNS server's IP address should be assigned automatically. However, if you have preferred DNS server, or your service provider didn't assign the IP address of DNS server because of any reason, you can input the IP address of DNS server here.

DNS ?

A Domain Name System (DNS) server is like an index of IP Addresses and Web Addresses. If you type a Web address into your browser, such as www.broadbandrouter.com, a DNS server will find that name in its index and find the matching IP address. Most ISPs provide a DNS server for speed and convenience. Since your Service Provider may connect you to the Internet through dynamic IP settings, it is likely that the DNS server IP Address is also provided dynamically. However, if there is a DNS server that you would rather use, you need to specify the IP Address of that DNS server. The primary DNS will be used for domain name access first, in case the primary DNS access failures, the secondary DNS will be used.

Has your Internet service provider given you a DNS address?

DNS address :	<input type="text" value="192.168.0.2"/>	1
Secondary DNS Address (optional) :	<input type="text"/>	2

DNS Address (1):	<i>Please input the IP address of DNS server provided by your service provider. (Only numeric characters and dots are accepted)</i>
Secondary DNS Address (2):	<i>Please input the IP address of another DNS server provided by your service provider, this is optional. (Only numeric characters and dots are accepted)</i>

When all settings are finished, you'll see the following message displayed on your web browser:

Save setting successfully!

Please press APPLY button to restart the system for changes to take effect.

Please click '**Apply**' button to prepare to restart the router, and you'll see this message:

System Restarting! Please wait for a while !

Please wait for about 30 seconds, then click '**OK!**' button. You'll be back to router management interface again, and the router is ready with new settings.

2-5-8 Setup Procedures For 'DDNS':

DDNS (Dynamic DNS) is an IP-to-Hostname mapping service for those Internet users who don't have a static (fixed) IP address. It will be a problem when such user wants to provide services to other users on Internet, because their IP address will vary every time when connected to Internet, and other user will not be able to know the IP address they're using at a certain time.

This router supports DDNS service of several service providers, for example:


DynDNS (<http://www.dyndns.org>)

TZO (<http://www.tzo.com>)

Please go to one of DDNS service provider's webpage listed above, and get a free DDNS account by the instructions given on their webpage.

DDNS

DDNS allows users to map the static domain name to a dynamic IP address. You must get a account, password and your static domain name from the DDNS service providers. Our products have DDNS support for www.dyndns.org and www.tzo.com now.

Dynamic DNS :	<input type="radio"/> Enabled <input checked="" type="radio"/> Disabled	1
Provider :	DynDNS 	2
Domain Name :	<input type="text"/>	3
Account / E-Mail :	<input type="text"/>	4
Password / Key :	<input type="text"/>	5

<i>Dynamic DNS (1):</i>	<i>If you want to enable DDNS function, please select 'Enabled'; otherwise please select 'Disabled'.</i>
<i>Provider (2):</i>	<i>Select your DDNS service provider here.</i>
<i>Domain Name (3):</i>	<i>Input the domain name you've obtained from DDNS service provider.</i>
<i>Account / E-Mail (4):</i>	<i>Input account or email of DDNS registration.</i>
<i>Password / Key (5):</i>	<i>Input DDNS service password or key.</i>

When all settings are finished, you'll see the following message displayed on your web browser:

Save setting successfully!

Please press APPLY button to restart the system for changes to take effect.

Please click 'Apply' button to prepare to restart the router, and you'll see this message:

System Restarting! Please wait for a while !

OK!

Please wait for about 30 seconds, then click 'OK!' button. You'll be back to router management interface again, and the router is ready with new settings.

2-6 Wired LAN Configurations

Before all computers using wired Ethernet connection (i.e. those computers connect to this router's LAN port 1 to 4 by Ethernet cable) can communicate with each other and access Internet, they must have a valid IP address.

There are two ways to assign IP addresses to computers: static IP address (set the IP address for every computer manually), and dynamic IP address (IP address of computers will be assigned by router automatically. It's recommended for most of computers to use dynamic IP address, it will save a lot of time on setting IP addresses for every computer, especially when there are a lot of computers in your network; for servers and network devices which will provide services to other computer and users that come from Internet, static IP address should be used, so other computers can locate the server.

Suggestions on IP address numbering plan:

If you have no idea on how to define an IP address plan for your network, here are some suggestions.

- 1. A valid IP address has 4 fields: a.b.c.d, for most of home and company users, it's suggested to use 192.168.c.d, where c is an integer between 0 and 254, and d is an integer between 1 and 254. This router is capable to work with up to 253 clients, so you can set 'd' field of IP address of router as 1 or 254 (or any number between 1 and 254), and pick a number between 0 and 254 for field 'c'.**
- 2. In most cases, you should use '255.255.255.0' as subnet mask, which allows up to 253 clients (this also meets router's capability of working with up to 253 clients).**
- 3. For all servers and network devices which will provide services to other people (like Internet service, print service, and file service), they should use static IP address. Give each of them a unique number between 1 and 253, and maintain a list, so everyone can locate those servers easily.**
- 4. For computers which are not dedicated to provide specific service to others, they should use dynamic IP address.**

If you don't really understand the descriptions listed above, don't worry! We will provide recommended setup values below.

Please follow the following instructions to set wired LAN parameters:

Please click 'LAN' menu on the left of web management interface, there are three setup groups here: 'LAN IP', 'DHCP Server', and 'Static DHCP Leases Table'. Here are setup instructions for each of them:

2-6-1 LAN IP Section:

• LAN IP		
IP address	<input type="text" value="192.168.2.1"/>	1
Subnet Mask	<input type="text" value="255.255.255.0"/>	2
802.1d Spanning Tree	<input type="button" value="Disabled"/>	3
DHCP Server	<input type="button" value="Enabled"/>	4

IP address (1):	Please input the IP address of this router.
Subnet Mask (2):	Please input subnet mask for this network.
802.1d Spanning Tree (3):	If you wish to activate 802.1d spanning tree function, select 'Enabled' for setup item '802.1d Spanning Tree', or set it to 'Disabled'
DHCP Server (4):	If you want to activate DHCP server function of this router, select 'Enabled', or set it to 'Disabled'.

Recommended Value if you don't know what to fill:

IP Address: 192.168.2.1 (Your next computer will be using 192.168.2.2.....)

Subnet Mask: 255.255.255.0

802.1d Spanning Tree: Disabled

DHCP Server: Enabled

2-6-2 DHCP Server:

• DHCP Server		
Lease Time	<input type="button" value="One week"/>	1
Start IP	<input type="text" value="192.168.2.240"/>	2
End IP	<input type="text" value="192.168.2.245"/>	3
Domain Name	<input type="text"/>	4

These settings are only available when 'DHCP Server' in 'LAN IP' section is 'Enabled', and here are descriptions of every setup items:

Lease Time (1):	Please choose a lease time (the duration that every computer can keep a specific IP address) of every IP address assigned by this router from dropdown menu.
Start IP (2):	Please input the start IP address of the IP range.
End IP (3):	Please input the end IP address of the IP range.
Domain Name (4):	If you wish, you can also optionally input the domain name for your network. This is optional.

Recommended Value if you don't know what to fill:

Lease Time: Two Weeks (or 'Forever', if you have less than 20 computers)

Start IP: 192.168.2.100

End IP: 192.168.2.200

Domain Name: (leave it blank)

NOTE:

1. The number of the last field (mentioned 'd' field) of 'End IP' must be greater than 'Start IP', and cannot the same with router's IP address.
2. The former three fields of IP address of 'Start IP', 'End IP', and 'IP Address of 'LAN IP' section (mentioned 'a', 'b', and 'c' field) should be the same.
3. These settings will affect wireless clients too.

2-6-3 Static DHCP Leases Table:

This function allows you to assign a static IP address to a specific computer forever, so you don't have to set the IP address for a computer, and still enjoy the benefit of using DHCP server. Maximum 16 static IP addresses can be assigned here. (If you set 'Lease Time' to 'forever' in 'DHCP Server' section, you can also assign an IP address to a specific computer permanently, however, you will not be able to assign a certain IP address to a specific computer, since IP addresses will be assigned in random order by this way).

1

Enable Static DHCP Leases 4

New 2 3

Enable Static DHCP Leases (1):	Check this box to enable this function, otherwise uncheck it to disable this function.
MAC Address (2):	Input the MAC address of the computer or network device (total 12 characters, with character from 0 to 9, and from a to f, like '001122aabbcc')
IP address (3):	Input the IP address you want to assign to this computer or network device
'Add' (4):	After you inputted MAC address and IP address pair, click this button to add the pair to static DHCP leases table.

After you clicked 'Add', the MAC address and IP address mapping will be added to 'Static DHCP Leases Table' section.

• **Static DHCP Leases Table**
It allows to entry 16 sets address only.

NO.	MAC address	IP address	Select
1	00:11:22:33:44:55	192.168.2.100	<input type="checkbox"/> 1

2 3 4

If you want to delete a specific item, please check the 'Select' box of a MAC address and IP address mapping (1), then click 'Delete Selected' button (2); if you want to delete all mappings, click 'Delete All' (3). If you want to deselect all mappings, click 'Reset' (4).

After you finish all settings, please click **'Apply'** button on the bottom of this page. After you click **'Apply'**, the following message will be displayed on your web browser:

Save setting successfully!

You may press CONTINUE button to continue configuring other settings or press APPLY button to restart the system for changes to take effect

Please wait for about 30 seconds, then click **'OK!'** button. You'll be back to router management interface again, and the router is ready with new settings.

2-7 Wireless LAN Configurations

If your computer, game console, or other network devices which is equipped with wireless network interface, you can use the wireless function of this router to let them connect to Internet and share resources with other computers with wired-LAN connection. You can also use the built-in security functions to protect your network from being intruded by intruders.

Please click **'Wireless'** menu on the left of web management interface, and the following message will be displayed on your web browser. You must enable wireless function of this router, or the wireless interface of this router will not function. Please select **'Enable'**, then click **'Apply'** button. If you're coming here because you want to disable wireless function, please select **'Disable'**, then click **'Apply'** button.

Wireless Settings

The gateway can be quickly configured as a wireless access point for roaming clients by setting the access identifier and channel number. It also supports data encryption and client filtering.

Enable or disable Wireless module function : Enable Disable

After you finish all settings, please click **'Apply'** button on the bottom of this page. After you click **'Apply'**, the following message will be displayed on your web browser:

Save setting successfully!

You may press CONTINUE button to continue configuring other settings or press APPLY button to restart the system for changes to take effect

Please wait for about 30 seconds, then click **'OK!'** button. You'll be back to router management interface again, and the router is ready with new settings.

2-7-1 Basic Wireless Settings

Please click **'Wireless'** menu on the left of web management interface, then click **'Basic Settings'**, and the following message will be displayed on your web browser:

Mode:	AP	1
Band:	2.4 GHz (B+G+N)	2
ESSID:	default	3
Channel Number:	1	4

This wireless router can be work in 6 modes:

- A. AP:** Standard wireless AP (access point).
- B. Station-Infrastructure:** Configure the router to Ethernet device such us TV, Game player, HDD&DVD to enable the Ethernet device be a wireless station.
- C. AP Bridge-Point to Point:** Connect this router with another wireless router, to expand the scope of network.
- D. AP Bridge-Point to Multi-Point:** Connect this router with up to four other wireless routers, to expand the scope of network.
- E. AP Bridge-WDS:** Connect this router with up to four WDS-capable wireless routers, to expand the scope of network.
- F. Universal Repeater:** The router can act as Station and AP at the same time. It can use Station function to connect to a Root AP and use AP function to service all wireless stations within its coverage.

NOTE: For **'AP Bridge-Point to Point'** and **'AP Bridge-Point to Multi-Point'** mode, wireless router is operated in wireless bridge dedicated mode – wireless router is only used to expand the scope of network, and no wireless clients will be accepted. If you want to use your wireless router to expand the scope of network, and also accept wireless clients, please select **'AP Bridge-WDS'** or **'Universal Repeater'** mode.

Please select a proper operation mode you want to use from 'Mode' dropdown menu, and continue on other operation mode specific settings:

- | | |
|---------------------------------------|--------------------------------|
| AP | - Please go to section 2-7-1-1 |
| Station-Infrastructure | - Please go to section 2-7-1-2 |
| AP Bridge-Point to Point | - Please go to section 2-7-1-3 |
| AP Bridge-Point to Multi-Point | - Please go to section 2-7-1-4 |
| AP Bridge-WDS | - Please go to section 2-7-1-5 |
| Universal Repeater | - Please go to section 2-7-1-6 |

2-7-1-1 Setup Procedures For 'AP':

Please select the radio band you want to use from 'Band' dropdown menu, and the following message will be displayed:

Mode:	AP	1
Band:	2.4 GHz (B+G+N)	2
ESSID:	default	3
Channel Number:	1	4
Associated Clients:	Show Active Clients	5

Band (2):	Please select the radio band from one of options
ESSID (3):	This is the name of wireless router. You can type any alphanumeric characters here, maximum 32 characters. ESSID is used to identify your own wireless router from others when there are other wireless routers in the same area. Default SSID is 'default', it's recommended to change default ESSID value to the one which is meaningful to you, like myhome, office_room1, etc.
Channel Number (4):	Please select a channel from the dropdown list of 'Channel Number', available channel numbers are 1 to 13 for European countries, 1 to 11 for USA. You can choose any channel number you want to use, and almost all wireless clients can locate the channel you're using automatically without any problem. However, it's still useful to remember the channel number you use, some wireless client supports manual channel number select, and this would help in certain scenario when there is some radio communication problem.
Associated Clients (5):	Click 'Show Active Clients' button, then an "Active Wireless Client Table" will pop up. You can see the status of all active wireless stations that are connecting to the access point.

2-7-1-2 Setup Procedures For 'Station-Infrastructure':

In this mode, you can connect the router to Ethernet device such as TV, Game player, HDD&DVD to enable the Ethernet device be a wireless station and join to a wireless network through an access point or AP router.

Mode:	Station-Infrastructure	1
Band:	2.4 GHz (B+G+N)	2
ESSID:	default	3
Site Survey:	Select Site Survey	4
WLAN MAC:	000000000000	Clone MAC 5

Band (2):	Select the band you want to use.
ESSID (3):	This is the name of wireless network. You can type the SSID of the network you would like to connect here.
Site Survey (4):	When you use this wireless router as a wireless station for Ethernet network device to have wireless capability, you have to associate it with a working access point. Click 'Select Site Survey' button, then a "Wireless Site Survey Table" will pop up. It will list all available access points near by. You can select one

	<i>access point in the table and it will join wireless LAN through this access point.</i>
WLAN MAC (5):	<i>For some applications, you may need to designate a specific MAC address for the router. Please enter the MAC address here. If you are connecting the router to a computer, you can simply press 'Clone Mac address' button to fill the MAC address field with the MAC address of your computer.</i>

2-7-1-3 Setup Procedures For 'AP Bridge-Point to Point':

In this mode, you can connect your wireless router with another, to combine two access points and expand the scope of wireless network, and all clients (wired only – AP will not accept wireless clients in this mode) of two wireless routers will think they're on the same physical network. This function is very convenient when you need to connect two networks between two buildings. **NOTE: Two wireless routers must use the same mode, band, channel number, and security setting**

Mode:	AP Bridge-Point to Point	1
Band:	2.4 GHz (B+G+N)	2
Channel Number:	1	3
MAC address 1 :	000000000000	4
Set Security :	Set Security	5

Band (2):	<i>Select the band you want to use, two wireless routers must use the same setting.</i>
Channel Number (3):	<i>Select the channel you want to use, two wireless routers must use the same setting.</i>
MAC address (4):	<i>Input the MAC address of another wireless router.</i>
Set Security (5):	<i>Click to set security settings for this connection.</i>

2-7-1-4 Setup Procedures For 'AP Bridge-Point to Multi-Point':

In this mode, you can connect your wireless router with at least four wireless routers to expand the scope of wireless network, and all clients (wired only – AP will not accept wireless clients in this mode) of the wireless routers will think they're on the same physical network.

Mode:	AP Bridge-Point to Multi-Point	1
Band:	2.4 GHz (B+G+N)	2
Channel Number:	1	3
MAC address 1 :	000000000000	4
MAC address 2 :	000000000000	5
MAC address 3 :	000000000000	6
MAC address 4 :	000000000000	7
Set Security :	Set Security	8

Band (2):	<i>Select the band you want to use, two wireless routers must use the same setting.</i>
Channel Number (3):	<i>Select the channel you want to use, two wireless routers must use the same setting.</i>

MAC address 1 to 4 (4 – 7):	Input the MAC address of another wireless router.
Set Security (8):	Click to set security settings for this connection.

2-7-1-5 Setup Procedures For 'AP Bridge – WDS'

In this mode, you can expand the scope of network by combining up to four other access points together, and every access point can still accept wireless clients. **NOTE: For WDS mode, the output signal nature is the same as that of normal AP mode.**

Mode:	AP Bridge-WDS	1
Band:	2.4 GHz (B+G+N)	2
ESSID:	default	3
Channel Number:	1	4
Associated Clients:	Show Active Clients	5
MAC address 1 :	000000000000	6
MAC address 2 :	000000000000	7
MAC address 3 :	000000000000	8
MAC address 4 :	000000000000	9
Set Security:	Set Security	10

Band (2):	Select the band you want to use, all the wireless routers must use the same setting.
ESSID (3):	Input the ESSID of your wireless router, the setting should be the same with other wireless routers for the convenience of roaming.
Channel Number (4):	Select the channel you want to use, all the wireless routers must use the same setting.
Associated Clients (5):	Click 'Show Active Clients' button, then an "Active Wireless Client Table" will pop up. You can see the status of all active wireless stations that are connecting to the access point.
MAC address 1 to 4 (6 - 9):	Input the MAC address of other wireless routers.
Set Security (10):	Click to set security settings for this connection

2-7-1-6 Setup Procedures For 'Universal Repeater'

In this mode, the router can act as a wireless repeater; it can be Station and AP at the same time. It can use Station function to connect to a Root AP and use AP function to service all wireless stations within its coverage. **NOTE: For Repeater Mode, this router will demodulate the received signal, checking if this signal is noise for the operating network then have the signal modulated and amplified again. The output power is the same as that of WDS and normal AP mode.**

Mode:	Universal Repeater	1
Band:	2.4 GHz (B+G+N)	2
ESSID:	default	3
Channel Number:	1	4
Associated Clients:	Show Active Clients	5
Root AP SSID:		6
Site Survey	Select Site Survey	7

Band (2):	Select the band you want to use, all the wireless routers must use the same setting.
ESSID (3):	This is the name of wireless router. You can type any alphanumerical characters here, maximum 32 characters. ESSID is used to identify your own wireless router from others when there are other wireless routers in the same area. Default SSID is 'default', it's recommended to change default ESSID value to the one which is meaningful to you, like myhome, office_room1, etc.
Channel Number (4):	Select the channel you want to use; all the wireless routers must use the same setting.
Associated Clients (5):	Click 'Show Active Clients' button, then an "Active Wireless Client Table" will pop up. You can see the status of all active wireless stations that are connecting to the access point.
Root AP SSID (6):	In 'Universal Repeater' mode, this device can act as a station to connect to a Root AP. You should assign the SSID of the Root AP here or click 'Select Site Survey' button to choose a Root AP.
Site Survey (7):	Click 'Select Site Survey' button, then a "Wireless Site Survey Table" will pop up. It will list all available access points near by. You can select one access point in the table and the router will join wireless LAN through this access point.

After you finish all settings, please click '**Apply**' button on the bottom of this page. After you click '**Apply**', the following message will be displayed on your web browser:

Save setting successfully!

You may press CONTINUE button to continue configuring other settings or press APPLY button to restart the system for changes to take effect

Please wait for about 30 seconds, then click '**OK!**' button. You'll be back to router management interface again, and the router is ready with new settings.

2-7-2 Advanced Wireless Settings

This router provides some advanced control of wireless parameters, if you want to configure these settings, please click **'Wireless'** menu on the left of web management interface, then click **'Advanced Settings'**, and the following message will be displayed on your web browser:

Fragment Threshold:	<input type="text" value="2346"/> (256-2346)	1
RTS Threshold:	<input type="text" value="2347"/> (0-2347)	2
Beacon Interval:	<input type="text" value="100"/> (20- 1024 ms)	3
DTIM Period:	<input type="text" value="3"/> (1-10)	4
Data Rate:	Auto <input type="button" value="v"/>	5
N Data Rate:	Auto <input type="button" value="v"/>	6
Channel Width:	<input checked="" type="radio"/> Auto 20/40 MHZ <input type="radio"/> 20 MHZ	7
Preamble Type:	<input checked="" type="radio"/> Short Preamble <input type="radio"/> Long Preamble	8
Broadcast Essid:	<input checked="" type="radio"/> Enable <input type="radio"/> Disable	9
CTS Protect:	<input type="radio"/> Auto <input type="radio"/> Always <input checked="" type="radio"/> None	10
Tx Power:	100 % <input type="button" value="v"/>	11
WMM:	<input type="radio"/> Enable <input checked="" type="radio"/> Disable	12

Fragment Threshold (1):	<i>Do not modify default value if you don't know what it is, default value is 2346.</i>
RTS Threshold (2):	<i>Do not modify default value if you don't know what it is, default value is 2347.</i>
Beacon Interval (3):	<i>Do not modify default value if you don't know what it is, default value is 100.</i>
DTIM Period (4):	<i>Do not modify default value if you don't know what it is, default value is 3.</i>
Data Rate (5):	<i>Do not modify default value if you don't know what it is</i>
N Data Rate (6):	<i>Same as above, but only for 802.11n clients.</i>
Channel Width (7):	<i>Do not modify default value if you don't know what it is, default setting is 'Auto 20/40 MHz'.</i>
Preamble Type (8):	<i>Do not modify default value if you don't know what it is, default setting is 'Short Preamble'.</i>
Broadcast ESSID (9):	<i>Decide if the wireless router will broadcast its own ESSID or not. You can hide the ESSID of your wireless router (set the option to 'Disable'), so only people those who know the ESSID of your wireless router can get connected.</i>
CTS Protect (10):	<i>Enabling this setting will reduce the chance of radio signal collisions between 802.11b and 802.11g/n wireless access points. It's recommended to set this option to 'Auto' or 'Always'. However, if you set to 'None', your wireless router should be able to work fine, too.</i>
Tx Power (11):	<i>You can set the output power of wireless radio. Unless you're using this wireless router in a really big space, you may not have to set output power to 100%. This will enhance security (malicious / unknown users in distance will not be able to reach your wireless router).</i>
WMM (12):	<i>The short of Wi-Fi MultiMedia, it will enhance the data transfer performance of multimedia contents when they're being transferred over wireless network. If you don't know what it is / not sure if you need it, it's safe to set this option to 'Enable', however, default value is 'Disable'.</i>

After you finish all settings, please click **'Apply'** button on the bottom of this page. After you click **'Apply'**, the following

message will be displayed on your web browser:

Save setting successfully!

You may press CONTINUE button to continue configuring other settings or press APPLY button to restart the system for changes to take effect

Continue

Apply

Please wait for about 30 seconds, then click '**OK!**' button. You'll be back to router management interface again, and the router is ready with new settings.

2-7-3 Wireless Security

It's very important to set wireless security settings properly! If you don't, hackers and malicious users can reach your network and valuable data without your consent and this will cause serious security problem.

To set wireless security settings, Please click 'Wireless' menu on the left of web management interface, then click 'Security Settings', then follow the following instructions to set wireless security settings:

2-7-3-1 Disable Wireless Security

When you select this mode, data encryption is disabled, and every wireless device in proximity will be able to connect your wireless router if no other security measure is enabled (like MAC address access control - see section 2-7-4, or disable ESSID broadcast).

Only use this option when you really want to allow everyone to use your wireless router, and you don't care if there's someone reads the data you transfer over network without your consent.

2-7-3-2 WEP - Wired Equivalent Privacy

When you select this mode, the wireless router will use WEP encryption, and the following setup menu will be shown on your web browser:

Encryption :	WEP	1
Key Length :	64-bit	2
Key Format :	Hex (10 characters)	3
Default Tx Key :	Key 1	4
Encryption Key 1 :	*****	5
Encryption Key 2 :	*****	6
Encryption Key 3 :	*****	7
Encryption Key 4 :	*****	8
<input type="checkbox"/> Enable 802.1x Authentication		9
<input type="button" value="Apply"/> <input type="button" value="Cancel"/>		

Key Length (2):	<i>There are two types of WEP key length: 64-bit and 128-bit. Using '128-bit' is safer than '64-bit', but will reduce some data transfer performance.</i>
Key Format (3):	<i>There are two types of key format: ASCII and Hex. When you select a key format, the number of characters of key will be displayed. For example, if you select '64-bit' as key length, and 'Hex' as key format, you'll see the message at the right of 'Key Format' is 'Hex (10 characters)', which means the length of WEP key is 10 characters.</i>
Default Tx Key (4):	<i>You can set up to four sets of WEP key, and you can decide which key is being used by default here. If you don't know which one you should use, select 'Key 1'.</i>
Encryption Key 1 to 4 (5-8):	<i>Input WEP key characters here, the number of characters must be the same as the number displayed at 'Key Format' field. You can use any alphanumerical characters (0-9, a-z, and A-Z) if you select 'ASCII' key format, and if you select 'Hex' as key format, you can use characters 0-9, a-f, and A-F. You must enter at least one encryption key here, and if you entered multiple WEP keys, they should not be same with each other.</i>
Enable 802.1x Authentication (9):	<i>IEEE 802.1x is an authentication protocol. Every user must use a valid account to login to this wireless router before accessing the wireless LAN. The authentication is processed by a RADIUS server. This mode only authenticates user by IEEE 802.1x, but it does not encryption the data during communication. If there is a RADIUS server in you environment, please enable this function. Check this box and another sub-menu will appear:</i>

<input checked="" type="checkbox"/> Enable 802.1x Authentication		
RADIUS Server IP address :		10
RADIUS Server Port :	1812	11
RADIUS Server Password :		12

RADIUS Server IP address (10):	<i>Please input the IP address of radius server here.</i>
RADIUS Server Port (11):	<i>Please input the port number of radius server here.</i>
RADIUS Server Password (12):	<i>Please input the port number of radius password here.</i>

TIPS: Some examples of WEP key

(Don't use those examples; use the one of your own!):

ASCII (5 characters): pilot, phone, 23561, 2Hyux, #@xml

ASCII (13 characters): digitalFAMILY, 82Jh26xHy3m&n

Hex (10 characters): 287d2aa732, 1152dabc85

Hex (26 characters): 9284bcda8427c9e036f7abcd84

To improve security level, do not use those words that can be found in a dictionary or too easy to remember! ('pilot' and 'phone' listed above are bad examples; just intended to show you how a WEP key look like). Wireless clients will remember the WEP key, so you only have to input the WEP key on wireless client once, and it's worth to use complicated WEP key to improve security level.

After you finish all settings, please click 'Apply' button on the bottom of this page. After you click 'Apply', the following message will be displayed on your web browser:

Save setting successfully!

You may press CONTINUE button to continue configuring other settings or press APPLY button to restart the system for changes to take effect

Please wait for about 30 seconds, then click 'OK!' button. You'll be back to router management interface again, and the router is ready with new settings.

2-7-3-3 Wi-Fi Protected Access (WPA):

When you select this mode, the wireless router will use WPA encryption, and the following setup menu will be shown on your web browser:

Encryption :	WPA pre-shared key	1
WPA Unicast Cipher Suite :	<input checked="" type="radio"/> WPA(TKIP) <input type="radio"/> WPA2(AES) <input type="radio"/> WPA2 Mixed	2
Pre-shared Key Format :	Passphrase	3
Pre-shared Key :	<input type="text"/>	4

<i>WPA Unicast Cipher Suite (2):</i>	<i>Please select a type of WPA cipher suite. Available options are: WPA (TKIP), WPA2 (AES), and WPA2 Mixed. You can select one of them, but you have to make sure your wireless client support the cipher you selected.</i>
<i>Pre-shared Key Format (3):</i>	<i>Select the type of pre-shared key, you can select Passphrase (8 or more alphanumerical characters, up to 63), or Hex (64 characters of 0-9, and a-f).</i>
<i>Pre-shared Key (4):</i>	<i>Please input the WPA passphrase here. It's not recommended to use a word that can be found in a dictionary due to security reason.</i>

After you finish all settings, please click 'Apply' button on the bottom of this page. After you click 'Apply', the following message will be displayed on your web browser:

Save setting successfully!

You may press CONTINUE button to continue configuring other settings or press APPLY button to restart the system for changes to take effect

Continue

Apply

Please wait for about 30 seconds, then click 'OK!' button. You'll be back to router management interface again, and the router is ready with new settings.

NOTE: Some wireless clients (especially those manufactured before year 2003) only support WEP or WPA (TKIP) cipher. A driver upgrade would be needed for those clients to use WPA and WPA2 encryption.

2-7-3-4 WPA RADIUS:

If you have a RADIUS server, this router can work with it and provide safer wireless authentication.

Encryption :	<input type="text" value="WPA RADIUS"/>	1
WPA Unicast Cipher Suite :	<input checked="" type="radio"/> WPA(TKIP) <input type="radio"/> WPA2(AES) <input type="radio"/> WPA2 Mixed	2
RADIUS Server IP address :	<input type="text"/>	3
RADIUS Server Port :	<input type="text" value="1812"/>	4
RADIUS Server Password :	<input type="text"/>	5

WPA Unicast Cipher Suite (2):	Please select a type of WPA cipher suite. Available options are: WPA (TKIP), WPA2 (AES), and WPA2 Mixed. You can select one of them, but you have to make sure your wireless client support the cipher you selected.
RADIUS Server IP address (3):	Please input the IP address of your Radius authentication server here.
RADIUS Server Port (4):	Please input the port number of your Radius authentication server here. Default setting is 1812.
RADIUS Server Password (5):	Please input the password of your Radius authentication server here.

After you finish all settings, please click 'Apply' button on the bottom of this page. After you click 'Apply', the following message will be displayed on your web browser:

Save setting successfully!

You may press CONTINUE button to continue configuring other settings or press APPLY button to restart the system for changes to take effect

Continue

Apply

Please wait for about 30 seconds, then click 'OK!' button. You'll be back to router management interface again, and the router is ready with new settings.

2-7-4 Wireless Access Control

This function will help you to prevent unauthorized users from connecting to your wireless router; only those wireless devices who have the MAC address you assigned here can gain access to your wireless router. You can use this function with other security measures described in previous section, to create a safer wireless environment.

Up to 20 MAC addresses can be assigned by using this function. Please click 'Wireless' menu on the left of web management interface, then click 'Access Control', and the following message will be displayed on your web browser:

MAC Address Filtering Table
It allows to entry 20 sets address only.

NO.	MAC address	Comment	Select
1	11:22:33:44:55:66	LAB Computer	<input type="checkbox"/>

Delete Selected Delete All Reset

5 Enable Wireless Access Control

New MAC address : Comment: Add Clear

Apply Cancel

All allowed MAC addresses will be displayed in 'MAC Address Filtering Table' (1). Here are descriptions of every setup items:

Delete Selected (2):	If you want to delete a specific MAC address entry, check the 'select' box of the MAC address you want to delete, then click 'Delete Selected' button. (You can select more than one MAC addresses).
Delete All (3):	If you want to delete all MAC addresses listed here, please click 'Delete All' button.
Reset (4):	You can also click 'Reset' button to unselect all MAC addresses.
Enable Wireless Access Control (5):	To enforce MAC address filtering, you have to check 'Enable Wireless Access Control'. When this item is unchecked, wireless router will not enforce MAC address filtering of wireless clients.
MAC Address (6):	Input the MAC address of your wireless devices here, dash (-) or colon (:) are not required. (i.e. If the MAC address label of your wireless device indicates 'aa-bb-cc-dd-ee-ff' or 'aa:bb:cc:dd:ee:ff', just input 'aabbccddeeff'.
Comment (7):	You can input any text here as the comment of this MAC address, like 'ROOM 2A Computer' or anything. You can input up to 16 alphanumerical characters here. This is optional and you can leave it blank, however, it's recommended to use this field to write a comment for every MAC addresses as a memory aid.
Add (8):	Click 'Add' button to add the MAC address and associated comment to the MAC address filtering table.
Clear (9):	Click 'Clear' to remove the value you inputted in MAC address and comment field.

After you finish all settings, please click '**Apply**' button on the bottom of this page. After you click '**Apply**', the following message will be displayed on your web browser:

Save setting successfully!

You may press CONTINUE button to continue configuring other settings or press APPLY button to restart the system for changes to take effect

Continue

Apply

Please wait for about 30 seconds, then click 'OK!' button. You'll be back to router management interface again, and the router is ready with new settings.

2-7-5 Wi-Fi Protected Setup (WPS)

Wi-Fi Protected Setup (WPS) is the simplest way to build connection between wireless network clients and this wireless router. You don't have to select encryption mode and input a long encryption passphrase every time when you need to setup a wireless client, you only have to press a button on wireless client and this wireless router, and the WPS will do the rest for you.

This wireless router supports two types of WPS: Push-Button Configuration (PBC), and PIN code. If you want to use PBC, you have to push a specific button on the wireless client to start WPS mode, and switch this wireless router to WPS mode too. You can push Reset/WPS button of this wireless router, or click 'Start PBC' button in the web configuration interface to do this; if you want to use PIN code, you have to know the PIN code of wireless client and switch it to WPS mode, then provide the PIN code of the wireless client you wish to connect to this wireless router. The detailed instructions are listed follow:

Please click 'Wireless' menu on the left of web management interface, then click 'WPS', and the following message will be displayed on your web browser:

Enable WPS 1

• Wi-Fi Protected Setup Information

WPS Status:	Configured
Self PinCode:	44896843
SSID	default
Authentication Mode	WPA pre-shared key
Passphrase Key	*****

2

• Device Configure

Config Mode:	Registrar <input type="button" value="v"/>	3
Configure via Push Button:	<input type="button" value="Start PBC"/>	4
Configure via Client PinCode:	<input type="text"/> <input type="button" value="Start PIN"/>	5

<i>Enable WPS (1):</i>	<i>Check this box to enable WPS function, uncheck it to disable WPS.</i>
<i>Wi-Fi Protected Setup Information (2):</i>	<p><i>WPS-related system information will be displayed here:</i></p> <p><i>WPS Status: If the wireless security (encryption) function of this wireless router is properly set, you'll see 'Configured' message here. If wireless security function has not been set, you'll see 'unConfigured'.</i></p> <p><i>Self PIN code: This is the WPS PIN code of this wireless router. This code is useful when you need to build wireless connection by WPS with other WPS-enabled wireless devices.</i></p> <p><i>SSID: The SSID of this wireless router will be displayed here.</i></p> <p><i>Authentication Mode: The wireless security authentication mode of this wireless router will be displayed here. If you don't enable security function of the wireless router before WPS is activated, the router will auto set the security to WPA (AES) and generate a set of passphrase key for WPS connection.</i></p> <p><i>Passphrase Key: The wireless security key of the router will be displayed here.</i></p>
<i>Config Mode (3):</i>	<i>There are 'Registrar' and 'Enrollee' modes for the WPS connection. When 'Registrar' is enabled, the wireless clients will follow the router's wireless settings for WPS connection. When 'Enrollee' mode is enabled, the router will follow the wireless settings of wireless client for WPS connection.</i>
<i>Configure via Push Button (4):</i>	<i>Click 'Start PBC' to start Push-Button style WPS setup procedure. This wireless router will wait for WPS requests from wireless clients for 2 minutes. The 'WLAN' LED on the wireless router will be steady on for 2 minutes when this wireless router is waiting for incoming WPS request.</i>
<i>Configure via client PinCode (5):</i>	<i>Please input the PIN code of the wireless client you wish to connect, and click 'Start PIN' button. The 'WLAN' LED on the wireless router will be steady on when this wireless router is waiting for incoming WPS request.</i>

2-7-6 Security Tips For Wireless Network

Here are some quick tips to help you improve the security level of your wireless network:

1. Never use simple words (like school, apple and computer) as WEP encryption or WPA passphrase.
2. A complicated (the combination of number, alphabet, even symbol, and long enough) WEP key and WPA passphrase is much safer than simple and short ones. Remember that the wireless client is capable to keep the key or passphrase for you, so you only have to input the complicated key or passphrase once. It's not too trouble but will greatly improve security level.

3. You can hide the ESSID of this router by set 'Broadcast ESSID' option to 'Disable'. Your wireless router will not be found by other people in proximity if they're just using the AP scanning function of their wireless client, and this can reduce the chance of being intruded.
4. Use 'Access Control' function described in section 2-7-4, so those people who are not in your list will not be able to connect to your network.

CHAPTER III: ADVANCED FUNCTIONS

3-1 Quality Of Service (QoS)

Quality of service provides an efficient way for computers on the network to share the internet bandwidth with a promised quality of internet service. Without QoS, all computers and devices on the network will compete with each other to get internet bandwidth, and some applications which require guaranteed bandwidth (like video streaming and network telephone) will be affected, therefore an unpleasing result will occur, like the interruption of video / audio transfer.

With this function, you can limit the maximum bandwidth or give a guaranteed bandwidth for a specific computer, to avoid said unpleasing result from happening.

3-1-1 Basic QoS Settings

Please click 'Qos' menu on the left of web management interface and the following message will be displayed on your web browser:

<i>Enable QoS (1):</i>	<i>Check this box to enable QoS function, unselect this box if you don't want to enforce QoS bandwidth limitations.</i>
<i>Total Download Bandwidth (2):</i>	<i>You can set the limit of total download bandwidth in kbits. To disable download bandwidth limitation, input '0' here.</i>
<i>Total Upload Bandwidth (3):</i>	<i>You can set the limit of total upload bandwidth in kbits. To disable upload bandwidth limitation, input '0' here.</i>
<i>Current QoS Table (4):</i>	<i>All existing QoS rules will be displayed here.</i>
<i>Add (5):</i>	<i>Click 'add' button to add a new QoS rule, see section 3-1-2 'Add a new QoS rule' below.</i>
<i>Edit (6):</i>	<i>If you want to modify the content of a specific rule, please check the 'select' box of the rule you want to edit, then click 'Edit' button. Only one rule should be selected a time! If you didn't select a rule before clicking 'Edit' button, you'll be prompted to add a new rule.</i>

Delete Selected (7):	You can delete selected rules by clicking this button. You can select one or more rules to delete by check the 'select' the box of the rule(s) you want to delete a time. If the QoS table is empty, this button will be grayed out and cannot be clicked.
Delete All (8):	By clicking this button, you can delete all rules currently in the QoS table. If the QoS table is empty, this button will be grayed out and cannot be clicked.
Move Up (9):	You can pull up the priority of the QoS rule you selected by clicking this button.
Move Down (10):	You can lower the priority of the QoS rule you selected by clicking this button.
Reset (11):	If you want to erase all values you just entered. Click 'Reset'.

After you finish all settings, please click '**Apply**' button on the bottom of this page. After you click '**Apply**', the following message will be displayed on your web browser:

Save setting successfully!

You may press CONTINUE button to continue configuring other settings or press APPLY button to restart the system for changes to take effect

Please wait for about 30 seconds, then click '**OK!**' button. You'll be back to router management interface again, and the router is ready with new settings.

3-1-2 Add A New QoS Rule

After you click 'Add' button in QoS menu, the following message will appear:

Rule Name :	<input style="width: 150px;" type="text"/>	1
Bandwidth :	Download ▼ <input style="width: 80px;" type="text"/> Kbps guarantee ▼	2
Local IP Address :	<input style="width: 100px;" type="text"/> - <input style="width: 100px;" type="text"/>	3
Local Port Range :	<input style="width: 200px;" type="text"/>	4
Remote IP Address :	<input style="width: 100px;" type="text"/> - <input style="width: 100px;" type="text"/>	5
Remote Port Range :	<input style="width: 200px;" type="text"/>	6
Traffic Type :	None ▼	7
Protocol :	TCP ▼	8
<input type="button" value="Save"/> <input type="button" value="Reset"/>		

Rule Name (1):	Please give a name to this QoS rule (up to 15 alphanumerical characters)
Bandwidth (2):	Set the bandwidth limitation of this QoS rule. You have to select the data direction of this rule (Upload or Download), and the speed of bandwidth limitation in Kbps, then select the type of QoS: 'guarantee' (guaranteed usable bandwidth for this rule) or 'max' (set the maximum bandwidth for the application allowed by this rule).
Local IP Address (3):	Specify the local (source) IP address that will be affected by this rule. Please input the starting IP address in the left field, and input the end IP address in the right field to define a range of IP

	<i>addresses, or just input the IP address in the left field to define a single IP address.</i>
<i>Local Port Range (4):</i>	<i>Please input the range of local (source) port number that will be affected by this rule. If you want to apply this rule on port 80 to 90, please input '80-90'; if you want to apply this rule on a single port, just input the port number, like '80'.</i>
<i>Remote IP Address: (5):</i>	<i>Specify the remote (destination) IP address that will be affected by this rule. Please input the starting IP address in the left field, and input the end IP address in the right field to define a range of IP addresses, or just input the IP address in the left field to define a single IP address.</i>
<i>Remote Port Range (6):</i>	<i>Please input the range of remote (destination) port number that will be affected by this rule. If you want to apply this rule on port 80 to 90, please input '80-90'; if you want to apply this rule on a single port, just input the port number, like '80'. If the remote (destination) IP address and /or port number is universal, just leave it blank.</i>
<i>Traffic Type (7):</i>	<i>Please select the traffic type of this rule, available options are None, SMTP, HTTP, POP3, and FTP. You can select a specific traffic type for this rule, if you want to make this rule as a IP address based rule (apply the limitation on all traffics from / to the specified IP address / port number), select 'None'.</i>
<i>Protocol (8):</i>	<i>Please select the protocol type of this rule, available options are TCP and UDP. If you don't know what protocol your application uses, please try 'TCP' first, and switch to 'UDP' if this rule doesn't seem to work.</i>

3-2 Network Address Translation (NAT)

Network address translations solve the problem if sharing a single IP address to multiple computers. Without NAT, all computers must be assigned with a valid Internet IP address to get connected to Internet, but Internet service providers only provide very few IP addresses to every user. Therefore it's necessary to use NAT technology to share a single Internet IP address to multiple computers on local network, so everyone can get connected to Internet.

3-2-1 Basic NAT Settings (Enable or disable NAT function)

Please click 'NAT' menu on the left of web management interface, and the following message will be displayed on your web browser:

NAT Settings

Network Address Translation (NAT) allows multiple users at your local site to access the Internet through a single Public IP Address or multiple Public IP Addresses. NAT provides Firewall protection from hacker attacks and has the flexibility to allow you to map Private IP Addresses to Public IP Addresses for key services such as the Web or FTP.

Enable or disable NAT module function : Enable Disable

To enable NAT function, please select 'Enable' for 'Enable NAT module function'; to disable, please select 'Disable'. After you finish all settings, please click '**Apply**' button on the bottom of this page. After you click '**Apply**', the following message will be displayed on your web browser:

Save setting successfully!

You may press CONTINUE button to continue configuring other settings or press APPLY button to restart the system for changes to take effect

Please wait for about 30 seconds, then click '**OK!**' button. You'll be back to router management interface again, and the router is ready with new settings.

3-2-2 Port Forwarding

This function allows you to redirect a single port or consecutive ports of Internet IP address to the same port of the IP address on local network. The port number(s) of Internet IP address and private IP address (the IP address on local network) must be the same. If the port number of Internet IP address and private IP address is different, please use 'Virtual Server' function, described in next section.

Please click 'NAT' menu on the left of web management interface, then click 'Port Forwarding', and the following message will be displayed on your web browser:

Enable Port Forwarding

Private IP	Computer name	Type	Port Range	Comment
0.0.0.0 2	<< -----Select----- >> 3	Both 4	- 5	6
<input type="button" value="Add"/> 7	<input type="button" value="Reset"/> 8			

Current Port Forwarding Table

NO.	Computer name	Private IP	Type	Port Range	Comment	Select

<i>Enable Port Forwarding (1):</i>	<i>Check this box to enable port mapping, and uncheck this box to disable port mapping.</i>
<i>Private IP (2):</i>	<i>Input the IP address of the computer on local network which provides internet service.</i>
<i>Computer Name (3):</i>	<i>Pull down the menu and all the computers connected to the router will be listed here. You can easily to select the computer name without checking the IP address of the computer.</i>
<i>Type (4):</i>	<i>Select the type of connection, TCP or UDP. If you're not sure, please select 'Both'.</i>
<i>Port Range (5):</i>	<i>Input the starting port number in the left field, and input the ending port number in the right field. If you only want to redirect a single port number, just fill the port number in the left field.</i>
<i>Comment (6):</i>	<i>Please input any text to describe this mapping, up to 16 alphanumerical characters.</i>
<i>Add (7):</i>	<i>Add the mapping to port forwarding table.</i>
<i>Reset (8):</i>	<i>Remove all inputted values.</i>

<i>Port Forwarding Table (9):</i>	<i>All existing port forwarding mappings will be displayed here.</i>
<i>Delete Selected (10):</i>	<i>Please select a port forwarding mapping by clicking the 'Select' box of the mapping, then click 'Delete Selected' button to remove the mapping. If there's no existing mapping, this button will be grayed out.</i>
<i>Delete All (11):</i>	<i>Delete all mappings existed in virtual server table.</i>
<i>Reset (12):</i>	<i>Unselect all mappings.</i>

After you finish all settings, please click **'Apply'** button on the bottom of this page. After you click **'Apply'**, the following message will be displayed on your web browser:

Save setting successfully!

You may press CONTINUE button to continue configuring other settings or press APPLY button to restart the system for changes to take effect

Please wait for about 30 seconds, then click **'OK!'** button. You'll be back to router management interface again, and the router is ready with new settings.

3-2-3 Virtual Server

This function allows you to redirect a port on Internet IP address (on WAN port) to a specified port of an IP address on local network, so you can setup an Internet service on the computer on local network, without exposing it on Internet directly. You can also build many sets of port redirection, to provide many different Internet services on different local computers via a single Internet IP address.

Please click 'NAT' menu on the left of web management interface, then click 'Virtual Server', and the following message will be displayed on your web browser:

Enable Virtual Server

Private IP	Computer name	Private Port	Type	Public Port	Comment
<input type="text" value=""/>	<input type="text" value="Select"/>	<input type="text" value=""/>	<input type="text" value="Both"/>	<input type="text" value=""/>	<input type="text" value=""/>

Current Virtual Server Table

NO.	Computer name	Private IP	Private Port	Type	Public Port	Comment	Select

<i>Enable Virtual Server (1):</i>	<i>Check this box to enable virtual server, and uncheck this box to disable virtual server.</i>
<i>Private IP (2):</i>	<i>Input the IP address of the computer which provides Internet service.</i>
<i>Computer Name (3):</i>	<i>Pull down the menu and all the computers connected to the router will be listed here. You can easily to select the computer name without checking the IP address of the computer.</i>
<i>Private Port (4):</i>	<i>Input the port number of the IP address which provides Internet service.</i>

Type (5):	Select the type of connection, TCP or UDP. If you're not sure, please select 'Both'.
Public Port (6):	Please select the port number of Internet IP address which will be redirected to the port number of local IP address defined above.
Comment (7):	Please input any text to describe this mapping, up to 16 alphanumerical characters.
Add (8):	Add the mapping to virtual server table.
Reset (9):	Remove all inputted values.
Virtual Server Table (10):	All existing virtual server mappings will be displayed here.
Delete Selected (11):	Please select a virtual server mapping by clicking the 'Select' box of the mapping, then click 'Delete Selected' button to remove the mapping. If there's no existing mapping, this button will be grayed out.
Delete All (12):	Delete all mappings existed in virtual server table.
Reset (13):	Unselect all mappings.

After you finish all settings, please click **'Apply'** button on the bottom of this page. After you click **'Apply'**, the following message will be displayed on your web browser:

Save setting successfully!

You may press CONTINUE button to continue configuring other settings or press APPLY button to restart the system for changes to take effect

Please wait for about 30 seconds, then click **'OK!'** button. You'll be back to router management interface again, and the router is ready with new settings.

3-2-4 Port Mapping For Special Applications

Some applications require more than one connection a time; these applications won't work with simple NAT rules. In order to make these applications work, you can use this function to let these applications work.

Enable 1

IP Address	Computer name	TCP Port to Open	UDP Port to Open	Comment
0.0.0.0 2	<< -----Select----- >> 3	<input type="text"/>	<input type="text"/>	<input type="text"/>
Popular Applications		Select Game	<input type="button" value="Add"/> 7	

8 9

Current Trigger-Port Table

NO.	Computer name	IP Address	TCP Port to Open	UDP Port to Open	Comment	Select
<input type="button" value="Delete Selected"/> <input type="button" value="Delete All"/> <input type="button" value="Reset"/>						

11 10

12 13

Enable (1):	Check this box to enable special applications and uncheck this box to disable virtual server.
Private IP (2):	Input the IP address of the computer which you want to open the ports.
Computer Name (3):	Pull down the menu and all the computers connected to the router will be listed here. You can easily to select the computer name without checking the IP address of the computer.

<i>TCP Port to Open (4):</i>	<i>This is the out going (Outbound) range of TCP port numbers for this particular application.</i>
<i>UDP Port to Open (5):</i>	<i>This is the out going (Outbound) range of UDP port numbers for this particular application.</i>
<i>Comment (6):</i>	<i>The description of this setting.</i>
<i>Popula Applications (7):</i>	<i>This section lists the more popular applications that require multiple connections. Select an application from the Popular Applications selection and click 'Add' to save the setting to 'Current Trigger-Port Table.'</i>
<i>Add (8):</i>	<i>Add the setting to the 'Current Trigger-Port Table.'</i>
<i>Reset (9):</i>	<i>Click 'Reset' will clear all above setting and you can set up again.</i>
<i>Current Trigger-Port Table (10):</i>	<i>All the settings for the special applications will be listed here. If you want to remove some Special Application settings from the " Current Trigger-Port Table", select the Special Application settings you want to remove in the table and then click "Delete Selected". If you want remove all Special Appliacation settings from the table, just click "Delete All" button. Click "Reset" will clear your current selections.</i>
<i>Delete Selected (11):</i>	<i>Please select a special application by clicking the 'Select' box of the mapping, then click 'Delete Selected' button to remove the mapping. If there's no settings existed, this button will be grayed out.</i>
<i>Delete All (12):</i>	<i>Delete all settings existed in trigger port table.</i>
<i>Reset (13):</i>	<i>Unselect all settings.</i>

Note: Only one LAN client can use a particular special application at a time.

After you finish all settings, please click **'Apply'** button on the bottom of this page. After you click **'Apply'**, the following message will be displayed on your web browser:

Save setting successfully!

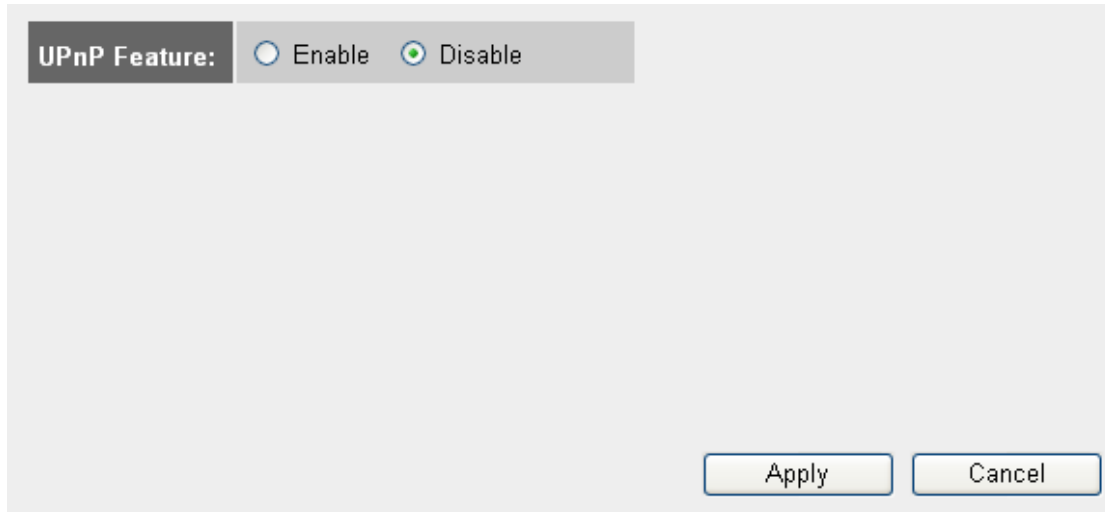
You may press CONTINUE button to continue configuring other settings or press APPLY button to restart the system for changes to take effect

Please wait for about 30 seconds, then click **'OK!'** button. You'll be back to router management interface again, and the router is ready with new settings.

3-2-5 UPnP Setting

This function enables network auto-configuration for peer-to-peer communications, with this function, network devices will be able to communicate with other devices directly, and learn about information about other devices. Many network device and applications rely on UPnP function nowadays.

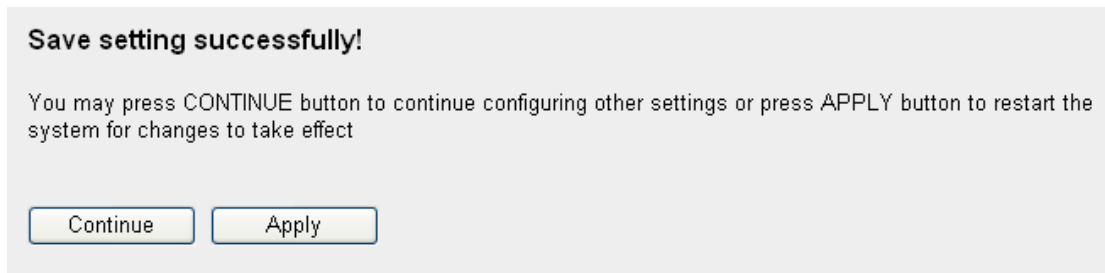
Please click 'NAT' menu on the left of web management interface, then click 'UPnP', and the following message will be displayed on your web browser:



UPnP Feature: Enable Disable

Apply Cancel

After you finish all settings, please click '**Apply**' button on the bottom of this page. After you click '**Apply**', the following message will be displayed on your web browser:



Save setting successfully!

You may press CONTINUE button to continue configuring other settings or press APPLY button to restart the system for changes to take effect

Continue Apply

Please wait for about 30 seconds, then click '**OK!**' button. You'll be back to router management interface again, and the router is ready with new settings.

3-2-6 ALG Settings

Application Layer Gateway (ALG) is a special function of this router. It includes many preset routing rules for numerous applications which require special support. With these supports, those applications which required special support will be able to work with NAT architecture.

Please click 'NAT' menu on the left of web management interface, then click 'ALG Settings', and the following message will be displayed on your web browser:

Enable	Name	Comment
<input checked="" type="checkbox"/>	Amanda	Support for Amanda backup tool protocol.
<input checked="" type="checkbox"/>	Egg	Support for eggdrop bot networks.
<input checked="" type="checkbox"/>	FTP	Support for FTP.
<input checked="" type="checkbox"/>	H323	Support for H323/netmeeting.
<input checked="" type="checkbox"/>	IRC	Allows DCC to work though NAT and connection tracking.
<input checked="" type="checkbox"/>	MMS	Support for Microsoft Streaming Media Services protocol.
<input checked="" type="checkbox"/>	Quake3	Support for Quake III Arena connection tracking and nat.
<input checked="" type="checkbox"/>	Talk	Allows netfilter to track talk connections.
<input checked="" type="checkbox"/>	TFTP	Support for TFTP.
<input checked="" type="checkbox"/>	IPsec	Support for IPsec passthrough
<input type="checkbox"/>	Starcraft	Support for Starcraft/Battle.net game protocol.
<input type="checkbox"/>	MSN	Support for MSN file tranfer.

After you finish all settings, please click '**Apply**' button on the bottom of this page. After you click '**Apply**', the following message will be displayed on your web browser:

Save setting successfully!

You may press CONTINUE button to continue configuring other settings or press APPLY button to restart the system for changes to take effect

Please wait for about 30 seconds, then click '**OK!**' button. You'll be back to router management interface again, and the router is ready with new settings.

3-3 Firewall

Excepting NAT, this router also provides firewall function to block malicious intruders from accessing your computers on local network. These functions include inbound attack prevention, and block outbound traffics, like block URLs which have pre-defined keywords.

Please click 'Firewall' menu on the left of web management interface, and the following message will be displayed on your web browser:

Security Settings (Firewall)

The Broadband router provides extensive firewall protection by restricting connection parameters, thus limiting the risk of hacker attack, and defending against a wide array of common attacks. However, for applications that require unrestricted access to the Internet, you can configure a specific client/server as a Demilitarized Zone (DMZ).

Enable or disable Firewall module function Enable Disable

After you finish all settings, please click '**Apply**' button on the bottom of this page. After you click '**Apply**', the following message will be displayed on your web browser:

Save setting successfully!

You may press CONTINUE button to continue configuring other settings or press APPLY button to restart the system for changes to take effect

Please wait for about 30 seconds, then click '**OK!**' button. You'll be back to router management interface again, and the router is ready with new settings.

3-3-1 Access Control

This function allows or denies computers with specific MAC address from connecting to the network; it can also allow or deny computers with specific IP address, protocol, or port.

Please click 'Firewall' menu on the left of web management interface, then click 'Access Control', and the following message will be displayed on your web browser:

<i>Enable MAC Filtering (1):</i>	<i>Check this box to enable MAC address based filtering, and please select 'Deny' or 'Allow' to decide the behavior of MAC filtering table. If you select deny, all MAC addresses listed in filtering table will be denied from connecting to the network; if you select allow, only MAC addresses listed in filtering table will be able to connect to the network, and rejecting all other network devices.</i>
<i>Client PC MAC address (2):</i>	<i>Please input the MAC address of computer or network device here, dash (-) or colon (:) are not required. (i.e. If the MAC address label of your wireless device indicates 'aa-bb-cc-dd-ee-ff' or 'aa:bb:cc:dd:ee:ff', just input 'aabbccddeeff')</i>
<i>Computer Name (3):</i>	<i>Pull down the menu and all the computers connected to the router will be listed here. You can easily to select the computer name without checking the IP address of the computer.</i>
<i>Comment (4):</i>	<i>You can input any text here as the comment of this MAC address, like 'ROOM 2A Computer' or anything. You can input up to 16 alphanumerical characters here. This is optional and you can leave it blank, however, it's recommended to use this field to write a comment for every MAC addresses as a memory aid.</i>
<i>Add (5):</i>	<i>Click 'Add' button to add the MAC address and associated comment to the MAC address filtering table.</i>
<i>Reset (6):</i>	<i>Remove all inputted values.</i>
<i>MAC Filtering Table (7):</i>	<i>All existing MAC addresses in filtering table will be listed here.</i>
<i>Delete Selected (8):</i>	<i>If you want to delete a specific MAC address entry, check the 'select' box of the MAC address you want to delete, then click 'Delete Selected' button. (You can select more than one MAC addresses).</i>

<i>Delete All (9):</i>	<i>If you want to delete all MAC addresses listed here, please click 'Delete All' button.</i>
<i>Reset (10):</i>	<i>You can also click 'Reset' button to unselect all MAC addresses.</i>
<i>Enable IP Filtering Table (11):</i>	<i>Check this box to enable IP address based filtering, and please select 'Deny' or 'Allow' to decide the behavior of IP filtering table. If you select deny, all IP addresses listed in filtering table will be denied from connecting to the network; if you select allow, only IP addresses listed in filtering table will be able to connect to the network, and rejecting all other network devices.</i>
<i>IP Filtering Table (12):</i>	<i>All existing IP addresses in filtering table will be listed here.</i>
<i>Add PC (13):</i>	<i>Click this button to add a new IP address to IP filtering table, up to 20 IP addresses can be added. Please refer to section 3-3-1-1 'Add PC' below.</i>
<i>Delete Selected (14):</i>	<i>If you want to delete a specific IP address entry, check the 'select' box of the IP address you want to delete, then click 'Delete Selected' button. (You can select more than one IP addresses).</i>
<i>Delete All (15):</i>	<i>If you want to delete all IP addresses listed here, please click 'Delete All' button.</i>

After you finish all settings, please click **'Apply'** button on the bottom of this page. After you click **'Apply'**, the following message will be displayed on your web browser:

Save setting successfully!

You may press CONTINUE button to continue configuring other settings or press APPLY button to restart the system for changes to take effect

Please wait for about 30 seconds, then click **'OK!'** button. You'll be back to router management interface again, and the router is ready with new settings.

3-3-1-1 Add PC

Client PC Description :	<input type="text"/>	1
Client PC IP address :	<input type="text"/> - <input type="text"/>	2

Client PC Service :		
Service Name	Detail Description	Select
WWW	HTTP, TCP Port 80, 3128, 8000, 8080, 8081	<input type="checkbox"/>
E-mail Sending	SMTP, TCP Port 25	<input type="checkbox"/>
News Forums	NNTP, TCP Port 119	<input type="checkbox"/>
E-mail Receiving	POP3, TCP Port 110	<input type="checkbox"/>
Secure HTTP	HTTPS, TCP Port 443	<input type="checkbox"/>
File Transfer	FTP, TCP Port 21	<input type="checkbox"/>
MSN Messenger	TCP Port 1863	<input type="checkbox"/>
Telnet Service	TCP Port 23	<input type="checkbox"/>
AIM	AOL Instant Messenger, TCP Port 5190	<input type="checkbox"/>
NetMeeting	H.323, TCP Port 389,522,1503,1720,1731	<input type="checkbox"/>
DNS	UDP Port 53	<input type="checkbox"/>
SNMP	UDP Port 161, 162	<input type="checkbox"/>
VPN-PPTP	TCP Port 1723	<input type="checkbox"/>
VPN-L2TP	UDP Port 1701	<input type="checkbox"/>
TCP	All TCP Port	<input type="checkbox"/>
UDP	All UDP Port	<input type="checkbox"/>

User Define Service	
Protocol:	<input type="text" value="Both"/> 4
Port Range:	<input type="text"/> 5
<input type="button" value="Add"/> 6 <input type="button" value="Reset"/>	

3

Client PC Description (1):	<i>Please input any text to describe this IP address, up to 16 alphanumeric characters.</i>
Client PC IP address (2):	<i>Please input the starting IP address in the left field, and input the end IP address in the right field to define a range of IP addresses, or just input the IP address in the left field to define a single IP address.</i>
Client PC Service (3):	<i>Please check all services you want to allow or deny this IP address to use, you can check multiple services.</i>
Protocol (4):	<i>If the service you need is not listed above, you can create a new service on your own. Please select TCP or UDP, if you're not sure, please select 'Both'.</i>
Port Range (5):	<i>Please input the port range of new service here. If you want to specify port 80 to 90, please input '80-90'; if you want to apply this rule on a single port, just input the port number, like '80'.</i>
Add (6):	<i>When you finish with all settings, please click 'Add' to save settings, you'll be brought back to previous menu, and the rule you just set will appear in current IP filtering table.</i>

3-3-2 URL Blocking

If you want to prevent computers in local network from accessing certain website (like pornography, violence, or anything you want to block), you can use this function to stop computers in local network from accessing the site you defined here.

This function is useful for parents and company managers.

Please click 'Firewall' menu on the left of web management interface, then click 'URL Blocking', and the following message will be displayed on your web browser:

Enable URL Blocking 1

URL/Keyword 2

Add 3 Reset 4

Current URL Blocking Table

NO.	URL/Keyword	Select
1	www.playboy.com	<input type="checkbox"/> 5

Delete Selected 6 Delete All 7 Reset 8

Apply Cancel

<i>Enable URL Blocking (1):</i>	<i>Check this box to enforce URL Blocking, uncheck it to disable URL Blocking.</i>
<i>URL/Keyword (2):</i>	<i>Input the URL (host name or IP address of website, like http://www.blocked-site.com or http://11.22.33.44), or the keyword which is contained in URL (like pornography, cartoon, stock, or anything).</i>
<i>Add (3):</i>	<i>Click 'Add' button to add the URL / keyword to the URL / Keyword filtering table.</i>
<i>Reset (4):</i>	<i>Click 'Reset' to remove the value you inputted in URL/Keyword field.</i>
<i>Current URL Blocking Table (5):</i>	<i>All existing URL/Keywords in filtering table will be listed here.</i>
<i>Delete Selected (6):</i>	<i>If you want to delete a specific URL/Keyword entry, check the 'select' box of the MAC address you want to delete, then click 'Delete Selected' button. (You can select more than one MAC addresses).</i>
<i>Delete All (7):</i>	<i>If you want to delete all URL/Keyword listed here, please click 'Delete All' button.</i>
<i>Reset (8):</i>	<i>You can also click 'Reset' button to unselect all URL/Keywords.</i>

After you finish all settings, please click '**Apply**' button on the bottom of this page. After you click '**Apply**', the following message will be displayed on your web browser:

Save setting successfully!

You may press CONTINUE button to continue configuring other settings or press APPLY button to restart the system for changes to take effect

Continue Apply

Please wait for about 30 seconds, then click '**OK!**' button. You'll be back to router management interface again, and the router is ready with new settings.

3-3-3 DoS Attack Prevention

Denial of Service (DoS) is a common attack measure, by transmitting a great amount of data or request to your Internet IP address and server, the Internet connection will become very slow, and server may stop responding because it is not capable to handle too much traffics.

This router has a built-in DoS attack prevention mechanism; when you activate it, the router will stop the DoS attack for you. Please click 'Firewall' menu on the left of web management interface, then click 'DoS', and the following message will be displayed on your web browser:

Denial of Service Feature

Ping of Death	<input type="checkbox"/>	1
Discard Ping From WAN	<input type="checkbox"/>	2
Port Scan	<input type="checkbox"/>	3
Sync Flood	<input type="checkbox"/>	4

5

<i>Ping of Death (1):</i>	<i>Ping of Death is a special packet, and it will cause certain computer to stop responding. Check this box and the router will filter this kind of packet out.</i>
<i>Discard Ping From WAN (2):</i>	<i>Ping is a common and useful tool to know the connection status of a specified remote network device, but some malicious intruder will try to fill your network bandwidth with a lot of PING request data packet, to make your internet connection become very slow, even unusable. Check this box and the router will ignore all inbound PING request, but when you activate this function, you will not be able to ping your own router from internet, too.</i>
<i>Port Scan (3):</i>	<i>Some malicious intruder will try to use a 'port scanner' to know how many ports of your Internet IP address are open, and they can collect a lot of valuable information by doing so. Check this box and the router will block all traffics which are trying to scan your Internet IP address.</i>
<i>Sync Flood (4):</i>	<i>This is another kind of attack, which uses a lot of fake connection request to consume the memory of your server, and try to make your server become unusable. Check this box and the router will filter this kind of traffic out.</i>
<i>Advanced Settings (5):</i>	<i>Click this button and you can set advanced settings of the DoS prevention method listed above, please see section 3-3-3-1 'DoS – Advanced Settings' below.</i>

After you finish all settings, please click '**Apply**' button on the bottom of this page. After you click '**Apply**', the following message will be displayed on your web browser:

Save setting successfully!

You may press CONTINUE button to continue configuring other settings or press APPLY button to restart the system for changes to take effect

Continue

Apply

Please wait for about 30 seconds, then click 'OK!' button. You'll be back to router management interface again, and the router is ready with new settings.

3-3-3-1 DoS - Advanced Settings

When you click 'Advanced' button in DoS menu, the following message will be displayed on your web browser:

Denial of Service Feature

<input type="checkbox"/> Ping of Death	5 Packet(S) Per Second Burst 5	1
<input type="checkbox"/> Discard Ping From WAN		2
<input type="checkbox"/> Port Scan	<input checked="" type="checkbox"/> NMAP FIN / URG / PSH <input checked="" type="checkbox"/> Xmas tree <input checked="" type="checkbox"/> Another Xmas tree <input checked="" type="checkbox"/> Null scan <input checked="" type="checkbox"/> SYN / RST <input checked="" type="checkbox"/> SYN / FIN <input checked="" type="checkbox"/> SYN (only unreachable port)	3
<input type="checkbox"/> Sync Flood	5 Packet(S) Per Second Burst 5	4

Apply Cancel

<i>Ping of Death (1):</i>	<i>Ping of Death is a special packet, and it will cause certain computer to stop responding. Check this box and the router will filter this kind of packet out.</i>
<i>Discard Ping From WAN (2):</i>	<i>Ping is a common and useful tool to know the connection status of a specified remote network device, but some malicious intruder will try to fill your network bandwidth with a lot of PING request data packet, to make your internet connection become very slow, even unusable. Check this box and the router will ignore all inbound PING request, but when you activate this function, you will not be able to ping your own router from internet, too.</i>
<i>Port Scan (3):</i>	<i>Some malicious intruder will try to use a 'port scanner' to know how many ports of your Internet IP address are open, and they can collect a lot of valuable information by doing so. Check this box and the router will block all traffics which are trying to scan your Internet IP address.</i>
<i>Sync Flood (4):</i>	<i>This is another kind of attack, which uses a lot of fake connection request to consume the memory of your server, and try to make your server become unusable. Check this box and the router will filter this kind of traffic out.</i>

After you finish all settings, please click 'Apply' button on the bottom of this page. After you click 'Apply', the following message will be displayed on your web browser:

Save setting successfully!

You may press CONTINUE button to continue configuring other settings or press APPLY button to restart the system for changes to take effect

Please wait for about 30 seconds, then click 'OK!' button. You'll be back to router management interface again, and the router is ready with new settings.

3-3-4 Demilitarized Zone (DMZ)

Demilitarized Zone (DMZ) refers to a special area in your local network. This area resides in local network, and all computers in this area uses private IP address, too. But these private IP addresses are mapped to a certain Internet IP address, so other people on Internet can fully access those computers in DMZ.

Please click 'Firewall' menu on the left of web management interface, then click 'DMZ', and the following message will be displayed on your web browser:

The screenshot shows the DMZ configuration page. At the top, there is a checkbox labeled 'Enable DMZ' with a '1' next to it. Below this is a table with three columns: 'Public IP address', 'Client PC IP address', and 'Computer name'. Under 'Public IP address', there are radio buttons for 'Dynamic IP' (selected) and 'Static IP'. The 'Dynamic IP' section has a dropdown menu showing 'Session 1' with a '2' next to it. The 'Client PC IP address' field has a '3' next to it. The 'Computer name' field has a dropdown menu with '-----Select-----' and a '4' next to it. Below the table are 'Add' (5) and 'Reset' (6) buttons. Below that is the 'Current DMZ Table' (7) with columns: 'NO.', 'Computer name', 'Public IP address', 'Client PC IP address', and 'Select'. Below the table are 'Delete Selected' (8), 'Delete All' (9), and 'Reset' (10) buttons. At the bottom right are 'Apply' and 'Cancel' buttons.

Enable DMZ (1):	Check this box to enable DMZ function, uncheck this box to disable DMZ function.
Public IP address (2):	You can select 'Dynamic IP' or 'Static IP' here. If you select 'Dynamic IP', you have to select an Internet connection session from dropdown menu; if you select 'Static IP', please input the IP address that you want to map to a specific private IP address.
Client PC IP address (3):	Please input the private IP address that the Internet IP address will be mapped to.
Computer Name (4):	Pull down the menu and all the computers connected to the router will be listed here. You can easily to select the computer name without checking the IP address of the computer.
Add (5):	Click 'Add' button to add the public IP address and associated private IP address to the DMZ table.
Reset (6):	Click 'Clear' to remove the value you inputted in Public IP address and Client PC IP address field.
Current DMZ table (7):	All existing public IP address and private IP address mapping will be displayed here.
Delete Selected (8):	If you want to delete a specific DMZ entry, check the 'select' box of the DMZ entry you want to delete, then click 'Delete Selected' button. (You can select more than one DMZ entries).
Delete All (9):	If you want to delete all DMZ entries listed here, please click 'Delete All' button.

Reset (10):

You can also click 'Reset' button to unselect all DMZ entries.

After you finish all settings, please click '**Apply**' button on the bottom of this page. After you click '**Apply**', the following message will be displayed on your web browser:

Save setting successfully!

You may press CONTINUE button to continue configuring other settings or press APPLY button to restart the system for changes to take effect

Continue

Apply

Please wait for about 30 seconds, then click '**OK!**' button. You'll be back to router management interface again, and the router is ready with new settings.

3-4 System Status

The functions described here will provide you with system related information. To enter system status menu, please either click 'Status' link located at the upper-right corner of web management interface, or click 'Status' button in main menu.

3-4-1 System Information And Firmware Version

You can use this function to know the system information and firmware version of this router.

Please click 'Status' link located at the upper-right corner of web management interface, and the following message will be displayed on your web browser

Status and Information ?

You can use the Status page to monitor the connection status for the Broadband router's; WAN/LAN interfaces, firmware and hardware version numbers, any illegal attempts to access your network, and information on all DHCP client PCs currently connected to your network.

System

Model	Wireless Router
Up time	0day:0h:36m:29s
Hardware Version	Rev. A
Boot Code Version	1.0
Runtime Code Version	1.04

NOTE: Information displayed here may vary.

3-4-2 Internet Connection Status

You can use this function to know the status of current Internet connection.

Please click 'Internet Connection' menu on the left of web management interface, and the following message will be displayed on your web browser:

Attain IP Protocol :	Fixed IP connect
IP Address :	192.168.1.10
Subnet Mask :	255.255.255.0
Default Gateway :	192.168.1.254
MAC Address :	00:0E:2E:44:6B:02
Primary DNS :	192.168.0.2
Secondary DNS :	0.0.0.0

NOTE: This information will vary depending on the connection status.

3-4-3 Device Status

You can use this function to know the status of your router.

Please click 'Device Status' menu on the left of web management interface, and the following message will be displayed on your web browser:

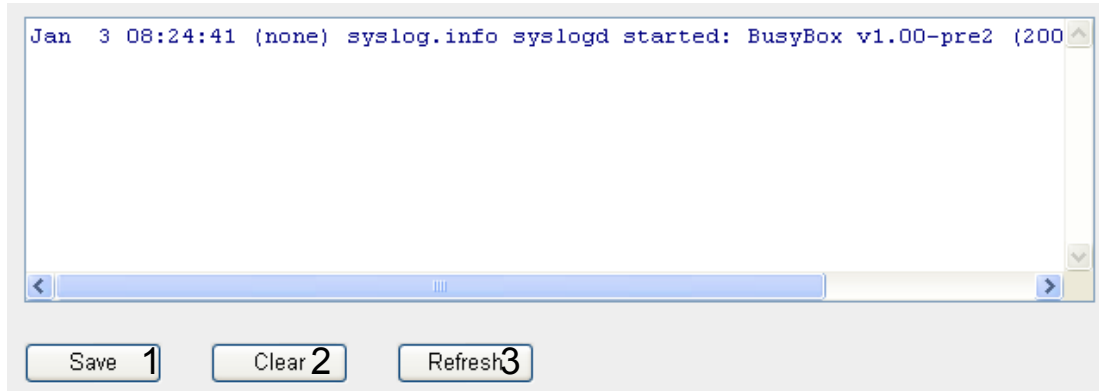
Wireless Configuration	
Mode	AP
ESSID	default
Channel Number	1
Security	WEP
LAN Configuration	
IP Address	192.168.2.1
Subnet Mask	255.255.255.0
DHCP Server	Disable
MAC Address	00:0e:2e:44:6b:01

NOTE: This information will vary depending on the device status.

3-4-4 System Log

All important system events are logged. You can use this function to check the event log of your router.

Please click 'System Log' menu on the left of web management interface, and the following message will be displayed on your web browser:

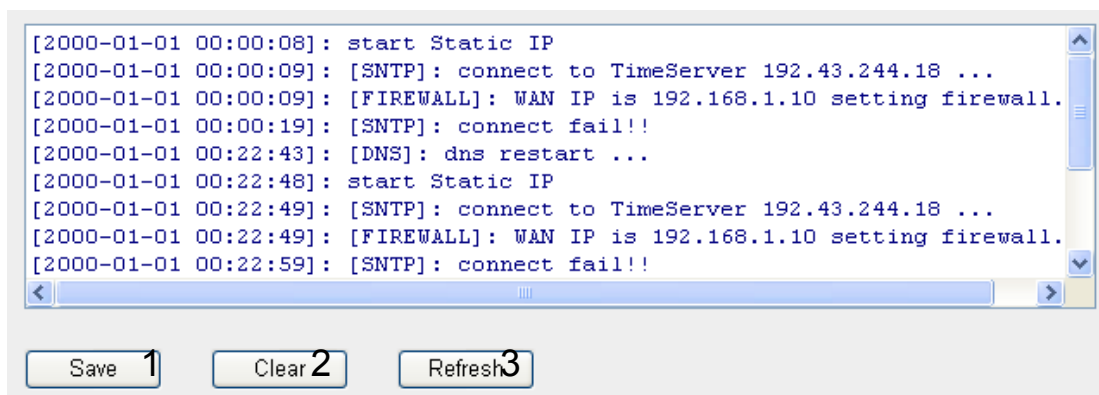


Save (1):	Save current event log to a text file.
Clear (2):	Delete all event logs displayed here.
Refresh (3):	Refresh the event log display.

3-4-5 Security Log

All information about network and system security is kept here, and you can use this function to check the security event log of your router.

Please click 'Security Log' menu on the left of web management interface, and the following message will be displayed on your web browser:



Save (1):	Save current event log to a text file.
Clear (2):	Delete all event logs displayed here.
Refresh (3):	Refresh the event log display.

3-4-5 Active DHCP Client List

If you're using the DHCP server function of this router, you can use this function to check all active DHCP leases issued by this router.

Please click 'Active DHCP client' menu on the left of web management interface, and the following message will be displayed on your web browser:

IP Address	MAC Address	Time Expired(s)
192.168.2.240	00:10:60:db:52:9d	58

All information about active DHCP leases issued by this router will be displayed here. You can click 'Refresh' button to display latest information.

3-4-6 Statistics

You can use this function to check the statistics of wireless, LAN, and WAN interface of this router.

Please click 'Statistics' menu on the left of web management interface, and the following message will be displayed on your web browser:

Wireless LAN	<i>Sent Packets</i>	0
	<i>Received Packets</i>	0
Ethernet LAN	<i>Sent Packets</i>	5119
	<i>Received Packets</i>	154638
Ethernet WAN	<i>Sent Packets</i>	98
	<i>Received Packets</i>	0

You can click 'Refresh' button to display latest information.

3-5 Configuration Backup And Restore

You can backup all configurations of this router to a file, so you can make several copied of router configuration for security reason.

Please click 'Tool' located at the upper-right corner of web management interface, then click 'Configuration Tools' on the left of web management interface, then the following message will be displayed on your web browser:



<i>Backup Settings (1):</i>	<i>Press 'Save...' button, and you'll be prompted to download the configuration as a file, default filename is 'config.bin', you can save it as another filename for different versions, and keep it in a safe place.</i>
<i>Restore Settings (2):</i>	<i>Press 'Browse...' to pick a previously-saved configuration file from your computer, and then click 'Upload' to transfer the configuration file to router. After the configuration is uploaded, the router's configuration will be replaced by the file you just uploaded.</i>
<i>Restore to Factory Default (3):</i>	<i>Click this button to remove all settings you made, and restore the configuration of this router back to factory default settings.</i>

3-6 Firmware Upgrade

The system software used by this router is called as 'firmware', just like any applications on your computer, when you replace the old application with a new one; your computer will be equipped with new function.

Please click 'Tool' located at the upper-right corner of web management interface, then click 'Firmware Upgrade' on the left of web management interface, then the following message will be displayed on your web browser:



Please click 'Next', and the following message will be displayed:

Firmware Upgrade ?

This tool allows you to upgrade the Broadband router's system firmware. Enter the path and name of the upgrade file and then click the APPLY button below. You will be prompted to confirm the upgrade.

Click 'Browse' button first, you'll be prompted to provide the filename of firmware upgrade file. Please download the latest firmware file from our website, and use it to upgrade your router.

After a firmware upgrade file is selected, click 'Apply' button, and the router will start firmware upgrade procedure automatically. The procedure may take several minutes, please be patient.

NOTE: Never interrupt the upgrade procedure by closing the web browser or physically disconnect your computer from router. If the firmware you uploaded is corrupt, the firmware upgrade will fail, and you may have to return this router to the dealer of purchase to ask for help. (Warranty voids if you interrupted the upgrade procedure).

3-7 System Reset

If you think the network performance is bad, or you found the behavior of the router is strange, you can perform a router reset, sometime it will solve the problem. To do so, please click 'Tool' located at the upper-right corner of web management interface, then click 'Reset' on the left of web management interface, then the following message will be displayed on your web browser:

Reset ?

In the event that the system stops responding correctly or stops functioning, you can perform a Reset. Your settings will not be changed. To perform the reset, click on the APPLY button below. You will be asked to confirm your decision. The Reset will be complete when the LED Power light stops blinking.

Please click 'Apply' to reset your router, and it will be available again after few minutes, please be patient.

CHAPTER IV: APPENDIX

4-1 Hardware Specification

- SoC: Ralink RT3052
- Flash: 4MB
- SDRAM: 16MB
- WAN Port: 10/100M UTP Port x 1
- LAN Ports: 10/100M UTP Port x 4
- Antenna: 3dBi Dipole Antenna x 2 (2T2R Spatial Multiplexing MIMO configuration; 2 antennas are for signal transmitting and 2 antennas are for signal receiving)
- Power: 12VDC, 1A Switching Power Adapter
- Dimension: 30(H) x 157(W) x 127(D) mm
- Transmit Power: 11n: 15dBm±1dBm, 11g: 15dBm±1dBm, 11b: 18dBm±1dBm
- Temperature: 32~104°F (0 ~ 40°C)
- Humidity: 10-90% (NonCondensing)
- Certification: FCC, CE

4-2 Troubleshooting

If you found the router is working improperly or stop responding to you, don't panic! Before you contact your dealer of purchase for help, please read this troubleshooting first. Some problems can be solved by you within very short time!

Scenario	Solution
Router is not responding to me when I want to access it by web browser	<ol style="list-style-type: none">Please check the connection of power cord and network cable of this router. All cords and cables should be correctly and firmly inserted to the router.If all LEDs on this router are off, please check the status of A/C power adapter, and make sure it's correctly powered.You must use the same IP address section which router uses.Are you using MAC or IP address filter? Try to connect the router by another computer and see if it works; if not, please restore your router to factory default settings (pressing 'reset' button for over 10 seconds).Set your computer to obtain an IP address automatically (DHCP), and see if your computer can get an IP address.If you did a firmware upgrade and this happens, contact your dealer of purchase for help.If all above solutions don't work, contact the dealer of purchase for help.
Can't get connected to Internet	<ol style="list-style-type: none">Go to 'Status' -> 'Internet Connection' menu, and check Internet connection status.Please be patient, sometime Internet is just that slow.If you connect a computer to Internet directly before, try to do that again, and check if you can get connected to Internet with your computer directly attached to the device provided by your Internet service provider.Check PPPoE / L2TP / PPTP user ID and password again.Call your Internet service provide and check if there's something wrong with their service.

	<ul style="list-style-type: none"> f. If you just can't connect to one or more website, but you can still use other internet services, please check URL/Keyword filter. g. Try to reset the router and try again later. h. Reset the device provided by your Internet service provider too. i. Try to use IP address instead of hostname. If you can use IP address to communicate with a remote server, but can't use hostname, please check DNS setting.
I can't locate my router by my wireless client	<ul style="list-style-type: none"> a. 'Broadcast ESSID' set to off? b. All two antennas are properly secured. c. Are you too far from your router? Try to get closer. d. Please remember that you have to input ESSID on your wireless client manually, if ESSID broadcast is disabled.
File download is very slow or breaks frequently	<ul style="list-style-type: none"> a. Are you using QoS function? Try to disable it and try again. b. Internet is slow sometimes, being patient. c. Try to reset the router and see if it's better after that. d. Try to know what computers do on your local network. If someone's transferring big files, other people will think Internet is really slow. e. If this never happens before, call you Internet service provider to know if there is something wrong with their network.
I can't log onto web management interface: password is wrong	<ul style="list-style-type: none"> a. Make sure you're connecting to the correct IP address of the router! b. Password is case-sensitive. Make sure the 'Caps Lock' light is not illuminated. c. If you really forget the password, do a hard reset.
Router become hot	<ul style="list-style-type: none"> a. This is not a malfunction, if you can keep your hand on the router's case. b. If you smell something wrong or see the smoke coming out from router or A/C power adapter, please disconnect the router and A/C power adapter from utility power (make sure it's safe before you're doing this!), and call your dealer of purchase for help.
The date and time of all event logs are wrong	<ul style="list-style-type: none"> a. Adjust the internal clock of router.

4-3 Glossary

Default Gateway (Router): Every non-router IP device needs to configure a default gateway's IP address. When the device sends out an IP packet, if the destination is not on the same network, the device has to send the packet to its default gateway, which will then send it out towards the destination.

DHCP: Dynamic Host Configuration Protocol. This protocol automatically gives every computer on your home network an IP address.

DNS Server IP Address: DNS stands for Domain Name System, which allows Internet servers to have a domain name (such as www.Broadbandrouter.com) and one or more IP addresses (such as 192.34.45.8). A DNS server keeps a database of Internet servers and their respective domain names and IP addresses, so that when a domain name is requested (as in typing "Broadbandrouter.com" into your Internet browser), the user is sent to the proper IP address. The DNS server IP address used by the computers on your home network is the location of the DNS server your ISP has assigned to you.

DSL Modem: DSL stands for Digital Subscriber Line. A DSL modem uses your existing phone lines to transmit data at high speeds.

Ethernet: A standard for computer networks. Ethernet networks are connected by special cables and hubs, and move data around at up to 10/100 million bits per second (Mbps).

Idle Timeout: Idle Timeout is designed so that after there is no traffic to the Internet for a pre-configured amount of time, the connection will automatically be disconnected.

IP Address and Network (Subnet) Mask: IP stands for Internet Protocol. An IP address consists of a series of four numbers separated by periods, which identifies a single, unique Internet computer host in an IP network. Example: 192.168.2.1. It consists of 2 portions: the IP network address, and the host identifier.

The IP address is a 32-bit binary pattern, which can be represented as four cascaded decimal numbers separated by “.”: aaa.aaa.aaa.aaa, where each “aaa” can be anything from 000 to 255, or as four cascaded binary numbers separated by “.”: bbbbbbbb.bbbbbbbb.bbbbbbbb.bbbbbbbb, where each “b” can either be 0 or 1.

A network mask is also a 32-bit binary pattern, and consists of consecutive leading 1’s followed by consecutive trailing 0’s, such as

11111111.11111111.11111111.00000000. Therefore sometimes a network mask can also be described simply as “x” number of leading 1’s.

When both are represented side by side in their binary forms, all bits in the IP address that correspond to 1’s in the network mask become part of the IP network address, and the remaining bits correspond to the host ID.

For example, if the IP address for a device is, in its binary form,

11011001.10110000.10010000.00000111, and if its network mask is,

11111111.11111111.11110000.00000000

It means the device’s network address is

11011001.10110000.10010000.00000000, and its host ID is,

00000000.00000000.00000000.00000111. This is a convenient and efficient method for routers to route IP packets to their destination.

ISP Gateway Address: (see ISP for definition). The ISP Gateway Address is an IP address for the Internet router located at the ISP’s office.

ISP: Internet Service Provider. An ISP is a business that provides connectivity to the Internet for individuals and other businesses or organizations.

LAN: Local Area Network. A LAN is a group of computers and devices connected together in a relatively small area (such as a house or an office). Your home network is considered a LAN.

MAC Address: MAC stands for Media Access Control. A MAC address is the hardware address of a device connected to a network. The MAC address is a unique identifier for a device with an Ethernet interface. It is comprised of two parts: 3 bytes of

data that corresponds to the Manufacturer ID (unique for each manufacturer), plus 3 bytes that are often used as the product's serial number.

NAT: Network Address Translation. This process allows all of the computers on your home network to use one IP address. Using the broadband router's NAT capability, you can access the Internet from any computer on your home network without having to purchase more IP addresses from your ISP.

Port: Network Clients (LAN PC) uses port numbers to distinguish one network application/protocol over another. Below is a list of common applications and protocol/port numbers:

Application	Protocol	Port Number
Telnet	TCP	23
FTP	TCP	21
SMTP	TCP	25
POP3	TCP	110
H.323	TCP	1720
SNMP	UCP	161
SNMP Trap	UDP	162
HTTP	TCP	80
PPTP	TCP	1723
PC Anywhere	TCP	5631
PC Anywhere	UDP	5632

PPPoE: Point-to-Point Protocol over Ethernet. Point-to-Point Protocol is a secure data transmission method originally created for dial-up connections; PPPoE is for Ethernet connections. PPPoE relies on two widely accepted standards, Ethernet and the Point-to-Point Protocol. It is a communications protocol for transmitting information over Ethernet between different manufacturers

Protocol: A protocol is a set of rules for interaction agreed upon between multiple parties so that when they interface with each other based on such a protocol, the interpretation of their behavior is well defined and can be made objectively, without confusion or misunderstanding.

Router: A router is an intelligent network device that forwards packets between different networks based on network layer address information such as IP addresses.

Subnet Mask: A subnet mask, which may be a part of the TCP/IP information provided by your ISP, is a set of four numbers (e.g. 255.255.255.0) configured like an IP address. It is used to create IP address numbers used only within a particular network (as opposed to valid IP address numbers recognized by the Internet, which must be assigned by InterNIC).

TCP/IP, UDP: Transmission Control Protocol/Internet Protocol (TCP/IP) and Unreliable Datagram Protocol (UDP). TCP/IP is the standard protocol for data transmission over the Internet. Both TCP and UDP are transport layer protocol. TCP performs proper error detection and error recovery, and thus is reliable. UDP on the other hand is not reliable. They both run on top of the IP (Internet Protocol), a network layer protocol.

WAN: Wide Area Network. A network that connects computers located in geographically separate areas (e.g. different buildings, cities, countries). The Internet is a wide area network.

Web-based management Graphical User Interface (GUI): Many devices support a graphical user interface that is based on the web browser. This means the user can use the familiar Netscape or Microsoft Internet Explorer to Control/configure or monitor the device being managed.

Free Manuals Download Website

<http://myh66.com>

<http://usermanuals.us>

<http://www.somanuals.com>

<http://www.4manuals.cc>

<http://www.manual-lib.com>

<http://www.404manual.com>

<http://www.luxmanual.com>

<http://aubethermostatmanual.com>

Golf course search by state

<http://golfingnear.com>

Email search by domain

<http://emailbydomain.com>

Auto manuals search

<http://auto.somanuals.com>

TV manuals search

<http://tv.somanuals.com>