



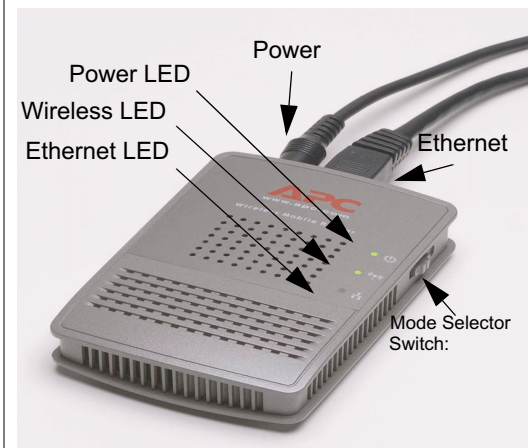
## APC 3-in-1 Wireless Mobile Router Quick Installation Guide

Model Number WMR1000GI  
Part Number 990-2145

**Warning: Be careful when using the APC 3-in-1 Wireless Mobile Router for an extended period of time, as the unit can become hot.**

### Introduction

Thank you for purchasing the APC 3-in-1 Wireless Mobile Router (Figure 1). This device provides connectivity up to 54 Mbps. It is designed for wireless mobile users needing Internet sharing and networking in mobile and home/small office applications.



**Figure 1. APC 3-in-1 Wireless Mobile Router**

Note: The purchaser must use the APC 3-in-1 Wireless Mobile Router in full compliance with local laws and ordinances and guidelines established by the local service provider.

### Package Contents

- APC 3-in-1 Wireless Mobile Router
- 5-Volt, 2-Amp AC/DC Power Adapter
- Category 6 (CAT6) Ethernet Cable
- Quick Installation Guide.

- Documentation CD
- Universal Serial Bus (USB) Power Cable

Please contact the reseller if any of the listed items are missing from the packaging.

### Features and Benefits

- Internet connection to DSL or cable modem via a 10/100 Mbps Ethernet port
- IEEE 802.11g and IEEE 802.11b compliant – interoperable with multiple vendors equipment
- Provides roaming within 802.11b WAN/LAN environment
- Dynamic Host Configuration Protocol (DHCP) for dynamic Internet Protocol (IP) configuration, and domain name forwarding for domain name mapping
- Stateful Packet Inspection (SPI) firewall with client privileges, hacker prevention, and Network Address Translation (NAT). NAT also enables multi-user access with a single-user account, and virtual server functionality (providing protected access to Internet services such as Web, File Transfer Protocol (FTP), electronic mail and Telnet)
- Virtual Private Network (VPN) support using PPTP, L2TP or IPSec pass-through
- Easy setup through a Web browser on any operating system that supports Transmission Control Protocol/Internet Protocol (TCP/IP)
- Compatible with all popular Internet applications
- Can be powered using a USB cable or power adapter
- Integrates with APC's TravelPower® Case (Figure 2) and is compatible with APC's TravelPower Adapter.

**Note: The TravelPower Case is sold separately and may or may not include the TravelPower Adapter, depending on the model purchased. For more information, go to [www.apc.com](http://www.apc.com).**



**Figure 2. Wireless Mobile Router Connector to APC's TravelPower Adapter**

### System Requirements

To use the Wireless Mobile Router, required system elements are as follows:

- A computer that runs a Microsoft® Windows®-based Operating System (OS) or Apple™ Mac™ OS
- A Web browser, such as Microsoft Internet Explorer® 5.0 or above, installed on one computer at the site for configuring the APC 3-in-1 Wireless Mobile Router
- For wireless LAN connections, each computer must have a wireless network adapter installed
- Internet access from your Internet Service Provider (ISP) using a Digital Subscriber Line (xDSL), cable modem, or Large Area Network (LAN) with Dynamic Host Configuration Protocol (DHCP) service (protocol for automating the configuration of computers that use TCP/IP)
- TCP/IP network protocol installed on each computer in order to configure the Router or to access the Internet

### Modes

The APC 3-in-1 Wireless Mobile Router functions in the following modes (see the back panel for switch settings):

- **Access Point (AP) mode** (switch position 1) to act as a wireless bridge between an existing LAN and a wireless user. It inherits the profile (security, user, etc.) of the existing LAN
- **AP/Router mode** (switch position 2) to act as a wireless networking device that connects networks by a wireless connection and create specific profiles, such as security and users
- **Config (Configuration) mode** (switch position 3) to connect to the APC 3-in-1 Wireless Mobile Router to change its configuration
- **Client mode** (switch position 4) to convert an Ethernet port to a wireless interface

**Security Alert: When in a location, such as a hotel or airport, that requires payment to connect to the Internet, APC recommends using "AP/Router" mode (switch position 2) with security set to WEP, WPA, or MAC filtering. These settings help to avoid any unauthorized access and charges. For more information on security and mode selection, see the user's manual.**

### Installation

The Wireless Mobile Router can be powered using a USB cable (**Step 1a**), or by A/C power (**Step 1b**).

**Caution: Connect the APC 3-in-1 Wireless Mobile Router only to the USB port of the APC TravelPower Adapter. Do not connect the APC 3-in-1 Wireless Mobile Router to the USB port of any other device. Failure to comply may result in damage to the device.**

### Step 1a - Connect Power (USB)

Power the Wireless Mobile Router using the USB cable (provided), as follows:

1. Connect one end of the USB cable to the APC TravelPower Adapter.
2. Connect the other end of the USB cable to the Wireless Mobile Router.



**Figure 3. Wireless Mobile Router Connected to APC's TravelPower Adapter Using a USB Cable**

### Step 1b - Connect Power (Power Adapter)

Power the APC 3-in-1 Wireless Mobile Router using the 100/120/230-volt power adapter provided with the router (Figure 4), as follows:

1. Connect one end of the adapter power cord to the APC 3-in-1 Wireless Mobile Router.
2. Connect the transformer block to a 100~230-volt power source.



**Figure 4. Wireless Mobile Router Adapters (for parts of the world, not including North America)**

### Step 2 - Network Connection

Connect a DSL or cable modem on an existing network to the Ethernet port of the APC 3-in-1 Wireless Mobile Router.

### Step 3 - Mode Setup

The following steps describe how to perform:

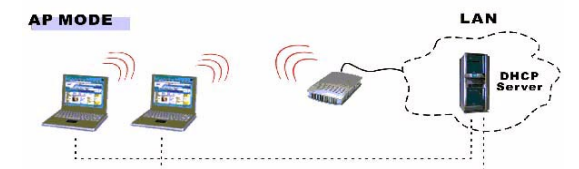
- Access Point (AP) Mode Setup
- AP/Router Mode Setup
- Client Mode Setup

**Note: Use Config mode to perform all configurations. Make sure that the mode selector switch on the side of the router is set properly.**

**Note: APC recommends using WEP security (at a minimum) to protect against unauthorized access to the router. For information on setting up WEP security, refer to the APC 3-in-1 Wireless Mobile Router User's Manual on the documentation CD.**

### Step 3a - Access Point (AP) Mode Setup

**Note: By default, the APC 3-in-1 Wireless Mobile Router allows both 802.11g and 802.11b connections.**



**Figure 5. AP Mode Configuration**

To configure the APC 3-in-1 Wireless Mobile Router for AP mode, proceed as follows:

1. Use the mode selector switch on the side of the router to select **Config mode** (switch position 3).
2. Power up the router and wait for the Ethernet LED to come on, indicating that the router is ready.
3. Establish a wired or wireless connection to the router. (Wired is recommended whenever possible). For **wired**, connect a standard LAN cable from the computer's 10/100BaseT Ethernet port to the Ethernet port on the router. For **wireless**, select the wireless network with the SSID APC\_AP.
4. Start the Web browser.
5. In the Location or Address bar, enter `config.ap`.

**Note: This will work only in Config mode.**

- If the admin password was set on the **System** screen, a prompt appears for the **username** and **password**. Enter **Admin** for the username, and **APC** for the password. The **Mode Configuration** screen appears.
- Click the **Configure** button for **AP mode**. The **AP Setup** screen (Figure 6) appears.

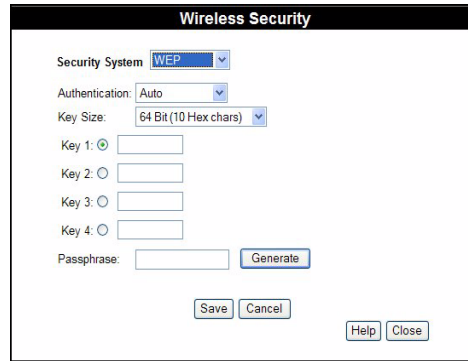


Figure 6. AP Setup Screen

- Enter all relevant data. Refer to the *APC 3-in-1 Wireless Mobile Router User's Manual* (on the documentation CD) for more information.

### Step 3b - AP/Router Mode Setup

**Note:** By default, the APC 3-in-1 Wireless Mobile Router allows both 802.11g and 802.11b connections.

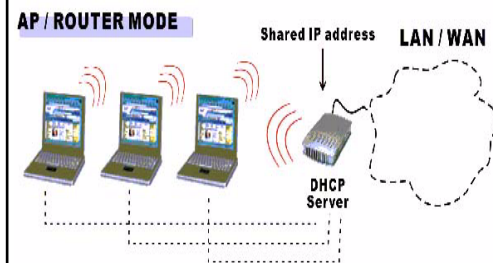


Figure 7. AP/Router Mode Configuration

To configure the Wireless Mobile Router for **AP/Router mode**, proceed as follows:

- Use the mode selector switch on the side of the router to select **Config mode** (switch position 3).
- Power up the router and wait for the Ethernet LED to come on, indicating that the router is ready.
- Make sure that a connection is established between the computer and the router (a wired connection is recommended).
- Start the Web browser.

- In the Location or Address bar, enter `http://` and the current IP address for the wireless LAN, as set on the **AP/Router** screen. The default value is 192.168.1.1. For example: `http://192.168.1.1`
- If the admin password was set on the **System** screen, a prompt appears for the **username** and **password**. Enter **Admin** for the username, and **APC** for the password. The **Mode Configuration** screen appears.
- Click the **Configure** button for **AP/Router mode**. The **AP/Router Mode Setup** screen (Figure 8) appears.

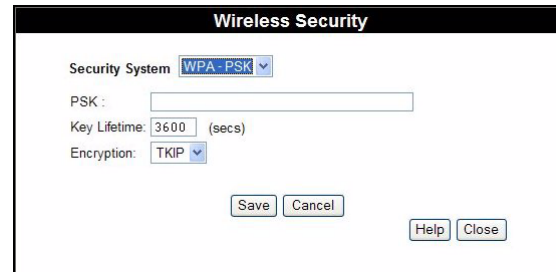


Figure 8. AP/Router Setup Screen

- Enter all relevant data. Refer to the *APC 3-in-1 Wireless Mobile Router User's Manual* (on the documentation CD) for more information.

### Step 3c - Client Mode Setup

#### CLIENT MODE



Figure 9. Client Mode Configuration

To configure the APC 3-in-1 Wireless Mobile Router for **Client mode**, proceed as follows:

- Use the mode selector switch on the side of the router to select **Config mode** (switch position 3).
- Power up the router and wait for the Ethernet LED to come on, indicating that the router is ready.

- Establish a wired or wireless connection to the router (Wired is recommended whenever possible). For **wired**, connect a standard LAN cable from the computer's 10/100BaseT Ethernet port to the Ethernet port on the Wireless Mobile Router. For **wireless**, select the wireless network with the SSID **APC\_AP**.
- Start the Web browser.
- In the Location or Address bar, enter `config.ap`.
- Note: This works only in Config mode.**
- If the admin password was set on the **System** screen, a prompt appears for the **username** and **password**. Enter **Admin** for the username, and **APC** for the password.
- The **Mode Configuration** screen appears. Click the **Configure** button for **Client mode**. The **Client Mode Setup** screen (Figure 10) appears.

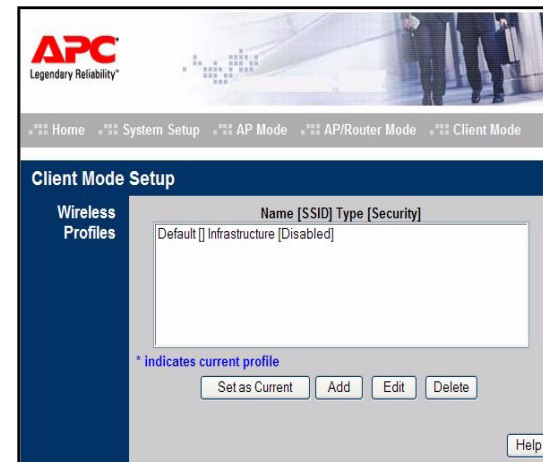


Figure 10. Client Mode Setup Screen

- Enter all relevant data. Refer to the *APC 3-in-1 Wireless Mobile Router User's Manual* (on the documentation CD) for more information.
- Once setup is complete, use the mode selector switch to select **Client mode** (switch position 4).
- Restart your computer, or the device with which you are using the APC 3-in-1 Wireless Mobile Router, in Client mode.

## Troubleshooting

Before contacting Technical Support, please refer to the *APC 3-in-1 Wireless Mobile Router User's Manual* on the documentation CD, and to the technical information available at: [www.apc.com](http://www.apc.com).

## Warranty

The standard warranty is two (2) years from the date of purchase. APC's standard procedure is to replace the original unit with a factory reconditioned unit. APC will ship the replacement unit after the repair department receives the defective unit, or cross-ship upon the receipt of a valid credit card number. The customer pays for shipping the unit to APC. APC pays ground freight transportation costs to ship the replacement unit to the customer.

## Warranty Registration

To register this product for purposes of the warranty, please go to [warranty.apc.com](http://warranty.apc.com).

## APC Contact Information

<b>Technical Support</b>	<a href="http://www.apc.com/support">www.apc.com/support</a>
<b>Internet</b>	<a href="http://www.apc.com">www.apc.com</a>
<b>USA and Canada</b>	866-WIFI-APC
<b>France</b>	0800 906 483
<b>Asia-Pacific</b>	(+65) 3896 823
<b>China</b>	(+86) (10) 8529 9888
<b>Europe/Middle East/Africa</b>	(+353) 91 702020
<b>Worldwide</b>	(+1) 401 789 5735

990-2145 Copyright © 2005 American Power Conversion  
All rights reserved. APC is a registered trademark of American Power Conversion. All other trademarks are the property of their respective owners.

## Free Manuals Download Website

<http://myh66.com>

<http://usermanuals.us>

<http://www.somanuals.com>

<http://www.4manuals.cc>

<http://www.manual-lib.com>

<http://www.404manual.com>

<http://www.luxmanual.com>

<http://aubethermostatmanual.com>

Golf course search by state

<http://golfingnear.com>

Email search by domain

<http://emailbydomain.com>

Auto manuals search

<http://auto.somanuals.com>

TV manuals search

<http://tv.somanuals.com>