

Yale®

ELECTRONIC BATTERY OPERATED SECURITY SOLUTION

e boss™

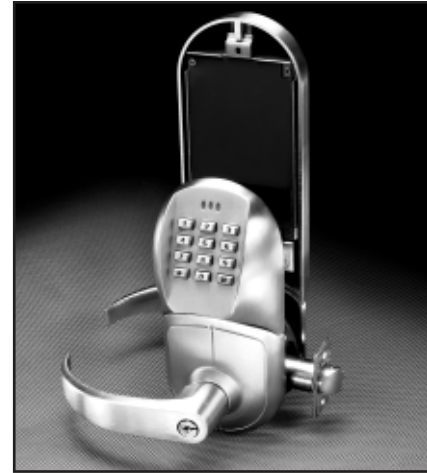


CATALOG

GENERAL INFORMATION

eBOSS™ INTRODUCTION

The eBOSS E5400LN series electronic locksets are designed to provide the industrial, commercial, residential and hospitality marketplace with reliable, competitively priced, keyless entry with or without mechanical key override in interior or exterior environments.



FINISHES

PVD Lifetime Finish

Physical Vapor Deposition (PVD) is a technologically advanced finish coating that provides the ultimate surface protection against environmental elements and everyday wear and tear. PVD matches clear coated finishes in appearance, yet surpasses them in durability. Yale® warrants all its PVD finishes against corrosion, tarnish, wear, discoloration and peeling for the lifetime of the part to which it has been applied. Ask your sales representative for specific warranty information.

ANSI Code	Finish Description
605e*	Bright Brass, PVD
606e*	Satin Brass, PVD
609	Satin Brass, Blackened, Satin Relieved, Clear Coated
612	Satin Bronze, Clear Coated
613e*	Satin Bronze, Oxidized, PVD
616	Satin Bronze, Blackened, Satin Relieved, Clear Coated
619	Satin Nickel Plated, Clear Coated
625	Bright Chrome Plated
626	Satin Chrome Plated
693	Black Powder Coat

*PVD finish is standard for customers desiring a non-wearing finish.

CONTENTS

Basic Operation & Functions . . .	3
Features & Benefits	4-5
Specifications	6
Lever Designs	6
Cylinders	7-8
Options & Accessories	8
Strikes and Latchbolts	9
Ordering Information	10
Architectural Specification	11

CERTIFICATIONS

A.D.A.

The eBOSS meets accessibility guidelines of the Americans with Disabilities Act and the requirements of the Uniform Federal Accessibility Standards and ANSI 117.1, all requiring ease of accessibility for the handicapped. The eBOSS keypad also meets ADA 12-button telephone requirements.

ANSI

Grade 1 ANSI 156.2

Fire Listings

UL - cUL Fire Label for all door functions up to 3 hours.

WARRANTY

The eBOSS E5400LN Series Cylindrical Lock keypad, printed circuit board and components are warranted to be free from defects in workmanship and materials under normal use and service for 3 years from date of delivery. In addition, the lockset carries a lifetime warranty against lever sag and lever spring breakage. PVD Finish also comes with a lifetime warranty. Ask your sales representative for complete warranty information.

OPERATION

BASIC OPERATION

The outside lever is always locked except when the lock is in passage mode. The eBOSS™ allows up to 94 individual user codes to be valid. Codes may be from two to seven digits in length, and digits may be repeated. All programming is accomplished easily from the keypad utilizing LED and audible guidance. Changing codes takes only a matter of seconds for an authorized user.

- User enters a valid code (2-7 digits) followed by the [*] key.
- Lock will unlock (green LED) for a user definable duration of 1-255 seconds (default 4 seconds), then re-lock.
- If lock is in lockout mode, the yellow LED will light, indicating denied entry.

If enabled, the green LED will light upon each depression of a key and for the duration that the lock is unlocked. If the audible sounder is enabled, it will beep concurrently with the LED as keys are depressed. If an invalid code is entered, the red LED will light and an audible sound sequence of one long beep, followed by four short beeps, will indicate denied entry.

FUNCTIONS

E5496LN - Mechanical key can be used to retract latchbolt for entry

E5486LN - Non-key override

PROGRAMMABLE FEATURES

All standard programming of the eBOSS is easily performed through the keypad.

- **Master Code** – Assigns Supervisor Code and Emergency Code.
- **Supervisor Code** – Allows all programming of the controller except for changing Master Code.
- **User Codes** – Used for standard entry. 94 User Codes may be programmed into the eBOSS.
- **Emergency Code** – Allows emergency entry of the lock system when the controller low battery voltage is in the “black out” condition or if the lock is in the Lockout mode.
- **Lockout Code** – Restricts User Codes from the ability to gain access. Only the Supervisor Code and Emergency code can override.
- **Passage Code** – Enables the passage feature, maintaining the lock unlocked.
- **Key Press Feedback** - Enables or disables the LED indicators or audible sound features of the lockset.
- **Factory Code Reset** – Resets all user definable functions to factory default settings. Will not reset Specialty Codes or User Codes.
- **Re-Lock Duration** – Adjusts the duration the lock remains unlocked from 1-255 seconds. Default is 4 seconds.
- **Keypad Lockout** – Deters tampering by disabling the keypad after three successive failed attempts or after 25 successive key presses without a valid code. Default is 10 seconds but user programmable from 1 to 255 seconds.

OPERATIONAL MODES

- **Secure** – Normal locked state. Any assigned user code can gain access.
- **Lockout** – Lockset will not accept any assigned user codes except for the Supervisor and Emergency Codes.
- **Passage** – Unlocked state

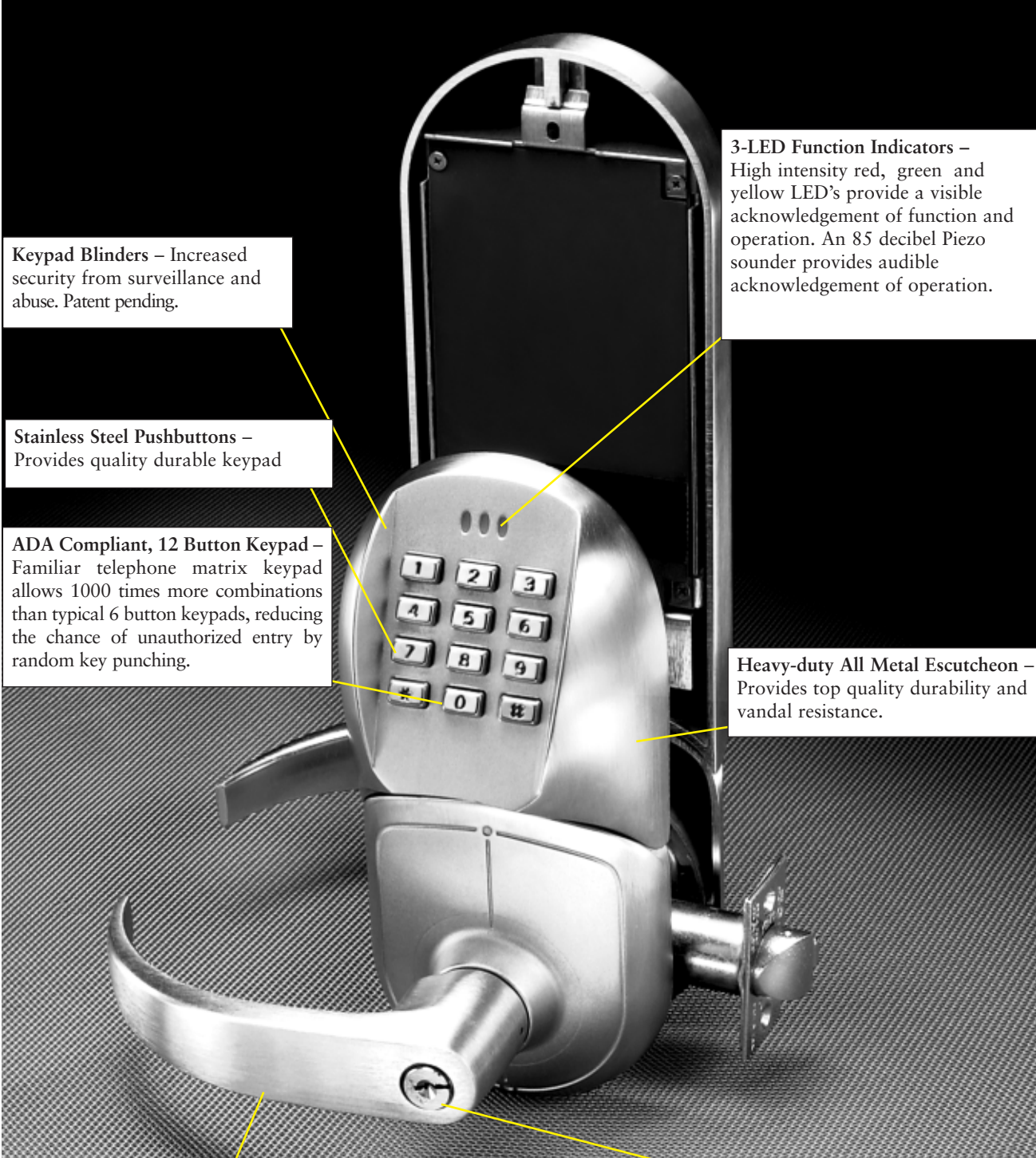
BATTERY REPLACEMENT

The inside battery cover is easily removed for battery replacement. Each lock contains six alkaline “AA” batteries, which typically last for 100,000 cycles.

FEATURES AND BENEFITS

Features	Benefits
Grade 1 Cylindrical Motorized Lock	Based upon the field proven Yale® 5400LN lockset
Utilizes 5400LN Components	Allows maintenance/changing the mechanical portion of the lockset without touching of the electronic portion
Battery Operated	Standalone technology is convenient and less expensive than hard wiring. Six AA alkaline batteries typically allow a 100,000 cycles before replacement is necessary.
Two-Tier Low Battery Indicator	Visual and Audible – allows time to change batteries before unit fails to operate
Audible Pushbutton Feedback	Gives audible acknowledgement of operation (can be disabled)
Weather Resistant Keypad	Allows exterior application without gasketing. Conformal coated PCB and silicone sealed circuitry ensures protection in the harshest environments.
Request to Enter Input	Allows remote access capability (2 wire)
Hard Wire Input Option	9 Volt DC input allows continuous power (see page 8 for power supplies)
Passage Code Function	Allows maintained entry for high volume non-restricted traffic
Emergency Code Function	Allows emergency entry when the controller low battery voltage is in the “black out” condition or when the lock is in lockout mode.
Lockout Code Function	Restricts user access. Only the Supervisor code and the Emergency code will override the lockout.
Non-Volatile Memory	Maintains all codes when power is lost or batteries are being changed
Modular Design	No need to replace the entire lock if keypad portion is damaged, or vice-versa
Variety of Finishes	Matches all available Yale architectural finishes
User Friendly Programming	Saves time and can be accomplished at the keypad without the use of a computer or PDA
94 User Capacity	Provides diversity and flexibility of use
Easily to retrofit and install	eBOSS™ easily retrofits most cylindrical and electromechanical locks that utilize the standard ANSI A115.2 series prep.
Secure Design	eBOSS provides the maximum in tamper resistance with the controller board located on the secure side of the door. Interfering with or even destroying the keypad will not release the door.
Code Security	Factory master and emergency preset codes must be changed before any other codes can be programmed.

FEATURES & BENEFITS



Keypad Blinders – Increased security from surveillance and abuse. Patent pending.

Stainless Steel Pushbuttons – Provides quality durable keypad

ADA Compliant, 12 Button Keypad – Familiar telephone matrix keypad allows 1000 times more combinations than typical 6 button keypads, reducing the chance of unauthorized entry by random key punching.

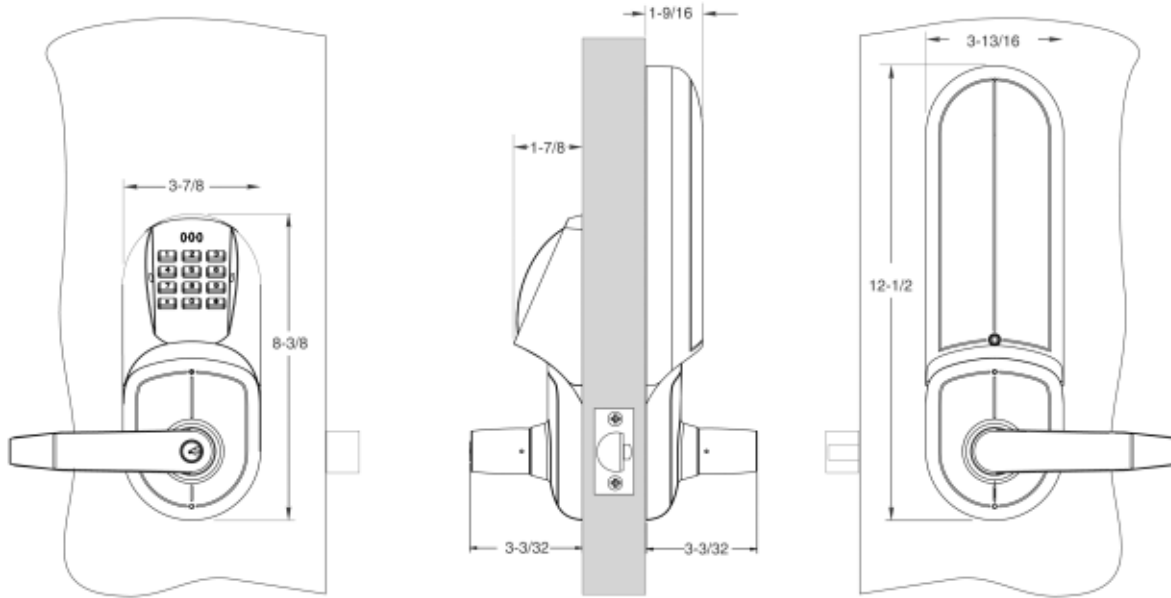
3-LED Function Indicators – High intensity red, green and yellow LED's provide a visible acknowledgement of function and operation. An 85 decibel Piezo sounder provides audible acknowledgement of operation.

Heavy-duty All Metal Escutcheon – Provides top quality durability and vandal resistance.

5400LN Patented Freewheeling Levers – When the outside lever is locked, it will rotate freely up and down while remaining securely locked. (Patent No. 4,920,773). Available in popular Augusta, Monroe and Pacific Beach designs to provide vandal resistance and allow integration with other *Yale* mechanical hardware.

Accepts all 5400LN cylinder options (with modified tailpieces) – Allows integration with existing key systems, including interchangeable core for Corbin Russwin, Best®, Sargent®, ASSA®, Medeco® and Schlage®

SPECIFICATIONS



FREEWHEELING LEVER MECHANISM

eBOSS™ features the patented (Patent No. 4,920,773) Freewheeling lever mechanism. When the outside lever is locked, it will rotate freely up and down while remaining securely locked.



DOOR APPLICATIONS

eBOSS fits doors from 1-3/4" to 2-1/4" thick featuring patented (Patent No. 6,131,970) door adjustment for 2" and 2-1/4" doors. Standard for 2-3/4" backset.

ISO 9001 FACILITY

Designed and manufactured in a certified ISO 9001 facility.

LEVER DESIGNS



Augusta (AU)



Monroe (MO)



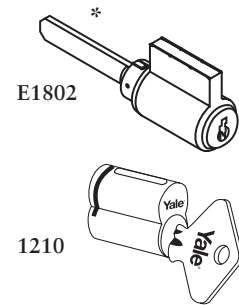
Pacific Beach (PB)

CYLINDERS

CYLINDER OPTIONS

The following selection guide indicates the correct key-in-lever cylinder for each locking segment.

eBOSS™		Types of Cylinder Mechanisms								
		Conventional		Patented Keyway		Security		High Security		
Cylinder Types	Fixed Core	6-pin	7-pin	6-pin	7-pin	6-pin	7-pin	6-pin	7-pin	
	Key-In-Lever	E1802	E1802A	EK402	EK402	E5802	E5802A	N/A	N/A	
	Interchangeable Core									
	LFIC	1210	1220	K800	K800	5210	5220	N/A	N/A	
SFIC	N/A	N/A	K600	K600	N/A	N/A	N/A	N/A		



*The "E" prefix for eBoss cylinders indicates a modified tailpiece. When using standard 1802, 1802A, 5802, 5802A or K402 cylinders, refer to the installation instructions for details on cutting the tailpiece. Using an incorrect tailpiece will damage the lock.

SCHLAGE® C & SARGENT® LA KEYWAY

Illustration	Model Number	Number of Pins
	E2802	Schlage® 6-pin C Keyway 0-Bitted or Keyed Random
	E3802	Sargent® 6-pin LA Keyway 0-Bitted or Keyed Random

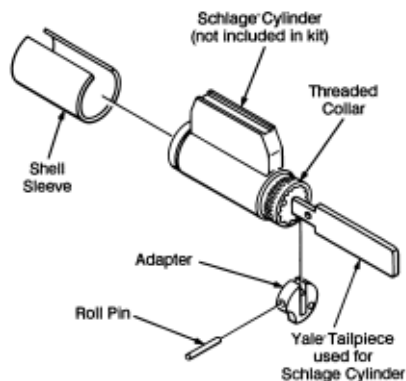
Yale® KeyMark® PATENTED KEYWAY CYLINDERS

For those applications requiring patented key control, Yale's KeyMark® line of patented keyway cylinders provides the ultimate protection against unauthorized key duplication. Yale KeyMark's utility-patented Security Leg® keyway features increased resistance against picking and impressioning and can easily retrofit into existing systems. For further details and availability, refer to the separate Yale KeyMark catalog.

CYLINDERS

E107S SCHLAGE® CYLINDER ADAPTER KIT

Used to modify Schlage® cylinder for fit in the eBOSS™.



LEVERS ACCEPTING COMPETITORS INTERCHANGEABLE CORE CYLINDERS

Interchangeable Core System	Prefix	Ordering Example
Best®	B (i.e. B-AU, B-PB, B-MO)	B-AU-E5496LN x 626
Schlage®	SI (i.e. SI-AU, SI-PB)*	SI-AU-E5496LN x 626
Corbin Russwin	R (i.e. R-AU, R-PB)*	R-AU-E5496LN x 626
Medeco®, ASSA®	M (i.e. M-AU)**	M-AU-E5496LN x 626

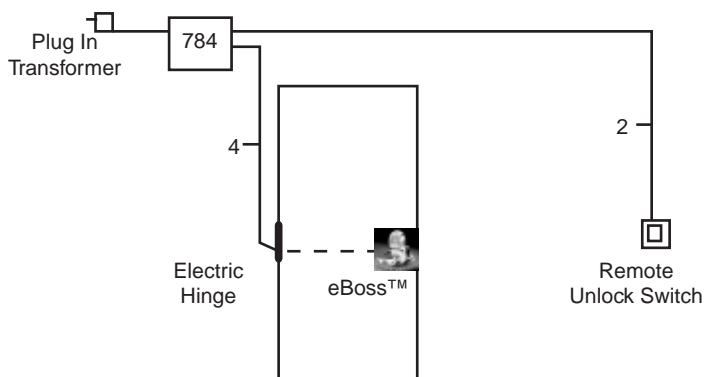
*Schlage® and Corbin Russwin options not available with MO levers.

**Medeco®, ASSA® option available only with AU lever.

LOCKSET OPTIONS AND ACCESSORIES

Description	Part Number
Optional Remote 9VDC Power Supply. Includes plug in transformer (used for hardwiring up to two eBOSS locks)	784
Remote Power and Request to Enter Wire Harness (required for hardwiring)	14-5496-0212-000
Wood Mount (Lock not included)	13-0202-9010-999

HARDWIRE OPTION DIAGRAM



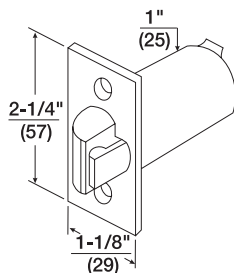
STRIKES

STRIKES

Yale® eBOSS™ locksets are supplied standard with a 497 ANSI strike. A variety of optional strikes are also available. All strikes are located on the same vertical and horizontal center lines as the latchbolt. Some strikes are available in a variety of lip lengths to accommodate varying thickness of doors and frames. To determine the proper length of the lip, measure from the center line of the strike to the edge of the jamb and add 1/4" (6mm). All strikes are reversible.

<p>Model No. 497 ANSI Strike 1-1/4" supplied standard. 1-1/8", 1-1/2", and 1-3/4" lip lengths available by special order. For door and frames with ANSI A115.2 preparations.</p>	<p>Model No. 495 Strike 1-1/4" curved lip, wrought box supplied. 1", 1-1/2", 1-3/4" and 2" curved lip lengths available by special order.</p>	<p>Model No. 202 Strike Box Available to special order. Specify 497 x 202.</p>

DEADLOCKING LATCHBOLTS



Model No.	Front	Backset	Throw	Front Width	Latch Diameter
694	Beveled	2-3/4"	1/2"	1-1/8" (29mm)	1" (25mm)
F694	Flat	2-3/4"	1/2"	1-1/8" (29mm)	1" (25mm)
3694	Beveled	3-3/4"	1/2"	1-1/8" (29mm)	1" (25mm)
480	Beveled	2-3/4"	5/8"	1-1/8" (29mm)	1" (25mm)
F480	Flat	2-3/4"	5/8"	1-1/8" (29mm)	1" (25mm)
3480	Beveled	3-3/4"	5/8"	1-1/8" (29mm)	1" (25mm)
480B	Beveled	2-3/4"	3/4"	1-1/8" (29mm)	1" (25mm)
F480B	Flat	2-3/4"	3/4"	1-1/8" (29mm)	1" (25mm)
3480B	Beveled	3-3/4"	3/4"	1-1/8" (29mm)	1" (25mm)

Note: To order with lockset, specify model number. To order separately, specify model number and finish.

ATTACHING SCREWS

For Model No. 495
#8-8-32 x 3/4" (19mm) Phillips flat head combination wood and machine screws.
P/N 81-2012-0416

For Model No. 497
#12-12-24 x 1" Phillips flat head combination wood and machine screws.
P/N 81-2012-0620

NOTE: When ordering strike or attaching screws individually, specify the finish required; i.e. 497 x 202 x 606.

ORDERING INFORMATION

HOW TO ORDER EXAMPLE WITHOUT KEY OVERRIDE

Quantity	Design	Function	Latch	Strike	Door Thickness*	Finish
100	AU	E5486LN	F694	497	1-3/4"	626

*Door thickness must be specified for doors over 2".

HOW TO ORDER EXAMPLE WITH KEY OVERRIDE

Quantity	Design	Function	Latch	Strike	Cylinder	Door Thickness*	Finish
100	AU	E5496LN	694	497	E1802	1-3/4"	626

*Door thickness must be specified for doors over 2".

AVAILABLE FUNCTIONS (SEE PAGE 8 FOR IC OPTIONS)

Non Key Override	AU-E5486LN	MO-E5486LN	PB-E5486LN
Yale® Key Override	AU-E5496LN	MO-E5496LN	PB-E5496LN
Sargent® LA Keyway Cylinder	AU-E5496LN x Sargent® LA Keyway	MO-E5496LN x Sargent® LA Keyway	PB-E5496LN x Sargent® LA Keyway
Schlage® Standard Cylinder Prep	S-AU-E5496LN x Less Cylinder	S-MO-E5496LN x Less Cylinder	S-PB-E5496LN x Less Cylinder
Schlage® "C" Keyway Cylinder	AU-E5496LN x Schlage® C Keyway	MO-E5496LN x Schlage® C Keyway	PB-E5496LN x Schlage® C Keyway



Outside View



Inside View

ARCHITECTURAL SPECIFICATIONS

Digital keypad locksets shall meet or exceed the following certifications:

ANSI A156.2 series 4000, Grade 1 standard for cylindrical lever locks

FCC subpart 15B

UL10C positive pressure for "A" 3 hour fire rated openings

Federal Handicap and ANSI A117.1 Accessibility Code

ANSI A115.2 Preparation with a maximum of 2 additional through-bolt holes

Lock shall be vandal resistant, constructed of all metal with no plastic. Lockset shall be of a modular design to allow future upgradability and ease of installation and serviceability. Lockset chassis shall be constructed of heavy-gauge cold rolled steel, zinc dichromate plated to protect against rust and corrosion. Locks shall have a stainless steel deadlocking latch bolt. Lock chassis shall include a motor for lock and unlock functions. Locksets shall be adjustable to fit doors between 1 -3/4" (44mm) to 2-1/4" (57mm) thick.

Locksets shall have separate anti-rotation through-bolts in the 6 o'clock and 12 o'clock position outside the 2 1/8" face bore, and shall have no exposed mounting screws. Locksets shall have solid one-piece, cast levers without plastic inserts, and shall be a minimum of 5-1/4" in length. Levers shall operate independently, and shall have inside and outside lever return springs. Outside levers on the keyed locksets shall be removable only when the designated key is in the cylinder. Lever design shall be ADA compliant, chosen from manufacturer's standard lever designs.

Vandal resistant levers shall be offered as a standard feature and shall be Freewheeling in the locked condition. Locksets that are rigid in the locked condition or require resetting (breakaway) are not acceptable. Locksets shall fit a standard ANSI A115.2 series door preparation for Grade 1 locks modified by a maximum of two additional through bolt holes.

Locksets shall have the capacity of accepting 7-pin interchangeable core and high security cylinders to provide expansion capacity for large master keyed systems.

Keypad shall be of a vandal resistant, anti-pull-off design with stainless steel construction and have 12 buttons arranged in a standard telephone matrix to be compliant with federal handicap standards. Keypad shall be standard weather resistant without the need for a gasket or a separate weather resistance option. Lockset shall be capable of operating in temperatures from -40° C to +66° C and 95% relative humidity, non-condensing. Keypad shall be capable of performing 3,000,000 cycles minimum. Keypad shall have all metal vertical blinders integral with the escutcheon to protect pushbuttons from abuse and also shield pass codes during entry. Controlling electronics shall be housed on the interior side of the door for security.

Lock shall be programmable through the keypad only, without the requirement of a separate electronic device. Locks shall have key over-ride, or non-key over-ride and a 2-wire remote unlock input. Locks shall be furnished standard with 6 "AA" batteries and have non-volatile memory to save programs, settings, codes and users in the lock in the event of a complete battery drain. The standard 6 "AA" batteries shall act as a battery back-up when hard power (9VDC) is supplied. Lockset shall have a two-tiered low battery warning system to alert users of impending battery drain. Locks shall have a 9VDC power input option to allow continuous power.

Lock shall have 99 available codes: 1 Master, 1 Emergency, 1 Supervisor, 1 Lockout, 1 Passage and 94 Users. Lockset shall accommodate codes from 2 to 7 digits in length. Lock shall have three LEDs for visual indication: Green-Unlock, Red-Error, Yellow-Pushbutton Acceptance & Programming. All locksets shall not allow full programming until the master and emergency factory codes have been changed for added security. Lock shall have audible tone for the visually impaired.

All locksets shall carry a comprehensive 3 year warranty. Locksets shall carry a lifetime warranty against lever sag or lever spring breakage.

All locksets shall be eBOSS™ Keypad Battery Operated E5400LN Series Grade 1 Key-in Lever cylindrical locksets as assembled by Yale Commercial Locks and Hardware. No approved substitutes.


online literature

and templates

For the latest information on Yale Commercial Lock and Hardware products, visit our website at www.yalecommercial.com.

Click on the "Literature" button to find:

- Catalogs
- Parts manuals
- Templates
- Specifications
- Installation instructions

Yale® customers can click on the ebusiness symbol  on the website to register for an ebusiness account to:

- Check the status of orders
 - Check availability of Quick Ship items
 - Track your order and confirm delivery
 - Receive email notification of template changes
- And More...

www.yalecommercial.com



Yale Commercial Locks and Hardware

Address: 1902 Airport Road, Monroe, NC 28110 USA

Tel: 1-800-438-1951 • Fax: 1-800-338-0965 • www.yalecommercial.com

Yale-Corbin Canada Ltd.

Address: 6940 Edwards Boulevard, Mississauga, Ontario, Canada L5T 2W2

Tel: 1-800-461-3007 • Fax: 1-800-461-8989 • www.yalecorbin.on.ca

Yale® and Yale Security Inc.® are registered trademarks of Yale Security Inc. Freewheeling and Design™ and eBoss™ are trademarks of Yale Security Inc. Other product brand names may be trademarks or registered trademarks of their respective owners and are mentioned for reference purposes only. Copyright© 2004 Yale Security Inc. All rights reserved. These materials are protected under US copyright laws. All contents current at time of publication. Yale Security Inc. reserves the right to change availability of any item in this bulletin, its design, construction, and/or its materials.

The ASSA ABLOY Group is the world's leading manufacturer and supplier of locking solutions, dedicated to satisfying end-user needs for security, safety and convenience.

Free Manuals Download Website

<http://myh66.com>

<http://usermanuals.us>

<http://www.somanuals.com>

<http://www.4manuals.cc>

<http://www.manual-lib.com>

<http://www.404manual.com>

<http://www.luxmanual.com>

<http://aubethermostatmanual.com>

Golf course search by state

<http://golfingnear.com>

Email search by domain

<http://emailbydomain.com>

Auto manuals search

<http://auto.somanuals.com>

TV manuals search

<http://tv.somanuals.com>