



ASUS Mobile Dock

IN SEARCH OF INCREDIBLE



User Guide



ASUS

E9030 First Edition / April 2014



Download from www.Somanuals.com. All Manuals Search And Download.




Airplane precautions

Contact your airline provider to learn about related inflight services that can be used and restrictions that must be followed when using your ASUS Tablet in-flight.


IMPORTANT! You can send your ASUS Mobile Dock through x-ray machines (used on items placed on conveyor belts), but do not expose them from magnetic detectors and wands.

Safety precautions

This ASUS Mobile Dock should only be used in environments with ambient temperatures between 0°C (32°F) and 35°C (95°F).



Long time exposure to extremely high or low temperature may quickly deplete and shorten the battery life. To ensure the battery's optimal performance, ensure that it is exposed within the recommended environment temperature.



Package contents



ASUS Mobile Dock

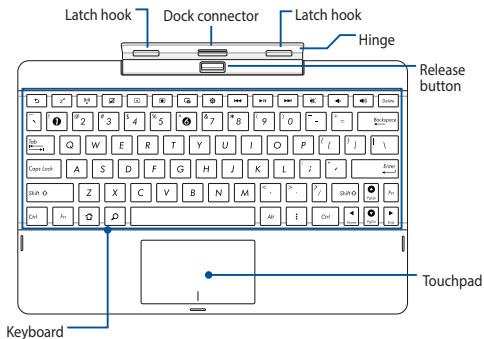


User guide

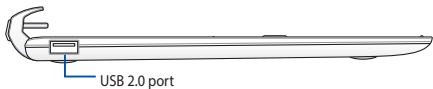
NOTE: If any of the items is damaged or missing, contact your retailer.

Your ASUS Mobile Dock

Top view

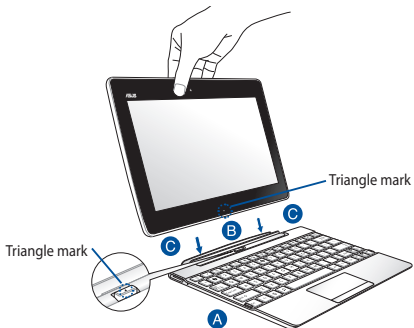


Left view



Using your ASUS Mobile Dock

Docking your ASUS Tablet



To dock your ASUS Tablet:

- A** Put the ASUS Mobile Dock on a flat and stable surface.
- B** Align the ASUS Tablet with the ASUS Mobile Dock.

NOTE: Use the triangle mark of the ASUS Tablet and ASUS Mobile Dock's release button to align both devices.

- C** Firmly insert the ASUS Tablet into the hinge. Ensure that the latch hooks are fully inserted to the hinge holes of your ASUS Tablet.

IMPORTANT! Always pick up the entire assembly from the bottom when your ASUS Tablet is attached to the ASUS Mobile Dock.

Special keys

The special keys on your ASUS Mobile Dock have standalone functions and some must be used with the function key <Fn>.

NOTE: The placement of the special keys on the Mobile Dock may vary with country or region, but their functions remain the same.



Returns to the previous page.



Activates sleep mode.



Toggles the internal wireless LAN ON or OFF.



Toggles the touchpad ON or OFF.



Decreases the display brightness.



Increases the display brightness.



Captures the screen image.



Launches the Settings screen.



Deletes texts.



Returns to the previous track when playing music.



Starts playing music from your playlist. Resumes or pauses the current playback.



Fast forwards or skips to the next track during playback.



Mutes the speaker.



Decreases the speaker volume.





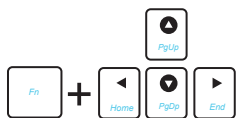
Increases the speaker volume.



Returns to Home Screen.



Activates the properties menu and is equivalent to  or  on the screen.



Press <Fn> and the arrow keys to scroll up and down or scroll to the start and end of a document or web page.

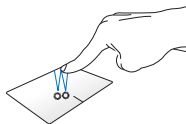
Using the Touchpad

Finger slide



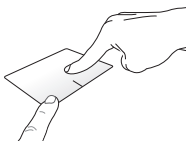
Slide your finger across the touchpad to move the pointer.

Tap/Double tap



Single tap to select an item. Double tap to launch an item.

Drag and drop



Select an item then press and hold the left-click button. Using your other finger, slide down the touchpad to drag and drop the item to a new location.

Two-finger scroll (up/down)



Slide two fingers to scroll up or down.

Two-finger scroll (left/right)



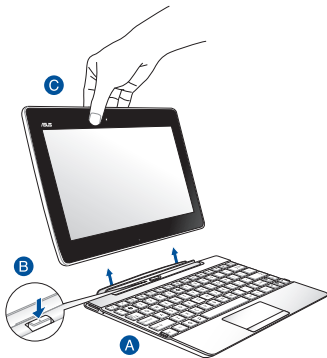
Slide two fingers to scroll left or right.

Two-finger tap and hold



Use two fingers to hold a selected item.

Undocking your ASUS Tablet



To undock your ASUS Tablet:

- A** Put the entire assembly on a flat and stable surface.
- B** Press the release button on the ASUS Mobile Dock to release the ASUS Tablet.
- C** Lift the ASUS Tablet to detach it from the ASUS Mobile Dock.

NOTE: The input voltage of your ASUS Mobile Dock is DC 3.75 V, 0.8 A.

Appendices

Federal Communications Commission Statement

This device complies with FCC Rules Part 15. Operation is subject to the following two conditions:

- This device may not cause harmful interference.
- This device must accept any interference received, including interference that may cause undesired operation.

This equipment has been tested and found to comply with the limits for a class B digital device, pursuant to Part 15 of the Federal Communications Commission (FCC) rules. These limits are designed to provide reasonable protection against harmful interference in a residential installation. This equipment generates, uses, and can radiate radio frequency energy and, if not installed and used in accordance with the instructions, may cause harmful interference to radio communications. However, there is no guarantee that interference will not occur in a particular installation. If this equipment causes harmful interference to radio or television reception, which can be determined by turning the equipment off and on, the user is encouraged to try to correct the interference by doing one or more of the following measures:

- Reorient or relocate the receiving antenna.
- Increase the separation between the equipment and receiver.
- Connect the equipment into an outlet on a circuit different from that to which the receiver is connected.

- Consult the dealer or an experienced radio/TV technician for help.

Changes or modifications not expressly approved by the party responsible for compliance could void the user's authority to operate the equipment.

The antenna(s) used for this transmitter must not be co-located or operating in conjunction with any other antenna or transmitter.

IC Warning Statement

The device could automatically discontinue transmission in case of absence of information to transmit, or operational failure. Note that this is not intended to prohibit transmission of control or signaling information or the use of repetitive codes where required by the technology.

The device for the band 5150-5250 MHz is only for indoor usage to reduce potential for harmful interference to co-channel mobile satellite systems; the maximum antenna gain permitted (for device in the bands 5250-5350 MHz and 5470-5725 MHz) to comply with the EIRP limit; and the maximum antenna gain permitted (for devices in the band 5275-5850 MHz) to comply with the EIRP limits specified for point-to-point and non point-to-point operation as appropriate, as stated in section A9.2(3). In addition, high-power radars are allocated as primary users (meaning they have priority) of the band 5250-5350 MHz and this radar could cause interference and/or damage to LE-LAN devices.

EC Declaration of Conformity

This product is compliant with the regulations of the R&TTE Directive 1999/5/EC. The Declaration of Conformity can be downloaded from <http://support.asus.com>.

Limitation of Liability

Circumstances may arise where because of a default on ASUS' part or other liability, you are entitled to recover damages from ASUS. In each such instance, regardless of the basis on which you are entitled to claim damages from ASUS, ASUS is liable for no more than damages for bodily injury (including death) and damage to real property and tangible personal property; or any other actual and direct damages resulted from omission or failure of performing legal duties under this Warranty Statement, up to the listed contract price of each product.

ASUS will only be responsible for or indemnify you for loss, damages or claims based in contract, tort or infringement under this Warranty Statement.

This limit also applies to ASUS' suppliers and its reseller. It is the maximum for which ASUS, its suppliers, and your reseller are collectively responsible.

UNDER NO CIRCUMSTANCES IS ASUS LIABLE FOR ANY OF THE FOLLOWING: (1) THIRD-PARTY CLAIMS AGAINST YOU FOR DAMAGES; (2) LOSS OF, OR DAMAGE TO, YOUR RECORDS OR DATA; OR (3) SPECIAL, INCIDENTAL, OR INDIRECT DAMAGES OR FOR ANY ECONOMIC CONSEQUENTIAL DAMAGES (INCLUDING LOST PROFITS OR SAVINGS), EVEN IF ASUS, ITS SUPPLIERS OR YOUR RESELLER IS INFORMED OF THEIR POSSIBILITY.

CE Mark Warning



CE marking for devices without wireless LAN/ Bluetooth

The shipped version of this device complies with the requirements of the EEC directives 2004/108/EC "Electromagnetic compatibility" and 2006/95/EC "Low voltage directive".

Power Safety Requirement

Products with electrical current ratings up to 6A and weighing more than 3Kg must use approved power cords greater than or equal to: H05VV-F, 3G, 0.75mm² or H05VV-F, 2G, 0.75mm².

For use with UL Listed I.T.E., ASUS Tablets series only.

ASUS Recycling/Takeback Services

ASUS recycling and takeback programs come from our commitment to the highest standards for protecting our environment. We believe in providing solutions for you to be able to responsibly recycle our products, batteries, other components as well as the packaging materials. Please go to <http://csr.asus.com/english/Takeback.htm> for detailed recycling information in different regions.

Coating notice

IMPORTANT! To provide electrical insulation and maintain electrical safety, a coating is applied to insulate the device except on the areas where the I/O ports are located.

Green ASUS notice

ASUS is devoted to creating environment-friendly products and packaging to safeguard consumers' health while minimizing the impact on the environment. The reduction of the number of the manual pages complies with the reduction of carbon emission.

For the detailed user manual and related information, refer to the user manual included in the ASUS Tablet or visit the ASUS Support Site at <http://support.asus.com/>.

Regional notice for Singapore

Complies with
IDA Standards
DB103778

This ASUS product complies with IDA Standards.

India RoHS

This product complies with the "India E-waste (Management and Handling) Rule 2011" and prohibits use of lead, mercury, hexavalent chromium, polybrominated biphenyls (PBBs) and polybrominated diphenyl ethers (PBDEs) in concentrations exceeding 0.1% by weight in homogenous materials and 0.01% by weight in homogenous materials for cadmium, except for the exemptions listed in Schedule-II of the Rule.

Proper disposal



Risk of explosion if battery is replaced by an incorrect type. Dispose of used batteries according to the instructions.



DO NOT throw the battery in municipal waste. The symbol of the crossed out wheeled bin indicates that the battery should not be placed in municipal waste.



DO NOT throw the ASUS Mobile Dock in municipal waste. This product has been designed to enable proper reuse of parts and recycling. The symbol of the crossed out wheeled bin indicates that the product (electrical, electronic equipment and mercury-containing button cell battery) should not be placed in municipal waste. Check local regulations for disposal of electronic products.



DO NOT throw the ASUS Mobile Dock in fire. DO NOT short circuit the contacts. DO NOT disassemble the ASUS Mobile Dock.

Copyright Information

No part of this manual, including the products and software described in it, may be reproduced, transmitted, transcribed, stored in a retrieval system, or translate into any language in any form or by any means, except documentation kept by the purchaser for backup purposes, without the express written permission of ASUSTek COMPUTER INC. ("ASUS").

ASUS and ASUS Tablet logo are trademarks of ASUSTek Computer Inc.

Information in this document is subject to change without notice.

Copyright © 2014 ASUSTek COMPUTER INC. All Rights Reserved.

Model name: AD03

| | |
|--|---|
| Manufacturer | ASUSTek COMPUTER INC. |
| Address, City | 4F, No. 150, LI-TE RD., PEITOU, TAIPEI 112, TAIWAN |
| Country | TAIWAN |
| Authorized Representative in Europe | ASUS COMPUTER GmbH |
| Address, City | HARKORT STR. 21-23, 40880 RATINGEN |
| Country | GERMANY |

ASUS Mobile Dock

17

EC Declaration of Conformity



We, the undersigned,

| | |
|--------------------------------------|--|
| Manufacturer: | ASUSTeK COMPUTER INC. |
| Address: | 4F, No. 150, LI-TE Rd., PEITOU, TAIPEI 112, TAIWAN |
| Authorized representative in Europe: | ASUS COMPUTER GmbH |
| Address, City: | HARKORT STR. 21-23, 40880 RATINGEN |
| Country: | GERMANY |

declare the following apparatus:

| | |
|----------------|-------------|
| Product name : | Mobile Dock |
| Model name : | AD03 |

conform with the essential requirements of the following directives:

2004/108/EC-EMC Directive

| | |
|---|---|
| <input checked="" type="checkbox"/> EN 55022:2010+A2:2011 | <input checked="" type="checkbox"/> EN 55024:2010 |
| <input checked="" type="checkbox"/> EN 61000-3-2:2006+A2:2009 | <input checked="" type="checkbox"/> EN 61000-3-3:2008 |
| <input type="checkbox"/> EN 55012:2001+A1:2003+A2:2008 | <input type="checkbox"/> EN 55020:2007+A11:2011 |

1999/5/EC-RATE Directive

| | |
|---|--|
| <input type="checkbox"/> EN 300 328 V1.7.1(2006-10) | <input type="checkbox"/> EN 301 489-1 V1.9.2(2011-09) |
| <input type="checkbox"/> EN 300 440-1 V1.6.1(2010-08) | <input type="checkbox"/> EN 301 489-3 V1.4.1(2002-08) |
| <input type="checkbox"/> EN 300 440-2 V1.4.1(2010-08) | <input type="checkbox"/> EN 301 489-4 V1.4.1(2009-05) |
| <input type="checkbox"/> EN 301 511 V9.0.2(2003-03) | <input type="checkbox"/> EN 301 489-7 V1.3.1(2005-11) |
| <input type="checkbox"/> EN 301 908-1 V5.2.1(2011-05) | <input type="checkbox"/> EN 301 489-9 V1.4.1(2007-11) |
| <input type="checkbox"/> EN 301 908-2 V5.2.1(2011-07) | <input type="checkbox"/> EN 301 489-17 V2.2.1(2012-09) |
| <input type="checkbox"/> EN 301 893 V1.6.1(2011-11) | <input type="checkbox"/> EN 301 489-24 V1.5.1(2010-09) |
| <input type="checkbox"/> EN 302 544-2 V1.1.1(2009-01) | <input type="checkbox"/> EN 302 526-2 V1.2.2(2007-06) |
| <input type="checkbox"/> EN 302 623 V1.1.1(2009-01) | <input type="checkbox"/> EN 302 526-3 V1.3.1(2007-09) |
| <input type="checkbox"/> EN 50360:2001 | <input type="checkbox"/> EN 301 357-2 V1.4.1(2008-11) |
| <input type="checkbox"/> EN 62479:2010 | <input type="checkbox"/> EN 302 291-1 V1.1.1(2005-07) |
| <input type="checkbox"/> EN 55085:2002 | <input type="checkbox"/> EN 302 291-2 V1.1.1(2005-07) |
| <input type="checkbox"/> EN 62311:2008 | |

2006/95/EC-LVD Directive

| | |
|---|---|
| <input checked="" type="checkbox"/> EN 60950-1 / A12:2011 | <input type="checkbox"/> EN 60065:2002 / A12:2011 |
|---|---|

2009/125/EC-ErP Directive

| | |
|--|---|
| <input type="checkbox"/> Regulation (EC) No. 1275/2008 | <input type="checkbox"/> Regulation (EC) No. 278/2009 |
| <input type="checkbox"/> Regulation (EC) No. 642/2009 | <input type="checkbox"/> Regulation (EC) No. 617/2013 |

2011/65/EU-RoHS Directive

Ver. 140331

CE marking



(EC conformity marking)

Position : **CEO**

Name : **Jerry Shen**

Signature : _____

Declaration Date: 16/04/2014

Year to begin affixing CE marking: 2014







support.asus.com



1 5 0 6 0 - 3 6 8 0 0 0 0 0



Free Manuals Download Website

<http://myh66.com>

<http://usermanuals.us>

<http://www.somanuals.com>

<http://www.4manuals.cc>

<http://www.manual-lib.com>

<http://www.404manual.com>

<http://www.luxmanual.com>

<http://aubethermostatmanual.com>

Golf course search by state

<http://golfingnear.com>

Email search by domain

<http://emailbydomain.com>

Auto manuals search

<http://auto.somanuals.com>

TV manuals search

<http://tv.somanuals.com>