

GSS-G & GST-G

Garden Speaker

Key Features

- Downward Firing Speaker Will Not Collect Dust or Condensation
- Rugged Construction Can Support Up To 250 lbs
- Easy Bayonet Attachment of Head Unit To Base, Enables Installation of Base During Excavation and Installation of Head Unit After Landscaping Has Been Completed
- Switch Selectable 70V Input or Direct 8Ω Input (Transformer Bypass)
- Easy Conduit Installation in Tall and Short Base With Dedicated Mounting Pads
- Speaker Protected By Triple Layer Grille
- Short Base (GSS-G) has Drill Points for 4" Square, 2-Gang EO Box, or 1-Gang Box Mounting to a Deck or Slab

Instructions

To Install GST-B Tall Base Unit:

1. Make sure you have a path to bury wire connected to speaker.
2. Dig a hole 8" deep x 30" diameter.
3. Run wire to hole.
4. Attach conduit or gland nut to flats on base.
5. Bring in wire and leave sufficient cable for adequate service loop (minimum 18") to reach head unit.
6. Fill base with clean dirt or sand to within 2"-3" of top for optimum bass performance.
7. Cover with provided temporary lid and attach with provided 1" screws if head unit is not to be attached immediately.
8. Back fill dirt to base. Top of base should be 2" – 3" above ground.

To Install GSS-G Short Base Unit:

If Using an EO Box:

1. Install 1-Gang, 2-Gang, or 4" x 4" box flush to mounting surface.
2. Cut out scribed line on bottom of base for 1- or 2-gang box.
3. Drill appropriate holes in base (outer 4 holes for 4" x 4", inner 4 for 2-gang, or 1 set of 2 inner for 1-gang).
4. Install wiring in box.
5. Set base on box and attach with screws.

If Using Conduit:

1. Mount base to surface with appropriate screws through the base bottom.
2. Attach conduit and bring in wire. Provide for surface loop (minimum 18").
3. Cover with provided temporary lid and attach with provided 1" screws if head unit is not to be attached immediately.



GSS-G
Short Base



GST-G
Tall Base

GSS-G & GST-G

Garden Speaker

To Install Head Unit on Base:

1. Remove temporary cover, if present. Retain screws.
2. Attach the purple wire from the head unit to the positive input wire and the black to the negative.
3. Line up the 3 "feet" on the head unit with the holes in the base.
4. Push the head unit down into the holes and turn clockwise to lock the head unit in place.
5. Put a 1" Phillips-head screw (supplied with the base) through the locking screw access hole to secure and prevent removal by unauthorized persons.
6. Put stick-on logo cover over access hole. (See Figure 1)
7. Select transformer tap wattage or 8Ω input position using a dime or small screwdriver to adjust stepped switch. (Switch is located on the underside of the "domed" section of the head unit near outer edge.) Insert red weather protection "plug" into recessed switch cavity using thumb to press the cap into place. (See Figure 2)



**Speaker
Head Unit**

Garden Speaker Specifications

Frequency Response	43Hz – 20kHz (±7dB)
Sensitivity (1W / 1M)	89.5dB (Half Space Reference)
Power Handling	70 Watts RMS
Horizontal Dispersion	360°
Speaker	Coaxial 8", Polypropylene / Kevlar Cone with Rubber Surround, ½" Mylar Dome Tweeter, 1½" Voice Coil, 21oz Magnet
Transformer	8, 16, & 32 Watts, with an External Switch for Tap Selection and for Bypassing Transformer
Dimensions	
Tall Base Width	17½" (448mm)
Tall Base Length	17½" (448mm)
Tall Base Height	20¾" (531mm)
Short Base Diameter	15½" (384mm)
Short Base Height	13½" (334mm)
Head Unit Weight	13.2 lbs (5.99Kg)
Short Base Weight	2.4 lbs (1.09Kg)
Tall Base Weight	6.4 lbs (2.9Kg)

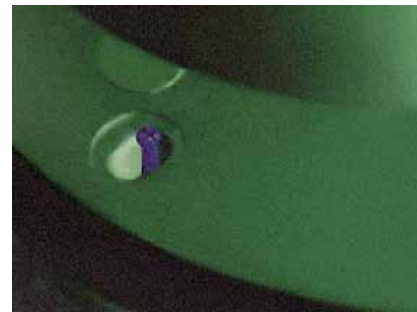


Figure 1



Figure 2

Free Manuals Download Website

<http://myh66.com>

<http://usermanuals.us>

<http://www.somanuals.com>

<http://www.4manuals.cc>

<http://www.manual-lib.com>

<http://www.404manual.com>

<http://www.luxmanual.com>

<http://aubethermostatmanual.com>

Golf course search by state

<http://golfingnear.com>

Email search by domain

<http://emailbydomain.com>

Auto manuals search

<http://auto.somanuals.com>

TV manuals search

<http://tv.somanuals.com>