

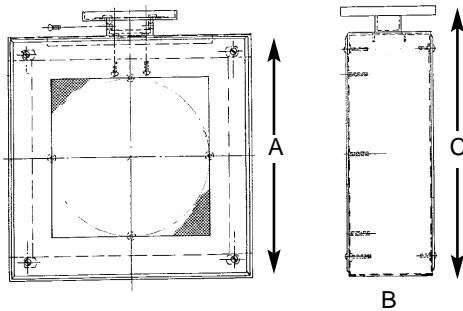


DELUXE BI-DIRECTIONAL CORRIDOR BAFFLE ENCLOSURE FOR 8" LOUDSPEAKERS

612-8



612 Series



FEATURES

- Attractive Design Includes a Cast Mounting Canopy, Enclosure, and Two Flush Grilles.
- Ideal for Corridor Applications Where Surface Mounting Space is Limited.
- Economical One-Loudspeaker Bi-Directional Design Mounts a Standard 8" Loudspeaker.

APPLICATIONS

Atlas Sound 612-8 bi-directional baffle/enclosure is ideal for corridor applications where mounting space above the ceiling is limited and where aesthetics are a primary concern. All units are suitable for use in hotels, office buildings, conference centers, reception areas, restaurants, airports, schools, churches, or other locations where bi-directional paging is an efficient and economical method of communication.

GENERAL DESCRIPTION

612-8. The handsome design of this deluxe corridor baffle/enclosure includes a cast mounting canopy surface enclosure and two flush grilles. Model 612-8 accommodates one standard 8" (203mm) loudspeaker and includes welded mounting studs for easy speaker installation plus a two-piece mounting canopy, and hardware for secure assembly to a standard 4" (102mm) octagon E.O. box. To prevent metallic resonance, the interior enclosure is coated with a metal deadener. Unit is manufactured of 20-gauge CRS and finished in textured white with a contrasting black mounting canopy.

Model 612-8 enclosure utilizes a single loudspeaker to provide economical, bi-directional sound reproduction. Front and rear mounted grilles provide maximum opportunity for natural bi-directional sound distribution created by the front and back movement of a loudspeaker cone.

ARCHITECT AND ENGINEER SPECIFICATIONS

Square bi-directional baffle/enclosure shall be Atlas Sound Model ____ [612-8 for standard 8" (203mm) loudspeakers] or approved equal. Baffle shall be constructed of 20-gauge cold rolled steel and shall have provisions for mounting to a standard 4" (102mm) octagon E.O. box (by others) via a two-piece cast mounting canopy. Metal deadener shall be applied to the interior of the enclosure to prevent metallic resonance. Baffle/enclosure finish shall be textured white with contrasting black mounting canopy.

SPECIFICATIONS						
MODEL	SPEAKER SIZE	DIMENSION (A)	DEEP (B)	PROJECTS (C)	MOUNTS	WEIGHT
612-8	8" (203mm)	11½" (295mm) SQ.	4½" (114mm)	12½" (327mm)	Standard 4" Octagon E.O. box	6.6 lbs. (3 kg.)

Specifications subject to change without notice



1601 JACK MCKAY BLVD. / ENNIS, TEXAS 75119 U.S.A. / TELEPHONE: (800) 876-3333 / FAX (800) 765-3435

THREE

Free Manuals Download Website

<http://myh66.com>

<http://usermanuals.us>

<http://www.somanuals.com>

<http://www.4manuals.cc>

<http://www.manual-lib.com>

<http://www.404manual.com>

<http://www.luxmanual.com>

<http://aubethermostatmanual.com>

Golf course search by state

<http://golfingnear.com>

Email search by domain

<http://emailbydomain.com>

Auto manuals search

<http://auto.somanuals.com>

TV manuals search

<http://tv.somanuals.com>