

Aries MK Trident (WP-17)

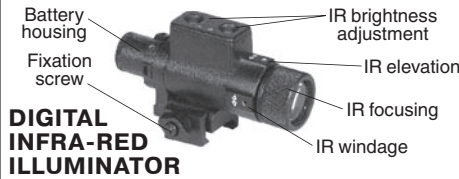
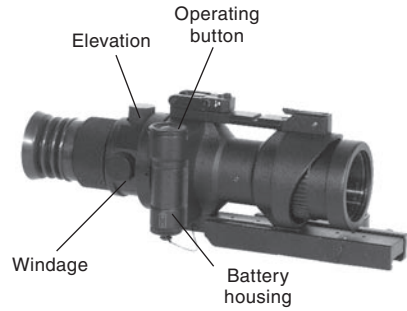
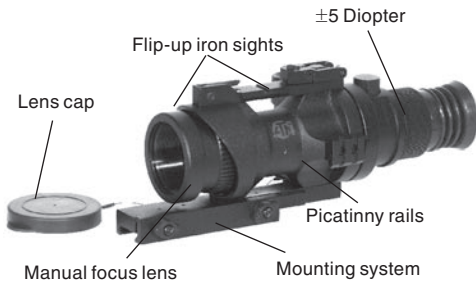


u s e r ` s g u i d e

Export of night vision equipment and optical sighting equipment is controlled by the U.S. Department of State, Office of Defense Trade Controls in accordance with International Traffic in Arms (ITAR), Title 22, Code of Federal Regulations Part 120-130 and/or the Export Administration Regulations (EAR) U.S. Department of Commerce. Illegal export of these commodities is strictly prohibited.

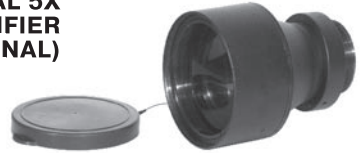


**AMERICAN
TECHNOLOGIES
NETWORK
CORP.**



**DIGITAL
INFRA-RED
ILLUMINATOR**

**A-FOCAL 5X
MAGNIFIER
(OPTIONAL)**



FEATURES

- LIGHT AND COMPACT DESIGN
- TOP-NOTCH PERFORMANCE WITH PRO-ORIENTED DESIGN
- 2.5X MAGNIFICATION WITH NEW F1:1.2 LENS, 43MM
- OPTIONAL A-FOCAL 5X MAGNIFIER
- ALL EXTERNAL SURFACES ARE A NON-REFLECTIVE MATTE BLACK FINISH (EXCEPT FOR THE OPTICAL ELEMENTS)
- FLIP UP BACK-UP IRON SIGHTS
- "RED ON GREEN" RETICLE SYSTEM WITH 1/2 MOA ADJUSTMENT
- ILLUMINATED CENTER RED RETICLE FOR OPTIMAL CONTRAST AGAINST A DARK OR LIGHT TARGET
- AUTOMATIC BRIGHTNESS CONTROL (ABC) FOR TUBE PROTECTION
- ONE-BUTTON OPERATION. CONTROLS AND ADJUSTMENTS ARE SIMPLE AND EASY TO OPERATE. PUSH BUTTON POWER ON/OFF. THE RETICLE BRIGHTNESS VARIES FROM OFF TO FULL BRIGHT WITH A PUSH OF A BUTTON
- WATERPROOF 1M, 30 MINUTES
- MOUNTS TO STANDARD WEAVER RAILS
- TRIDENT IS DESIGNED TO USE 1 STANDARD AA BATTERY
- WP-17 PROFESSIONAL VERSION: WATERPROOF 20M, 1 HOUR

APPLICATION

The New Aries MK Trident from ATN is a rugged, 2.5X night vision weapon sight that provides excellent observation, target acquisition and aiming capabilities for the demanding sports shooter or varmint hunter.

The Trident is available in a variety of Image Intensifier Tube configurations to fit into a wide array of budgets.

The best optics, tubes and performance make the Aries MK Trident one of the best commercial night vision weapon sights there is!

WP-17: For professional applications.

The information in this manual furnished for information use only, is subject to change without notice, is not to be construed as a commitment by ATN Corp.

ATN Corp. assumes no responsibility or liability for any errors or inaccuracies that may appear in this book.

©2005 ATN Corp. All right reserved.

SPECIFICATIONS

Generation	2nd, 2nd+, 3rd, 4th
Magnification.....	2.5X (5X optional)
Lens system	F1:1.2, F43mm
FOV	20 deg.
Range of focus	1m to infinity
Reticle	Red On Green
Windage & elevation adjustments	1/2MOA
IR illuminator	Super 450mw
Battery life.....	10-20 hours
Dimensions	9.8" x3.8" x3.3"
Weight	1.5kg/3.3 Lbs
Diopter adjustment	+/-5
Operating temperature	-40°C to +40°C

PREPARATION FOR OPERATION

Before getting started make sure to follow these steps:

- Install the battery into its housing with the polarity order shown on the main body of the unit.
- Switch on the Aries scope with the protective lens cover still attached to the lens.
- Make sure that the green luminance of the light intensifier tube is present.
- Observe the scene, and adjust the diopter and/or lens for optimal image clarity.
- You may now enter a dark environment or simply shut the lights off in order to darken the room.
- Next, remove the lens cap/daylight filter.
- Observe the scene, and adjust the front lens for ideal focus.
- Finally, you may want to turn the infra red (IR) illuminator on. Notice the ability of the Aries scope to see in total darkness with the aid of the IR illuminator.



OPERATING

MOUNTING

1. Slightly loosen the fixing screws on the 7/8" weaver rail built into the scope.
2. Place the scope on the dovetail mount of the fire arm making certain that the mount aligns with the receptor attachment screw groove. Adjust as necessary.
3. Tighten the fixing screws.

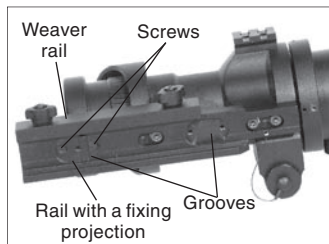
NOTE: Receptor attachment screws may need to be tightened after continuous shooting.

MOUNTING SYSTEM

The ATN Night Vision Riflescopes Mounting System allows to change the position of the riflescope flexibly on the weapon in relation to a shooter in combination with the fixed positions already available on the weaver rail. For this purpose in the base of the mounting bracket there is a rail with a fixing projection. There are three grooves in the mounting bracket for mounting this rail. Besides it is possible to change the position of the riflescope additionally by 1/3 of inch. For doing this one needs to about-face the rail.

To change the position of the riflescope on the weaver rail additionally follow the steps mentioned below:

1. Unscrew the two screws, which attach the rail to the mounting bracket.
2. Take the rail out of the groove.
3. About-face the rail in case of necessity.
4. Place the rail into another groove.
5. Fix the rail with the two screws.



NOTE: If the rail is not taken out easily, screw up tight one of screws into the threaded aperture in the middle of a fixing projection of the rail. Continue rotation of the screw. Thus the screw will push out a rail from a groove.

DIGITAL CONTROL

The Aries MK Trident has a simple and easy to operate one-button control and adjustment.

To turn on: Press the operation button by one short push

To turn off: Press the operation button again by one short push

To adjust reticle brightness:

After turning scope on, press and hold operation button.

Brightness will grow smoothly while the button is kept pressed.

Release the button when necessary brightness is achieved.

Press and hold the button second time for smooth decrease of brightness.

Adjustment could be easily seen if you look through the scope while adjustment.

FOCUSING

To focus your riflescope you will need to adjust the diopter first thing. Simply turn the diopter clockwise until it stops. Then, while looking through the diopter at a subject, slowly turn the diopter back counter clockwise until the grain in the image is sharp.

NOTE: We suggest that you focus the diopter during daylight with the filter on.

Next, focus the front lens until the image and the grain are both sharp. When you are in the low-light conditions and the daylight filter is off you may focus the front lens to receive a sharp image, the diopter should not be adjusted.

NOTE: The front lens should be readjusted as you view objects at different distances.

IR ILLUMINATION

Infra-red (IR) Illuminators are common for night vision technology. The IR light greatly enhances the performance of your Aries scope, while remaining almost totally invisible to the naked eye. In dark environment, power up the Aries scope. Now, find a scene and examine it without the IR on then with IR powered up. Note the difference in illumination. It is important to remember that the IR illuminator is simply an infra red light source, and like any light source it may lose its effectiveness over a great distance.

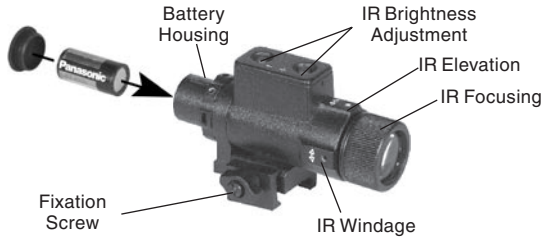
To fix the IR Illuminator to the riflescope screw the thumb screw on the IR into the thread on the scope. To switch the IR on and to adjust the brightness rotate the rheostat located on the side of the Illuminator. The changes of adjustment could be observed while looking through the scope. The IR is off when the mark on the rheostat coincides with "0" on the scale.

NOTE: The riflescope could be equipped with digitally controlled IR.

The IR illuminator control buttons are located on its side. To switch the Digital IR illuminator on/off press "+" and "-" buttons simultaneously. When the IR illuminator is switched on you can see the green LED lit. By pushing the buttons "+" and "-" you may adjust the IR brightness.

The IR beam is focusable to change the field of coverage. To change the beam width slightly turn the IR lens.

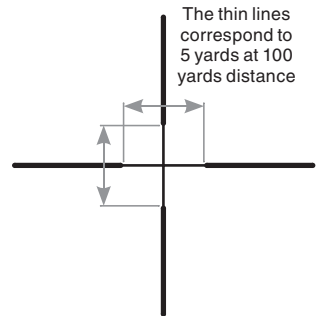
You could change the IR control panel fitting your needs. The screw-tool included into the set should be used for weakening the fixing screw located on the IR. Rotate the IR placing at in the most convenient position. Tighten the screw with the screw-tool to fix the new position.



RETICLE

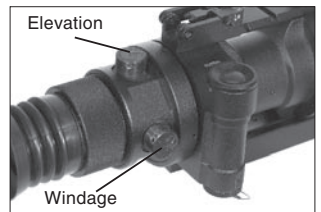
Aries MK Trident/WP-17 reticle gives a clearly aiming point, even when hard-to-see game blends into the background. Thinner posts and crosshairs center section covers a minimum of the target and allow for less target coverage, making precision shots on small target easy.

Heavy posts stand out against cover and leads your eye directly to the center intersection, The result is fast precision aiming.



WINDAGE AND ELEVATION

The vertical and horizontal adjustments for the Aries can be achieved by turning the elevation and windage adjustment mechanisms (remove dust caps first). Each click equals 1/2 inch at 100 yards. When reaching the maximum range of rotation do not use force.



CLEANING THE EYEPIECE

You may need to clean the eyepiece of the riflescope from time to time in order to guarantee top performance. When you receive your riflescope you should check for dust on the eyepiece of the unit.

First you will need to remove the eyepiece. To do that you will need to initially loosen the 2 set screws that can be found on the base. Then unscrew the eyepiece counter-clockwise to remove it.

NOTE: You do not have to remove the set screws completely, they are very small and easy to misplace.

CAUTION: Use only Photographic lens cleaning tissue on these surfaces. Be careful not to scratch or smudge any of these surfaces. When using compressed air to blow dust away, make sure to avoid inverting the can while spraying. This can cause frozen propellant to exit the can, which can cause serious problems with the glass and phosphor screen

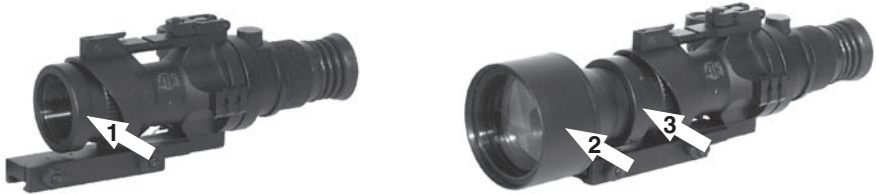
5X AFOCAL LENS (OPTIONAL)

The additional 5X Afocal Lens transform Aries MK Trident to 5X night vision sniper scope.

Unscrew the ferrule [1] from the front lens of the scope.

Screw the 5X Afocal Lens [2] into the front lens of the scope.

Screw the keeper ring [3] of 5x Afocal Lens on to the front lens the scope.



WARNINGS AND CAUTIONS

- Always remember to turn off the Aries scope when it is not in use. If you do not plan on using your aries scope for a period of more than 10 days, you should remove the batteries.
- Keep lens cap/daylight filter on when not in use.
- Avoid contact with dust, steam, and gas.
- The Aries scope are not harmful to the user or the environment.
- Do not disassemble except to clean the front lens and the eyepiece: **it will void your warranty.**
- Evaluate the scopes function by looking through it in a lit environment with the daylight filter lens cap on. Never use in daylight without the daylight filter lens cap on. Do not surpass ten minutes of testing.
- Never point the Aries scope at a bright light source. If the scope shuts off automatically after directing it at a bright light source, turn the unit off and wait 1 - 2 minutes before turning the unit back on.
- Adverse atmospheric conditions such as fog, smog, or haze and a lack of ambient light (moon or starlight) may diminish the effective viewing distance. All technical data for this unit was compiled in a controlled environment.

TROUBLESHOOTING

Q: Flashes, flickers, or clicking occur while operating

S: If it occurs within the first five minutes of inserting new batteries, it is normal and the device will resume normal operation soon thereafter. If it occurs for more than 10 minutes, contact your dealer or other authorized service representative for service instructions.

Q: Dark spots on screen.

S: This may be dust on the lens, please clean according to instructions. They may also be Cosmetic blemishes in the intensifier tube which are a by-product of the manufacturing process. This is normal and will not affect the life or performance of the unit.

Q: Image not clear.

S: Adjust focus ring. If problem persists, increase viewing distance

Q: Fixed-pattern noise in a honeycomb shape.

S: Usually a cosmetic blemish characterized by a faint honeycomb-type pattern. This usually occurs when viewing very bright lights. Adjust the potentiometer, to reduce brightness.

Q: A pattern of dark thin lines which look like chicken wire.

S: Turn on illuminator, if purchased. If illuminator doesn't brighten image, replace batteries. If problem persists, contact ATN for service instructions.

2 YEAR PRODUCT WARRANTY

This product is guaranteed to be free from manufacturing defects in material and workmanship under normal use for a period of 2 (two) years from the date of purchase. In the event a defect that is covered by the foregoing warranty occurs during the applicable period stated above, ATN, at its option, will either repair or replace the product, and such action on the part of ATN shall be the full extent of ATN's liability, and the Customer's sole and exclusive remedy. This warranty does not cover a product (a) used in other than its normal and customary manner; (b) subjected to misuse; (c) subjected to alterations, modifications or repairs by the Customer or by any party other than ATN without prior written consent of ATN; (d) special order or "close-out" merchandise or merchandise sold "as-is" by either ATN or the ATN dealer; or (e) merchandise that has been discontinued by the manufacturer and either parts or replacement units are not available due to reasons beyond the control of ATN. ATN shall not be responsible for any defects or damage that in ATN's opinion is a result from the mishandling, abuse, misuse, improper storage or improper operation, including use in conjunction with equipment which is electrically or mechanically incompatible with or of inferior quality to the product, as well as failure to maintain the environmental conditions specified by the manufacturer. **CUSTOMER IS HEREBY NOTIFIED THAT OPERATION OF THE EQUIPMENT DURING DAY-LIGHT HOURS OR UNDER ANY EXCESSIVE LIGHT CONDITIONS MAY PERMANENTLY DAMAGE THE INTERNAL COMPONENTS OF THE UNIT AND SAID DAMAGE WILL NOT BE COVERED UNDER THIS WARRANTY.** This warranty is extended only to the original purchaser. Any breach of this warranty shall be waived unless the customer notifies ATN at the address noted below within the applicable warranty period.

The customer understands and agrees that except for the foregoing warranty, no other warranties written or oral, statutory, expressed or implied, including any implied warranty of merchantability or fitness for a particular purpose, shall apply to the product. All such implied warranties are hereby and expressly disclaimed.

LIMITATION OF LIABILITY

ATN will not be liable for any claims, actions, suits, proceedings, costs, expenses, damages or liabilities arising out of the use of this product. Operation and use of the product are the sole responsibility of the Customer. ATN's sole undertaking is limited to providing the products and services outlined herein in accordance with the terms and conditions of this Agreement. The provision of products sold and services performed by ATN to the Customer shall not be interpreted, construed, or regarded, either expressly or implied, as being for the benefit of or creating any obligation toward any third party of legal entity outside ATN and the Customer; ATN's obligations under this Agreement extend solely to the Customer. **ATN's liability hereunder for damages, regardless of the form or action, shall not exceed the fees or other charges paid to ATN by the customer or customer's dealer. ATN shall not, in any event, be liable for special, indirect, incidental, or consequential damages, including, but not limited to, lost income, lost revenue, or lost profit, whether such damages were foreseeable or not at the time of purchase, and whether or not such damages arise out of a breach of warranty, a breach of agreement, negligence, strict liability or any other theory of liability.**

PRODUCT WARRANTY REGISTRATION

In order to validate the warranty on your product, ATN must receive a completed Product Warranty Registration Card for each unit. Please complete the form below and immediately mail it to our Service Center: ATN Corporation, 20 South Linden Ave., Suite 1B, South San Francisco CA 94080. Products qualifying for warranty repair will be either repaired or replaced within 10 business days of receipt of merchandise unless the customer is notified otherwise.

OBTAINING WARRANTY SERVICE

To obtain warranty service on your unit, take or send the product, postage paid, with a copy of your sales receipt to our service center, ATN Corporation at the address noted above. All merchandise must be fully insured with the correct postage; ATN will not be responsible for improper postage, or, missing or damaged merchandise during shipment.



For customer service and technical support, please contact
American Technologies Network Corp.

North American Office

20 S. Linden Ave. Suite 1B, South San Francisco, CA 94080
phone: 800-910-2862, 650-875-0130; fax: 650-875-0129

European Office

phone: 44(0)870-0111286, fax: 44(0) 845-3349142

The following countries can use our
toll free number 00 800 9102-8620

Austria, France, Germany, Holland, Italy, Spain, Sweden, Switzerland

www.atncorp.com

Free Manuals Download Website

<http://myh66.com>

<http://usermanuals.us>

<http://www.somanuals.com>

<http://www.4manuals.cc>

<http://www.manual-lib.com>

<http://www.404manual.com>

<http://www.luxmanual.com>

<http://aubethermostatmanual.com>

Golf course search by state

<http://golfingnear.com>

Email search by domain

<http://emailbydomain.com>

Auto manuals search

<http://auto.somanuals.com>

TV manuals search

<http://tv.somanuals.com>