

Atлона VGA to HDMI Converter/Scaler

AT-HD500



User Manual

Table of Contents

1. Introduction	3
2. Package Contents	3
3. Features	3
4. Panel Descriptions	
a. Front Panel	4
b. Rear Panel	4
5. OSD Menu	5
6. Laptop Set Up	6
7. Connection and Installation	7
8. Device Reset	7
9. Specifications	8
10. Supported Resolutions	8
9. Safety Information	9
10. Warranty	10
11. Atlona Product Registration	11

Introduction

The Atlona VGA to HDMI converter/scaler can receive VGA signals at VESA resolutions as low as 640x480, convert to HDMI, and scale up to 1920x1200 or 1080p. Audio isn't forgotten, with 3.5mm (L/R analog) and TosLink (digital) inputs, the AT-HD500 outputs analog and digital audio over 3.5mm, TosLink, and HDMI; simultaneously. The Atlona VGA to HDMI Converter w/Scaler is a high quality solution for your legacy devices.

Package Contents

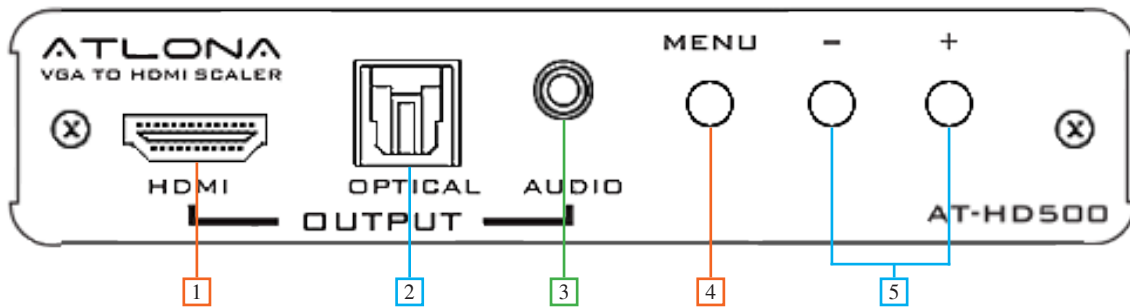
- AT-HD500
- 5v power supply
- User manual

Features

- Scales any VESA resolution from 640x480 up to 1920x1200 (or 1080p)
- Native option adjusts resolution and refresh rate to match the HDMI display's factory default settings.
- Provides output picture adjustment for contrast, brightness, hue, saturation, sharpness, RGB (color tone) level and aspect ratio size.
- Supports VESA resolutions: VGA (640x480), SVGA (600x800), XGA (1024x768), SXGA (1200x1024), UXGA (1600x1200), WXGA (1280x800), WSXGA (1680x1050), WUXGA (1920x1200)
- Supports Video resolutions: 480i, 480p, 576i, 576p, 720p, 1080i and 1080p
- Supports stereo PCM analog/digital audio input and stereo PCM analog/digital output.
- Auto standby mode when no signal is present. Choice between a color bar or a black screen for standby mode through the OSD menu.

Panel Description

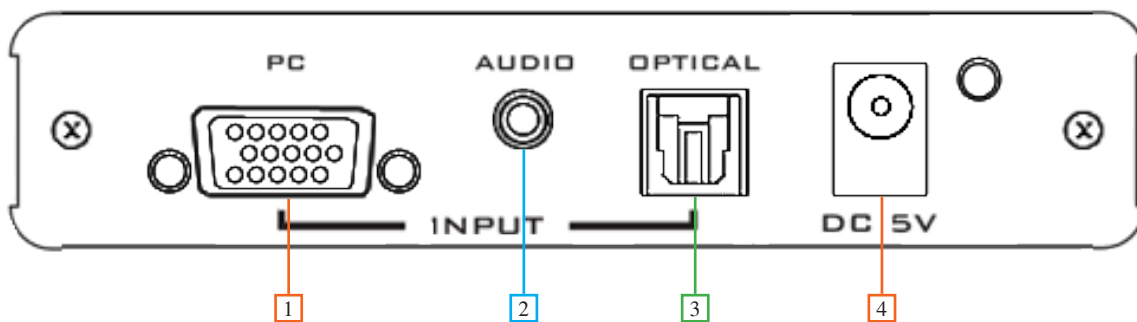
Front Panel



1. HDMI Output: Connect to an HDMI display
2. Optical Output: Connect to a digital audio device
3. Audio Output: Connect to an analog audio device
4. Menu Button: Press the MENU button to bring up OSD operation menu and confirm selections
5. +/- Button: Use the + and - buttons to navigate through the OSD menu.

Note: When not using the OSD menu the "Menu", "+", and "-" buttons have different functions. "-" when pressed will center the image on the screen (fixing many video alignment issues). "Menu" and "-" pressed together will switch the output resolution to 480p. "Menu" and "+" pressed together will switch to 1024x768.

Back Panel



1. PC Input: Connect to a VGA source
2. Audio Input: Connect analog audio from a source device
3. Optical Input: Connect digital audio from a source device.
4. DC 5V Port: Connect the included power supply to this port.

OSD Menu

1st Tier Option	2nd Tier Option	Adjustment
CONTRAST		0 ~ 100 of Contrast Level
BRIGHTNESS		0 ~ 100 of Contrast Level
FINETUNE	- PHASE - CLOCK - H-POSITION - V-POSITION	0 ~ 100 of Phase Level 0 ~ 100 of Clock Level 0 ~ 100 of H-Position Level 0 ~ 100 of V-Position Level
COLOR	- RED - GREEN - BLUE	0 ~ 100 of Red Color Level 0 ~ 100 of Green Color Level 0 ~ 100 of Blue Color Level
SIZE		FULL / OVERSCAN / UNDERSCAN / LETTERBOX / PANSCAN / FOLLOW INPUT
OUTPUT		NATIVE / VGA (640x480) / SVGA (600x800) / XGA (1024x768) / SXGA (1200x1024) / UXGA (1600x1200) / 480i / 480p / 720p@60Hz / 1080i@60Hz / 1080p@60Hz / 576i / 576p / 720p@50Hz / 1080i@50Hz / 1080p@50Hz / WXGA (1280x800) / WSXGA (1680x1050) / WUXGA (1920x1200) / WXGA+ (1680x1050) SXGA+ (1400x1050)
AUDIO	- SOURCE - DELAY - SOUND	L/R / OPTICAL ON / OFF ON / OFF
OSD	- HPOSITION - VPOSITION - TIMER - BACKGROUND - DISPLAY - COLOR BAR	0 ~ 100 of OSD Horizontal Position 0 ~ 100 of OSD Vertical Position 0 ~ 100 of OSD Existing Time (sec.) 0 ~ 100 of OSD Transparent Level Back to 1st Tier INFO / ON / OFF On: Color bar will display when the source is disconnected Off: After the source is disconnected, a black screen will be active for 50 seconds before the output signal is shut off Timeon 15min: Once the source is discontinued, a color bar will be active for 15 minutes before the output signal is shut off
FACTORY RESET	YES	MENU
INFORMATION		SOURCE (Input) INPUT (Resolution) OUTPUT (Resolution) VERSION (Firmware)
MIRROR		ON / OFF
EXIT		Close OSD Menu

Laptop Set Up

VGA ports by default are disabled on most laptops. To enable the port, the function and display buttons would need to be pressed simultaneously. The function button is usually found at the bottom of the keyboard near the "CTRL" and "Alt" buttons. The display button is found among the 12 function buttons at the top of the keyboard.

See picture to the right -->



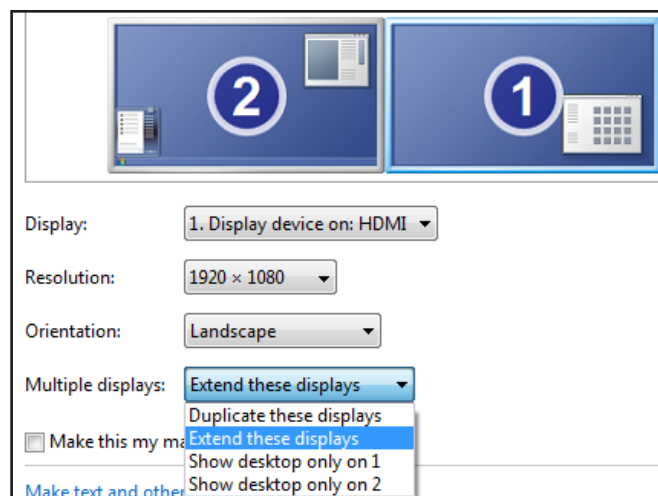
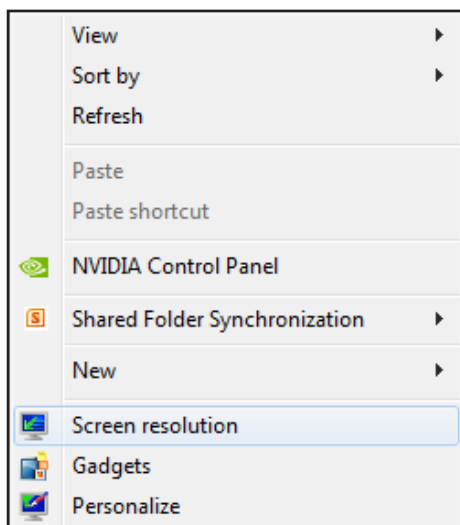
When using two displays on a computer or laptop there are two choices on how content is displayed: Mirrored or Extended.

Mirrored: Duplicates the desktop on both screens, all actions performed on the computer will mirror on the second display.

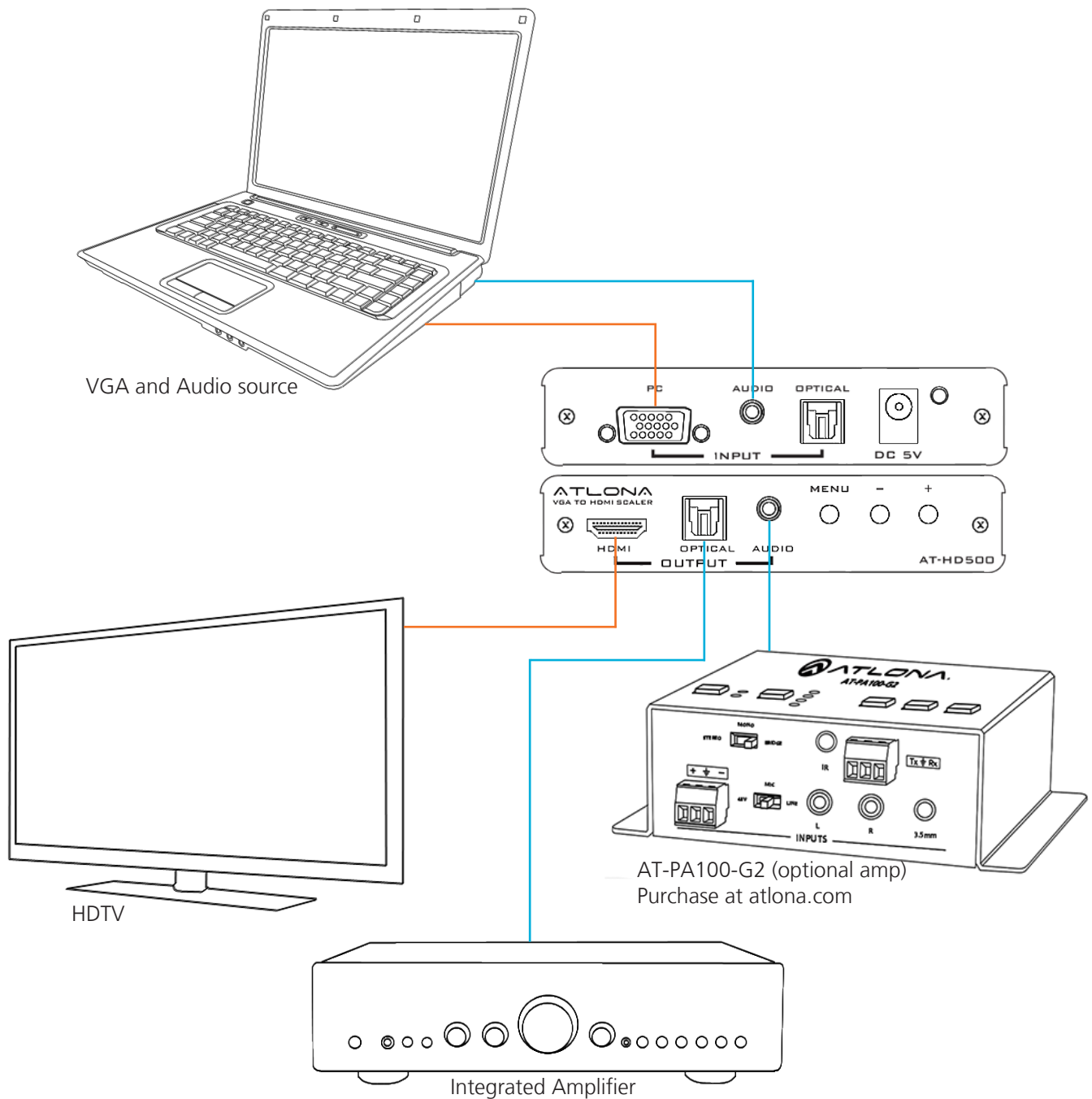
Extended: Be able to drag and drop certain windows and programs from one screen to the other, enabling one screen to have a program running while the other one is running something completely different. (Ex. Play a movie/slideshow on one screen and work on a spreadsheet or document on the other)

To set up multiple displays, you need to right click on the desktop and select the "Screen resolution" option (as seen below). A window will pop up, and if the VGA port was successfully enabled, there will be two displays labeled 1 and 2 (pictured below). From this menu you can choose to duplicate, extend, or even just use one display.

Note: If doing extended mode and you want the second display to be on the left click on the display in the menu and drag it to the left. The displays should read 2 then 1 on the screen (pictured below).



Connection and Installation



Resetting the unit

To reset the HD500 use the following steps:

1. Press and hold the menu button for five seconds
2. While still holding the menu button, unplug the HD500
3. After 5 seconds of holding the menu button while the HD500 is unplugged, plug the HD500 back in.
4. Hold the Menu button for 5 more seconds as the HD500 comes on
5. Release the menu button and the reset is complete

Note: Re-establishing the connection between the source, HD500, and display may take up to a minute after the reset is complete

Specifications

Ports	Inputs 1 x VGA 1 x 3.5mm audio 1 x optical audio	Outputs 1 x HDMI 1 x 3.5mm audio 1 x optical audio
Resolution Outputs	VESA: up to 1920x1200 Video: up to 1080p	
Dimensions (HxWxD)	0.98 x 3.94 x 6.06 (inch) 25 x 100 x 154 (mm)	
Weight	0.75 lbs 0/34 kg	
Operating Temperature	32°F to 118.4°F 0°C to 48°C	

Supported Resolutions

INPUT (VGA)		50	56	60	70	72	75/85
VESA:	640x480			X		X	X
	800x600		X	X		X	X
	1024x768			X	X		X
	1280x1024			X			X
	1600x1200			X			
	1280x800			X			
	1680x1050			X			
	1920x1200			X			
OUTPUT (HDMI)							
VESA:	640x480			X			
	800x600			X			
	1024x768			X			
	1280x1024			X			
	1600x1200			X			
	1280x800			X			
	1680x1050			X			
	1920x1200			X			
VIDEO:	480i			X			
	480p			X			
	576i	X					
	576p	X					
	720p	X		X			
	1080i	X		X			
	1080p	X		X			

Safety Information

Safeguards



To reduce the risk of electric shock, do not expose this product to rain or moisture



Do not modify the wall plug. Doing so will void the warranty and safety features.



If the wall plug does not fit into your local power socket, hire an electrician to replace your obsolete socket.



This equipment should be installed near the socket outlet and the device should be easily accessible in the case it requires disconnection.

Precautions

FCC regulations state that any unauthorized changes or modifications to this equipment, not expressly approved by the manufacturer, could void the user's authority to operate this equipment.

Operate this product using only the included external power supply. Use of other power supplies could impair performance, damage the product, or cause fires.

In the event of an electrostatic discharge this device may automatically turn off. If this occurs, unplug the device and plug it back in.

Protect and route power cords so they will not be stepped on or pinched by anything placed on or against them. Be especially careful of plug-ins or cord exit points from this product.

Avoid excessive humidity, sudden temperature changes or temperature extremes.

Keep this product away from wet locations such as bathtubs, sinks, laundries, wet basements, fish tanks, and swimming pools.

Use only accessories recommended by Atlona to avoid fire, shock, or other hazards.

Unplug the product before cleaning. Use a damp cloth for cleaning and not cleaning fluid or aerosols. Such products could enter the unit and cause damage, fire, or electric shock. Some substances may also mar the finish of the product.

Never open, remove unit panels, or make any adjustments not described in this manual. Attempting to do so could expose you to dangerous electrical shock or other hazards. It may also cause damage to your AT-HD500. Opening the product will void the warranty.

Do not attempt to service the unit. Disconnect the product and contact your authorized Atlona reseller or contact Atlona directly.

Warranty

Limited Warranty

Atlona Technologies warrants that (a) its products (AT-HD500) will perform substantially in accordance with the accompanying written materials for a period of 3 years from the date of receipt and (b) that the product will be free from defects in materials and workmanship under normal use and service for a period of 3 years. In the event applicable law imposes any implied warranties, the implied warranty period is limited to 3 years from the date of receipt. Some jurisdictions do not allow such limitations on duration of an implied warranty, so the above limitation may not apply to customers that fall within those areas.

Customer Remedies

Atlona Technologies' and its suppliers' entire liability and Customer's exclusive remedy shall be, at Atlona Technologies' decision, either return of the price paid for the product, repair, or replacement of the product that does not meet this Limited Warranty and which is returned to Atlona Technologies with a copy of the Customer's receipt. This Limited Warranty is void if failure of the product has resulted from accident, abuse, misapplication, or natural occurrence. In example but not limited to: power surges (electrical storms, local power outage), dropping the product (or items on the product), contact with fluids, and physical misconduct (i.e. kicking or punching). Any replacement product will be warranted for the remainder of the original warranty period.

No other warranties

To the maximum extent permitted by applicable law, Atlona Technologies and its suppliers disclaim all other warranties, either expressed or implied, including, but not limited to, implied warranties of merchantability and fitness for a particular purpose, with regard to the product and any related written materials. This Limited Warranty gives customer specific legal rights. Customers may have other rights depending on the jurisdiction.

No liability for damages

To the maximum extent permitted by applicable law, in no event shall Atlona Technologies or its suppliers be liable for any damages arising out of the use of or inability to use this product, even if Atlona Technologies has been advised of the possibility of such damages. Such damages include but are not limited to: special, incidental, consequential, or indirect damages for personal injury, loss of business profits, business interruption, loss of business information, or any other pecuniary loss. Atlona Technologies' and its suppliers' entire liability under any provision of this agreement shall be limited to the amount actually paid by you for the product. Some Jurisdictions do not allow the exclusion or limitation of liability for consequential or incidental damage. The above limitations may not apply to you in such jurisdictional cases.

Atlona Product Registration

Thank you for purchasing this Atlona product. - We hope you enjoy it and will take an extra few moments to register your new purchase.

Registration creates an ownership record if your product is lost or stolen and helps ensure you'll receive notification of performance issues and firmware updates.

At Atlona, we respect and protect your privacy, assuring you that your registration information is completely secure. Atlona product registration is completely voluntary and failure to register will not diminish your limited warranty rights.

To register go to: <http://www.atlona.com/registration>

Free Manuals Download Website

<http://myh66.com>

<http://usermanuals.us>

<http://www.somanuals.com>

<http://www.4manuals.cc>

<http://www.manual-lib.com>

<http://www.404manual.com>

<http://www.luxmanual.com>

<http://aubethermostatmanual.com>

Golf course search by state

<http://golfingnear.com>

Email search by domain

<http://emailbydomain.com>

Auto manuals search

<http://auto.somanuals.com>

TV manuals search

<http://tv.somanuals.com>