

S3D40 Soundbar Quick Start Guide



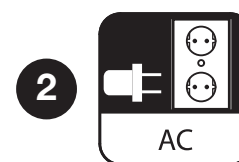
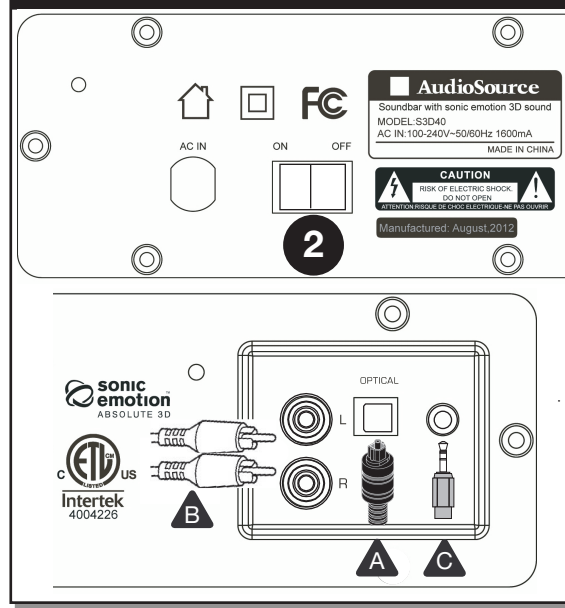
Congratulations on your purchase of the AudioSource® S3D40 Soundbar
The latest in 3D Audio Home Theater technology.

Included in box: S3D40 Sound Bar, Credit Card Style Remote (Battery Included), Product Manual, Quick Start Guide, Input Cable

Installation Sequence

- 1 Connect Source**
A single cable is needed per source.
See table below for common connection types & installation locations.
- 2 Plug power plug into wall outlet**
- 3 Press power button on backpanel to "ON"**
- 4 Press press standby button on top panel**
- 5 Select source**
- 6 Adjust to desired volume**
- 7 Select mode best suited to source**

Rear Panel

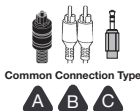


1 Compatible Sources

(Only a single cable is used per source)



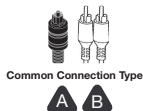
Flat Panel TV



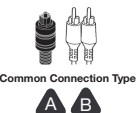
Computer



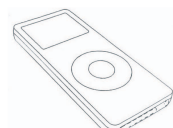
Game Console



CD / DVD Player



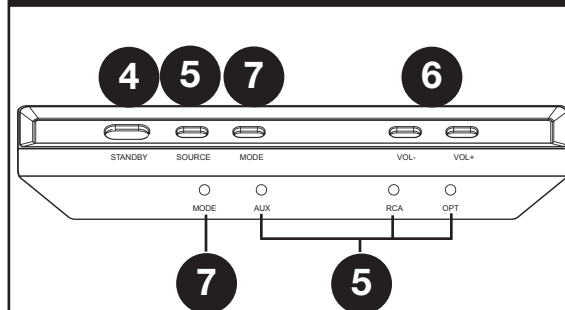
Laptop



MP3 Player / Cell Phone



Front Panel



Free Manuals Download Website

<http://myh66.com>

<http://usermanuals.us>

<http://www.somanuals.com>

<http://www.4manuals.cc>

<http://www.manual-lib.com>

<http://www.404manual.com>

<http://www.luxmanual.com>

<http://aubethermostatmanual.com>

Golf course search by state

<http://golfingnear.com>

Email search by domain

<http://emailbydomain.com>

Auto manuals search

<http://auto.somanuals.com>

TV manuals search

<http://tv.somanuals.com>