

Step 4

General Information About Your Player

Visit our web site at www.MyAudio2Go.com

4.1 Box Contents...



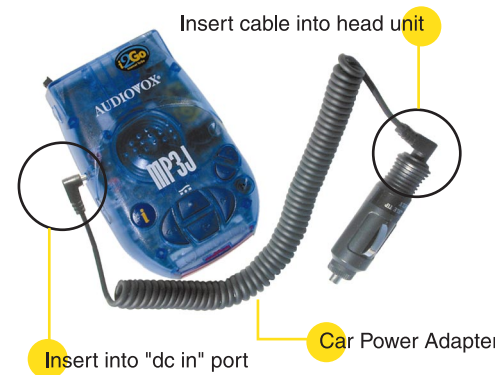
4.2 Accessories...



4.3 Player Car Installation

There are several ways to connect your Player to your Car. The Player comes with a Cassette Adapter to deliver the audio to your car stereo. Optional RF Modulators and FM Transmitters can be purchased so your MP3s can be heard through your car stereo FM tuner. For powering and mounting your Player in your car, you are supplied with a Cigarette Power Adapter, Windshield Mount, and Velcro.

A. The Car Power Adapter has two pieces. The first is the head unit that plugs directly into your car cigarette lighter. A coiled cable is provided that plugs into the head unit. The other end of the cable is plugged directly into the "dc in" port on the Player.



Page 5, Continue to Page 6

4.4 Player Car Installation (continued)

- B. Insert the stereo plug of the cassette adapter into the headphone jack of the Player.
 - C. Insert the cassette adapter into your car's cassette tape player.
 - D. Position the windshield mount and apply pressure to allow the suction cups to secure firmly. Audiovox recommends placement in the center of the windshield to keep from obstructing your view while driving.
 - E. Align the mounting slot in the rear of the Player with the windshield mount and slide on until the unit snaps into place. There is a small button on the rear left side of the Player that when pressed will release the Player from the windshield mount - hold down release button while removing Player from the bracket.
 - F. If the mounting angle of the Player is not adequate, remove the mount from the windshield and gently bend the metal of the mount to improve the angle on the windshield.
- You are now ready to use your MP3J. Audiovox recommends that you set the Player volume at 10 and use the car radio volume control for the best sound. Experiment and find the best settings for you.*

4.5 Important Safety Information & Warranty

ATTENTION: This symbol is intended to alert the user to the presence of important operating and maintenance (servicing) instructions in the literature accompanying the appliance.

Read Instructions: All the safety and operating instructions should be read before the product is operated.
Retain Instructions: The safety and operating instructions should be retained for future reference.
Heed Warnings: All warnings on the product and in the operating instructions should be adhered to.
Follow Instructions: All operating and use instructions should be followed.
Water and Moisture: Do not use this product near water - for example, near a bathtub, wash bowl, kitchen sink, or laundry tub; in a wet basement; or near a swimming pool; and the like.
Object & Liquid Entry: Never push objects of any kind into this product through openings as they may touch dangerous voltage points or short-out parts that could result in a fire or electric shock. Never spill liquid of any kind on the product.
Servicing: Do not attempt to service this product yourself as opening or removing covers may expose you to dangerous voltage or other hazards. Refer all servicing to qualified service professionals.
Heat: The product should be situated away from heat sources such as radiators, heat registers, stoves, or other products that produce heat.

Certification Information
This equipment has been tested and found to comply with the limits for a Class B digital device, pursuant to Part 15 of the FCC Rules. These limits are designed to provide reasonable protection against harmful interference in a residential installation. This equipment generates, uses and radiates radio frequency energy and, if not installed and used in accordance with the instructions, may cause harmful interference to radio communications. However, there is no guarantee that interference will not occur in a particular installation. If this equipment does cause harmful interference to radio or television reception, which can be determined by turning the equipment off and on, the user is encouraged to try to correct the interference by one or more of the following measures:

1. Reorient or relocate the receiving antenna (television, radio, etc.)
2. Increase the separation between the equipment and receiver.
3. Connect the equipment to an outlet on a circuit different from that to which the receiver is connected.
4. Consult the dealer or an experienced radio/TV technician for additional help.

Caution: Changes or modifications not expressly approved by the party responsible for compliance could void the user's authority to operate the equipment. Contact Audiovox Electronics Corporation, 150 Marcus Blvd., Hauppauge, NY 11788. Telephone: 631-231-7750. This device complies with Part 15 of the FCC Rules. Operation is subject to the following two conditions: (1) this device may not cause harmful interference, and (2) this device must accept any interference received, including interference that may cause undesired operation.

4.6 Contact Information & Trademarking

For More Information, please contact:

Customer Support: toll free in the US: (800) 229-1235 or visit www.audiovox.com

i2Go™, "Internet To Go™", "Interact Button™" and MP3Agent™ are all trademarks of i2Go.com and are protected under US and foreign trademark restrictions. All other product and brand names referenced in this manual or at www.i2Go.com may be service marks, trademarks, or registered trademarks of their respective manufacturers. i2Go.com reserves the right to change specifications without notice. Copyright ©1999, 2000 i2Go.com, Inc. All rights reserved.



Page 6

Getting Started...



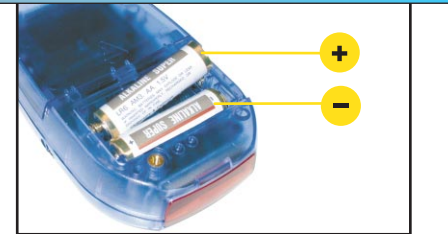
Step 1

Using your Interactive Digital Audio Player!

Visit our web site at www.MyAudio2Go.com

1.1 On the Mark: Installing the batteries

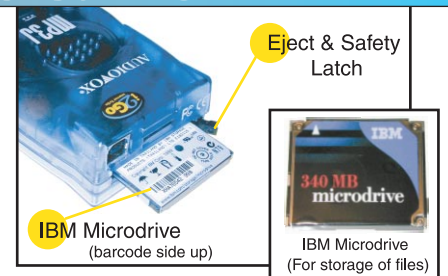
Make sure the batteries are installed in the correct position as shown:



* Batteries Not Included - (2) AA Required

1.2 Get Set: Insert the IBM Microdrive™

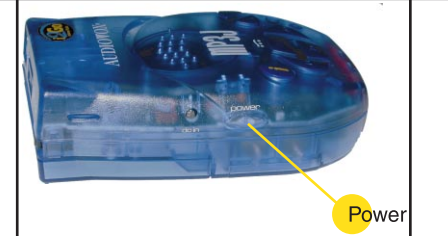
Insert the Microdrive into the back of the Player. The drive must be inserted with the IBM Microdrive label facing toward the bottom of the Player and the barcode on the Microdrive facing up. Once the Microdrive is fully inserted, secure safety latch by folding the latch to the side.



Do NOT remove the IBM Microdrive until you power off the Player.

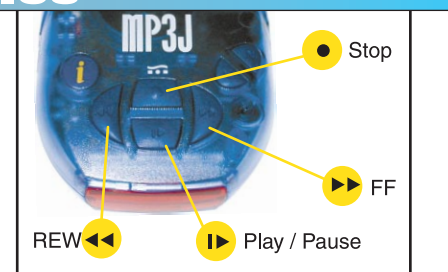
1.3 Go: Power Up

Press and hold the "Power" button until the Player powers up. On the display, you will see "Hello". When running on batteries, if left on, the display will go into power save mode. Tap the "Power" button to wake up the display.



1.4 Time to Play: Listen to Files

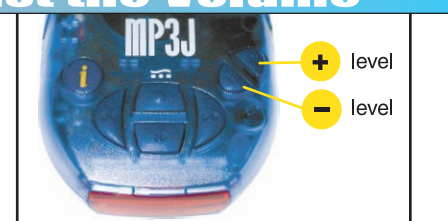
Push the "Play/Pause" button to play any audio content downloaded to the IBM Microdrive. The filename will appear on the display. You can push the "Play/Pause" button to pause playback. To navigate between MP3 files, press the "FF" and "REW" buttons to listen to the next or previous MP3 file.



**You can load or delete audio content to the microdrive from your computer using the MP3Agent once you have completed the installation instructions that follow.*

1.5 Finishing Touches: Adjust the Volume

Adjust the volume using the "+" and "-" buttons.



Page 1, Continue to Page 2

MP3J

MP3J

Step 2

Learning All About Your Player

Visit our web site at www.MyAudio2Go.com

2.1 Your Player...

Power
Hold Power in for a few seconds to turn your Player On or Off

"Interact Button"
Press the "Interact Button" once to reach your settings menu. To record a memo, reply to an email, or interact to content during playback, hold the "Interact Button" down until the display indicates "Recording" or "Interact".

Rewind
Hold down to Rewind the file/song (3x speed, 10x after 3 seconds). Use to scroll through folders, menus, or files when navigating.

Back of Player

Mounting Slot
For use with windshield mount.

Accessory Connector

Memory Card Slot
Insert IBM Microdrive label faced down.

Eject/Safety Latch
Use to remove or secure Microdrive. Do not eject or insert the Microdrive when Player is powered on.

USB Port
Connect Player to PC using USB Cable.

Level
Use to increase volume, treble or bass levels / Use to turn settings on or scroll through settings.

Level
Use to decrease volume, treble or bass levels / Use to turn settings off or scroll through settings.

Fast Forward
Hold down to Fast Forward through a file/song (3x speed, 10x after 3 seconds) / Use to scroll through folders, menus, or files when navigating.

Play / Pause
Press once to select a folder or file. Once a file has been selected, press again to play. Press while playing to pause.

Stop
Press to stop playback. When not playing a file, press to navigate up to a top level menu or folder.

2.2 Navigate your Player: Folders

The A/ denotes Drive A for the IBM Microdrive.

Audio
is a general folder for placing files on your Player that are not organized into folders in the MP3Agent.

Playlists
are created with the MP3Agent to organize your files.

i2Go.com
contains downloaded content from an i2Go enabled web site.

Outbox
stores your memos and e-mail replies.

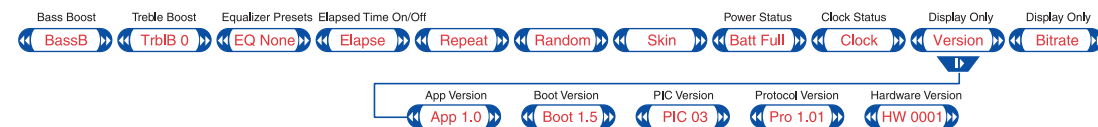
Inbox
contains any downloaded e-mails.

These folders will be created as needed by the MP3Agent Software.

Page 2, Continue to Page 3

2.3 Navigate your Player: Settings

Press the "Interact Button" to enter into the Settings menu. Use the "Rewind" or "Fast Forward" button to scroll through the settings. To turn a feature On or increase a feature's level, press the "+" button. To turn a feature Off or reduce a feature's level, press the "-" button.



- BassB:** is the bass boost. The user may control the level of the bass boost from 0 to 9.
- TribB:** is the treble boost. The user may control the level of the treble boost from 0 to 3.
- EQ:** allows the user to control which preset equalization they would like to listen to. The options are: None, Jazz, Rock, Flat Pop, Concert, Vocals, Earbud and Distortion.
- Elapse:** indicates the amount of time the selected digital audio file has been playing.
- Repeat:** takes the selected digital audio file and repeats it upon completion.
- Random:** plays the digital audio files in the selected folder or playlist in random order.
- Skin:** plays short sound clips that indicate specific functions are being performed.
- Pow/Batt:** indicates the power source. Your Player can be powered by a DC source, the USB connection, or by the Batteries. If the source is the battery, then the battery level will be indicated.
- Clock:** allows the user to turn the clock on or off. The clock is automatically set when the Player is connected to the PC via the USB cable and the MP3Agent software is running. You may also set the time to read military time. This can be done when turning on the clock by using the "+" button and setting the display to "M CLOCK".
- Version:** refers to the firmware version inside your Player. You can upgrade by downloading the newest firmware release from www.MyAudio2Go.com.
- Bitrate:** is the compression rate used when the selected digital audio file was created.

Step 3

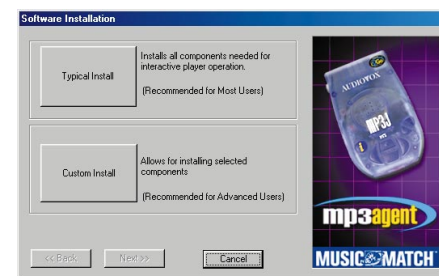
Installing MP3Agent™ Software

The MP3Agent CD-ROM is compatible with computers running Windows 98 or 2000. If you are running Windows NT, USB is not supported.

Do NOT plug your Player into your PC with the USB cable until directed to in Step 3.2

3.1 Install MP3Agent Software

- Insert the MP3Agent CD-ROM into your PC. The installer will automatically start. If the installer does not start automatically, go to the Start Menu and select "Run". Type "D:\setup.exe" and click "OK".
(If D: is not your CD-ROM / DVD-ROM, use the appropriate drive letter).
- Select "Typical Install". Follow the on-screen directions to complete the installation.



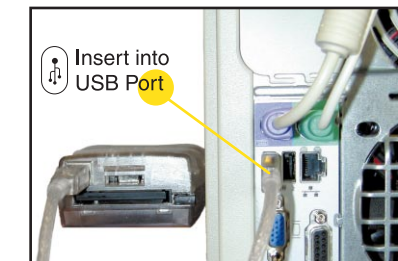
Typical Install will install the i2Go MP3Agent software, the Text-to-Speech Engine, DigitalVoices (Converts your Email to digital audio), and MusicMatch software (to play MP3 files on your desktop and convert your CDs to MP3). If you select "Custom Install", you can choose which software components you wish to install.

MP3J

Page 3, Continue to Page 4

3.2 Connect your Player to your PC

Once the MP3Agent software is installed, you may connect your Player to your PC using the USB cable. Insert the flat end of the USB cable into the PC and the square end of the cable into the rear of the Player.



The MP3Agent software must be installed prior to connecting your Player to the USB Port.

3.3 Launch the MP3Agent Software

On your desktop you will find a shortcut icon to the MP3Agent software. Double-click on the shortcut to launch the MP3Agent.



You can create playlists, manage MP3 files, select and schedule content to be downloaded from the web. Get news, sports, financial, weather, music and more from www.MyAudio2Go.com downloaded directly to your Player every day automatically.

3.4 Loading Up Your Player Via USB or CF Adapter

- Connect your Player via USB.
- Start the MP3Agent software from the icon on desktop.
- Drag and drop digital audio files from anywhere on your desktop or from within your MP3Agent explorer tree to the "Audio" folder. "Audio" can be found under "Portable Players" in the MP3Agent explorer tree.

3.5 Using Playlists

- Within the MP3Agent, right click the "Playlist" icon. This icon is beneath your "Interactive Player" icon.
- Select "Create Playlist" and type in name for your playlist. Click "OK".
- Repeat as desired.
- Drag and drop digital audio files directly onto the playlist icons you just created.
- Select the playlist icon to display the contents.
- Click and drag files to change the order.

3.6 Signing In and Online Help

In order to take advantage of our online service you must go to www.MyAudio2Go.com and sign in. To sign in for the first time, select "Sign In" on the MyAudio2Go.com homepage. A login screen will appear and you should select "New User". Follow the onscreen directions to start an account. An email will be sent to you confirming your login and password for future use.

See online help for instructions on how to:

- Use the "Interact Button" as your mobile link to the Internet (bookmarking, e-commerce and e-mail).
- Configure your Player for e-mail.
- Download Audio Programs and content from www.MyAudio2Go.com.
- Upgrade your Player and MP3Agent.
- Record Memos.
- Format your IBM Microdrive.
- Find Hardware and Software FAQs.
- Learn more about Player battery life.
- Learn how to perform advanced car installation.

For detailed directions on use of your Player, MP3Agent software, or upgrading your Player, visit the Help menu at www.MyAudio2Go.com.

Page 4, Continue to Page 5

Free Manuals Download Website

<http://myh66.com>

<http://usermanuals.us>

<http://www.somanuals.com>

<http://www.4manuals.cc>

<http://www.manual-lib.com>

<http://www.404manual.com>

<http://www.luxmanual.com>

<http://aubethermostatmanual.com>

Golf course search by state

<http://golfingnear.com>

Email search by domain

<http://emailbydomain.com>

Auto manuals search

<http://auto.somanuals.com>

TV manuals search

<http://tv.somanuals.com>