



**AUDIOVOX<sup>®</sup>**  
**ELECTRONICS CORP.**

**P**ersonal **V**ideo **R**ecorder  
PVR1000  
Owner's Manual

128-7114

# WARNINGS

## CAUTION

Keep product out of direct sunlight. Exposure to direct sunlight or extreme heat may cause damage or malfunction.

To prevent fire or shock hazard, do not expose to rain or moisture.

## CAUTION WHILE DRIVING

Use of headphones while operating an automobile or moving vehicle is not recommended. Be careful and attentive on the road. Stop operation of the unit if you find it disruptive or distracting while driving.

## IMPORTANT BATTERY INFORMATION

The battery used in this unit may present a risk of fire or chemical burn if not used as directed. Do not separate, recharge, disassemble, or heat above 100C (212F).

Battery replacement should be performed by qualified technicians.

Do not attempt to open the unit. No user serviceable parts inside.

Keep the unit away from children. Do not disassemble or dispose product in fire.

Use only the specified chargers which were packaged with the product. Use of a different charger may present a risk of fire or explosion.

Keep the charger plugged in to the unit for at least 30 minutes before attempting to operate unit if battery is completely run down and is insufficient to power up unit.

# **T**able of Contents

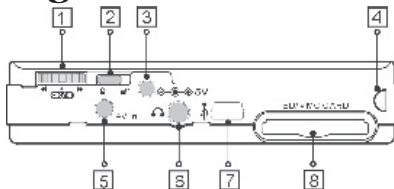
<b>First Time Use &gt;&gt;</b> -----	<b>4</b>
<b>Identifying the Parts &gt;&gt;</b> -----	<b>5</b>
<b>Software Installation &gt;&gt;</b> -----	<b>7</b>
<b>Synchronizing Files between PC and PVR &gt;&gt;</b> -----	<b>8</b>
Converting and Transferring Files >>-----	<b>8</b>
Mass Storage Mode >>-----	<b>9</b>
<b>Disconnecting the PVR from your COMPUTER&gt;&gt;</b> -----	<b>10</b>
<b>OSD Menu &gt;&gt;</b> -----	<b>12</b>
A. Photo Player >>-----	<b>13</b>
B. Video Player >>-----	<b>16</b>
C. Voice Player >>-----	<b>19</b>
D. MP3 Player >>-----	<b>23</b>
E. AV Recorder >>-----	<b>27</b>
F. Slide Show >>-----	<b>29</b>
G. Calendar >>-----	<b>30</b>
H. Game >>-----	<b>33</b>
I. Setup Menu >>-----	<b>35</b>
<b>Direct Print &gt;&gt;</b> -----	<b>37</b>
<b>Specifications &gt;&gt;</b> -----	<b>40</b>

# **F**irst Time Use

Thank you for purchasing this product. This multi-function portable Personal Video Recorder (PVR) enables you to:

- Play MPEG-4 videos
- View JPEG images
- Record digital videos
- Record digital audio
- Listen to MP3 files
- Use it as an USB Portable Disk
- Use it as a SD/MMC card reader
- Record TV shows (MPEG 4 compatible ASF file format)
- Print photos directly without attaching to a PC (DPS-ready)
- Use it as an alarm clock
- Convert multiple video file formats into MPEG4 compatible ASF format

# Identifying the Parts



## 1. Function Scroller

*[Play/Pause]* : Press the center button of the scroller to start or pause the playing in Video/Voice/MP3 Player Mode.


Note: The center button of the scroller serves as the OK button on the PVR front panel. You may press the OK button when you have to press the center button.

*[Previous/Next]* : Scroll up/down and release the scroller to go to previous/next item in Photo/Video/Voice/MP3 Player Mode.

*[F.Fwd/F.Bwd]* : Scroll up/down and hold the scroller to speed up the playing of advancing/reversing in Video/Voice/MP3 Player Mode.

*[Volume Up/Down]* : Press the ● button and then scroll up/down to adjust the volume during playback in Video/Voice/MP3 Player mode.

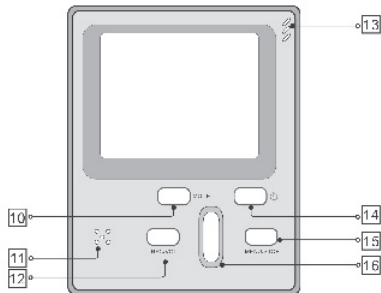
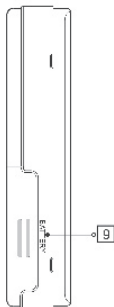
## 2. Hold

Switch to  /  to lock/unlock the buttons (including the scroller) on the PVR.

## 3. DC IN jack

*[Power Supply]* : Connect the power adapter to DC IN jack while using PVR.

*[Charge]* : Connect the power adapter to DC IN jack to charge the battery.



**4. Strap Holder**

**5. AV IN jack**

Connect the AV cable to this AV IN jack while recording TV programs.

**6. Earphone jack**

**7. USB port**

**8. SD/MMC CARD slot**

**9. Battery Cover**

**10. Mode button**

Press the Mode button to switch to different modes.

**11. Speaker**

**12. Record/Vol button**

**13. Microphone**

A built-in microphone for voice record.

**14. Power button**

**15. Menu/Stop button**

Use this button to call up the menu under each mode.

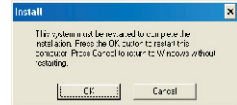
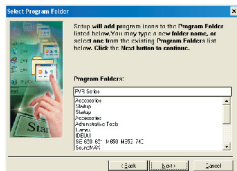
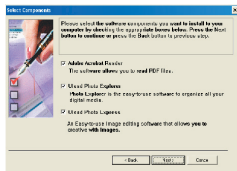
**16. Play/Pause/OK button**

**6 PVR USER GUIDE**

# Software Installation

The installation CD bundled with the PVR contains all the necessary software and useful information (PVR User Guide PDF) you need before operating PVR. Please follow the instructions below to complete the software installation.

1. Insert the Installation CD into CD-ROM. The **Select Language** dialog box appears.
2. Select your preferred language and click “OK” to continue.
3. A **Welcome** dialog box appears. Click “Next”.
4. The **Select Components** dialog box appears. Click and select the software you want to install and then click “Next”.
5. The **Select Program Folder** dialog box appears telling you that setup program is about to add a program icon to your system, you can change the folder name listed in the text box, or simply click “Next” to continue.
6. The **Start Copying Files** dialog box appears confirming that the listed software will be installed. Click “Next” to continue.
7. Follow the on-screen instructions to continue and complete the installation.

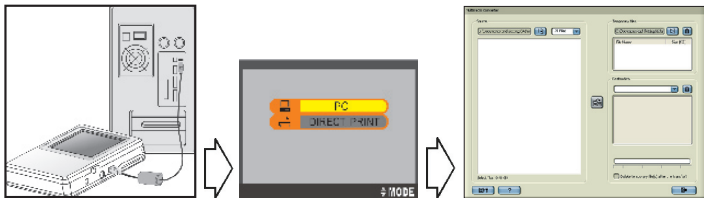





# Synchronizing files between PC and PVR

## Converting and Transferring Files

To synchronize the files between a PC and your PVR, read and follow the instructions below.

1. Power on the PVR. Connect the PVR to the computer with the USB cable provided in the package. The following appears. Then the Multimedia Converter dialog box appears.



2. Press  **Browse** button to select the path where your files reside. The files will be listed as thumbnails in the **Source** field.
3. Press  **Browse** button to select the path where you temporary files will reside before uploading to PVR.
4. Press  **Convert** button. The conversion starts.

Note: The Multimedia Convert program is for Windows98 SE/ME/2000/XP only.



5. The Convert Progress dialog box appears listing the conversion detail. To cancel the conversion, press  button to stop.

## Mass Storage Mode

### **For IBM-PC Compatible Users**

Connect your PVR to a computer and extra disk drive (USB Portable Disk) will appear. Your PVR is now in Mass Storage Mode. In this mode, you can copy, move or delete files (pictures) exactly the way you manipulate files in Windows user interface.

Note: Do not put the files you want to play on the PVR via Mass Storage Mode. For those files you want to play on the PVR, use only the **Multimedia Converter** to convert and upload.

### **For MAC Users**

(Mac OS: 9.x and 10.1 above)

By connecting your PVR to a MAC computer (refer to the previous page), it will automatically detect Mass Storage drive. You can easily manipulate your files the way you do in MAC user interface.

# Disconnecting the PVR from your Computer

We strongly recommend you disconnect the PVR from your computer when it is not in use.

## Windows XP

1. Click “Safely Remove Hardware” (  ) icon in the taskbar.
2. Select Safely remove USB Mass Storage Device from the menu.



## Windows 2000/ME

1. Click “Unplug or Eject Hardware” (  ) icon in the taskbar.
2. Select “Stop USB Mass Storage Device” from the menu (Windows 2000).  
Select “Stop USB Disk” from the menu (Windows ME).



## Windows 98SE


1. In My computer, right click on the removable disk corresponding to the player.
2. Select “Eject” from the menu.

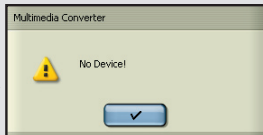


## Mac OS 9.1 and 10.X above

1. Select the player icon (shown as ‘NO\_NAME’ or ‘untitled’ drive) on the desktop.
2. Drag and drop the drive to the Trash.

## Note:


- If the PVR is not connected to your PC while opening the Multimedia Converter program, a “no device” dialog box will appear, simply click  to continue. The program will launch and all the converted file(s) will be saved and placed in the temporary folder.



Once the PVR is connected to your PC, the previously converted files will then automatically be uploaded to the PVR.

- If you don't want to keep the files on your PC for backup, check the option “*delete temporary file(s) after the transfer?*”, then the files saved in the temporary files folder will be deleted after uploading to PVR.
- The Destination window will be disabled if there is no PVR connected.

If the PVR is connected to your PC, you will see 4 folders labeled PHOTO, VIDEO, AUDIO and MP3 in this window. The folders are automatically built by the system. All the converted files will be sorted and saved to these folders according to their type.

- To delete the files in PVR, select the file in the Destination window and then click  .

## **O**SD Menu

Apply power to the PVR and a startup screen appears, then the OSD (on-screen display) menu comes up. The OSD menu contains 9 categories. Each of them provides different functions for users to select. We will introduce how to use the versatile PVR via OSD menu.

Before operating the PVR, please read the following points:

- All the files (.asf/.jpg/.mp3/.wav) to be played on the PVR must be converted by Multimedia Converter first.
- The PVR has internal memory, if you want to save the file in the internal memory, do not insert external memory card. If an external memory card is inserted in the PVR, only the external memory can be read.
- For better playback speed and viewing quality, all the photos converted by Multimedia Converter will be resized to 640 x 480 pixels to fit the PVR screen resolution.
- The PVR calendar can record the date up to the year 2036.
- The timer record and alarm clock setting can be preset within 24 hours.
- Only one song can be set for alarm clock music. If you pick up a song in AUDIO menu and pick up another song in MP3 menu, the system will only choose the most up-to-date one for alarm clock music.
- It's strongly recommended to turn off the LCD display and plug in the AC adapter while using the PVR for timer record.
- When you choose to format the data in the built-in memory, do not insert a memory card in the PVR, otherwise PVR will erase the data in the memory card instead.

## A. Photo Player

---







To view photos, you have to enter Photo Player category. In this category you can review photos, record voice clip, add special effects to photos and more.





To enter the Photo Player  category:



Press OK button or press the center button of the scroller.

- Scroll up/down the scroller to select previous/next photo
- Press OK button to magnify/shrink the selected photo
- Press **■** MENU button to enter the Photo Menu. To exit the menu, press **■** MENU again

The Photo menu contains the following:

 /  <b>Display</b>	 <b>MULTIPLE</b> /  <b>SINGLE photo display</b> Press OK button to enter Display setting. Scroll up/down to select the preferred setting and press the center button of the scroller to confirm.
 <b>Attach Voice</b>	Scroll down and press the center button of the scroller to enter Attach Voice setting. A <b>●RECORD</b> message will show on the bottom of the screen. Scroll up/down to select the photo you want to attach voice narration and press the <b>● RECORD</b> button to start recording. A <b>● REC.</b> icon will then show on the top of the screen. To stop recording, press <b>■</b> STOP button.  When the recording completes, a  icon will appear on the photo to which the voice narration has been attached.

	<p>To view the photo with recorded voice, press <b>■</b> MENU button and scroll down to select  and then press the center button. Scroll up/down to select the photo attached with voice narration and press <b>▶  </b> button to play.</p> <p>To return to a normal play without recorded voice, press <b>■</b> MENU button again and scroll down to select  and then press the center button to confirm.</p>
 <b>Effects</b>	<p><b>NEG. ART/SEPIA/B&amp;W/MOSAIC/NORMAL</b></p> <p>Scroll down and press the center button of the scroller to enter Effects setting. Scroll up/down to select your preferred effect and then press the center button to confirm. PVR will then apply the effect to the selected photo. Once the effect has applied, it can't be cancelled or restored to the previous mode.</p>
 <b>Information</b>	<p><b>ON/OFF</b></p> <p>Scroll down and press the center button of the scroller to enter Information setting.</p> <p>Scroll up/down to select either to enable or disable the information display and then press the center button of the scroller to confirm.</p> <p>When the information display is disabled, there won't be any indicators or key instructions shown on the screen (except low-battery indicator ).</p>


 <b>Delete One</b>	Scroll up/down and press the center button of the scroller to select a photo you want to delete. Press ■ MENU button and scroll to "Delete One". Press the center button of the scroller to enter Delete One setting. A message will prompt asking if you want to delete the photo, press the center button of the function scroller to delete. Otherwise you may press ■ STOP button to cancel.
 <b>Delete All</b>	Scroll down and press the center button of the scroller to enter Delete All setting. A message will prompt asking if you want to delete all the photos in this folder, press the center button of the scroller to delete all. Otherwise press ■ STOP button to cancel.








## B. Video Player

---

In this category you can play videos.










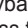




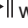
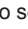

To enter the Video Player category:



Press the MODE button or scroll down the scroller to select  and then press the center button of the scroller to enter.

- Scroll up/down the scroller to select previous/next video
- Press  button to start playing video
- Press  button to stop playing during playback
- Scroll up/down and hold the scroller to speed up the playing of advancing/reversing during playback. To return to the normal play, release the scroller.
- Scroll up/down and release the scroller to go to previous/next video clip during playback.
- Press  button to pause the playing during playback
- Press the  button and scroll up/down the scroller to adjust the volume during playback. Press  button again to complete the volume adjustment.
- Press  MENU button to enter the Video Menu. To exit the menu, press  MENU button again

The Video menu contains the following:



 <b>Display</b>	<p> <b>MULTIPLE</b> /  <b>SINGLE</b> video display</p> <p>Press the center button of the scroller to enter Display setting. Scroll up/down to select the preferred setting and press the center button of the scroller to confirm.</p> <p>Note: Only the first frame will be displayed here.</p>
 <b>Repeat</b>	<p> <b>NORMAL</b> /  <b>ONE</b> /  <b>ALL</b> /  <b>A-B</b></p> <p> <b>To repeat one:</b> Scroll up/down and press the center button of the scroller to select a video you want to repeat playback. Press  MENU button and scroll to "ONE". Press the center button of the scroller to start. The selected song will then be repeated playing back.</p> <p>To return to a normal play, select NORMAL in Repeat setting.</p> <p> <b>To repeat A-B:</b> Scroll down and press the center button of the scroller to enter Repeat setting. Scroll to "A-B" and press the center button of the scroller to confirm. Press  MENU button to exit.</p> <p>Scroll up/down to select a video you want to review. Press  button to start the playback. The  button will be labeled "SET A" at this time, press the button to set the start point of the repeat playback. The  will then be labeled "SET B", press  button again to set the end of the playback. The video will be repeated playing back between point A and B. To cancel the playback, press  to stop.</p>

	<p>↻ <b>To repeat all:</b> Scroll down and press the center button of the scroller to enter Repeat setting. Scroll to “ALL” and press the center button of the scroller to confirm. Press ■ MENU button to exit. Press ▶   button to start the playback. The videos will be repeated playing back from the first one to the last endlessly.</p> <p>To return to a normal play, select NORMAL in Repeat setting.</p>
<p> <b>Information</b></p>	<p><b>ON/OFF</b></p> <p>Scroll down and press the center button of the scroller to enter Information setting.</p> <p>Scroll up/down to select either to enable or disable the information display and then press the center button of the scroller to confirm.</p> <p>When the information display is disabled, there won't be any indicators or key instructions shown on the screen (except low-battery indicator ).</p>
<p> <b>Delete One</b></p>	<p>Scroll up/down and press the center button of the scroller to select a video you want to delete. Press MENU button and scroll to “Delete One”. Press the center button of the scroller to enter Delete One setting. A message will prompt asking if you want to delete the video, press the center button of the scroller to delete. Otherwise you may press ■ STOP button to cancel.</p>




### Delete All

Scroll down and press the center button of the scroller to enter Delete All setting. A message will prompt asking if you want to delete all the videos in this folder, press the center button of the scroller to delete all. Otherwise press ■ STOP to cancel.

## C. Voice Player
















In this category you can listen to WAV music, choose a song for alarm clock music, or add sound effects.

To enter the Voice Player category:



Press the MODE button or scroll down the scroller to select  and then press the center button of the scroller to enter.

- Scroll up/down the scroller to select previous/next song
- Press ►|| button to start playing music
- Press ■ button to stop playing during playback
- Scroll up/down and hold the scroller to speed up the playing of advancing/reversing during playback. To return to the normal play, release the scroller.
- Scroll up/down and release the scroller to go to previous/next audio clip during playback.
- Press ►|| button to pause the playing during playback
- Press ● button to start recording audio clip (.wav file)
- Press ● button and scroll up/down the scroller to adjust the volume during playback. Press ● button again to complete the volume adjustment.
- Press ■ MENU button to enter the Voice Menu. To exit the menu, press ■ MENU again

The Voice menu contains the following:

<p> <b>Quality</b></p>	<p><b>LP  LOW QUALITY / SP  HIGH QUALITY</b></p> <p>Press the center button of the scroller to enter Quality setting. Scroll up/down to select the preferred setting and press the center button of the scroller to confirm.</p>
<p> <b>Search</b></p>	<p>Scroll down and press the center button of the scroller to select Search.</p> <p>Press  button, the search starts. The PVR will play each of the songs in this folder for 5 seconds.</p>
<p> <b>Repeat</b></p>	<p> <b>NORMAL/</b>  <b>ONE/</b>  <b>ALL/</b>  <b>A-B</b></p> <p> <b>To repeat one:</b> Scroll up/down and press the center button of the scroller to select a song you want to repeat. Press  MENU button and scroll to "ONE". The selected song will then be repeated.</p> <p>To return to a normal play, select NORMAL in Repeat setting.</p> <p> <b>To repeat all:</b> Scroll down and press the center button of the scroller to enter Repeat setting. Scroll to "ALL" and press the center button of the scroller to confirm. Press  MENU button to exit. Press  button to start the playback. All the songs will be repeated from the first one to the last continuo sly.</p> <p>To return to normal play, select NORMAL in Repeat setting.</p>

	<p>↻ <b>To repeat A-B:</b> Scroll down and press the center button of the scroller to enter Repeat setting. Scroll to "A-B" and press the center button of the scroller to confirm. Press ■ MENU button to exit.</p> <p>Scroll up/down to select a song you want to listen. Press ▶   button to start the playback. The ▶   button will be labeled "SET A" at this time, press the button to set the start point of the repeat playback. The ▶   will then be labeled "SET B", press ▶   button again to set the end of the playback. The song will be repeated playing back between point A and B. To cancel the playback, press ▶   to stop.</p>
<p>🔔 <b>Alarm Clock</b></p>	<p>Scroll up/down and press the center button of the scroller to select a song. Press ■ MENU button and scroll to Alarm Clock setting and then press the center button of the scroller to enter. Again, press the center button of the scroller to set the time. Scroll up/down to set the HOUR and then press the center button of the scroller to confirm and continue. Scroll up/down to set the <b>MINUTE</b> and then press the center button of the scroller to confirm and continue. Scroll up/down to set the <b>SECOND</b> and then press the center button of the scroller to confirm.</p> <p>Scroll down to <b>SAVE</b> and press the center button of the scroller to keep the setting.</p>


<p>EQ EQ</p>	<p><b>BASS/ROCK/JAZZ/CLASSIC/POP/NORMAL</b> Scroll down and press the center button of the scroller to enter EQ (equalizer) setting. Scroll up/down to select the preferred setting and press the center button of the scroller to confirm.</p>
<p> <b>Delete One</b></p>	<p>Scroll up/down and press the center button of the scroller to select a song you want to delete. Press MENU button and scroll to "Delete One". Press the center button of the scroller to enter Delete One setting. A message will prompt asking if you want to delete the song, press the center button of the scroller to delete. Otherwise press ■ STOP button to cancel.</p>
<p> <b>Delete All</b></p>	<p>Scroll down and press the center button of the scroller to enter Delete All setting. A message will prompt asking if you want to delete all the songs in this folder, press the center button of the scroller to delete all. Otherwise press ■ STOP to cancel.</p>

## D. MP3 MP3 Player

---











In this category you can play MP3 music, select choose a song for alarm clock, add sound effects and more.

To enter the MP3 Player category:

Press the MODE button or scroll down the scroller to select  and then press the center button of the scroller to enter.



- Scroll up/down the scroller to select previous/next song
- Press ►|| button to start playing music
- Press ■ button to stop playing during playback
- Scroll up/down and hold the scroller to speed up the playing of advancing/reversing during playback. To return to the normal play, release the scroller.
- Scroll up/down and release the scroller to go to previous/next song during playback.
- Press ►|| button to pause the playing during playback
- Press ● button and scroll up/down the scroller to adjust the volume during playback. Press ● button again to complete the volume adjustment.
- Press ■ MENU button to enter the MP3 Menu. To exit the menu, press ■ MENU again

The MP3 menu contains the following:

 <b>Alarm Clock</b>	<p>Press the center button of the scroller to enter Alarm Clock setting.</p> <p>Press the center button of the scroller to set the time. Scroll up/down to set the <b>HOUR</b> and then press the center button of the scroller to confirm and continue.</p> <p>Scroll up/down to set the <b>MINUTE</b> and then press the center button of the scroller to confirm and continue.</p> <p>Scroll up/down to set the <b>SECOND</b> and then press the center button of the scroller to confirm.</p> <p>Scroll down the scroller to "<b>SAVE</b>" and press the center button of the scroller to keep the setting.</p>
 <b>Search</b>	<p>Scroll down and press the center button of the scroller to select Search.</p> <p>Press  button, the search starts. The PVR will play each of the songs in this folder for 5 seconds.</p>
 <b>Repeat</b>	<p> <b>NORMAL</b> /  <b>ONE</b> /  <b>ALL</b> /  <b>A-B</b></p> <p> <b>To repeat one:</b> Scroll up/down and press the center button of the scroller to select a song you want to repeat listening. Press  MENU button and scroll to "ONE". The selected song will then be repeated playing back.</p> <p>To return to a normal play, select NORMAL in Repeat setting.</p>



	<p>↻ <b>To repeat all:</b> Scroll down and press the center button of the scroller to enter Repeat setting. Scroll to "ALL" and press the center button of the scroller to confirm.</p> <p>Press ■ MENU button to exit. Press ▶   button to start the playback. All the songs will be repeated playing back from the first one to the last endlessly.</p> <p>To return to a normal play, select NORMAL in Repeat setting.</p> <hr/> <p>↻ <b>To repeat A-B:</b> Scroll down and press the center button of the scroller to enter Repeat setting. Scroll to "A-B" and press the center button of the scroller to confirm.</p> <p>Press ■ MENU button to exit.</p> <p>Scroll up/down to select a song you want to listen. Press ▶   button to start the playback. The ▶   button will be labeled "SET A" at this time, press the button to set the start point of the repeat playback. The ▶   will then be labeled "SET B", press ▶   button again to set the end of the playback. The song will be repeated playing back between point A and B. To cancel the playback, press ▶   to stop.</p>
EQ EQ	<p><b>BASS/ROCK/JAZZ/CLASSIC/POP/NORMAL</b></p> <p>Scroll down and press the center button of the scroller to enter EQ (equalizer) setting. Scroll up/down to select the preferred setting and press the center button of the scroller to confirm.</p>

 <b>Delete One</b>	Scroll up/down and press the center button of the scroller to select a song you want to delete. Press MENU button and scroll to "Delete One". Press the center of the scroller or press OK button to enter Delete One setting. A message will prompt asking if you want to delete the song, press the center button of the scroller to delete or press ■ STOP button to cancel.
 <b>Delete All</b>	Scroll down and press the center button of the scroller to enter Delete All setting. A message will prompt asking if you want to delete all the songs in this folder, press the center button of the scroller to delete all. Otherwise press ■ STOP to cancel.

## E. 📺 AV Recorder



In this category you can record your favorite TV show directly with PVR or set the timer to schedule a record time.







To enter the AV Recorder category:

Press the MODE button or scroll down the scroller to select 📺 and then press the center button of the scroller to enter.

- Press ● button to start recording
- Press ■ button to stop recording during playback
- Press ■ MENU button to enter the AV Recorder Menu. To exit the menu, press ■ MENU again

The AV Recorder menu contains the following:

 <b>Timer Record</b>	 <b>TIME / 📺 LENGTH</b> Press the center button of the scroller to enter Alarm Clock setting.  Press the center button of the scroller to set the time. Scroll up/down to set the <b>HOUR</b> and then press the center button of the scroller to confirm and continue. Scroll up/down to set the <b>MINUTE</b> and then press the center button of the scroller to confirm and continue. Scroll up/down to set the <b>SECOND</b> and then press the center button of the scroller to confirm.  Scroll down the scroller to " <b>SAVE</b> " and press the center button of the scroller to keep the setting.
--	--


<p> <b>Quality</b></p>	<p>LP  <b>LOW QUALITY</b> / SP  <b>HIGH QUALITY</b>  Scroll down and press the center button of the scroller to enter Quality setting.  Scroll up/down to select the preferred setting and press the center button of the scroller to confirm.</p>
<p> <b>Information</b></p>	<p><b>ON/OFF</b>  Scroll down and press the center button of the scroller to enter Information setting.  Scroll up/down to select either to enable or disable the information display and then press the center button of the scroller to confirm.  When the information display is disabled, no indicators or key instructions will be shown on the screen (except low-battery indicator ).</p>
<p> <b>LCD Off</b></p>	<p>It's recommended to turn the LCD display off to conserve power during the timed recording. While the PVR is waiting for timed recording, the blue LED will keep blinking reminding you that the timed record has been activated.  To turn the LCD off, scroll down and press the center button of the scroller to enter LCD setting. A message will prompt you asking if you want to turn off the LCD display. Press the center button of the scroller to confirm. Otherwise press  STOP button to cancel.</p>





## F. Slide Show

---


In this category you can view photos as a slide show.


To enter the Slide Show mode:

Press the MODE button or scroll down the function scroller to select  and then press the center of the function scroller or press OK button to enter.

- Scroll up/down the function scroller to select a photo as the beginning of the slide show
- Press  button to start the slide show
- Press  button to stop the slide show during playback
- Press  MENU button to enter the Slide Show Menu. To exit the menu, press  MENU again

The Slide Show menu contains the following:



 <b>Interval</b>	Press the center button of the scroller to enter <b>Interval</b> setting. The default timing between slides is set to 5 seconds. To change the setting, press the center button of the scroller and then scroller up/down to increase/decrease the time. When the setting is done, press again the center button to confirm. To keep the new setting, scroll down the scroller to <b>SAVE</b> and press the center button of the scroller.
--	--

 <b>Information</b>	<p><b>ON/OFF</b></p> <p>Scroll down and press the center button of the scroller to enter Information setting.</p> <p>Scroll up/down to select either to enable or disable the information display and then press the center button of the scroller to confirm.</p> <p>When the information display is disabled, there won't be any indicators or key instructions shown on the screen (except low-battery indicator ).</p>
---	--


## G. Calendar

This PVR can serve as an electronic calendar.

To enter the Calendar category:

Press the MODE button or scroll down the scroller to select  and then press the center button of the scroller to enter. The calendar will display. To switch to clock view, press  MENU button.

The Calendar menu contains the following:

 <b>Calendar/ Clock</b>	<p>Press the center button of the scroller to enter Calendar/ Clock setting.</p> <p>Scroll up/down to select either to display calendar or clock and then press the center button of the scroller to confirm.</p>
---	---



## Date/Time

### 1 DATE

Scroll down and press the center button of the scroller to enter Date/Time setting.

To change the date setting, press the center of the scroller or press OK button again.

*Step 1.* Scroll up/down to change the **YEAR** and then press the center button of the scroller to confirm and continue.

*Step 2.* Scroll up/down to change the **MONTH** and then press the center button of the scroller to confirm and continue.

*Step 3.* Scroll up/down to change the **DAY** and then press the center button of the scroller to confirm.

To record the change you've made, scroll down to **SAVE** and press the center button of the scroller to keep the setting.

## ⌚ **TIME**

Scroll down and press the center of the scroller to enter Date/Time setting.

To change the time setting, scroll down to TIME adjustment item, and then press the center button of the scroller.

*Step 1.* Scroll up/down to change the **HOUR** and then press the center of the scroller or press OK button to confirm and continue.

*Step 2.* Scroll up/down to change the **MINUTE** and then press the center of the scroller or press OK button to confirm and continue.

*Step 3.* Scroll up/down to change the **SECOND** and then press the center of the scroller or press OK button to confirm.

To record the change you've made, scroll down to **SAVE** and press the center button of the scroller to keep the setting.


To exit the menu, press **■** MENU button.



## H. Game

There are two 2 games available on the PVR: Puzzle and Tic-Tac-Toe.

To enter the Game category:

Press the MODE button or scroll down the scroller to select  and then press the center button of the scroller to enter.




The screen on the left appears:

Press the center button of the scroller to enter TIC-TAC-TOE game or scroll down to select PUZZLE game.

### TIC-TAC-TOE



- Scroll up/down and then press the center of the scroller or press OK button to choose if you want to start the game first or let the PVR go first
- The first player is “O”. The other one is “X”
- Press the center of the function scroller or press OK button to start
- Select the square you want to place your symbol (“O” or “X”) in by scrolling up/down and then press the center of the function scroller or press OK to confirm
- The first player to complete a row of three squares is the winner
- You can't occupy a square that is already occupied
- To stop the game during playing, press  button anytime



## PUZZLE

- Scroll up/down to select a numbered square you want to move with the floating frame and then press the center of the function scroller or press OK button to confirm
- Players have to arrange all the numbered square in sequence within 50 seconds
- Only the squares next to the empty frame can be moved
- To stop the game during playing, press ■ button any-time



## I. Setup Menu

---

In the Setup Menu you can change the factory default setting to fit your needs and format the data stored in the external memory card/internal memory.





To enter the Setup Menu:

Press the MODE button or scroll down the scroller to select  and then press the center button of the scroller to enter.

The Setup Menu appears. Scroll up/down and press the center button of the scroller to enter each item.

The Setup Menu contains the following:

<b>STARTUP SOUND</b>	<b>OFF/ON</b> Scroll up/down to turn off/on the startup sound and then press the center button of the scroller to confirm.
<b>STARTUP SCRIN</b>	<b>OFF/IMAGE</b> Scroll up/down to disable/enable startup screen and then press the center button of the scroller to confirm.
<input type="checkbox"/> <b>AUTO LCD OFF</b>	<b>30 Sec/1 Min/1.5 Min/2 Min/NEVER</b> Scroll up/down to set up the timing you want to turn off the LCD display and press the center button of the scroller to confirm.

<p> <b>AUTO POWER OFF</b></p>	<p><b>1.5 Min/3 Min/5Min/NEVER</b>          Scroll up/down to set up the timing you want to power off the PVR when it is not in use.          Press the center button of the scroller to confirm.</p>
<p> <b>BEEP</b></p>	<p><b>ON/OFF</b>          Scroll up/down to turn on/off the beep and press the center button of the scroller to confirm.</p>
<p> <b>FORMAT</b></p>	<p>When you choose the format option, a message will prompt asking if you want to format or not, press the center button of the scroller to confirm. Otherwise press  STOP button to cancel.</p>



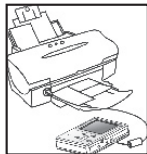
## Direct Print

Direct Print provides a direct connect solution for the PVR to communicate with the printers. If you connect PVR to a printer which supports DPS (Direct Print Services), then the photos stored in the PVR can be printed directly without needing a PC. It's that easy!

Follow the steps below to print your photos:

### Step 1. Connecting to a printer

Power on the PVR. Connect one end of the included USB cable to the USB port of the PVR, the other end to the USB port of your printer.



### Step 2. Selecting DIRECT PRINT

Upon connecting the PVR to your printer, a mode selection screen appears. Press the MODE button to enter DIRECT PRINT.



### Step 3. Selecting Photos

A message appears reminding you not to connect to PC. Press the OK button to continue. The DPS menu appears. Press the OK button to enter SELECT PIC menu.

## Selecting Particular Photos



Press the OK button twice and scroll up/down to pick up the photos and then press the OK button to confirm. A printer icon will appear on the photos being selected. When the selection is done, press the **■** button to return.



## Select All Photos

Press the OK button and scroll down to ALL and then press the center button of the scroll to confirm. All the photos will then be selected.

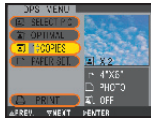
## Step 4. Enhancing Photo Quality



Scroll down to OPTIMAL. The default is set to “OFF”. To change the setting, press the center button of the scroller and scroll down to select “ON”. Press again the center button to confirm.

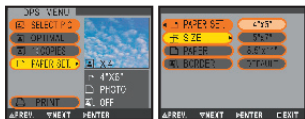
Note: If you don't want to change the setting, you may skip this step or select CANCEL in its menu.

## Step 5. Setting the Number of Copies



Scroll down to COPIES. The default setting is set to “1”. To change the setting, press the center button of the scroller and scroll up to increase the number of copies.

## Step 6-1. Setting Paper Size □



Scroll down to PAPER SET. You can change the paper size, paper type, and border settings. To change the paper size setting, press the center button and scroll up/down the scroller to the preferred size. Press again the center button to confirm.

## Step 6-2. Setting Paper Type □



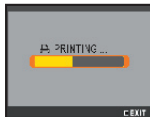
Scroll down to PAPER. To change the paper type, press the center button and scroll up/down the scroller to the preferred paper. Press again the center button to confirm.

## Step 6.3. Setting Borders □



Scroll down to BORDER. To change the border setting, press the center button and scroll up/down the scroller to either add the border, cancel the border or keep the photo in its original. Press again the center button to confirm.

If you are satisfied with the PAPER SET. settings, press **■** button to return to DPS menu.



## Step 7. Printing

Scroll down to PRINT. Press the OK button to start printing. To cancel the print, press **■** button anytime.

# Specifications

<b>Product Function</b>	Digital Photo Player, Digital Video Player, Digital Video Recorder, Digital Voice Player, Digital Voice Recorder, MP3 Player, USB Portable Disk, SD/ MMC Card Reader, Calendar, Clock and Games
<b>Display</b>	2.5" TFT LCD
<b>Microphone</b>	Built-in
<b>Speaker</b>	Built-in
<b>TV System</b>	NTSC/PAL
<b>DPS Support</b>	Yes, supports Direct Printer Services
<b>Audio Effects</b>	POP/Jazz/Classic/Bass/Rock
<b>Interface</b>	USB/AV In/Earphone/DC-in
<b>Memory Card Slot</b>	SD/MMC
<b>Internal Memory</b>	Built-in 32MB (Preformat Space)
<b>File Format</b>	ASF(video)/JPEG(photo)/MP3/WAV(audio)
<b>Power</b>	Rechargeable Li-ion Battery x1 ; Power Adapter
<b>Mass Storage</b>	Windows 98SE/2000/Me/XP ; Mac OS 9.X and 10.1 above
<b>Dimensions</b>	96 (L) x 77 (W) x 20 (H) mm, 3.7 (L) x 3.0 (W) x .78 (H) inches
<b>Weight</b>	110g (without battery), .25lbs (without battery)





## 90 DAY LIMITED WARRANTY APPLIES TO AUDIOVOX INTERNET PRODUCTS

AUDIOVOX ELECTRONICS CORPORATION (the Company) warrants to the original retail purchaser of this product that should this product or any part thereof, under normal use and conditions, be proven defective in material or workmanship within 90 days from the date of original purchase, such defect(s) will be repaired or replaced with reconditioned product (at the Company's option) without charge for parts and repair labor.

To obtain repair or replacement within the terms of this Warranty, the product is to be delivered with proof of warranty coverage (e.g. dated bill of sale), specification of defect(s), transportation prepaid, to an approved warranty station. For the location of the nearest warranty station to you, call toll-free to our control office: 1-800-290-6650

This Warranty does not extend to the elimination of externally generated static or noise, to correction of antenna problems, to costs incurred for installation, removal or reinstallation of the product, or damage to tapes, discs, speakers, accessories, or electrical systems.

This Warranty does not apply to any product or part thereof which, in the opinion of the Company, has suffered or been damaged through alteration, improper installation, mishandling, misuse, neglect, accident, or by removal or defacement of the factory serial number/bar code label(s). THE EXTENT OF THE COMPANY'S LIABILITY UNDER THIS WARRANTY IS LIMITED TO THE REPAIR OR REPLACEMENT PROVIDED ABOVE AND, IN NO EVENT, SHALL THE COMPANY'S LIABILITY EXCEED THE PURCHASE PRICE PAID BY PURCHASER FOR THE PRODUCT.

## WARRANTY CONTINUED

This Warranty is in lieu of all other express warranties or liabilities. ANY IMPLIED WARRANTIES, INCLUDING ANY IMPLIED WARRANTY OF MERCHANTABILITY, SHALL BE LIMITED TO THE DURATION OF THIS WRITTEN WARRANTY. ANY ACTION FOR BREACH OF ANY WARRANTY HEREUNDER INCLUDING ANY IMPLIED WARRANTY OF MERCHANTABILITY MUST BE BROUGHT WITHIN A PERIOD OF 30 MONTHS FROM DATE OF ORIGINAL PURCHASE. IN NO CASE SHALL THE COMPANY BE LIABLE FOR ANY CONSEQUENTIAL OR INCIDENTAL DAMAGES FOR BREACH OF THIS OR ANY OTHER WARRANTY, EXPRESS OR IMPLIED, WHATSOEVER. No person or representative is authorized to assume for the Company any liability other than expressed herein in connection with the sale of this product.

Some states do not allow limitations on how long an implied warranty lasts or the exclusion or limitation of incidental or consequential damage so the above limitations or exclusions may not apply to you. This Warranty gives you specific legal rights and you may also have other rights which vary from state to state.

U.S.A. : AUDIOVOX ELECTRONICS CORPORATION, 150 MARCUS BLVD.,  
HAUPPAUGE, NEW YORK 11788  
CANADA : AUDIOVOX CANADA LTD., MISSASSAUGA, ONTARIO,  
CANADA L4W5A1

128-6001

## Free Manuals Download Website

<http://myh66.com>

<http://usermanuals.us>

<http://www.somanuals.com>

<http://www.4manuals.cc>

<http://www.manual-lib.com>

<http://www.404manual.com>

<http://www.luxmanual.com>

<http://aubethermostatmanual.com>

Golf course search by state

<http://golfingnear.com>

Email search by domain

<http://emailbydomain.com>

Auto manuals search

<http://auto.somanuals.com>

TV manuals search

<http://tv.somanuals.com>