

CAT132 MX  
Headset

user's  
guide

AVAYA  
communication

49119-01 (11\*00)  
Printed in USA

AVAYA  
communication





Avaya  
welcomes  
you to comfort and  
performance

This User's Guide will help you achieve optimum fit and performance with your CAT132 MX headset.

## 1 before you begin

### Headset/computer connection

Match the icons on the headset cable plugs to the appropriate ports on your computer. Your headset has separate plugs for headphone  and microphone .



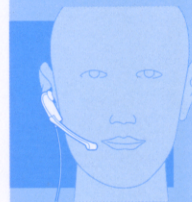
### Verifying performance

To verify the headset is working properly record and playback a sound clip, using the audio software you have available.

## 2 adjusting the ear piece

### Headset placement

Place the round end of the headset into your outer ear as shown. The earpiece hangs gently just inside your ear. Don't force the earpiece into the ear canal. Position the headset at an angle which feels comfortable to you.

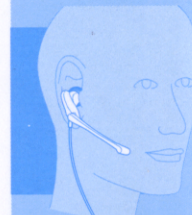


### Enhancing fit

You can wear the headset without an ear cushion or with one of the enclosed cushions. For a more secure fit use the enclosed *circular ear cushion* or the *stabilizer ear cushion*.

### Using the circular ear cushion

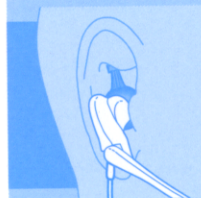
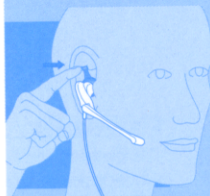
1. Gently pull the ear cushion over the earpiece.
2. Place the round end of the headset into your outer ear. Let the earpiece hang gently inside your ear.





### Using the stabilizer ear cushion

1. Gently pull the stabilizer ear cushion over the earpiece. The tip of the cushion should point straight up.
2. Initially place only the part of the circular cushion covering the earpiece into your outer ear. Then gently push the stabilizer into the upper ear cavity.
3. The stabilizer should be positioned between the earpiece and your ear cavity.

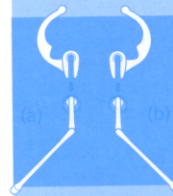


# 3 using the flexible earhook

*Begin by using the headset without the flexible Earhook.  
If you require a more stable fit, follow the instructions below.*

### Attaching the earhook

The flexible Earhook permits your headset to be worn on either ear. For use on your (a) left or (b) right ear, first attach the flexible Earhook as shown.



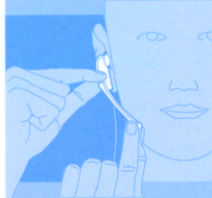
### Earhook placement

1. Place the receiver end of the headset into your outer ear as shown. The headset should rest at an angle that feels comfortable to you.
2. With one hand firmly hold the headset in place while gently shaping the flexible Earhook behind your ear and along the side of your head with the other hand.

Once shaped, the Earhook should require little or no readjustment on next use.

## 4 adjusting the microphone

With one hand, hold the earpiece securely. With the other hand, rotate the microphone boom so the microphone is near the corner of your mouth.



## 5 additional features

### Headset cradle

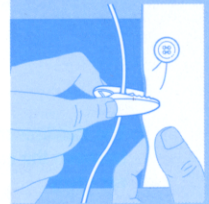
Your headset includes a cradle for convenient storage.

1. Remove the paper strip to reveal the adhesive on the back of the cradle.
2. Position cradle on your monitor.
3. Press securely to adhere to surface.
4. To store your headset, place the earpiece in the curved slot of the cradle.



### Clothing clip

The clothing clip keeps the headset properly seated and free from the cord's weight. Attach the clothing clip at a comfortable level.



## Free Manuals Download Website

<http://myh66.com>

<http://usermanuals.us>

<http://www.somanuals.com>

<http://www.4manuals.cc>

<http://www.manual-lib.com>

<http://www.404manual.com>

<http://www.luxmanual.com>

<http://aubethermostatmanual.com>

Golf course search by state

<http://golfingnear.com>

Email search by domain

<http://emailbydomain.com>

Auto manuals search

<http://auto.somanuals.com>

TV manuals search

<http://tv.somanuals.com>