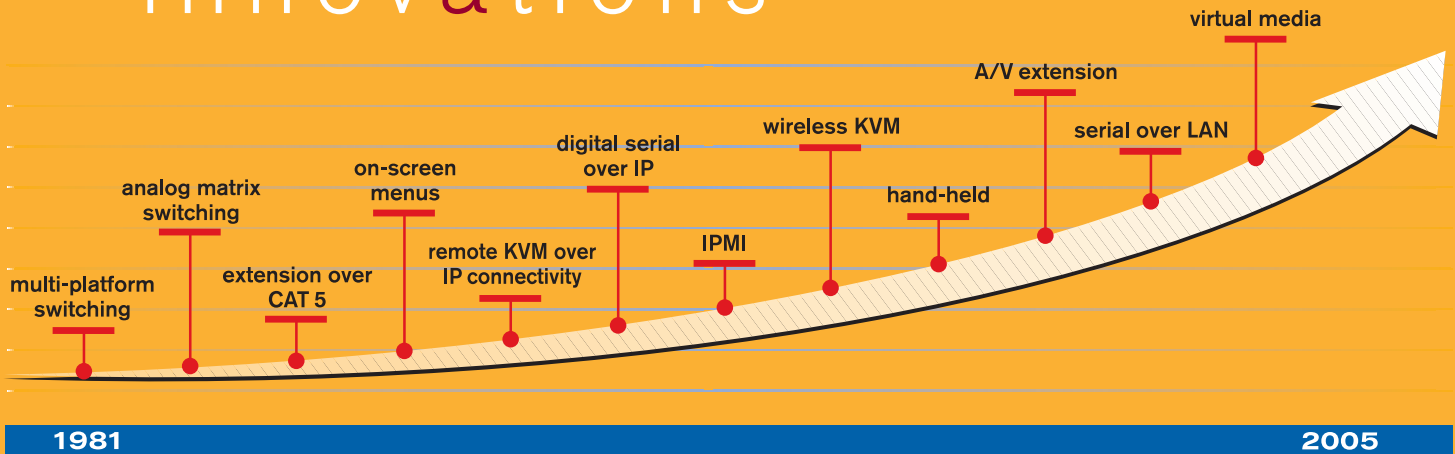




AMX

Multi-user, multi-platform switching
for real-time environments

AMX5000 • AMX5010 • AMX5020 • AMX5030 • AMX5110
AMX5120 • AMX5130 • AMIQ • AMWorks



ABOUT AVOCENT AND AMX

The AMX™ switch advances the Avocent field-proven technology and market leadership in analogue matrix design by providing smarter KVM switching solutions. The AMX switch delivers powerful analogue matrix switching, simple installation and advanced administrative tools to help you efficiently manage your IT environment.

The AMX switching solution provides real-time access, high quality video, smart cable management and advanced security for managing IT environments and other diverse applications. The AMX switch has advanced security features, including LDAP authentication and SNMP, enhancing our field-proven technology and market leadership in KVM analogue matrix design. With LDAP authentication, the AMX switch easily integrates with Microsoft Active Directory, RADIUS and other LDAP services and uses the same username and password that exists for each user's normal network authentication. Our enhanced SNMP lets you set up traps in the AMX switch for convenient report alarms to an external logging destination.

Designed to support diverse applications, the AMX switch is the smart KVM solution for demo labs, designer environments and test labs. Leading TV networks, including FOX, ABC and CNBC, also use the AMX KVM switching solution to control access to their machine room computers and broadcast devices.



“Easy to install, leverages existing cabling, has intuitive GUI, provides excellent video quality.”

– Network World

AMX5000 • AMX5010 • AMX5020 • AMX5030 • AMX5110
AMX5120 • AMX5130 • AMIQ • AMWorks



AMX SWITCHES & APPLIANCES - FAMILY OVERVIEW

The Avocent® AMX analogue matrix switching solution supports consolidated control of multi-user, multi-rack server environments. AMX switch solutions provide end-to-end CAT 5 connectivity for access from the server to the desk and feature full-system management with an advanced Java-based administration tool, optimal video resolution and the patented OSCAR® graphical user interface.

SPECIFICATIONS

MECHANICAL	Height	Width	Depth	Weight
AMX5000 Matrix Switch	1.7" (4.3 cm)	17.2" (43.2 cm)	11.1" (28.1 cm)	9.3 lbs (3.7 kg)
AMX5010 Matrix Switch	3.4" (8.6 cm)	17.2" (43.2 cm)	11.1" (28.1 cm)	16 lbs (7.27 kg)
AMX5020 Matrix Switch	1.7" (4.3 cm)	17.2" (43.2 cm)	13.9" (35.2 cm)	9.3 lbs (3.7 kg)
AMX5030 Matrix Switch	1.7" (4.3 cm)	17.2" (43.2 cm)	13.9" (35.2 cm)	9.3 lbs (3.7 kg)
AMIQ-PS2 Server Interface Module	0.8" (2.0 cm)	1.57" (4.0 cm)	14.1" (36.0 cm)	0.8 lbs (0.3 kg)
AMIQ-USB Server Interface Module	0.8" (2.0 cm)	2.4" (6.1 cm)	14.1" (36.0 cm)	0.8 lbs (0.3 kg)
AMIQ-VSN Server Interface Module	0.8" (2.0 cm)	2.4" (6.1 cm)	14.1" (36.0 cm)	0.8 lbs (0.3 kg)
AMIQ-SRL Server Interface Module	0.8" (2.0 cm)	2.4" (6.1 cm)	14.1" (36.0 cm)	0.8 lbs (0.3 kg)
AMIQDM-PS2 Dual UTP PS/2 interface module with audio and serial	0.8" (2.0 cm)	1.5" (3.9 cm)	3.85" (9.9 cm)	0.8 lbs (0.3 kg)
AMIQDM-USB Dual UTP USB interface module with audio and serial	0.8" (2.0 cm)	1.5" (3.9 cm)	3.85" (9.9 cm)	0.8 lbs (0.3 kg)
AMIQDM-VSN Dual UTP USB interface module with audio and serial	0.8" (2.0 cm)	1.5" (3.9 cm)	3.85" (9.9 cm)	0.8 lbs (0.3 kg)
AMX5110, AMX5120 & AMX5130 User Stations	1.7" (4.4 cm)	10.9" (27.9 cm)	11.5" (29.2 cm)	5 lbs (2.0 kg)

ENVIRONMENTAL / POWER / HARDWARE

Operating Temperature	32° (0°C) to 122° (50°C)
Storage Temperature	-4° (-20°C) to 122° (50°C)
Power Requirements	100 - 240 VAC, 50 - 60 Hz
Supported Hardware - Computer	PS/2, Sun and USB with audio and serial
Supported Hardware - Video Modes	VGA, SVGA, XGA, SXGA, up to 1600 x 1200 @ 75Hz resolution at 100' or 1280x1024 @ 75Hz at 1000'
Supported Hardware - Peripherals	PS/2 keyboard, PS/2 mouse, IntelliMouse (PS/2 only), Sun Type 6, MAC USB 3.5 mm male stereo audio out, 3.5 mm male mono audio in, serial 9pin D male full hardware flow control
Supported Cable Types	Unshielded twisted pair, including CAT 5, CAT 5e, CAT 6
Warranty	Two Year

ORDERING INFORMATION

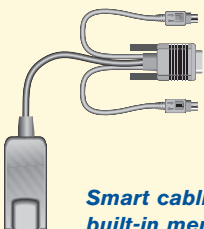
AMX5000-XXX	8 output ports, 32 input ports, rack mount switch
AMX5010-XXX	16 output ports, 64 input ports, rack mount switch
AMX5020-XXX	4 output ports, 42 input ports, rack mount switch
AMX5030-XXX	4 output ports, 16 input ports, rack mount switch
AMIQ-PS2	Server Interface Module, VGA, PS/2 keyboard/mouse
AMIQ-USB	Server Interface Module, VGA, USB keyboard/mouse
AMIQ-VSN	Server Interface Module, VGA, Sun keyboard/mouse,
AMIQ-SRL	Server Interface Module, VT100 serial-based devices
AMIQ-DM-PS2	Dual UTP PS/2 interface module with audio and serial, VGA, PS/2 keyboard/mouse
AMIQ-DM-USB	Dual UTP USB interface module with audio and serial, VGA, USB keyboard/mouse
AMIQ-DM-VSN	Dual UTP USB interface module with audio and serial, VGA, Sun keyboard/mouse
AMX5110-XXX	Single user, CAT 5 connection, desktop user station with local PC port, no skew
AMX5120-XXX	Single user CAT 5 connection, desktop user station with local PC port
AMX5130-XXX	AMX user station with audio, serial and USB
AMWorks	System administration software included
UPD-XX	Power supply for serial IQ

flexible

SWITCHING SOLUTIONS



AMX5000, AMX5010, AMX5020, AMX5030, AMIQ & AMWorks



Smart cabling has built-in memory to run server ID codes.

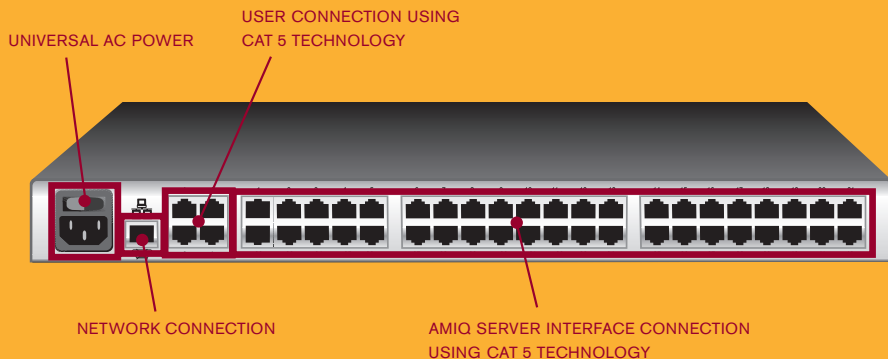
Built on the Avocent superior analogue switching technology, the AMX5000, AMX5010, AMX5020 and AMX5030 matrix switches simplify management in evolving server installations. This solution has a highly scalable architecture that easily accommodates additional servers and users in growing network infrastructures. These matrix switches provide access from a single point or simultaneous access for up to 16 users throughout the data centre.

The AMIQ enhanced CAT 5 server interface module is the best choice for flexibility and performance in complex IT environments. Our CAT 5 design and video technology eliminates bulky cabling connections and delivers real-time, high bandwidth video for KVM switching up to 300 metres away from the server. The AMIQ module has built-in memory that eases configuration by assigning and retaining unique server identification codes for each attached server. This cable intelligence enhances security and prevents unauthorised access to a server through cable manipulation.

The AMX switch features our patented OSCAR[®] graphical user interface, which lets you conveniently switch between connected devices. If you require centralised administration of the AMX switch, AMWorks[®] software is included free with each switch. AMWorks software supports customised user profiles and multi-level security. AMWorks software allows you to build a user database with assigned access and password protection for each server.

You can view all activities that take place on the KVM system, including user login, switches made to servers and changes made to the system connections or setup. The database is centrally stored and can be downloaded to the switch via the network connection port available on all AMX5000, AMX5010, AMX5020 and AMX5030 switches.

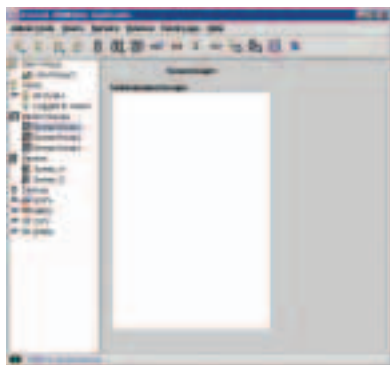
FIELD-PROVEN, RELIABLE TECHNOLOGY, ADVANCED SWITCHING



The AMX5020 switch pictured above supports four simultaneous users and 42 servers.

AMX switching solutions provide flexibility and optimal performance for today's growing IT installations, security-driven environments and diverse applications.

FEATURES & BENEFITS



AMWorks software



AMX5000 switch



AMX5010 switch

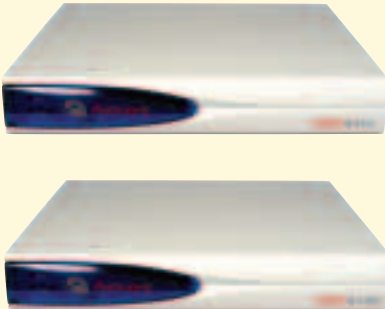
- Access – Full non-blocked access for AMX5000, AMX5010, AMX5020 and AMX5030 switches
- Expandability/Scalability – Architecture makes it easy to add and support more servers as your system grows
- Connectivity – End-to-end UTP cable, including CAT 5, CAT 5e, CAT 6
- AMIQ Server Interface Module – Assigns and stores unique server identification code for easier configuration and enhanced security
- Multi-platform – PS/2, USB, Sun server support and VT100 serial-based devices
- LDAP authentication – Authenticates against existing username/password database
- Enhanced SNMP - Sets up traps and sends alarms
- Flash Upgrade – Simultaneously applies flash updates for all connected devices
- AMWorks software – Management is easier with this advanced Java-based system administration tool
- Event Log – AMWorks software maintains a record of all user logins and switching activity

simpler

SWITCHING SOLUTIONS



AMX5110, AMX5120 & AMX5130



The AMX5110, AMX5120 and AMX5130 user stations connect the user to the AMX switching system. The AMX user stations simplify access by increasing user control and delivering optimal real-time video to the user's desk. The stations connect to the user's multi-platform KVM peripherals (PS/2, USB or Sun) and send the KVM signals over an industry-standard UTP cable to the Avocent AMX5000, AMX5010 and AMX5020 analog matrix switches. This UTP connectivity and analog switching technology provide multi-user access and control to any server in the KVM matrix system. The AMX5130 enables the user to switch speakers and microphone and provides for serial switching up to 38.4Kbps.

The AMX 5120 and AMX 5130 user stations **automatically** compensate for varying cable types and lengths such as CAT 5, CAT 5e and CAT 6 including GigaFlex. The user stations' design also adjusts for skew between RGB signals each time a switch is made to a server.

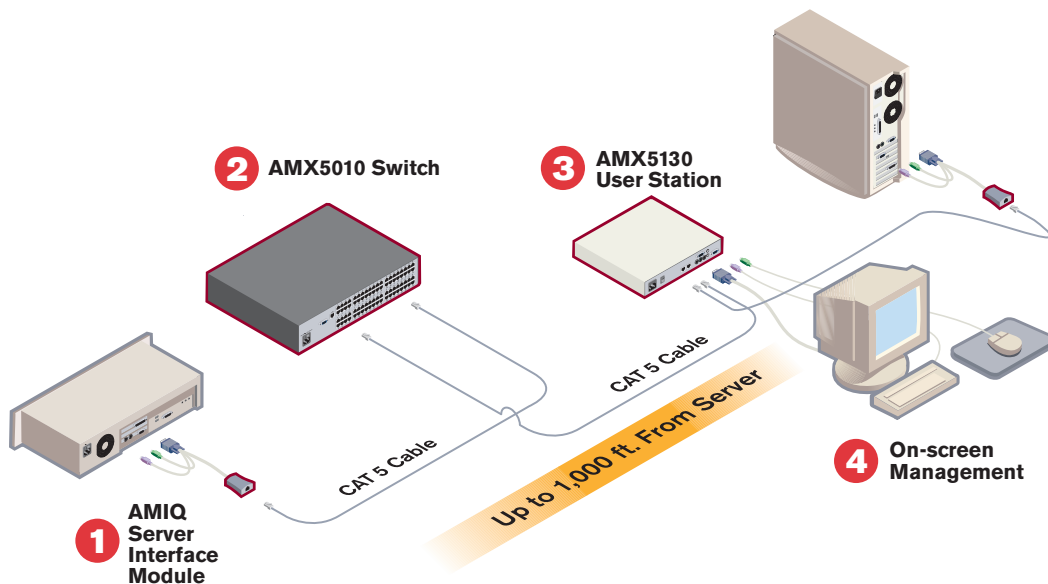
The user stations work with our patented OSCAR® interface. This interface uses intuitive menus for point and click system configuration and server selection. This full-system management tool supports switching in share, private and scan modes.

User stations provide desktop access to the AMX matrix switch and one local computer.

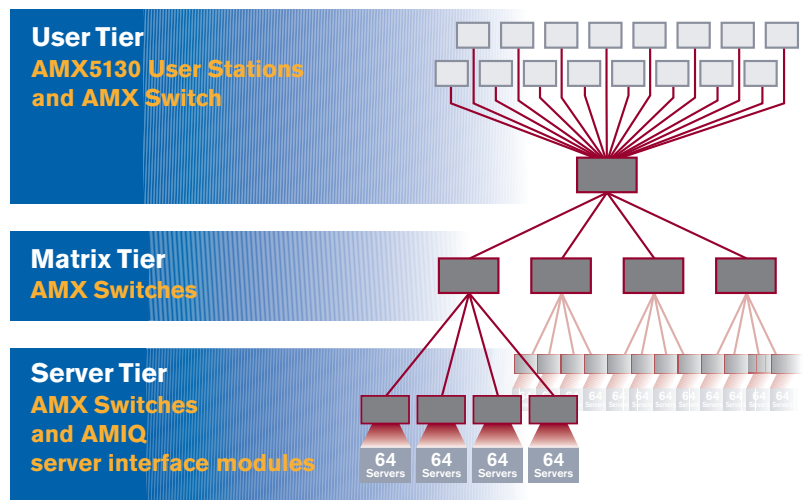


easy INSTALLATION

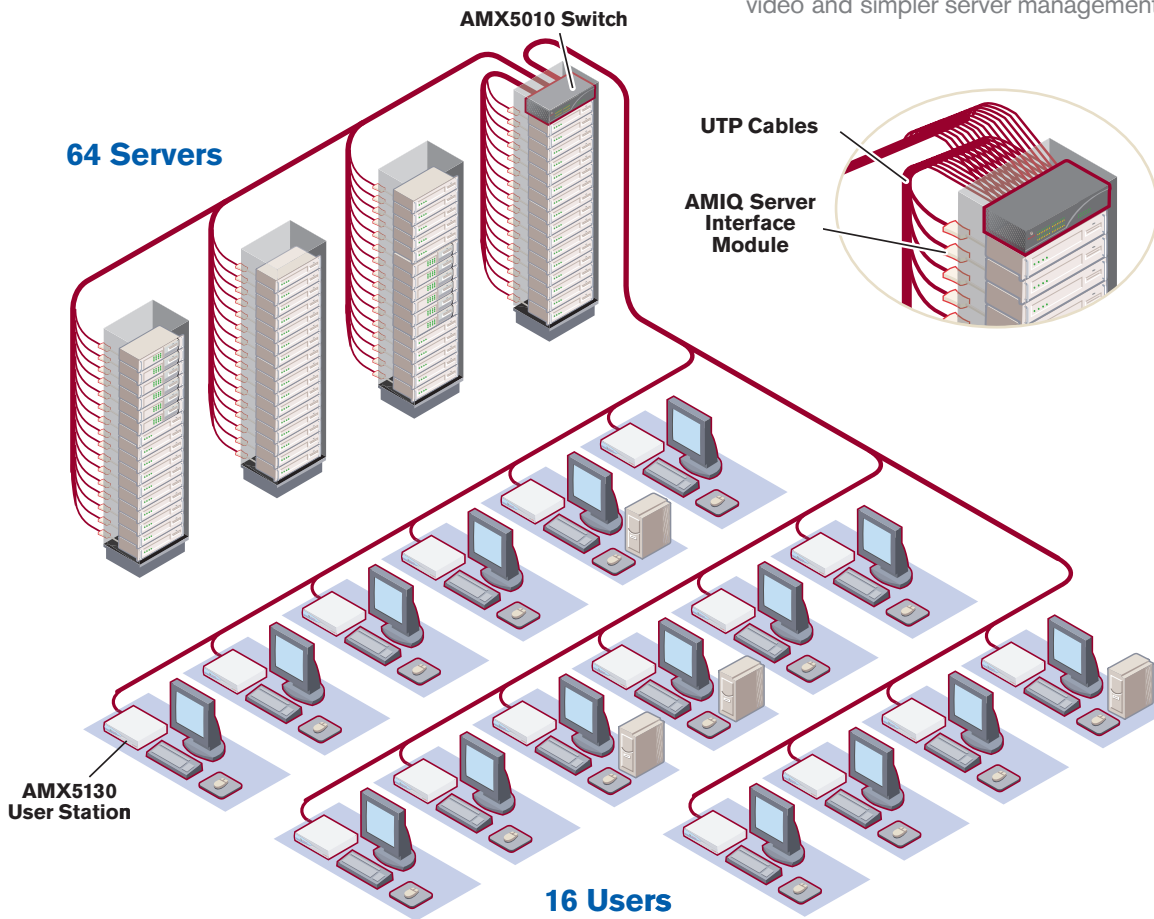
1. Connect the **AMIQ CAT 5 server interface module** to the appropriate ports on the target **server**.
2. Connect the **AMIQ CAT 5 server interface module** to one of the 64 server ports on the rear of the **AMX5010 matrix switch** using CAT 5 cabling.
3. Connect the **AMX5010 matrix switch** to the user connection on the rear of the **AMX5130 user station** using CAT 5 cabling.
4. Connect the **user's KVM peripherals** to the KVM ports on the rear of the **AMX5130 user station**.



Expand above 64 servers by tiering AMX switches using standard UTP connections. With tiering, it is possible to expand to as many as 4,096 servers.



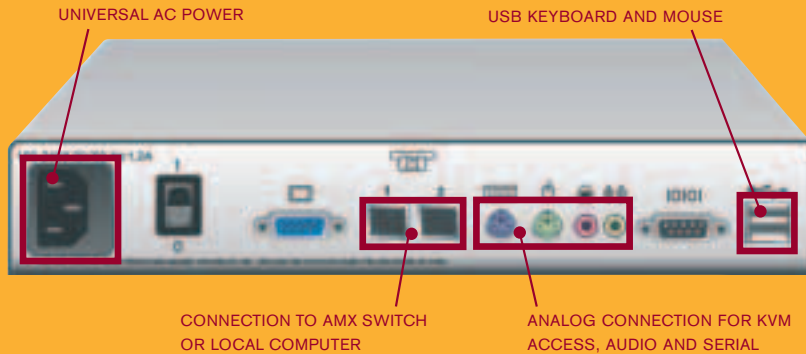
Our reliable, proven technologies deliver real-time access, high quality video and simpler server management.



- END-TO-END CAT 5 CONNECTIONS
- MULTI-USER, MULTI-RACK, MULTI-PLATFORM ACCESS
- REDUCED CABLE BULK WITH SMART AMIQ MODULES
- REAL-TIME, HIGH BANDWIDTH VIDEO
- PATENTED ON-SCREEN DISPLAY
- CONVENIENT SYSTEM ADMINISTRATION FROM ONE CONSOLE
- EASY INSTALLATION
- EASILY EXPANDS TO SUPPORT MORE USERS AND SERVERS

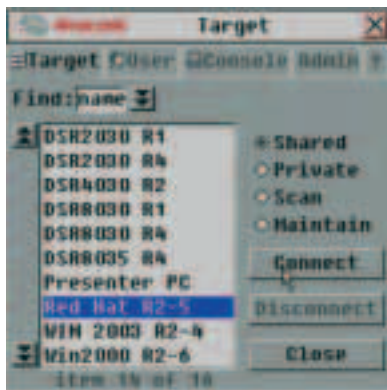
simple
EXPANDABILITY

MAXIMUM PERFORMANCE FOR "REAL WORLD" ENVIRONMENTS



The AMX5130 user station pictured above delivers real-time video, audio and serial access to the user's desk.

The AMX switching solution's real-time access, high quality video, including audio and serial switching, are major benefits in IT environments, demo labs and broadcast environments.



The OSCAR interface provides quick access to your connected servers.

FEATURES & BENEFITS

- Video Display – Optimal video resolutions up to 1280 x 1024 at 300 metres
- Connectivity – End-to-end UTP cable, including CAT 5, CAT 5e, CAT 6
- Enables switching of stereo speakers and mono microphone
- Provides serial switching up to 38.4 Kbps
- Compact Design – Doubles as a monitor stand with zero footprint on the desk
- Multi-platform – Supports PS/2, Sun and USB peripherals
- Works with patented OSCAR on-screen graphical interface to assist you with configuration and server selection
- The AMX5130 also supports AMIQ's with two UTP connections. This allows you to more easily configure the AMX system when a large number of users are attached
- Flash Upgrade – Simultaneously applies flash updates for all connected devices
- High Quality Video – Automatically compensates for varying cable types and lengths and adjusts for signal losses each time a switch is made to a server
- Local PC Access – User stations allow a local computer to be used for the same AMX user interface



The AMX5130 user station automatically compensates for varying cable lengths and adjusts for signal losses so your video performance is the best it can be.

Avocent International Ltd
Avocent House
Shannon Free Zone
Shannon, Co. Clare
Ireland
Tel: +353 (0) 61 471 877
Fax: +353 (0) 61 471 871
www.avocent-europe.com

Avocent International Ltd
Gottlieb-Daimler-Straße 2-4
33803 Steinhagen
Germany
Tel: +49 (0) 52 04 - 91 34 0
Fax: +49 (0) 52 04 - 91 34 99
www.avocent.de

Avocent International Ltd
Les collines de l'Arche
76 route de la demi-lune
Opéra E
92057 Paris La Défense Cedex
France
Tel: +33 (0) 1 49 03 42 42
Fax: +33 (0) 1 49 03 01 42
www.avocent.fr

Avocent International Ltd
Pza Spotorno 3
20159 Milano
Italy
Tel: +39 338 3189340
Fax: +39 02 8907 6456
www.avocent.it

Avocent International Ltd
Spain & Portugal
C/ Rio Guadarrama, 2
28939 Arroyomolinos
Madrid (Spain)
Tel: +34 610 29 95 73

Avocent International Ltd
Regus Business Centre,
Smolensky Passage
Smolenskaya Square 3
Moscow 121099
Russia
Tel: +7 (095) 937 8429
Fax: +7 (095) 937 8290
www.avocent.ru

Avocent International Ltd
Building A
Trinity Court
Wokingham Road
Bracknell
Berkshire RG42 1PL
UK
Tel: +44 (0) 1344 668 049
Fax: +44 (0) 1344 668 149
www.avocent.co.uk

Avocent International Ltd
Brainpark II
Lichtenauerlaan 102-120
3062 ME Rotterdam
The Netherlands
Tel: +31 (0) 10 204 5700
Fax: +31 (0) 10 204 5867
www.avocent.nl

Avocent International Ltd
Box 10026
SE 121 26
Stockholm - Globen
Sweden
Tel: +46 (0) 855 672 672
Fax: +46 (0) 855 672 671
www.avocent.se

Avocent International Ltd
Pegasus Park
Pegasuslaan 5
1831 Diegem
Brussels, Belgium
Tel: +32 2 709 2929
Fax: +32 2 709 2222
www.avocent.be

Avocent International Ltd.
Hübscherstrasse 3
3074 Muri bei Bern
Switzerland
Tel.: +41 (0) 31 951 88 41
Fax: +41 (0) 31 951 88 43
www.avocent.ch



Corporate Headquarters
4991 Corporate Drive, Huntsville, AL 35805
TEL 866.286.2368 FAX 256.430.4030
www.avocent.com

Avocent, the Avocent logo, The Power of Being There, AMX, AMWorks and OSCAR are trademarks or registered trademarks of Avocent Corporation or its affiliates. All other marks are the property of their respective owners. Copyright © 2005 Avocent Corporation. All rights reserved. 0106-AMX-BRO-07-GB

Free Manuals Download Website

<http://myh66.com>

<http://usermanuals.us>

<http://www.somanuals.com>

<http://www.4manuals.cc>

<http://www.manual-lib.com>

<http://www.404manual.com>

<http://www.luxmanual.com>

<http://aubethermostatmanual.com>

Golf course search by state

<http://golfingnear.com>

Email search by domain

<http://emailbydomain.com>

Auto manuals search

<http://auto.somanuals.com>

TV manuals search

<http://tv.somanuals.com>