

ESP Multi-Interface Serial Hubs

Serial Over IP Solutions



Access serial devices over IP

ESP multi-interface (MI) serial hubs, available in 2, 4, 8, and 16 port models, provide serial-over-IP access, allowing devices to be placed at the point of need. Windows, Linux, and UNIX applications are able to access network-attached peripherals as if they were directly connected. Custom applications are not required.

With ESP serial hubs, cable clutter is eliminated. Installations reap the benefits of structured cabling: reduced cost, high-availability, and ease of maintenance. Serial COM ports for new devices can be connected in minutes “on the fly” and do not require opening your server or interrupting operations. Simply attach the ESP serial hub to twisted-pair Ethernet and load the device driver on the server.

In addition to COM port redirection, ESP serial hubs offer Raw TCP, serial tunneling, modem emulation and Telnet modes of operation. When configured to work in tandem, two ESP serial hubs act as a virtual serial cable across IP networks. The onboard Telnet server enables Telnet clients to access console ports of serially-managed devices.

ESP serial hubs are well suited for a wide range of applications including: industrial automation, retail POS, hospitality, back office, traffic control, medical, security systems and more.

Browser-based Management

An internal web server offers a secure means to configure and manage ESP serial hubs as well as ESP-View, a powerful tool for remote diagnostics of cabling and device malfunctions. In addition, ESP serial hubs support powerful management applications, including EquiView Plus for Windows and ESPDIAG for UNIX and Linux.

FEATURES AND BENEFITS

- **Selectable Serial Signalling**
RS-232, RS-422, RS-485
- **Unattended Install**
Quick and consistent installations without onsite technical staff
- **High Availability**
Multi-host attachment allows for hot-backup solutions
- **Selectable Connection Methods**
Telnet Server, COM Redirection
Raw TCP Client/Server,
Serial Tunneling
- **Browser-based Management**
Configuration, Port Status,
Loopback testing, Data scope
- **Modem/Control Signals**
(RTS, CTS, DSR, DTR, DCD)
- **One Click ‘Replace’ Option**
Add a new unit without configuration
- **Structured Cabling**
No more wiring nightmares
- **On-the-fly Connectivity**
Never open your server again



2-port model

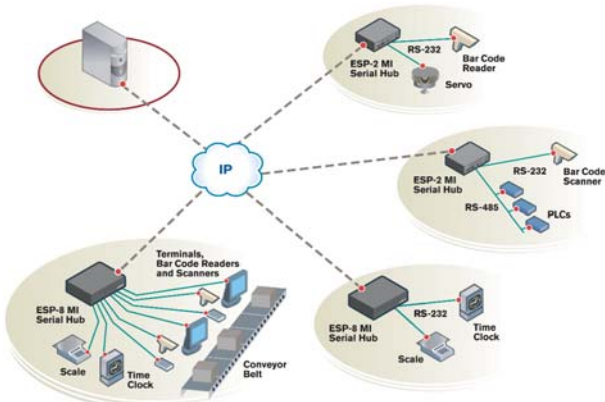
8 and 16-port model

4-port model

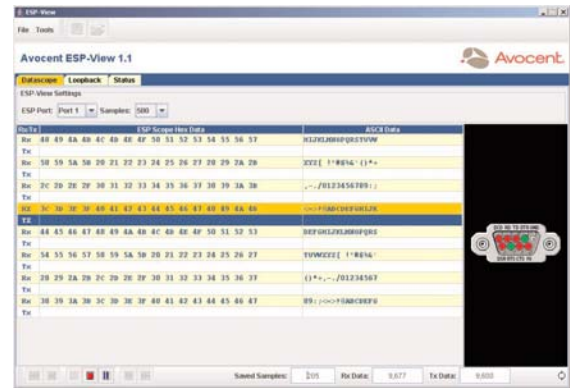
The ESP multi-interface serial hubs allow serial devices to become IP-enabled using RS-232, RS-422 and RS-485 protocols for industrial/manufacturing environments and commercial applications. The ESP-2 MI serial hub can also be attached to a DIN-rail to save space on the factory floor.

ESP MULTI-INTERFACE APPLICATIONS

PORT MANAGEMENT SOFTWARE



The ESP serial hubs are used in a variety of applications using RS-232, RS-422 and RS-485 protocols. Attach one or more serial devices as needed in your network.



Remotely diagnose cable and device anomalies with ESP-View, a built-in Java-based diagnostic utility, using loopback, data scope, breakout box, and monitoring capabilities. ESP serial hubs are also compatible with EquiView Plus and ESPDIAG utilities.

| TECHNICAL SPECIFICATIONS | ESP-2 MI (9-wire) | ESP-4 MI (9-wire) | ESP-8 MI (8-wire) | ESP-16 MI (8-wire) | Rack-Mount Shelf (For ESP-8 MI) | DIN-Rail Mount Kit (For ESP-2 MI) |
|--|--|--|--|--------------------------------|---------------------------------|--|
| PART # | 990458 | 990476 | 990477 | 990478 | 790200 | 790226 |
| MSRP | \$ 349 | \$ 549 | \$ 995 | \$ 1,295 | \$ 75 | \$ 30 |
| POWER | 9VDC -30VDC (at less than 4W) | 5VDC (1A) | 100-250V (0.5A) | 100-250V (0.5A) | N/A | N/A |
| CONNECTORS | (2) DB-9 Male DTE | (4) DB-9 Male DTE | (8) RJ-45 | (16) RJ-45 | N/A | N/A |
| DIMENSIONS | 1.62" H 4.74" W 4.38" D | 1.50" H 5.50" W 6.75" D | 1.75" H 8.75" W 10.00" D | 1.75" H 8.75" W 10.00" D | 1U | 2U |
| SHIPPING WEIGHT | 2.00 lbs. | 3.00 lbs. | 4.50 lbs. | 4.50 lbs. | N/A | N/A |
| SPEED (Kbps) | 230 | 230 | 115.2 | 115.2 | N/A | N/A |
| MODEM CONTROL | RTS, CTS, DSR, DTR, DCD | RTS, CTS, DSR, DTR, DCD | RTS, CTS, DSR, DTR, DCD | RTS, CTS, DSR, DTR, DCD | N/A | N/A |
| SURGE SUPPORT | Surge suppression on every pin of every port | | | | N/A | N/A |
| OS SUPPORT | Windows NT/2000/2003/XP, Citrix, Linux, AIX, Unix, SCO, and Solaris. | | | | | |
| Serial Reversing Cables and Modular Adapters | | | Modular Adapters for CAT 5 Cables | | | |
| Wiring Starter Kit (8-wire) Includes: (1) RJ-45 to DB-25 Male adapter DTE, (1) RJ-45 to DB-25 Female adapter DTE, (1) RJ-45 to DB-25 Male adapter DCE, (1) RJ-45 to DB-25 Female adapter DCE, (1) RJ-45 to DB-9 Male adapter, (1) RJ-45 to DB-9 Female adapter, (1) RJ-45 to RJ45 Cisco Male adapter and (1) 10-foot and 8-wire reversing modular cable. | | 750122 | CAT 5 Serial Adapter Kit Includes: 1) CAT 5 RJ-45 to DB-25 Male adapter DTE, (1) CAT 5 RJ-45 to DB-25 Female adapter DTE, (1) CAT 5 RJ-45 to DB-25 Male adapter DCE, (1) CAT 5 RJ-45 to DB-25 Female adapter DCE, (1) CAT 5 RJ-45 to DB-9 Male adapter DTE, (1) CAT 5 RJ-45 to DB-9 Female adapter DCE, and (1) CAT 5 RJ-45 to RJ45 Cisco Male adapter | | | 750238 |
| RJ-45 Modular Adapters (8-wire) RJ-45 to DB-9 Male adapter, DTE RJ-45 to DB-9 Female adapter, DCE RJ-45 to DB-25 Male adapter, DTE RJ-45 to DB-25 Male adapter, DCE RJ-45 to DB-25 Female adapter, DTE RJ-45 to DB-25 Female adapter, DCE RJ-45 to RJ-45 Male adapter for Cisco and Sun Netra console port | | 210094 210095 210090 210092 210091 210093 210105 | CAT 5, RJ-45 Modular Adapters (8-wire) CAT 5, RJ-45 to DB-9 Male adapter, DTE CAT 5, RJ-45 to DB-9 Female adapter, DCE CAT 5, RJ-45 to DB-25 Male adapter, DTE CAT 5, RJ-45 to DB-25 Male adapter, DCE CAT 5, RJ-45 to DB-25 Female adapter, DTE CAT 5, RJ-45 to DB-25 Female adapter, DCE CAT 5, RJ-45 to RJ-45 Male adapter for Cisco and Sun Netra console port | | | 210122 210120 210124 210123 210125 210121 210127 |
| RJ-45 Serial Reversing Cables (8-wire) 10-foot, reversing cable 25-foot, reversing cable 75-foot, reversing cable | | 690226 690227 690228 | Note: For cable lengths greater than 100 feet, use serial reversing cables and adapters rather than CAT 5 cables and adapters. | | | |



CONFORMANCE



UL 60950-1, CSA C22.2 No. 60950-1 (cUL Listed), FCC Part 15 Class A, CE

ENVIRONMENTAL

Operating temperature: 0° - 40° C
Humidity: 10% to 90% (Non-condensing)

WARRANTY

All ESP multi-interface serial hubs have a five-year warranty.

PRODUCT EVALUATIONS

Try any product for 30-days. Sign-up online or by phone.



One Dambrackas Way, Sunrise, FL 33351
TEL 800.275.3500 - 954.746.9000, Ext. 7110
FAX 954.746.9101 - connectivity.sales@avocent.com
www.avocent.com

Avocent and the Avocent logo are trademarks or registered trademarks of Avocent Corporation. All other marks are the property of their respective owners.
© 2006 Avocent Corporation.

0706-ESP-MI-TP

Free Manuals Download Website

<http://myh66.com>

<http://usermanuals.us>

<http://www.somanuals.com>

<http://www.4manuals.cc>

<http://www.manual-lib.com>

<http://www.404manual.com>

<http://www.luxmanual.com>

<http://aubethermostatmanual.com>

Golf course search by state

<http://golfingnear.com>

Email search by domain

<http://emailbydomain.com>

Auto manuals search

<http://auto.somanuals.com>

TV manuals search

<http://tv.somanuals.com>