

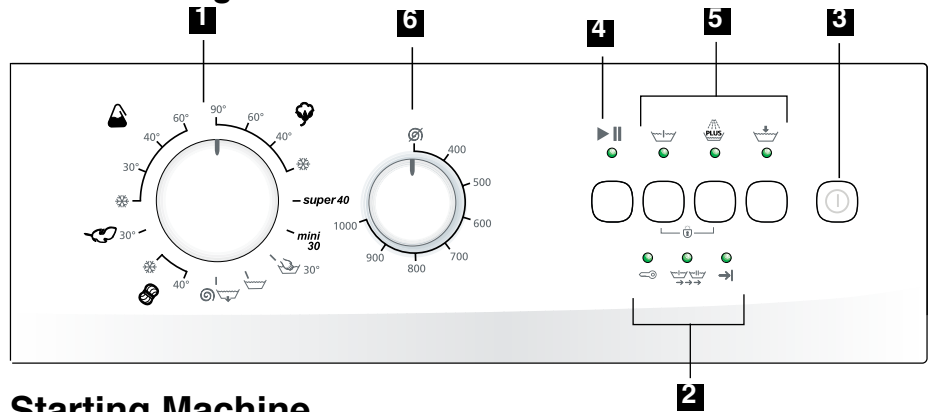


WML 15040 KL | WML 15060 E | WML 15080 P  
 WML 15050 KL | WML 15080 DL | WML 15100 P  
 WML 15060 KL | WML 15080 DB | WML 15100 DB

Washing Machine | User's Manual

Control Panel

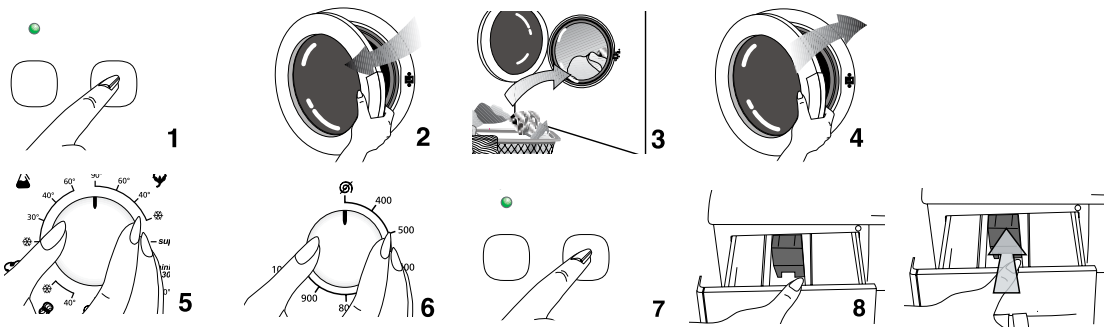
- 1** Program selection knob
- 2** Program follow-up indicator
- 3** On / Off button
- 4** Start/Pause/Cancel button
- 5** Auxiliary function buttons
- 6** Spin speed selection knob



**1** Program Selection and Starting Machine

Plug your machine to outlet. Turn on the machine by pressing "On / Off" key. Open the door by pulling the handle and load the machine without exceeding loading capacity and close the door. Specify the appropriate program by looking at program selection table according to type of laundry, degree of soiledness and washing temperature. Position program selection key to desired washing program-temperature. Select convenient spin speed

related to selected program. If you are using auxiliary function press desired auxiliary function key. Afterwards place appropriate detergent and softener to your machine's detergent drawer. Start your machine by pressing Start/Pause/Cancel button. Start/Pause/Cancel key's led will be on. After your machine starts, you can follow from the program progress display at which step your machine is.



Program selection table

Program	Type of laundry	Maximum Load (kg)	Program Time (minutes)	Water consumption (lt)	Power consumption (kWh)	Prewash	Rinse Plus	Rinse Hold	Spin Speed Selection
Cottons 90	Heavily soiled, heat resistant cotton, linen	5	155	45	1.70	•	•	•	•
Cottons 60 *	Normally soiled, heat resistant cotton, linen	5	145	45	<sup>(1)</sup> 0.95 / <sup>(2)</sup> 1.14	•	•	•	•
Cottons 40	Lightly soiled or heat sensitive cotton	5	150	45	0.65	•	•	•	•
Cold (Cotton)	Lightly soiled or heat sensitive cotton	5	110	45	0.35	•	•	•	•
Super 40	Heavily soiled or heat sensitive cotton	5	180	45	0.65				•
Synthetics 60	Normally soiled, heat resistant cotton/synthetic mixture	2.5	120	55	0.90	•	•	•	•
Synthetics 40	Lightly soiled or heat sensitive cotton/synthetic mixture	2.5	125	55	0.55	•	•	•	•
Synthetics 30	Slightly soiled or heat sensitive cotton/synthetic mixture	2.5	110	55	0.35	•	•	•	•
Cold (Synthetic)	Slightly soiled or heat sensitive cotton/synthetic mixture	2.5	100	55	0.20	•	•	•	•
Delicates 30	Delicate, sensitive synthetic and cotton mixture	2	85	60	0.40		•	•	•
Wool 40	Delicate mixtures with wool and machine washable label	1.5	75	60	0.40		•	•	•
Cold (Wool)	Delicate mixtures with wool and machine washable label	1.5	70	60	0.04		•	•	•
Hand Wash 30	Special program for silks, cashmeres and clothes with not machine washable labels	1	55	50	0.21				•
Mini 30	Special program for slightly soiled and little amounts of laundry (tracking suits, towels, etc., that were used only 1 time)	2.5	30	40	0.16				•
Rinse	Rinsing Program	5	23	15	0.04				•
Spin + Pump	Spinning + Pumping Program	5	14	-	0.03				•

\* Energy Labeling Program (EN 60456)

(1) WML 15060 E - WML 15080 DB - WML 15080 P - WML 15100 P - WML 15100 DB  
 (2) WML 15060 KL - WML 15050 KL - WML 15040 KL - WML 15080 DL

## 2 Technical Features of Your Washing Machine

Models	WML 15040 KL	WML 15050 KL	WML 15060 E WML 15060 KL	WML 15080 DL WML 15080 DB WML 15080 P	WML 15100 P WML 15100 DB
Maximum dry laundry capacity (kg.)	5	5	5	5	5
Height x Width x Depth (cm.)	85 x 60 x 54	85 x 60 x 54	85 x 60 x 54	85 x 60 x 54	85 x 60 x 54
Net Weight (kg.)	63	63	62	62	62
Electricity (V/Hz.)	230/50	230/50	230/50	230/50	230/50
Total Current (A)	10	10	10	10	10
Total Power (W)	2350	2350	2350	2350	2350
Washing -rinsing cycle (cyc/min)	52	52	52	52	52
Spinning cycle (max cyc/min)	400	500	600	800	1000

There may be changes in the technical features without prior notice in order to enhance product quality. The figures in the manual are schematic and may not represent your actual machine one-to-one. Labelling on your product and ones declared in the documents accompanying product are the values obtained under laboratory conditions with given standards. These values may vary according to usage and environmental conditions.

## 3 Warning

- **This product is designed for home use.**
- **If the fuse in your house is less than 16A than have a certified electrician deploy an 16A fuse.**
- **In case of transformer or non-transformer use, grounding installation must be performed with a licensed electrician. Any use before grounding is not our responsibility.**
- **Please call certified service for a failure of electric plug/cable.**
- **Never place your machine over a carpet covered floor.**
- **At first use, washing must be performed at Cotton 90°C program without loading with laundry for getting your machine ready for washing.**
- **Performance of your washing machine depends on the quality of water and hygienic compounded. If low quality and unfitting cleaning material is used the stains will be fixed.**
- **Because of quality control procedure the there might be little amount of water in your machine. This does not have any damage to your machine.**
- Your machine is programmed for starting operation again when electricity is off and on afterwards. You can not press On / Off button to cancel program. Machine will go on program when electricity is on. To CANCEL the program press >Start/Pause/Cancel< button for three seconds. (See Cancelling a program)
- After your machine starts operation, if Start/Pause/Cancel key starts blinking than door is not locked. Open and close the door again begin washing program again.
- If the "washing" led on the program progress display is blinking either there is no water or tap is off. Check your taps. Turn your machine off and on. If the problem persists unplug your machine, turn off tap water and call authorized service.
- If program is started and program selection can not be performed your machine might be in protection mode due to infrastructure problem (voltage, water pressure, etc.) Press and hold the > Start/Pause/Cancel < button for 3 seconds in order to switch machine to factory settings.

## 4 Preparation

Before starting your machine please beware of below mentioned points:

**Did you plug the cable?**

**Did you connect draining hose correctly?**

**Did you close front door?**

**Did you open tap water?**

**Sorting the Laundry**

Sort laundry according to type of fabric, color, level of dirtiness and allowed washing temperature. Do not wash white laundry together with colored ones. Remove hard parts like belt, wrist button, curtain buttons, etc. or place laundry in a cloth bag. Empty pockets. Zip up and button up. Very tiny laundry like baby clothes may get into inside of drum, midst of bellow,

pump filter, hose, etc. in order to prevent this it is advised to place such laundry in a special laundry string bag or large laundry. Your machine can wash "Machine Wash" or "No-matting" labeled woolen with special woolen program. Delicate laundry with "Do not wash" or "hand wash" label (silk, cashmere, pure wool, etc.) can be washed in the special hand-wash program.

**Opening front door**

Pull the handle to open the front door. Your machine's front door is designed for opening during only machine is not operating. If the led displays "door" than door can open.

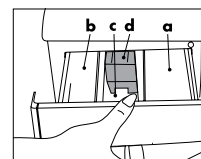
**Loading machine with laundry**

Fill the machine by unfolding and not squeezing laundry. Place hand-woven garments inside-out to the machine. Make sure there is no laundry jammed between bellow and front-door. Close the loading door by pushing. If loading door is not properly closed machine will not start.

**Selection of detergent and softener**

Quantity of the detergent used depends on hardness of water and how soiled laundry is. Recommended values are indicated on the package. If your laundry is low soiled and/or hardness of water is low use less detergent as indicated on the package. Otherwise it may result in excessive foam.

You should use detergent specially designed for automatic washing machines. Avoid using bleach product containing sulfur or chlorine. Place powder detergent and softener in appropriate drawer compartment and closed detergent dispenser.



- a. powder detergent drawer for pre-wash.
- b. powder detergent drawer for main wash.
- c. Softener dispenser
- d. Siphon

Fill the softener as indicated (usually <100ml; 1 tea bag) on package. Never fill more than "MAX" level. Excess amount will drain to suction cup and be wasted. You might need to fill softener again. If softener is thickened over time add some water for thinning. Softener may obstruct siphon and block flow.

**Auxiliary Functions**

**Prewash:** To wash the very dirty laundries, you can use this function in the cotton and synthetic programs.

**Rinse Plus:** You can increase the number of the current rinsing cycles by using this function. Thus, the risk of the sensitive skins get effected by the detergent remaining on the laundry is reduced.

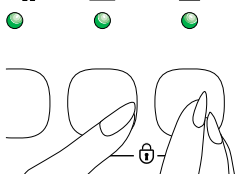
**Rinse Hold:** If you desire to leave your synthetic and wool fabrics in the machine after the wash program you may select the Rinse hold option to prevent them getting wrinkled. If you want to cancel the "Rinse Hold" function, you have to press on "Start/Pause/Cancel" button first, select the desired spin speed and then repress on the "Start/Pause/Cancel" button.

**Spin Speed selection button:** When you want to reduce the spin speed to 500 rpm, press this button.

**Spin Speed selection knob:** With the models that contain a speed selection knob, you can spin your laundries until 1200 rpm by using this knob. Your machine will not spin over 800 rpm in the synthetic programs and over 600 rpm in the woolen programs in order to protect your laundries. If you want to take out your laundries without spinning, turn the speed selection knob to "No Spin" position.

**Pressing "On/Off":** You can make the machine ready for program selection by pressing the "On/off" button. When "On/Off" button is pressed, "Door" LED is on meaning that "door can be opened". To turn off the machine, press the "On/Off" button again. Pressing the "On/Off" button never means that the program is started. You must press "Start/Pause/Cancel" button in order the machine starts its program.

**Child-proof lock:** "This machine is equipped with a child lock in order to prevent the program flow to be affected when the buttons are pressed during washing cycles. In order to enable the child lock, press and keep pressed the 1st and 2nd auxiliary function buttons from the left at the same time for 3 seconds. The light of the 1st auxiliary function button will flash continuously. After the program completes, it is necessary to disable the child lock in order to initiate a new program or interfere the program. Therefore, when the same buttons are pressed for 3 seconds, light of the second auxiliary function will go off.



**Function Selection:** Depending on the selected program, the selectable auxiliary functions are selected by pressing the each function's button. The light of the selected function comes on. Since it is not possible to select some of the auxiliary functions together, one of them becomes off when the other one is selected.

### Program Progress

After the machine starts to operate, the related light in the program follow-up indicator comes on according to the selected program. When a step is complete, the light of the previous step goes off and the light of the related step comes on. When On/Off button is pressed, the "Door" light comes on. After the washing program is selected, "Washing" light on the program follow-up indicator comes on when the "Start/Pause/Cancel" button is pressed. When the program ends "End" light comes on. After the program is complete, the machine will not allow you to open the door for a while for your safety. If you want to open the door meanwhile, the door will not open and the "Door" light will flash. After the door lock is deactivated the "Door" and "End" lights will come on. Now you can open the front door. You can switch your machine in to the "Pause" mode by pressing the "Start/Pause/Cancel" button while your machine is operating. In this case, "Start/Pause/Cancel" light will flash. You can make some changes in the program settings in the Pause mode (See. Changing the Program) and you may also benefit from the laundry addition function if the "Pause" mode is selected at a suitable step of the program (See. Laundry addition function). In order to return to the "Washing" mode from the "Pause" mode, you need to press the "Start/Pause/Cancel" button again. In this case, "Start/Pause/Cancel" light will flash and your machine will resume its program.

### Changing Program

Even if a new program is selected by changing the position of program selection knob while your machine is operating, the first selected program continues to run. In order to change the washing program, the ongoing program should be cancelled. (See. Cancelling a program)

In order to change the auxiliary functions while your machine is operating, you can make any desired changes after pressing the "Start/Pause/Cancel" button.

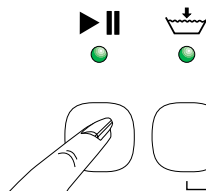
If you want to change the spin speed while your machine is operating, press the "Start/Pause/Cancel" button, select the spin speed and press the "Start/Pause/Cancel" button again.

### Adding laundry

If you want to add laundry to your machine after the washing program starts, switch the machine to pause mode by pressing "Start/Pause/Cancel" button. If the water level in the machine is suitable, the "Door" light on the program follow-up indicator comes on approximately 2 minutes later and you can open the door and add laundry. If the "Door" light is not continuously on at the end of this period, the water level in the machine is not suitable and you can not add laundry. You can resume the program by pressing "Start/Pause/Cancel" button again.

### Cancelling a Program

In order to cancel the selected program, "Start/Pause/Cancel" button is pressed for 3 seconds and machine starts to drain at the end of this time. Meanwhile, "Washing" and "End" lights are on. After the drainage process completes "Start/Pause/Cancel" and "Washing" lights are off. "Door" light starts to flash. When the "Door" light is on continuously, the door can be opened and a new program can be selected. You can start a program by selecting a new program.



The selected program continues to run even if the position of program selection knob is changed while your machine is operating. In order to change the washing program, a new program can be selected and started after "Cancelling a program" by pressing the "Start/Pause/Cancel" button for 3 seconds as described above.

### End of Program

When the program ends "End" light on the program follow-up indicator comes on. "End" and "Door" lights come on within two minutes after the door is opened, the machine becomes ready for the next washing. If any of the buttons is pressed or the position of the selection knob is changed when the machine is at the end of a program, "End" light goes off and only the "Door" light remains on. Meanwhile, if the door is still locked, the "Door" light flashes until the door is opened. To turn the machine off, press the "On/Off" button.

### Emptying Laundry

Your machine stops automatically when the program ends. Turn off the taps. Grab and pull the handle to open the door. Press "On/Off" button to turn off your machine. After you take the laundries out, leave the front door open and ventilate the inside of the machine. Check the inside of the bellows and wipe it.

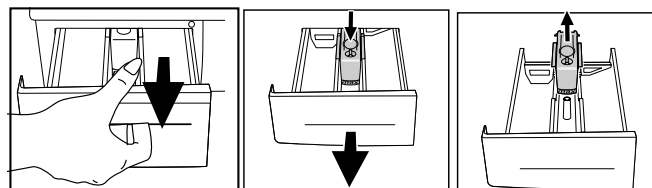
## 5 Care and maintenance

### Detergent Dispenser

Powder detergent residue may accumulate in drawer after a while. In order to clean detergent drawer press the marked point of the siphon on softener compartment and push the drawer towards yourself. Wash the drawer with water

### Siphon

Do not neglect cleaning suction cup when it becomes soiled. In order to take suction cup out first take detergent drawer out. Clean it in order to eliminate blocking by softener residue. After cleaning place suction cup to its place and make sure it is placed properly.



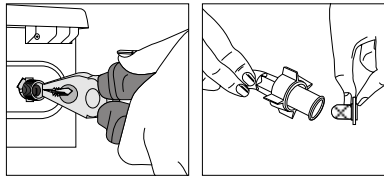
### Water Inlet Filters

There is a filter at each flat end where water inlet hose is connected to tap and at each of water inlet valve placed behind the machine. These filters block entrance of foreign objects and dirt to the machine. Filters must be cleaned regularly to avoid clogging. For doing this, turn off tap water. Pull out water

inlet hoses. Clean the top of the water inlet valve filter with a brush. If filters are extremely clogged you can pull it out with a pincer. **You can take out the flat side of water inlet hoses with its seal and clean with tap water.**

#### Hose

**There is risk of freezing in cold region, if your machine is placed in a cold place remaining water in hoses must be drained with pump filter when machine is not used. Water in hoses can be drained by taking it out from tap.**



#### Cleaning Pump Filter

- Clean the foreign substance filter periodically at least for once!
- If the foreign substances (coins, buttons, baby socks and etc.) clog the foamy water pump, clean the filter.
- Before cleaning, empty the water that remains inside first.
- Hot water danger: There may be 15 liters of hot water at 90°C in the machine. Open the filter carefully.

Drain the water completely in the following situations...

- before cleaning the foreign substance filter;
- before transporting the machine (for example moving into a new house);
- when there is a risk of freezing.

1. Turn off the appliance, unplug the power cable and close the tap. Wait for the hot soapy water to cool enough. Otherwise, there is a risk of scalding.

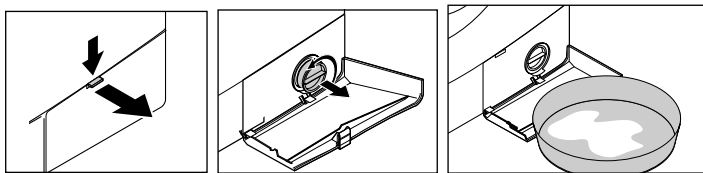
2. Open the service cover by pressing the button. In order to prevent the little amount of water that is inside pump spilling over the floor, put a container in front of the filter cover. Take out the filter by turning anticlockwise.

3. To loosen the foreign substance filter, turn it half turn (anticlockwise) and take the remaining water with a cloth. When there is no water, turn the foreign substance filter until it is totally released and take it out.

4. Clean the foreign substance filter and pump opening.

5. Reinstall the foreign substance filter and turn it tightly (clockwise).

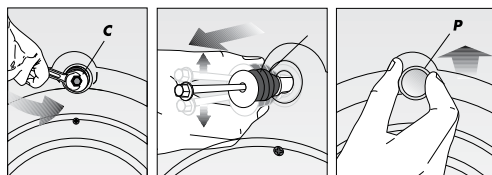
6. Close the service cover.



## 6 Installation

1. Removing the transportation safety bolts

Before the washing machine is operated, the transit bars must be removed! In order to do this:



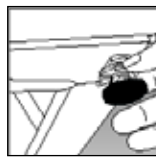
1. Loosen "C" bolts by rotating them counter clockwise with a suitable spanner

2. Remove transportation safety bolts by turning.

3. Place "P" plastic covers onto the openings of transportation locks by rotating in direction of arrow and pushing.

Attention please! Keep the transit safety bolts for using when machine is to be transported again. Always transport your

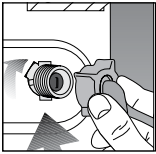
machine with transportation locks.



#### 2. Leveling the feet

In order to operate your machine without noise and vibration it must be properly on balance. Four feet of your machine can be adjusted. First loosen the plastic counter bolt. Tighten the counter bolt after adjusting the feet for leveling your machine.

#### 3. Water Connections



**a) Water Inlet Hose:** Your machine is connected to water supply by special hoses supplied by the machine.

There are plastic seals on hose or plastic bag for eliminating any leakage in connections points. These seals must be used on each side of the connection. Seals on machine side must be connected filter cannal.

After connecting the hose, check all connections for leaks. In order to eliminate any risk due to water leakage keep the taps off when machine is not used.

Your machine will operate efficiently if the water from tap is minimum 1 and maximum 10 bars. Practically 1 bar means 8 liters of water in one minute when tap is fully on.

Connect hose to the machine. Tighten bolts with hand power, do not use spanner.

Do not connect single inlet machine to hot water. If machine is connected with Y part to a double inlet and over 40 °C for single inlet machines, machine may switch to protection mode.

**b) Water drain hose:** Water drain hose could be placed either at the side of the bath tub, or directly to the drain. The hose should not be bent. Water drain hose should be secured with the holder so that it would not fall down on the ground.

The hose should be placed between 40 and 100 cm. from the ground. Water drain hose could be placed directly to the drain water inlet.

#### 4. Electrical connection

Connect the power cord to the appropriate electrical system which is being supported by the maximum voltage and current rating indicated on the rating plate placed on the washing machine.

Look! Page 1, Steps before operating Full automatic Washing Machine and safety precautions. Make sure that you have grounded power outlet.

## 7 Before calling service

**You turned the machine on, but the leds are off on the panel.**

Check the grounding on the power cable or a blown fuse.

Check the front door proper closure.

**Machine does not take water.**

Check the front door for proper closure. Either taps are closed or water intake filters are clogged.

**Taken water is directly discharged.**

Check if the discharge hose placed as described in the users manual or not.

**Water coming from beneath the machine.**

Check the water intake and drain hoses. Tighten the connections. The washers of the hoses may be worn out. If non of the both, the pump filter is not closed properly.

**Foam coming out of the detergent dispenser.**

Check whether your detergent is suitable for automatic machines. Next time use less detergent.

**Pump does not drain water.**

Clean the pump filter. Check whether the drain hose is bent or not. If there is need to clean the pump filter, refer to the pump filter cleaning section of the manual.

## Free Manuals Download Website

<http://myh66.com>

<http://usermanuals.us>

<http://www.somanuals.com>

<http://www.4manuals.cc>

<http://www.manual-lib.com>

<http://www.404manual.com>

<http://www.luxmanual.com>

<http://aubethermostatmanual.com>

Golf course search by state

<http://golfingnear.com>

Email search by domain

<http://emailbydomain.com>

Auto manuals search

<http://auto.somanuals.com>

TV manuals search

<http://tv.somanuals.com>