

BELKIN®

OmniView® SMB KVM-over-IP Switch



Control your servers from any remote location

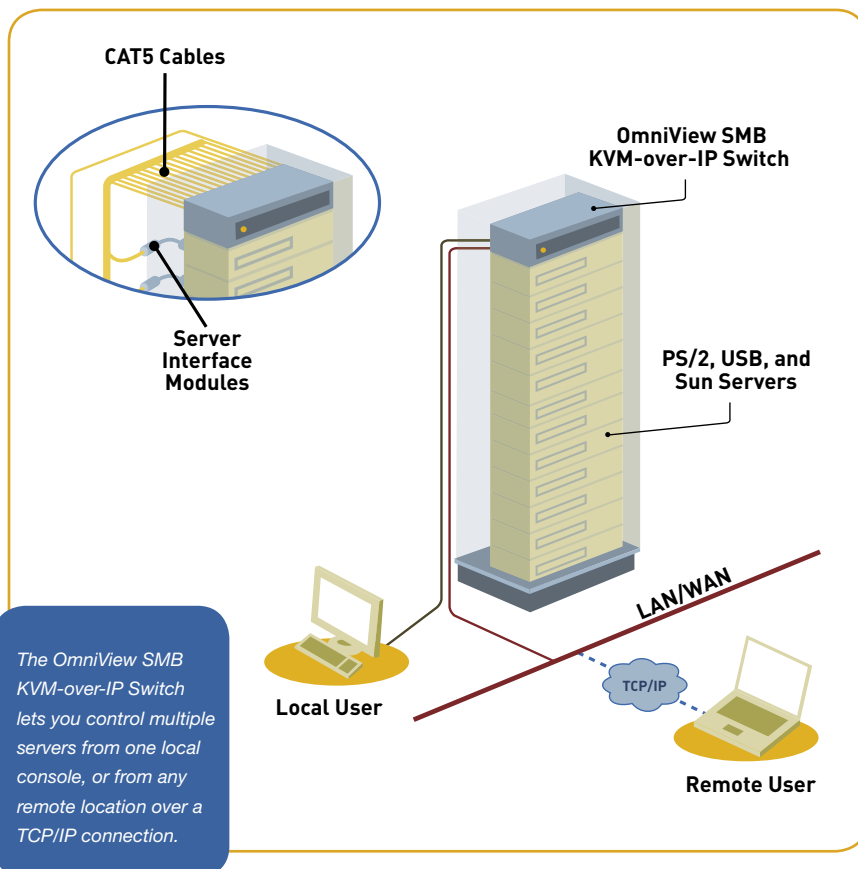
Enterprise performance for an SMB budget

The OmniView SMB KVM-over-IP Switch provides enterprise-class remote server management at a small business price. The Switch enables network administrators to monitor and control their servers from anywhere, at anytime. This round-the-clock remote access lets you troubleshoot servers faster and more efficiently, dramatically reducing server downtime and service costs. The OmniView SMB KVM-over-IP Switch helps you maximize your existing IT resources and integrates seamlessly into your network's infrastructure. Designed to grow along with your server network, the Switch expands to support up to 256 servers via daisy-chaining.

The OmniView SMB KVM-over-IP Switch features built-in CAT5 technology to provide simplified deployment and reduced cable bulk. Compact Server Interface Modules with keep-alive intelligence allow your servers to continue running in the event of power loss to the Switch or when replacing cabling.

REMOTE MANAGEMENT

Features	Benefits
1 Digital or 1 Local User	Enables remote and local control of servers
Web-Browser-Based	Lets you access servers over a TCP/IP connection using a standard web browser
BIOS-Level Access	Provides remote access to server's BIOS to make changes and reboot servers
Enhanced Security	128-bit SSL encryption protects data transferred over the Internet
User-Friendly Interface	Provides quick setup and easy access to servers
Serial-Device Support	Lets you control power distribution units to perform hard reboots remotely
Digital Collaboration	Enables up to 8 users to simultaneously view digital video for collaborative troubleshooting
No Software Required	Simplifies deployment and installation and eliminates costly licensing fees

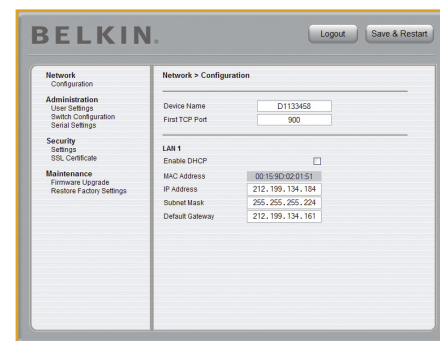


Other Features

- **CAT5 Cabling** – reduces cable bulk and simplifies deployment
- **Keep-Alive Intelligence** – allows servers to continue running if power is lost to Switch or cabling is replaced
- **CAT5 Extension Technology** – allows servers to be placed up to 100 ft. (30.5m) from Switch
- **KVM Expansion** – daisy-chains with OmniView SMB and PRO2 KVM Switches to support up to 256 servers
- **Multi-Platform Support** – provides support for PS/2, USB, and Sun servers
- **Flash-Upgradeable Firmware** – ensures compatibility with the latest hardware

Specifications

Model No.	F1DP108G	F1DP116G
No. of Users Supported	1 digital or 1 local	1 digital or 1 local
No. of Servers Supported	8 (248 total)	16 (256 total)
Daisy-Chain	Maximum of 16 Switches*	Maximum of 16 Switches*
Enclosure	Metal with plastic faceplate	Metal with plastic faceplate
Dimensions	17.25 (W) x 1.75 (H) x 7.5 (L) in. (438 x 45 x 190mm)	17.25 (W) x 1.75 (H) x 7.5 (L) in. (438 x 45 x 190mm)
Weight	5.0 lbs. (2.3kg.)	5.0 lbs. (2.3kg.)
Power/Environment		
Power Requirements	100–240VAC @ 47–63Hz	
Operating Temperature	32° to 104° F (0 to 40° C)	
Storage Temperature	-4° to 140° F (-20 to 60° C)	
Hardware Supported		
Monitors	VGA	
Keyboards/Mice	PS/2	
Video Resolution	Local analog port: 1600x1200 @ 75Hz Digital port: 1600x1200 @ 75Hz	
Operating Systems	Windows® NT®, 2000, XP, Server 2003; DOS; Linux® 8.x and above; Sun™; Novell® 5.x; Solaris™ 8.x and above	
Network Connection		
Ethernet Port	RJ45 (10/100Base-T connection)	
Typical Bandwidth	0.31Mbps**	
Browsers Supported	Microsoft® Internet Explorer 6.0 and above with ActiveX® support	
Ports		
Local Console	HDDDB15 (VGA), MiniDIN6 (PS/2)	
Servers	RJ45	
Serial Device	RJ45	
Flash Upgrade	RJ11	
Power	IEC	
Warranty		
2 years		

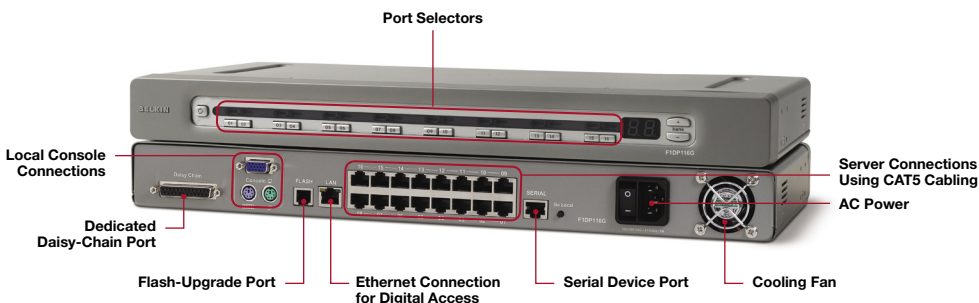


Web-Based User Interface

Provides quick setup and configuration, and easy access to servers using your web browser.

*May be daisy-chained with up to 15 OmniView SMB and PRO2 KVM Switches. OmniView SMB KVM-over-IP Switches may not be daisy-chained together.

**Typical bandwidth is defined as typical "non-intensive" administrative use at 16-bit color, 1024x768 resolution.



Package Contents

- OmniView SMB KVM-over-IP Switch
- Rack-Mount Brackets with Screws
- IEC Power Cord
- DB9-to-RJ45 Serial Cable
- DB9-to-RJ11 Flash-Upgrade Cable
- User Manual
- Quick Installation Guide

Server Interface Module

Connects your server to the Switch using CAT5 cabling. Emulates keyboard and mouse signals to keep servers running if power is lost to Switch. Includes 6-foot CAT5e patch cable. One module is required per server.

Specifications



Model No.	F1DP101A-AP	F1DP101A-AU	F1DP101A-AL
Dimensions	1.8 x 3.5 x 0.9 in. (46 x 89 x 23mm)	1.8 x 3.5 x 0.9 in. (46 x 89 x 23mm)	1.8 x 3.5 x 0.9 in. (46 x 89 x 23mm)
Weight	0.25 lbs. (0.11kg.)	0.25 lbs. (0.11kg.)	0.25 lbs. (0.11kg.)
Power	Via attached server	Via attached server	Via attached server
KVM Connection	RJ45	RJ45	RJ45
Keyboard/Mouse Connection	MiniDIN6 (PS/2)	USB Type A	MiniDIN8 (Sun)
Video Connection	HDDDB15 male (VGA)	HDDDB15 male (VGA)	HDDDB15 male (VGA)

Part Number	Description	MSRP
F1DP108G	OmniView SMB 1x8 KVM-over-IP Switch	\$999.99
F1DP116G	OmniView SMB 1x16 KVM-over-IP Switch	\$1,299.99
F1DP101A-AP	OmniView SMB Server Interface Module, PS/2	\$79.99
F1DP101A-AU	OmniView SMB Server Interface Module, USB	\$79.99
F1DP101A-AL	OmniView SMB Server Interface Module, Legacy Sun	\$79.99
F1DP101A-AP-8PK	OmniView SMB Server Interface Module, PS/2 (8-Pack)	\$349.99

Note: Specifications are subject to change without notice.

BELKIN[®]
www.belkin.com

Belkin Corporation
310-898-1100
Los Angeles, CA 90220, USA

Belkin Ltd.
+44 (0) 1933 35 2000
Rushden, United Kingdom

Belkin Ltd.
+61 (0) 2 4372 8600
Tuggerah, Australia

Free Manuals Download Website

<http://myh66.com>

<http://usermanuals.us>

<http://www.somanuals.com>

<http://www.4manuals.cc>

<http://www.manual-lib.com>

<http://www.404manual.com>

<http://www.luxmanual.com>

<http://aubethermostatmanual.com>

Golf course search by state

<http://golfingnear.com>

Email search by domain

<http://emailbydomain.com>

Auto manuals search

<http://auto.somanuals.com>

TV manuals search

<http://tv.somanuals.com>