

DP-H1

USER GUIDE



beyonwiz
Invent Your Future

Welcome Message

Thank you for choosing a DP-H1, the high-definition media player.

The DP-H1 supports the features of the conventional digital broadcasting receiver (STB, Set-top Box), but also all the ways of watching the multimedia content with your PC and Internet; the USB (Universal Serial Bus) ports and the networking feature combining with DivX playback, you can play any multimedia content in any storage device with no external device. With a DP-H1, you don't need to bring your PC to your living room any more. The DP-H1 supports PVR (Personal Video Recorder) features such as recording and time-shifting with an optional USB storage. You will share valuable time and experience with your family.

To enjoy all the new features of the DP-H1, please make sure that the latest firmware is installed on your system. In the new firmware, new features which are not described in this manual can be added and some features described in this manual can be altered or removed for the best performance and users' experiences.

Please visit our website, www.beyonwiz.com.au, to get new information of the firmware and features.

Precaution

Read this manual carefully before using this product. The cautions described below contain important information about safety, and are categorized into: Danger, Warning and Notice. The company will not be responsible for accidents or damage resulting from careless handling by the user.



If the user mishandles the product, there is loss of life risk or critical injury.

- Connect the power cord only to A/C outlets as specified by the user manual or product specification. If the power cord is connected to a non-specified A/C outlet, it can result in fire or electric shock.
- The product must not be exposed to water or liquid of any kind, or be exposed to drips or splashes. It can result in fire or electric shock.
- Do not place heavy objects, including the product itself, on top of the power cord. If it is damaged, it can result in fire or electric shock.
- Do not place metal objects on top of the apparatus. If metal objects fall onto the apparatus, it could result in fire or electric shock.
- Do not repair, disassemble or modify this apparatus yourself. It can cause fire or electric shock. If internal checking or maintenance is needed, please contact your service center or agency.
- Do not block or cover any ventilation opening. A fire can result from overheating.
- Turn off and unplug the power as quickly as possible during electric storms. Failure to do so can result in fire or electric shock.
- Remove the antenna's power plug from the outlet as quickly as possible during electric storms. Failure to do so can result in fire or electric shock.
- Do not drop the apparatus (for example by putting it in a place where it may fall) or subject it to impact. The product might be damaged. If it is damaged, please turn off the power and remove the plug from the power outlet, fire or electric shock may occur.
- Never touch the power cord with wet hands. It can result in an electric shock.

⚠ WARNING

If the product is mishandled, the user might receive a serious or minor injury. Damage or loss to the user's property may also occur.

- The product must not be exposed to water or liquid. If the apparatus is exposed to drips or splashes, it might cause a problem that may not be repairable.
- Do not repair, disassemble or modify this apparatus yourself. It can be seriously damaged, possibly beyond repair.
- Turn off the power and unplug the power cord as quickly as possible during electric storms. The apparatus may be damaged.
- Remove the antenna's power plug from the outlet as quickly as possible during electric storms; otherwise the apparatus might be damaged.
- Data recorded in the USB HDD may be lost due to a shock, lightning or electricity failure. The user must back up his or her own data, and the company does not take any responsibility for failure to do so.

⚠ NOTICE

If the product is mishandled, it might cause minor damage.

- If the apparatus becomes marked, clean it gently with a soft cloth or towel. Never use chemical solvents such as benzene, thinner, acetone or other solvents. The surface of the apparatus might become discolored and the paint might peel.
- Do not place or keep the apparatus in the following situations. Doing so might cause problems.
 - Where it is too hot or cold.
 - Where there is high humidity.
 - Where there are excessive temperatures, for example in front of air-conditioners or heating vents.
 - Where there is dust or soot.
 - In confined areas where the heat cannot be released.
 - Where it is exposed to direct sunlight.
- Turn the apparatus off and unplug the power cord if the unit is to be unused for a long period of time.
- Do not place heavy objects on top of this apparatus. It might cause malfunction or damage.
- If the apparatus is so seriously damaged that it cannot be repaired, or has stopped working altogether, dispose of it properly in accordance with the local laws or regulations in your area.



This symbol is intended to alert the user to the presence of uninsulated "dangerous voltage" within the product's enclosure that may be of sufficient magnitude to constitute a risk of electric shock to persons.



This symbol is intended to alert the user to the presence of important operating and maintenance (servicing) instructions in the literature accompanying the appliance.

Copyright

This manual is protected by copyright laws.

Copy, use, reproduction of this manual in part or whole without beyonwiz's prior written permission is prohibited.

Disclaimer

The manufacturers, distributors and agents are not liable to any kind of damage caused by the use of the information contained in this manual.

The instruction and descriptions which this manual contains are based on the time of this manual's production.

The manufacturer constantly updates it with new functions and technology.

All the specifications are subject to change without prior notice.

Trademarks

HDMI, the HDMI logo and High-Definition Multimedia Interface are trademarks or registered trademarks of HDMI Licensing LLC.

Manufactured under the license from Dolby Laboratories.

"Dolby" and the "double-D" symbol are trademarks of Dolby Laboratories.

The USB-IF Logos are trademarks of Universal Serial Bus Implementers Forum, Inc.

This page intentionally left as blank.

Contents

Welcome Message	i	4. Quick Setup	17
Precaution	ii	1. Start Quick Setup	17
1. Package Contents	1	1-1. Quick Setup of Video Output Format	18
2. Introduction	3	1-2. Basic Operation	19
1. DP-H1 Highlights	3	2. Configuration	22
2. Front Panel	4	2-1. Time Setting	22
3. Rear Panel	4	2-2. A/V Output Setting	24
4. Front Display Window	5	2-3. Service Scan	27
5. Remote Control	6	3. Network	29
5-1. Operating DP-H1	6	3-1. Ethernet Setting	29
5-2. Operating TV set	7	3-2. Automatic Configuration	30
5-3. Remote Control HEXA Code	9	3-3. Manual Configuration	31
3. How to Connect	11	3-4. Ice Guide	32
1. A/V Connection	11	3-5. WizPNP	33
1-1. Video Connection	11	3-6. Windows Sharing	34
1-2. Audio Connection	12	5. STB & PVR Function	35
2. Antenna Connection	12	1. Basic STB Function	35
3. Ethernet Connection	13	1-1. Service Change	35
3-1. Connection Using a Network Router	13	1-2. Information Box	38
3-2. Direct Connection to the PC	14	1-3. Volume Level Adjust	39
3-3. Direct Connection to Internet	15	1-4. Soundtrack Change	39
		1-5. Subtitle and Teletext Service	40
		1-6. Sleep Timer	41

2. Service Edit	42	7. File Management	77
2-1. Service List Edit	42	1. Rename	77
2-2. Favorite Group	43	2. Delete	78
3. PVR Functions	45	3. Backup to USB Storage	79
3-1. Time-shifting	45	4. Backup to PC via Network	82
3-2. A-B Repeat	47	5. Edit Recording File	83
3-3. Instant Recording	48	8. Internet Service	85
3-4. Timer	52	9. Advanced Setup	87
3-5. Recording Conflict	56	1. Miscellaneous	87
4. EPG (Electronic Program Guide)	59	1-1. Favorite	88
4-1. EPG with Multiple Services	59	1-2. OSD	90
4-2. EPG with Single Service	60	1-3. Access Control	91
4-3. Service Change and Recording	61	1-4. Preference	92
6. File Playback Function	63	2. Management	93
1. Exploring Contents	63	2-1. F/W Upgrade	93
2. Contents Playback	68	2-2. HDD	96
2-1. Movie Playback	68	2-3. Initialize	98
2-2. Music Playback	72	10. Troubleshooting Guide	99
2-3. Photo Playback	73	Specification	a
2-4. Play-list	74	Warranty Conditions	b
		WEEE Information	c
		Contact Beyonwiz	d

This page intentionally left as blank.

1. Package Contents

The following elements are included in the gift box.

Please check all package contents before using your product.

- DP-H1



- Remote Control



- Batteries of the Remote Control (AAA size x2)



- User Manual



- RCA Audio/Video Cable



- Component (Y/Pb/Pr) Video Cable



- Ethernet Cable



This page intentionally left as blank.

2. Introduction

1. DP-H1 Highlights

As a HD (High Definition) media player, the DP-H1 supports various ways of connecting to HD TVs and audio systems; HDMI port combining with HD video decoders, which support MPEG-2, MPEG-4, H.264 and WMV9, give you the true HD digital A/V environment. Moreover, by supporting USB host ports and networking, the most frequently used ways of sharing contents, the DP-H1 gives unlimited flexibility to access and play multimedia content.

Tuner	DVB-T Compliant
Video Output	Composite, S-Video, Component (Y, Pb, Pr), HDMI
Audio Output	5.1ch RCA Dolby Digital decoding Coaxial and Optical S/PDIF Output, HDMI
Interface	10/100 Ethernet Port 2 USB Host Ports (USB 2.0 Compliant)
Multimedia Playback	Movie: wmv, avi, mpg, vob, mp4, asf, tp, trp Music: mp3, wma, aac, ac3 Photo: bmp, jpeg, png

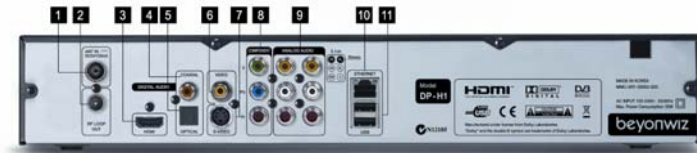
2. Front Panel

Five buttons are placed on the front panel.

- **STANDBY Button:** it switches the DP-H1 between the operation and standby modes.
- **CHANNEL Buttons:** the top and bottom parts of the circular button work as the channel-up and channel-down buttons.
- **VOLUME Buttons:** the left and right parts of the circular button work as the volume-down and volume-up buttons.



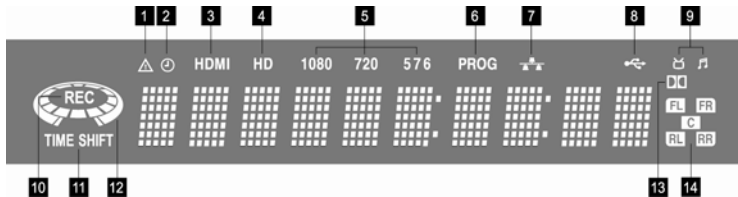
3. Rear Panel



- | | | |
|-----------------|------------------------|-----------------|
| 1. ANT IN | 5. OPTICAL AUDIO | 9. 5.1 CH AUDIO |
| 2. RF LOOP OUT | 6. COMPOSITE VIDEO | 10. ETHERNET |
| 3. HDMI | 7. S-VIDEO | 11. USB |
| 4. COXIAL AUDIO | 8. COMPONENT (Y/Pb/Pr) | |

4. Front Display Window

The front display window gives you easy way to check the status of the DP-H1.



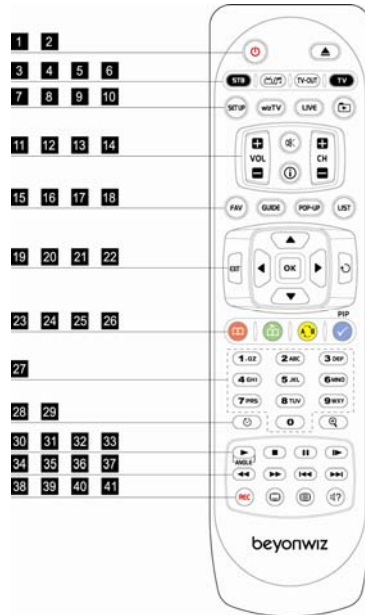
1		Lights when there is no time information.
2		Lights when a timer recording is programmed in standby mode.
3	HDMI	Lights when the signal comes out via HDMI.
4	HD	Lights when the signal is HD (High Definition).
5	1080 720 576	Indicates the resolution of video output.
6	PROG	Lights when the video output is in Progressive Scan mode.
7		Lights when Ethernet connection is set up and enabled.
8		Lights when USB devices or memory cards is connected.
9		Indicates operation mode (TV or Radio).
10		Indicates the current recording status.
11	TIME SHIFT	Lights when Time Shift is enabled.
12		Indicates playback of content with light on the outer circle and revolving on the inner circle.
13		Indicates the audio format of content.
14		Lights on FR and FL when the audio output is set to stereo. Lights on all indicators when the audio output is 5.1CH. No light when the audio output is Pass-through.

5. Remote Control

5-1. Operating DP-H1

In order to operate the DP-H1 with the enclosed remote control, please select **STB** mode by pressing the **STB** button. The red backlight beneath the **STB** button lights when you press a button in this mode.

The below picture and right table show the function of each button on the remote control.



1	STANDBY	Switch the DP-H1 between Operation and Standby mode.
2	N/A	Left for later use.
3	STB	Set Remote Control to Work for the DP-H1.
4	TV/RADIO	Change to TV mode or Radio mode.
5	TV-OUT	Change Video Output. (Refer to page 17. for more information)
6	TV	Control standard TVs with remote control.
7	SETUP	Go to SETUP Menu.
8	WizTV	Go to Internet Service. (for future use)
9	LIVE	Go to Live TV.
10	File PLAY	Go to File Play.
11	VOL +/-	Adjust the volume. (Increase/Decrease)
12	CH +/-	Change TV or Radio Service.
13	MUTE	Enable or disable the Audio output.
14	INFO	Show service information.
15	FAV	Show Favorite Service List.
16	GUIDE	Show EPG (Electronic Program Guide).
17	POP-UP	Show advanced menus of the current mode.
18	LIST	Show Service List.
19	EXIT	Return to the previous menu or Cancel.
20	UP/DOWN/LEFT/ RIGHT	Move the indicator on the menu mode.
21	OK	Select an item on the menu or Confirm.
22	RECALL	Recall the previously viewed (or listened) service.
23	RED	Optional key for Teletext service
24	GREEN	Optional key for Teletext service
25	YELLOW	Optional key for Teletext service
26	BLUE	Check an item whilst selecting another on the same step.
27	0-9	Numeric buttons.
28	SLEEP	Set sleep time of the DP-H1.
29	ZOOM	Zoom-in or Zoom-out.
30	PLAY	Play Content.
31	STOP	Stop playback.
32	PAUSE	Pause playback.
33	SLOW FWD	Slow Forward.
34	REW	Rewind.
35	FF	Fast Forward.
36	PREV	Go to the previous track or file, and continue playing.
37	NEXT	Go to the next track or file, and continue playing.
38	REC	Start recording.
39	SUBTITLE	Change Subtitle language.
40	TELETEXT	Show Teletext.
41	SOUNDTRACK	Change Soundtrack language.

5-2. Operating TV set

The enclosed remote control can also be used to control a TV set provided by major TV manufacturers. In order to operate a TV with the enclosed remote control, please select **TV** mode by pressing the **TV** button. The red backlight beneath the **TV** button lights when you press a button in this mode.

There are two ways to program the remote control to work with your TV, automatic code search or manual set.

1) Automatic Code Search

Please turn on your TV then press and hold the **TV** button until the red-backlight turns on. Please point the remote control at your TV and click the **UP** button. After the red-backlight of the **TV** button blinks, please wait at least 3 seconds to check your TV turns off or not. If your TV turns off automatically, your remote control is ready to use for your TV. If your TV does not turn off, please repeat clicking the **UP** button until your TV turns off. Once your TV turns off after you click the **UP** button, please press the **OK** button. The **TV** button blinks three times to indicate that the remote control is set.

2) Manual Set

You can set your remote control with 3-digit code manually. Please look at the following table and find the brand of your TV.

Turn on your TV then press and hold the **TV** button until the red-backlight turns on. Please point the remote control at your TV and enter the 3-digit code with the **NUMERIC** buttons. Wait until the red-backlight blanks three times. If your TV turns off automatically, your remote control is ready to use for your TV. If your TV does not turn off, press the **TV** button and enter another code from the table under that brand.

FUJITSU	208	223	224	218	253
	261	286	307	325	329
	410	422	423		
HITACHI	206	207	208	215	218
	229	231	232	236	238
	240	244	253	256	286
	287	292	298	299	300
	301	304	305	306	307
	309	3123	314	315	316
	317	325	358	367	381
	382	383	384	399	405
	406	407	410	411	

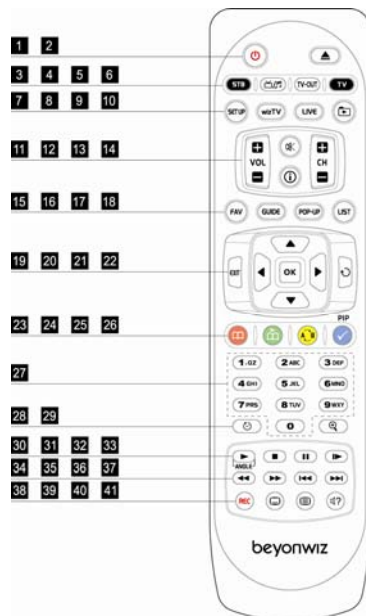
JVC	207	212	247	264	323
	385				
LG	208	215	224	229	253
	286	307	344	374	385
	387	410	412		
NEC	205	207	208	215	224
	229	248	253	286	389
PANASONIC	208	210	211	212	213
	214	216	220	230	236
	237	239	242	244	245
	255	258	260	278	279
	286	307	309	384	410
PIONEER	208	244	246	286	287
	307	374	376	380	410
SAMSUNG	205	206	208	209	215
	216	218	224	229	253
	260	270	277	286	287
	296	325	337	374	410
	412				
SHARP	207	209	230	245	384
SONY	206	207	208	225	230
	264	272	285	286	329
	424	426	430		
THOMSON	208	258	286	345	405

NOTE

- If your TV brand is not listed on above, please visit the following website to get the correct code if available: www.beyonwiz.com.au.
- Your remote will not always be compatible with all branded televisions. If this remote doesn't work or no code exists, please obtain the original remote from the manufacture of your TV.

5-3. Remote Control HEXA Code

The below picture and right table inform you to set your own remote control to operate the DP-H1. The coding system used for the DP-H1 is the NEC type.



1	STANDBY	0xBE000AF5
2	EJECT	0xBE0040BF
3	STB	N/A
4	TV/RADIO	0xBE0055AA
5	TV-OUT	0xBE0042BD
6	TV	N/A
7	SETUP	0xBE0007F8
8	WizTV	0xBE0052AD
9	LIVE	0xBE0008F7
10	FILE PLAY	0xBE0044BB
11	VOL +/-	0xBE0002FD 0xBE0003FC
12	CH +/-	0xBE0000FF 0xBE0001FE
13	MUTE	0xBE000CF3
14	INFO	0xBE000DF2
15	FAV	0xBE0009F6
16	GUIDE	0xBE0043BC
17	POP-UP	0xBE001AE5
18	LIST	0xBE004CB3
19	EXIT	0xBE001CE3
20	UP/DOWN/ LEFT/RIGHT	0xBE004EB1 0xBE004FB0 0xBE0053AC 0xBE0054AB
21	OK	0xBE001FE0
22	RECALL	0xBE001EE1
23	RED	0xBE004DB2
24	GREEN	0xBE000DF2
25	YELLOW	0xBE000EF1
26	BLUE	0xBE000FF0
27	0/1/2/3/4/ 5/6/7/8/9	0xBE0010EF 0xBE0011EE 0xBE0012ED 0xBE0013EC 0xBE0014EB 0xBE0015EA 0xBE0016E9 0xBE0017E8 0xBE0018E7 0xBE0019E6
28	SLEEP	0xBE001BE4
29	ZOOM	0xBE0050AF
30	PLAY	0xBE004BB4
31	STOP	0xBE004AB5
32	PAUSE	0xBE0046B9
33	SLOW FWD	0xBE0006F9
34	REW	0xBE0045BA
35	FF	0xBE0048B7
36	PREV	0xBE0004FB
37	NEXT	0xBE0005FA
38	REC	0xBE005EA1
39	SUBTITLE	0xBE0047B8
40	TELETXT	0xBE0051AE
41	SOUNDTRACK	0xBE0049B6

This page intentionally left as blank.

3. How to Connect

1. A/V Connection

Depending on your A/V equipment including TV which you would like to connect to, there are various ways you can connect the DP-H1 and A/V equipment. To make the best connections, please refer to the manual of your TV, stereo system or other equipment which you would like to connect to.

To get High Definition playback of High Definition content, we recommend you to connect your High Definition display with a HDMI cable. HDMI supports Standard, Enhanced or High-Definition Video and Multi-Channel Audio in a single cable. (HDMI cable can be purchased separately)

If your TV does not support HDMI but has a DVI input, a HDMI to DVI converter can be purchased separately. (In this case, Audio signal output is disabled)

If you do not have a High Definition display, you can connect the DP-H1 and A/V equipment via other connection options.

1-1. Video Connection

To connect your DP-H1 to your TV or display, you have the following options;

Only one connection can be done at a time.

The following order of video connection is based on the quality.

- HDMI (the cable can be purchased separately)
- Component (Y/Pb/Pr)
- S-VIDEO (the cable can be purchased separately)
- Composite (VIDEO)



1-2. Audio Connection

To connect your DP-H1 to your TV or audio system, you have the following options;

Only one connection can be done at a time.

- S/PDIF Digital Audio output (COAXIAL, OPTICAL)
- 5.1 CH Analog Audio output



2. Antenna Connection

Please connect your TV Antenna to the DP-H1.

- Antenna In (connecting to the roof Antenna)
- RF LOOP OUT (only for bypassing the signal to another device)



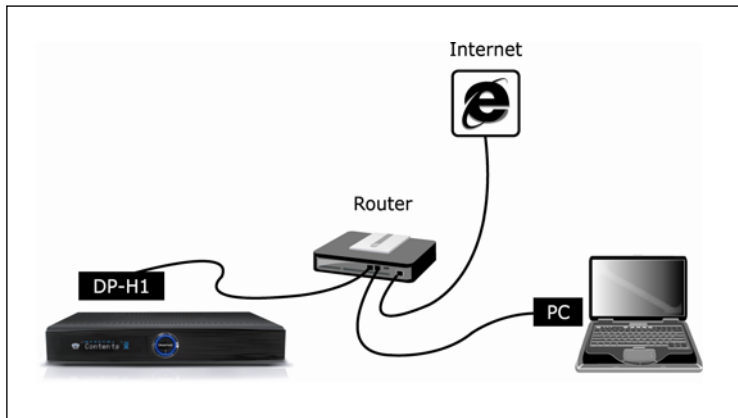
3. Ethernet Connection

3-1. Connection Using a Network Router

In order to utilize the DP-H1 fully, it is strongly recommended to connect the DP-H1 to the home network with a network router.

For this connection, the following equipments are required;

- A router with a built-in network switch.
- An Ethernet cable.
- A PC with Windows XP operating system.

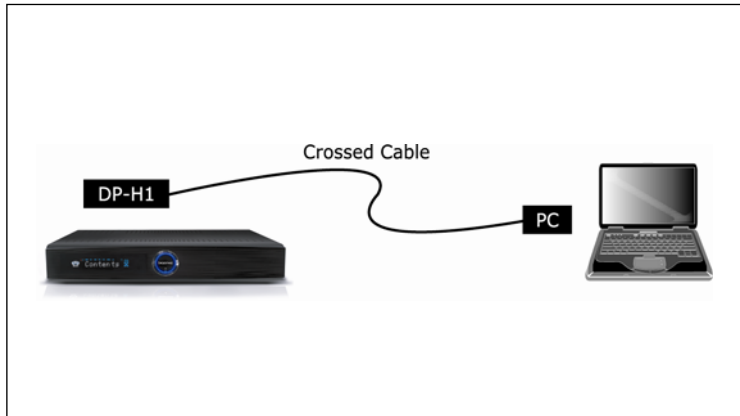


As shown in the picture, you have to connect the DP-H1 to the router with an Ethernet cable included in the box. If you purchase a router with a DP-H1 and have no experience of connecting a router with a PC, please refer to user's manual of the router and connect the DP-H1 to the router as an additional PC. If the router has the DHCP (Dynamic Host Configuration Protocol) server feature and it is enabled, all the configurations for networking will be set automatically and the DP-H1 is ready to use. For more information of configuring LAN, please refer to Chapter 4. Quick Setup, which illustrates how to configure the LAN port.

3-2. Direct Connection to the PC

With this configuration, you can share contents with a PC through home network but the DP-H1 can not access to Internet. For this connection, the following equipment is required;

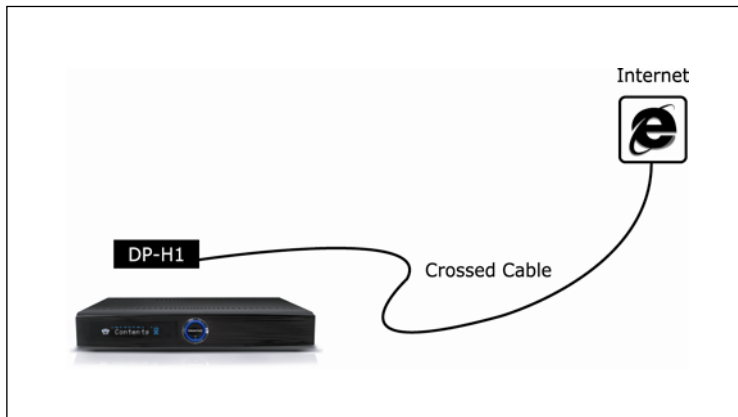
- A PC with Windows XP operating system.
- A crossed Ethernet cable.



If your PC has the DHCP server feature and it is enabled, all the configurations for networking will be set automatically and the DP-H1 is ready to communicate with your PC. If you want to get more information to configure your PC as a DHCP server, please contact Microsoft Corp. If your PC does not have the DHCP server feature, you have to disable the DHCP feature and set IP (Internet Protocol) information manually for the DP-H1 and PC. Chapter 4. Quick Setup, illustrates how to configure the LAN of the DP-H1 manually.

3-3. Direct Connection to Internet

With this configuration, you can not share contents with a PC through home network. For this connection, a crossed Ethernet cable (not included in the box) is required. The most ISP (Internet Service Provider) services DHCP feature. Therefore, you can connect your DP-H1 to Internet with a crossed cable and enjoy it. If you have to configure your DP-H1 manually, please contact your ISP for more information.



This page intentionally left as blank.

4. Quick Setup

This chapter guides you through the basic set up of the DP-H1 so that you can experience its basic feature. In order to enjoy the DP-H1 fully, please refer to Chapter 9. Advanced Setup.

1. Start Quick Setup

If A/V and antenna connection is complete, press the **STANDBY** button to start. The front display window will show "Welcome", "Loading" and "Start" successively.

If you turn on the DP-H1 for the first time after purchasing, there will be no digital broadcasting services stored in the DP-H1, it will switch to SETUP MENU automatically by showing "Service Scan" on the front display window. Otherwise, you can enter SETUP MENU by pressing the **SETUP** button.

If there is a list of the digital broadcasting services stored in the DP-H1, the front display window will display the service name such as "TEN Digital" when it is ready to use.

NOTE

- If the front display shows "Service Scan", you have to scan the broadcasting services first. Please refer to the next section of scanning services.

1-1. Quick Setup of Video Output Format

If the front display window indicates that the DP-H1 is ready to use but nothing displays on the TV screen, you have to adjust the format and resolution of the video output by pressing the **TV-OUT** button. The default video output is in a SD PAL (576i) format. You can switch the video output to a SD NTSC (480i), HD PAL (720p), HD NTSC (720p), HDMI PAL (1080i), HDMI NTSC (1080i), PAL HDMI Auto, NTSC HDMI Auto, HDMI PAL (576p) and HDMI NTSC (480p) format successively with the **TV-OUT** button. Please refer to the following information to adjust the video output to each of the video connection types.

- Composite/S-VHS: SD PAL or SD NTSC
- Component: HD PAL or HD NTSC
- HDMI: PAL HDMI Auto, NTSC HDMI Auto, HDMI PAL or HDMI NTSC

NOTE

- The **TV-OUT** button is developed so that you can configure the video output of the DP-H1 when you can not see anything on the TV screen because the video formats do not match each other.
- Most TV sets support the PAL format in Australia..
- The front display window indicates the current video format as you press the **TV-OUT** button.
- Please allow 3 seconds after pressing the **TV-OUT** button for the configuration change to become effective.
- It is strongly recommended that you again configure the video format more precisely in the Setup menu.

1-2. Basic Operation

1) Enter and Exit Setup Menu

You can enter the SET-UP MENU with the **SET-UP** button on the remote control and exit to the previous operation mode such as LIVE or FILE PLAY with the **EXIT** button.

2) Setup Menu Structure

The SET-UP menu is grouped in four parts: CONFIGURATION, NETWORK, MISCELLANEOUS and MANAGEMENT. Firstly, you have to choose one of these categories (main category) which are placed on the top menu (a horizontal bar) as graphical icons. As you select it with the **LEFT/RIGHT** buttons, the left menu (a vertical bar) displays different sub-categories according to your selection on the top menu. If you choose one category on the left menu with the **UP/DOWN** buttons, the items belong to the sub-category will be listed on the item list. You can enter the item list with the **OK** button to adjust the configuration. In the item list, the **LEFT/RIGHT/ UP/DOWN** buttons will not work for changing your selection on the top or left menus: these buttons are used to choose an item on the item list to change its configuration. You can exit from the item list with the **EXIT** button.



- **LEFT/RIGHT** buttons: Select an item on the top menu. (Horizontal)
- **UP/DOWN** buttons: Select an item on the left menu. (Vertical)
- **OK** button: Enter the item list.
- **EXIT** button: Exit from the item list.

3) How to Change Configuration

In the setup menu, there are several ways to change the configuration. This manual explains how to change the configuration, here are three cases which are used frequently.

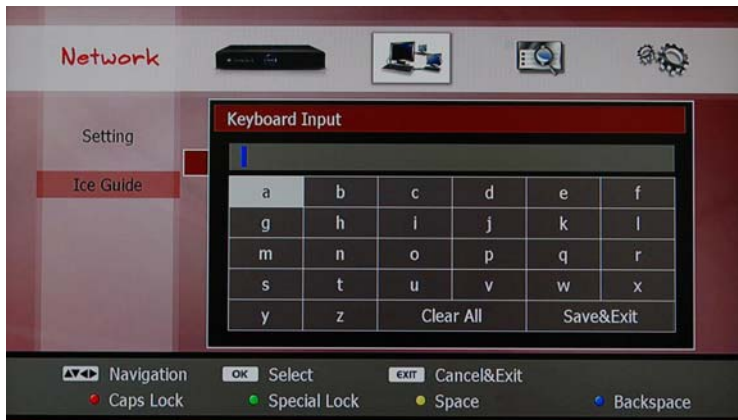
- Selection on a pop-up menu: You can choose an option on the pop-up menu. If you press the **OK** button, the pop-up menu will be displayed. Select one option with the **UP/DOWN** buttons and press the **OK** button. If you do not want to change settings, press the **EXIT** button. The pop-up menu will disappear.



- Setup using the **NUMERIC** buttons: The **NUMERIC** buttons are used to set a configuration with numbers such as time information. You can also move the cursor to left or right with the **LEFT** or **RIGHT** buttons while you are editing the configuration. You can set the change with the **OK** button or cancel it with the **EXIT** button.



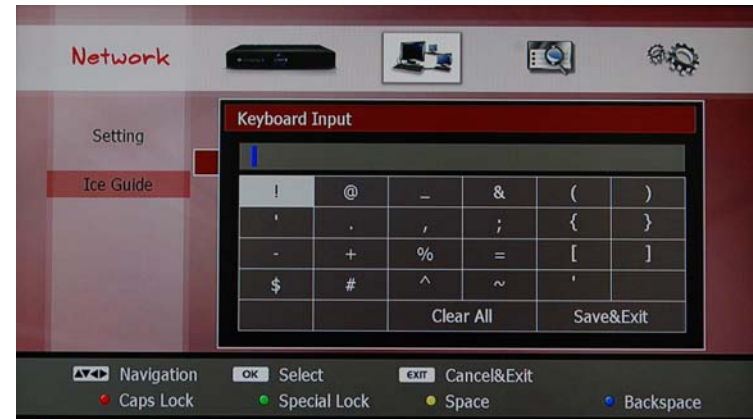
- On-screen keyboard: If you need to input alphabetic characters, an on-screen keyboard will be displayed. You can move the cursor with the **UP/DOWN/LEFT/RIGHT** buttons and select the letters with the **OK** button. The **YELLOW** and **BLUE** buttons work as a space and backspace keys respectively. You can also clear your inputs by selecting "Clear All" with the **OK** button on the screen.



If you need to input upper case characters, please press the **RED** button. The screen keyboard will changed to upper case characters and you can input the same way. You can return to lower case characters with the **RED** button.

If you need to input numbers, please use the **NUMERIC** buttons on the RCU.

If you need to input special characters, please press the **GREEN** button. The screen keyboard turns to special characters. You can also exit and return to small characters with the **GREEN** button.



After the input, you can save it by selecting "Save & Exit" with the **OK** button. If you do not want to save, please press the **EXIT** button.

2. Configuration

2-1. Time Setting

Please set the current date and time. The date and time information will be the reference for the timer recording. Therefore, you have to configure the time and date information precisely. You can also select preferred date and time formats. The following picture illustrates the items which you configure to set the time and date.



- Mode: You can select how to set the date and time. Please press the **OK** button then you get a pop-up menu. You can choose one with the **UP/DOWN** buttons and select it with the **OK** button. Under the "AUTO" mode, the date and time will be set automatically according to the GMT information and the time-offset you configured. To obtain correct time under "auto" mode you must enter the correct time offset from GMT according to what state you are in. Under the "MANUAL" mode, you have to set the date and time manually using the numeric keys.



- Date Format: Please select a display format for the date either "DD/MM/YYYY", "MM/DD/YYYY" or "YYYY/MM/DD" on a pop-up menu. (DD-day, MM-month, YYYY-year)
- Time Format: Please select how to display the time: either a 12-hour format or a 24-hour format. You will get a pop-up menu if you press the **OK** button.
- Time Offset: Time offset means the difference between GMT and your local time zone. For example, the time zone of Sydney, Australia is GMT + 10:00 and +10:00 is the time offset of Sydney. Please press **OK** button to change the time offset. You will get a list of areas as a pop-up menu. You can select an area where you live to set the time-offset. Please add +1:00 for daylight saving time if used in your region.
- Current Time: Under the "AUTO" mode, current date and time will be displayed and you can not change it. Under the "MANUAL" mode, you have to set the date and time information manually. To change the date and time, please press the **OK** button and set with the **NUMERIC** buttons. You can save it with the **OK** button. If you want to modify before you save it, please use the **UP/DOWN/LEFT/RIGHT** buttons to place the cursor on the digit you want to change.

NOTE

- Under the "AUTO" mode, the GMT information can be received automatically from DTV station when you turn on the DP-H1 and watch a program. Please note that some DTV stations don't send the GMT information or send wrong information.
- Your selected date and time format will be applied to all the date and time displayed on the graphical menus.
- Time offset is activated under the "AUTO" mode only.

2-2. A/V Output Setting

You have to set the video and audio configuration according to your TV set. Please make sure the video and audio port of the DP-H1 is connected to your TV set.

The A/V Output menu consists of two parts; the video output and the audio output. You can change the configuration of the video and audio outputs with pop-up menu. Please press the **OK** button to get a pop-up menu for each item.



1) Video Outputs

- **Current Video Mode:** It indicates the video output format as you configure the video output mode.
- **TV Aspect Ratio:** Please select either 4:3 or 16:9 according to your TV screen ratio.
- **16:9 Display format:** You have two options to display picture in 16:9 format on your 4:3 TV set: Letter Box or Pan&Scan.
 - **LetterBox:** You can see the full screen of 16:9, but the top and bottom edges of your screen display black horizontal pillars.



- Pan&Scan: The picture is displayed in full on your 4:3 TV screen, but left and right sides of the original picture cannot be displayed.



- Video Type: You can select either PAL for NTSC format. Most TV sets support the PAL format in Australia.
- Component Video: It is recommended to set the resolution of component video output to fit to your TV set for the best quality display. Please check the manual of your TV set to get the maximum resolution for the component video input.
- HDMI Video: If you set the HDMI output as Auto, the DP-H1 configures the best format of HDMI suitable for your TV set automatically. But some TV sets do not support the auto-configuration function. In this case, you have to set the resolution manually: 480p, 576p, 720p or 1080i. Please check the manual of your TV set to get the maximum resolution for the HDMI video input.

NOTE

- The component video output supports SD (576i for PAL and 480i for NTSC), 480p, 576p, 720p and 1080i.
- If you set the video output resolution as HD (more than 576p), the composite and S-Video outputs will be disabled automatically.
- Please note that your TV set can not display anything if you set the resolution of the video outputs higher than the maximum resolution that your TV set can accept.
- The HDMI setting, outputs the audio in digital format as well.

2) Audio Outputs

The DP-H1 supports 5.1ch audio in an analog format. It has Dolby Digital stereo decoder so that it can decode and output the Dolby sound through the RCA connectors. It also supports digital outputs with optical and coaxial ports.

- **Audio Format:** If you only have a stereo speaker system, you have to set the audio format as 2ch. If you connect a 5.1ch speaker system to the DP-H1, choose 5.1ch for the best performance. In order to decode an audio source with an external audio decoder system, set the audio format as pass-through.
- **S/PDIF Output:** Enables the digital audio output through the coaxial and optical ports.

NOTE

- If you set the audio format as 2ch, the DP-H1 mixes down 5.1ch audio source to 2ch audio.
- If the content of a channel broadcasted has 2ch audio source, the DP-H1 can not expand the 2ch audio source to 5.1ch audio format. Therefore, you can only hear sound from the front speakers even though you have connected a 5.1ch speaker system and set the DP-H1 as 5.1ch audio.
- Unless you set the audio format as 2ch when you connect stereo speakers to DP-H1, you can not hear sound of 5.1ch source properly.
- Because the DP-H1 support Dolby Digital stereo decoding, it mixes down the 5.1ch audio source in the Dolby Digital format to 2ch audio even though you set the audio format as 5.1ch.

2-3. Service Scan

Before watching a broadcasted program, you need to scan all the services first. The scanned services will be stored in the non-volatile memory. Therefore you don't have to scan the service again unless you delete all the information of the service stored in the memory. If there are no services scanned previously, the service scan page will be presented automatically.



You can select the options for each item with a pop-up menu. Please press the **OK** button to get a pop-up menu.

- Antenna DC (+5V) Power: You can supply DC (+5V, max. 100mA) power to the indoor antenna through the antenna cable. Please make sure that your external antenna is an active type, which means that the antenna requires external DC power to enhance the sensitivity, before you supply DC power to the antenna.
- Scanning Range: You can scan over all channels (VHF and UHF) by selecting the "FULL" option. If you want to scan over specific channel(s), please select the "PARTIAL" option. In this case, you have to set the start and end channels manually.
- Start Channel: This menu will be enabled when you choose the "PARTIAL" option. Please press the **OK** button to select the start channel.
- End Channel: This menu will also be enabled when you choose the "PARTIAL" option. The end channel must be greater than the start channel.
- Signal Quality Bar: Two horizontal bars indicate the signal quality of the start and end channels. The leftmost rectangular changes from black to yellow if the tuner locks the signal properly.



- IF THE ANTENNA IS PASSIVE TYPE, THE DC POWER WILL DAMAGE THE ANTENNA AND THE DP-H1 ITSELF.

- **Start Scan:** After selecting your scanning range, you can “start scanning”. Select Start Scanning and then press the **OK** button. On the screen, the scanning window appears and displays the process.



Now, you are ready to watch live television by pressing the **LIVE** button.

NOTE

- You can not select an end channel smaller than the start channel.
- If you scan over all the channels with the “FULL” option, the previous service information including the service list information and your favorite lists will be erased automatically.
- If the full-scanning operation performs, the timer sets will be removed.
- If you scan over specific channel(s) with the “PARTIAL” option, you can add the new service to your previous channel list.

3. Network

The DP-H1 supports an Ethernet interfaces. This section will guide you how to configure the network interfaces.

3-1. Ethernet Setting

The first step is to enable the Ethernet interface. You can select this in the Network Device menu. You will get a pop-up menu by pressing the **OK** button. If you want to use the Ethernet interface, please select the "LAN" option. If you select "Disable" option, the Ethernet interface will be disabled even though you configure it properly.



3-2. Automatic Configuration

If you enable the Ethernet interface by selecting the "LAN" option on the "Network Device" menu, all the items to be configured for the Ethernet interface will be displayed.



You can also get the pop-up window and check the current effective configuration of the Ethernet interface with the **GREEN** button.

- DHCP: If you want to get the all the configuration from the router and set automatically, please select the "Enable" option. In this case, the rest of the items are disabled to select because you don't have to configure them manually. You can apply the change by pressing the **RED** button. A pop-up window displays the effective configuration of the Ethernet interface when you press the **RED** button.

3-3. Manual Configuration

If you select the "Disable" option in the "DHCP", you have to input the IP address manually.

- IP Address: You can input the address with the **NUMERIC** buttons and the **LEFT/RIGHT** buttons. You can move to the next item of Subnet Mask with the **DOWN** button.
- You can configure the following items in the same way; Subnet Mask, Gateway, Primary DNS Server IP and Secondary DNS Server IP.



You can apply the changes by pressing the **RED** button. A pop-up window displays the effective configuration of the Ethernet interface when you press the **RED** button.

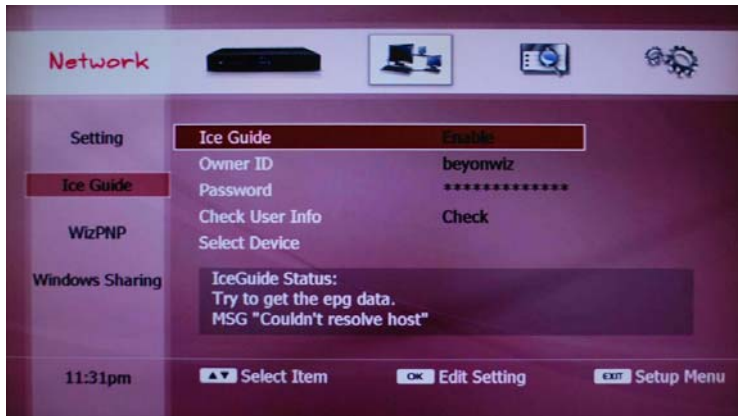
- MAC Address: This will display the MAC address of the Ethernet interface but you can not change it.

NOTE

- You have to press the **RED** button to make your changes and configurations for the network interface to take effect.
- If you set the DHCP function to enable, the rest of the settings can not be changed. However they still have the previous configuration to help you set these easily set the DHCP function is enabled next time.
- The effective configuration of the Ethernet is always displayed as a pop-up window by pressing the **GREEN** button.
- To use the DHCP function for the DP-H1, your router should support the DHCP function. Please check the manual and the configuration of your router.

3-4. Ice Guide

The DP-H1 supports IceTV service through the Internet. If you have an IceTV account, please set your account to utilize the service on your DP-H1.



- Ice Guide: you can setup the way you get the EPG information; if you select "Enable" for this option, the DP-H1 gets and updates EPG with information from IceTV service. If you select "Disable" option, the DP-H1 will update the EPG with the information from the broadcasting station only.

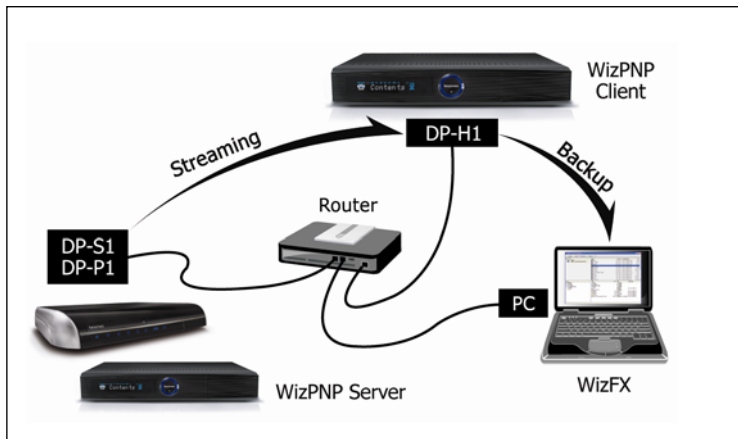
- Owner ID: If you press the **OK** button, on-screen keyboard will displayed and you can enter your ID of IceTV account.
- Password: If you press the **OK** button, the on-screen keyboard will displayed and you can enter your password.
- Check User Info: You can check if your account information is valid or not.
- Select Device: Please select a device which you set on the IceTV website, www.icetv.com.au.

NOTE

- For more information about IceTV, please visit www.icetv.com.au, or refer to Chapter 5. STB & PVR Function and find out how you can utilize the 7-day EPG (Electronic Program Guide) using the IceTV service.
- Most broadcasters don't provide 7-day guide. Therefore we recommend you use IceTV guide if you wish to have a weekly guide.

3-5. WizPNP

The WizPNP enables to share the recording files with other beyonwiz products or PCs.



The above picture illustrates how the WizPNP functions;

If you set the DP-H1 as a WizPNP client, you can access to another beyonwiz product, which enables the WizPNP server, and play recording files on it.

NOTE

- You need an application software for your PC to connect to the DP-H1. Please visit to www.beyonwiz.com.au and download "WizFX" software.
- The WizPNP server can not get a file from a WizPNP client.
- The WizPNP client can play recording files from a WizPNP server. Please refer to Chapter 6. File Playback Function for details.

1) Set as WizPNP Client



You can set the DP-H1 as a WizPNP client; please select the "Client" menu with the **OK** button and select "Enable" with the **OK** button. You can also disable the WizPNP client function by selecting "Disable" with the **OK** button.

3-6. Windows Sharing

You can set account information of the ID and password to share files in the shared folder on your PC, which is blocked to access for the "Guest" account and requires an ID and password to access.



You also have to set account information to backup the recording files on the DP-H1 to the PC via network; the "Guest" account is not allowed to copy files to the shared folder.

5. STB & PVR Function

The DP-H1 supports various ways of enjoying multimedia contents and it groups its features in three parts; the first group is STB (Set-top Box) and PVR (Personal Video Recorder) functions, the second group is file playback functions including playback of recorded programs with PVR function, and the last group is Internet services which will be updated later.

This chapter describes the functions of STB and PVR. You can access this operating with the **LIVE** button on the remote control in any operating mode.

NOTE

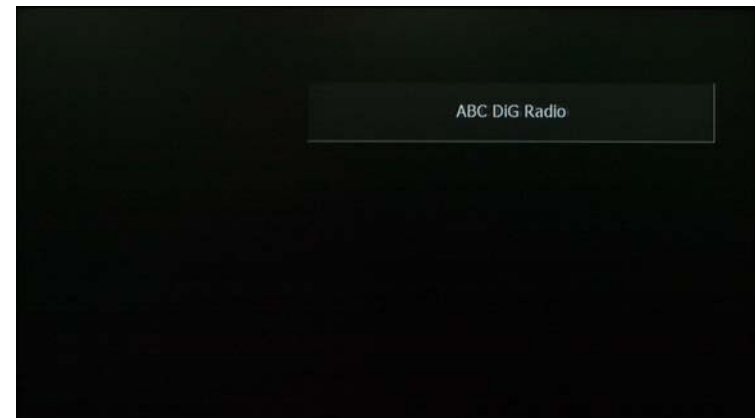
- To enable the PVR functions, an optional USB storage is required, which is not included in the gift box.
- The USB storage should be registered before using the PVR functions. The instruction is described in Chapter 9. Advanced Setup.
- When you register a USB storage, all the data stored in the USB storage will be erased.
- The registered USB storage does not compatible to the Windows operating system. Therefore, you can not use the USB storage for a PC unless you reformat it with your PC.
- The USB storage should be detached properly to prevent the DP-H1 from unstable operation or damage. To detach a USB storage, please refer to Chapter 6. File Playback Function.

1. Basic STB Function

1-1. Service Change

1) Change between TV and Radio Services

You can watch TV services or listen to radio services with the DP-H1. The **TV/RADIO** button changes the operation mode.



2) Change Service with Service List

The service list contains all the broadcasting services you can receive. You can get the service list as a pop-up menu by pressing the **LIST** button and select a service with the **UP/DOWN** buttons.



Only the TV services will be listed under the TV service mode and only the radio services will be listed under the radio service mode. You can check the operating mode from the message placed on the top of the service list: "TV service" or "Radio Service". The **LEFT** and **RIGHT** buttons work as page-up and page-down respectively. If you want to hide the service list menu, press the **EXIT** button.

You can also edit the service list in the list view. This will be explained in the later section.

NOTE

- You can hide the help message and extend the service list with the **RED** button. If you want to display the help message, please press the **RED** button again.

3) Other Ways to Change Service

As in conventional TV sets, you can change a service which you want to watch or listen to in the following ways;

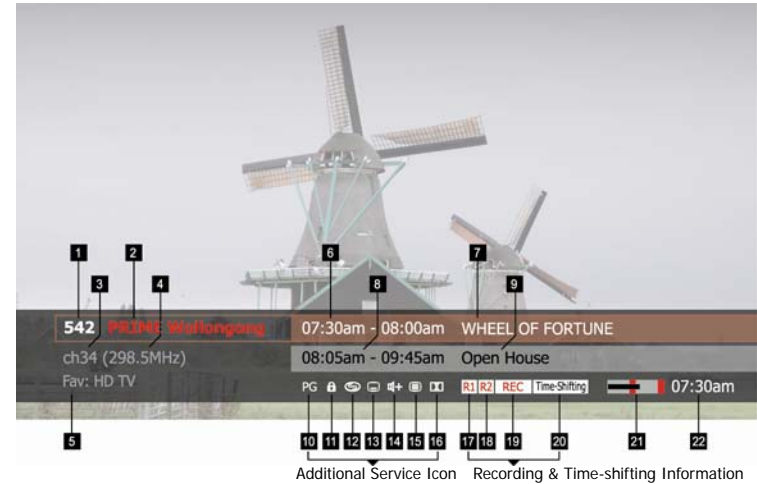
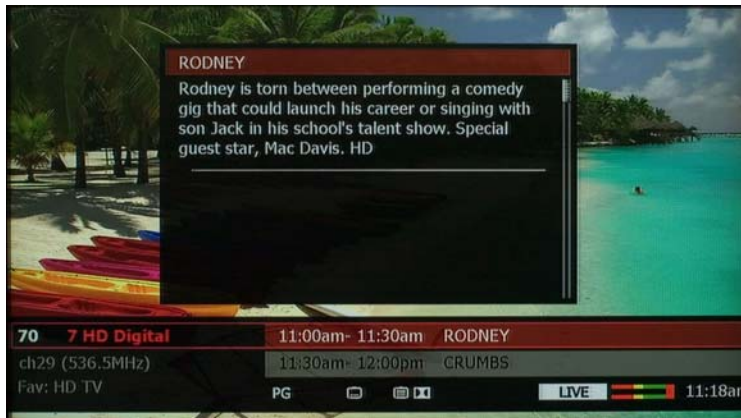
- Service Change with the **CH+ / CH-** buttons: As you press the **CH+** or **CH-** button, the next or previous service will be selected.
- Service Change with Numeric Buttons: You can change to a certain service directly with numeric buttons. For example, if you press 1, 4, and 6 buttons consecutively and then the **OK** button, service 146 will be displayed on the screen.
- Recall the Previously Viewed Service: the **RECALL** button returns to the previously viewed service.

NOTE

- If you change a service continuously with the **CH+** or **CH-** button, only the information box will be changed according to your command: You can watch the changed service 3 seconds after you press the last button.
- To record two programs simultaneously, two tuners are allocated for the recording. Therefore, you can only change to a limited number of services while the two programs are being recorded.
- When selecting channels using the numeric buttons. Make sure you know the channel number you wish to select as all channels fall on a different number in each state. Eg: channel 10 isn't always on number 10 in the digital network.

1-2. Information Box

You can check the information of a service and the program using three information boxes; the information box contains specific information of a current service and program. The extended information box contains more details about the current program. And the recording information box shows the recording status. You can check these by pressing the **INFO** button and cancel it by pressing the **EXIT** button. The followings screen shot shows what the information box looks like.



- | | |
|--------------------------------|---|
| 1. Service number | 13. Subtitle support |
| 2. Service name | 14. Multiple audio language or audio format support |
| 3. Channel number | 15. Teletext support |
| 4. Channel frequency | 16. Dolby audio support |
| 5. Favorite group is selected. | 17. One program is recording. |
| 6. Current program duration | 18. Two programs are recording. |
| 7. Current program name | 19. Current service is recording. |
| 8. Next program duration | 20. Watching time-shifted position. |
| 9. Next program name | 21. Signal quality |
| 10. Censorship support | 22. Current time |
| 11. Locked Service | |
| 12. Pay service | |

1-3. Volume Level Adjust

With the **VOL+ /VOL-** buttons, you can adjust the volume level of the analog audio output. The **MUTE** button will turn off the analog and digital audio outputs.



NOTE

- You can not control the volume level of the digital audio outputs if you set the audio format as "pass-through". Therefore you have to use the remote control of an audio decoder (such as an amplifier) to adjust the volume level if you are using digital audio out.

1-4. Soundtrack Change

If the current TV program provides more than one language or audio format, i.e. MPEG audio and Dolby audio, together, you can select one and change to that setting while you are watching a TV program. Pressing the **SOUNDTRACK** button on the remote control will pop up a list box contains the languages and audio formats you can choose. Please select an item with the **UP/DOWN** buttons and press the **OK** button to change it. You can cancel and hide the pop-up list by pressing the **EXIT** button.



1-5. Subtitle and Teletext Service

1) Subtitle Service

If you want to view subtitles on the screen, please press the **SUBTITLE** button. To display the subtitle, please select "Enable" and press the **OK** button. You can hide the subtitle by selecting "Disable" with the **OK** button. You can also change the subtitle language if the program provides more than one subtitle language. Please select a language with the **UP/DOWN** buttons and press the **OK** button.

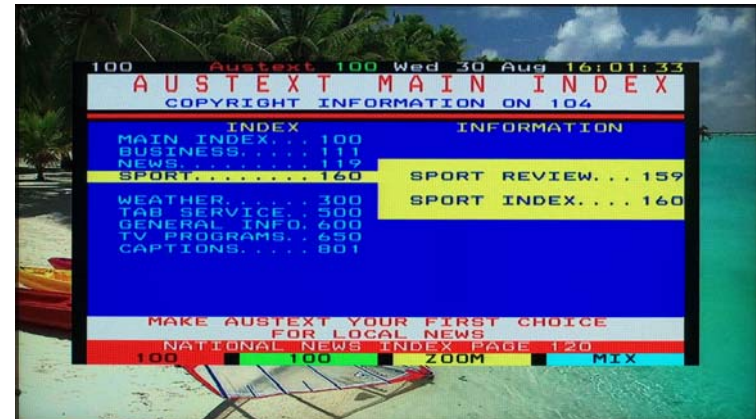


NOTE

- The subtitle function will not work if the service provider does not provide a subtitle service.

2) Teletext Service

The teletext is a free service broadcasted by TV stations which gives the latest information on news, weather, television programs, share prices and many other topics. As the teletext service is optional, it does not mean that all TV programs include teletext information. The DP-H1 support teletext service by emulating a teletext interpreter. The **TELETEXT** button displays the teletext pages. You can get more information from the teletext service with the **RED**, **GREEN**, **YELLOW**, **BLUE** and **NUMERIC** buttons.



1-6. Sleep Timer

You can set the DP-H1 to turn off automatically at a specific time. Press the **SLEEP** button to set the timer. The DP-H1 will only turn off after a recording has finished even if you set it to turn off before the completion of the current recording(s). To cancel the timer, please press the **SLEEP** button successively until you set time as "0 min".



2. Service Edit

2-1. Service List Edit

You can edit the service list if you want. The followings illustrate the editing functions you can use to edit a service list.



- Lock/Unlock: For your privacy, you can protect certain service from unauthorized access. If you lock a marked service with the **GREEN** button, you have to enter the 4-digit PIN code to watch the service. The **LOCK** icon implies that the marked service is locked. To unlock a service, you have to enter a 4-digit PIN code after pressing the **GREEN** button.
- Delete: You can delete the marked service from the service list. Press the **YELLOW** button to delete. You have to re-scan if you want to watch the deleted service(s) again.

2-2. Favorite Group

Favorite group is your personal collection of TV or radio services. You can organize up to 20 groups including three default groups.

1) Favorite Group Edit

Before you use the favorite service groups, you have to organize them. Please refer to Chapter 8. and organize your own favorite group(s).

2) Select Service on Favorite Group

Once you organize favorite groups, you can change the services that belong to a certain favorite group. You can display the list of favorite groups with the **FAV** button. As you see in the picture, the left column contains your favorite groups and the right column displays the services belong to the favorite group. Please select a favorite group in the left column with the **UP/DOWN** buttons and press the **OK** button. Then the cursor moves to the right column. On the right column, the services belong to the favorite group that was selected on the left column will be displayed. You can select a service with the **UP/DOWN** buttons. If you want to change to a certain service, please press the **OK** button on that highlighted service.



NOTE

- You can also use the **LEFT/RIGHT** buttons to move to the “Favorite Group” column or “Favorite Service” column.
- You can exit from the favorite group with the **EXIT** button.

3) Add Current Service to Favorite Group

You can add the service you are watching to a favorite group. Please display the favorite list with the **FAV** button and select a group where you want to add the current service. Please press the **YELLOW** button to add.

4) Service Change on Favorite Group

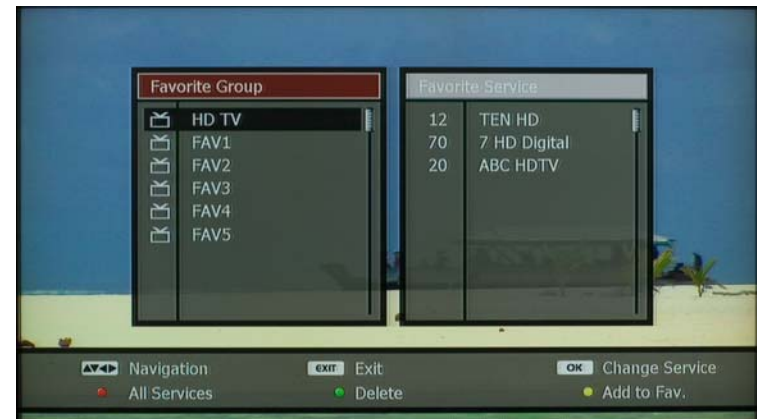
If you change services using the service list when you select a favorite group, the service list will show the services belong to that favorite group. You can change among these services on the list.

If you want to exit from a favorite group and list up all services available in the service list, please press the **BLUE** button when the service list is displayed.



If you change services with the **CH+ / CH-** buttons, it also changes among the services that belong to the favorite group you selected. The information box will indicate which favorite group is selected.

You can also exit from the favorite list by pressing the **RED** button when the favorite list is displayed.



3. PVR Functions

The DP-H1 does not include an onboard HDD. But it can support PVR functions such as time-shifting, recording and timer recording with an optional USB storage. You can also play the programs recorded in the USB storage. If you want to play a recorded program, please use the multimedia contents playback function with the **FILE PLAY** button on the remote control.

NOTE

- Unless a registered USB storage is not connected to the DP-H1, the PVR functions described in the following sections can not be utilized.
- The USB storage should be registered before using the PVR functions. The instruction is described in Chapter 9. Advanced Setup.

3-1. Time-shifting

You can pause and resume live TV program, and even rewind and replay it. The time-shifting function is enabled all the time unless you disable it in the Setup menu. The DP-H1 keeps 2-hour recording buffer of TV program by utilizing the USB storage storage. The buffer will reset if you change to another service. The trick-mode operations such as rewinding, fast-forwarding, pause and resuming are provided.

- **PLAY** button changes to normal playback mode while other trick mode is enabled such as PAUSE, FF or REW.
- **PAUSE** button will hold the picture until you select play again with the **PLAY** button.
- **STOP** button will skip and jump to the live position when you watch the picture at time-shifted position.
- **SLOW FWD** button will play the recording in slower speed. The speed will change to x1/2, x1/4, x1/8, x1/16 and x1/32 speed according to each press of the **SLOW FWD** button.
- **REW** button rewinds backward with x2, x4, x8, x16 and x32 speed.
- **FF** button plays forward with x2, x4, x6, x8, x16 and x32 speed.

The status of trick-mode operation will be displayed on the screen.



You can jump to a certain position with the **LEFT/RIGHT/UP/DOWN** buttons.

- **LEFT/RIGHT** buttons skips and moves backward or forward 15 seconds at a time respectively. You can also jump to a certain position with these buttons: The anchor mark moves backward or forward while you are holding down the **LEFT** or **RIGHT** button respectively. You can play and watch from the anchored position by releasing the button.
- **UP** button skips and moves forward 10% of the total runtime.
- **DOWN** button skips and moves backward 10% of the total runtime.

You will see the progress bar if you press the **LEFT/RIGHT/UP/DOWN** buttons.



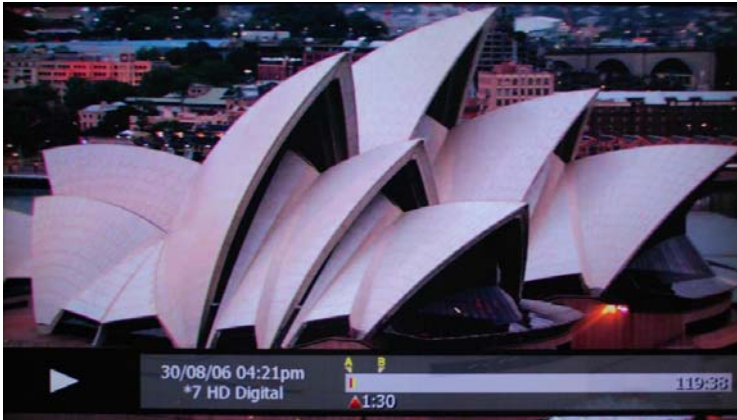
You can also display the progress bar with the **OK** button. The **OK** button can also hide the progress bar.

NOTE

- The time-shift buffer will be initialized if you change to other services or go to File Play, wizTV or Setup mode.
- If there is less than 10 seconds of history in the time-shifting buffer after initialization, the trick-mode operation can not work.
- If the time-offset is less than 10 seconds from the live, the time-shifting function may not work properly and play the live on the screen.

3-2. A-B Repeat

The DP-H1 can play a certain section (A-B) repeatedly.



Please activate the progress bar with the **OK** button. Place the lower anchor mark at the start position and press the **YELLOW** button. A new anchor mark with "A" will indicate the start position. Move the lower anchor mark at the end position and press the **YELLOW** button. A new anchor mark with "B" will be displayed and start to play from "A" to "B" automatically.

The DP-H1 will play A-B repeatedly until you press the **YELLOW** button and cancel it.

3-3. Instant Recording

1) Start Recording

You can record the current service and store it in the USB storage instantly by pressing the **REC** button. The following picture shows options you can choose when you record a program.



- **Duration:** You can change the duration of recording with the **LEFT** and **RIGHT** buttons. The default is 120 minutes.

- **Starting Point:** You can select the starting point of recording with the **LEFT/RIGHT** buttons when the time-shift function is enabled. If the time-shift function is disabled, you can only record from the current time.

1. **Live:** Start recording from the time when you press the **REC** button.
2. **Current Program:** Record only the current program even if there is a previous program stored in the time-shift buffer.
3. **All:** Record all the programs in the time-shift buffer.

- **File Lock:** You can lock the recording file if you want. The **LEFT/RIGHT** buttons will change this option.
- **File Name:** The recording will be stored on the USB storage as a file with the name of the current program but you can change the file name if you want. If you press the **OK** button, an on-screen keyboard will pop up and you can enter a new file name.

After setting all options, please press the **REC** button on the remote control or choose "Accept" button on the screen to start recording. If you want to cancel the recording, press the **EXIT** button on the remote control or "Cancel" button on the screen.

NOTE

- If you disable the time-shifting function, you can't record a program from the time-shifting buffer. Therefore you can only choose a single option of "Live" when you intend to record a program.
- If there is only one program in the time-shift buffer, two options of "Current Program" and "All" have the same meaning. Therefore option "Current Program" does not appear.
- The star(*) mark on the file name indicates that the DP-H1 will assign the file name as the program name automatically. If you change the file name with a screen keyboard, the star(*) mark will be removed automatically.
- You can record a radio program using the same procedure.
- If two programs are being recorded, you can't record another program. In this case, a warning message will pop up.

2) Trick Mode Operation

If you are watching a program while it is being recorded, you can perform the same trick mode operations, which are explained in the previous section of the time-shifting operation, even though you are recording two programs simultaneously. For more information of trick-mode operating, please refer to the previous section.



3) Pause/Resume and Stop Recording

If you want to skip recording for a certain period of time, i.e., commercial advertisements, please press the **REC** button while you are watching the recording service.



Once a pop-up page appears, please press the **PAUSE** button. You can resume recording with the **PAUSE** button.

To stop a recording before it stops automatically after the duration, please press the **STOP** button when the recording control pop-up is displayed.

NOTE

- You cannot pause recording if you are watching at time-shifted position.



4) Change Recording Options while Recording

You can change the duration of a recording or file name after the recording has started. You can also lock or unlock the recording file while you are recording the service. Press the **POP-UP** button and select "Recording Information" with the **OK** button.



Please select a recording item with the **UP/DOWN** buttons to change. If there is one recording, only one item will be displayed.



- You can change the duration with the **LEFT** or **RIGHT** button.
- You can change the file name with the **RED** button. An on-screen keyboard will be displayed to edit the file name.
- You can change the locking status of the recording file with the **GREEN** button.

NOTE

- You can stop the recording with the **STOP** button.
- You can change to the recording service with the **OK** button.
- The clock mark implies the recording comes from a timer recording.
- The DP-H1 can record two programs simultaneously but the programs should be broadcasted from the same channel.

3-4. Timer

You can set programs which you would like to record to USB storage. The timer function can also be used to turn on the DP-H1 and watch the set program according to your timer reservations. You can set up to a maximum 100 timers.

1) View Timer List

You can view and check all of the timer information; modifying or delete a timer and add a new timer to the timer list. Please choose "Timer List" in the pop-up menu which you can access with the **POP-UP** button.



NOTE

- The timers are arranged by the start date and time.
- The timer being recorded is listed on the top.

2) Add New Timer

To add a timer, please press the **RED** button to display a menu on the screen. A new pop-up window will appear to configure the timer.

You can configure the following items with your preference for a new time record.



- **Service:** You can select a service to record. The default service is the current service that you are watching. If you want to change it, please press the **OK** button: a list of services will be displayed and you can select a service with the **UP/DOWN** buttons then press the **OK** button. If you want to record a radio service, press the **TV/RADIO** button to change the list to the radio services.



- **Date:** Set start date of recording. Move cursor with the **LEFT/RIGHT** buttons and change date with the **NUMERIC** buttons.
- **Start Time:** Set start time. Move cursor with the **LEFT/RIGHT** buttons and change time with the **NUMERIC** buttons.
- **Duration:** Set duration of the recording with the **LEFT/RIGHT** buttons.
- **Recurrence:** You may set a series of timers by choosing Recurrence option. You can choose the following options with the **LEFT/RIGHT** buttons as your preference; Once, Daily, Weekend, Weekday, and Weekly.

- Mode: If you would like to watch a certain program or transfer it to an external recorder instead of recording it to HDD, please choose "View" option with the **LEFT/RIGHT** buttons. If you want to record a program, please select "Record" option.
- File Name: You can change the file name of the record. The **OK** button displays an onscreen keyboard to change the file name.
- File Lock: You can lock the recording file. Set this option with the **LEFT/RIGHT** buttons.

Finally, you can save and finish a timer by selecting "Accept" on the screen. If you want to cancel the timer and exit, please select "Cancel" or press the **EXIT** button.

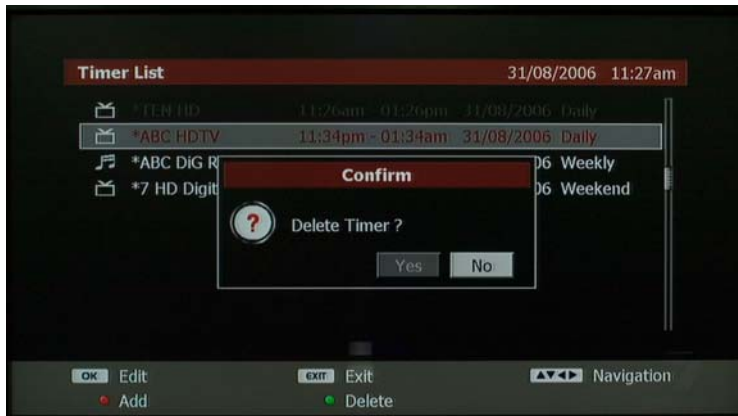
3) Edit Timer

You can modify a timer setting such as service, start date, start time, duration, recurrence and mode. Please choose a timer with the **UP/DOWN** buttons on the timer list and press the **OK** button to change. You can modify a setting the same way as described in the previous section of adding a new timer. Select "Accept" with the **OK** button to change the setting. Choose "Cancel" with **OK** button or press the **EXIT** button to cancel the modification and exit.



4) Delete Timer

Select a timer which you want to delete with the **UP/DOWN** buttons and press the **GREEN** button. A pop-up confirmation will appear and choose "Yes" with the **OK** button. If you do not want to delete a timer, choose "No" with the **OK** button or press **EXIT**.



NOTE

- You cannot edit or delete a timer which is being recorded.

5) Turn On and Off the DP-H1 according to Timer

If a timer starts when the DP-H1 is in standby mode, the DP-H1 is turned on automatically and performs its operation according to the timer. Once the timer is ended, a pop-up message will appear to ask if you are operating the DP-H1 or not. If there is no confirmation to turn off, the DP-H1 will be turned off and go into standby mode. If you want to use the DP-H1 continuously, select "No" on the screen and press the **OK** button. You can also cancel it by pressing the **EXIT** button. If you are watching a program and a timer recording has started you can not put the DP-H1 into standby until the recording has finished or is stopped by the user.

NOTE

- If the AC power is not supplied to the DP-H1 properly, it can not perform the timer recording. If a timer fails due to this reason, this timer remains in the timer-list for you to check it.
- After the AC power is back from a blackout while the DP-H1 is recording a program according to a timer, it restarts the timer recording if it has to do.

3-5. Recording Conflict

The DP-H1 can record up to two programs simultaneously. If you intend to record more than two programs simultaneously, a warning pop-up of duplication will be displayed.

The following cases indicate when duplication occurs;

- A new timer intended to be set conflicts with existing timers: set three timers at the same time.
- A new recording starts according to a timer while two programs are being recorded.
- A new timer overlaps with a current recording because the timer also records the same service with the recording.

NOTE

- The DP-H1 can record two programs simultaneously but the programs should be broadcasted from the same channel.
- When you set a new timer, the DP-H1 checks if the new timer conflicts only with exiting timers: it does not check if the new timer conflicts with recordings set by instant recording option.
- In this case, the DP-H1 checks conflict when the timer starts.

1) Duplication When a New Timer Sets

You can not add a new timer to record three programs at the same time. If this occurs, a pop-up list is displayed to show the list of duplicated timers if a new timer is entered as duplication.



In order to add a new timer, please delete one group of timers displayed in the duplication timer list. You can choose a group with the **LEFT/RIGHT** buttons.

If you don't want to delete all of the previously set timers, please reorganize (delete some of the previously set timers) the previous set timers and make sure they don't duplicate to a new timer. Press the **EXIT** button to cancel adding a new timer and reorganize the timers in the timer list.

2) When New Recording Starts

If a new recording starts according to a timer while the DP-H1 records two programs simultaneously, the following pop-up will be displayed.



There are two options you can choose if duplication occurs: you can stop one of the current recordings to let a new recording start. Else you can cancel the new recording or timer recording and let the current two recording finish properly.

To stop one of the current recordings and start a new recording, choose a recording to cancel with the **UP/DOWN** buttons and press the **OK** button. If you don't want to stop any recordings, press the **EXIT** and cancel the new recording.

3) New Timer Overlaps Existing Timer

Because the DP-H1 checks recording conflict only with timers when you set a new timer, you can set a new timer which records and overlaps the same program being recorded. In this case, conflict will occur when a new recording starts according to the timer.



You can stop the existing recording and start new recording by pressing the **OK** button. If you do not want to start a new recording, please press the **EXIT** button.

NOTE

- The new recording has higher priority than the existing recordings. Therefore, when a new recording starts it will stop one of the existing recordings, which ends earlier respectively, if there are no confirmation or cancellation.
- You may not notice the warning message so make sure you organize the timer list properly specifically if you are recording a very important program.

4. EPG (Electronic Program Guide)

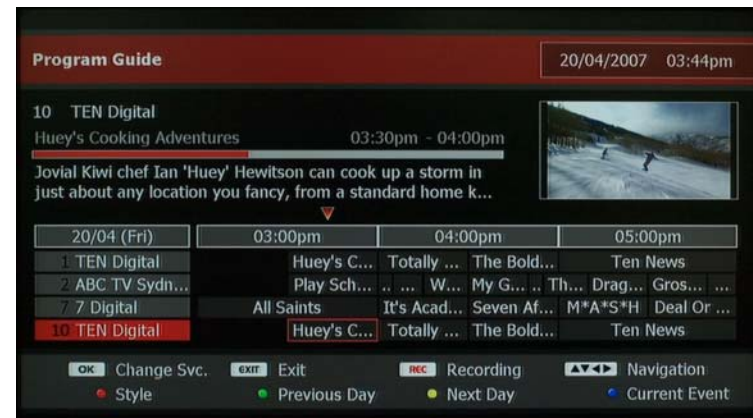
The EPG (Electronic Program Guide) is a time table of TV programs which show upcoming programs on a network. The EPG information is supplied by TV broadcasters as an optional service, therefore the DP-H1 can not provide a full EPG if some broadcasters do not provide this information.

The DP-H1 supports a full 7-day EPG provided as a subscription from IceTV. Please visit the IceTV website, www.icetv.com.au, to get your trial account and refer to Chapter 8 to organize it on your DP-H1.

The DP-H1 supports two types of EPG interface which will be explained. You can enter the EPG with the **GUIDE** button and change the EPG type with the **RED** button. If you want to exit from the EPG, please press the **EXIT** button.

4-1. EPG with Multiple Services

This EPG shows 4 services at a time. The vertical axis implies services and the horizontal axis implies time. You can move the cursor and explore the programs with the **UP/DOWN/LEFT/RIGHT** buttons; the **UP/DOWN** buttons change service. Therefore the cursor will move upward or downward according to the **UP/DOWN** buttons. The **LEFT/RIGHT** buttons change time, and the cursor will move to left or right accordingly.



You can check the information of a program on the message window when you place the cursor on the program.

You can move the cursor with the **GREEN**, **YELLOW** and **BLUE** buttons instead of pressing the **UP** or **DOWN** button continuously.

4-2. EPG with Single Service

This EPG shows only one service at a time. You can change to the multiple-service EPG with the **RED** button. Programs are listed vertically by time. Therefore you can move cursor to the previous or next program with the **UP/DOWN** buttons. If you want to review another service, press the **LEFT/RIGHT** buttons to change.



You can check the information of a program on the message window when you place the cursor on the program.

You can move the cursor with the **GREEN**, **YELLOW** and **BLUE** buttons instead of pressing the **UP** or **DOWN** button continuously.

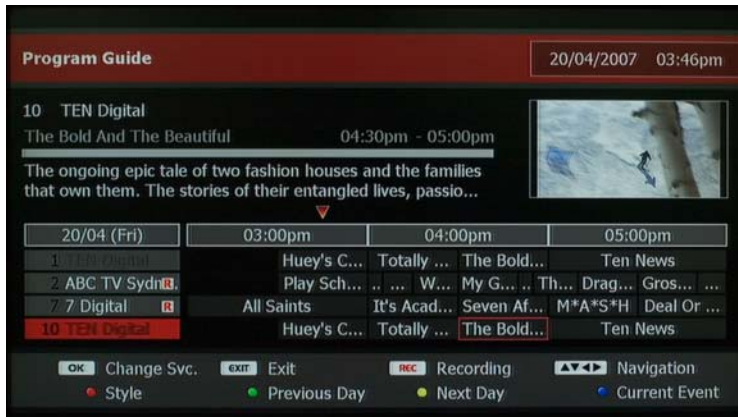
NOTE

- The thumb-nail window displays the program you watched before you entered the EPG. The screen will not change when you change the service or program with the **UP/DOWN/LEFT/RIGHT** buttons in order to prevent from refreshing the time-shifting buffer.

4-3. Service Change and Recording

1) Service Change

If you want to change and watch a certain program, place the cursor on the program you want to watch and press the **OK** button. In this case, the thumb-nail screen will be changed and the time-shifting buffer will be refreshed.



NOTE

- Whilst two programs are being recorded, you can not watch the third unless you cancel one of two recordings.
- The shaded types of service name indicate that you can not watch it.
- You can not watch a program if it is already finished or scheduled to show in the future.

2) Instant Recording

You can record in the EPG with the **REC** button. The red anchor mark indicates the current time. If the cursor is placed on the current program, the **REC** button enables instant recording. The "R" mark on the service name indicates that the program is being recorded.

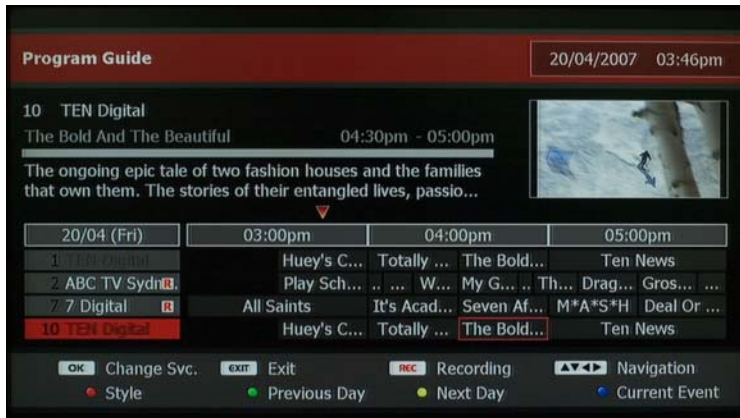


NOTE

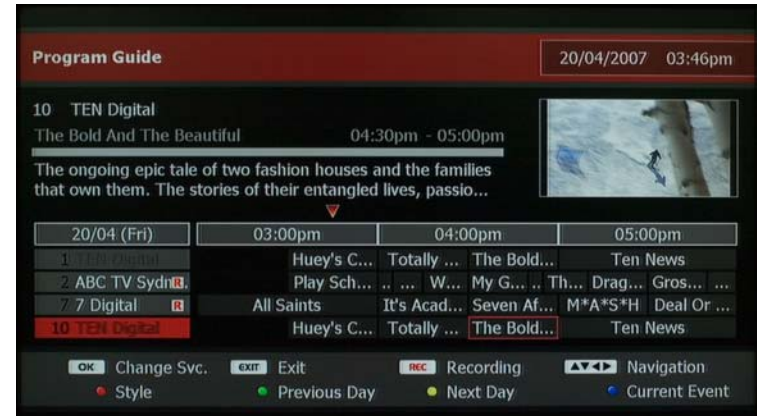
- The recording, which is set in the EPG, starts from the current time and ends at the end of the current program automatically.

3) Set timer recording

If the cursor is placed on a future program, the **REC** button sets a timer and the colour of types changes to red to indicate that the program is reserved to be recorded. If a certain cell in the EPG has red colour, that program is reserved to be recorded.



If you set a timer with the **REC** button, the recurrence of the timer sets as "Once" automatically. You can change the recurrence or edit the timer with the **REC** button in the EPG.



You can cancel a timer by pressing the **GREEN** button.

NOTE

- If a timer does not cover the full program, the red colour with lower colour saturation will be displayed on the cell.

6. File Playback Function

This chapter covers all functions regarding playing multimedia contents. The DP-H1 can play movie, music and photo files stored in the internal hard disk drive, PCs on the home network, USB storage devices, and memory cards. You can also play the recording contents in this mode. You can enter this operation mode with the **FILE PLAY** button.

1. Exploring Contents

To provide a user-friendly interface, the main menu is structured in three parts; the first part is a top (horizontal) menu where you can select a type of contents to play. The second part is a left (vertical) menu where you can select a storage or device where the contents are stored. The last part is a file list where you can view and select files and folders.

The following picture shows the main menu and illustrates the structure. A step-by-step explanation will be provided to help you understand its operation.



1) Step 1: Select Content Type

With the **LEFT/RIGHT** buttons, you can select a content type you want to play. If you select "Movie" icon on the top menu, only the movie files will be displayed on the screen even though a folder or device contains other type of contents such as music or photo. You can also choose "Music" or "Photo" icon with the **LEFT/RIGHT** buttons.

2) Step 2: Select Storage

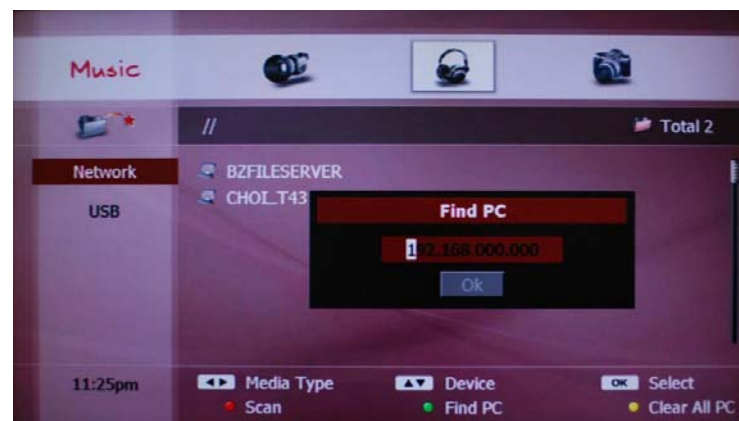
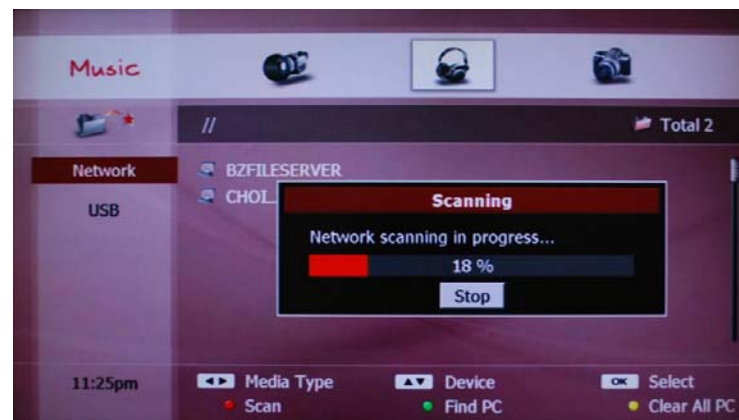
With the **UP/DOWN** buttons, you can select a device to access. As you select a device, folders and files stored in that device will be listed on the screen. There are five icons on the left menu and each icon has the following meanings:

- **HDD:** You can access the internal hard disk drive by choosing “HDD” icon. The recorded programs of TV and Radio will be stored in the “Recording” folder. If you want to play a TV program, please place the cursor on the “Movie” icon. For the Radio program, please place the cursor on the “Music”.

- **Network:** A list of PCs or network devices connected to your home network will be listed if you select this icon. You can also see the WizPNP server in the list when you enable the WizPNP client function and there exist a WizPNP server device on your home network.

In order to scan and update PCs connected to your home network, please press the **RED** button to. Please be sure that the device has at least one shared folder to access and share contents.

You can scan a specific network device with its IP address. Please press the **GREEN** button and enter the IP address of the device.



The "PC" icon indicates the PC and the "STB" icon indicates the WizPNP server.



- USB: You can access any USB devices connected to the DP-H1 by selecting "USB" icon on the left menu. If there is more than one USB devices, all the devices will be listed on the screen.

The top icon on the left menu implies a play-list where you can put files temporarily as your preference. You can organize one play list per each content type; movie, music and photo. This will be explained in greater detail in the following section.

NOTE

- If there is no device listed on the screen after scanning, please check the network connection and make sure its set and configured properly.
- If you want to clear the list of network devices, Please press the **YELLOW** button.



- The USB device must be compatible with the USB 2.0 standard.

File Playback Function

WARNING

- Each USB port can supply maximum of 500mA to the external device. Connecting devices consuming more than 500mA can damage the DP-H1 if there is no additional power supplier to the USB device.
- The USB device should be detached properly to prevent the DP-H1 from unstable operation or damage. Please press the **RED** button to detach the selected USB device properly.



3) Step 3: Exploring Folders and Files

Once you select a content type, i.e., "Movie" and storage or device, i.e., "Network", press the **OK** button to enter the list of folders and/or files (the file list). In the file list, the **UP/DOWN** buttons move the cursor upward or downward to select a folder or file. The **CH+** and **CH-** buttons work as the **PageUp** and **PageDown** buttons respectively.

Please remember that the **UP/DOWN** buttons do not change your selection of the storage type, i.e., "HDD" on the left menu in this operation mode. If you want to change the storage type, you have to exit from the file list with the **EXIT** button.

You can play content with the **OK** or **PLAY** button. More information of playback by content types will be supplied later.

NOTE

- There are two operation modes for exploring contents; in the first operation mode, you can select an icon (content type) on the top menu with the **LEFT/RIGHT** buttons and an icon (device) on the left menu with the **UP/DOWN** buttons. The second operation mode you can enter with the **OK** button is selecting a folder or file.
- You can change the content type whilst you are exploring in the list menu with the **LEFT/RIGHT** buttons without exiting from it. However you can not change a device on the left menu with the **UP/DOWN** buttons unless you exit.

2. Contents Playback

2-1. Movie Playback

To play a movie, please select the "Movie" icon on the top menu and select what you want to play on the file list; as explained in the previous section, select a device or storage on the left menu with the **OK** button to enter the file list. You can choose a file or folder with the **UP/DOWN** buttons on the file list. Once you choose a file, please press the **PLAY** or **OK** button to play the file.



NOTE

- It takes a few minutes to start playing depending on the content format.
- If you want to play the previous or next file as you are watching a movie, please press the **PREV** or **NEXT** button.
- A certain movie content could not play as it depends on the content format.
- If you are recording a service, the playback of high-definition movie content can be limited.
- The DP-H1 plays the successive files in the same folder after playing a file unless you press the **STOP** button.

1) Trick Mode

Powerful trick-operation is supported while you watching a movie.

- **PLAY** button will display a time-bar. It changes to the normal playback mode while other trick mode is enabled such as PAUSE, FF or REW.
- **PAUSE** button will hold the picture until you play again with the **PLAY** button.
- **SLOW FWD** button will play in slower speed than the normal speed. The speed will change to x1/2, x1/4, x1/8, x1/16 and x1/32 speed according to each input of the **SLOW FWD** button.
- **REW** button rewinds backward with x2, x4, x8, x16 and x32 speed.
- **FF** button plays forward with x2, x4, x8, x16 and x32 speed.
- **LEFT** button skips and moves backward in 15 seconds. You can also jump to a certain position with the **LEFT** button. The anchor mark moves backward while you are pressing the **LEFT** button. You can play and watch from the anchored position by releasing the **LEFT** button.
- **RIGHT** button skips and moves forward 15 seconds. You can also jump to a certain position with the **RIGHT** button. The anchor mark moves forward while you are pressing the **RIGHT** button. You can watch from the anchored position by releasing the **RIGHT** button.



NOTE

- The trick mode operation can not always be supported as it depends on the content format.

2) A-B Repeat

The DP-H1 can play a certain section (A-B) repeatedly.



Please activate the progress bar with the **OK** button. Place the lower anchor mark at the start position and press the **YELLOW** button. A new anchor mark with "A" will indicate the start position. Move the lower anchor mark at the end position and press the **YELLOW** button. A new anchor mark with "B" will be displayed and start to play from "A" to "B" automatically.

The DP-H1 will play A-B repeatedly until you press the **YELLOW** button and cancel it.

NOTE

- The "A-B Repeat" function does not work for some types of content.

3) Subtitle

The DP-H1 can decode and display subtitles from a subtitle file. To play a movie with subtitle, please copy the subtitle file to the same folder of the movie file and give the same file name as the movie file. The DP-H1 automatically display subtitle when you play a movie with the **OK** or **PLAY** button.



- Enable and Disable Subtitle: You can hide the subtitle if you do not want to display. Please press the **SUBTITLE** button and press the **OK** button. You can also display the subtitle in the same manner.

- Subtitle Position: You can adjust the position of the subtitle with the **UP/DOWN** buttons while the subtitle control window is displayed.
- Time Sync: If the subtitle is out of sync, you can adjust the sync with the **LEFT/RIGHT** buttons.

NOTICE

- The DP-H1 support the following subtitle formats; smi, sub and srt.

2-2. Music Playback

You can play music the same way you play a movie; please select the "Music" icon on the top menu to play music. You can utilize the same trick operation for playing music which is described in the previous section for playing a movie.

You can play the previous or next file with the **PREV** or **NEXT** button.



NOTE

- The DP-H1 plays all music files in a folder repeatedly unless you press the **STOP** button.

2-3. Photo Playback

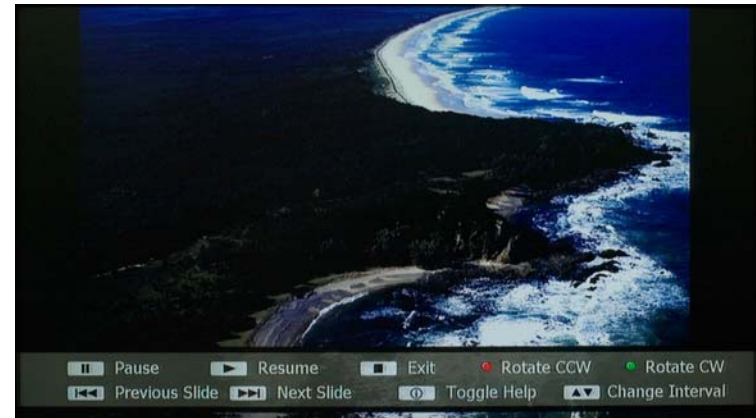
To play photo files, please select the "Photo" icon on the top menu.



Once the DP-H1 play a photo file, it will play all photos in the folder successively.

- Auto and Manual Slide Show: The default playback mode is auto but you can stop the auto-slide show with the **PAUSE** button and resume with the **PLAY** button. In the manual mode, you can change to the previous slide with the **LEFT** or **PREV** buttons and change to the next slide with the **RIGHT** or **NEXT** buttons.
- Stop Slide Show: You can stop the slide show and go back to the list menu with the **STOP** button.

- Show and Hide Help Message: If you press the **INFO** button, a help message will be hid. You can also display the help message with the **INFO** button.
- Rotation: You can rotate the photo with the **RED** and **GREEN** buttons.
- Change Interval: You can change the time interval in the auto slide show. As you press the **UP** and **DOWN** buttons, the time interval will be changed.



NOTE

- The DP-H1 plays all photo files in a folder continuously unless you press the **STOP** button under the auto-slideshow mode.
- The rotating operation can not support some photo formats.

2-4. Play-list

The play-list is a personal collection of multimedia contents, which stores the list of files temporarily. You can organize a separate play-list for each media content type: movie, music and photo.

1) Add File to Play-list

You can organize a play-list and enjoy the contents. Please place the cursor on a file you want to put to the play-list and press the **YELLOW** button: the file will be listed on the play-list. If you want to put more than one file to a play-list at once, choose files with the **BLUE** button one by one and press the **YELLOW** button. "Check" icon indicates that the file is selected.



NOTE

- If you can not put a folder on the play-list, you have to select all files of a folder and put them to the play-list.

2) View Files in Play-list

You can check files in the play-list by selecting the "PLAY-LIST" icon on the left menu with the **OK** button. Files in the play-list will be listed on the screen.



3) Play from play-list

You can play files in the play-list by pressing the **OK** or **PLAY** button. If you change to the previous or next file in the play-list, press the **PREV** or **NEXT** button.

4) Remove File from Play-list

You can remove a file from the play-list with the **YELLOW** button the same way as adding a file to a play-list. Select the "PLAY-LIST" icon on the left menu and choose a file which you want to remove from the play-list. You can also use the **BLUE** button to remove more than one file at once.



This page intentionally left as blank.

7. File Management

1. Rename

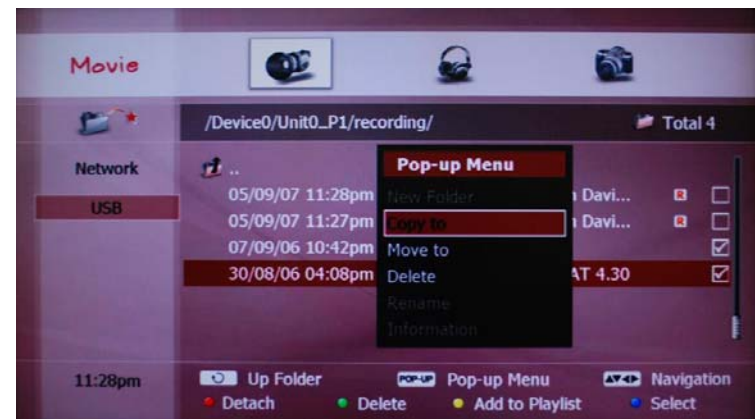
You can rename a recording file stored on the USB storage. Please select a file on the FLIE PLAY menu and press the **POPUP** button. A list of extended menus will be displayed. Please select "Rename" menu with the **OK** button.



You can edit the file name with the on-screen keyboard. Please select "Save&Exit" with the **OK** button after editing. You can cancel editing and exit with the **EXIT** button.

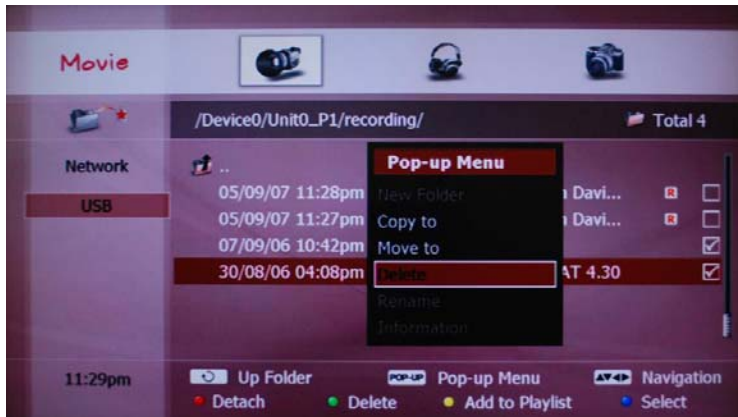
NOTE

- You can not rename more than one file with the same name at the same time. Therefore, the "Rename" menu will be disabled if you select more than one file.



2. Delete

You can delete the recording files stored on the USB storage. Please select a file on the FLIE PLAY menu and press the **POPUP** button. A list of extended menus will be displayed. Please select "Delete" menu with the **OK** button.



A pop-up window will be displayed to get your confirmation to delete. Please select "Yes" with the **OK** button to delete. Otherwise, please select "No" to cancel.

NOTE

- You can delete more than one file at the same time. Please select files to delete with the **BLUE** button. The check mark indicates that the file is selected. You can also unselect the file with the **BLUE** button.



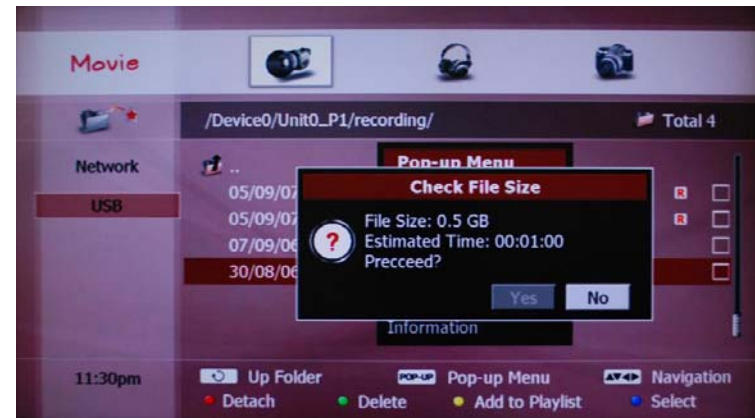
3. Backup to USB Storage

The registered USB storage does not compatible to the Windows operating system. Therefore, you can not backup the recording files stored on the USB storage directly connecting to your PC.

However, you can copy or move the recording files stored on the USB storage to another USB storage device. Please select a recording file on the FLIE PLAY menu and press the **POPUP** button. A list of extended menu will be displayed. Please select "Copy to" or "Move to" menu with the **OK** button.



The estimated time information is displayed and you can decide if you proceed or cancel according to the time information.



NOTE

- A USB storage device is not included in the gift box.
- The USB storage device which is used for backup should be formatted with the DP-H1. The instruction is described in Chapter 9. Advanced Setup.

If you confirm, two options will be displayed. Please select "USB" with the **OK** button. The USB storage devices connected to the DP-H1 will be listed. Please select "USB" with the **OK** button.



The USB storage devices connected to the DP-H1 will be listed. Please select one with the **OK** button.



NOTE

- If you want to create a new folder, please press the **GREEN** button.

The **RED** button will copy or move the files to the selected folder. A progress-bar indicates the status.



NOTE

- If you cancel to copy or move files, please press the **EXIT** button.
- In order to watch a TV program, please press the **LIVE** button.

4. Backup to PC via Network

You can also copy or move the recording files on the USB storage to a PC connected to your home network. Please select a file on the FLIE PLAY menu and press the **POPUP** button. A list of extended menu will be displayed. Please select "Copy to" or "Move to" menu with the **OK** button. All the remaining procedure is same as copying to the USB storage. Please select "Network" with the **OK** button.



All the network devices connected to your home network will be listed. Please select one with the **OK** button.



All the rest sequences are same as copying or moving files to the USB storage.

NOTE

- The shared folder on your PC should permit for the network users to change files on the PC.
- You can also backup the recording files from the DP-H1 with the WizFX software. Please visit to www.beyonwiz.com.au and download the WizFX software.

5. Edit Recording File

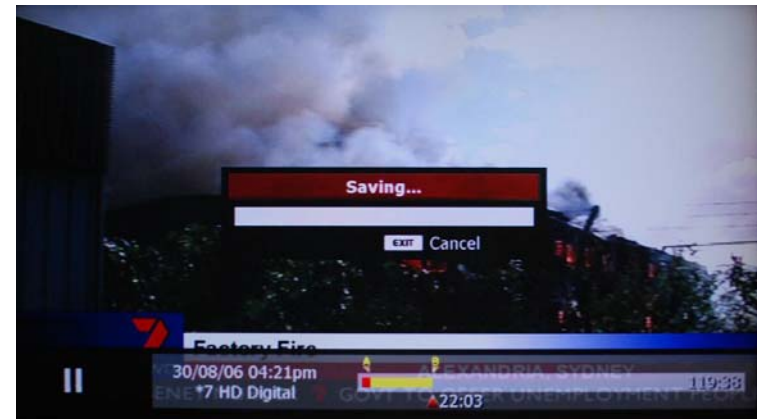
You can edit the recording file stored on the USB storage whilst you play a recording file on the FILE PLAY menu.



Please activate the progress bar with the **OK** button. Place the anchor mark at the start position and press the **YELLOW** button. A new anchor mark with "A" will indicate the start position. Move the anchor mark at the end position and press the **BLUE** button. A pop-up menu will be displayed.

- Cut out: you can cut and delete the selected part.
- Save a copy as: you can make a copy for the selected part.
- Crop: you can cut and delete the unselected part.
- Cut and Save: you can cut out the selected part from the original file and make a new file with the selected part.

A progress bar indicates the status.



8. Internet Service

The DP-H1 is designed to support various Internet services, however this will be updated at a later time. You can get the latest information for the DP-H1 by visiting the website, www.beyonwiz.com.au.

This page intentionally left as blank.

9. Advanced Setup

As an extension to Chapter 4. Quick Setup, this chapter illustrates how to configure your DP-H1. The MISCELLANEOUS and MANAGEMENT parts will be explained. In this chapter as they were the remaining two items that were not explained previously.

1. Miscellaneous

The setup menu is grouped in four parts: CONFIGURATION, NETWORK, MISCELLANEOUS and MANAGEMENT. The first two groups are explained in Chapter 4. In this chapter the last two parts will be illustrated.

As explained before, press the **SET-UP** button to enter the setup menu. As you select MISCELLANEOUS icon on the top menu, three items of Favorite, Access Control and Preference will be listed on the left menu bar.

1-1. Favorite

Before using the favorite service groups, you have to organize them. The edit page consists of three columns: Group, Fav. Service and All Service. Once you enter into the list with the **OK** button, you can place the cursor on one of the three columns with the **LEFT** and **RIGHT** buttons.

1) Group

The first column contains the list of your favorite groups. You can organize up to 20 favorite groups.



You can also add a new group, and delete or rename an existing group.

A favorite group can not contain TV services and radio services together. Therefore, you have to specify as TV or radio group when you make a new group. TV and RADIO icons indicate the property of each group.

- **Add Group:** You can add a new group with the **RED** button. If you press the **RED** button when the cursor is placed on the "Group" column, a screen-keyboard pops up and you can input the group name.
- **Rename:** To change the name of the existing group, press the **GREEN** button after placing the cursor on the group. a screen-keyboard pops up and you can modify the name.
- **Remove:** Press the **YELLOW** button to delete a group. If you press the **YELLOW** button, a confirmation pop-up screen will display to get your confirmation to delete. If you do not want to delete a group, press the **EXIT** button.
- **Move:** You can organize the order of the favorite groups with the **BLUE** button.

NOTE

- A favorite group can contain only one type of services; TV or radio.
- When you add the first service to a new favorite group, the favorite group becomes a TV group or radio group depending on the first service type.

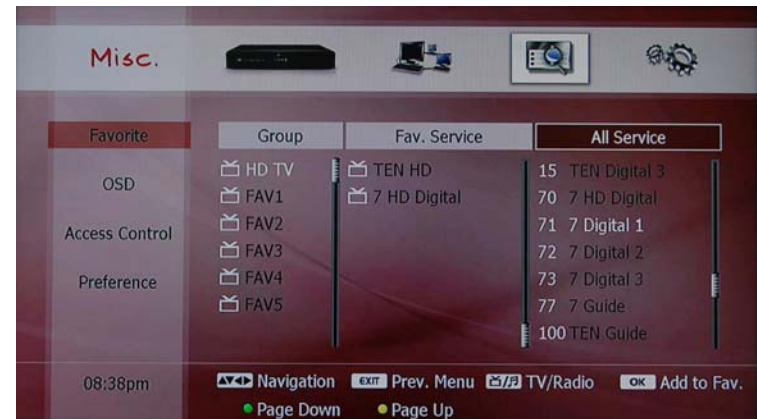
2) Favorite Service

According to your selection of the favorite group in the first column, the services belonging to the favorite group will be displayed on the second column. You can remove a service from the favorite group with the **OK** button.



3) All Service

The third column shows all services which you can access. This list shows all the service of TV or radio. With the **TV/RADIO** button, you can change this list to TV service list or radio service list. If you want to add a service to a certain favorite group, select a favorite group in the first column and select a service in the third column with the **OK** button. You can check if the service is added successfully on the second column.



1-2. OSD

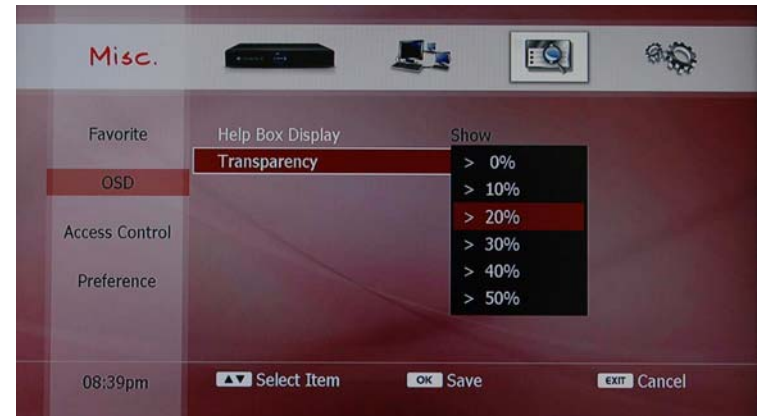
1) Help Box Display

You can hide the help box which is displayed with the service list. If you set this option as "Hide", the help box does not appear when you press the **LIST** button.



2) Transparency

You can set the transparency of the OSD. Please press the **OK** button to display the options of the transparency. After selecting an option with the **UP** and **DOWN** buttons, please press the **OK** button to set the change.



1-3. Access Control

You can set a PIN number to access certain set-up menus. After setting a PIN number, you have to re-enter the PIN number to enter the menu again.

1) Set PIN Number

You can set 4-digit PIN number with the **NUMERIC** buttons. For safety, you have to enter the number twice to set a new PIN number.



NOTE

- The default PIN number is 0000.

2) Access Control

You can lock the following setup menus.



- Censorship: If you set this, you have to enter the PIN number when you watch a program with higher censorship level.
- Start-up: If you set this, you have to enter the PIN number when you turn on the DP-H1.
- Setup Menu: If you set this, you have to enter the PIN number when you access to Setup menu.

- Time Setting Menu: If you set this, you have to enter the PIN number when you change the time and date setting.
- Network Configuration Menu: If you set this, you have to enter the PIN number when you change the network configuration.
- Service Scan Menu: If you set this, you have to enter the PIN number to scan service.
- Factory Setting Menu: If you set this, you have to enter the PIN number to set your DP-H1 as factory-default setting.

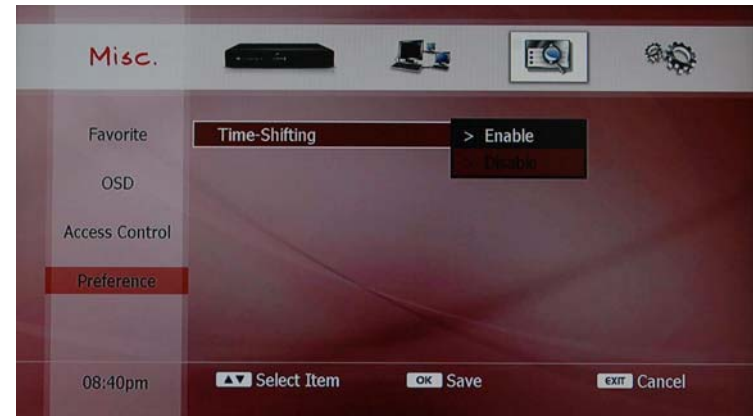
To change the configuration, press the **OK** button to get a pop-up menu to change the configuration. Please select with the **UP/DOWN** buttons and press the **OK** button to select. If you do not want to change, press the **EXIT** button.



1-4. Preference

1) Time-shifting

If you don't want to use the time-shifting function, you can disable it. Please select "Time-shifting" and press the **OK** button. You can select "Disable" on the pop-up menu screen. The default configuration is "Enable".



NOTE

- You can enable the time-shifting function instantly and temporarily while you are watching a program. Please press the **PAUSE** button to enable it.

2. Management

You can upgrade or initialize your DP-H1 in this menu.

2-1. F/W Upgrade

1) Firmware Information

Before upgrading the firmware, you can check the information and last update. Press the **OK** button to get the information: System Identity, Firmware Version and Last Update. You can exit with the **EXIT** button.



2) Firmware Upgrade

You can upgrade your DP-H1 with the latest firmware. Please visit the website, www.beyonwiz.com.au, for firmware information. If you wish to upgrade please download the latest firmware.



The DP-H1 can upgrade firmware which is stored on a PC in the home network, memory card or USB device.

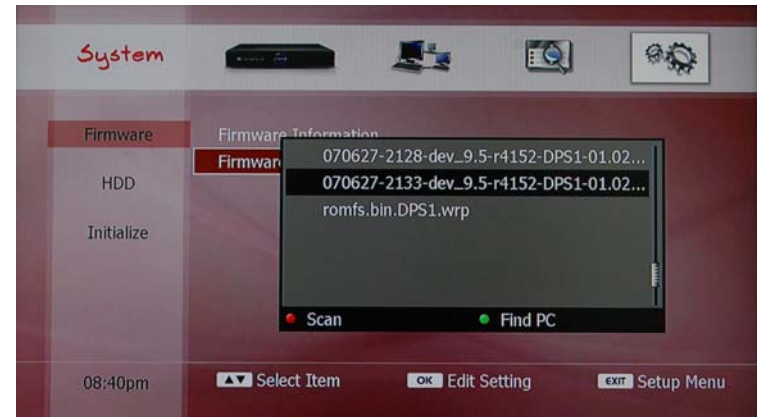
Advanced Setup

If you select the “Network” option, the PCs and network devices connected to your home network will be displayed. If you can not see any device on the list view, please press the **RED** button to scan the devices.



You can also scan a specific network device with its IP address. Please press the **GREEN** button and enter the IP address.

If you select the “Memory Card” or “USB” option, a list view will be displayed.



Please select the firmware on the file list and press the **OK** button to start. It takes several minutes to complete upgrading. Please make sure that your DP-H1 is NOT turned OFF until it finishes upgrading.



NOTE

- If you cannot visually see the firmware upgrading from your PC or device, please check the network configuration of your PC and DP-H1.

2-2. HDD

1) Register USB Storage

To use the PVR function, an optional USB storage is required; the USB storage should be registered. If you select "Register USB HDD" menu with the **OK** button, the USB devices connected to the DP-H1 will be listed. To register the selected USB storage, please press the **OK** button. The "R" mark indicates that the selected USB storage is registered.



NOTE

- When you register a USB storage, all the data stored in the USB storage will be erased.
- The registered USB storage does not compatible to the Windows operating system. Therefore, you can not use the USB storage for a PC unless you reformat it with your PC.

2) Format USB Storage

The USB storage should be re-formatted with the DP-H1 to use it for the PVR functions. If you select "Format USB HDD" menu with the **OK** button, the USB devices connected to the DP-H1 will be listed. Please press the **OK** button to format the selected USB storage.



NOTICE

- You have to wait until the DP-H1 formats the USB storage successfully, it takes several minutes. Do NOT TURN OFF the unit until this function is finished

3) Check USB Storage

If the DP-H1 is turned off improperly, it is strongly recommended to check the USB storage which is connected to the DP-H1 for the PVR functions. If you select "Check USB HDD" menu with the **OK** button, the USB devices connected to the DP-H1 will be listed. To check the selected USB storage, please press the **OK** button. It takes several minutes to check a USB storage.



2-3. Initialize

1) Clear Service Information

You can clear all the service information. If you select this with the **OK** button, a pop-up window will be displayed to get your confirmation. If you select "YES" all services will be deleted and you will have to rescan them again. Otherwise select "NO" or press the **EXIT** button to return to the initialize menu.



2) Factory Setting

If factory setting is selected, the DP-H1 will erase all information and reset itself to the factory configuration. If you select this with the **OK** button, a pop-up window will display to get your confirmation. If you select "YES" the DP-H1 will reset all data to the factory configuration. Otherwise select "NO" or press the **EXIT** button to return back to the initialize screen.



10. Troubleshooting Guide

The remote with the DP-H1 can control other brands. If you wish to Before contacting Beyonwiz Technical Support, please check the following Troubleshooting Guide and try all possible solutions for your problem. If the product does not work normally after completing the following troubleshooting suggestions, please contact your local product distributor or service centre.

It is recommended that you check your product's firmware version in the Setup menu (Setup\Management\Firmware) and upgrade to the most recent firmware version available from the Beyonwiz website, www.beyonwiz.com.au, before troubleshooting.

Problem	Possible Solutions
No message is displayed on the front panel display or product has no power	<ul style="list-style-type: none"> • Check the main power cable and ensure that it is plugged into a suitable power outlet. • Check that there is power available at the power outlet by plugging in another electrical device (eg. a lamp).
No picture	<ul style="list-style-type: none"> • Make sure that the product is in Operation Mode. • Make sure that the AV Cable is firmly connected to the TV.

	<ul style="list-style-type: none"> • Make sure that the antenna cable is correctly connected to the product. • Check the brightness level of TV. • Check if the channel is currently on air. • Check if the TV is set to the correct input corresponding to the product's video output connections (eg. AV1, Component, HDMI etc). • Has a Service Scan been performed? • Check that the product's video output settings are configured correctly to suit your display resolution. (Press the TV-OUT button on the Remote Control to advance through the various video output resolution options, or configure this via the Setup menu. Setup\Configuration\A/V Output)
Poor picture & sound quality	<ul style="list-style-type: none"> • Has an antenna been connected to the correct port on the rear of the product? • Avoid positioning the unit near a mobile phone or microwave oven as these devices may cause interference. • Use a good quality 75ohm coaxial cable to connect the antenna to the product. • Check the signal strength and signal quality indicators on the product's onscreen display (by pressing the INFO button on the Remote Control) to ensure that the received signal

	<p>strength and/or quality is optimal. If not, please contact an authorized antenna service agent or licensed contractor to seek advice concerning improving your TV reception.</p>
No sound, or poor sound	<ul style="list-style-type: none"> • Check the Volume status of the product, TV and other audio device/s. • Check the Mute status of the product, TV and other audio device/s. • Check that the audio output connections on the product have been connected to the correct input connectors on the TV and/or other audio device/s. • Check that the product's audio output settings configured in the Setup menu are correct. (Setup\Configuration\A/V Output)
Remote control does not operate the DP-H1	<ul style="list-style-type: none"> • To manipulate the product with the supplied Remote control, the Remote control's infrared emitter should directly point towards the infrared receiver of the product. • Check the batteries of the Remote control. • Ensure that the correct mode is selected on the Remote control i.e. STB mode if operating DP-H1 or TV mode if operating the TV. • If the Remote control range seems to be limited, check to ensure that the protective plastic layers (for shipping protection) on the

	<p>front panel of the DP-H1 has been removed.</p>
Remote control does not operate TV	<ul style="list-style-type: none"> • To manipulate the equipment with Remote control, the Remote control's emitter should directly point towards the product's Remote control receiver. • Check the battery of the Remote control. • Ensure that the correct mode is selected on the remote control i.e. STB mode if operating the DP-H1 or TV mode if operating the TV. • Has the Remote control been correctly programmed to operate your TV? (See page 7 of this Guide)
Timers are not recording	<ul style="list-style-type: none"> • Check to ensure that the timers have been set correctly. • Check if a registered external storage device is connected. • Check if the power supply to the product has been disconnected.
I can't connect to my network via LAN	<ul style="list-style-type: none"> • Check to ensure that the Ethernet (LAN) cable is connected to the correct port on the rear of the product. • Is the correct type of Ethernet cable being used for your network connection? (i.e. a "straight-through" or "crossover" cable?) • Have the LAN settings been correctly configured in the product's Setup Menu?

	<p>(Setup\Network\Setting)</p> <ul style="list-style-type: none"> • Check to ensure that the other devices on your network are configured correctly to connect with another network device.
EPG data is not present in the Guide, or the EPG data in the Guide is incorrect for my region	<ul style="list-style-type: none"> • Do you have an account subscription with an EPG data provider? (eg. Ice TV) • Check with your provider to ensure that your account subscription is current and that your account is correctly configured for your region. • Have you correctly configured the product with your provider's account subscription details? (Setup\Network\Ice Guide) • Is the product correctly configured and connected to a network device that can regularly access the internet to receive EPG data from your provider?
The picture looks squashed or too wide	<ul style="list-style-type: none"> • Check if the product has been configured to display the correct TV Aspect Ratio. (Setup\Configuration\A/V Output) • Check if the TV has been configured to display the correct TV Aspect Ratio. (see your TV user guide for information)
Unable to access Setup Menu options	<ul style="list-style-type: none"> • Check if system settings on the product have been locked with a PIN. (Setup\Miscellaneous\Access Control)

Unable to use "trick mode" functions with live TV	<ul style="list-style-type: none"> • Check if Time Shift is enabled. (Setup\Miscellaneous\Preferences) • Ensure the Time Shift buffer contains enough data to execute the desired function.
Unable to play media files	<ul style="list-style-type: none"> • Check if the media files are in a format that is supported by the product. • Check if the media files are playable on another device or if there may be some issue or error with the actual media files. • If the media files are stored on a disc, check if the disc is scratched or needs cleaning.

This page intentionally left as blank.

Specification

Main System

Main Processor	RISC CPU
----------------	----------

Tuner & Channel Decoder

Tuner	DVB-T Compliant
Tuner Input Conn.	IEC 169-2 Female Type
Tuner Loop-through Conn.	IEC 169-2 Male Type
Frequency Range	174~230MHz, 470~860MHz
Signal Level	-20 ~ -80dBm
Aerial Supply	5V, max. 100mA

Video & Audio Output

Analog Video Output	Composite, S-Video, Component
Digital Video Output	HDMI w/ HDCP
Analog Audio Output	5.1 Ch RCA
Digital Audio Output	Coxial, Optical (S/PDIF, Pass-through)

Extended Interface & Slots

Ethernet	10/100 Ethernet Port
USB Host	2 USB Host Ports (USB 2.0 Compliant)

Video & Audio Decoding

MPEG-2 Video	MPEG-2 up to 1080i
MPEG-4.2 Video for DivX	MPEG-4.2 up to 720p
MPEG-4.10 (H.264) Video	MPEG-4.10 up to 1080i
MPEG Audio	MPEG-1 Layer I, II, III (MP3)
Dolby Audio	Dolby Digital Stereo Decoding
Pass-through	Dolby & DTS Pass-through

Front Panel

VFD	Alphanumeric Display
RTC	Real-time Clock

Power Supply

Input Voltage	100~240VAC, 50/60Hz
Type	SMPS
Power Consumption	Max. 25W
Protection	Separate Internal Fuse Lightning Protection

Physical Specification

Size	390x60x295 mm
Weight	2.7Kg

- Specifications are subject to change without prior notice.

Warranty Conditions

1. Where required by Beyonwiz only the original invoice/receipt issued by the dealer will be accepted as proof of purchase.
2. Beyonwiz may reject warranty claims on equipment which it believes to be illegally acquired or when the "owner" is unable to provide proof of purchase or where security labels or serial numbers have been tampered with or removed.
3. The warranty covers only defects in the material and workmanship of the product for a period of 12 months from the date of original purchase.
4. This warranty is on "Return to Base" basis. The owner is responsible for the delivery of the equipment to the point of purchase and for collecting the repaired or replaced equipment from the same location.
5. The warranty is void if failures arise as a result of any of the following. i) Abuse, misuse, physical impact, normal wear and tear. ii) Alteration or repairs carried out with out written authorization from Beyonwiz. iii) Upgrade that are not registered by Beyonwiz iv) Operating or maintained other than in accordance with the manual supplied.
6. This equipment will not be considered defective as a result to incompatibility with other equipment or accessories other than the ones supplied with the unit at the time of purchase.
7. This unit should be returned in its original carton and protective packaging or alternatively in a packing suitable to prevent damage. Beyonwiz will not accept any responsibility for goods damaged whilst the goods are in transit.
8. Repair or replacement under the terms of this warranty does not give the right to extension or a beginning of a new warranty period. Repairs or replacements may be carried out with functionally equivalent reconditioned parts or equivalent part. Parts that have been replaced become the property of Beyonwiz.
9. The customer acknowledges that no promise representation or undertaking has been given by Beyonwiz or its dealer in relation to equipment other than as contained in this warranty.
10. A service charge will apply if the fault is not covered within the conditions of this warranty or if there is no fault found. The charge will be based on the current market rate.
11. Beyonwiz is not liable for any other loss other than the unit itself.
12. Nothing contained in this warranty shall be read or applied so as to affect the right of the consumer in relation to the provisions of the trade practices act or other statutory rights provided by legislation of the state or territory. In the absence of applicable legislation this warranty will be purchases sole and exclusive remedy and neither Beyonwiz nor its distributors or agents shall be liable for any incidental or consequential damages for breach of any express or implied warranty of this equipment.

WEEE Information



Correct Disposal of This Product (Waste Electrical & Electronic Equipment)

This marking shown on the product or its literature, indicates that it should not be disposed with other household wastes at the end of its working life. To prevent possible harm to the environment or human health from uncontrolled waste disposal, please separate this from other types of wastes and recycle it responsibly to promote the sustainable reuse of material resources.

Household users should contact either the retailer where they purchased this product, or their local government office, for details of where and how they can take this item for environmentally safe recycling.

Business users should contact their supplier and check the terms and conditions of the purchase contract. This product should not be mixed with other commercial wastes for disposal.

Contact Beyonwiz

Beyonwiz Australia

support@beyonwiz.com.au

www.beyonwiz.com.au

Some features and information in this manual may differ slightly from the product itself due to firmware version and changes made after printing.

Version 1.2_Eng

beyonwiz
Invent Your Future

Free Manuals Download Website

<http://myh66.com>

<http://usermanuals.us>

<http://www.somanuals.com>

<http://www.4manuals.cc>

<http://www.manual-lib.com>

<http://www.404manual.com>

<http://www.luxmanual.com>

<http://aubethermostatmanual.com>

Golf course search by state

<http://golfingnear.com>

Email search by domain

<http://emailbydomain.com>

Auto manuals search

<http://auto.somanuals.com>

TV manuals search

<http://tv.somanuals.com>