



BIPAC-7100S / 7100
ADSL Modem/Router

Quick Start Guide



For more detailed instructions on configuring and using the ADSL Modem/ Router, please refer to the on-line manual.

Package Contents

- Billion BIPAC-7100S/7100 ADSL Modem/Router
- One CD-ROM containing the driver and online manual
- One Quick Start Guide
- One RJ-11 ADSL/telephone cable
- One CAT-5 straight LAN cable
- One power adapter (12VDC, 1A)



Warning

- ✓ Do not use the BIPAC-7100S / 7100 in high humidity or high temperatures.
- ✓ Do not use the same power source for the BIPAC-7100S / 7100 as other equipment.
- ✓ Do not open or repair the case yourself. If the BIPAC-7100S / 7100 is too hot, turn off the power immediately and have it repaired at a qualified service center.

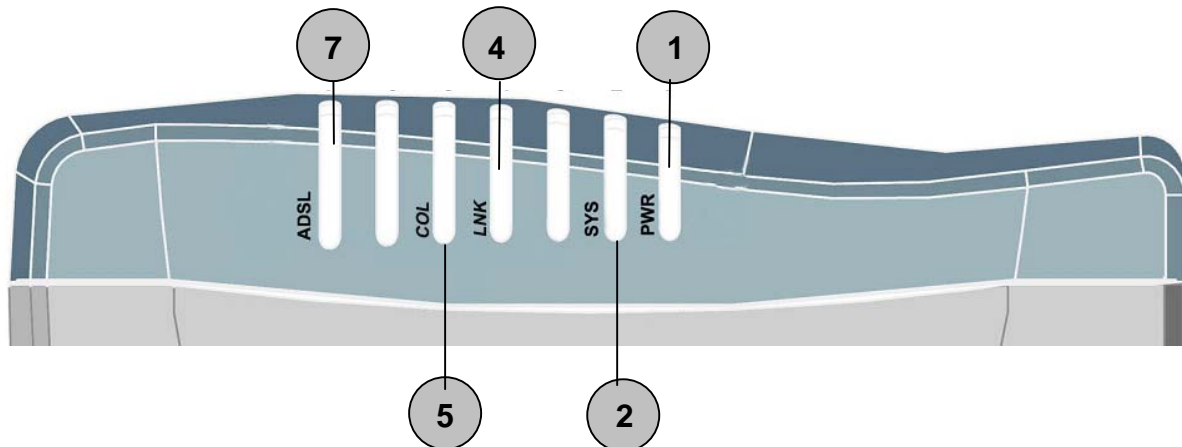


Attention

- ✓ Place the BIPAC-7100S/7100 on a stable surface.
- ✓ Only use the power adapter that comes with the package. Using a different voltage rating power adaptor may damage the router.

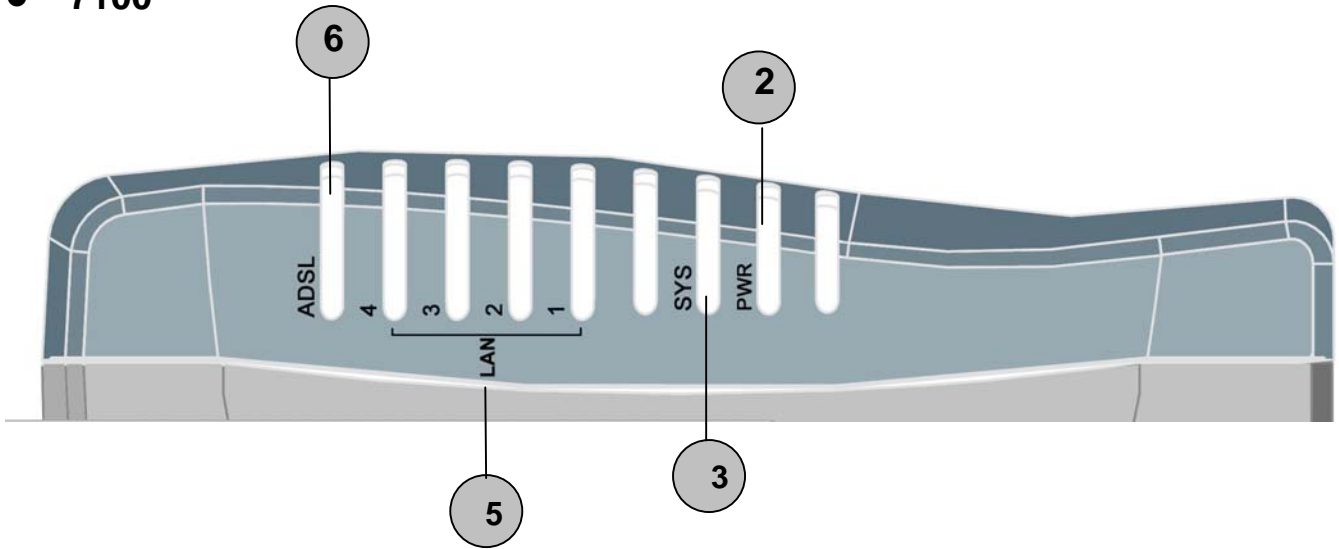
The Front Panel LEDs

- 7100S



LED		Meaning
1	PWR	● Lit green when power adapter is connected.
2	SYS	● When flash, it indicates that the device is working properly.
4	LNK	● Lit green when the LAN link is connected.
5	COL	● Flashes green when collision happens
7	ADSL	● When lit, it indicates that the ADSL (Line) port is connected to the DSLAM and working properly.

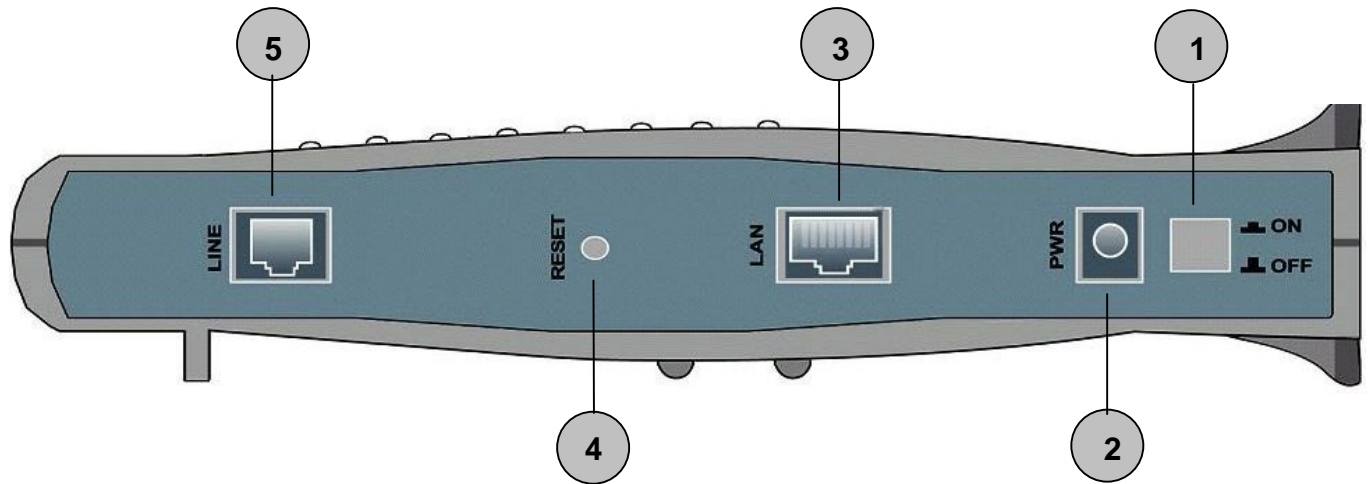
● 7100



LED		Meaning
2	PWR	● Lit green when power adapter is connected.
3	SYS	● When lit, it indicates that the device is working properly.
5	LAN1	● Lit green when the LAN1 link is connected.
	LAN2	● Lit green when the LAN2 link is connected.
	LAN3	● Lit green when the LAN3 link is connected.
	LAN4	● Lit green when the LAN4 link is connected.
6	ADSL	● When lit, it indicates that the ADSL (Line) port is connected to the DSLAM and working properly.

The Rear Ports

- 7100S



Port		Meaning
1	Power Switch	Power ON/OFF switch
2	PWR	Connect the supplied power adapter to this jack.
3	LAN (connector RJ-45)	Connect the supplied crossover cable to this port when connecting to a NIC (Network Interface card) in PC. Connect an UTP Ethernet cable to this port when connecting to a LAN such as an office or home network.
4	RESET	Press it to restore the factory default setting back
5	LINE (connector RJ-11)	Connect the supplied RJ-11 cable to this port when connecting to the ADSL

NOTE:

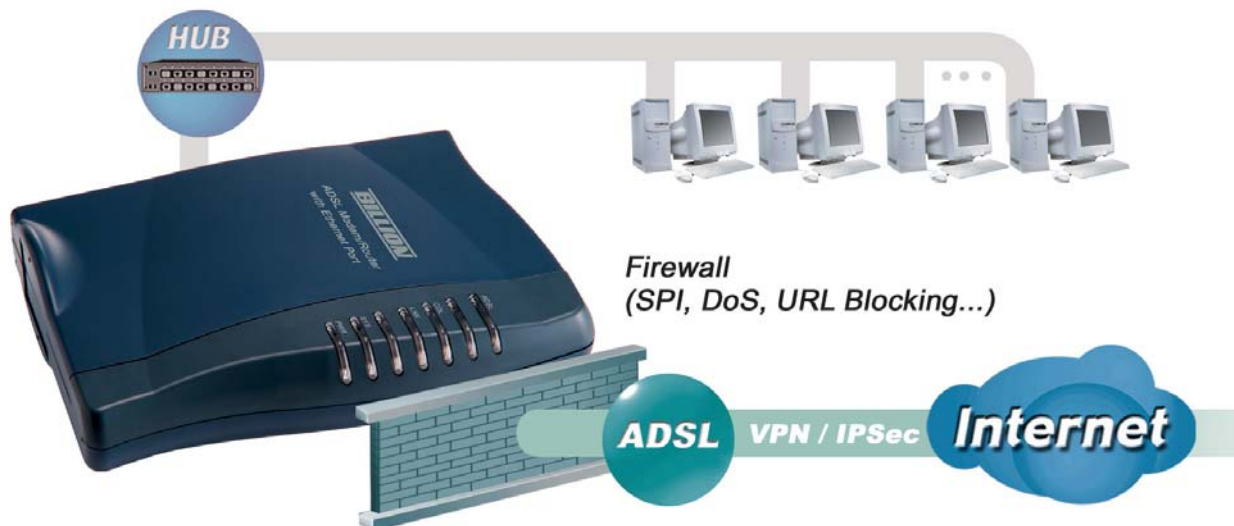

BIPAC-7100 has 4 LAN Ports, each of them has the same function as that of 7100S

Connecting Your ADSL Router

Through Ethernet Port

1. Connect the Router to a **LAN** (Local Area Network) and the ADSL/telephone (**LINE**) network.
2. Power on the device.
3. Make sure the **PWR** and **SYS** LEDs are lit steadily and that the **relevant LAN** LED is lit.
4. Follow the “**Configuring the Network Properties on a PC**” section on page 8 to modify the network settings.

- **7100S**

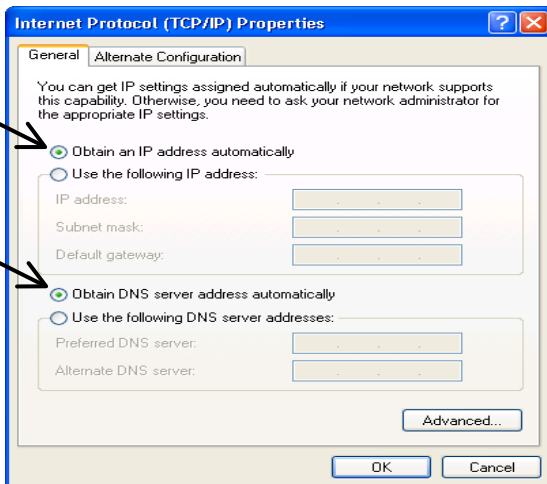
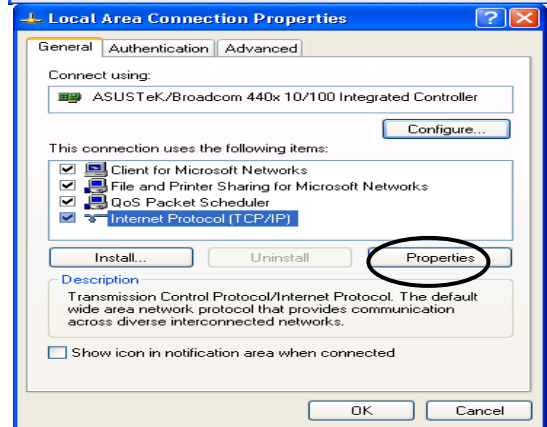
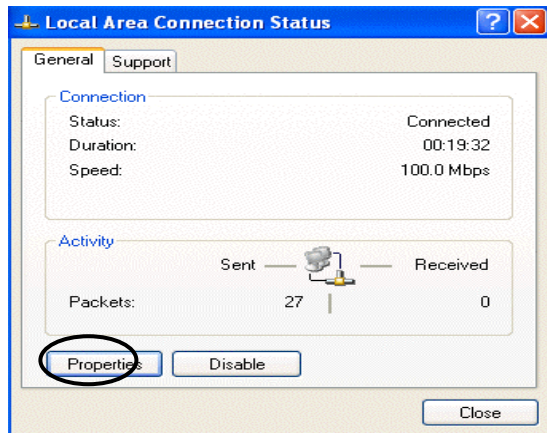
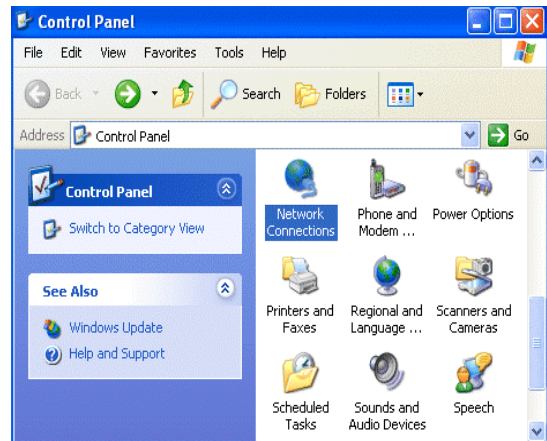


- **7100**



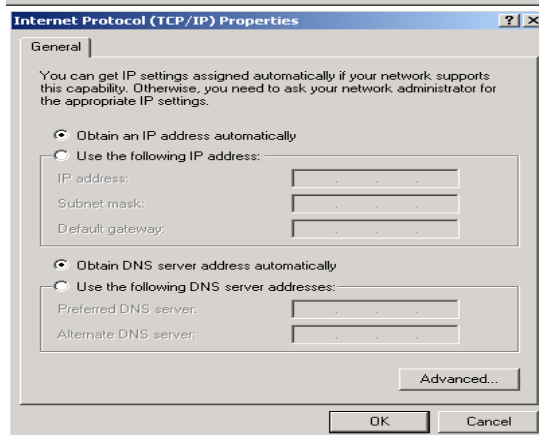
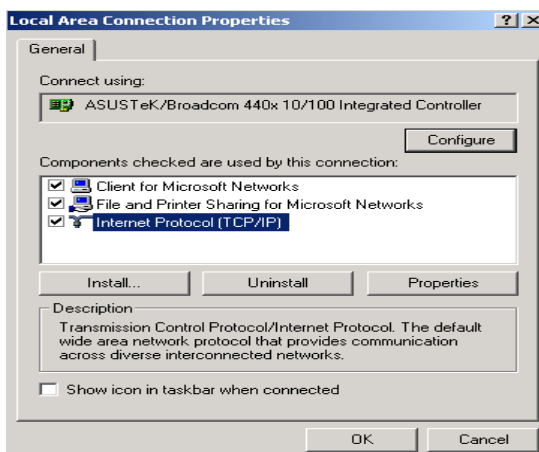
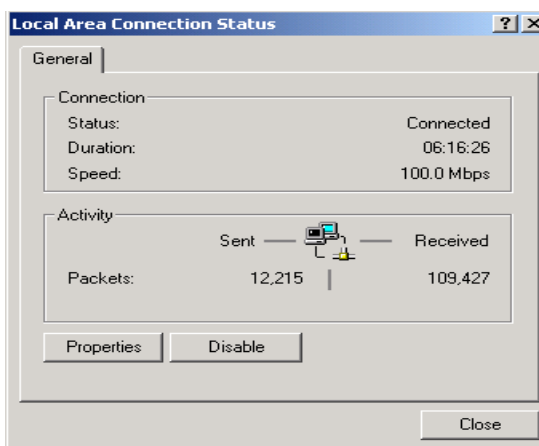
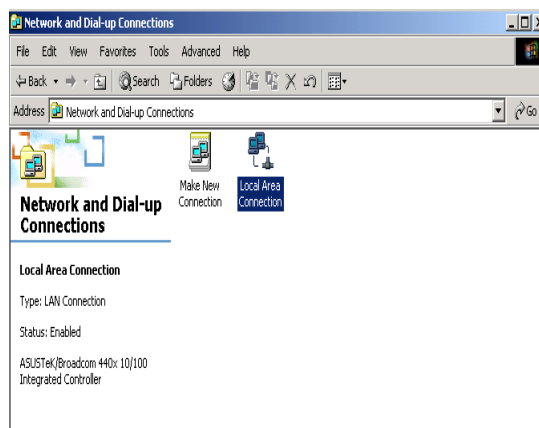
Configuring PC in Windows XP

1. Go to **Start / Control Panel (in Classic View)**. In the Control Panel, double-click on **Network Connections**
2. Double-click **Local Area Connection**.
3. In the **Local Area Connection Status** window, click **Properties**.
4. Select **Internet Protocol (TCP/IP)** and click **Properties**.
5. Select the **Obtain an IP address automatically** and the **Obtain DNS server address automatically** radio buttons.
6. Click **OK** to finish the configuration.



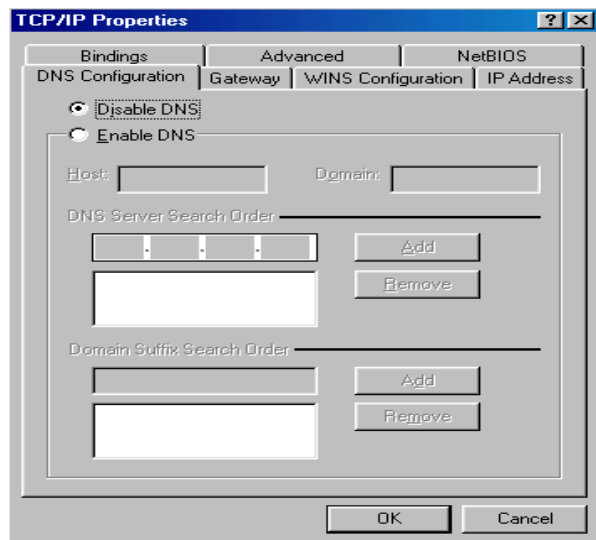
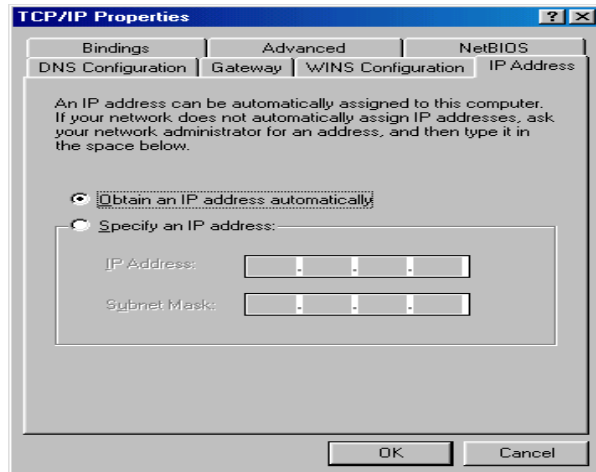
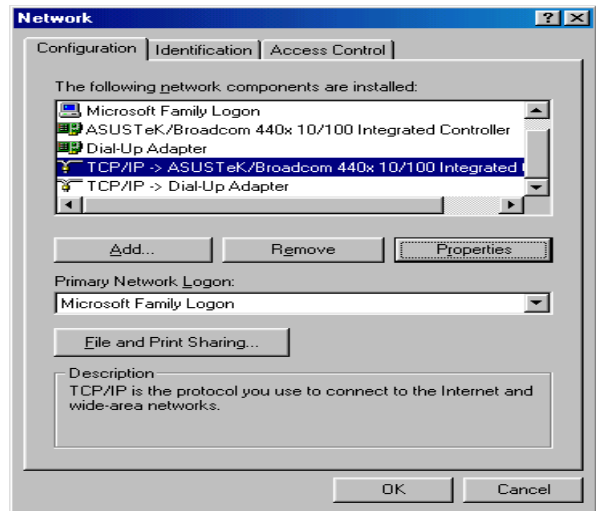
Configuring PC in Windows 2000

1. Go to **Start / Settings / Control Panel**. In the Control Panel, double-click on **Network and Dial-up Connections**.
2. Double-click **Local Area Connection**.
3. In the **Local Area Connection Status** window click **Properties**.
4. Select **Internet Protocol (TCP/IP)** and click **Properties**.
5. Select the **Obtain an IP address automatically** and the **Obtain DNS server address automatically** radio buttons.
6. Click **OK** to finish the configuration.



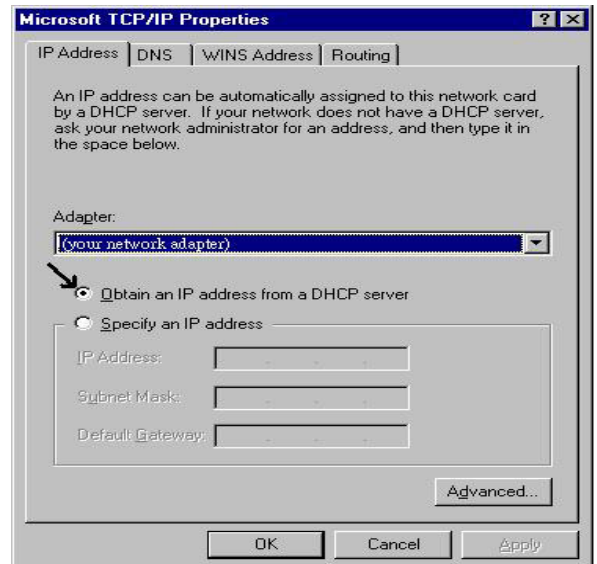
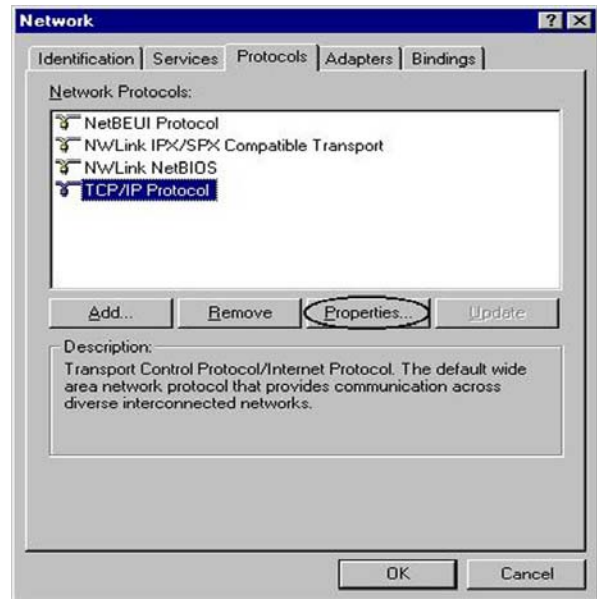
Configuring PC in Windows 98/Me

1. Go to **Start / Settings / Control Panel**. In the Control Panel, double-click on **Network** and choose the **Configuration** tab.
2. Select **TCP/IP -> NE2000 Compatible**, or the name of your Network Interface Card (NIC) in your PC.
3. Select the **Obtain an IP address automatically** radio button.
4. Then select the **DNS Configuration** tab.
5. Select the **Disable DNS** radio button and click **OK** to finish the configuration.



Configuring PC in Windows NT4.0

1. Go to **Start / Settings / Control Panel**. In the Control Panel, double-click on **Network** and choose the **Protocols** tab.
2. Select **TCP/IP Protocol** and click **Properties**.
3. Select the **Obtain an IP address from a DHCP server** radio button and click **OK**.



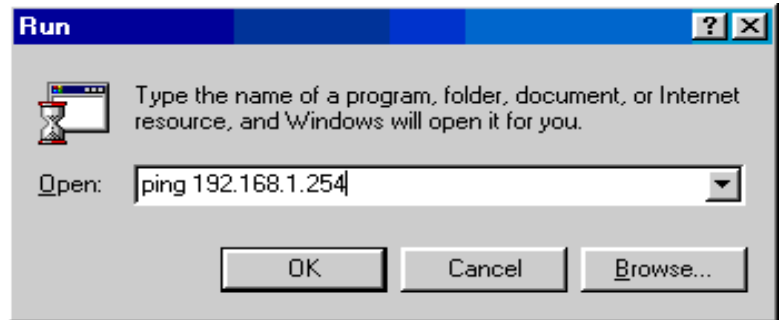
Configuring Your ADSL Modem/Router



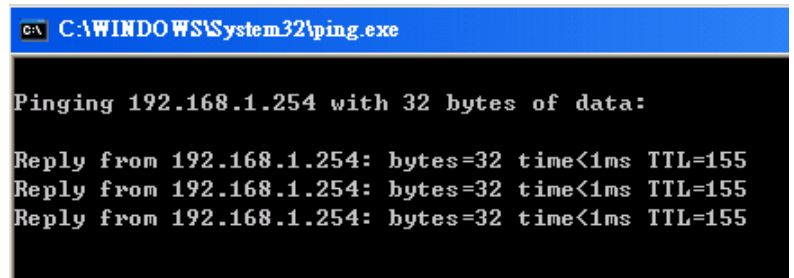
To configure this device, you must have IE 5.0 / Netscape 4.5 or above installed

■ Verifying Your Local Network Connection with the Device

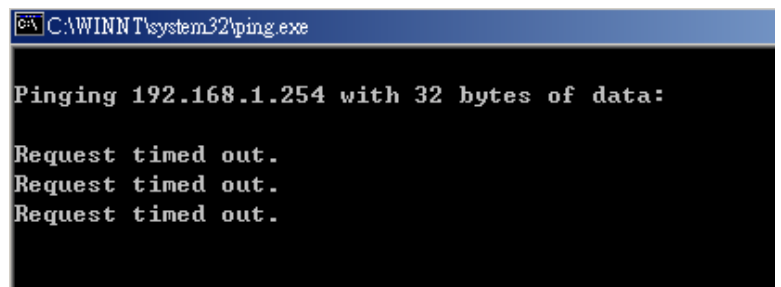
To see if this ADSL Router is visible on the local network, go to **Start / Run**. In the Run dialog box, type “**ping 192.168.1.254**” then press **OK**.



A command prompt window will pop out. If your ping is successful which means your local network is able to reach to the device, then the command prompt window will close up automatically.

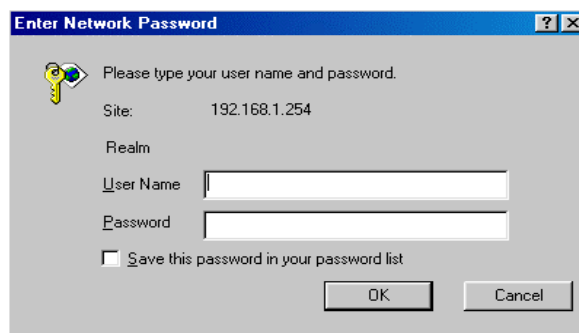


Connection fails, when you see “**Request timed out**” in the command prompt window. You may need to check your set up.



■ Connecting to the Router

1. Open the web browser and type <http://192.168.1.254> in the browser's address box. This number is the default IP address for this router. Press **Enter**.
2. A username and password window will appear. **The default username and password are admin and password.** Press **OK** to proceed.



Product Support and Contact Information

Most problems can be solved by referring to the **Troubleshooting** section in the User's Manual. If you cannot resolve the problem with the **Troubleshooting** chapter, please contact the dealer where you purchased this product.

Contact Billion

AUSTRALIA

<http://www.billion.com.au>

Hotline: 1300 139 159, 7 days a week.

©2003 Billion Electric Co Ltd., PC Range P/L. All Rights Reserved.

WORLDWIDE

<http://www.billion.com>

Mac OS is a registered Trademark of Apple Computer, Inc.
Windows 98, Windows NT, Windows 2000, Windows Me and Windows XP are registered Trademarks of Microsoft Corporation.

Free Manuals Download Website

<http://myh66.com>

<http://usermanuals.us>

<http://www.somanuals.com>

<http://www.4manuals.cc>

<http://www.manual-lib.com>

<http://www.404manual.com>

<http://www.luxmanual.com>

<http://aubethermostatmanual.com>

Golf course search by state

<http://golfingnear.com>

Email search by domain

<http://emailbydomain.com>

Auto manuals search

<http://auto.somanuals.com>

TV manuals search

<http://tv.somanuals.com>