

Billion

BIPAC-645

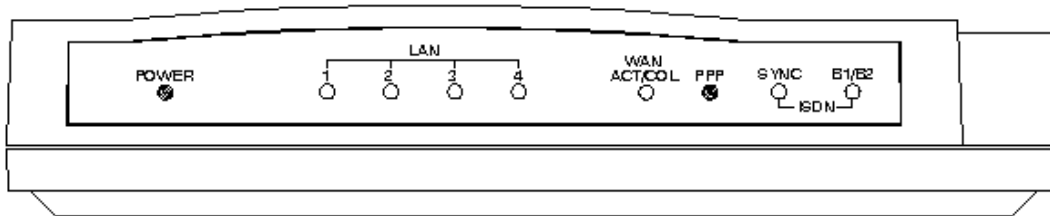
**DSL/Cable Router Plus ISDN Router
With 4-Port 10/100M LAN Switch**

Quick Start Guide

Package Contents

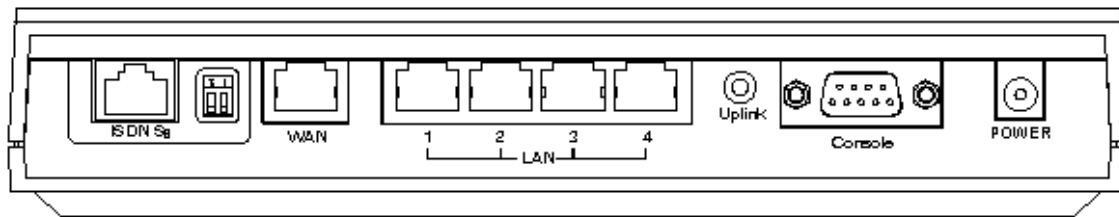
1. BIPAC-645
2. AC Power Adapter (9V 1Amp)
3. RS-232 cable (Null modem type)
4. RJ-45 ISDN cable
5. RJ-45 LAN cable
6. CD containing the online manual
7. This Quick Start Guide

The Front Panel LEDs



LED		Meaning
1	Power	Lit when AC power is connected.
2	LAN 1-4 / ACT/COL	Lit Green when connected to a LAN device. Flashes Green when sending/receiving data. Flashes Yellow when collisions happen.
3	WAN / ACT/COL	Lit Green when connected to a WAN device. Flashes Green when sending/receiving data. Flashes Yellow when collisions happen.
4	PPP	Lit when PPPoE connection is activated.
5	ISDN / SYNC	Lit when ISDN Layer 1 is activated.
6	ISDN / B1/B2	Lit Green when B1 channel is activated. Lit Yellow when B2 channel is activated. Lit Green + Yellow when B1 and B2 channels are activated.

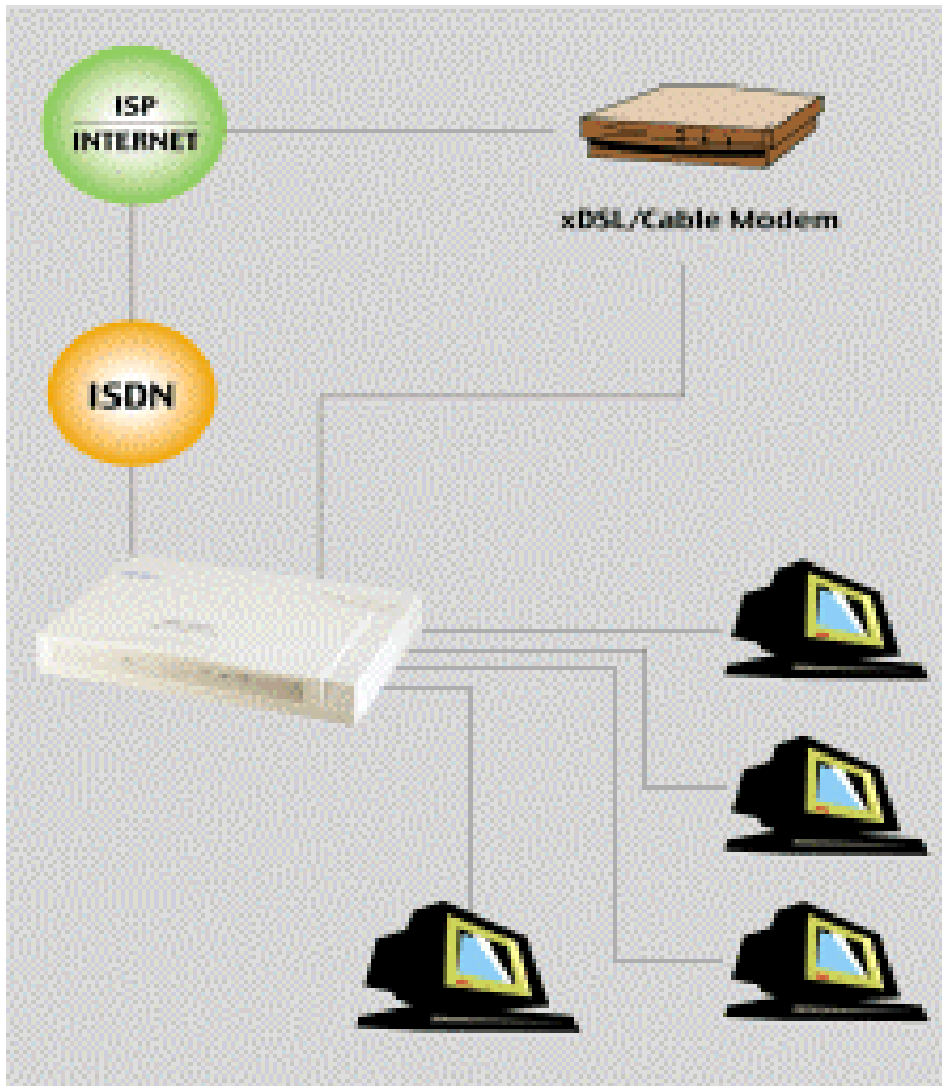
The Rear Ports



- | | |
|----------------------------------|---|
| Power (jack) | Connect the supplied power adapter to this jack. |
| Console (port) | Connect the supplied RS-232 cable to this port when connecting to a PC's RS-232 port (9-pin serial port). |
| ISDN So (RJ-45 connector) | Connect an RJ-45 cable to this port when connecting to the ISDN. |
| LAN 1-4 (RJ-45 connector) | Connect an UTP Ethernet cable to this port when connecting to a LAN such as an office or home network. |
| WAN (RJ-45 connector) | Connect an UTP Ethernet cable to this port when connecting to the Internet or making other WAN connections. |

Connecting the BIPAC-645

1. Connect the BIPAC-645 to a LAN (Local Area Network) and the WAN or ISDN.
2. Power on the device.
3. Ensure the Power and LAN LEDs are lit.

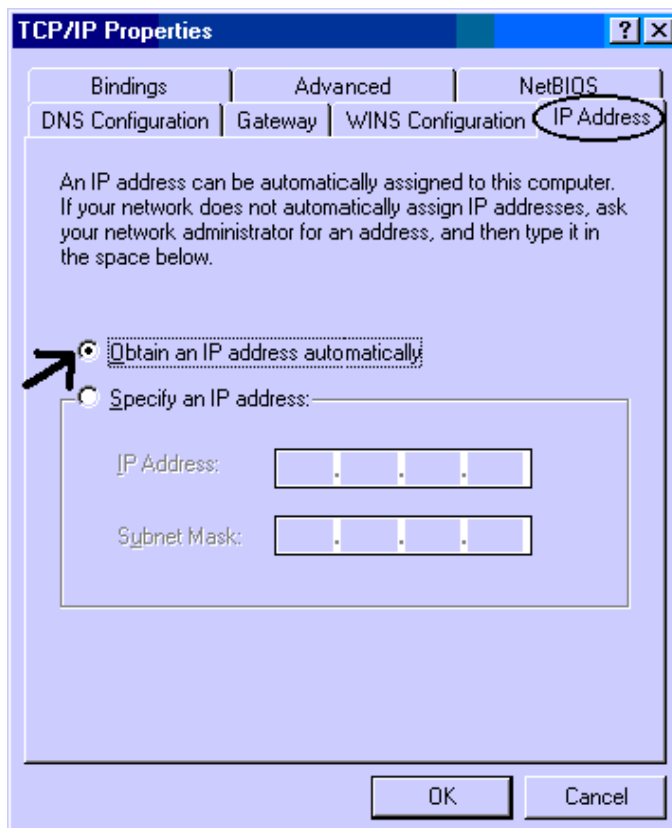
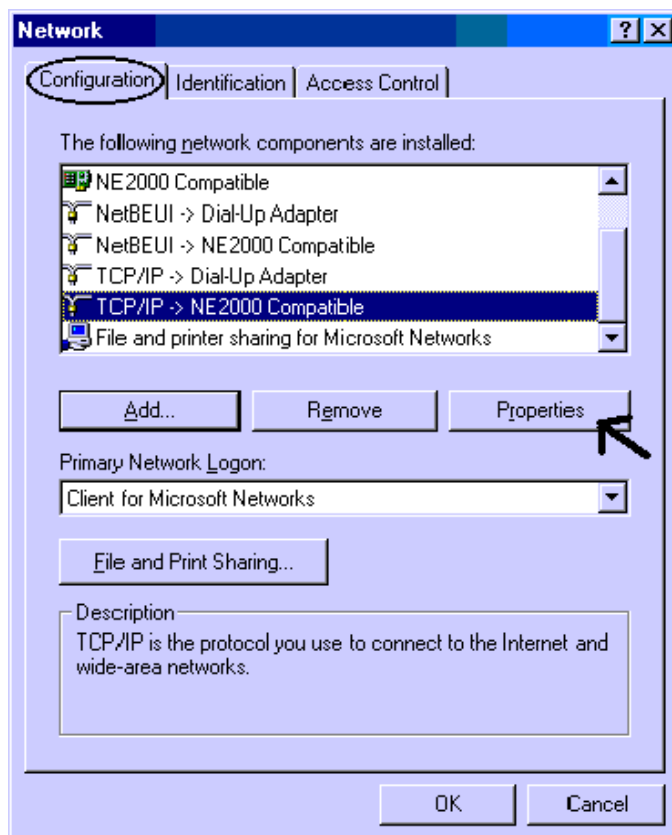


NOTE:

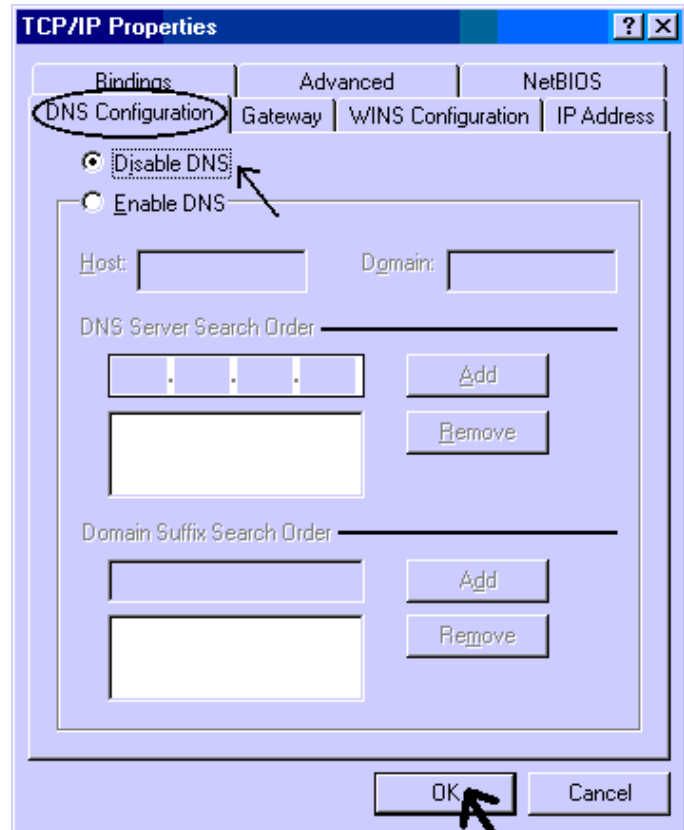

For more detailed instructions on configuring and using the device, please refer to the on-line manual.

Configuring PC in Windows 95/98/ME

1. Go to **Start / Settings / Control Panel**. In the Control Panel double-click on **Network** and choose the **Configuration** tab.
2. Select **TCP/IP -> NE2000 Compatible**, or any Network Interface Card (NIC) in your PC. Then click **Properties**.
3. Select the **Obtain an IP address automatically** radio button.

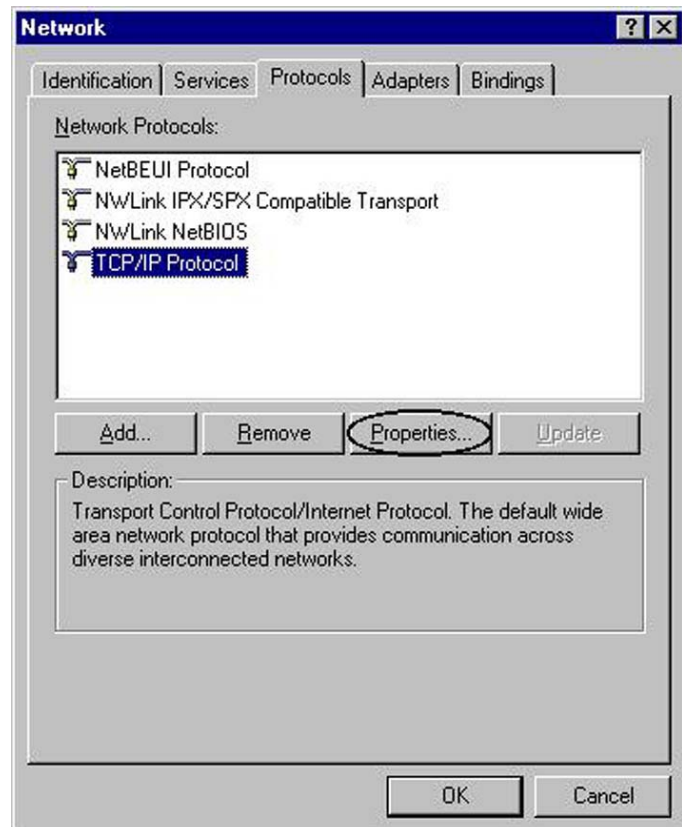


4. Then select the **DNS Configuration** tab.
5. Select the **Disable DNS** radio button and click **OK** to finish the configuration.

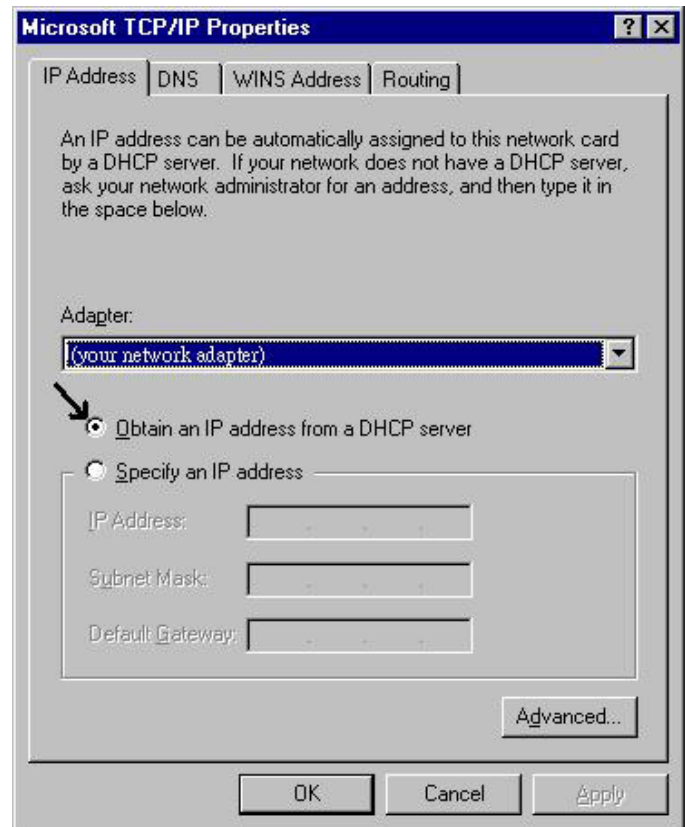


Configuring PC in Windows NT4.0

1. Go to **Start / Settings / Control Panel**. In the Control Panel double click on **Network** and choose the **Protocols** tab.
2. Select **TCP/IP Protocol** and click **Properties**.



3. Select the **Obtain an IP address from a DHCP server** radio button and click **OK**.

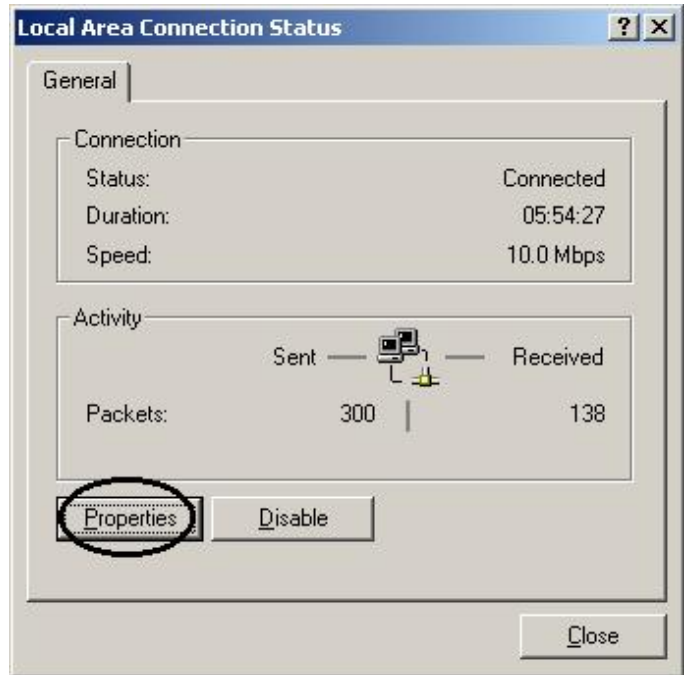


Configuring PC in Windows 2000

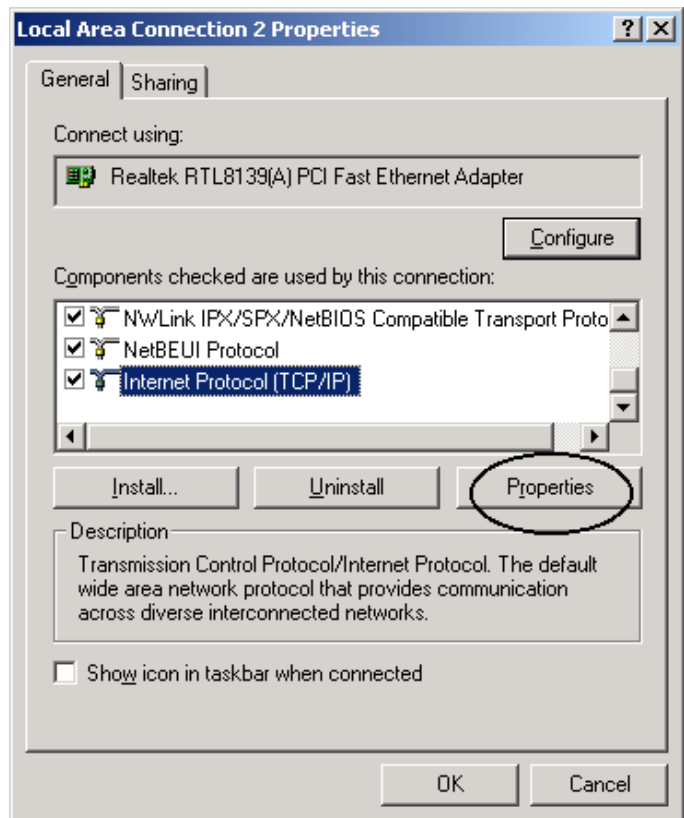
1. Go to **Start / Settings / Control Panel**. In the Control Panel double-click on **Network and Dial-up Connections**.
2. Double-click **Local Area Connection**.



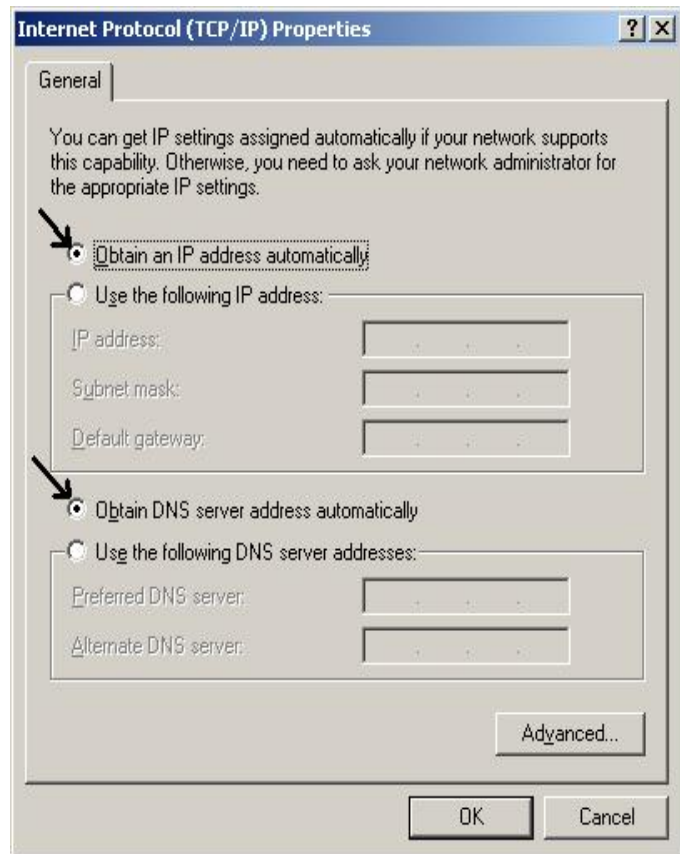
3. In the **Local Area Connection Status** window click **Properties**.



4. Select **Internet Protocol (TCP/IP)** and click **Properties**.



5. Select the **Obtain an IP address automatically** and the **Obtain DNS server address automatically** radio buttons.
6. Click **OK** to finish the configuration.

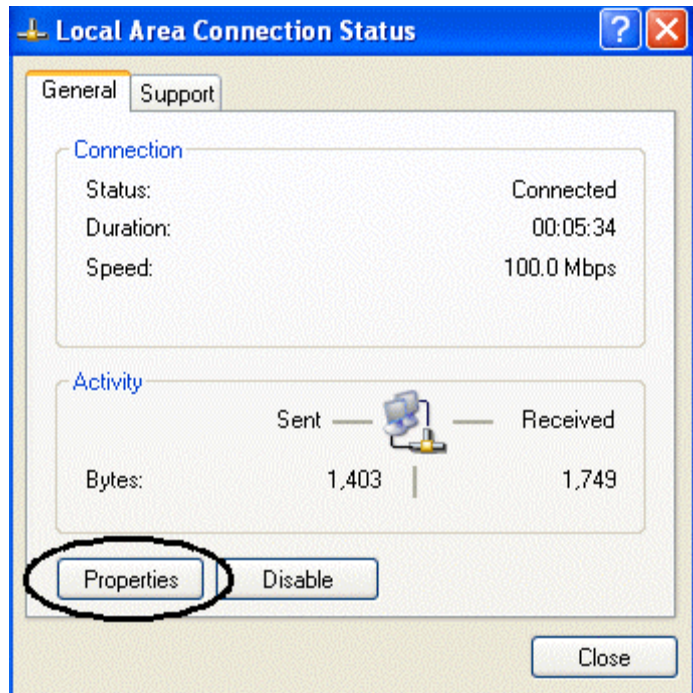


Configuring PC in Windows XP

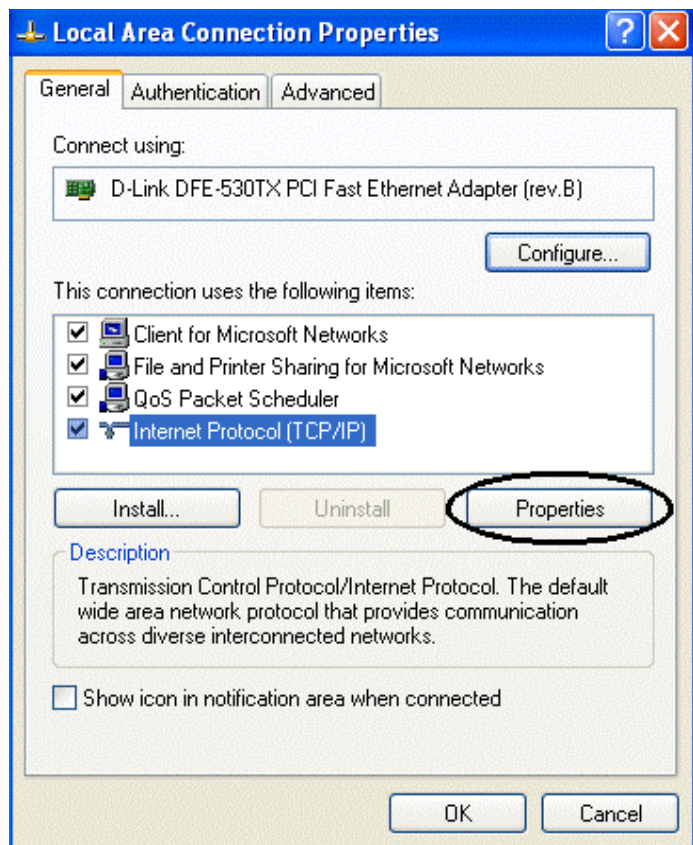
1. Go to **Start / Control Panel (in Classic View)**. In the Control Panel, double-click on **Network Connections**.
2. Double-click **Local Area Connection**.



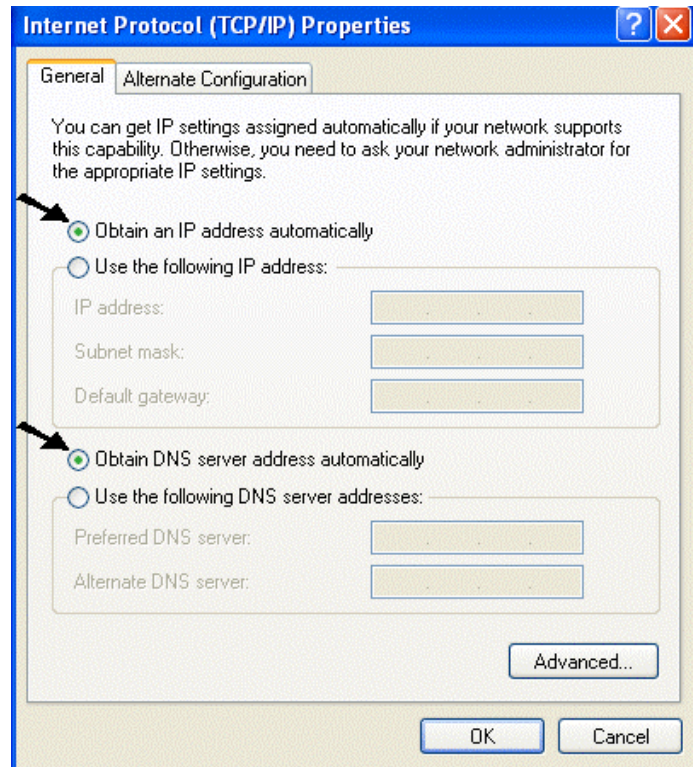
3. In the **Local Area Connection Status** window, click **Properties**.



4. Select **Internet Protocol (TCP/IP)** and click **Properties**.



5. Select the **Obtain an IP address automatically** and the **Obtain DNS server address automatically** radio buttons.
6. Click **OK** to finish the configuration.



Configuring the BIPAC-645

1. Start a web browser on any one of the PCs in the LAN and enter the following URL: <http://192.168.168.230>. You should see the following screen.



2. The default password (“password”) has already been entered for you. You can just click “Log On!” to log on. You may use the “System Tools” menu to change the password later.

Local Router Manager

Select the network interface for Internet access

I use Internet access over ISDN
 I use Internet access over EWAN

3. Make a decision either Internet access via EWAN or ISDN.

For EWAN

1. You need to make a decision about **Obtain IP Address Automatically**. Available options are **via PPP over Ethernet**, **via DHCP**, **via PPTP** or **No**.

CONFIGURATION

WAN Interfaces
 EWAN

Internet Access Time

MONITORING

System Status

Connection Log

SYSTEM TOOLS

System Upgrade

Configuration Data Options

Reset System

Change Password

Customize User Interface

HELP

Support

About System

Internet Access Configuration EWAN

Profile Name	ewanisp
Obtain IP Addresses Automatically	via DHCP
(Optional) Host Name (System Name)	Local Router

BIPAC-645 DSL/Cable Router plus ISDN Router

2. If you choose **via DHCP** for the selection of **Obtain IP Address Automatically**. The following screen will be displayed. Enter the following information and then Click **Apply**.

The screenshot shows the 'Internet Access Configuration' window for 'E WAN'. It contains a light blue box with the following fields: 'Profile Name' with the value 'ewanisp', 'Obtain IP Addresses Automatically' with a dropdown menu set to 'via DHCP', and '(Optional) Host Name (System Name)' with the value 'Broadband Router'. Below the box is an 'Apply' button.

3. If you choose **via PPP over Ethernet** for the selection of **Obtain IP Address Automatically**. The following screen will be displayed. Enter the following information and then Click **Apply and Test**.

The screenshot shows the 'Internet Access Configuration' window for 'E WAN'. It contains a light blue box with the following fields: 'Profile Name' with the value 'ewanisp', 'Obtain IP Addresses Automatically' with a dropdown menu set to 'via PPP over Ethernet', 'ISP Account Name' (empty), 'ISP Account Password' (empty), '(Optional) Service Name' (empty), '(Optional) Access Concentrator Name' (empty), and 'Idle Timeout (0-3600 seconds)' with the value '120'. Below the box is an 'Apply and Test' button.

4. If you choose **via PPTP** for the selection of **Obtain IP Address Automatically**. The following screen will be displayed. Enter the following information and then click **Apply and Test**.

Internet Access Configuration
E W A N

Profile Name	<input type="text" value="ewanisp"/>
Obtain IP Addresses Automatically	<input type="text" value="via PPTP"/>
Host Name (System Name)	<input type="text" value="Router"/>
PPTP Local IP Address	<input type="text"/> . <input type="text"/> . <input type="text"/> . <input type="text"/>
PPTP IP Netmask	<input type="text"/> . <input type="text"/> . <input type="text"/> . <input type="text"/>
PPTP Remote IP Address	<input type="text"/> . <input type="text"/> . <input type="text"/> . <input type="text"/>
ISP Account Name	<input type="text"/>
ISP Account Password	<input type="text"/>
Idle Timeout (0-3600 seconds)	<input type="text" value="120"/>

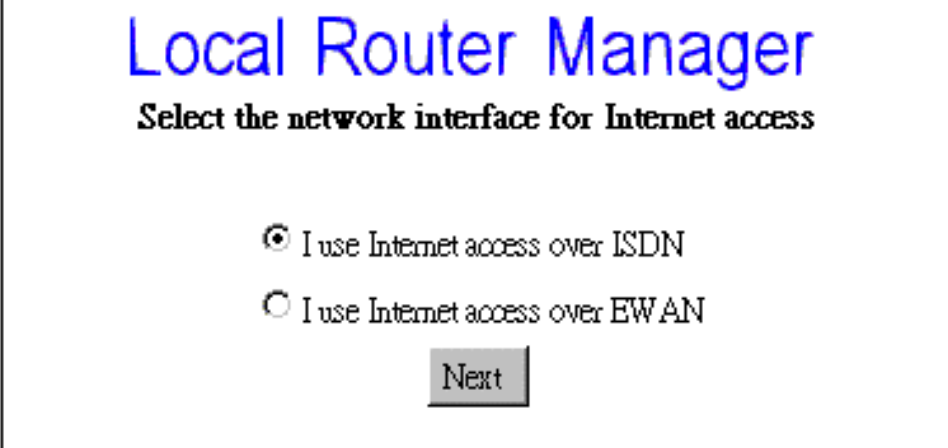
5. If you choose **No** for the selection of **Obtain IP Address Automatically**. The following screen will be displayed. Enter the following information and then Click **Apply**.

Internet Access Configuration
E W A N

Profile Name	<input type="text" value="ewanisp"/>
Obtain IP Addresses Automatically	<input type="text" value="No"/>
EWAN IP Address	<input type="text"/> . <input type="text"/> . <input type="text"/> . <input type="text"/>
EWAN IP Netmask	<input type="text"/> . <input type="text"/> . <input type="text"/> . <input type="text"/>
ISP Gateway IP Address	<input type="text"/> . <input type="text"/> . <input type="text"/> . <input type="text"/>
Primary DNS IP Address	<input type="text" value="199"/> . <input type="text" value="191"/> . <input type="text" value="129"/> . <input type="text" value="139"/>
Secondary DNS IP Address	<input type="text" value="199"/> . <input type="text" value="191"/> . <input type="text" value="144"/> . <input type="text" value="75"/>

For ISDN

1. Select **I use Internet Access over ISDN** and then click **Next**.

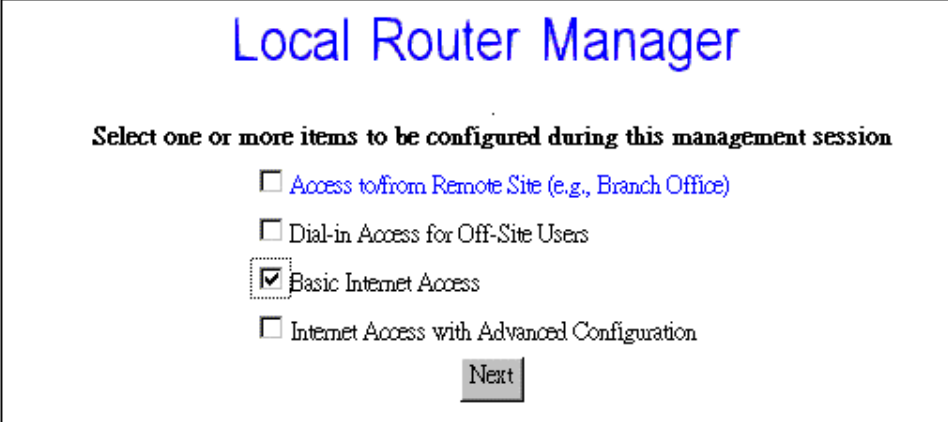


Local Router Manager
Select the network interface for Internet access

I use Internet access over ISDN
 I use Internet access over EWAN

Next

2. Select **“Basic Internet Access”** and press **“Next”**



Local Router Manager
Select one or more items to be configured during this management session

Access to/from Remote Site (e.g., Branch Office)
 Dial-in Access for Off-Site Users
 Basic Internet Access
 Internet Access with Advanced Configuration

Next

3. Enter the information about ISP.

Internet Access Configuration
ISDN

ISDN Switch Type	Europe (ETSI)
Number of Directory Phone Numbers	3
Directory Phone Number 1	<input type="text"/>
Directory Phone Number 2	<input type="text"/>
Directory Phone Number 3	<input type="text"/>
Remote Phone Number	<input type="text"/>
ISP Account Name	<input type="text"/>
ISP Account Password	<input type="text"/>



If the test is successful, your users will be ready to access the Internet. If not, the device will try to give you enough information to let you know why the connection is not successful.

Free Manuals Download Website

<http://myh66.com>

<http://usermanuals.us>

<http://www.somanuals.com>

<http://www.4manuals.cc>

<http://www.manual-lib.com>

<http://www.404manual.com>

<http://www.luxmanual.com>

<http://aubethermostatmanual.com>

Golf course search by state

<http://golfingnear.com>

Email search by domain

<http://emailbydomain.com>

Auto manuals search

<http://auto.somanuals.com>

TV manuals search

<http://tv.somanuals.com>