



BIPAC-711C2 / 710C2

ADSL Modem / Router

Quick Start Guide



For more detailed instructions on configuring and using the ADSL Modem/Router, please refer to the on-line manual.

Package Contents

- BIPAC-711C2 / 710C2 ADSL Router
- CD-ROM containing the online manual
- RJ-11 ADSL/telephone Cable
- Ethernet (CAT-5 LAN) Cable
- One USB cable (**for 711C2 only**)
- AC-DC power adapter (12VDC, 1A)
- This Quick Start Guide



Warning

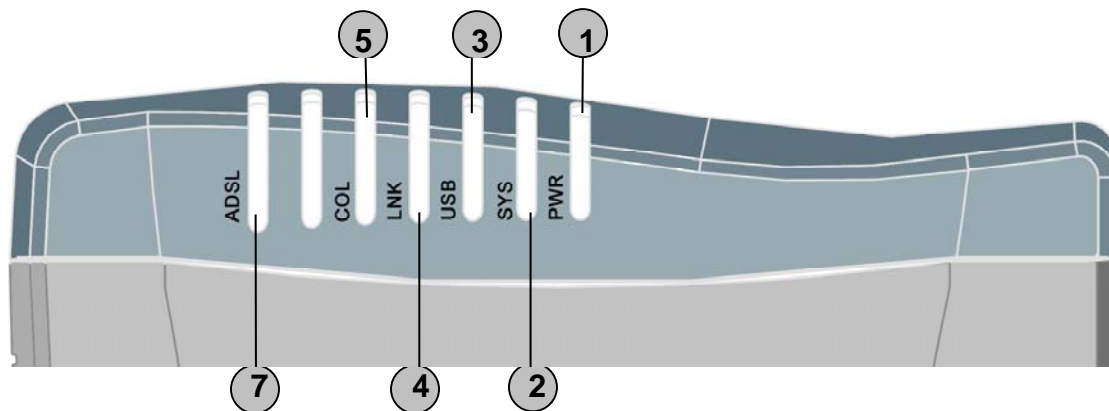
- ✓ Do not use the BIPAC-711C2 / 710C2 in high humidity or high temperatures.
- ✓ Do not use the same power source for the BIPAC-711C2 / 710C2 as other equipment.
- ✓ Do not open or repair the case yourself. If the BIPAC-711C2 / 710C2 is too hot, turn off the power immediately and have it repaired at a qualified service center.



Attention

- ✓ Place the BIPAC-711C2 / 710C2 on a stable surface.
- ✓ Only use the power adapter that comes with the package. Using a different voltage rating power adaptor may damage the router.

The Front LEDs

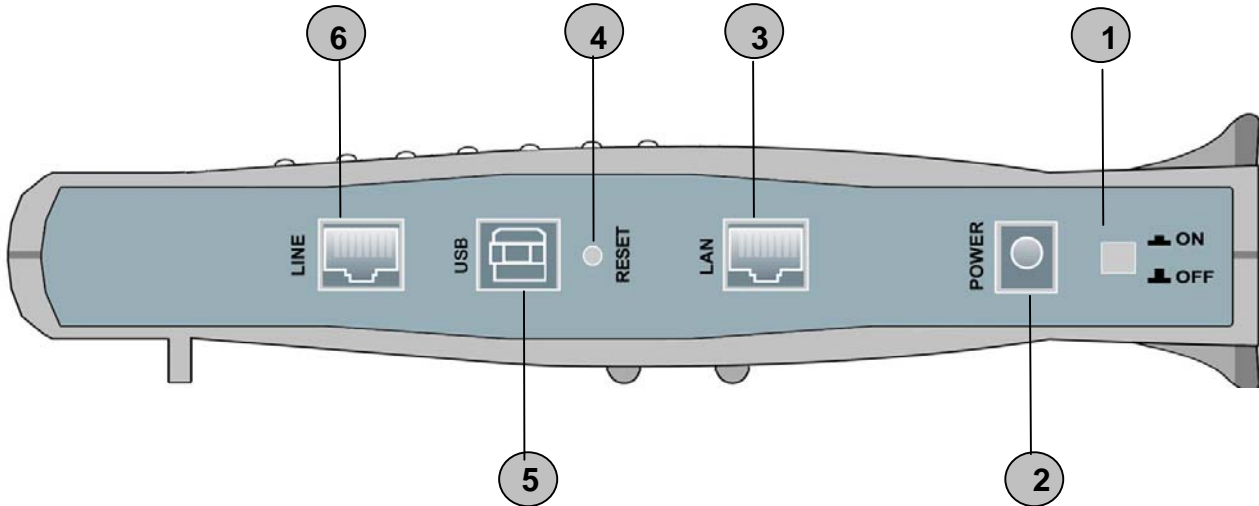


LED		Meaning
1	PWR	Lit green when power adapter is connected.
2	SYS	When lit, it indicates that the device is working properly.
3	USB	When this LED is lit, it indicates that the USB port is connected to the PC and working properly.
4	LNK	Lit green when the LAN link is connected.
5	COL	Flashes green when collision happens
7	ADSL	When lit, it indicates that the ADSL (Line) port is connected to the DSLAM and working properly.



The difference between BIPAC-711C2 and 710C2 is that BIPAC-710C2 does not have USB port; the rest functions are the same as BIPAC-711C2.

The Rear Ports



Port		Meaning
1	Power Switch	Power ON/OFF switch
2	PWR	Connect the supplied power adapter to this jack.
3	LAN (RJ-45 connector)	Connect the supplied crossover cable to this port when connecting to a NIC (Network Interface card) in PC. Connect an UTP Ethernet cable to this port when connecting to a LAN such as an office or home network.
4	RESET	Press it to restore the factory default setting back
5	USB (USB connector)	Connect the supplied USB cable to this port when connecting to the PC
6	LINE (RJ-11 connector)	Connect the supplied RJ-11 cable to this port when connecting to the ADSL

NOTE:

BIPAC-710C2 does not have USB port.

Connecting Your ADSL Modem/Router

Through Ethernet Port

1. Connect the Router to a **LAN** (Local Area Network) and the ADSL/telephone (**LINE**) network.
2. Power on the device.
3. Make sure the **PWR**, **SYS** and **LAN** LEDs are lit steadily
4. Follow the *“Configuring the Network Properties on a PC”* section on page 8 to modify the network settings

Through USB Port (for BIPAC-711C2 only)

1. Connect the USB cable to the USB port of the device and connect the other end to the PC. Also connect the device to the ADSL/telephone network.
2. Power on the device
3. Ensure the Power and LAN LEDs are lit
4. Follow the *“Installing the USB Driver on a PC”* section on page 5 to setup this device.



Installing the USB Driver on a PC (for BIPAC-711C2 only)



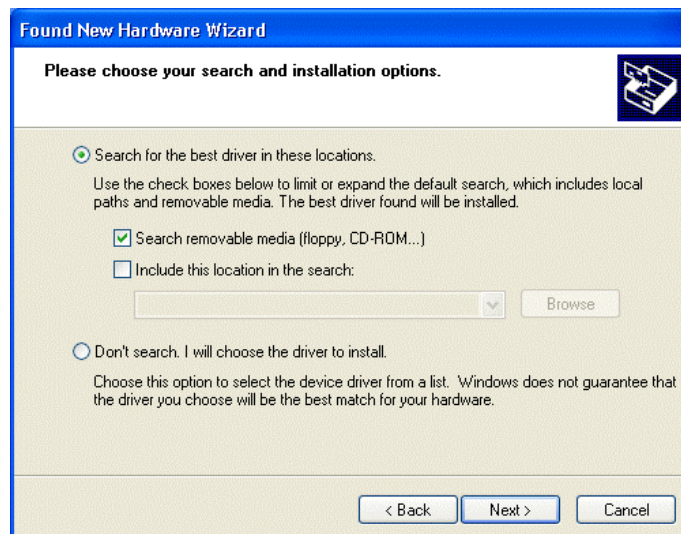
This section is described based on Windows XP. For other Operating Systems such as Windows 2000/Me/98, please refer to the on-line manual for more detailed instructions.

If you connect the device through USB port instead of Ethernet port, for the first time the USB cable is connected to the PC, Windows will automatically detect the device. Follow the steps to install the USB driver.

1. When Windows tells you that the new device has been detected, select “Install from a list or specific location” and click “Next >”.



2. Insert the installation CD into the CD-ROM drive. Check “Search removable media” and click “Next >”. Then, it takes seconds to search and install the software.



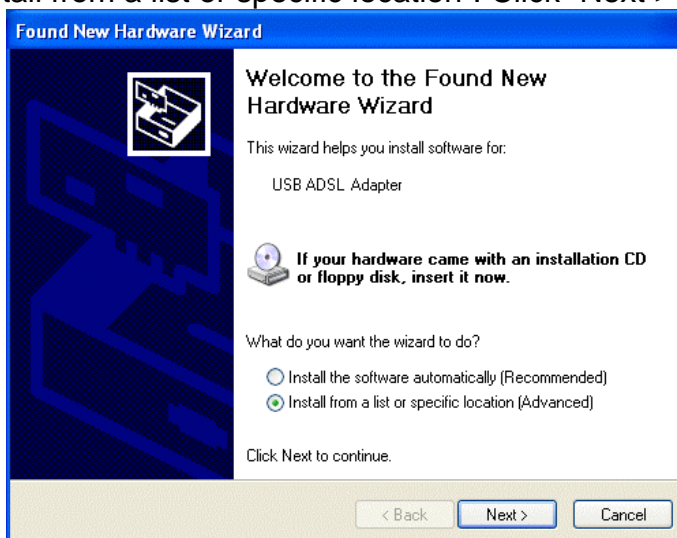
- When windows titled “Hardware Installation” or “Software Installation” appear, press “Continue Anyway” to go on.



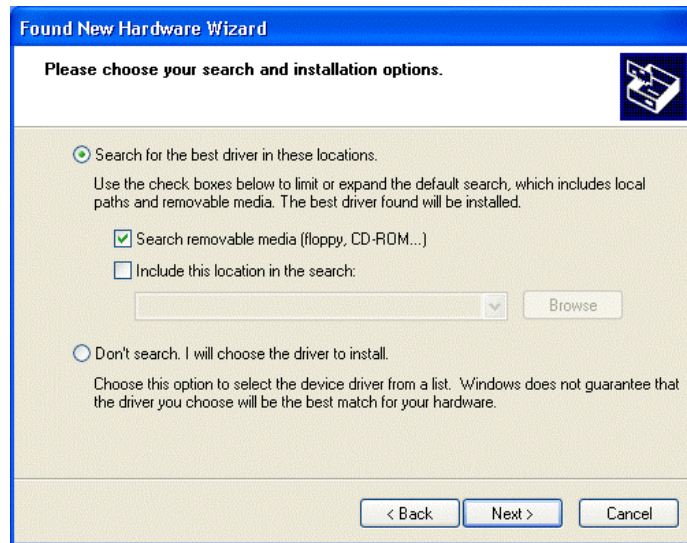
- Then, click “Finish”



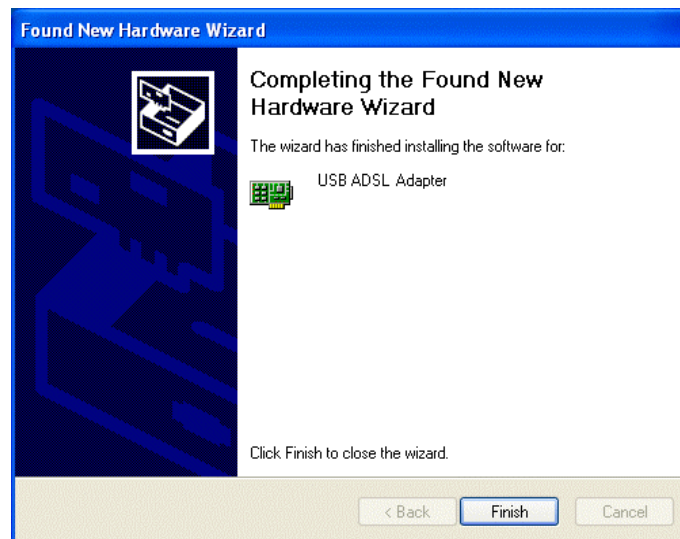
- After a few moments, Windows will show the new device, USB ADSL Adapter, has been detected. Select “Install from a list or specific location”. Click “Next >”.



6. Click “Next >” when the following figure appears.



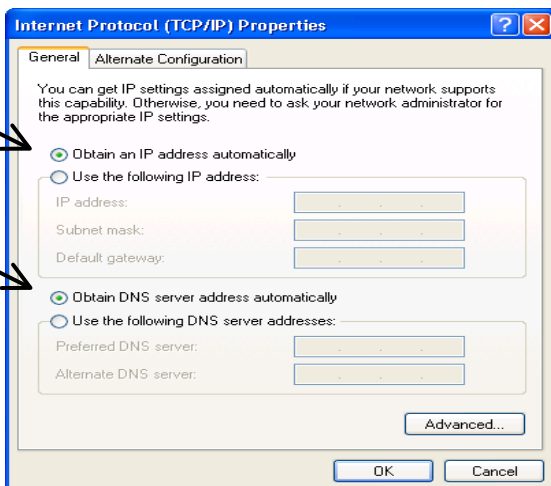
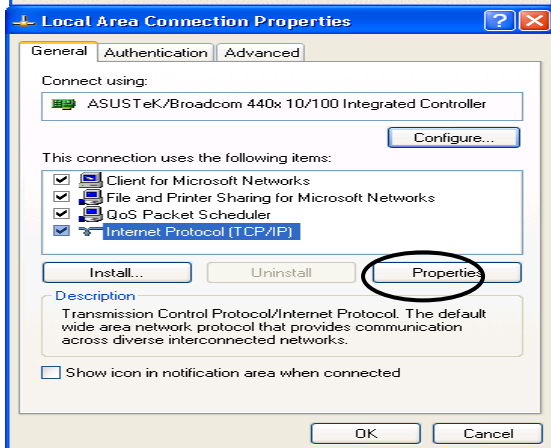
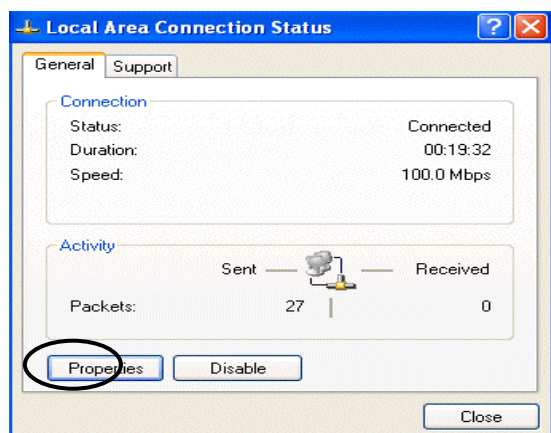
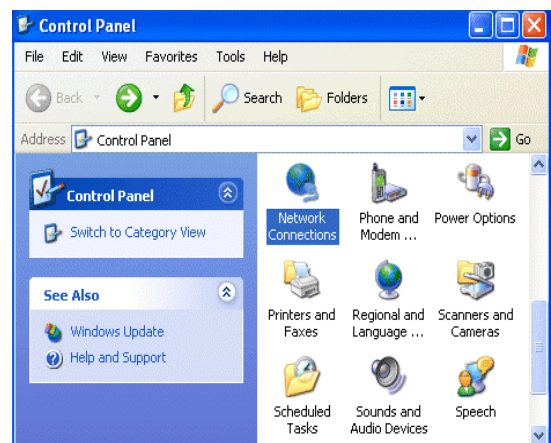
7. When windows titled “Hardware Installation” appears, press “Continue Anyway”. Then, click “Finish” to end installation.



8. After installing the driver, follow the next section to configure the network properties on the PC.

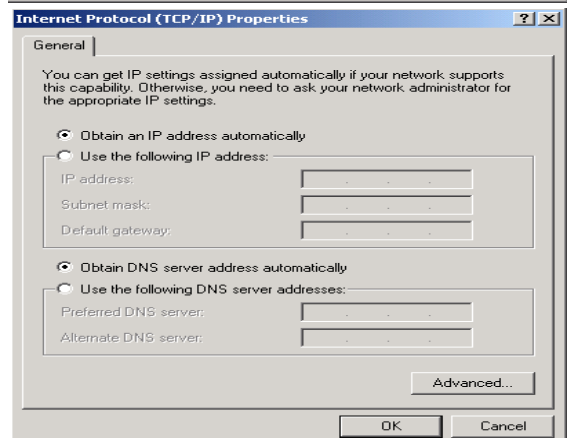
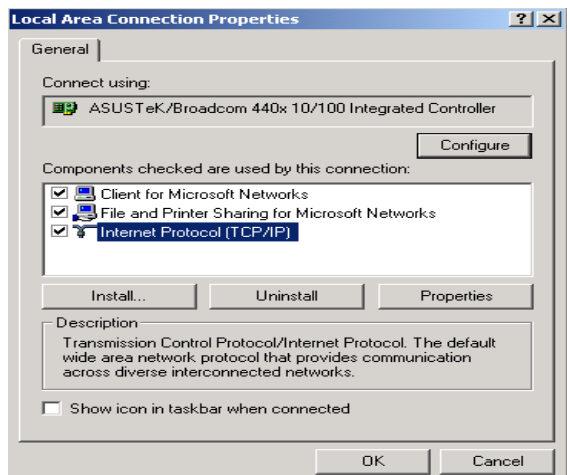
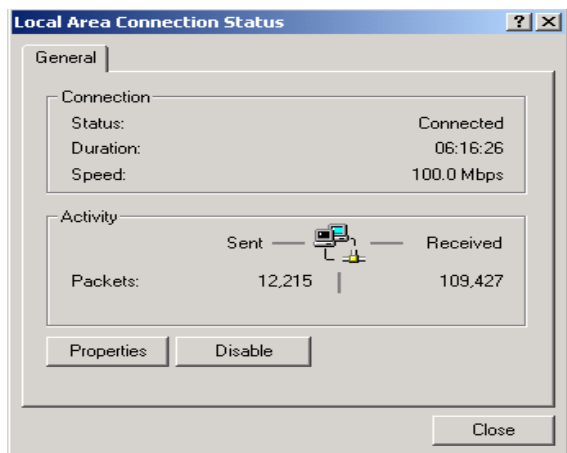
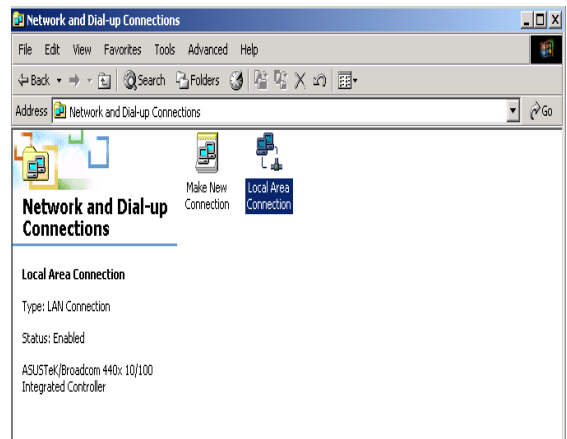
Configuring PC in Windows XP

1. Go to **Start / Control Panel (in Classic View)**. In the Control Panel, double-click on **Network Connections**
2. Double-click **Local Area Connection**.
3. In the **Local Area Connection Status** window, click **Properties**.
4. Select **Internet Protocol (TCP/IP)** and click **Properties**.
5. Select the **Obtain an IP address automatically** and the **Obtain DNS server address automatically** radio buttons.
6. Click **OK** to finish the configuration.



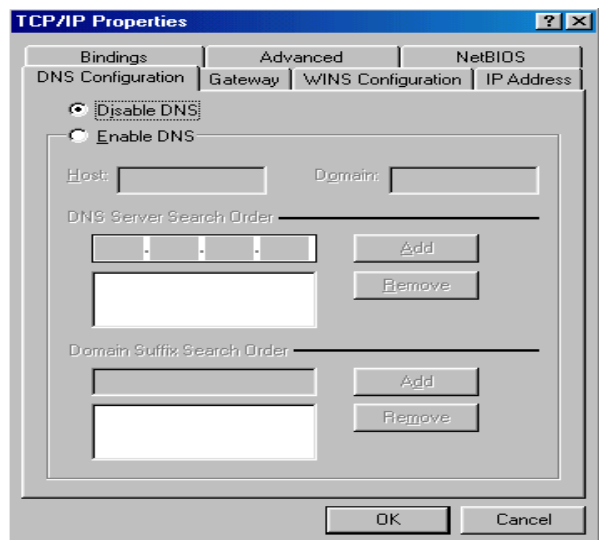
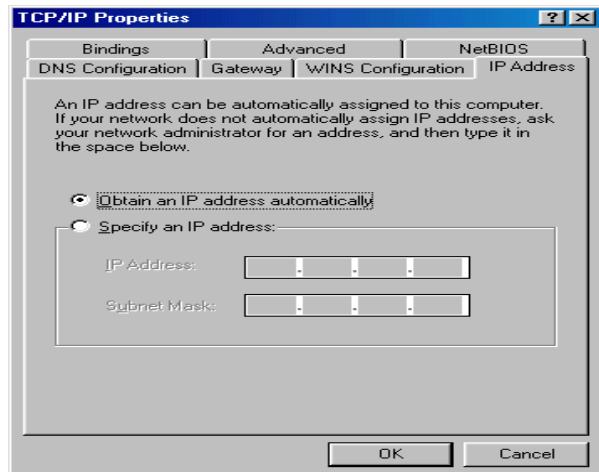
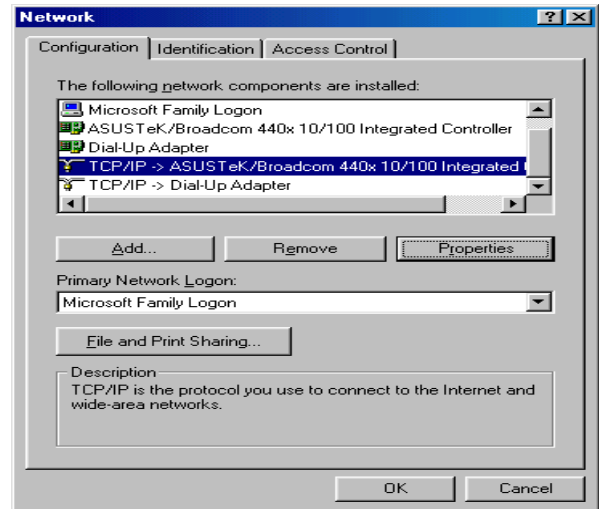
Configuring PC in Windows 2000

1. Go to **Start / Settings / Control Panel**. In the Control Panel, double-click on **Network and Dial-up Connections**.
2. Double-click **Local Area Connection**.
3. In the **Local Area Connection Status** window click **Properties**.
4. Select **Internet Protocol (TCP/IP)** and click **Properties**.
5. Select the **Obtain an IP address automatically** and the **Obtain DNS server address automatically** radio buttons.
6. Click **OK** to finish the configuration.



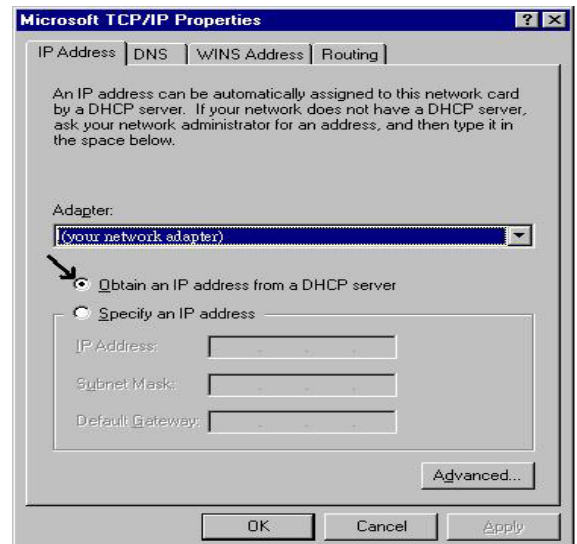
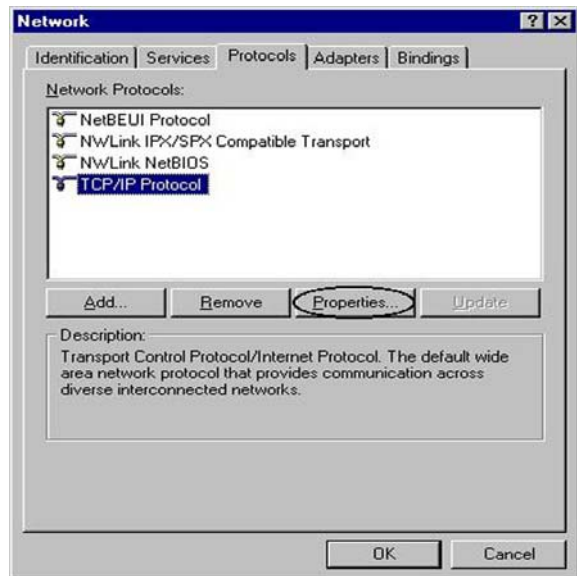
Configuring PC in Windows 98/Me

1. Go to **Start / Settings / Control Panel**. In the Control Panel, double-click on **Network** and choose the **Configuration** tab.
2. Select **TCP/IP -> NE2000 Compatible**, or the name of your Network Interface Card (NIC) in your PC.
3. Select the **Obtain an IP address automatically** radio button.
4. Then select the **DNS Configuration** tab.
5. Select the **Disable DNS** radio button and click **OK** to finish the configuration.



Configuring PC in Windows NT4.0

1. Go to **Start / Settings / Control Panel**. In the Control Panel, double-click on **Network** and choose the **Protocols** tab.
2. Select **TCP/IP Protocol** and click **Properties**.
3. Select the **Obtain an IP address from a DHCP server** radio button and click **OK**.



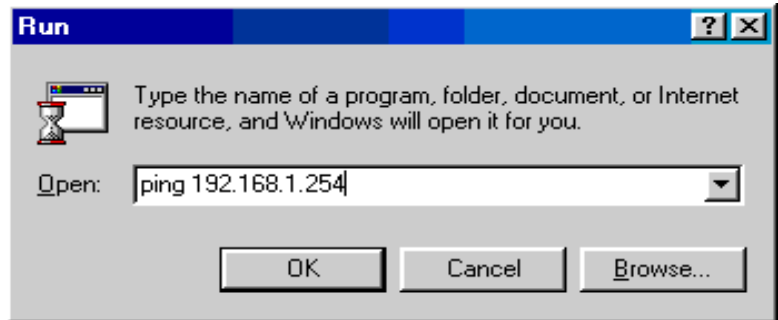
Configuring Your ADSL Modem/Router



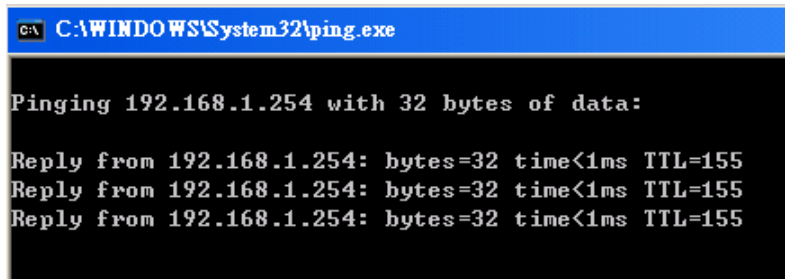
To configure this device, you must have IE 5.0 / Netscape 4.5 or above installed

■ Verifying Your Local Network Connection with the Device

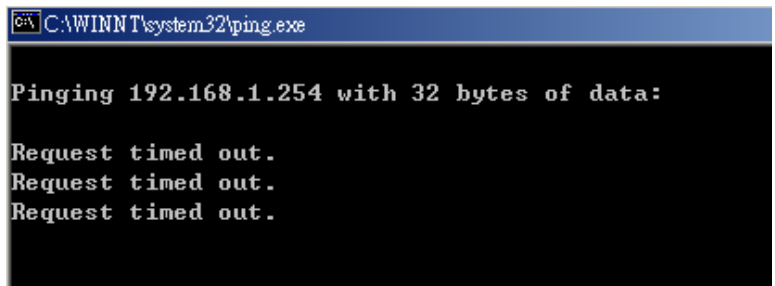
To see if this ADSL Router is visible on the local network, go to **Start / Run**. In the Run dialog box, type “**ping 192.168.1.254**” then press **OK**.



A command prompt window will pop out. If your ping is successful which means your local network is able to reach to the device, then the command prompt window will close up automatically.



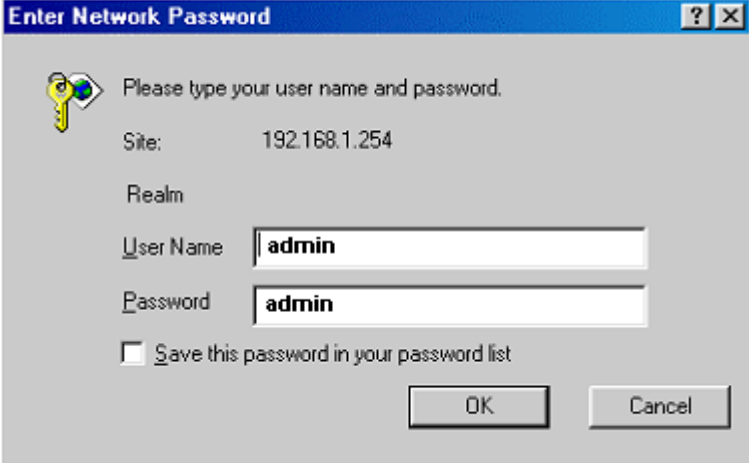
Connection fails, when you see “**Request timed out**” in the command prompt window. You may need to check your set up.



■ Connecting to the Router

Open the web browser and type <http://192.168.1.254> in the browser's address box. This number is the default IP address for this router. Press **Enter**.

A user name and password window will appear. **The default User Name and Password are "admin" and "admin"**. Press **OK** to logon to the router



Enter Network Password

Please type your user name and password.

Site: 192.168.1.254

Realm

User Name: admin

Password: admin

Save this password in your password list

OK Cancel

Product Support and Contact Information

Most problems can be solved by referring to the **Troubleshooting** section in the User's Manual. If you cannot resolve the problem with the **Troubleshooting** chapter, please contact the dealer where you purchased this product.

Contact Billion

AUSTRALIA

<http://www.billion.com.au/>

Hotline: 1300 139 159, 7 days a week.

©2004 Billion Electric Co., Ltd. PC Range P/L. All Rights Reserved.

WORLDWIDE

<http://www.billion.com/>

Mac OS is a registered Trademark of Apple Computer, Inc.
Windows 98, Windows NT, Windows 2000, Windows Me and Windows XP are registered Trademarks of Microsoft Corporation.

Free Manuals Download Website

<http://myh66.com>

<http://usermanuals.us>

<http://www.somanuals.com>

<http://www.4manuals.cc>

<http://www.manual-lib.com>

<http://www.404manual.com>

<http://www.luxmanual.com>

<http://aubethermostatmanual.com>

Golf course search by state

<http://golfingnear.com>

Email search by domain

<http://emailbydomain.com>

Auto manuals search

<http://auto.somanuals.com>

TV manuals search

<http://tv.somanuals.com>