

TT136 | Bendable Adhesive Dash or Console Mount for TomTom® GPS



Package Contents:

- (1) CM021-SB-2 - Bendable adhesive dash mount
- (1) APTTO - Adapter plate for TomTom ONE™ Series
- (1) APTTOXL - Adapter plate for TomTom ONE XL / XL-S™ Series
- (1) APTTGO520 - Adapter plate for TomTom GO™ Series
- (1) APTTEP - Adapter plate for TomTom EasyPort™ Series

TomTom Device Compatibility:

- TomTom ONE 130, ONE 130-S (TomTom EasyPort Mount)
- TomTom ONE (US Edition, US 3rd Edition)
- TomTom ONE XL (1st Edition) - TomTom ONE XL-S (1st Edition)
- TomTom ONE 22, ONE 22 Regional, ONE 22 Regional Traffic
- TomTom XL 22, XL 22 Regional (TomTom EasyPort Mount)
- TomTom XL 330, XL 330-S (TomTom EasyPort Mount)
- TomTom ONE UK / EUROPE (NEW Edition aka 2nd Edition, 3rd Edition)
- TomTom GO 520 / 530 / 720 / 730 / 920 / 920T / 930

TomTom, ONE, GO, and EasyPort are product names, trademarks, or registered trademarks of TomTom International BV. Arkon Resources, Inc. is not affiliated with TomTom International BV.

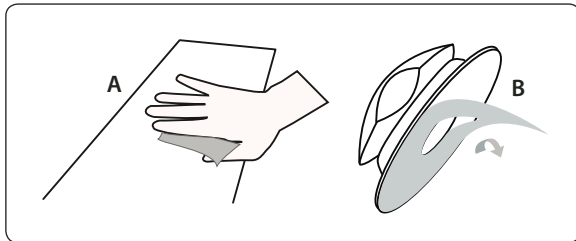
⚠ Do not place mount in or near an air bag deployment zone or where it will obstruct view of the road.

Dash or Console Installation

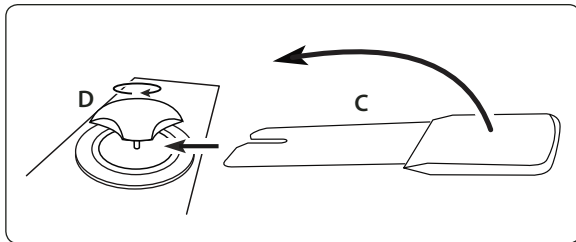
Step 1. Choose the best location on vehicle to place the mount.

Clean off dash or console surface with alcohol cleaning pad and let dry. **(A)** Do not attempt application of the dash mount if the temperature is below 68° F (20°C).

Remove paper liner from adhesive on base **(B)** and affix adhesive to the dash or console. (Let stand at room temperature for 24 hours before using.)

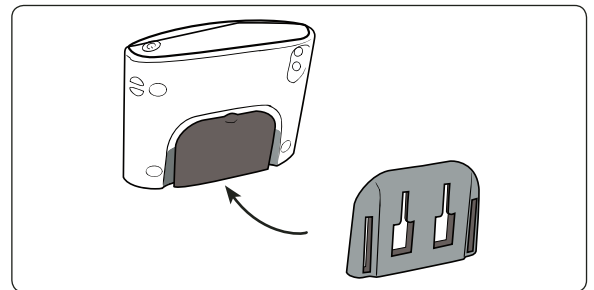


Step 2. Adjust the angle of the pedestal head by bending the flexible metal strip **(C)**. Rotate the strip and tighten the base cap. **(D)**



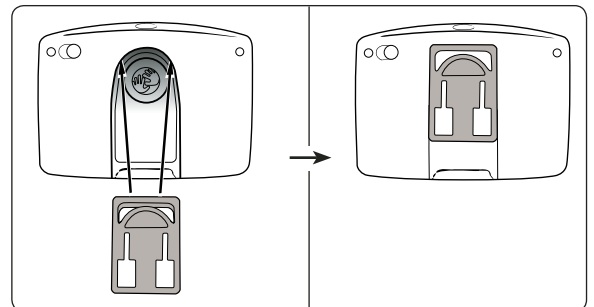
TomTom ONE, ONE XL, and ONE XL-S Plate Installation

Step 1. Slide the adapter plate up into the grooves on the back of the TomTom ONE, ONE XL, or ONE XL-S.



TomTom GO Adapter Plate Installation

Step 1. Attach the adapter plate by sliding it up into the slot on the back of the TomTom GO 520, 530, 720, 730, 920, 920T, and 930 models device as shown below.



⚠ Safety Precautions

Do not install Arkon products over an air bag cover or within the air bag deployment zone. Arkon Resources, Inc. assumes no responsibility of liability for injury or death as a result of car crashes and/or air bag deployment.

Arkon is not responsible for any damages caused to your car, your device, or yourself due to the installation or use of this pedestal mount.

ARKON
RESOURCES INC.

The Mobile Mounting Specialists™

Consumer Hotline:

USA (800) 841-0884

INT'L (626) 254-9005

Monday - Friday 9 am - 5 pm, PST

www.arkon.com

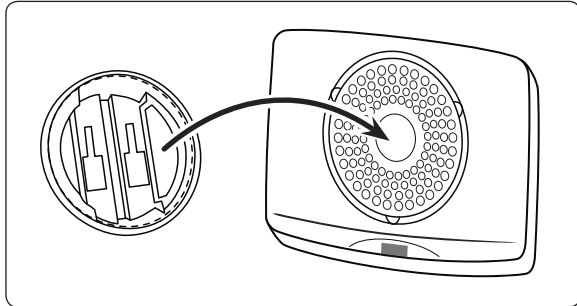
Arcadia, CA 91006 USA

Designed in USA | Made in China and Taiwan

© Copyright 2008 Arkon Resources, Inc.

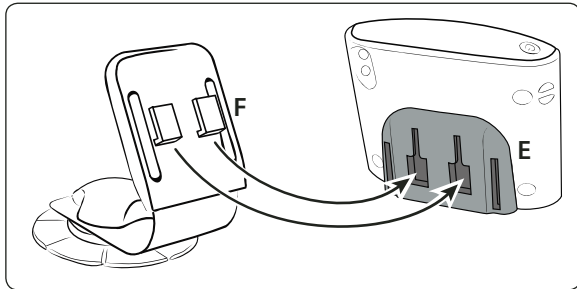
TomTom EasyPort Adapter Plate Installation

Step 1. While holding the adapter plate, gently insert the device (not included, sold separately) into the adapter plate until an audible click is heard.



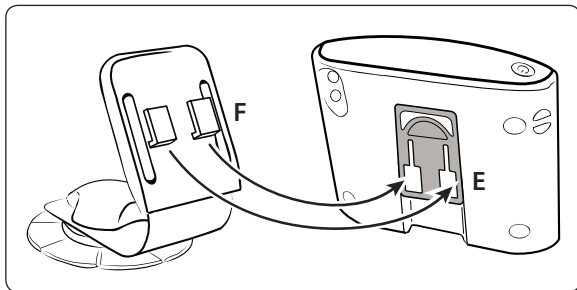
TomTom ONE and ONE XL Device Attachment

Step 1. Connect the dual T-slots (E) on the back of the adapter plate to the dual T-tabs (F) on the dash pedestal head.



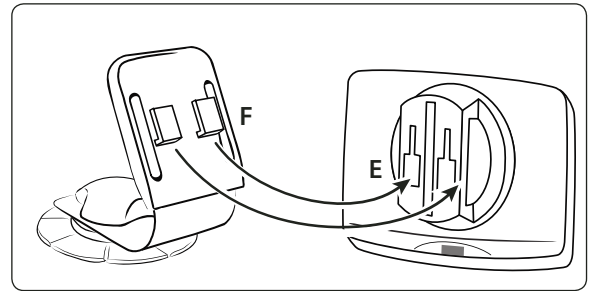
TomTom GO Series Device Attachment

Step 1. Connect the dual T-slots (E) on the back of the adapter plate to the dual T-tabs (F) on the dash pedestal head.



TomTom EasyPort Device Attachment

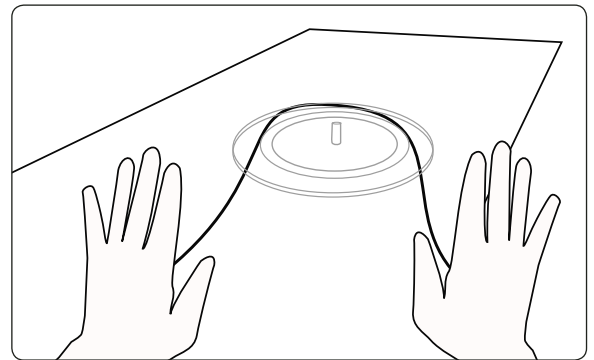
Step 1. Connect the dual T-slots (E) on the back of the adapter plate to the dual T-tabs (F) on the dash pedestal head.



TomTom EasyPort Device Attachment

Step 1. Removal of Dash Mount

To remove the dash mount completely, use a cotton swab dipped in isopropyl alcohol. Simply peel up a corner of the dash mount adhesive and swab under the pad while gently pulling until the adhesive begins to release. Remove slowly. No damage will occur from the adhesive if it has been properly installed and removed per these instructions. You may see a slight discoloration between this area and other parts of your dash due to fading caused by the sun.



Safety Precautions

Do not install Arkon products over an air bag cover or within the air bag deployment zone. Arkon Resources, Inc. assumes no responsibility of liability for injury or death as a result of car crashes and/or air bag deployment.

Arkon is not responsible for any damages caused to your car, your device, or yourself due to the installation or use of this pedestal mount.



The Mobile Mounting Specialists™

Consumer Hotline:

USA (800) 841-0884

INT'L (626) 254-9005

Monday - Friday 9 am - 5 pm, PST

www.arkon.com

Arcadia, CA 91006 USA

Designed in USA | Made in China and Taiwan

© Copyright 2008 Arkon Resources, Inc.

Free Manuals Download Website

<http://myh66.com>

<http://usermanuals.us>

<http://www.somanuals.com>

<http://www.4manuals.cc>

<http://www.manual-lib.com>

<http://www.404manual.com>

<http://www.luxmanual.com>

<http://aubethermostatmanual.com>

Golf course search by state

<http://golfingnear.com>

Email search by domain

<http://emailbydomain.com>

Auto manuals search

<http://auto.somanuals.com>

TV manuals search

<http://tv.somanuals.com>