

16-Port Type 3 MAU

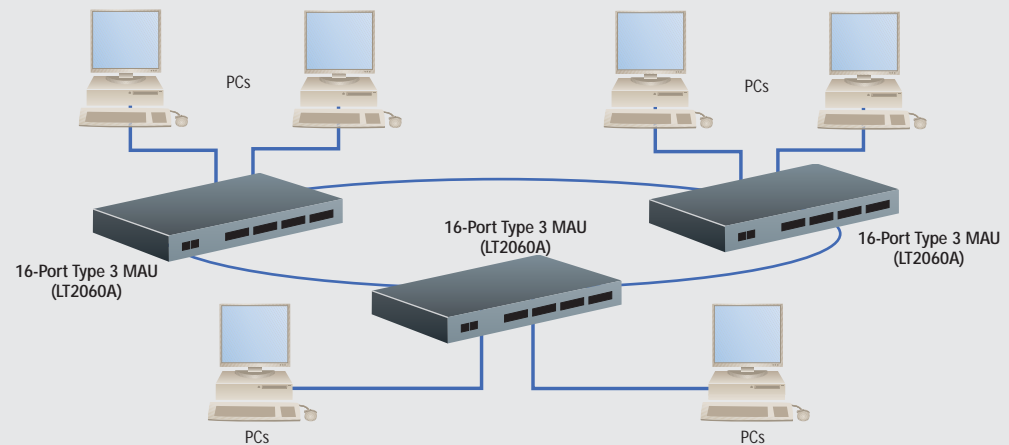


Give your high-density wiring closets
additional ports.

FEATURES

- Serves as a wiring concentrator for your Token Ring.
- 16 lobe ports in a single 1U-high chassis.
- Compatible with IBM 8228 MAUs.
- Test lobes with port reset button. LEDs show port status.
- No external relay tool required.
- Ring-In, Ring-Out auto wrap.
- Nonpowered, so you can put it where you want it!

Three MAUs are connected together to form the main ring.



OVERVIEW

Need additional twisted-pair Type 3 ports in your Token Ring LAN? Choose the 16-Port Type 3 MAU. It functions as a wiring hub, so you can create a star wiring configuration from the main ring to individual Token Ring workstations.

Like the IBM 8228 MAUs, this MAU features Ring In (RI) and Ring Out (RO) connections on the front panel.

This MAU provides up to 16 additional ports for high-density applications and does so without the need for AC power and the use of a costly insertion tool for installation.

Since no AC power is required, the MAU provides flexibility when deciding where to locate the wiring installation, which may include non-air-conditioned areas, such as warehouses and closets.

A long-life lithium battery provides power to a circuit that allows the manual reset of all lobe circuits. Simply press a button to reset the ports. This eliminates the need for an insertion tool during installation.

Status LEDs are powered by the attaching Token Ring adapters and provide a visual indication of connect status.

The MAU automatically detects cable removal and wraps the RI or RO port, so there's no network downtime!

Shielded RJ-45 connectors on the lobe ports provide support for UTP or STP 100-ohm cable. Use UTP cabling for

cheaper cabling costs. Or, use 100-ohm STP cabling for greater distances.

The MAU operates at 4 or 16 Mbps. No configuration switches are required.

Choose the mounting method you prefer—flush or recessed rackmount, wall- or shelf-mounted. Rack ears, along with a RI/RO loopback cable, are included with the MAU.

TECH SPECS

Compliance — FCC Class A; CE

Standard — IEEE 802.5

Speed — 4 or 16 Mbps

Connectors — (16) shielded RJ-45, (1) Ring In, (1) Ring Out

Indicators — LEDs: (16) Port Status, (1) Reset

Temperature Tolerance — Operating: 32 to 122°F (0 to 50°C)

Humidity Tolerance — Up to 95%, noncondensing

Power — Nonpowered; reset button powered by lithium battery (included)

Size — 1.7"H x 17.2"W x 6"D (4.3 x 43.7 x 15.2 cm)

Weight — 3.5 lb. (1.6 kg)

Item	Code
16-Port Type 3 MAU	LT2060A

Free Manuals Download Website

<http://myh66.com>

<http://usermanuals.us>

<http://www.somanuals.com>

<http://www.4manuals.cc>

<http://www.manual-lib.com>

<http://www.404manual.com>

<http://www.luxmanual.com>

<http://aubethermostatmanual.com>

Golf course search by state

<http://golfingnear.com>

Email search by domain

<http://emailbydomain.com>

Auto manuals search

<http://auto.somanuals.com>

TV manuals search

<http://tv.somanuals.com>