

13

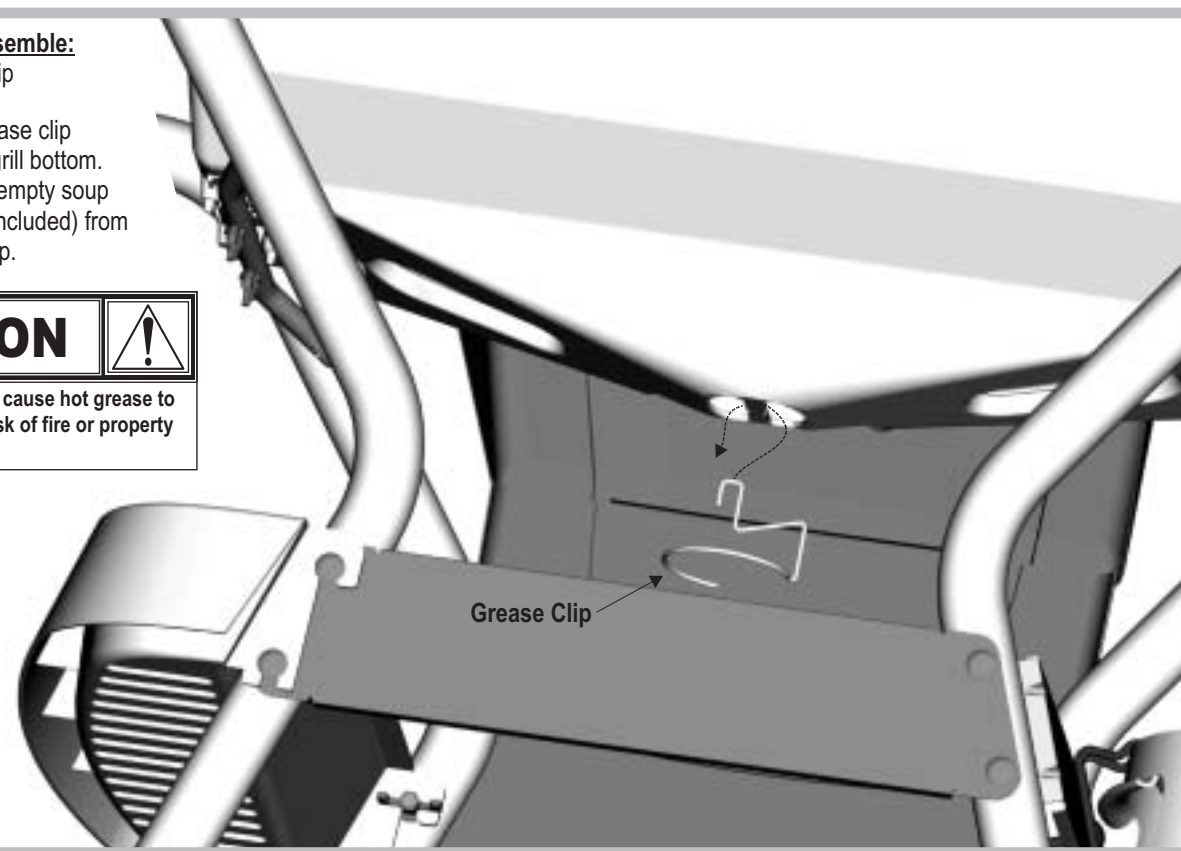
Parts to assemble:
1 Grease Clip

- A. Hang grease clip beneath grill bottom.
- B. Hang an empty soup can (not included) from grease clip.

CAUTION

• Failure to install can in clip will cause hot grease to drip from bottom of grill with risk of fire or property damage.

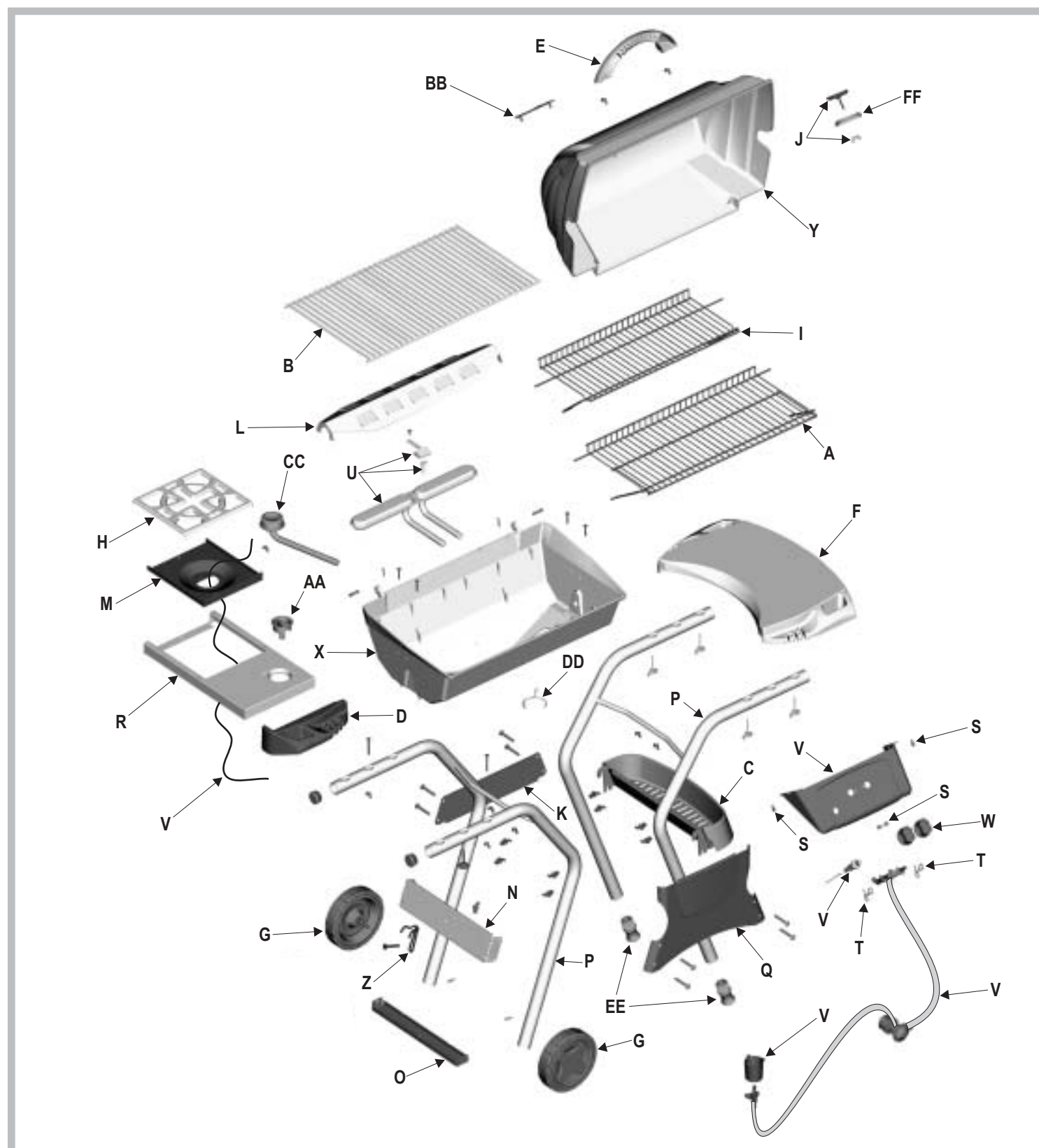
Rear view of grill.



Parts List - Model 463742704

Key	Qty.	Description	Part #	Key	Qty.	Description	Part#
A	1	Lower SwingAway	4152124	W	2	Control Knob	4154470
B	1	Cooking Grate	4152739	X	1	Grill Bottom	4580184
C	1	Condiment Basket	4154271	Y	1	Grill Lid	4580587
D	1	Tool Holder	4154273	Z	1	Tank Retainer Wire	4151018
E	1	Handle	4154488	AA	1	Sideburner Knob	4154471
F	1	Side Shelf	4154542	BB	1	Logo Plate	4157147
G	2	Wheel Assembly	4310002	CC	1	Sideburner	5068026
H	1	Sideburner Grate	4156179	DD	1	Grease Clip	5156607
I	1	Upper SwingAway	4156448	EE	2	Leg Extender	4154540
J	1	Temperature Gauge with Wing Nut	4157171	FF	1	Temperature Gauge Bezel	4157169
K	1	Back Support Brace	4500251		1	Hardware Bag, Cart	4254079
L	1	V Bar	4500290		1	Hardware Bag, Shelf	4254050
M	1	Sideburner Frame	4501705		1	Hardware Bag, Sideburner	4254086
N	1	Side Support Brace	4503120				
O	1	Tank Support Bracket	4503122				
P	2	Leg Assembly	4503229				
Q	1	Front Panel	4503136				
R	1	Sideburner Body	4310005				
S	4	#10x1/2", T-20, Self-Tap Screw	4080043				
T	2	Valve Clip	4151043				
U	1	Burner/Collector Assembly	4505084				
V	1	Control Panel Assembly	4530184				

Optional Assembly Hardware
We realize some customers prefer to use tools. **Optional hex nuts** have been provided for you to use.



NOTHING SHOULD COME BETWEEN A MAN AND HIS FLAME.



463742704 / 0-4165374 (12-03-03)

QUICKSET®

463742704
ASSEMBLY MANUAL



THIS GRILL IS FOR OUTDOOR USE ONLY

CAUTION: Read and follow all safety statements, assembly instructions, and use and care directions before attempting to assemble and cook.

INSTALLER/ASSEMBLER: Leave these instructions with consumer.

CONSUMER: Keep this manual for future reference.

WARNING

Failure to follow all manufacturer's instructions could result in serious personal injury and/or property damage.

CAUTION

Some parts may contain sharp edges – especially as noted in the manual! Wear protective gloves if necessary.

If you have any questions or need assistance during assembly, please call 1-800-241-7548.

Visit us on the web at:
www.charbroil.com

Char-Broil®
KEEPERS OF THE FLAME
COLUMBUS, GA

Free Manuals Download Website

<http://myh66.com>

<http://usermanuals.us>

<http://www.somanuals.com>

<http://www.4manuals.cc>

<http://www.manual-lib.com>

<http://www.404manual.com>

<http://www.luxmanual.com>

<http://aubethermostatmanual.com>

Golf course search by state

<http://golfingnear.com>

Email search by domain

<http://emailbydomain.com>

Auto manuals search

<http://auto.somanuals.com>

TV manuals search

<http://tv.somanuals.com>