

BASIC

INTERMEDIATE

ADVANCED

COMPLETE

ALL-POINTS SECURITY

Tamper-resistant hardware at all key connection points to deter theft.

RPA Series



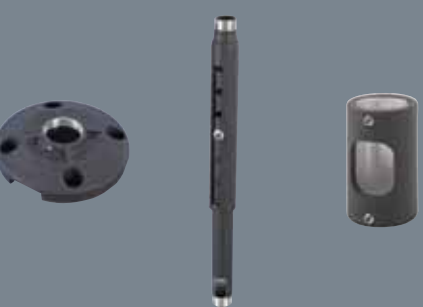
- RPAxxx Custom Projector Mount ■
- RPAU Universal Projector Mount ■ ■ ■

RPA Elite Series



- RPMxxx Custom Projector Mount ■
- RPMU Universal Projector Mount ■ ■ ■

Accessories



- CMS115 Ceiling Plate ■ ■ ■
- CMS0xx0xx Adjustable Extension Column ■ ■ ■
- CMA152 1.5" to 1.5" NPT Coupler ■ ■

PROJECTOR LOCKS

Secures mount with key and lock security combined with All-Points Security.

PL Series



- PL1(A/B/C) Projector Lock ■
- PL2(A/B/C) Mini Projector Lock ■

*For use with RPA-xxxx Series

RPA Elite with Q-Lock



- RPM(A/B/C)xxxx Custom Projector Mount with Q-Lock Key Option A, B or C ■
- RPM(A/B/C)U Universal Projector Mount with Q-Lock Key Option A, B or C ■ ■ ■

SECURITY MOUNTS

All-in-one security solution, relies on key and lock security (no exposed fasteners).

RPA Security Series



- RPA(A/B/C)1 All-In-One Universal Security Mount with Key Option A, B or C ■ ■

RPA Elite Security Series



- RPM(A/B/C)1 All-In-One Universal Security Mount with Q-Lock Key Option A, B or C ■ ■

SECURITY CABLES

Add additional security to any installation with security cables.

PMSC



- PMSC ■

*For use with RPA(A/B/C)1 and RPM(A/B/C)1 Series

HC1



- HC1 Heavy Duty Cable System ■

Cable Locks



- LC1 Cable Lock ■
- PL4 Projector Lock ■

Anchor Points



- SA1 Security Anchor ■
- SSC4 Security Screw Cover Kits ■

PROJECTOR GUARDS

Encloses the mount and projector inside a steel cage for ultimate security.

PG1 Series



- PG1A Projector Guard ■ ■

PG2 Series



- PG2A Projector Guard ■ ■

🔑 = Includes Key and Lock Security

CHIEF MANUFACTURING
www.chiefmfg.com

USA/INTERNATIONAL
P 800.582.6480 ■ 952.894.6280
F 877.894.6918 ■ 952.894.6918
chief@chiefmfg.com

CHIEF MOUNTS CANADA
P 877.345.4329 ■ F 888.377.5314
info@chiefmounts.ca

©2008 Milestone AV Technologies. Chief is a division of Milestone. Chief and the Chief logo are registered trademarks of Milestone. All other brand names or marks are used for identification purposes and are trademarks of their respective owners. All patents are protected under existing designations. Other patents pending.

Printed in the USA, 100076C 6/08

CEILING MOUNT SELECTION GUIDE



STEP BY STEP instructions

STEP 1
CEILING STRUCTURAL SUPPORT

WOOD JOIST



MAX WEIGHT: 500 lbs (227 kg)
MAX WEIGHT: 500 lbs (227 kg)

CMS115™ Ceiling Plate
CMS390™/391™ Dual Joist Ceiling Plate

CONCRETE



MAX WEIGHT: 500 lbs (227 kg)

CMA330™ Offset Ceiling Plate
CMA345™ Shock-Absorbing Ceiling Plate


TRUSS



MAX WEIGHT: 250 lbs (113 kg)

CMA365™ Truss Ceiling Adapter
CMA366™ Architectural Spanning Adapter

UNISTRUT



MAX WEIGHT: 500 lbs (227 kg)

CMA372™ Offset Unistrut Adapter
CMA110™ Ceiling Plate

I-BEAM



MAX WEIGHT: 500 lbs (227 kg)

CMA360™ I-Beam Clamp

PIPE



MAX WEIGHT: 250 lbs (113 kg)
MAX WEIGHT: 300 lbs (136 kg)

CMA365™ Truss Ceiling Adapter
CMA300™ Pipe Clamp


SUSPENDED



MAX WEIGHT: 50 lbs (23 kg)

CMS440P™ Ceiling Kit with PX2W Power
CMS440™ Above Tile Ceiling Kit

SUSPENDED



MAX WEIGHT: 50 lbs (23 kg)

CMS445P™ Ceiling Kit with PX2W Power
CMS445™ Replacement Tile Ceiling Kit

GENERAL PURPOSE



MAX WEIGHT: 500 lbs (227 kg)

CMA105™ 4" Ceiling Plate
CMA110™ 8" Ceiling Plate
CMA115™ 6" Ceiling Plate

VAULTED



MAX WEIGHT: 500 lbs (227 kg)

CMA395™ Angled Ceiling Mount

ACCESSORIES

CONCRETE



CMA380™ Concrete Fastener

SUSPENDED



CMA470™ Above Tile Enclosure
CMA471™ Large Enclosure

POWER OUTLET



PX2W™ Power Conditioner

STEP 2
EXTENSION COLUMN

COLUMN




MAX WEIGHT: 500 lbs (227 kg)

Fixed: CMS-0xx	DROP DISTANCE							
	3"	6"	9"	12"	18"	24"	36"	48"
Adjustable: CMS-0xx0xx	CMS003™	CMS006™	CMS009™	CMS012™	CMS018™	CMS024™	CMS036™	CMS048™
Colors Options:	-	CMS006009™	CMS006009™	CMS009012™	CMS012018™	CMS018024™	CMS0203™	CMS0305™
	60"	72"	84"	96"	108"	120"	132"	
	CMS060™	CMS072™	CMS0507™	CMS0608™	CMS0709™	CMS0810™	CMS0911™	-
	CMS0406™	CMS0507™	CMS0608™	CMS0709™	CMS0810™	CMS0911™	-	-


ACCESSORIES

CABLE MANAGEMENT



CMA275™ Cable Cover

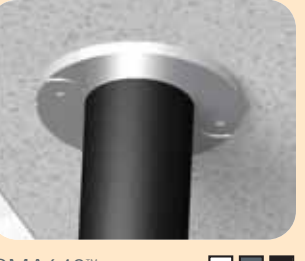
STABILITY SUPPORT



MAX WEIGHT: 500 lbs (227 kg)

CMA340™ Support Bracket & Cable Assembly


AESTHETICS



CMA640™ Finishing Ring

STEP 3
IN-LINE COLUMN ADAPTER

COUPLER



MAX WEIGHT: 500 lbs (227 kg)

CMA270™ 1-1/2" NPT Coupler
CMA152™ 1-1/2" NPT Coupler with Port

SWIVEL



MAX WEIGHT: 500 lbs (227 kg)

CMA351™ Swivel Adapter

ELECTRICAL



MAX WEIGHT: 500 lbs (227 kg)

CMA504™ Outlet Coupler

STORAGE



MAX WEIGHT: 250 lbs (113 kg)

CMA160™ Installation Job Box

VIBRATION



MAX WEIGHT: 35 lbs (16 kg)

CMA347™ Vibration Isolator

STEP 4
EXTENSION COLUMN

See Step 2 above

STEP 5
MOUNTING SOLUTION

PROJECTOR RPA™ ELITE



MAX WEIGHT: 50 lbs (23 kg)

RPMxxx™ Projector Mount
RPMU™ Universal Projector Mount

PROJECTOR RPA™ SERIES



MAX WEIGHT: 50 lbs (23 kg)

RPAxxx™ Projector Mount
RPAU™ Universal Projector Mount

FLAT PANEL



PCSxxx/U™ X-Large Flat Panel (42-71")
MCSxxx/U™ Large Flat Panel (26-50")

STEP 6
SECURITY ACCESSORIES

PROJECTOR



PG2™ Small Projector Guard
PG1™ Large Projector Guard

PROJECTOR



PL2™ A/B/C RPA Mini Projector Lock
PL1™ A/B/C RPA Projector Lock

ACCESSORIES

CABLE



LC1™ Cable Lock

SCREW CAP



SSC1™ Screw Cover Kit

Free Manuals Download Website

<http://myh66.com>

<http://usermanuals.us>

<http://www.somanuals.com>

<http://www.4manuals.cc>

<http://www.manual-lib.com>

<http://www.404manual.com>

<http://www.luxmanual.com>

<http://aubethermostatmanual.com>

Golf course search by state

<http://golfingnear.com>

Email search by domain

<http://emailbydomain.com>

Auto manuals search

<http://auto.somanuals.com>

TV manuals search

<http://tv.somanuals.com>