

## Remote Access Server

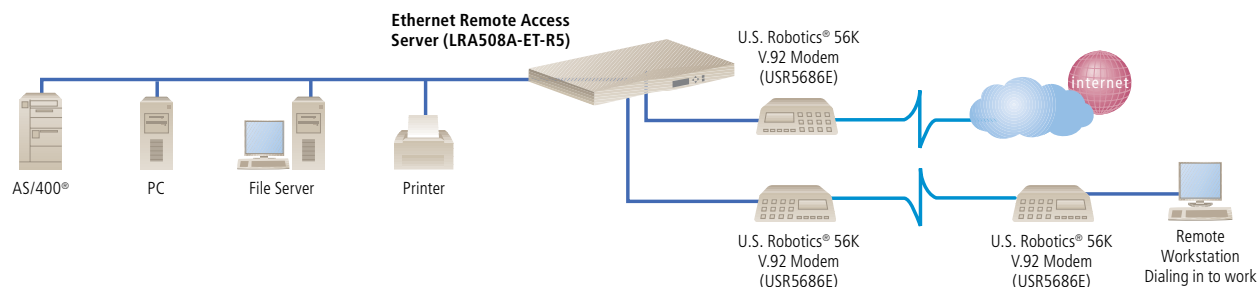
Dial up your LAN  
from a remote location  
quickly and easily.



## FEATURES

- » Access resources on today's most popular networks, including NetWare 3.x and 4.x.
- Includes Windows based management software.
- Front-panel display and keypad.
- Supports external ISDN terminal adapters.
- In-band and out-of-band management.
- Multilevel security and packet filtering.
- Multilanguage support.

Telecommute from remote PCs connected to your office from home.



## OVERVIEW

Whether you're on the road making a sales call or working at home, you can dial up the [Remote Access Server](#) and access the office network to print reports and access e-mail while you're away.

Available in three models (2-, 4-, and 8-port) for Ethernet applications, the server features high-speed serial ports that support up to 115-kbps connections. The device connects easily to today's most popular asynchronous modems, 56-kbps modems, and ISDN terminal adapters.

Perfect for departmental or workgroup dial-in access or dial-out modem pooling, the [Remote Access Server](#) is a complete remote access server solution. With it, you get the server hardware device plus management, dial-out, and client software (with unlimited licenses). Remote users use the client software to access a LAN over inexpensive voice-grade telephone circuits and asynchronous modems and perform tasks just as if they were directly attached to it.

Intranet customers, for instance, can be given direct real-time access to online information that you store on an AS/400. And because they use their everyday Web browser for access and all function keys appear within their browser interface, there's no need to train them on any new software. The [Remote Access Server](#) can even be scaled as the number of your dial-in customers increases.

### Extensive system support

For greater flexibility, the [Remote Access Server](#) works with a wide range of hosts—NetWare®, OS/2® LAN Server, Windows for Workgroups, Windows NT®, and UNIX® (see [page 3](#) for the systems supported). In fact, it supports all major desktop operating systems as well as all major LAN operating systems.

With the [Remote Access Server](#), remote PCs act like a local node on your Ethernet network, so they can access all network resources in NetWare, OS/2 LAN Server, Windows NT, Windows for Workgroups, or LAN Manager. The server supports applications that require a fixed MAC address assigned to specific users, such as ClientAccess®, PC Support 400, and PC Support.

The latest version of the [Remote Access Server](#) boasts features that make it even more flexible. In addition to supporting more operating systems, the server enables you to dial up your LAN using IP. The improved models come with protocol enable/disable options as well as IP and IPX™ packet filtering.

### Extensive management

If you're a network manager, you'll be pleased at just how easy it is to set up and manage the [Remote Access Server](#). Intuitive, menu-driven "wizard" screens guide you through the installation process.

Windows based management software that lets you install and manage the server from a PC that's directly or remotely attached to your LAN. You can communicate with the server one of three ways:

- Over the LAN (inband) while using either IP or IPX protocols;
- By using the included direct-connect null-modem cable as a serial link between the management PC and one of the server's built-in serial connectors; or
- By a dial-in, high-speed modem connection over the telephone network.



LRA508A-ET-R5: top: rear view;  
bottom: front view

With the manager software, you can also create and upload configuration files (which, in turn, can be used as a base for any number of servers), download new firmware, and display statistics and event logs. You're also given easy access to self-explanatory configuration and network diagnostic information.

Once installed and configured, the management software automatically locates all [Remote Access Servers](#) and displays them in a Server List window. Simply point and click to access a particular server. Dynamic Host Configuration Protocol (DHCP) enables you to manage IP addresses and other IP-related options from a single location. It's easy to carry out remote or local management functions from anywhere on your network.

You can also manage the server directly from its front-panel LCD and keypad. The display can be viewed in multiple languages, and you use the keypad to choose your type of Ethernet connection.

#### Extensive security

The [Remote Access Server](#) also features built-in, multilevel Windows NT Domain Server Authentication security that protects your network from unauthorized access. In addition to individual user-name and password protection, the server supports fixed dial-back confirmation and major security standards. Along with Windows NT Domain Server, it supports PAP, CHAP, NetWare Bindery, PassGo Defender, and SecurID-ACE/Server. Its packet filtering feature enables the [Remote Access Server](#) to accept or reject incoming data packets according to the filter definitions you set. This can also be done with a RADIUS security server.

#### What's included

- ◆ Remote Access Server
- ◆ AC power cord
- ◆ (2) rackmount ears with (4) screws
- ◆ 6-foot (1.8-m) DB9 female to DB9 female cable
- ◆ (3) CD-ROMs with software for RAS management, for installing on remote client PCs, and for setting up local LAN-attached dial-out workstations
- ◆ Users' manual

## TECH SPECS

**Approvals** — FCC Class A, TUV, UL®, CSA, DOC, CE

**BTU Output** — 400 BTU/hour (maximum)

**Languages Supported** — English, French, Italian, German, Spanish, Japanese

**Management** — From remote or local PCs; IP address management through

DHCP server, IP address pool, dial-in client, user record, or port record

**Memory** — 32-bit RISC processor; 1 MB flash ROM; 2 MB RAM

**Protocols** — ARAP 1 or ARAP 2, PPP, IPX, TCP/IP, NetBEUI, LLC (802.2),

DHCP BOOTP, SNMP

**Operating Systems Supported** —

Management software: Windows® 95/98/Me, Windows 2000,

Windows NT;

Client software: Windows 9.x, Windows NT, Windows 2000, Linux®

**LAN Environments** — Novell® NetWare 3.x and 4.x, IBM® OS/2 LAN Server, Windows NT Advanced Server, Windows for Workgroups, Microsoft® LAN Manager, UNIX, IBM hosts

**Network Driver Support** — ODI™, NDIS 2.0

**Remote PC Requirements** — IBM PC DOS 5.0 or higher, Windows 3.1, Windows for Workgroups; IBM compatible 80386 or better; Industry-standard async modems (minimum 14.4 kbps recommended) or ISDN terminal adapters; 16550 UART recommended

**Security** — Windows NT Domain Server Authentication; PAP, CHAP; Callback (Windows 2000, Windows NT, Windows 95/98/Me); TCP/IP or IPX packet filtering; protocol enable/disable; RADIUS; internal user lists; NetWare Bindery support; PassGo Defender (Axent DSS); SecurID-ACE/Server; password aging function

**Interface** — LAN: 10BASE-T (RJ-45); 10BASE5 (AUI);

WAN: Async EIA/TIA-232-E serial ports (up to 115 kbps per port)

**Indicators** — LEDs: Power, System Operational, LAN Connect, 2-line x 16-character LCD panel

**Operating Temperature Tolerance** — 32 to 104°F (0 to 40°C)

**Power** — 90–230 VAC, 50–60 Hz (autosensing), 40 watts

**Size** — LRA502A-ET-R5: 1.9"H x 8.5"W x 8.8"D (4.8 x 21.6 x 22.4 cm);

All others: 1.8"H x 17.1"W x 9.7"D (4.6 x 43.4 x 24.6 cm)

**Weight** — LRA502A-ET-R5: 4.9 lb. (2.2 kg); All others: 9.7 lb. (4.4 kg)

#### Item

#### Code

Remote Access Server, Ethernet

2-Port

**LRA502A-ET-R5**

4-Port

**LRA504A-ET-R5**

8-Port

**LRA508A-ET-R5**

## Free Manuals Download Website

<http://myh66.com>

<http://usermanuals.us>

<http://www.somanuals.com>

<http://www.4manuals.cc>

<http://www.manual-lib.com>

<http://www.404manual.com>

<http://www.luxmanual.com>

<http://aubethermostatmanual.com>

Golf course search by state

<http://golfingnear.com>

Email search by domain

<http://emailbydomain.com>

Auto manuals search

<http://auto.somanuals.com>

TV manuals search

<http://tv.somanuals.com>