

Active Star Hub

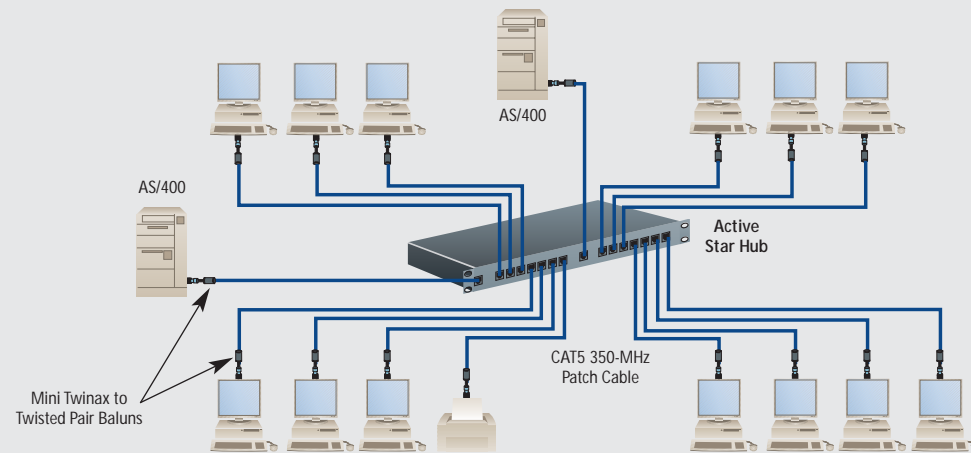


**Run flexible UTP cable instead of twinaxial
in your AS/400 5250 PC emulation.**

FEATURES

- Proven interoperability with 5250 compatibles.
- Standards-based 5250 "star" hub distribution allows greater flexibility for adds, moves, and changes.
- Meets or exceeds EIA/TIA wiring recommendations.
- Advanced noise filtering and signal conditioning.
- Guaranteed firmware upgrade path to the new IBM 5250 Express protocol.

Each device in the diagram below is on a dedicated cable offering complete isolation from other devices. A single device problem cannot affect other users.



OVERVIEW

The IBM® 5250 Express protocol, capable of TCP/IP support, is quickly becoming the "de facto" standard for AS/400® PC emulation. With the Active Star Hub from Black Box, you're guaranteed an upgrade path (via firmware) to the new protocol for far less cost than completely replacing the hub.

The Hub is a state-of-the-art dual active star that has two host port connections and 14 device port connections. It was designed with protocol-transparent criteria and is available with either RJ-11 or RJ-45 connectors. This standards-based, flexible UTP star solution is a low-cost alternative to expensive and rigid twinaxial daisychain cabling. Each device port is isolated, assuring that problems won't be transmitted throughout the entire network. Digital Phase Lock Loop and signal conditioning, noise suppression, and proven interoperability assure reliable and transparent connections with IBM AS/400, 3X and compatible terminals, printers, emulation cards, and remote controllers.

Other Hub features include:

- The Hub is polarity insensitive as long as host and device polarities are the same.
- Advanced noise filtering and signal conditioning means that the Hub will work with lesser-grade cabling systems.

WHAT'S INCLUDED

- ◆ Active Star Hub RJ-11 (IC207A) or Active Star Hub RJ-45 (IC208A)
- ◆ 100-240 VAC input external power supply (attached to Hub)
- ◆ Users' manual

TECH SPECS

Number of Host Ports — 2
Number of Device Ports — 14
Data Rate — 1 Mbps
Protocol — IBM 5250
Indicators — (17) LEDs: (1) Power, (2) Host Port Activity, (14) Device Port Activity
Connectors — IC207A: (16) RJ-11; IC208A: (16) RJ-45
Active Pair — Configurable
Maximum Distance — Controller to Hub: Up to 2000 ft. (609.6 m); Hub to Device: Up to 2200 ft. (670.6 m)
Temperature Tolerance — Operating: 32 to 104°F (0 to 40°C); Storage: 32 to 185°F (0 to 85°C)
Humidity — 95% noncondensing
Power — 100 to 240 VAC, +5 VDC external power supply
Size — 1.75"H (1U) x 19"W x 6"D (4.4 x 48.3 x 15.2 cm)
Weight — 6.3 lb. (2.9 kg)

| Item | Code |
|-----------------|--------|
| Active Star Hub | |
| RJ-11 | IC207A |
| RJ-45 | IC208A |

Free Manuals Download Website

<http://myh66.com>

<http://usermanuals.us>

<http://www.somanuals.com>

<http://www.4manuals.cc>

<http://www.manual-lib.com>

<http://www.404manual.com>

<http://www.luxmanual.com>

<http://aubethermostatmanual.com>

Golf course search by state

<http://golfingnear.com>

Email search by domain

<http://emailbydomain.com>

Auto manuals search

<http://auto.somanuals.com>

TV manuals search

<http://tv.somanuals.com>