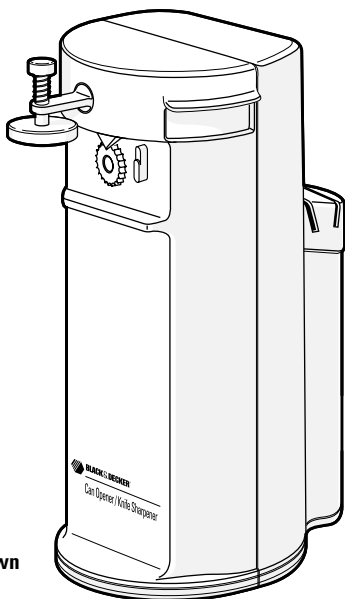




BLACK & DECKER®

SAVE THIS USE AND CARE BOOK

Countertop Can Opener



EC43 Shown



1-800-231-9786

QUESTIONS? Please call us TOLL FREE!

MODELS EC42, EC42C, EC43, EC43B

IMPORTANT SAFEGUARDS

When using electrical appliances, basic safety precautions should always be followed, including the following:

- Please read all instructions.
- To protect against risk of electrical shock, do not put can opener, cord, or plug in water or other liquid.
- Close supervision is necessary when any appliance is used by or near children.
- Turn unit off and unplug from outlet when not in use, before putting on or taking off parts, and before cleaning.
- Avoid contacting moving parts.
- Do not operate any appliance with a damaged cord or plug or after the appliance malfunctions or is dropped or damaged in any manner. Return the appliance to an authorized service facility for examination, repair, or electrical or mechanical adjustment.
- Keep the cord away from the Knife Sharpener (Models EC43 and EC43B only) and the path of the knife being sharpened to prevent fire or shock hazard.
- The use of attachments not recommended or sold by the appliance manufacturer may cause fire, electric shock, or injury.
- Do not use outdoors.
- Do not let cord hang over edge of table or counter or touch hot surfaces.
- Do not open pressurized (aerosol type) cans.
- Do not open cans of flammable liquids such as lighter fluids.
- Do not operate this appliance in the presence of explosive and/or flammable fumes.
- This appliance is intended for household use only and not for commercial or industrial use.

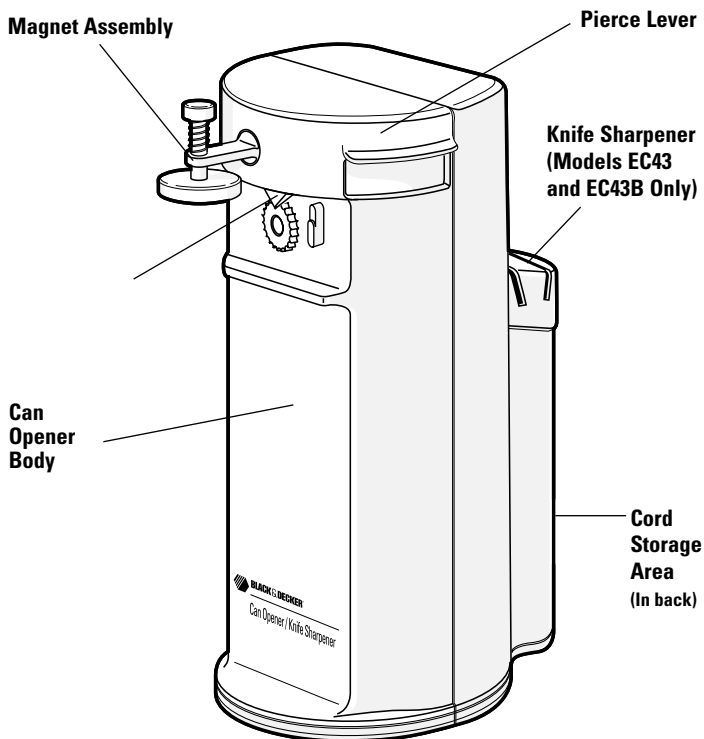
SAVE THESE INSTRUCTIONS

Download from www.Somanuals.com. All Manuals Search And Download.

POLARIZED PLUG

This appliance has a polarized plug—one blade is wider than the other. As a safety feature, this plug will fit into a polarized outlet only one way. If the plug does not fit fully into the outlet, reverse the plug.

If it still does not fit, contact a qualified electrician. Do not attempt to defeat this safety feature by modifying the plug in any way.



How To Use

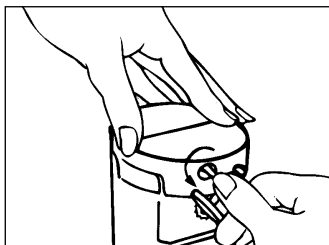


Figure A



Figure B

1. First, install the Magnet. Line up the vertical tab on the Magnet assembly with the vertical hole on the Pierce Lever, then push into the Pierce Lever, and turn until it locks into position. (Figure A)

2. Plug the cord into a standard, 120-volt electrical outlet.

3. Lift up the right side of the Pierce Lever. Tip the can on an angle so that the rim of the can is under the support post. Lower the Pierce Lever, making sure the Cutter Blade is inside the rim of the can.

(Figure B)

4. Press the Pierce Lever down completely. The can will automatically be pierced and the cutting action will begin. Because of the hands-free feature, it is not necessary to hold the Pierce Lever down or to hold onto the can during cutting. Keep in mind, however, that it may be necessary to hold or steady the Can Opener Body when cutting tall or heavy cans.

5. The Can Opener will automatically stop when the can is open.

6. If the Can Opener fails to cut the can lid completely, hold the Pierce Lever down until the can is open.

7. You may stop the cutting action any time by lifting the Pierce Lever.

8. To remove the can, hold it with one hand and raise the Pierce Lever with the other hand. Discard the cut lid.

CAN OPENING TIPS

- This Can Opener should not be used to open cans that are designed to be opened by another method, such as a pull tab, ring opener, pull strip, peel-off foil seal, or rolling key (i.e. *Spam[®], **Crisco[®], sardines, etc.). This Can Opener will not open rimless cans.
- If there is a bump or dent in the rim of the can, open the other end or start the cutting action just beyond the dent. Cans with heavy seams, uneven rims or odd shapes may cause the Can Opener to stall. If this occurs, turn the can slightly by hand to aid the cutting action.
- Frozen juices or foods in cardboard cans should be opened as soon as they are removed from the freezer. Aluminum lids will not stick to the Magnet. To prevent these lids from falling into the can, stop the cutting action before the can is completely opened.

*Spam[®] is a registered trademark of Geo. A. Hormel Co.

**Crisco[®] is a registered trademark of the Procter & Gamble Co.

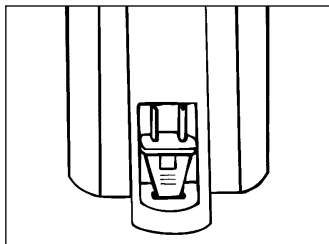


Figure C

CORD STORAGE

There is a handy cord storage area in the back of the Can Opener. Carefully push the cord up into the storage area. Then nest the plug into the cut-out area with the prongs facing upward. (Figure C)

USING THE KNIFE SHARPENER (Models EC43 and EC43B only)

1. Turn the Can Opener sideways. The Slots in the Knife Sharpener are slanted at the correct angle for best sharpening results.
2. Press and hold down the Pierce Lever before inserting a knife blade into either Slot. This will start the Grinding Wheel for sharpening. Continue to hold the Pierce Lever

down while the knife is being sharpened. This will lessen any movement across the countertop during knife sharpening.

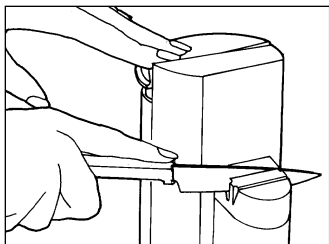


Figure D

3. Lower the end of the knife blade which is closest to the handle into either the right or left Slot of the Sharpener until it lightly touches the Grinding Wheel. (Figure D) Pull the knife blade through the Slot, bringing it toward you slowly. (Allow approximately 3-4 seconds per pass for an 8" blade.)

4. For best results, sharpen the entire blade length in one continuous stroke. Repeat in the opposite Slot to sharpen the other side of the blade. Repeat 5 or 6 times on each side.* To get the sharpest edge possible, hone the knife blade by quickly pulling (1 second per pass) it through each side twice.
5. Be sure to wash and dry knives after sharpening.

* For most knives, 5 or 6 passes per side will be adequate. However, those knives that are made out of very hard steel or that are very dull, may require more than 6 passes to thoroughly sharpen them. If a knife is not very dull, you may only need to make 2 or 3 passes per side.

KNIFE SHARPENING TIPS

(Models EC43 and EC43B only)

1. Clean and dry knives before sharpening. Wet or greasy blades may coat the Grinding Wheel and prevent sharpening.
2. Do not attempt to sharpen serrated blades, as this will smooth their edges. Do not attempt to sharpen scissors.
3. If the knife has a curved tip, raise the knife handle slightly at the end of each sharpening.
4. Do not force the knife blade against the Grinding Wheel, as this may cause uneven sharpening.
5. Do not leave the blade in one spot.

6. The Grinding Wheel is specially designed to prevent “burning” of the knife blade. If the Wheel stalls or stops, the blade is being pressed too hard against the Wheel.

7. Both the Can Opener and the Knife Sharpener are intended for household use only. Do not use the Sharpener for more than 5 minutes at one time. Allow it to cool at least 15 minutes after sharpening knives before using again. This will prevent motor burnout due to overheating.

Care and Cleaning

Other than the cleaning described in this Use and Care book, no other maintenance or servicing of this appliance is required. Repairs, if necessary, must be performed by a Black & Decker (U.S.) Inc., Household Appliance Company-Owned or Authorized Service Center.

CLEANING YOUR CAN OPENER

1. Before cleaning any part of the Can Opener, unplug the cord from the electrical outlet. To remove the Magnet Assembly for cleaning, turn it half way and pull out. Wipe clean with a damp cloth or sponge.

2. The Can Opener has a removable Pierce Lever Assembly for easy cleaning and it should be cleaned frequently. To remove the Assembly for cleaning, slide the Pierce Lever to the right and pull forward. (Figure E)

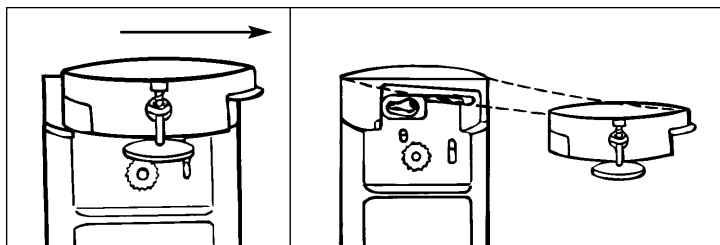


Figure E

The Assembly can be washed by hand in hot, sudsy water, rinsed and dried thoroughly. After each cleaning, add a few drops of cooking or mineral oil to the Cutter Blade.

3. Before replacing the Pierce Lever Assembly, wipe the Can Opener body, and area around the drive wheel with a slightly damp cloth. A mild cleaner can be used to remove stubborn spots. Be sure to dry the unit thoroughly before next use.

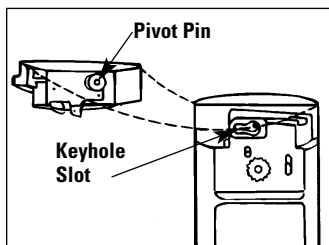


Figure F

4. To replace the Pierce Lever Assembly, insert the Pivot Pin on the back of the Lever into the keyhole shaped opening on the Can Opener Housing. Then slide the Pierce Lever Assembly to the left until the pin is securely in place. (Figure F)

5. Knife Sharpening slots (models EC43 and EC43B) and surrounding area should be wiped with a damp cloth after each use.

Need Help?

SERVICE OR REPAIR

Service, if necessary, must be performed by a Black & Decker (U.S.) Inc., Household Appliance Company-Owned or Authorized Service Center. The Service Center nearest you can be found in the yellow pages of your phone book under "Appliances-Small-Repairing".

For your convenience, a complete listing of Company-Owned Service Centers can be found on pages 9-11.

If mailing or shipping your Can Opener, pack it carefully in a sturdy carton with enough packing material to prevent damage. Include a note describing the problem to our Service

Center and be sure to give your return address. We also suggest that you insure the package for your protection.

Consumer replaceable parts and accessories are also available at Black & Decker (U.S.) Inc., Household Appliance Company-Owned or Authorized Service Centers.

BLACK AND DECKER COMPANY-OWNED SERVICE CENTERS

ALABAMA

BIRMINGHAM — 2412 Green Springs, Hwy., 35209
205-942-0538

MOBILE — 3831 Airport Blvd., 36608 205-343-6624

ALASKA

ANCHORAGE — 910 West International Airport Rd.,
99518 907-563-4664

ARIZONA

MESA — 535 South Dobson Rd., Suite 7, 85202

602-461-1074

PHOENIX — 4501 N. 7th Ave., 85013 602-279-6414

TUCSON — 4845 E. Speedway Blvd., 85712

602-323-3388

ARKANSAS

LITTLE ROCK — 519 W. Seventh St., 72201

501-372-3040

CALIFORNIA

ANAHEIM — 540 South State College Blvd., 92806

714-772-4050

CHULA VISTA — 309 Broadway, 91911 619-420-6350

CONCORD — 1500 Monument Blvd., #C2, 94520

510-682-4880

FRESNO — 5412 North Blackstone Ave., 93710

209-435-0810

LONG BEACH — 2011 South St., 90805 310-422-5825

LOS ANGELES — 4820 South Eastern Ave., Suite "L"

90040 213-720-1834

RIVERSIDE — 6215 Magnolia Ave., Suite B, 92506

714-787-9700

SACRAMENTO — 2033 Fulton Ave., 95825 916-972-9090

SAN DIEGO — 9270 Clairmont Mesa Blvd., 92123

619-279-2011

SAN JOSE — 1185 South Bascom Ave., 95128

408-293-7350

SAN LEANDRO — 15206 East 14th St., 94578

510-276-1610

VAN NUYS — 14920 Victory Blvd., 91411 818-787-5531

COLORADO

DENVER — 1171 South Federal Blvd., Box 19220, 80219

303-922-8325

CONNECTICUT

HARTFORD — 662 Silas Deane Hwy., 06109

203-563-5800

ORANGE — 481 Boston Post Rd., 06477 203-795-3583

DISTRICT OF COLUMBIA

COLMAR MANOR, MD — 4153 Bladensburg Rd., 20710

301-779-3808

FALLS CHURCH, VA — 344 W. Broad St., 22046

703-533-7313

FLORIDA

FT. LAUDERDALE — 799 East Oakland Pk. Blvd., 33334

305-566-5102

FT. MYERS — 5224 Bank St., 33907 813-278-1188

JACKSONVILLE — 920 Cassat Ave., 32205

904-781-2253

MIAMI — 13345 North West Seventh Ave., 33168

305-681-6658

MIAMI — 12233 South Dixie Hwy., 33156 305-232-9497

ORLANDO — 3807 East Colonial Dr., 32803

407-894-7011

ST. PETERSBURG — 5635 49th St. North, 33709
813-525-0273
TAMPA — 3432 West Kennedy Blvd., 33609
813-872-8317
WEST PALM BEACH — 310 South Military Trail, 33415
407-689-3247

GEORGIA

ATLANTA (South) — 5330 Old National Hwy., 30349
404-762-8844
SMYRNA — 2550 Cobb Parkway South, 30080
404-956-0869
STONE MOUNTAIN — 5723 Memorial Dr., 30083
404-292-4714

HAWAII

HONOLULU — Unit No. 106, Sand Island Access Rd.,
96819 808-847-7447

ILLINOIS

CHICAGO (Lincolnwood) — 6710 North Crawford Ave.,
60646 708-673-0923
DES PLAINES — 1277 South Elmhurst Rd., 60018
708-364-5220
LISLE — 2950 Ogden Ave., Unit H, 60532 708-717-1075
MOLINE — 4433 23rd Ave., 61265 309-762-3000
OAK LAWN — 6343 W. 95th St., 60453 708-423-7212
WAUKEGAN — 31 S. Greenbay Rd., 60085
703-249-4390

INDIANA

EVANSVILLE — 307 First Ave., Crescent Ctr., 47710
812-425-4269
HAMMOND — 7103 Kennedy Ave., 46323 219-845-5100
INDIANAPOLIS (Speedway) — 5999 Crawfordsville Rd.,
46224 317-243-8308

IOWA

DES MOINES — 3427 Merle Hay Rd., 50310
515-270-1340

KANSAS

WICHITA — 155 South West St., 67213 316-943-1271

KENTUCKY

LOUISVILLE — 5211 Preston Hwy., 40213 502-968-7100

LOUISIANA

BATON ROUGE — 11859 Florida Blvd., 70815
504-272-8111
HARVEY — 2500 Lapalco Blvd., 70058 504-366-8676
METAIRIE (New Orleans) — 3504 North Causeway
Blvd., 70002 504-837-2550
SHREVEPORT — 7710-7714 Jewella Rd., 71108
318-688-1553

MARYLAND

BALTIMORE — 4712 Erdman Ave., 21205 410-485-5550

BALTIMORE — 29-31 Cranbrook Rd., Cockeysville,
21030 410-666-5966
COLMAR MANOR (Wash. D.C.) — 4153 Bladensburg
Rd., 20722, 301-779-3808
PASADENA — 8220 Ritchie Hwy., 21122 410-647-8456

MASSACHUSETTS

BRIGHTON (Boston) — 12 Market St., 02135
617-782-6264
SEEKONK — 120 Highland Ave., 02771 508-336-6510

MICHIGAN

GRAND RAPIDS — 3040 28th St., SE, 49512
616-949-8331
LANSING — 3205 W. Saginaw Hwy., 48917
517-323-4181
WARREN — 27035 Van Dyke Blvd., 48093 313-756-6711
WESTLAND — 8067 N. Wayne Rd., 48185 313-427-1520

MINNESOTA

BLOOMINGTON — 9517 Lyndale Ave., South, 55420
612-884-9191

MISSOURI

KANSAS CITY — 4324 Main St., 64111 816-531-0629
ST. ANN — 3637 North Lindbergh Blvd., 63074
314-739-4661
ST. LOUIS — 12852 Manchester Rd., 63131
314-821-8740

NEBRASKA

OMAHA — 4225 South 84th St., 68127 402-592-5666

NEVADA

LAS VEGAS — 3411 East Charleston Blvd., 89104
702-641-6555

NEW JERSEY

CHERRY HILL — 1444 East Marlton Pike (Rt. 70), 08034
609-429-2822
LITTLE FALLS — 1189 U.S. Hwy. 46, 07424
201-256-9373
SCOTCH PLAINS — 2520 Route #22 East, 07076
908-233-5665

NEW MEXICO

ALBUQUERQUE — 5617 Menaul Blvd., N.E., 87110
505-884-1002

NEW YORK

ALBANY (Latham) — 836 Troy-Schenectady Rd., 12110
518-785-1867
BUFFALO — 881 West Delavan Ave., 14209
716-884-6220
CENTEREACH I.I. — 2061-63 Middle Country Rd., 11720
516-737-4706

NEW YORK (Elmhurst) — 77-20 Queens Blvd., 11373
718-335-1042

NEW YORK (Manhattan) — 50 West 23rd St., 10010
212-929-6450

NEW YORK (Westbury, L.I.) — 1061 Old Country Rd.,
11590 516-997-6140

ROCHESTER — 2969 W. Henrietta Rd., 14623
716-424-1310

SYRACUSE — 3485 Erie Blvd., East, 13214 315-446-3086

NORTH CAROLINA

CHARLOTTE — 3007 East Independence Blvd., 28205
704-374-1779

GREENSBORO — 3716 High Point Rd., 27407
919-852-1300

RALEIGH — 2930 Capital Blvd., 27604 919-878-0357

OHIO

CINCINNATI — 2310 East Sharon Rd., 45241
513-772-3111

COLUMBUS — 3975 East Livingston Ave., 43227
614-237-0461

DAYTON — 2898 South Dixie Drive, 45409 513-298-1951

MAYFIELD HEIGHTS — 5881 Mayfield Rd., 44124
216-449-2770

PARMA HEIGHTS (Cleveland) — 6483 Pearl Rd., 44130
216-842-9100

TOLEDO — 3231 Dorr St., 43607 419-531-8921

OKLAHOMA

OKLAHOMA CITY — 1318 Linwood Blvd., 73106
405-232-7515

TULSA — 3120 S. Sheridan Rd, 74145 918-622-5666

OREGON

PORTLAND — 1640 NW Johnson St., 97209
503-228-8631

PENNSYLVANIA

ALLENTOWN (Whitehall) — 2242 MacArthur Rd., 18052
215-435-9544

EVANS CITY — Cranberry Town Center Plaza, 20808 Rt.
19 N., 16033 412-779-9600

HARRISBURG — 6080 Allentown Blvd., 17112
717-545-0651

LANCASTER — 118 Keller Ave., 17601 717-393-5251

PHILADELPHIA — 9977-81 Bustleton Ave., 19115
215-464-7771

PHILADELPHIA — 333 North 20th St., 19103
215-564-5520

PITTSBURGH — 5437 Baum Blvd., 15232 412-362-2700

WILKES-BARRE — 759 Kidder St., 18702 717-824-5704

PUERTO RICO

GUAYNABO — "C" Street # 14, Rexco Industrial Park,
00922-1924 809-783-3535

RHODE ISLAND

SEEKONK, MA — 120 Highland Ave., 02771
508-336-6510

SOUTH CAROLINA

GREENVILLE — 1557 Laurens Rd., 29607 803-232-3038

TENNESSEE

CHATTANOOGA — Perimeter Place Shopping Ctr., Sp. E,
6231 Perimeter Dr., 37421 615-894-5957

KNOXVILLE — 4118 North Broadway, 37917

615-688-0921

MEMPHIS — 1085 East Brooks Rd., 38116 901-332-3444

NASHVILLE — 4811 Nolensville Rd., 37211 615-833-8277

TEXAS

AMARILLO — 3008 West 6th Ave., 79106 806-373-1531

AUSTIN — 6549 Burnet Rd., 78757 512-459-1133

DALLAS — 2257 Royal Lane, 75229 214-620-8655

EL PASO — 6822 Gateway East, 79915 915-778-9769

FORT WORTH — 721 North Beach St., 76111
817-831-3828

GARLAND — 78 West Centerville Rd., 75043
214-686-9302

HOUSTON — 536 East Tidwell Rd., 77022 713-692-7111

SAN ANTONIO — 500 Culebra Ave., 78201 210-732-1221

WEBSTER — 100 East Nasa Road One, Ste. 75, 77598
713-338-4556

UTAH

SALT LAKE CITY — 1541 S. Third West St., 84115
801-486-5828

VIRGINIA

FALLS CHURCH — 344 W. Broad St., 22046 703-533-7313

HAMPTON — 3416 W. Mercury Blvd., 23666
804-826-9382

NORFOLK — 7631 Sewells Point Rd., 23513
804-480-3333

RICHMOND — 1424 Chamberlayne Ave., 23222
804-649-9245

WASHINGTON

SEATTLE — 421 S. Michigan, 98108 206-763-2010

SPOKANE — N. 7011 Division St., 99208 509-467-8190

TACOMA — 2602 S. 38th St., 98409 206-473-6040

WEST VIRGINIA

CHARLESTON — 1638 Sixth Ave., 25312 304-343-0289

WISCONSIN

MILWAUKEE (Wauwatosa) — 10424 W. Bluemound Rd.,
53226, 414-453-4240

REV: 9/94

FULL TWO-YEAR WARRANTY

Black & Decker (U.S.) Inc. warrants this product against any defects that are due to faulty material or workmanship for a two-year period after the original date of consumer purchase or receipt as a gift. This warranty does not include damage to the product resulting from accident or misuse.

If the product should become defective within the warranty period, we will repair it or elect to replace it free of charge. We will return your product, transportation charges prepaid, provided it is delivered prepaid to any Black & Decker (U.S.) Inc., Household Appliance Company-Owned or Authorized Service Center. This warranty gives you specific legal rights, and you may also have other rights which vary from state to state.

Answers to any questions regarding warranty or service locations may be obtained by calling toll-free 1-800-231-9786 or by writing:

Consumer Assistance
and Information
Black & Decker (U.S.) Inc.
626 Hanover Pike
Hampstead, MD 21074-0618



 **BLACK & DECKER®**

1.5 Amps, 120V, 60Hz, AC Only
Listed by Underwriters Laboratories, Inc.
Copyright © 1986 - 1995 Black & Decker
Pub. No. 168633-03-RV04
Printed in Hong Kong

Free Manuals Download Website

<http://myh66.com>

<http://usermanuals.us>

<http://www.somanuals.com>

<http://www.4manuals.cc>

<http://www.manual-lib.com>

<http://www.404manual.com>

<http://www.luxmanual.com>

<http://aubethermostatmanual.com>

Golf course search by state

<http://golfingnear.com>

Email search by domain

<http://emailbydomain.com>

Auto manuals search

<http://auto.somanuals.com>

TV manuals search

<http://tv.somanuals.com>