

Product Information

Sheet capacity: **6 20 lb. pages in widths up to 8.5"**
One folded sheet of paper equates to 2 sheets of paper.

Credit card capacity: **1 at a time**
 Paper shred size: **.157" x .748"**
 Voltage: **120**

INDICATOR LIGHTS

To provide ease-of-use, your Black & Decker paper shredder has indicator lights as visual cues to communicate any problems.



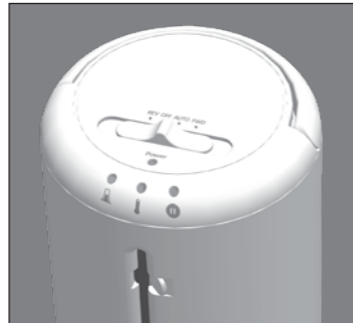
Bin Full - This means the shredder bin needs to be emptied. Unplug shredder and empty the shredder bin.



Overheat - This means the shredder needs to cool down. Simply turn off the shredder and let cool for approximately 30 minutes.



Jam Proof - If this light is on then you must reduce the amount of material that you are trying to shred in a single pass.



Never shred plastic (except credit cards), any hard materials, continuous forms, newsprint, or anything with adhesives including labels and envelopes. While this shredder will shred staples, it is recommended that you remove them whenever possible to extend the life of your shredder.

Only shred credit cards by feeding them vertically within the designated area. Never feed more than one credit card at a time.



Limited Lifetime Warranty

WHO IS COVERED:

This warranty covers only the original retail purchaser of the Black & Decker Paper Shredder who submits the warranty registration card within 90 days after purchase. This warranty is not transferable.

HOW LONG DOES COVERAGE LAST:

For cutter blades: Lifetime – as long as you own the product
 For all other parts: One year from the date of original purchase

WHAT IS COVERED:

Any defect in material or workmanship of your Black & Decker Paper Shredder

WHAT IS NOT COVERED:

This warranty does not cover damage due to misuse, abuse or accident such as:

- failure to maintain the product as provided in the Black & Decker Paper Shredder Instruction Manual
- commercial use
- improper or unauthorized repair or service
- fire, flood, "acts of God" or other contingencies beyond the control of HoMedics.

WHAT HOMEDICS WILL DO:

Repair, and if not possible, replace your Black & Decker Paper Shredder with a new or reconditioned model of the same type. If the model has been revised, you will receive the most current model.

HOW TO GET SERVICE:

Visit our website at www.blackanddeckershredders.com or call the toll free customer service line at **1-800-297-5028**.

THE DURATION OF ANY IMPLIED WARRANTY OF MERCHANTABILITY IS LIMITED TO ONE YEAR. HOMEDICS SHALL NOT BE RESPONSIBLE FOR INCIDENTAL OR CONSEQUENTIAL DAMAGES ARISING OUT OF THE PURCHASE OR USE OF THE PAPER SHREDDER. Some states do not allow limitations on how long an implied warranty lasts, or the exclusion or limitation of incidental or consequential damages, so the above limitations may not apply to you. This warranty gives you specific legal rights, and you may also have other rights which vary from state to state.

Distributed by
HOMEDICS®
 HoMedics, Inc.
 3000 Pontiac Trail, Commerce Twp, MI 48390

Black & Decker and the Black & Decker logo are trademarks of The Black & Decker Corporation and are used under license. All rights reserved.

Download from www.Somanuals.com. All Manuals Search And Download.

PROTECT YOUR IDENTITY WITH THE BRAND YOU TRUST™



SKU #BD-VS600

Please read these instructions before use

Thank you for buying a Black & Decker paper shredder. **Black & Decker paper shredders** have become the benchmark for innovation, performance and quality to protect against identity theft. We have taken great care in designing and engineering a product to meet and exceed your needs.

To ensure years of safe, efficient performance, please read these important product usage and safety instructions.

Customer Service

Black & Decker has a toll-free help line for customers living in the United States and Canada if you have any questions regarding our product. Our customer service phone number is **1-800-297-5028** or visit our website at www.blackanddeckershredders.com.

The Following Are Important Safety Instructions. Read All Instructions Before Using.

⚠ WARNING KEEP OUT OF REACH OF CHILDREN

- WARNING:** Hazardous moving parts. Keep fingers and other body parts away.
 - WARNING:** To reduce risk of fire, electrical shock or injury:
 - NEVER** allow children to operate a paper shredder, even under adult supervision. A paper shredder is **NOT** a toy.
 - DO NOT** use flammable synthetic oil, petroleum-based products or aerosols of any kind on or near product at any time.
 - DO NOT** operate any electrical product with a damaged cord.
 - AVOID** getting jewelry, hair or loose clothing too close to feed slot as serious injury can occur.
 - DO NOT** handle plug or product with wet hands.
 - ALWAYS** keep children and pets away from the shredder.
 - ALWAYS** unplug shredder when not in use.
 - DO NOT** attempt to feed more sheets of paper than specified on the feeder.
 - DO NOT** attempt to shred materials other than paper or credit cards.
 - ALWAYS** empty the wastebasket prior to becoming full.
 - DO NOT** place shredder near heat or water source.
 - DO NOT** open shredder head to attempt repair: It could expose you to electric shock and will void your warranty.
- The socket-outlet shall be installed near the equipment and shall be easily accessible.

WARNING ICONS: The icons on top of the shredder warn the user of the potential dangers if the shredder is used improperly.



Setup

- Mount the shredder securely to the base. This shredder features a safety power cut off and will not operate if the shredder is not properly attached.
- A socket-outlet should be near the equipment and be easily accessible. Connect the power cord to any standard 120 volt AC outlet.

Operation

HOW TO USE YOUR SHREDDER

1. Place shredder head onto bin. Button on side will pop into place securing the head onto the bin (fig 2).
2. Slide safety shield to the open position (fig 3).
3. To empty bin, depress release button and remove head. Shreds should be emptied into separate waste bin. **ALWAYS unplug before emptying bin.**

To begin shredding, locate the power switch (2) on the unit and select the "Auto" mode. The green LED light indicates the shredder is "On" and ready to use. Slide the safety shield (4) to the right until it clicks into place and exposes the paper feed slot.

When the "Bin Full" light (See "Product Information" section) turns on, the bin (7) is full and the shredder will not operate. Press the release button (5) on the right hand side of the shredder, and lift the shredder off of the bin. Empty the bin before reattaching the shredder.

This shredder has a 4 position power switch:

- REV** Reverse – In the unlikely event of a paper jam, the reverse setting can be used to help clear the cutters of paper that has not passed through. Never attempt to clear a jam by using the reverse function until after you have emptied the bin.
- OFF** Off— This setting turns off all features of the shredder. For safety reasons, we recommend that you leave the shredder in the "Off" position whenever the shredder is unattended or not in use.
- AUTO** Auto—This setting allows the shredder to be automatically started by inserting paper into the shred opening. Always feed the paper in as straight as possible. When the paper has passed through, the shredder will automatically stop.
- FWD** Forward—This setting allows the shredder to run continuously.

figure 1

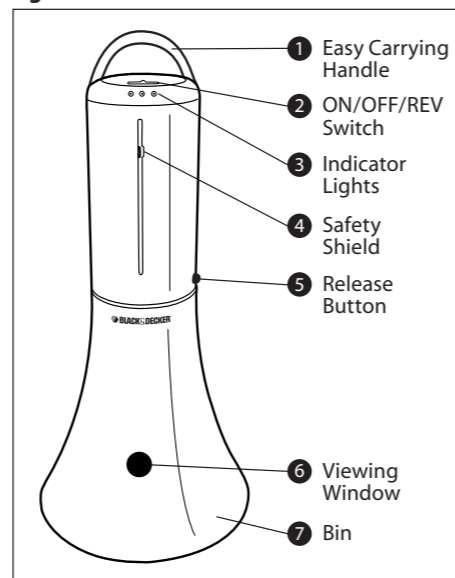


figure 2



figure 3



Maintenance

Regular emptying of the bin is important to ensure the smooth operation of the cutting cylinders. The shredder will not operate when the bin is full. Regular oiling is also necessary for proper performance. It is recommended to use shredder oil every few weeks. Apply across shredder entry, then run a single sheet through.

CLEANING

Always unplug the shredder before cleaning!

- Only clean the shredder by wiping the unit with a dry soft cloth or towel.
- Do not clean or immerse shredder in water. Getting the unit wet may result in damage or malfunction to the electrical components. If the shredder happens to get wet, be sure to completely dry the unit immediately with a soft cloth or towel.
- Never use anything flammable to clean the shredder. This may result in serious injury or damage to the shredder.

⚠ WARNING

Troubleshooting

If you have a problem with your shredder, check the symptoms and remedies below. If you cannot solve the problem this way, contact Black & Decker paper shredders Customer Service. **Do not open shredder head to attempt repair: It could expose you to electric shock and will void your warranty.**

Symptom	Remedy
Shredder does not start or stops while shredding.	<ul style="list-style-type: none"> - Make sure shredder is plugged in and Power Switch (1) is in the ON (-) position. - Wait 30 minutes for shredder to cool down before trying again. - Make sure that the shredder is properly mounted to the base. The shredder has a safety power cut off if it is not properly mounted to the base.
Paper jam.	<p>In case of a paper jam, which may occur if the sheet capacity is exceeded or if the paper is not put in straight. To clear a jam:</p> <ol style="list-style-type: none"> 1. Move the Function Switch (2) to the REV (II) position. The shredder will reverse to clear the jam. 2. If the shredder jams in reverse, move the Function Switch (2) to the AUTO (I) and allow it to run for about 5 seconds. 3. If the jam still does not clear, unplug shredder and carefully grasp the paper and pull out slowly. 4. Once the jam is cleared, plug in and move the Function Switch to AUTO (I) for continued shredding or OFF (O) if shredding is complete.
Shredder squeaks, grinds or runs below capacity.	<ul style="list-style-type: none"> - Check to see if bin is full. If bin is full, follow instructions under maintenance. - Oil cutting cylinder.
Shredder continues to run for 2 or 4 seconds after shredding has been completed.	<ul style="list-style-type: none"> - No action required. This is a self-cleaning function.

Free Manuals Download Website

<http://myh66.com>

<http://usermanuals.us>

<http://www.somanuals.com>

<http://www.4manuals.cc>

<http://www.manual-lib.com>

<http://www.404manual.com>

<http://www.luxmanual.com>

<http://aubethermostatmanual.com>

Golf course search by state

<http://golfingnear.com>

Email search by domain

<http://emailbydomain.com>

Auto manuals search

<http://auto.somanuals.com>

TV manuals search

<http://tv.somanuals.com>