

MOUNTING

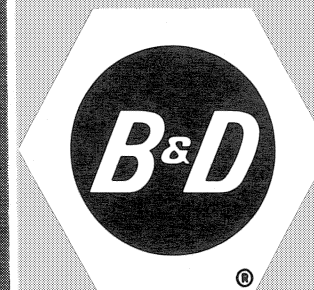
Grinder must be bolted to a bench or B&D pedestal #53536 for optimum use —

EXHAUST PORTS

Unit equipped with ports to facilitate connection to a dust removal system.

EXTRA EQUIPMENT

1. Buffing wheels
2. Wire brushes
3. Eye shields — (requires drilling out hole on top of guard for mounting).
4. Wheel dressers



Black & Decker

POWER TOOLS

FACTORY SALES and SERVICE CENTERS

IMPORTANT!

To assure product SAFETY and RELIABILITY, repairs, maintenance and adjustments should be performed by BLACK & DECKER Service Centers or other qualified service organizations, always using BLACK & DECKER replacement parts.

	Area Code	Telephone No.		Area Code	Telephone No.
ALABAMA: Birmingham 35233, 1717 Third Ave., South.....	205	324-6691	NEW MEXICO: Albuquerque 87110, 4700 Lomas Blvd. N.E.	505	265-6401
ARIZONA: Phoenix 85004, 537 E. McDowell Rd.	602	AL 8-1332	NEW YORK: Buffalo 14209, 881 W. Delaware Ave.	716	TT 4-2220
ARIZONA: Little Rock 72201, 519 West Seventh St.	501	FR 2-3040	New York 10462, 1894 E. Tremont Avenue (Bronx).....	212	SY 2-2700
CALIFORNIA: Anaheim 92802, 1225 So. Euclid Ave.	714	772-4050	New York 10014, 227 Varick St. (Manhattan).....	212	WA 9-6450
Los Angeles 90007, 2432 S. Broadway.....	213	RI 9-0371	New York 11377, 56-15 Queens Blvd. (Woodside).....	212	DE 5-1042
Oakland 94606, 1107 E. 14th St.	415	TE 4-5944	Rochester 14620, 476 Clinton Ave. S.	716	454-3814
Sacramento 95814, 1915 Seventeenth St.	916	444-3188	Syracuse 13224, 2140 Erie Blvd. E.	315	446-3086
San Diego 92105, 3811 El Cajon Blvd.	619	280-3331	NORTH CAROLINA: Charlotte 28206, 1710 N. Graham St.	704	FR 5-3721
Santa Clara 95050, 2291 The Alameda.....	408	241-9162	Fayetteville 28306, P.O. Box 4305, Highway 301, S.	919	425-1181
South San Francisco 94080, 1139 Airport Blvd.	415	871-7278	Greensboro 27403, 1008 W. Lee St.	919	275-0906
Van Nuys 91401, 14920 Victory Blvd.	213	787-5531	OHIO: Cincinnati 45203, 1225 Western Ave.	513	421-2275
COLORADO: Denver 80204, 675 Kalamath St.	303	222-0621	Cleveland 44113, 3901 Detroit Ave.	216	OL 1-4243
CONNECTICUT: Hartford 06114, 131 Meadow St.	203	249-6241	Columbus 43202, 3975 East Livingston Ave.	614	237-0461
FLORIDA: Jacksonville 32208, 5224 Pearl St.	904	356-2951	Dayton 45420, 617 Watervliet St.	513	252-1821
Miami 33168, 13345 N.W. Seventh Ave.	305	681-6658	Solon 44139, 8225 Cochran Rd.	216	CH 5-5330
Orlando 32806, 940 So. Orange Ave.	305	423-1651	Toledo 43606, 2629 W. Central Ave.	419	475-6771
Tampa 33609, 3401 W. Kennedy Blvd.	813	872-8317	OKLAHOMA: Oklahoma City 73106, 1318 Linwood Blvd.	405	CE 2-7515
GEORGIA: Atlanta 30313, 316 Techwood Drive, N.W.	404	JA 4-0431	Tulsa 74145, 3120 South Sheridan Rd.	918	622-5666
HAWAII: Honolulu 96813, 675 Auahi St.	808	536-9374	OREGON: Portland 97209, 1640 N. W. Johnson St.	503	CA 8-8631
ILLINOIS: Chicago 60607, 1100 W. Jackson Blvd.	312	TA 9-3500	PENNSYLVANIA: Harrisburg 17112, 6070 Allentown Blvd.	717	545-0651
Chicago 60646, Lincolnwood, 6710 N. Crawford Ave.	312	OR 3-0923	Lancaster 17604, 715 Fountain Ave.	717	393-5831
Chicago 60643, 10708 S. Western Ave. (Beverly Hills).....	312	BE 3-6832	Philadelphia 19103, 333 No. 20th St.	215	LO 4-5520
Rock Island 61201, 725 30th St.	309	788-1744	Pittsburgh 15232, 5437 Baum Blvd.	412	362-2700
INDIANA: Evansville 47708, 931 Bond St.	812	425-4269	RHODE ISLAND: E. Providence 02914, 2777 Pawtucket Ave.	401	434-1655
Indianapolis 46202, 1125 W. 16th St.	317	632-5569	South Carolina: Greenville 29601, 407 Pendleton St.	803	232-3038
IOWA: Des Moines 50312, 2811 Ingersoll Ave.	515	CH 4-7257	TENNESSEE: Knoxville 37917, 1123 North Central St.	615	546-2481
KANSAS: Wichita 67214, 203 N. Mathewson St.	316	263-6571	Memphis 38116, 986 East Brooks Rd.	901	332-3444
KENTUCKY: Louisville 40209, 4407 Park Blvd.	502	366-1495	Nashville 37203, 601 Eighth Ave., South	615	254-1061
LOUISIANA: New Orleans 70002, 3310 N. Causeway Blvd. (Metairie).....	504	837-2550	TEXAS: Amarillo 79106, 308 West 6th Ave.	806	DR 3-1531
MARYLAND: Baltimore 21211, 203 West 28th St.	301	HO 7-7411	Dallas 75207, 1808 N. Industrial Blvd.	214	RI 1-6401
Baltimore 21205, 4712 Erdman Ave.	301	485-5550	Fort Worth 76103, 1801 Bomar St.	817	338-0175
Bladensburg 20710, 4501 Baltimore Ave.	301	779-3808	Houston 77003, 105 Sampson St.	713	228-7521
Towson 21204, 701 E. Joppa Rd.	301	828-2910	San Antonio 78210, 1111 S. Pensa St.	512	LE 4-4611
MASSACHUSETTS: Boston 02135, 12 Market St. (Brighton).....	617	ST 2-6264	UTAH: Salt Lake City 84115, 1541 S. Second West.....	801	HU 6-7056
MICHIGAN: Detroit 48219, 18133 W. McNichols Rd.	313	534-8880	VIRGINIA: Falls Church 22046, 129 Annandale Rd.	703	533-1147
Detroit 48234, 11360 East Seven Mile Rd. (Mt. Elliott).....	313	527-5010	Norfolk 23517, 337 W. 21st St.	703	627-4521
Grand Rapids 49509, 3662 Clyde Park Ave., S.W.	616	534-7708	Richmond 23222, 1424 Chamberlayne Ave.	703	649-9245
MINNESOTA: Minneapolis 55408, 2815 Nicollet Ave.	612	623-5283	WASHINGTON: Seattle 98109, 701 Third Ave., N.	206	AT 2-6432
MISSOURI: Kansas City 64108, 2705 McGee Trafficway.....	816	HA 1-1493	Spokane 99207, 3550 N. Market St.	509	HU 9-9164
St. Louis 63110, 615 S. Vandeventer Ave.	314	JE 3-2210	WEST VIRGINIA: Charleston 25312, 1638 Sixth Ave.	304	343-0289
NEBRASKA: Omaha 68102, 2218 Leavenworth St.	402	345-2330	WISCONSIN: Milwaukee 53213, 6301 Blue Mound Rd.	414	476-7800
NEW JERSEY: Newark 07104, 868 Broadway.....	201	HU 3-1076			

BLACK & DECKER MFG. CO., Limited, Canada			
BROCKVILLE, ONTARIO	Perth Street	MONTREAL 10, P. Q.	7865 St. Lawrence Blvd.
CALGARY, ALBERTA	1003 11th Avenue, S. W.	OTTAWA, ONTARIO	418 Laurier Avenue, West
DON MILLS (Toronto)	2 Valleybrook Drive	QUEBEC CITY, P. Q.	330 St. Roch Street
EDMONTON, ALBERTA	11440 Ave.—142 Street	REGINA, SASKATCHEWAN	1076 Albert Street
HALIFAX, NOVA SCOTIA	803 McLean Street	SASKATOON, SASK.	Diamond Ind. Center, Quebec & 33rd St.
HAMILTON, ONTARIO	180 Parkdale Ave., N.	VANCOUVER 10, B. C.	24 West 2nd Ave.
LONDON, ONTARIO	631 Commissioners Rd., East	WINNIPEG 10, MANITOBA	934 St. James St.

AUTHORIZED SERVICE STATIONS			
ALABAMA, Montgomery	CONNECTICUT, New Haven	MAINE, Westbrook	OHIO, Youngstown
ALASKA, Anchorage	DELAWARE, Wilmington	MISSISSIPPI, Jackson	PENNSYLVANIA, Allentown
Fairbanks	FLORIDA, Pensacola	NEVADA, Reno, Las Vegas	Erie
ARIZONA, Tucson	IDAHO, Boise, Lewiston	NEW YORK, Schenectady	SOUTH CAROLINA, Charleston
CALIFORNIA, Fresno			SOUTH DAKOTA, Rapid City
Stockton			TEXAS, Corpus Christi
			El Paso
			VIRGINIA, Roanoke
			WASHINGTON, Yakima
			WEST VIRGINIA, Wheeling

Guarantee Black & Decker guarantees, for one year from date of purchase, to correct by repair or parts replacement without charge any defect due to faulty material or workmanship. Simply return the complete unit, transportation prepaid, to any Black & Decker Service Center or Authorized Service Station. Naturally, we assume no responsibility for damage caused by misuse, careless handling or where repairs have been made or attempted by others. No other guarantee, written or verbal, is authorized by us.

OWNER'S MANUAL

This booklet is provided for your convenience in the Use & Care of your new Black & Decker Bench Grinder. These instructions include Safety Precautions, Operation, Preventive Maintenance, Maintenance and other pertinent data to assist you in assuring long life and dependable service from your Bench Grinder.

CAT. NOS. 4330, 4330-01, 4335 — TYPE 1

10" HEAVY-DUTY BENCH GRINDER

Bulletin 2928-1

THE BLACK & DECKER MFG. CO. — TOWSON, MARYLAND 21204, U.S.A.



P.T.I. SAFETY RULES FOR STATIONARY POWER TOOLS

- KNOW YOUR POWER TOOL.** Read the owner's manual carefully. Learn its application and limitation, as well as the specific potential hazards peculiar to this tool.
- KEEP GUARDS IN PLACE** and in working order.
- GROUND ALL TOOLS.** If tool is equipped with three-prong plug, it should be plugged into a three-hole electrical receptacle. If an adapter is used to accommodate a two-prong receptacle, the adapter wire must be attached to a **known ground**. Never remove the third prong.
- REMOVE ADJUSTING KEYS AND WRENCHES.** Form habit of checking to see that keys and adjusting wrenches are removed before turning on tool.
- KEEP WORK AREA CLEAN.** Cluttered areas and benches invite accidents.
- AVOID DANGEROUS ENVIRONMENT.** Don't use power tools in damp or wet locations. Keep your work area well illuminated.
- KEEP CHILDREN AWAY.** All visitors should be kept a safe distance from work area.
- MAKE WORKSHOP KIDPROOF**—with padlocks, master switches, or by removing starter keys.
- DON'T FORCE TOOL.** It will do the job better and be safer at the rate for which it was designed.
- USE RIGHT TOOL.** Don't force tool or attachment to do a job it was not designed for.
- WEAR PROPER APPAREL.** No loose clothing or jewelry to get caught in moving parts.
- USE SAFETY GLASSES.** Also use face or dust mask if cutting operation is dusty.
- SECURE WORK.** Use clamps or a vise to hold work, when practical. It's safer than using your hand, frees both hands to operate tool.
- DON'T OVERREACH.** Keep your proper footing and balance at all times.
- MAINTAIN TOOLS IN TOP CONDITION.** Keep tools sharp and clean for best and safest performance. Follow instructions for lubricating and changing accessories.
- DISCONNECT TOOLS** before servicing and when changing accessories such as blades, bits, cutters.
- USE RECOMMENDED ACCESSORIES.** Consult owner's manual. Use of improper accessories may be hazardous.
- AVOID ACCIDENTAL STARTING.** Make sure switch is off before plugging in cord.

ADDITIONAL GRINDER SAFETY RULES

- Always wear safety glasses or other eye protection when operating this tool, and eye shields, mounted on the wheel guards, are strongly recommended.
- Replace a cracked wheel immediately. Handle grinding wheels carefully to avoid bumping or dropping. DO NOT use a grinding wheel that has been dropped. Before using, inspect each grinding wheel for cracks or flaws and if these are evident, discard the wheel.

GROUNDING

These units are equipped with an outlet box mounted on the back of the unit for permanent wiring, as required by Underwriters Laboratories. Wiring diagrams are pasted to the underside of the base. To insure proper wiring & "grounding" of tool, have connection made by a qualified electrician.

LUBRICATION

This tool is equipped with lubricant sealed ball bearings which require no further lubrication for the life of the bearing.

MOTOR

Four pole capacitor start induction motor. Squirrel cage rotor.

Cat. No.	Phase	HP	Cycles	Rated @ 115 V.	RPM No Load	Voltage, A.C.
4330	1	1	50/60	14.6/13	1500/1800	115 Volts
4330-01	1	1	50/60	14.6/13	1500/1800	220 Volts
4335	3	1	50/60	14.6/13	1500/1800	220/440 Reconnectable

CHANGING WHEELS

Remove 4 screws holding wheel guard cover. Loosen and remove hexagon nut. (Nut on left wheel has left hand threads, nut on right wheel has right hand threads) and clamp washer. Remove wheel. To reassemble, reverse above steps. Do not overtighten nut. Wheel size 10" O.D., 3/4" I.D., 1" Width.

ACCESSORIES

No. 34575 One Shatter-Proof Eye Shield . . . Fastens permanently to Bench Grinder. Adjusts quickly to various positions to suit operator. Not illuminated. (Replacement glass, No. 34576).

No. 19115 Cutter Wheel Dresser . . . Has spare set of cutter wheels. Dresses wheels quickly for fast grinding.

No. 21961 Diamond Dresser . . . Produces an accurate, smooth face for finish grinding.

No. 53536 Pedestal . . . Holds grinder at convenient height. Has detachable water pot. Height: 31 1/2"; Base: 16 square.

Grinding Wheels (10" Diam. x 1" Face x 3/4" Hole):

No. 10274 Specification A24Q6V, Type 1

No. 10275 Specification A46N6V, Type 1

Wire Wheel Brushes (10" Diam. x 1 1/8" Face x 3/4" Hole):

No. 21407 .014 Wire Diam. (30 Gage)

No. 27012 .0118 Wire Diam. (33 Gage)

Cotton Buffing Wheels (10" Diameter x 3/4" Hole):

No. 26873 5/8" Wide

No. 26876 1/4" Wide

CAUTION: Recommended accessories for your Bench Grinder are listed above. The use of any other accessory might be more hazardous.

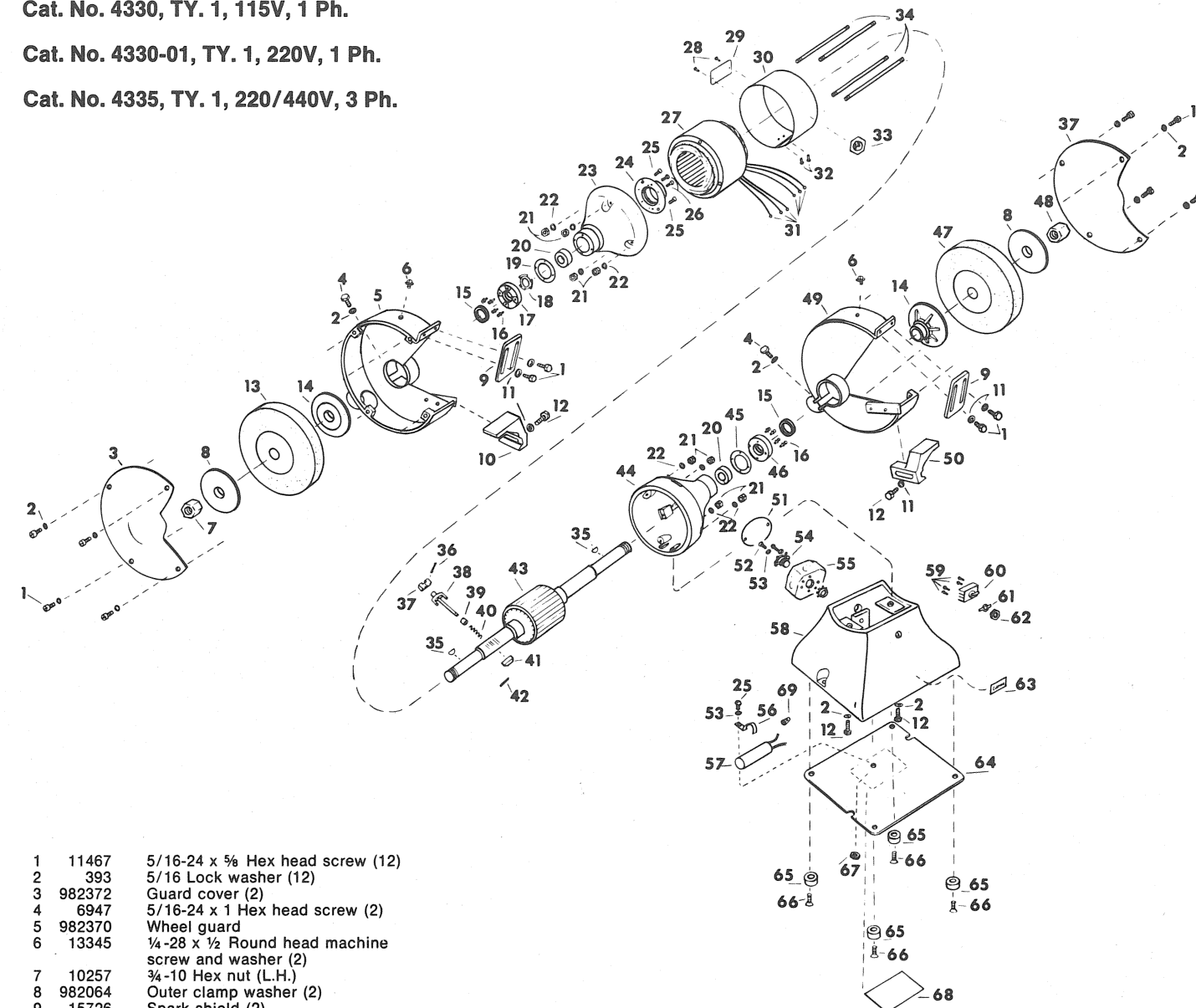
- Before mounting a new wheel, be sure that it is marked with an R.P.M. that is the same as, or higher than, the no-load speed of the grinder as marked on the nameplate. Do not overtighten wheel nut. Use only flanges furnished with this grinder.
- Never start a grinder with anyone, including the operator, standing in line with the wheel. After installing a replacement wheel, stand to one side and allow it to revolve freely for about one minute.
- Do not grind on the sides of grinding wheels unless they are the special wheels designed specifically for this purpose.
- Use of any other accessory or attachment other than those specified might create a hazard for the operator.

10" BENCH GRINDER

Cat. No. 4330, TY. 1, 115V, 1 Ph.

Cat. No. 4330-01, TY. 1, 220V, 1 Ph.

Cat. No. 4335, TY. 1, 220/440V, 3 Ph.



1	11467	5/16-24 x 5/8 Hex head screw (12)		
2	393	5/16 Lock washer (12)		
3	982372	Guard cover (2)		
4	6947	5/16-24 x 1 Hex head screw (2)		
5	982370	Wheel guard		
6	13345	1/4-28 x 1/2 Round head machine screw and washer (2)		
7	10257	3/4-10 Hex nut (L.H.)		
8	982064	Outer clamp washer (2)		
9	15726	Spark shield (2)		
10	15709	Tool rest (L.H.)		
11	801	Flat washer (6)		
12	5531	5/16-18 x 1 Hex head screw (4)		
13	10274	Grinding wheel (coarse)		
14	982063	Inner clamp washer (2)		
15	15711	Felt washer (2)		
16	367	10-32 x 5/8 Fillister head machine screw (8)		
17	15705	Bearing cap		
18	15717	Spring washer		
19	15722	Gasket		
20	15740	Ball bearing (2)		
21	405	1/4-20 Hex nut (8)		
22	416	1/4 Lock washer (8)		
23	15698	End housing		
†24	982927	Centrifugal switch (stationary)		
†25	375	10-32 x 3/8 Round head screw (3)		
†26	20406	6-32 x 3/16 Terminal screw (2)		
27	19664-61	Stator 115v. 1 phase		
	19664-65	Stator 220v. 1 phase		
	19664-75	Stator 220/440v. 3 phase		
28	14002	Rivet (2)		
29	61466	Nameplate		
30	15719	Stator Band		
31	34289	Lead terminal (6)		
32	22977	Drive screw (2)		
33	58122	Hex sticker		
34	982977	Stud (4)		
35	26587	Woodruff key (2)		
†985202		Centrifugal switch (rotating) includes items 36 - 42		
†36	16623	Pin		
†37	34246	Brush		
†38	982954	Brush carrier		
†39	17022	Sleeve		
†40	17020	Brush spring		
†41	17024	Weight		
†42	17021	Pin		
43	982952	Rotor		
44	19628	End housing		
45	19624	Gasket		
46	15706	Bearing cap		
47	10275	Grinding wheel (medium)		
48	10256	3/4-10 Hex nut (R.H.)		
49	982371	Wheel guard		
50	15710	Tool rest (R.H.)		
51	34521-01	Cover plate		
52	374	10-32 x 5/8 Round head machine screw (2)		
		#10 Lock washer (3)		
53	417	Cord clamp and nut		
54	54691	Outlet box		
55	34522-01	Condenser clamp		
†56	19325	Condenser		
†57	30390	Base		
58	995935	Terminal screw (4)		
59	2379	Switch (single phase)		
60	†36965	Switch (3 phase)		
	125920	Indicating plate		
61	19326	Hex nut		
62	24701	Caution Sticker		
63	72418			
64	15712	Base plate		
65	15723	Foot (4)		
66	372	1/4-20 x 3/4 Round head machine screw (4)		
67	406	10-32 Hex nut		
68	67314	Wiring diagram label 1 phase all voltages		
	67315-01	Wiring diagram label 3 phase 220 volts		
	67316-01	Wiring diagram label 3 phase 440 volts		
69	32114	Connector		
		Special part not shown for 3 phase grinders, No. 4335		
		982318 Insulator (2) (3 phase only) (switch)		
		Connection Diagrams		
		†45699 Connection Diagram (single phase)		
		45700-01 Connection Diagram (3 phase)		
		37485 Locking Ring for #36965 switch only (single phase only)		
		†Omit for 3 phase		

Free Manuals Download Website

<http://myh66.com>

<http://usermanuals.us>

<http://www.somanuals.com>

<http://www.4manuals.cc>

<http://www.manual-lib.com>

<http://www.404manual.com>

<http://www.luxmanual.com>

<http://aubethermostatmanual.com>

Golf course search by state

<http://golfingnear.com>

Email search by domain

<http://emailbydomain.com>

Auto manuals search

<http://auto.somanuals.com>

TV manuals search

<http://tv.somanuals.com>