



FM1400 Meat Mincer



First Use Safety Recommendation

Please read through this booklet for safe and efficient use of the appliance. We urge you read and follow all instructions, even if you are familiar with a similar appliance.

Keep this guide handy for future reference.

FM1400

IMPORTANT SAFEGUARDS

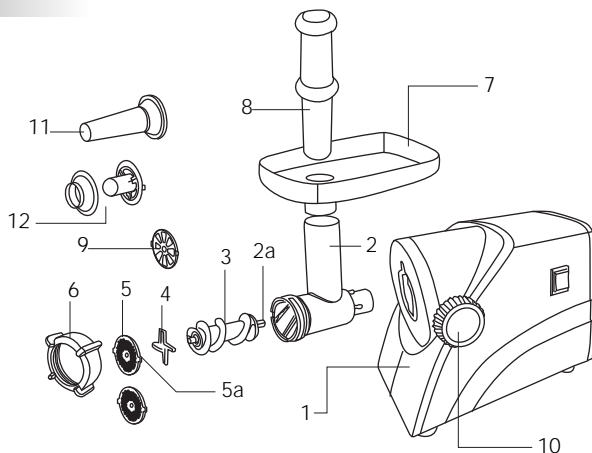
While using electrical appliances, in order to reduce the risk of fire, electric shock, and / or injury to persons, basic safety precautions should be followed, including the following:

- Read all instructions carefully, even if you are familiar with the appliance.
- To protect against the risk of electric shock, **DO NOT IMMERSE** the appliance, cord set or plug in water or other liquids.
- To clean, wipe the exterior with a damp cloth.
- Close supervision is necessary when any appliance is used near children. Do not allow children or any person unfamiliar with these instructions use this appliance. Never leave an appliance unattended when in use.
- Switch off and remove the plug from the power outlet when not in use, before assembling or disassembling parts, cleaning or carrying out any maintenance of the appliance. Never pull the cord while unplugging out from power outlet.
- Do not operate any appliance with a damaged cord or plug, or after the appliance malfunctions, or is dropped or damaged in any manner. Return the complete appliance to your nearest authorized service facility for examination, electrical repair, mechanical repair or adjustment to avoid any hazard.
- The use of attachments or accessories not recommended or sold by this appliance manufacturer may result in fire, electric shock or personal injury.
- Do not let the cord hang over the edge of a table, counter, or touch hot surfaces.
- Avoid touching hot surfaces, use handles and knobs.
- Do not operate or place any part of this appliance on or near any hot surfaces (such as gas or electric burner or in a heated oven).
- Do not abuse the cord. Never carry the appliance by the cord or yank it to disconnect it from the outlet; instead, grasp the plug and pull to disconnect.
- When using an extension cord with your appliance, make sure the extension cord is correctly wired, and rated for its use.
- This product is intended for household use only.
- Do not attempt to repair the appliance yourself; instead, take it to your Black & Decker-owned or Authorized Service Centre for repair.
- Care should be taken when handling slicing discs & blade, especially when removing them from the holders and during cleaning.
- Keep children and animals away from the appliance and cord set.

SAVE THESE INSTRUCTIONS

Parts Identification

1. Motor unit
2. Mincer head with inlet chute
3. Worm
4. Blade
5. Coarse & fine disc
6. Nut
7. Tray
8. Round pusher
9. Sausage disc
10. Locking screw
11. Sausage stuffer
12. Kebbe Attachment



Product Features :-

1400W as locked motor power - for the toughest of meat mincing.

Stainless Steel Blades and feeder - screw provides durability and efficiency

One speed operation - for all mincing operations

Reverse speed - assists in removing all blockages during operation.

Aluminium tray - for ease of feeding

Sausage stuffer - for making sausages.

Kebbe attachment - for making Kebbes.

Using your Meat Mincer

Your Meat Mincer is intended for grinding meat and vegetables for domestic purposes only. For indoor use only. Kindly ensure that all the packaging material has been removed from the unit. Remove any instruction, sticker etc. Ensure that the ratings on your mincer are the same as the line voltage in your home.

Wash all the parts other than the base unit in warm sudsy water and allow to dry. Your meat mincer is not only for grinding meat but can also be used for grinding vegetables, and making sausages..

Assembly of Mincer Head:

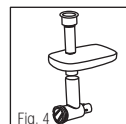
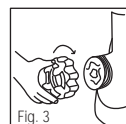
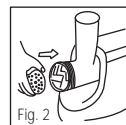
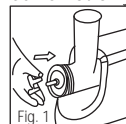
1. Remove the locking screw (10) by turning it in an anti-clockwise direction. With the inlet chute vertical, insert the mincer head (2) into the hole in the motor unit.
NOTE :- Ensure that the O-ring on the rear of the worm is in place.
2. Locate the plastic tab on the motor housing between the space between the 2 circular ribs on the Mincer head.
3. Fit the locking screw (10) & hand-tighten to lock the head in place.

Changing cutting disc

1. Remove the nut (6) by rotating it in an anti-clockwise direction.
2. Remove the disc (5), blade & worm & clean if necessary.
3. Mount the blade (4) on the worm (3) with the round side facing the worm and the smooth side in contact with the disc (Figure 1)

Note : the meat will not be minced if the blade is mounted with the wrong side facing the screw.

4. Place the required cutting disk (5) (Figure 2) into the end of the Mincer head, locating the 2 tabs on the disks into the recesses in the head.
5. Fit & hand-tighten the nut (6) (Figure 3).
6. Fit the tray (7) (Figure 4) into the top of the inlet chute.



English

How to use your Meat Mincer:

The meat mincer is intended to mince boneless meat for household use only.

1. After assembling the unit, place the mincer on a flat dry surface. Please ensure that the ventilation openings on the base and side of the motor are not blocked.
2. Make sure that the electrical supply at your home matches the supply prescribed on the unit. Connect the power cord into the supply socket.
3. Place the food tray on top of the filling shaft. Place a bowl or container below the metal head to collect the minced meat flowing through the plate.
4. Please ensure that the meat is thawed thoroughly before mincing. Check the meat for bones and unwanted fat. Clean the meat and cut into small cubes to fit the filling shaft and drop them into the food tray.
5. Switch the mincer 'ON' in the forward direction. Slowly feed the meat pieces into the filling shaft from the food tray and push down with the food pusher (Figure 5). Do not apply excessive force when pushing down. This could damage your mincer.



NOTE : Never use your finger to push the food.

There are chances that the meat will get stuck in the worm during operation. In these times, use the reverse speed to release the jam and revert to the forward direction again after 6-10 seconds. Do not run the appliance for more than 15 minutes continuously. After 15 minutes of continuous use, allow the appliance to cool to room temperature during 10 minutes before further usage. Once the task is over, switch the mincer 'OFF', switch off the electrical supply at the socket and remove the power from the socket before disassembling.

The unit is fitted with a thermal-cut-out. If this should operate, disconnect the appliance from the electrical supply and allow it to cool to room temperature before re-connecting.

Controls:- An explanation of all controls

- - Press once to operate the unit.
- - Press once to stop the unit from operation
- ≡ - Keep pressed in small intervals to reactivate from jams.



Screen Plates:-

There are three screen plates provided with this machine - coarse, fine and sausage.

Coarse - Ideal for raw meat, vegetables, nuts and dry fruits, cheese, fish etc.

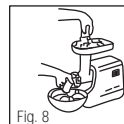
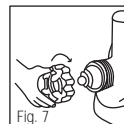
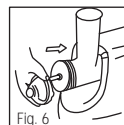
Fine - Ideal for raw or cooked meat, fish etc.

Sausage - Ideal for making sausages.

How to use your Kebbe Maker:

The Kebbe maker attachment (12) has two parts, the shaper and the cone. Follow the assembly instructions (see assembly of mincer attachment) up until the worm screw is fitted onto the motor shaft inside the mincer head (figure 6). Insert the kebbe maker with the rounded side facing the outside. Insert the securing cone and tighten the ring nut on to the head (figure 7).

Feed the Kebbe mixture through the food funnel using the food pusher. The mince will roll out as a hollow cylinder into the bowl (figure 8). Cut the continuous hollow cylinder into the desired lengths while it flows out. The Kebbe mixture is prepared by mincing meat and then passing the mince meat with the ingredients, wheat & onions. Repeat this till you achieve the required consistency.



How to use your Sausage Attachment:

1. Insert the sausage disc inside the grinder head
2. Insert the sausage stuffer into the nut.
3. Fit the assembled mincer head onto the motor unit.
4. Push the sausage skin (using either real or synthetic skin) over the sausage stuffer and knot the end.
5. Repeat the procedure 4 & 5, as mentioned under " How to use your meat mincer".
6. The sausage mixture is pressed through the sausage stuffer and into the sausage skin.
7. When the first sausage has reached the desired length, squeeze it through with your fingers at the end of sausage and turn the sausage around its own axis once or twice.

Tip : You can turn 'OFF' the appliance after each single sausage length

Note : The sharp side of the cutter must face the disc.

How to care for your meat mincer:

After use, switch 'OFF' the mincer and disconnect cord from the power supply. Ensure that the motor has stopped completely before disassembling. Remove the nut and detach the discs and the cutting blade from the worm. Pull the feeding screw out from the metal head. Detach the Mincer head by removing the screw, & pulling the head from the unit.

Remove the meat residue if any from the end of the feeder screw. Wash all the parts in hot sudsy water & allow to dry. Do not put the parts in the dishwasher. Wipe the motor unit with a damp cloth and dry. Wipe the mincer screen plate and blade with salad oil before storing to prevent corrosion.

Do's and Dont's:

1. Always ensure that the bones and unwanted fat are removed from the meat before mincing.
2. Always use the pusher provided. Never use your fingers or any other utensils.
3. Never immerse the base unit into any liquid.
4. Do not try to mince material with hard fibers like ginger.
5. To avoid blocks and Jams inside the feeder screw, don't use excessive force.
6. If the unit gets blocked due to hard materials lodged on to the feeder screw or cutting blade, immediately switch 'OFF' the unit and remove the ingredients before starting again.
7. When switching from 'ON' to 'OFF/REV' or vice versa, wait for 6 seconds to assure that the motor has stopped completely.
8. Care is needed when handling the cutter blade especially during removal, re-fitting and cleaning.
9. Switch 'OFF' and unplug the appliance before approaching parts that move while in use.
10. Keep loose clothes, long hair and cord away from moving parts.
11. Always disconnect the appliance from the supply if it is left unattended
12. Switch 'OFF' and unplug the appliance & allow moving parts to stop before changing accessories, cleaning or approaching parts which move in use.

Useful hints:

1. Do not over press the meat / vegetables with the pusher. Pusher must be used with suitable force.
2. In order to avoid the meat mincer being damaged, do not try to grind bone, nut or other hard things with this mincer.
3. When processing, the meat should be fresh, not frozen.



Protecting the environment

Separate collection. This product must not be disposed of with normal household waste.

Should you find one day that your Black & Decker product needs replacement, or if it is of no further use to you, do not dispose it off with other household waste. Make this product available for separate collection.



Separate collection of used products and packaging allows materials to be recycled and used again. Use of recycled materials helps prevent environmental pollution and reduces the demand for raw materials.

Local regulations may provide for separate collection of electrical products from the household, at municipal waste sites or by the retailer when you purchase a new product.

Black & Decker provides a facility for the collection and recycling of Black & Decker products once they have reached the end of their working life. To take advantage of this service please return your product to any authorised repair agent who will collect them on our behalf. You can check the location of your nearest authorised repair agent by contacting your local Black & Decker office at the address indicated in this manual. A list of authorised Black & Decker repair agents and full details of our after-sales service and contact are available on the Internet at: www.2helpU.com

BLACK & DECKER HOME APPLIANCE 2 YEAR WARRANTY

Black & Decker provides a 2 Year Warranty for this product from the date of purchase against defects due to defective materials or workmanship. Motor/element burn-outs due to voltage fluctuations are not covered under warranty. If the product should become defective within the warranty period, Black & Decker will repair or (at Black & Decker's discretion) replace it free of charge.

The warranty provisions do not cover failure due to accident, misuse, abuse, negligence or non observation of local regulations on the part of the user. Equally, the warranty provisions do not apply where the appliance has been serviced by a person not authorized by Black & Decker or serviced with non-approved parts and this has contributed to the fault of the product. Superseded models without a replacement equivalent will either be repaired or (at Black & Decker's discretion) replaced with another product of similar retail value.

UPON PURCHASE

Fill in the Warranty Registration Card with the original Authorized Dealer's stamp (indicating date of purchase) and attach your purchase receipt to it. Retain in case of claims in the future.

MAKING A CLAIM

Take your defective product together with the Warranty Registration Card & purchase receipt to your local service Centre. You can either do this in person or send it freight prepaid. If mailing or shipping your appliance, ensure that it is packed carefully in a sturdy carton with enough packing material to prevent damage. Include a note describing the problem to the service Centre and be sure to give your return address.

DESIGNED FOR DOMESTIC PURPOSES ONLY.

فارسی

ضمانتنامه ۲ ساله لوازم خانگی بلك اند دكر

بلك اند دكر اين محصول را به مدت ۲ سال از تاريخ خريد در برابر ايرادات ناشی از خرابی لوازم يا خطاهای ساخت تضمين می کند. سوختن موتور بر اثر نوسانات برق شهری مشمول اين ضمانت نمی شود. در صورتیکه دستگاه در خلال مدت ضمانت خراب شود، بلك اند دكر آنرا به صلاحديد خود و بطور مجاني تعمير و يا قطعات آنرا تعويض خواهد نمود.

اين ضمانت، ايرادات حاصله بر اثر تصادف، عدم استفاده صحيح، استفاده غلط، بي مبالائی يا عدم توجه به قوانين محلی در جایی که مالك دستگاه در آن سکونت دارد را در بر نمی گيرد. بگونه ای مشابه، در صورتیکه دستگاه توسط تعمير گاهی غير از مراکز تعمير مجاز بلك اند دكر سرويس شده باشد و يا در سرويس آن قطعات غير اصلی بکار رفته که منجر به خرابی دستگاه شده باشد، ضمانت دستگاه از اعتبار خارج می شود. مدل های قديمی که مشابه شان برای جایگزینی ديگر موجود نمی باشد، تعمير شده يا به صلاحديد بلك اند دكر با محصولی ديگر با ارزش مشابه جایگزین خواهند شد.

به هنگام خريد

فرم ثبت ضمانتنامه را پر نموده از فروشنده محصول بخواهد تا آنرا با ذکر تاريخ خريد محصول مهر نموده و رسيد خريد را نیز به آن الصاق نمايد. کارت ضمانت را جهت مراجعات بعدی حفظ نمايد.

روش مطالبه

وسيله معيوب خود را به همراه کارت ضمانت و رسيد خريد آن به نزديکترین مرکز سرويس مجاز محل سکونت خود ببريد. شما می توانيد اينکار را مستقيماً يا توسط پيك پيش پرداز انجام دهيد. در صورتیکه دستگاه خود را با پست و يا پيك ارسال می نمايد آنرا داخل يك کارتن محکم قرار داده و اطراف آن را با مواد مخصوص بسته بندی پر کنيد تا از آسیب رسيدن به دستگاه به هنگام حمل جلوگیری شود. به همراه دستگاه توضیحي مختصر از ايراد آنرا هم ارسال نموده و ذکر آدرس گیرنده را نیز فراموش نمايد.

طراحی شده تنها جهت مصارف خانگی

Names & Addresses for Black & Decker Service Concessionaries

Afghanistan: Ishan National Co., Opp. Ministry of Justice, Kabul. Tel.: +93-2-2101727. **Algeria:** SARL Outillage Corporation, 04 Route De Dely Brahim Cheraga, Alger. Tel.: +213-21-364363/508, Fax: +213-21-369667. **Bahrain:** Fawaz Al Zayani, P.O.Box 26563, Adliya, Manama. Tel.: +973-17-715252/712756, Fax: +973-17-713789. **Bangladesh:** Ultra Corporation, 8, Kushol Centre, Uttara, Dhaka 1230. Tel.: +880-2-8919272/9756 Ext.28, Fax: +880-2-9887167. **Egypt:** Anasia Egypt for Trading S. A. E., P.O.Box 2443, 110 Mostafa Refaat Street, Sheraton Heliopolis 11361, Cairo. Tel.: +20-2-2684159, Fax: +20-2-2684169. **Ethiopia:** Tewfik Sherif & Co. Ltd., P.O.Box 5583, Debre Zeit Road, Addis Ababa. Tel.: +251-1-651700/601, Fax: +251-1-650570. **India:** Gryphon Impex Pvt. Ltd., D-6/4, Okhla Industrial Area, Phase-I, New Delhi-110020. Tel.: +91-11-26372602-4, Fax: +91-11-26372601. **Iran:** Tehran - Service Centre of Iran, No 510, South Karger Ave, Below Pasteur Sq. Tehran. Tel.: +98-21-6490608/0656/6407672. **Kish Island:** Cayhan Electric Co., No. 69, Paradise Shopping Centre, Kish Island. Tel.: +98-76444-22894. **Jordan:** Bashilit Hardware, P.O.Box 1564, TLA Ali, Amman. Tel.: +962-6-5350009/4770741, Fax: +962-6-5350012/4789783. **Kenya:** Zylong Enterprises, IPS Building, Kuanda Street, P.O.Box 40877, Nairobi. Tel.: +254-2-338188/199, Fax: +254-2-330642. **Kuwait:** Al Omar Technical Co., P.O.Box 4062, 13041 Safat, Kuwait. Tel.: +965-4848595/0039, Fax: +965-4845652. **Lebanon:** Est. F.A. Kettaneh SA, P.O.Box 110242, Dora Highway, Kettaneh Building, Beirut. Tel.: +961-1-255860/6, Fax: +961-1-255891. **Libya:** El Ghoul Brothers, P.O.Box 348, Islamic Call Bldg., Office 201-202, Benghazi. Tel.: +218-61-9097681/4183, Fax: +218-61-9094123. **Madagascar:** Group Tana Confort S. A. R. L., B. P. 1770, Antananarivo. Tel.: +261-20-2264505, Fax: +261-20-2264244. **Malta:** John G. Cassar Ltd., 36 Victory Str, Qormi QRM 06, Malta. Tel.: +356-21-493251, Fax: +356-21-483231. **Mauritius:** Happy World Marketing Ltd., Block 2, Industrial Estate, Coromandel, P.O.Box 429, Port Louis. Tel.: +230-2076700, Fax: +230-2337330/7400. **Nepal:** Universal Trading Centre, P.O.Box 1947, Tripureswor, Kathmandu. Tel.: +977-1-262192/260587/785, Fax: 261154. **Nigeria:** Amin Bros. Eng. Co. Ltd., 30A (Plot 1291), Akin Adesola Street, Victoria Island, Lagos. Tel.: +234-1-3201778, Fax: +234-1-2613667. **Oman:** Oman Mktg. & Service Co., P.O.Box 2734, Ruwi, Muscat. Tel.: +968-560232, Fax: +968-560255. **Pakistan:** Karachi - Ammar Service & Spares, 60, Bank Arcade, Serai Road, Karachi. Tel.: +92-21-2426905, Fax: 2427214/5243. **Pakistan:** Lahore - Electronics Inn, 212-G Raja Centre, Main Market, Gulberg, Lahore. Tel.: +92-42-5756750. **Philippines:** Modern Home International Enterprises, 213 Rizal Ave. Extension, between 2nd and 3rd Ave. Kaloookan City. Tel.: +632 366-4487, Fax: +632 366-4489. **Qatar:** Al Muftah Trading & Cont., P.O.Box 875, Doha. Tel.: +974-4650880/4446868, Fax: +974-4441415. **Saudi Arabia:** Dammam - Ebrahim Fawaz Al Zayani, P.O.Box 76026, Al Raka, Dammam. Tel.: +966-3-8140914, Fax: +966-3-8140824. **Jeddah:** Anasia - P.O.Box 50959, Jeddah - 21477. Tel.: +966-2-6710014, Fax: +966-2-6725929. EAC (Al Yousuf) - P.O. Box 30377, Jeddah - 21477. Tel.: +966-2-6519912, Fax: +966-2-6511153. **Madina:** Garziz Trdg. for Bldg. Mat.&Decor., P.O.Box 3364, Madina. Tel.: +966-4-8261490/8227636, Fax: +966-4-8265741. **Riyadh:** Anasia, P.O.Box 18689, Riyadh - 11425. Tel.: +966-1-2693751, Fax: +966-1-4501178. **Yanbu:** Bin Afif, P.O.Box 530 Yanbu, Al Bahr. Tel.: +966-4-3222626/8867, Fax: +966-4-3222210. **Sri Lanka:** Delmege Gen. Equip. Pvt. Ltd., No. 428/1AT. B., Jaya Mawatha (Darley Road), Colombo-10. Tel.: +94-11-2665914, Fax: +94-11-2665915. **Sudan:** United Distribution Company, P.O.Box 325, Sayed Abdul Rehman Street, Khartoum. Tel.: +249-11-772612/777296, Fax: +249-11-770919. **Tanzania:** General Motors Investment, P. O Box 16541, 14 Vingunguti Nyerere Road, Dar Es Salaam. Tel.: +255-22-2862661/5022, Fax: +255-22-2862667/5412/3. **Tunisia:** STE Tunisienne De Quincaillerie Stq., Nvelle Z I 2013, Ben Arous, Tunis, Tunisia. Tel: +216 71386102, Fax: +216 71380412. **UAE:** Abu Dhabi - Light House Electric., P.O.Box 120, Abu Dhabi. Tel.: +971-2-6726131, Fax: +971-2-6720667. **Dubai - Black & Decker (O) A.G., P.O.Box 5420, Dubai. Tel.: +971-4-7028234/233, Fax: +971-4-2822765. Ideal Mach. & Equipt. R. W/shop P.O.Box 37116, Al Quoz, Dubai. Tel.: +971-4-3474160, Fax: +971-4-3474157. Sharjah - McCoy Middle East LLC, P.O.Box 20228, Sharjah. Tel.: +971-6-5336321, Fax: +971-6-5336320. **Uganda:** The Building Centre, Kitgum House, 52 Station Road, P.O.Box 7436, Kampala. Tel.: +256-41-234567, Fax: +256-41-236413. **Yemen:** Aden - Middle East Trad. Co. Ltd., Mulla Dakka, Aden. Tel.: +967-2-240950, Fax: +967-2-240952. **Sana'a:** Middle East Trad. Co. Ltd., P.O.Box 12363, Hayel Street, Sana'a. Tel.: +967-1-204201, Fax: +967-1-204204. **Taiz:** Middle East Trad. Co. Ltd., Campa area near Al-Kair mosque, Taiz. Tel.: +967-4-231610/232033, Fax: +967-4-219869. **Zimbabwe:** J.D.Distributors, P.O.Box 226, 17 Bessemer Road, Graniteside, Harare. Tel.: +263-4-753913-7, Fax: 753918. **Cyprus:** G. Kyprianou Trading Co Ltd., 51 Prodromou Ave. Strovolos, 1681, P.O. Box 23318 Nicosia Cyprus. Tel.: 00357 22 468170/1, Fax: 00357 22 468186, Email gkttid@spidernet.com.cy**



WARRANTY REGISTRATION CARD

YOUR NAME/الإسم _____

YOUR ADDRESS/العنوان _____

POSTCODE/الرمز البريدي _____

DATE OF PURCHASE/تاريخ الشراء _____

DEALER'S NAME & ADDRESS/إسم وعنوان البائع _____

PRODUCT MODEL NO. FM1400

Free Manuals Download Website

<http://myh66.com>

<http://usermanuals.us>

<http://www.somanuals.com>

<http://www.4manuals.cc>

<http://www.manual-lib.com>

<http://www.404manual.com>

<http://www.luxmanual.com>

<http://aubethermostatmanual.com>

Golf course search by state

<http://golfingnear.com>

Email search by domain

<http://emailbydomain.com>

Auto manuals search

<http://auto.somanuals.com>

TV manuals search

<http://tv.somanuals.com>