

Black & Decker®

OWNER'S MANUAL

BELT SANDERS

MOTOR

Your tool is powered by a Black & Decker built motor. Be sure your power supply agrees with nameplate marking. **VOLTS 50/60 Hz** means **Alternating Current ONLY**. **VOLTS DC60 Hz** means it will also operate on **Direct Current**. Voltage variation of more than 10% will cause loss of power and over-heating. All B&D tools are factory-tested; if this tool does not operate, check the power supply.

BRUSHES

Carbon Brushes should be regularly inspected for wear. When the plastic brush inspection caps (located low on each side of the front of the housing) are unscrewed, the brush and spring assemblies may be withdrawn from the tool.

Keep brushes clean and sliding freely in their guides. Carbon brushes have varying symbols stamped into them, and if the brush is worn down to the line closest to the spring, they must be replaced. New brush assemblies are available at Service Centers; see back page of this booklet.

EXTENSION CORD

When using the tool at a considerable distance from power source, a 3-conductor, grounding-type extension cord of adequate size must be used for safety, and to prevent loss of power and over-heating. Use the table below to determine the minimum size wire which should be in the extension cord.

Use only three wire extension cords which have three-prong grounding-type plugs and three-pole receptacles which accept the tool's plug. Replace or repair damaged cords.

Ampere rating (on nameplate)	0 to 2.0	2.10 to 3.4	3.5 to 5.0	5.10 to 7.0	7.10 to 12.0	12.1 to 16.0
Ext. Cable length	Wire Size (A.W.G.)					
25 ft.	18	18	18	18	16	14
50 ft.	18	18	18	16	14	12
75 ft.	18	18	16	14	12	10
100 ft.	18	16	14	12	10	—
150 ft.	16	14	12	12	—	—
200 ft.	16	14	12	10	—	—

SAFETY RULES FOR POWER TOOLS

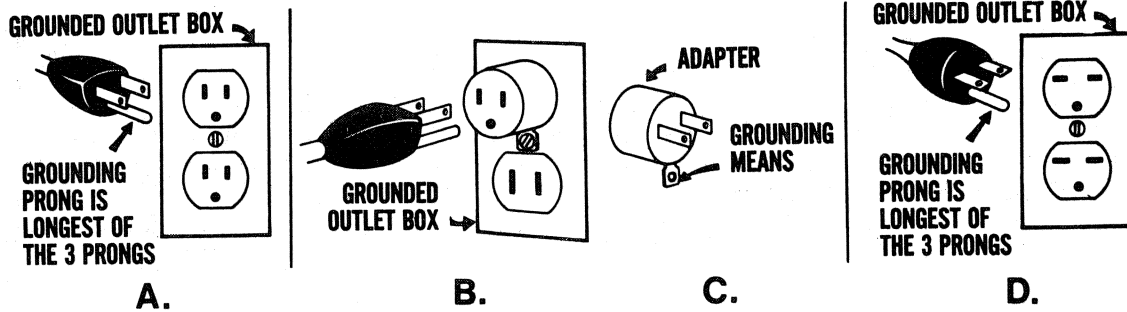
1. **KNOW YOUR POWER TOOL** — Read owner's manual carefully. Learn its applications and limitations as well as the specific potential hazards peculiar to this tool.
2. **GROUND ALL TOOLS — UNLESS DOUBLE-INSULATED.** If tool is equipped with three-prong plug, it should be plugged into a three-hole electrical receptacle. If adapter is used to accommodate two-prong receptacle, the adapter wire must be attached to a **known ground.** **Never** remove third prong.
3. **KEEP GUARDS IN PLACE** and in working order.
4. **KEEP WORK AREA CLEAN.** Cluttered areas and benches invite accidents.
5. **AVOID DANGEROUS ENVIRONMENT.** Don't expose power tools to rain. Don't use power tool in damp or wet locations. And keep work area well lit.
6. **KEEP CHILDREN AWAY.** All visitors should be kept safe distance from work area.
7. **STORE IDLE TOOLS.** When not in use, tools should be stored in dry, high or locked-up place — out of reach of children.
8. **DON'T FORCE TOOL.** It will do the job better and safer at the rate for which it was designed.
9. **USE RIGHT TOOL.** Don't force small tool or attachment to do the job of a heavy duty tool.
10. **WEAR PROPER APPAREL.** No loose clothing or jewelry to get caught in moving parts. Rubber gloves and footwear are recommended when working outdoors.
11. **USE SAFETY GLASSES** with most tools. Also face or dust mask if cutting operation is dusty.
12. **DON'T ABUSE CORD.** Never carry tool by cord or yank it to disconnect from receptacle. Keep cord from heat, oil and sharp edges.
13. **SECURE WORK.** Use clamps or a vise to hold work. It's safer than using your hand and it frees both hands to operate tool.
14. **DON'T OVERREACH.** Keep proper footing and balance at all times.
15. **MAINTAIN TOOLS WITH CARE.** Keep tools sharp at all times, and clean for best and safest performance. Follow instructions for lubricating and changing accessories.
16. **DISCONNECT TOOLS.** When not in use, before servicing; when changing accessories such as blades, bits, cutters, etc.
17. **REMOVE ADJUSTING KEYS AND WRENCHES.** Form habit of checking to see that keys and adjusting wrenches are removed from tool before turning it on.
18. **AVOID ACCIDENTAL STARTING:** Don't carry plugged-in tool with finger on switch. Be sure switch is "OFF" when plugging in.
19. **OUTDOOR USE EXTENSION CORDS.** When tool is used outdoors, use only extension cords suitable for use outdoors and so marked.
20. **DO NOT OPERATE** portable electric tools in gaseous or explosive atmospheres. Motors in these tools normally spark, and the sparks might ignite fumes.

SAFETY WITH BELT SANDERS

1. Before changing belts, or at any time the tool is not actually being used, be sure that the trigger switch is in the "OFF" position and that the cable is unplugged from the power supply.
2. Before plugging in the cable, be sure that the trigger switch is in the "OFF" position.
3. When starting or stopping the Sander hold the tool off of the work surface to prevent it from "running away" or gouging.
4. Use correct size belts — 3" x 24".

GROUNDING

This tool should be grounded while in use to protect the operator from electric shock. The tool is equipped with an approved three-conductor cord and three-prong grounding type plug to fit the proper grounding type receptacle. The green (or green and yellow) conductor in the cord is the grounding wire. Never connect the green (or green and yellow) wire to a live terminal. If your unit is for use on less than 150 volts, it has a plug like that shown in Figure A. If it is for use on 150 to 250 volts, it has a plug like that shown in Figure D. An adapter, Figures B and C, is available for connecting Figure A plugs to two-prong receptacles. The green-colored rigid ear, lug, etc., must be connected to a permanent ground such as a properly grounded outlet box. No adapter is available for a plug as shown in Figure D. Adapter shown in Figures B & C is not for use in Canada.



We recommend that you NEVER disassemble the tool or try to do any rewiring in the electrical system. Any such repairs should be performed only by B&D Service Centers or other qualified service organizations. Should you be determined to make a repair yourself, remember that the green colored wire is the "grounding" wire. Never connect this green wire to a "live" terminal. If you replace the plug on the power cord, be sure to connect the green wire only to the grounding (longest) prong on a 3-prong plug. Never remove the grounding prong from the plug.

If you use an extension cord, be sure that it is a 3-conductor, grounding type cord. Grounding must be continuous from the tool plug to the grounded receptacle.

SWITCHES

Trigger Switch

To start tool, depress trigger; to stop, release trigger. To lock trigger in "ON" position for continuous operation, depress trigger, push in locking button, and release trigger. To release locking mechanism and turn off tool, depress trigger and release.

2-Speed Switch

Use the HIGH speed setting for high rate of material removal. Use the LOW speed setting to obtain smoother finishes on materials. The speed settings may be changed while the motor is running.

OPERATION

When you receive your unit, you will find a sanding belt already in operating position. To prevent the belt from striking the wear plate when the unit is initially turned on, turn the adjusting screw (See Figure 3) $\frac{1}{2}$ turn clockwise. Turn the unit on and, by using the adjustment screw, adjust belt flush to edge of shoe. A minor belt adjustment may still have to be made while sanding.

When using the Sander, grasp the handle and front knob firmly. Before applying tool to the work, turn on Sander. Then, to avoid gouging, begin your initial sanding stroke as the tool is lowered to the surface of the work. Keep the sander moving to insure even sanding. The weight of the tool itself provides sufficient pressure, in most cases, for proper sanding. Lift the Sander from the work before turning tool "OFF" in order to prevent gouging.

OPERATION (Cont'd)

For No. 4028 Dust Collecting Sander:

This Belt Sander is equipped for use with regular sanding belts. For use with B&D 'LUSTERLON' belts, remove clip insert (Fig. 1) by inserting a screwdriver into slot and prying against handle. Clip insert is easily replaced by reversing operation and pressing against clip insert until it snaps into place (Fig.2). It is recommended that the clip insert be replaced when using regular sanding belts, as it increases the efficiency of the dust collection.

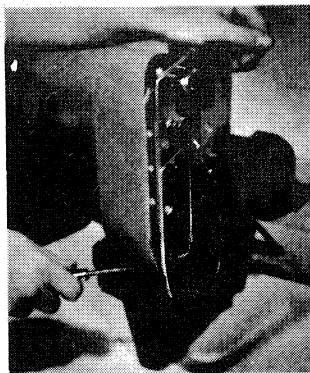


Fig. 1

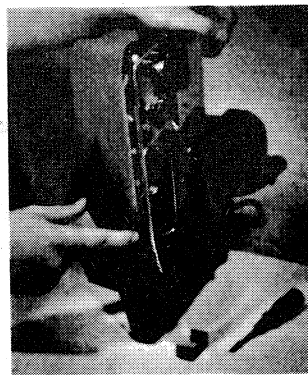


Fig. 2

When using the Dust Collecting Belt Sander with 'LUSTERLON' Belts and Lubricants, it is recommended that the intake pipe be removed by removing the pipe spring and the intake pipe screw. This will keep the dust bag and intake pipe from becoming clogged with lubricant. To replace the intake pipe, reverse the above procedure.

CHANGING SANDING BELTS

Be sure that switch is off and plug is disconnected:

1. Lift lever (fig. 3) to retract front pulley.
2. Lift sanding belt off pulleys.
3. Insert the new belt with the arrow (on the belt backing) pointed in the direction of rotation.
4. Slide belt down firmly on each pulley being sure that sanding belt is placed properly beneath wear plate.
5. Return cam lever back to original position.
6. Adjust sanding belt on front pulleys with adjusting screw.

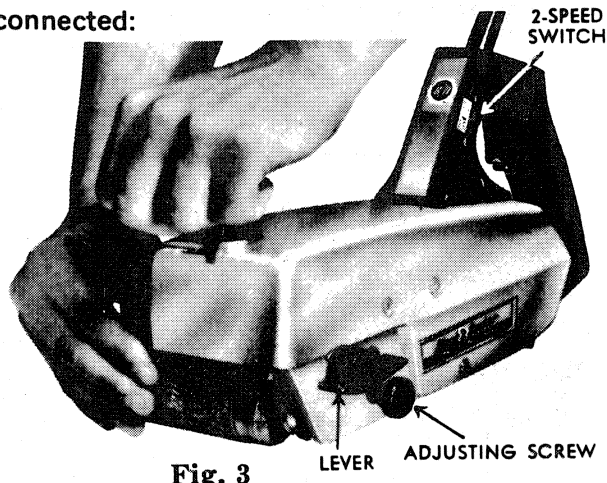


Fig. 3

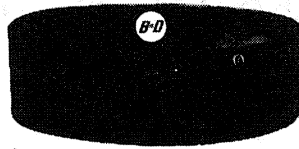
LUBRICATION AND CLEANING

All bearings in the tool are sealed ball bearings which have been lubricated at the factory and contain sufficient lubricant to last the life of the bearing. Lubricate bearings in Dust Collector motor with light machine oil after every 15 to 20 hours of use.

It is recommended that the tool be sent to one of our Factory Service Branches for inspection and relubrication of the gear chamber after approximately 1 year's use.

Dust and grit which may collect in the main housing restricts the flow of air around the motor. It is recommended that an air hose be used to blow out this dirt whenever it can be seen collecting in and around the air slots. In metal application it is recommended that the above procedure be followed every few hours.

To protect the aluminum housing from the cutting action of the sanding belt, a wear plate of hardened steel is attached inside the housing. After considerable use, the wear plate may become scored. If this happens, replace the wear plate before the housing is damaged.



'LUSTERLON' BELTS:

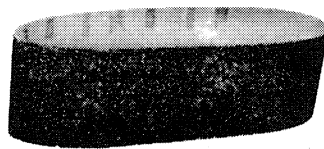
Permits finishing, polishing and cleaning of metals, wood or hard plastic laminates with our New Super-Duty Belt Sanders. Made of unwoven nylon mesh impregnated with abrasive. Does not clog or load. Water and oil resistant. Use of lubricants below with 'LUSTERLON' Belts insures longer belt life and cooler operation. Lubricants can be washed from belts with kerosene.

Cat. No.	Type	Grit	Belt Size	Representative Applications
C58384	Silicon Carbide	150 coarse	3"x24"	Cleans and renews stainless steel finish on structural forms and panels; gives satin finish to metals prior to plating; removes scuff marks from plastic floor tile, etc.
C58385	Silicon Carbide	280 medium	3"x24"	Refinishes wood, linoleum or plastic desk tops; cleans old painted surfaces prior to repainting; produces satin finish on painted surfaces; removes scuff marks from wood floors; finishes sealer coat prior to painting or varnishing, etc.
C58386	Silicon Carbide	500 fine	3"x24"	Cleans corrosion from copper foil printed circuit boards; removes oxidation from aluminum, chromium, etc., gives glass finish on color coat on cabinets, etc; gives satin finish on plastic panels such as Formica, etc.; polishes furniture, boats, etc.

'LUSTERLON' BELT LUBRICANTS:

Cat. No. C58557 'LUSTERLUBE'. For finishing and polishing metals. 1 1/4 lb. tube.

Cat. No. C58599 'LUSTERLIQUID' Polish. For final finishing lacquered wood or hard plastic laminates. 1 pint can.



SANDING BELTS:

Precision-made to give maximum abrasive action. Exactly cut and bonded for perfect fit. Packed 10 per box. Quantity Prices: See B&D Price List and Save.

Belt Type and Use	Cat. No.	Grit	Cat. No.	Grit
CLOSED COAT ALUMINUM OXIDE for unfinished or new wood, ferrous metal, non-ferrous metals (aluminum, lead, copper, solder.)	C58368	36 coarse	C58376	80 medium
	C58370	40 coarse	C58378	100 fine
	C58372	50 medium	C58380	120 fine
	C58374	60 medium		
OPEN COAT ALUMINUM OXIDE for removing lacquer, paint or varnish. Also for green or resinous wood.	C58367	24 coarse	C58375	60 medium
	C58369	36 coarse	C58377	80 medium
	C58371	40 coarse	C58379	100 fine
	C58373	50 medium		

CAUTION: The above accessories are recommended for use with your Belt Sander. The use of any other accessory or attachment might be hazardous.

GUARANTEE

Black & Decker guarantees, for one year from date of purchase, to correct by repair or parts replacement without charge any defect due to faulty material or workmanship. Simply return the complete unit, transportation prepaid, to any Black & Decker Service Center or Authorized Service Station. Naturally, we assume no responsibility for damage caused by misuse, careless handling or where repairs have been made or attempted by others. No other guarantee, written or verbal, is authorized by us.

IMPORTANT!

To assure product SAFETY and RELIABILITY, repairs, maintenance and adjustment (excluding brush replacement) should be performed by BLACK & DECKER Service Centers or other qualified service organizations, always using BLACK & DECKER replacement parts.

FACTORY SALES & SERVICE CENTERS

	Area Code	Telephone No.		Area Code	Telephone No.
ALABAMA: Birmingham 35209, 10 Green Springs Highway	205	942-0538	NEW JERSEY: Patterson (Little Falls) 07424, Rt. 46 East, at Lower Notch Rd.	201	256-9373
ARIZONA: Phoenix 85004, 537 E. McDowell Rd.	602	258-1332	Union 07083, 2305 U. S. Highway 22 West (1 Block West of Flagship)	201	964-7040
ARKANSAS: Little Rock, 7220, 519 West Seventh Street	501	372-3040	NEW MEXICO: Albuquerque 87107, 2812 Candelaria Road N.E.	505	345-2503
CALIFORNIA: Anaheim 92802, 1235 So. Euclid Ave.	714	772-4050	NEW YORK: Albany (Latham) 12110, 836 Troy-Schenectady Rd.	518	785-1867
Fresno 93703, 2518 North Blackstone Avenue	209	224-2152	Buffalo 14209, 881 W. Delavan Ave.	716	884-6220
Los Angeles 90007, 2432 S. Broadway	213	749-0371	Great Neck 11021, 98 Cuttermill Rd. (Sales only)	516	829-9504
Los Angeles 90007, 2510 S. Broadway (Sales only)	213	749-7638	Home Products Division	516	829-9505
Oakland (San Leandro) 94578, 15206 E. 14th St.	415	276-1610	Automotive Division	516	829-9506
Riverside 92506, 4010 Merrill Ave.	714	787-9700	New York 11590, 1059 Old Country Road (Westbury, L.I.)	516	997-6140
Sacramento 95814, 1915 Seventeenth Street	916	444-3188	New York 10462, 1894 E. Tremont Avenue (Bronx)	212	792-2700
San Diego 92105, 3811 El Cajon Blvd.	619	280-3331	New York 10014, 227 Varick St. (Manhattan)	212	929-6450
Santa Clara 95050, 2291 The Alameda	408	241-9162	New York 11377, 56-15 Queens Blvd. (Woodside)	212	335-1042
S. San Francisco 94080, P.O. Box 231, 1139 Airport Blvd.	415	871-7278	Rochester 14620, 476 Clinton Ave. S.	716	454-3814
Van Nuys 91411, 14920 Victory Blvd.	213	787-5531	Syracuse 13224, 2140 Erie Blvd. E.	315	446-3086
COLORADO: Denver 80204, 675 Kalamath St.	303	222-0621	Westbury 11590, 1059 Old Country Rd. (L.I.)	516	997-6140
CONNECTICUT: Bridgeport 06603, 1055 Lafayette Circle	203	368-3419	NORTH CAROLINA: Charlotte 28206, 1710 N. Graham St.	704	375-3721
Hartford 06114, 131 Meadow Street	203	249-6241	Fayetteville 28302, P.O. Box 424, Highway 301, S.	919	425-9552
DISTRICT OF COLUMBIA: Washington			Greensboro 27403, 1010 W. Lee Street	919	275-0906
Bladensburg, Maryland 20710, 4501 Baltimore Ave.	301	779-3808	Raleigh 27604, 2420 Atlantic Avenue	919	834-8207
Falls Church, Virginia 22046, 129 Annandale Road	703	533-1147	OHIO: Cincinnati 45203, 1225 Western Ave.	513	421-2275
Rockville, Maryland 20852, 1020 Rockville Pike	301	340-7377	Cleveland 44113, 3901 Detroit Ave.	216	651-4243
FLORIDA: Jacksonville 32208, 5224 Pearl Street	904	356-2951	Columbus 43227, 3975 E. Livingston Ave.	614	237-0461
Miami 33158, 13345 N.W. Seventh Avenue	305	681-6658	Dayton 45409, 2898 South Dixie Drive	513	298-1951
Orlando 32806, 940 S. Orange Ave.	305	423-1651	Toledo 43607, 3231 Dorr St.	419	531-8921
Tampa 33609, 3401 W. Kennedy Blvd.	813	872-8317	OKLAHOMA: Oklahoma City 73106, 1318 Linwood Blvd.	405	232-7515
GEORGIA: Atlanta 30313, 316 Techwood Drive, N.W.	404	524-0431	Tulsa 74145, 3120 South Sheridan Road	918	622-5666
Atlanta 30354, 3271 Hamilton Blvd., S.W. (Sales only)	404	762-1728	OREGON: Portland 97209, 1640 N.W. Johnson Street	503	228-8631
HAWAII: Honolulu 96813, 675 Auahi Street	808	536-9374	PENNSYLVANIA: Allentown (Whitehall) 18052, 2242 MacArthur Rd.	215	435-9544
ILLINOIS: Chicago 60101, Addison, 1710 W. Armitage Court	312	261-8630	Harrisburg 17112, 6070 Allentown Blvd.	717	845-0651
Chicago 60646, Lincolnwood, 6710 N. Crawford Ave.	312	673-0923	Lancaster 17604, 715 Fountain Ave.	717	393-5251
Chicago 60453, Oak Lawn, 6343 West 95th St.	312	423-7212	Philadelphia 19103, 333 No. 20th Street (Service only)	215	564-5520
Des Plaines 60018, 2180 S. Wolf Rd. (Sales only)	312	827-0083	Pittsburgh 15232, 5437 Baum Blvd.	412	362-2700
Rock Island 61201, 725 30th Street	309	788-1744	Wayne 19087, 125 Stratford Avenue, Stratford Building #3 (Sales only)	215	688-0267
INDIANA: Evansville 47710, 307 First Ave., Crescent Center	812	425-4269	RHODE ISLAND: E. Providence 02914, 2777 Pawtucket Ave.	401	434-1655
Hammond 46323, 7103 Kennedy Ave.	219	845-5100	SOUTH CAROLINA: Greenville 29601, 407 Pendleton St.	803	232-3038
Indianapolis 46202, 1125 W. 16th Street	317	632-5569	TENNESSEE: Knoxville 37917, 4110 North Broadway	615	688-0921
IOWA: Des Moines 50312, 2811 Ingersoll Ave.	515	244-7257	Memphis 38116, 986 East Brooks Rd.	901	332-3444
KANSAS: Wichita 67214, 203 N. Mathewson Street	316	263-6571	Nashville 37203, 601 Eighth Ave. S.	615	254-1061
KENTUCKY: Louisville 40209, 4407 Park Blvd.	502	366-1495	TEXAS: Amarillo 79106, 3008 West 6th Ave.	806	373-1531
LOUISIANA: Metairie (New Orleans) 70002, 3310 N. Causeway Blvd.	504	837-2550	Dallas 75207, 1808 N. Industrial Blvd. (Service only)	214	741-6401
MARYLAND: Baltimore 21211, 203 West 28th Street	301	467-7411	Dallas 75247, 7701 Stemmons Freeway (Sales only)	214	630-6021
Baltimore 21205, 4712 Erdman Ave.	301	485-5550	El Paso 79925, 1400 Meigsdrur Street	915	778-9769
Bladensburg (Wash. D.C.) 20710, 4501 Baltimore Ave.	301	779-3808	Fort Worth 76103, 1801 Bomar Street	817	336-0175
Rockville 20852, 1020 Rockville Pike	301	340-7377	Houston 77003, 105 Sampson Street	713	228-5721
Towson (Balt.) 21204, 701 East Joppa Rd.	301	828-2910	San Antonio 78201, 500 Culebra Avenue	512	732-1221
MASSACHUSETTS: Boston (Brighton) 02135, 12 Market St.	617	782-6264	UTAH: Salt Lake City 84115, 1541 S. Third West Street	801	486-7056
MICHIGAN: Detroit 48219, 18133 W. McNichols Rd.	313	534-8890	VIRGINIA: Falls Church 22046, 129 Annandale Road	703	533-1147
Detroit (Mt. Elliott) 48234, 11360 East Seven Mile Rd.	313	527-5010	Norfolk 23513, 7631 Sewells Point Road	804	480-3333
Flint 48504, G-4083 Clio Road	313	789-6191	Richmond 23222, 1424 Chamberlayne Ave.	804	649-9425
Grand Rapids 49509, 3662 Clyde Park Ave., S.W.	616	534-7708	WASHINGTON: Seattle 98109, 701 Third Ave., N.	206	282-6432
MINNESOTA: Bloomington (Minneapolis-St. Paul) 55420, 9712 Garfield Ave.	612	884-9191	Spokane 99207, 3550 North Market Street	509	485-9164
MISSOURI: Kansas City 64111, 4324 Main St.	816	531-0629	WEST VIRGINIA: Charleston 25312, 1638 Sixth Ave.	304	343-0289
Kansas City 64111, 4324 Main St. (Sales only)	816	531-0633	WISCONSIN: Milwaukee (West Allis) 53227, 10903 W. Lincoln Ave.	414	543-9590
St. Ann 63074, 10933 St. Charles Rock Road	314	759-4651			
St. Louis 63110, 615 S. Vandeventer Jve. (Service only)	314	533-2210			
St. Louis 63110, 615 S. Vandeventer Ave. (Sales only)	314	291-2772			
NEBRASKA: Omaha 68102, 2218 Leavenworth Street	402	345-2330			
BLACK & DECKER MFG. CO., Limited, Canada					
BROCKVILLE, ONTARIO			MONTREAL 10, P. Q.		7865 St. Lawrence Blvd.
CALGARY, ALBERTA			OTTAWA, ONTARIO		418 Laurier Avenue, West
DON MILLS, ONTARIO		1003 11th Avenue, S. W.	QUEBEC CITY, P. Q.		330 St. Roch Street
EDMONTON, ALBERTA		2 Valleybrook Drive	REGINA, SASKATCHEWAN		1076 Albert Street
HALIFAX, NOVA SCOTIA		1442 Ave.—142 Street	SASKATOON, SASK.		Diamond Ind. Center, Quebec & 33rd St.
HAMILTON, ONTARIO		803 McLean Street	VANCOUVER 10, B. C.		24 West 2nd Ave.
LONDON, ONTARIO		180 Parkdale Ave., N.	WINNIPEG 10, MANITOBA		934 St. James St.
		631 Commissioners Rd., East			

THE BLACK & DECKER MFG. CO., TOWSON, MD. 21204, U.S.A.

Form No. 56592-05

(Jun77-PS) Printed in U.S.A.

Free Manuals Download Website

<http://myh66.com>

<http://usermanuals.us>

<http://www.somanuals.com>

<http://www.4manuals.cc>

<http://www.manual-lib.com>

<http://www.404manual.com>

<http://www.luxmanual.com>

<http://aubethermostatmanual.com>

Golf course search by state

<http://golfingnear.com>

Email search by domain

<http://emailbydomain.com>

Auto manuals search

<http://auto.somanuals.com>

TV manuals search

<http://tv.somanuals.com>