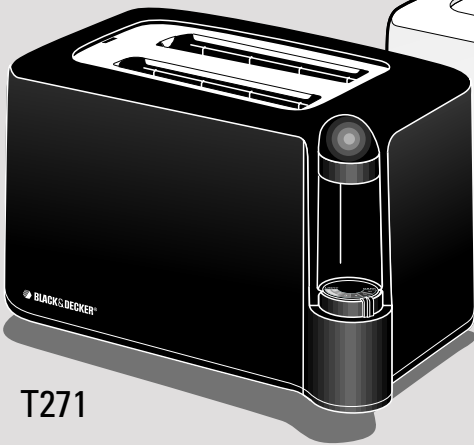




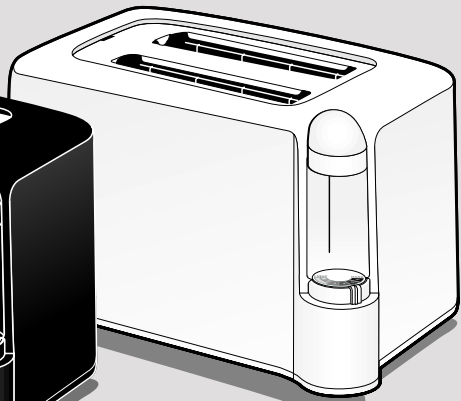
BLACK & DECKER®

SAVE THIS USE AND CARE BOOK

Super-Wide Slot Toaster



T271



T270



1-800-231-9786

Questions? Please call BLACK & DECKER TOLL FREE!

MODELS T270/271

IMPORTANT SAFEGUARDS

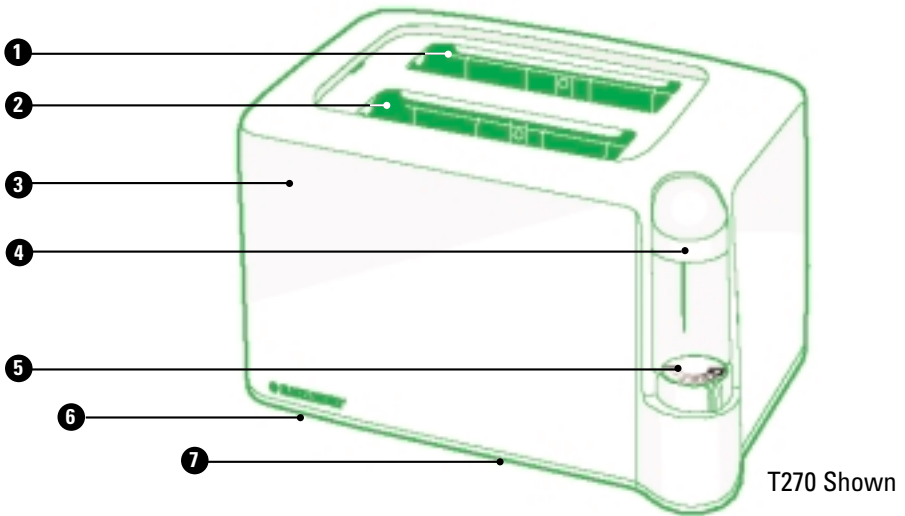
When using electrical appliances, basic safety precautions should always be followed, including the following:

READ ALL INSTRUCTIONS.

- Do not touch hot surfaces. Use handles or knobs.
- To protect against electrical shock, do not immerse cord, plug, or any non-removable parts of this toaster in water or other liquid.
- Close supervision is necessary when any appliance is used by or near children.
- Unplug from outlet when not in use and before cleaning. Allow to cool before cleaning.
- Do not operate any appliance with a damaged cord or plug or after the appliance malfunctions or has been damaged in any manner. Return the appliance to an authorized service facility for examination, repair, or adjustment.
- The use of accessory attachments not recommended by the appliance manufacturer may cause injuries.
- Do not use outdoors.
- Do not let cord hang over edge of table or counter or touch hot surfaces.
- Do not place on or near a hot gas or electric burner or in a heated oven.
- To disconnect, grasp plug and remove from outlet. Do not pull by the cord.
- Do not use toaster for other than intended use.
- Oversized foods, metal foil packages, or utensils must not be inserted in a toaster, as they may create a fire or risk of electric shock.
- A fire may occur if the toaster is covered or touching flammable material including curtains, draperies, walls and the like, when in operation. Keep this appliance at least one inch away from walls or the rear of a counter. Do not store any item on top of unit when in operation.
- Do not attempt to dislodge food when toaster is plugged in.
- Do not operate in the presence of explosive and/or flammable fumes.
- This product is intended for household use ONLY.

SAVE THESE INSTRUCTIONS

IMPORTANT: Over-toasting of thinly sliced breads could cause the bread to catch fire. Toast thin slices on lower settings.



T270 Shown

1. Self-Adjusting Bread Guides
2. Super-Wide Slots
3. Cool-Touch Exterior
4. Corner Control Lever

5. Light-To-Dark Shade Dial With Pastry Setting
6. Dual-Position Cord Slot (Under Unit)
7. Swing-Open Crumb Tray (Under Unit)

How To Use

QUICK TIPS TO GET STARTED

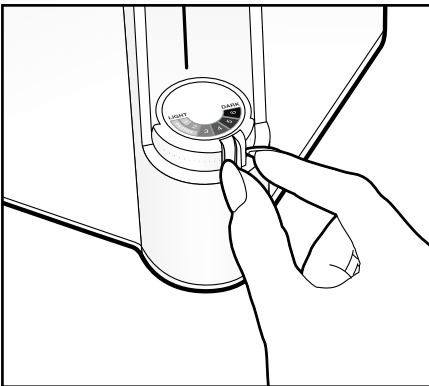


Figure A

Plug the cord into a standard electrical outlet.

Adjust the Shade Dial to the desired setting (Figure A). For first use, set the Dial to the middle position. Readjust for lighter or darker toasting. All breads, pastries, and other toaster foods (frozen waffles, bagels, etc.) do not toast alike. Thin, dry bread requires a lighter setting than thicker, fresh bread. Refer to the *Toasting Guide* on pg. 5 for recommended settings.

This toaster is equipped with an Electronic Toast Control — a built-in

timer that gives you consistent, even-colored toasting even with multiple toasting cycles. You don't have to wait for the toaster to cool down between toasting cycles to get good results.

Place the bread slices or toaster foods in the slots. Press the Corner Control Lever down until it clicks. The Lever will not go all the way down to the Dial settings. There will be approximately 1" between the depressed Lever and the Shade Dial. The Self-Adjusting Bread Guides will automatically adjust to hold thick or thin slices in place. The toasted items will pop up automatically at the end of the cycle. You may use either slot if you are toasting only one slice.

NOTE: If food becomes wedged in the toast slot, unplug the cord from the outlet. Move the Control Lever up and down a few times to raise "jammed" food. To avoid a shock hazard, never use metal utensils to free food.

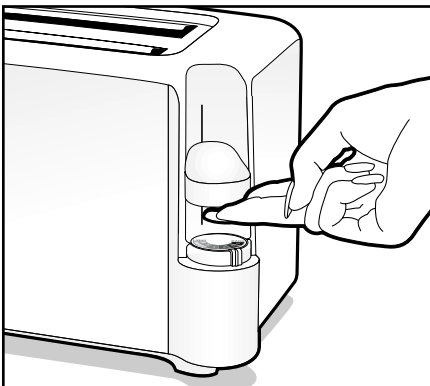
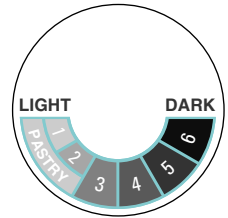


Figure B

CANCEL TOASTING FEATURE

To interrupt the toasting cycle at any time during its operation, simply slide your finger between the Shade Dial and the Corner Control Lever and lift the Control Lever up (Figure B).

Toasting Guide



Electronic Toast Control Guide

Pastry Light = 1-2 Medium = 3-4 Dark = 5-6

TOASTER FOOD	SUGGESTED SETTING
<p>Everyday Breads</p> <ol style="list-style-type: none"> 1. White Bread, soft type 2. Wheat Bread 3. Rye Bread 4. English Muffins 5. Fresh Bagels 6. Frozen Bagels, thawed 	<p>3 - 4 4 4 5 5 3 - 4</p>
<p>Specialty Breads/Toaster Foods</p> <ol style="list-style-type: none"> 1. Variety Bread, hand-sliced, 1" thick 2. Italian Bread, 1" thick 3. Toaster Corn Muffins 4. Pop Tarts 5. Texas or Deli French Toast, 1" thick 	<p>3 - 4 3 3 Pastry/2 4</p>
<p>Frozen Toaster Favorites</p> <ol style="list-style-type: none"> 1. French Toast 2. Waffles 3. Toaster Hash Browns 4. Toaster Breakfast Pastry 	<p>4 (2 cycles) 4 (1 cycle) 6 (2 cycles) Pastry/2 (2 cycles)</p>

Care and Cleaning Guide

Always unplug the cord from the electrical outlet and allow the toaster to cool before cleaning.

DO NOT IMMERSE THE TOASTER IN WATER.

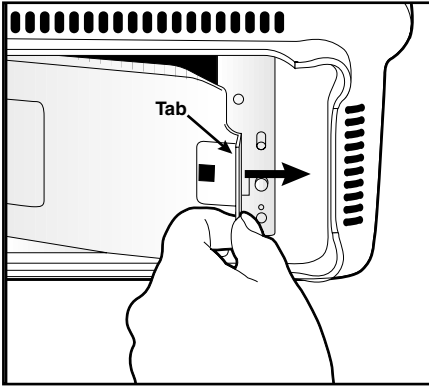


Figure C

SWING-OPEN CRUMB TRAY

Unplug the toaster and allow it to cool. Turn the toaster on its side and hold over a sink or trash can. Pull the Tab on the Crumb Tray forward and swing the tray open (Figure C). Wipe the Crumb Tray with a slightly damp cloth or sponge. Dry the Crumb Tray completely before closing and latching. It's important to clean out the crumbs to avoid buildup. Frequency depends on how often you use your toaster. If you use it every day, more than once a day, it's a good idea to clean out the crumbs at least once a week.

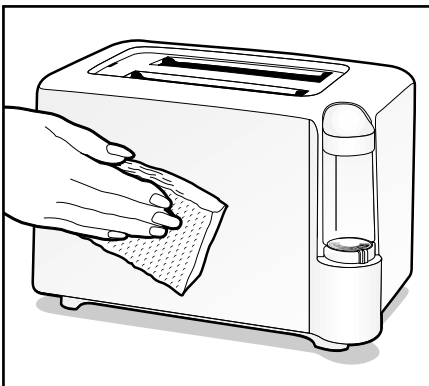


Figure D

CLEANING THE OUTSIDE SURFACES

Wipe the cool-touch exterior surface with a slightly damp cloth or sponge (Figure D). Dry thoroughly. **DO NOT USE STRONG CLEANERS OR ABRASIVES THAT WILL SCRATCH THE EXTERIOR SURFACE. NEVER SPRAY CLEANERS DIRECTLY ONTO THE TOASTER.**

ELECTRICAL CORD AND PLUG

The cord length of this appliance was selected to reduce safety hazards that may occur with a longer cord. If more cord length is needed, an extension cord may be used. It should be rated not less than 15 amperes, 120 volts and should have Underwriters Laboratories listing. A properly rated extension cord may be purchased from a Black & Decker (U.S.) Inc., Household Appliance Company-Owned or Authorized Service Center (see pgs. 10 & 11 for a complete listing of Black & Decker Company-Owned Service Centers). When using a longer cord, be sure that it does not drape over a working area or dangle where it could be pulled on or tripped over.

Handle cord carefully; avoid jerking or straining it at outlet and appliance connections.

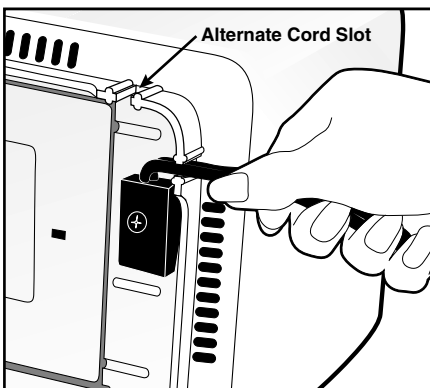


Figure E

DUAL-POSITION CORD SLOT

Clip the cord into either cord slot at the bottom of the toaster to hold it conveniently out of the way in either direction (Figure E).

Need Help?

QUESTIONS & ANSWERS

1. Can I interrupt the toast cycle once it's started?

Yes. Just lift the Corner Control Lever and the cycle will stop.

2. Which slot should I use if I'm only toasting one slice?

Because of the Electronic Toast Control Timer, either slot can be used.

3. How often should I clean the crumbs from the bottom of the toaster?

It's important to clean out the crumbs frequently to avoid buildup. Frequency depends on how often you use your toaster. If you use it every day, more than once a day, it's a good idea to clean out the crumbs at least once a week. Follow the cleaning instructions on pg. 6.

4. Can I toast thick, homemade slices?

Yes. The super-wide slots in this toaster allow you to toast slices up to 1-inch thick. Because the bread guides automatically adjust to hold thick or thin slices in place, you can toast 1/2", 3/4" or 1" slices with good results in this toaster.

5. Sometimes a frozen toaster food, like French toast, isn't heated in one toasting cycle. Should I use a higher toast setting?

Most frozen toaster foods require two toasting cycles at the recommended setting to be heated inside and crisp on the outside. Using a higher setting than recommended may heat the inside of the food faster, but often causes over-browning on the outside. For best results with frozen toaster foods, use freshly bought items. If frozen foods have built-up ice crystals, brush them off before toasting. Frozen waffles, however, generally require only one toasting cycle. Check the "Frozen Toaster Favorites" section of the *Toasting Guide* on pg. 5 for other recommended toast settings and cycles.

SERVICE OR REPAIR

Service, if necessary, must be performed by a Black & Decker (U.S.) Inc., Household Appliance Company-Owned or Authorized Service Center. The Service Center nearest you can be found in the yellow pages of your phone book under "Appliances-Small Repairing." For your convenience, a complete listing of our Company-Owned Service Centers can be found on pages 10 & 11.

Before shipping your toaster, be sure it is cleaned of crumbs and debris. If mailing or shipping, pack it carefully in its original carton or any sturdy carton with enough packing material to prevent damage. Include a note describing the problem to our Service Center and be sure to give your return address. We also suggest that you insure the package for your protection.

Consumer-replaceable parts and accessories are also available at Black & Decker (U.S.) Inc., Household Appliance Company-Owned or Authorized Service Centers.

POLARIZED PLUG

This appliance has a polarized plug—one blade is wider than the other. To reduce the risk of electric shock, this plug will fit into a polarized outlet only one way. If the plug does not fit fully into the outlet, reverse it. If it still does not fit, contact a qualified electrician. Do not attempt to defeat this safety feature by modifying the plug in any way.

BLACK AND DECKER COMPANY-OWNED SERVICE CENTERS

ALABAMA

BIRMINGHAM — 2412 Green Springs, Hwy., 35209
205-942-0538
MOBILE — 3831 Airport Blvd., 36608 205-343-6624

ALASKA

ANCHORAGE — 910 West International Airport Rd., 99518
907-563-4664

ARIZONA

MESA — 535 South Dobson Rd., Suite 7, 85202
602-461-1074
PHOENIX — 4501 N. 7th Ave., 85013 602-279-6414
TUCSON — 4845 E. Speedway Blvd., 85712 602-323-3388

ARKANSAS

LITTLE ROCK — 519 W. Seventh St., 72201 501-372-3040

CALIFORNIA

ANAHEIM — 540 South State College Blvd., 92806
714-772-4050
CHULA VISTA — 309 Broadway, 91911 619-420-6350
CONCORD — 1500 Monument Blvd., #C2, 94520
510-682-4880
FRESNO — 5412 North Blackstone Ave., 93710 209-435-0810
LONG BEACH — 2011 South St., 90805 310-422-5825
LOS ANGELES — 4820 South Eastern Ave., Suite "L" 90040
213-720-1834
RIVERSIDE — 6215 Magnolia Ave., Suite B, 92506
714-787-9700
SACRAMENTO — 2033 Fulton Ave., 95825 916-972-9090
SAN DIEGO — 9270 Clairmont Mesa Blvd., 92123
619-279-2011
SAN JOSE — 1185 South Bascom Ave., 95128 408-293-7350
SAN LEANDRO — 15206 East 14th St., 94578 510-276-1610
VAN NUYS — 14920 Victory Blvd., 91411 818-787-5531

COLORADO

DENVER — 1171 South Federal Blvd., Box 19220, 80219
303-922-8325

CONNECTICUT

HARTFORD — 662 Silas Deane Hwy., 06109 203-563-5800
ORANGE — 481 Boston Post Rd., 06477 203-795-3583

DISTRICT OF COLUMBIA

COLMAR MANOR, MD — 4153 Bladensburg Rd., 20710
301-779-3808
FALLS CHURCH, VA — 344 W. Broad St., 22046
703-533-7313

FLORIDA

FT. LAUDERDALE — 799 East Oakland Pk. Blvd., 33334
305-566-5102
FT. MYERS — 5224 Bank St., 33907 813-278-1188
JACKSONVILLE — 920 Cassat Ave., 32205 904-781-2253
MIAMI — 13345 North West Seventh Ave., 33168
305-681-6658
MIAMI — 12233 South Dixie Hwy., 33156 305-232-9497
ORLANDO — 3807 East Colonial Dr., 32803 407-894-7011
ST. PETERSBURG — 5635 49th St. North, 33709
813-525-0273
TAMPA — 3432 West Kennedy Blvd., 33609 813-872-8317
WEST PALM BEACH — 310 South Military Trail, 33415
407-689-3247

GEORGIA

ATLANTA (South) — 5330 Old National Hwy., 30349 404-762-8844
SMYRNA — 2550 Cobb Parkway South, 30080 404-956-0869
STONE MOUNTAIN — 5723 Memorial Dr., 30083 404-292-4714

HAWAII

HONOLULU — Unit No. 106, Sand Island Access Rd., 96819
808-847-7447

ILLINOIS

CHICAGO (Lincolnwood) — 6710 North Crawford Ave., 60646
708-673-0923
DES PLAINES — 1277 South Elmhurst Rd., 60018 708-364-5220
LISLE — 2950 Ogden Ave., Unit H, 60532 708-717-1075
MOLINE — 4433 23rd Ave., 61265 309-762-3000
OK LAWN — 6343 W. 95th St., 60453 708-423-7212
WAUKEGAN — 31 S. Greenbay Rd., 60085 703-249-4390

INDIANA

EVANSVILLE — 307 First Ave., Crescent Ctr., 47710 812-425-4269
HAMMOND — 7103 Kennedy Ave., 46323 219-845-5100
INDIANAPOLIS (Speedway) — 5999 Crawfordsville Rd., 46224
317-243-8308

IOWA

DES MOINES — 3427 Merle Hay Rd., 50310 515-270-1340

KANSAS

WICHITA — 155 South West St., 67213 316-943-1271

KENTUCKY

LOUISVILLE — 5211 Preston Hwy., 40213 502-968-7100

LOUISIANA

BATON ROUGE — 11859 Florida Blvd., 70815 504-272-8111
HARVEY — 2500 Lapalco Blvd., 70058 504-366-8676
METAIRIE (New Orleans) — 3504 North Causeway Blvd., 70002
504-837-2550
SHREVEPORT — 7710-7714 Jewella Rd., 71108 318-688-1553

MARYLAND

BALTIMORE — 4712 Erdman Ave., 21205 410-485-5550
BALTIMORE — 29-31 Cranbrook Rd., Cockeysville, 21030
410-666-5966
COLMAR MANOR (Wash. D.C.) — 4153 Bladensburg Rd., 20722
301-779-3808
PASADENA — 8220 Ritchie Hwy., 21122 410-647-8456

MASSACHUSETTS

BRIGHTON (Boston) — 12 Market St., 02135 617-782-6264
SEEKONK — 120 Highland Ave., 02771 508-336-6510

MICHIGAN

GRAND RAPIDS — 3040 28th St., SE, 49512 616-949-8331
LANSING — 3205 W. Saginaw Hwy., 48917 517-323-4811
WARREN — 27035 Van Dyke Blvd., 48093 313-756-6711
WESTLAND — 8067 N. Wayne Rd., 48185 313-427-1520

MINNESOTA

BLOOMINGTON — 9517 Lyndale Ave., South, 55420 612-884-9191

MISSOURI

KANSAS CITY — 4324 Main St., 64111 **816-531-0629**
ST. ANN — 3637 North Lindbergh Blvd., 63074
314-739-4661
ST. LOUIS — 12852 Manchester Rd., 63131 **314-821-8740**

NEBRASKA

OMAHA — 4225 South 84th St., 68127 **402-592-5666**

NEVADA

LAS VEGAS — 3411 East Charleston Blvd., 89104
702-641-6555

NEW JERSEY

CHERRY HILL — 1444 East Marlton Pike (Rt. 70), 08034
609-429-2822
LITTLE FALLS — 1189 U.S. Hwy. 46, 07424 **201-256-9373**
SCOTCH PLAINS — 2520 Route #22 East, 07076 **908-233-5665**

NEW MEXICO

ALBUQUERQUE — 5617 Menaul Blvd., N.E., 87110
505-884-1002

NEW YORK

ALBANY (Latham) — 836 Troy-Schenectady Rd., 12110
518-785-1867
BUFFALO — 881 West Delavan Ave., 14209 **716-884-6220**
CENTEREACH L.I. — 2061-63 Middle Country Rd., 11720
516-737-4706
NEW YORK (Elmhurst) — 77-20 Queens Blvd., 11373
718-335-1042
NEW YORK (Manhattan) — 50 West 23rd St., 10010
212-929-6450
NEW YORK (Westbury, L.I.) — 1061 Old Country Rd., 11590
516-997-6140
ROCHESTER — 2969 W. Henrietta Rd., 14623 **716-424-1310**
SYRACUSE — 3485 Erie Blvd., East, 13214 **315-446-3086**

NORTH CAROLINA

CHARLOTTE — 3007 East Independence Blvd., 28205
704-374-1779
GREENSBORO — 3716 High Point Rd., 27407 **919-852-1300**
RALEIGH — 2930 Capital Blvd., 27604 **919-878-0357**

OHIO

CINCINNATI — 2310 East Sharon Rd., 45241 **513-772-3111**
COLUMBUS — 3975 East Livingston Ave., 43227
614-237-0461
DAYTON — 2898 South Dixie Drive, 45409 **513-298-1951**
MAYFIELD HEIGHTS — 5881 Mayfield Rd., 44124
216-449-2770
PARMA HEIGHTS (Cleveland) — 6483 Pearl Rd., 44130
216-842-9100
TOLEDO — 3231 Dorr St., 43607 **419-531-8921**

OKLAHOMA

OKLAHOMA CITY — 1318 Linwood Blvd., 73106
405-232-7515
TULSA — 3120 S. Sheridan Rd, 74145 **918-622-5666**

OREGON

PORTLAND — 1640 NW Johnson St., 97209
503-228-8631

PENNSYLVANIA

ALLENTOWN (Whitehall) — 2242 MacArthur Rd., 18052
215-435-9544
EVANS CITY — Cranberry Town Center Plaza, 20808 Rt. 19 N., 16033
412-779-9600
HARRISBURG — 6080 Allentown Blvd., 17112 **717-545-0651**
LANCASTER — 118 Keller Ave., 17601 **717-393-5251**
PHILADELPHIA — 9977-81 Bustleton Ave., 19115
215-464-7771
PHILADELPHIA — 333 North 20th St., 19103 **215-564-5520**
PITTSBURGH — 5437 Baum Blvd., 15232 **412-362-2700**
WILKES-BARRE — 759 Kidder St., 18702 **717-824-5704**

PUERTO RICO

GUAYNABO — "C" Street # 14, Rexco Industrial Park, 00922-1924
809-783-3535

RHODE ISLAND

SEEKONK, MA — 120 Highland Ave., 02771 **508-336-6510**

SOUTH CAROLINA

GREENVILLE — 1557 Laurens Rd., 29607 **803-232-3038**

TENNESSEE

CHATTANOOGA — Perimeter Place Shopping Ctr., Sp. E,
6231 Perimeter Dr., 37421 **615-894-5957**
KNOXVILLE — 4118 North Broadway, 37917 **615-688-0921**
MEMPHIS — 1085 East Brooks Rd., 38116 **901-332-3444**
NASHVILLE — 4811 Nolensville Rd., 37211 **615-833-8277**

TEXAS

AMARILLO — 3008 West 6th Ave., 79106 **806-373-1531**
AUSTIN — 6549 Burnet Rd., 78757 **512-459-1133**
DALLAS — 2257 Royal Lane, 75229 **214-620-8655**
EL PASO — 6822 Gateway East, 79915 **915-778-9769**
FORT WORTH — 721 North Beach St., 76111 **817-831-3828**
GARLAND — 78 West Centerville Rd., 75043 **214-686-9302**
HOUSTON — 536 East Tidwell Rd., 77022 **713-692-7111**
SAN ANTONIO — 500 Culebra Ave., 78201 **210-732-1221**
WEBSTER — 100 East Nasa Road One, Ste. 75, 77598 **713-338-4556**

UTAH

SALT LAKE CITY — 1541 S. Third West St., 84115 **801-486-5828**

VIRGINIA

FALLS CHURCH — 344 W. Broad St., 22046 **703-533-7313**
HAMPTON — 3416 W. Mercury Blvd., 23666 **804-826-9382**
NORFOLK — 7631 Sewells Point Rd., 23513 **804-480-3333**
RICHMOND — 1424 Chamberlayne Ave., 23222 **804-649-9245**

WASHINGTON

SEATTLE — 421 S. Michigan, 98108 **206-763-2010**
SPOKANE — N. 7011 Division St., 99208 **509-467-8190**
TACOMA — 2602 S. 38th St., 98409 **206-473-6040**

WEST VIRGINIA

CHARLESTON — 1638 Sixth Ave., 25312 **304-343-0289**

WISCONSIN

MILWAUKEE (Wauwatosa) — 10424 W. Bluemound Rd., 53226
414-453-4240

REV: 9/94

FULL TWO-YEAR WARRANTY

Black & Decker (U.S.) Inc. warrants this product against any defects that are due to faulty material or workmanship for a two-year period after the original date of consumer purchase or receipt as a gift. This warranty does not include damage to the product resulting from accident or misuse.

If the product should become defective within the warranty period, we will repair it or elect to replace it free of charge. We will return your product, transportation charges prepaid, provided it is delivered prepaid to any Black & Decker (U.S.) Inc., Household Appliance Company-Owned or Authorized Service Center.

This warranty gives you specific legal rights, and you may also have other rights which vary from state to state.

Answers to any questions regarding warranty or service locations may be obtained by calling toll free, 1-800-231-9786 or by writing:

Consumer Assistance &
Information
Black & Decker (U.S.) Inc.
626 Hanover Pike
Hampstead, MD 21074-0618



The Black & Decker logo, featuring a stylized diamond shape with diagonal lines to the left of the brand name "BLACK & DECKER" in a bold, sans-serif font with a registered trademark symbol.

Listed by Underwriters Laboratories, Inc.
Copyright © 1994 Black & Decker
Pub No. 168631-13-RV00
Printed in China

Free Manuals Download Website

<http://myh66.com>

<http://usermanuals.us>

<http://www.somanuals.com>

<http://www.4manuals.cc>

<http://www.manual-lib.com>

<http://www.404manual.com>

<http://www.luxmanual.com>

<http://aubethermostatmanual.com>

Golf course search by state

<http://golfingnear.com>

Email search by domain

<http://emailbydomain.com>

Auto manuals search

<http://auto.somanuals.com>

TV manuals search

<http://tv.somanuals.com>