



**SPORTSPOT®**  
**1,000,000 SPOTLIGHT**  
**INSTRUCTION MANUAL**



Catalog Number CSL100MV

Thank you for choosing Black & Decker!  
Go to [www.BlackandDecker.com/NewOwner](http://www.BlackandDecker.com/NewOwner)  
to register your new product.

**BEFORE RETURNING THIS PRODUCT  
FOR ANY REASON PLEASE CALL**

**1-800-544-6986**

BEFORE YOU CALL, HAVE THE CATALOG No, AND DATE CODE  
AVAILABLE. IN MOST CASES, A **BLACK & DECKER** REPRESENTATIVE  
CAN RESOLVE THE PROBLEM OVER THE PHONE. IF YOU HAVE A  
SUGGESTION OR COMMENT, GIVE US A CALL. YOUR FEEDBACK IS  
VITAL TO BLACK & DECKER.

**TO REDUCE THE RISK OF INJURY, THE USER MUST READ  
AND UNDERSTAND THE INSTRUCTION MANUAL.**

**SAVE THIS MANUAL FOR FUTURE REFERENCE.**

Cat. # CSL100MV  
June 2007

Form # 90519934  
Copyright © 2007 Black & Decker

Printed in China

**⚠ GENERAL SAFETY WARNINGS AND INSTRUCTIONS FOR ALL APPLIANCES**  
**READ ALL INSTRUCTIONS**

**⚠ WARNING:** Read and understand all instructions before operating product. Failure to follow all instructions listed below may result in electric shock, fire and/or serious injury.

- **AVOID DANGEROUS ENVIRONMENTS.** Don't use appliances in damp or wet locations. Don't use appliances in the rain.
- **KEEP CHILDREN AWAY.** All visitors should be kept at a distance from work area.
- **STORE IDLE APPLIANCES INDOORS.** When not in use, appliances should be stored indoors in dry, and high or locked-up place – out of reach of children.
- **DON'T FORCE APPLIANCE.** It will do the job better and with less likelihood of a risk of injury at the rate for which it was designed.
- **USE RIGHT APPLIANCE.** Do not use the appliance for any job except that for which it is intended.
- **DRESS PROPERLY.** Do not wear loose clothing or jewelry. They can be caught in moving parts. Rubber gloves and substantial, non-skid footwear are recommended when working outdoors. Wear protective hair covering to contain long hair.
- **USE SAFETY GLASSES AND OTHER SAFETY EQUIPMENT.** Use safety goggles or safety glasses with side shields, complying with applicable safety standards and, when needed, a face shield. Also use face or dust mask if operation is dusty. This applies to all persons in the work area. Also use a hard hat, hearing protection, gloves, safety shoes and dust collection systems when specified or required. Safety glasses or the like are available at extra cost at your local dealer or Black & Decker Service Center.
- **DON'T ABUSE CORD.** Never carry appliance by cord or yank it to disconnect from receptacle. Keep cord from heat, oil, and sharp edges.
- **DON'T OVERREACH.** Keep proper footing and balance at all times.
- **DISCONNECT APPLIANCES.** Disconnect the appliance from the power supply when not in use, before servicing, and when changing accessories such as blades and the like.
- **AVOID UNINTENTIONAL STARTING.** Don't carry plugged-in appliance with finger on switch. Be sure switch is off when plugging in.
- **USE OF ACCESSORIES AND ATTACHMENTS.** The use of any accessory or attachment not recommended for use with this appliance could be hazardous. Note: Refer to the accessory section of this manual for further details.
- **STAY ALERT.** Watch what you are doing. Use common sense. Do not operate tool when you are tired.
- **CHECK DAMAGED PARTS.** Before further use of the tool, a guard or other part that is damaged should be carefully checked to determine that it will operate properly and perform its intended function. Check for alignment of moving parts, binding of moving parts, breakage of parts, mounting, and any other conditions that may affect its operation. A guard or other part that is damaged should be properly repaired or replaced by an authorized service center unless otherwise indicated elsewhere in this instruction manual. Have defective switches replaced by authorized service center. Do not use tool if switch does not turn it on and off.
- **DO NOT OPERATE** portable electric tools near flammable liquids or in gaseous or explosive atmospheres. Certain components in these tools normally spark, and the sparks might ignite fumes.

## SAFETY GUIDELINES / DEFINITIONS

**⚠ DANGER:** Indicates an imminently hazardous situation which, if not avoided, will result in death or serious injury.

**⚠ WARNING:** Indicates a potentially hazardous situation which, if not avoided, could result in death or serious injury.

**⚠ CAUTION:** Indicates a potentially hazardous situation which, if not avoided, may result in minor or moderate injury.

**CAUTION:** Used without the safety alert symbol indicates potentially hazardous situation which, if not avoided, may result in property damage.

**⚠ WARNING: RISK OF UNSAFE OPERATION:** When using tools or equipment, basic safety precautions should always be followed to reduce the risk of personal injury. Improper operation, maintenance or modification of tools or equipment could result in serious injury and property damage. There are certain applications for which tools and equipment are designed. Black & Decker strongly recommends that this product NOT be modified and/or used for any application other than for which it was designed. Read and understand all warnings and operating instructions before using any tool or equipment.

## IMPORTANT SAFETY INSTRUCTIONS

**⚠ WARNING:** This product or its power cord contains lead, a chemical known to the State of California to cause cancer and birth defect or other reproductive harm. Wash hands after handling.

**⚠ WARNING: TO REDUCE THE RISK OF ELECTRIC SHOCK:**

- Do not operate unit with damaged cord or plug; or if the unit has received a sharp blow, been dropped, or otherwise damaged in any way.
- Do not open body casing. There are no user-serviceable parts inside; take it to a qualified service technician when service or repair is required. Incorrect reassembly may result in a risk of electric shock or fire, and will void warranty.

**⚠ WARNING: FIRE HAZARD:** Never contact combustible material to the lens and never tape the switch in the ON position.

**⚠ CAUTION: TO REDUCE THE RISK OF INJURY OR PROPERTY DAMAGE:**

- All halogen lights give off heat:
  - Do not plug in a power supply without the bulb lens and cover in place.
  - Do not touch lens while operating.
  - Keep combustibles away from spotlight lens. Extreme heat can cause fires.
  - Never place the light face-down on any surface when lit.
- DO NOT expose this unit to extremely high temperatures.
- Never look directly into the light or shine the light into another person's eyes.
- Keep sharp objects away from lens – it is glass and can break.

- Do not immerse spotlight in water.
- Do not drop or throw spotlight. It contains glass and a sealed lead acid battery.
- Only replace bulb with type indicated in specifications (H3, 12 volt quartz halogen).
- Do not crush, cut, pull or expose charging adapter cords to extreme heat.
- Position charging adapter cords so they do not become entangled or become a safety hazard. Keep cords away from sharp edges.
- Use in a dry location only.
- Do not operate this unit with a missing or damaged guard or glass lamp containment barrier.
- Do not use any accessory not supplied or recommended by the manufacturer.
- To reduce risk of damage to electric plug and cord, pull by plug rather than cord when disconnecting from the 12 volt DC outlet.
- Do not attempt to use the unit if the 12 volt DC plug or cord are damaged – return the unit to manufacturer for repair.
- Read And Understand This Instruction Manual Before Using This Unit.

## SAVE THESE INSTRUCTIONS

**THIS MANUAL CONTAINS IMPORTANT SAFETY AND OPERATING INSTRUCTIONS FOR THE SPORTSPOT® 1,000,000 SPOTLIGHT MODEL CSL100MV.**

**⚠ WARNING: TO REDUCE THE RISK OF INJURY:**

- Follow these instructions and those published by the manufacturer of any equipment you intend to use with this unit. Review cautionary markings on these products.

### **INTRODUCTION**

Thank you for choosing the *CSL100MV SportSpot® 1,000,000 Spotlight*. Please read this manual carefully before use to ensure optimum performance and avoid damage to the unit.

### **FEATURES**

- A compact, powerful quartz halogen spotlight
- Powerful quartz halogen bulb delivers a bright, tight beam
- Computer-designed parabolic reflector
- Compact, lightweight design
- Pistol grip handle design fits comfortably in your hand
- On/Off spring-loaded power switch delivers an instant beam
- Can be used with Black & Decker® jump starters for portability
- Hanging hook for convenient storage

### Controls and Indicators



### OPERATING INSTRUCTIONS

1. Insert the **SportSpot**® spotlight 12 volt DC plug into the accessory socket of your vehicle or a portable 12 volt power source, such as a jump starter.
2. To turn on the **SportSpot**® slide the spring-loaded power switch to the ON position (up).
3. To turn off the **SportSpot**®, release the spring-loaded power switch. It will slide back to the OFF position (down).

### USING THE HANGING HOOK

The Hanging Hook allows you to position the unit for convenient, hands-free operation.

**⚠ CAUTION: TO REDUCE THE RISK OF PRODUCT DAMAGE:**

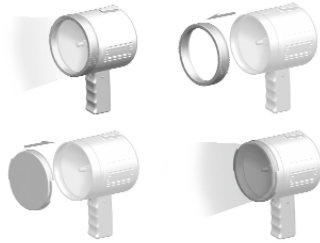
- When Hanging Hook is in use, do not shake light.
- When light is hung by the Hanging Hook, do not shake the light or object that it is hanging from. Do not hang the light from any electrical wires or anything that it is not secure.
- Only use the Hanging Hook for hanging this unit. The Hanging Hook is not intended to support additional weight. Do not attach or hang anything additional to the light or risk of breakage may occur.

### USING THE BLUE-TINTED LENS

To use the included blue-tinted lens:

1. With the unit turned off, remove the protective bezel.
2. Place the blue lens over the face of the unit in the bezel grooves.
3. Operate the unit normally.

Refer to the following illustration for guidance.



**CAUTION:** Do not operate the spotlight without either the original bezel or the blue lens in place over the bulb assembly.

## **CARE AND MAINTENANCE**

This unit is NOT waterproof. Never submerge this unit in water. If it gets dirty, gently clean the outer surfaces with a soft cloth moistened with a mild solution of water and detergent.

### ***Bulb Replacement***

1. Disconnect the **SportSpot®** from the power source.
2. Remove rubber bezel.
3. Loosen and remove six screws that secure spotlight housing.
4. Lift up and set aside the right side of the housing.
5. Remove wire spring and carefully pull out old bulb from the terminal.
6. Replace with a new H3 type, 12 volt, 100 watt bulb, available from an electrical supply house or from Black & Decker (refer to the Service Information section).
7. Reverse the above procedure to re-assemble the spotlight.

**Note:** When handling a new halogen bulb, do not touch the glass portion of the bulb. Natural oils from your hands can cause the bulb to fail. If necessary, clean the bulb with alcohol or a liquid window cleaner.

### ***Fuse Replacement (12 Volt DC Plug)***

If the inverter is overloaded, and the Power/Fault LED is not lit, the internal 8 amp fuse may be blown.

1. Unscrew the flange of the DC plug (counterclockwise).
2. Remove the end contact, flange and fuse.
3. Inspect the fuse to see if it is good or blown.
4. Replace with a new 8 amp fuse, if needed.
5. Carefully reassemble the fuse, end contact and flange. Do not overtighten the flange (clockwise).

**Accessories**

Recommended accessories for use with your tool are available from your local dealer or authorized service center. If you need assistance regarding accessories, please call: 1-800-544-6986.

**⚠ WARNING:** The use of any accessory not recommended for use with this tool could be hazardous.

**Service Information**

All Black & Decker Service Centers are staffed with trained personnel to provide customers with efficient and reliable power tool service. Whether you need technical advice, repair, or genuine factory replacement parts, contact the Black & Decker location nearest you. To find your local service location, refer to the yellow page directory under "Tools—Electric" or call: **1-800-544-6986** or visit [www.blackanddecker.com](http://www.blackanddecker.com).

**FULL ONE-YEAR HOME USE WARRANTY**

Black & Decker (U.S.) Inc. warrants this product for one year against any defects in material or workmanship. The defective product will be replaced or repaired at no charge in either of two ways.

The first, which will result in exchanges only, is to return the product to the retailer from whom it was purchased (provided that the store is a participating retailer). Returns should be made within the time period of the retailer's policy for exchanges (usually 30 to 90 days after the sale). Proof of purchase may be required. Please check with the retailer for their specific return policy regarding returns that are beyond the time set for exchanges.

The second option is to take or send the product (prepaid) to a Black & Decker owned or authorized Service Center for repair or replacement at our option. Proof of purchase may be required. Black & Decker owned and authorized Service Centers are listed under "Tools-Electric" in the yellow pages of the phone directory and on our website [www.blackanddecker.com](http://www.blackanddecker.com).

This warranty does not apply to accessories. This warranty gives you specific legal rights and you may have other rights which vary from state to state or province to province. Should you have any questions, contact the manager of your nearest Black & Decker Service Center. This product is not intended for commercial use.

**FREE WARNING LABEL REPLACEMENT:** If your warning labels become illegible or are missing, call 1-800-544-6986 for a free replacement.

**SPECIFICATIONS**

Spotlight Bulb: H3, 12 volt, 100 watt  
 DC Plug Fuse: 8 amp, 250 VAC

Imported by  
 Black & Decker (U.S.) Inc.,  
 701 E. Joppa Rd.  
 Towson, MD 21286 U.S.A



RD062007  
 6

## Free Manuals Download Website

<http://myh66.com>

<http://usermanuals.us>

<http://www.somanuals.com>

<http://www.4manuals.cc>

<http://www.manual-lib.com>

<http://www.404manual.com>

<http://www.luxmanual.com>

<http://aubethermostatmanual.com>

Golf course search by state

<http://golfingnear.com>

Email search by domain

<http://emailbydomain.com>

Auto manuals search

<http://auto.somanuals.com>

TV manuals search

<http://tv.somanuals.com>