

FEATURED MODEL

157-133-ST **BLANCOMERIDIAN™ Single Lever without side spray in Stainless (Satin Nickel)**

ADDITIONAL MODELS

157-133-CR **Polished Chrome**

FEATURES

- Solid brass body
- Ceramic disc cartridge
- Color coded hot & cold supply lines
- Reversible mounting hardware adapts to thick or thin mounting surfaces
- 2.2 G.P.M. flow rate
- Installation in a 1-3/8" hole

CODE/STANDARDS COMPLIANCE

ASME A112.18.1-2005
 IAPMO Listed

WARRANTY

Blanco America's Kitchen faucets feature a "NO HASSLE" LIMITED LIFETIME WARRANTY to be free of all manufacturing defects under normal use. See our complete warranty for details.

While Blanco America endeavors to provide accurate information, all dimensions are nominal, cannot be guaranteed, and are subject to change or cancellation. Blanco America assumes no responsibility for use of superseded or voided specifications.

PRODUCT SPECIFICATION

Kitchen faucet to include single lever handle with solid brass body and ceramic disc cartridge. Faucet dimensions to be as follows: Reach: 9"; Spout Height: 7-3/16". Hot and cold supply lines to be color coded. Reversible mounting hardware to adapt to thick or thin mounting surfaces. Kitchen faucet to be BLANCOMERIDIAN™ Single Lever, Model 157-133-_____ in _____ finish.

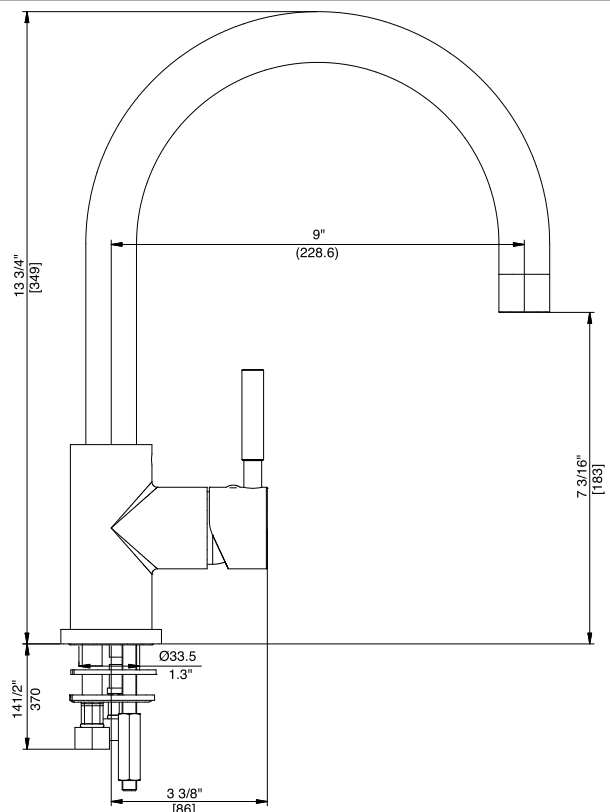
- Stainless (Satin Nickel) 157-133-ST
- Polished Chrome 157-133-CR



MODEL 157-133

NOMINAL DIMENSIONS

MODEL	REACH	SPOUT HEIGHT	FAUCET HEIGHT
157-133	9	7-3/16	13-3/4



See next page for exploded parts drawing and parts list.

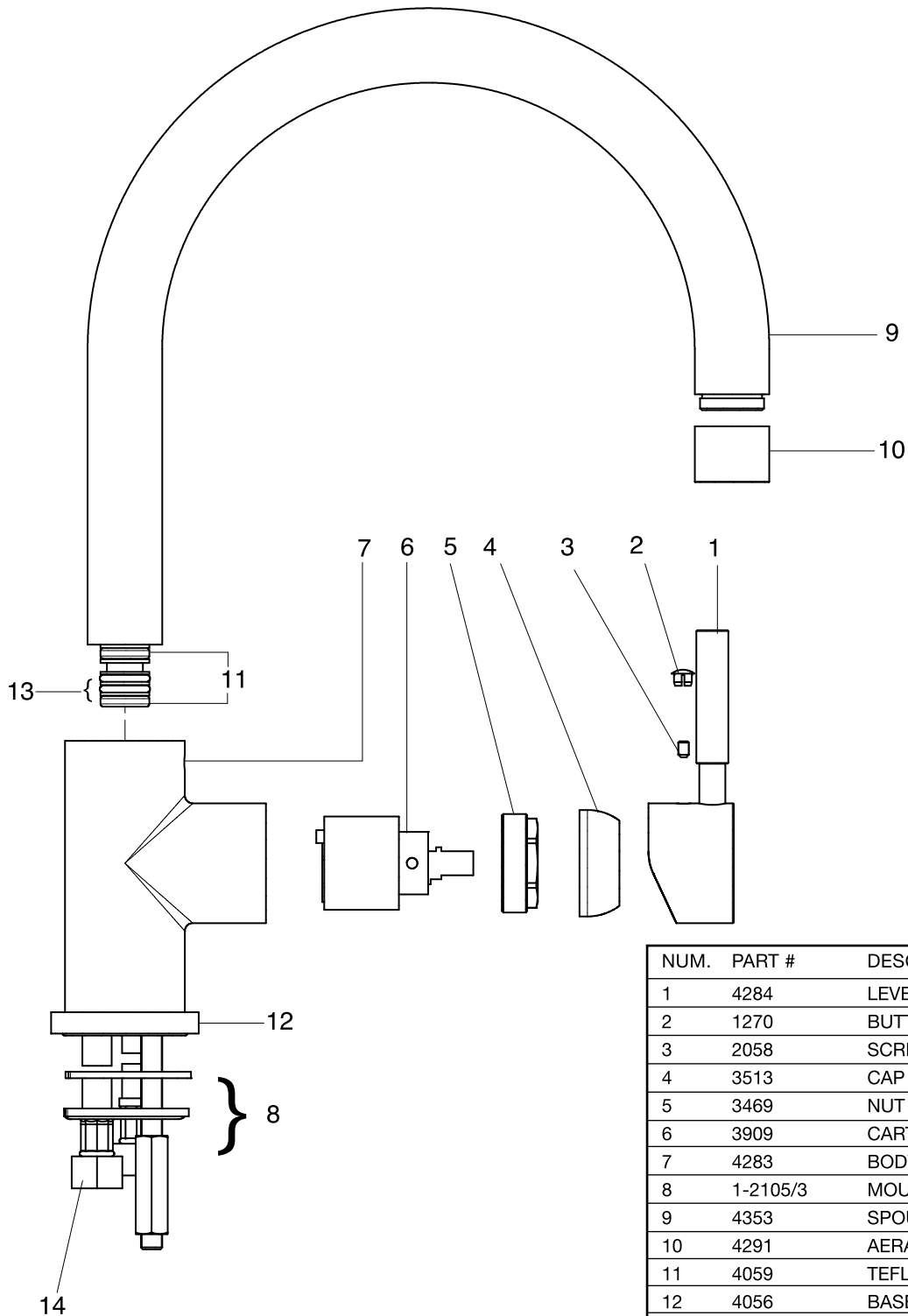
JOB INFORMATION

Job Name: _____
 Contact: _____
 Date Specified: _____
 Specifier: _____
 Contractor: _____

BLANCO AMERICA
800.451.5782
www.blancoamerica.com

BLANCOMERIDIAN™ SINGLE LEVER

MODEL 157-133



NUM.	PART #	DESCRIPTION
1	4284	LEVER
2	1270	BUTTON
3	2058	SCREW
4	3513	CAP
5	3469	NUT
6	3909	CARTRIDGE
7	4283	BODY
8	1-2105/3	MOUNTING NUT ASSY
9	4353	SPOUT
10	4291	AERATOR
11	4059	TEFLON RING
12	4056	BASE
13	01102621310	O'RING 2.62X13.1
14	2350	INLET HOSES

Free Manuals Download Website

<http://myh66.com>

<http://usermanuals.us>

<http://www.somanuals.com>

<http://www.4manuals.cc>

<http://www.manual-lib.com>

<http://www.404manual.com>

<http://www.luxmanual.com>

<http://aubethermostatmanual.com>

Golf course search by state

<http://golfingnear.com>

Email search by domain

<http://emailbydomain.com>

Auto manuals search

<http://auto.somanuals.com>

TV manuals search

<http://tv.somanuals.com>