

### FEATURED MODEL

**157-143-CR** BLANCOTERRA™ Bridge with mixed side spray

### ADDITIONAL MODELS

**157-143-ST** Stainless  
**157-143-ORB** Oil Rubbed Bronze

### FEATURES

- Solid brass body and all metal side spray
- Ceramic disc cartridge
- Color coded hot & cold supply lines
- Reversible mounting hardware adapts to thick or thin mounting surfaces
- 2.2 G.P.M. flow rate
- Installation in a 1-3/8" hole, side spray in 1-3/8" hole

### CODE/STANDARDS COMPLIANCE

ASME A112.18.1-2005  
 IAPMO Listed

### WARRANTY

Blanco America's Kitchen faucets in Chrome and Stainless feature a **LIMITED LIFETIME WARRANTY** to be free of all manufacturing defects under normal use. **5-YEAR LIMITED LIFETIME WARRANTY** on Oil Rubbed Bronze. See our complete warranty for details.

While Blanco America endeavors to provide accurate information, all dimensions are nominal, cannot be guaranteed, and are subject to change or cancellation. Blanco America assumes no responsibility for use of superseded or voided specifications.

### PRODUCT SPECIFICATION

Kitchen faucet to include bridge design with lever handles, solid brass body, ceramic disc cartridge and mixed all metal side spray. Faucet dimensions to be as follows: Reach: 9-11/16"; Spout Height: 7". Hot and cold supply lines to be color coded. Reversible mounting hardware to adapt to thick or thin mounting surfaces. Kitchen faucet to be BLANCOTERRA™ Bridge with mixed side spray, Model 157-143-\_\_\_\_\_ in \_\_\_\_\_ finish.

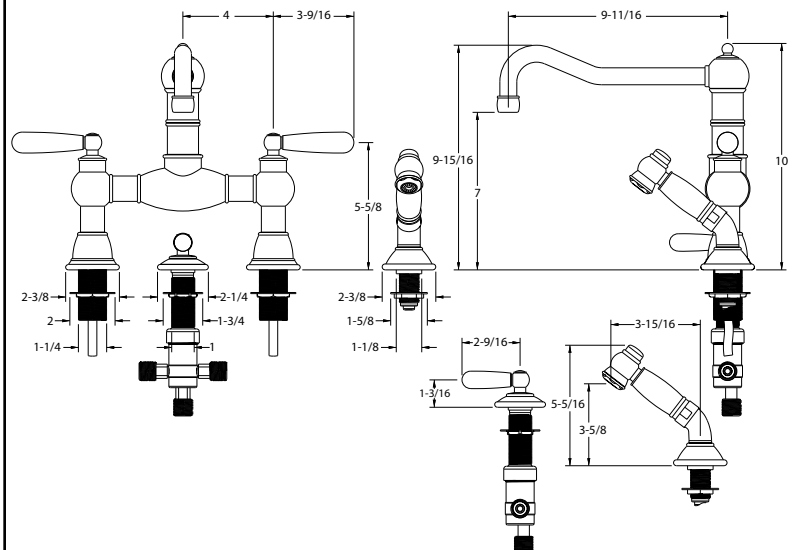
- Polished Chrome 157-143-CR
- Stainless 157-143-ST
- Oil Rubbed Bronze 157-143-ORB



MODEL 157-143

### NOMINAL DIMENSIONS

MODEL	REACH	SPOUT HEIGHT	FAUCET HEIGHT
157-143	9-11/16	7	10



See next page for exploded parts drawing and parts list.

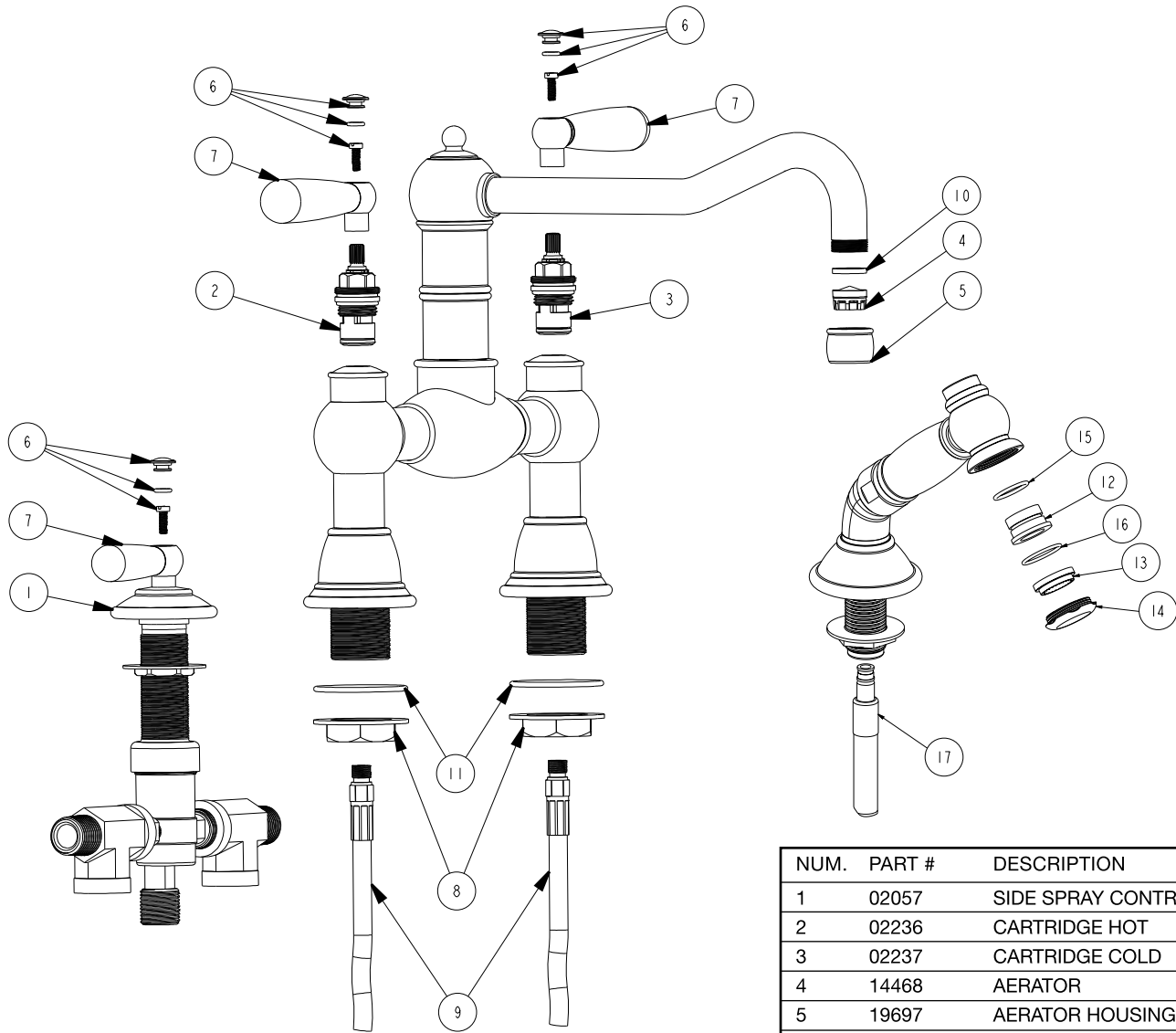
### JOB INFORMATION

Job Name: \_\_\_\_\_  
 Contact: \_\_\_\_\_  
 Date Specified: \_\_\_\_\_  
 Specifier: \_\_\_\_\_  
 Contractor: \_\_\_\_\_

**BLANCO AMERICA**  
**800.451.5782**  
**www.blancoamerica.com**

### BLANCOTERRA™ BRIDGE

### MODEL 157-143



NUM.	PART #	DESCRIPTION
1	02057	SIDE SPRAY CONTROL
2	02236	CARTRIDGE HOT
3	02237	CARTRIDGE COLD
4	14468	AERATOR
5	19697	AERATOR HOUSING
6	19748	CAP, O-RING & SCREW
7	19750	LEVER
8	20083	NUT
9	20190	FLEX HOSE
10	91390	RUBBER WASHER
11	91794	O-RING
12	20076	SEAL
13	20077	NOZZLE
14	20078	CAP
15	91922	O-RING, SEAL
16	91923	O-RING, CAP
17	96007	FLEX HOSE

## Free Manuals Download Website

<http://myh66.com>

<http://usermanuals.us>

<http://www.somanuals.com>

<http://www.4manuals.cc>

<http://www.manual-lib.com>

<http://www.404manual.com>

<http://www.luxmanual.com>

<http://aubethermostatmanual.com>

Golf course search by state

<http://golfingnear.com>

Email search by domain

<http://emailbydomain.com>

Auto manuals search

<http://auto.somanuals.com>

TV manuals search

<http://tv.somanuals.com>