

FEATURED MODEL

157-150-CR BLANCOBISTRO™ Twin Handle in Polished Chrome

ADDITIONAL MODELS

157-150-ST Stainless (Satin Nickel)

FEATURES

- Solid brass body
- Ceramic disc cartridge
- Color coded hot & cold supply lines
- Reversible mounting hardware adapts to thick or thin mounting surfaces
- 2.2 G.P.M. flow rate
- Installation in a 1-3/8" hole

CODE/STANDARDS COMPLIANCE

ASME A112.18.1-2005

IAPMO Listed

WARRANTY

Blanco America's Bar faucets feature a "NO HASSLE" LIMITED LIFETIME WARRANTY to be free of all manufacturing defects under normal use. See our complete warranty for details.

While Blanco America endeavors to provide accurate information, all dimensions are nominal, cannot be guaranteed, and are subject to change or cancellation. Blanco America assumes no responsibility for use of superseded or voided specifications.

PRODUCT SPECIFICATION

Decorative bar faucet to include two lever handles with solid brass body and ceramic disc cartridge. Faucet dimensions to be as follows: Reach: 5-1/2"; Spout Height: 5-7/8". Hot and cold supply lines to be color coded. Reversible mounting hardware to adapt to thick or thin mounting surfaces. Decorative bar faucet to be BLANCOBISTRO™ Twin Handle, Model 157-150-_____ in _____ finish.

Polished Chrome 157-150-CR

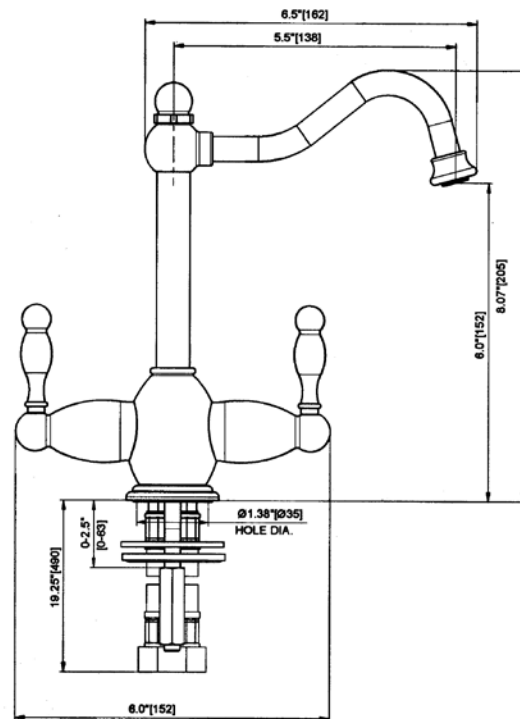
Stainless (Satin Nickel) 157-150-ST



MODEL 157-150

NOMINAL DIMENSIONS

MODEL	REACH	SPOUT HEIGHT	FAUCET HEIGHT
157-150	5-1/2	5-7/8	7-3/4



See next page for exploded parts drawing and parts list.

JOB INFORMATION

Job Name: _____

Contact: _____

Date Specified: _____

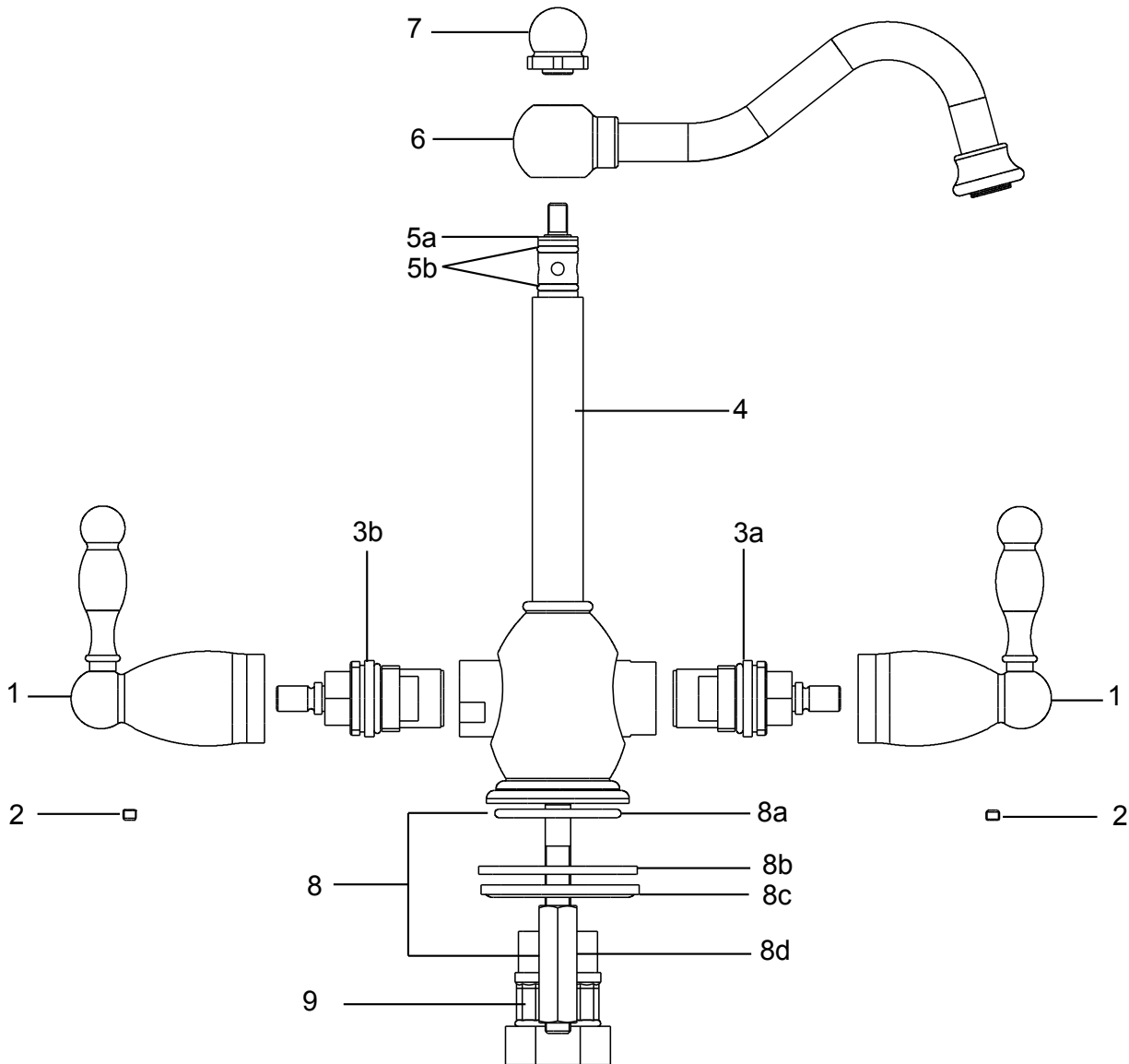
Specifier: _____

Contractor: _____

BLANCO AMERICA
800.451.5782
www.blancoamerica.com

BLANCOBISTRO™ TWIN HANDLE

MODEL 157-150



NUM.	PART #	DESCRIPTION
1	1-1712	HANDLE ASSY
2	3717	SCREW
3A	3614	CERAMIC HEAD WORK (R)
3B	3615	CERAMIC HEAD WORK (L)
4	1-1711	BODY ASSY
5A	1710	TEFLON WASHER
5B	011-0200-0900 9	O-RING

NUM.	PART #	DESCRIPTION
6	1-1704	SPOUT ASSY
7	1702	KNOB
8	1-2105/2	MOUNTING NUT ASSY
8A	011-0262-3459	O-RING
8B	2545/1	RUBBER SEAL
8C	2845N	WASHER
8D	2105/2	NUT
9	2350	INLET HOSES

Free Manuals Download Website

<http://myh66.com>

<http://usermanuals.us>

<http://www.somanuals.com>

<http://www.4manuals.cc>

<http://www.manual-lib.com>

<http://www.404manual.com>

<http://www.luxmanual.com>

<http://aubethermostatmanual.com>

Golf course search by state

<http://golfingnear.com>

Email search by domain

<http://emailbydomain.com>

Auto manuals search

<http://auto.somanuals.com>

TV manuals search

<http://tv.somanuals.com>