

# bonavITA®

BV4000IDV2

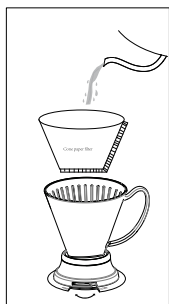
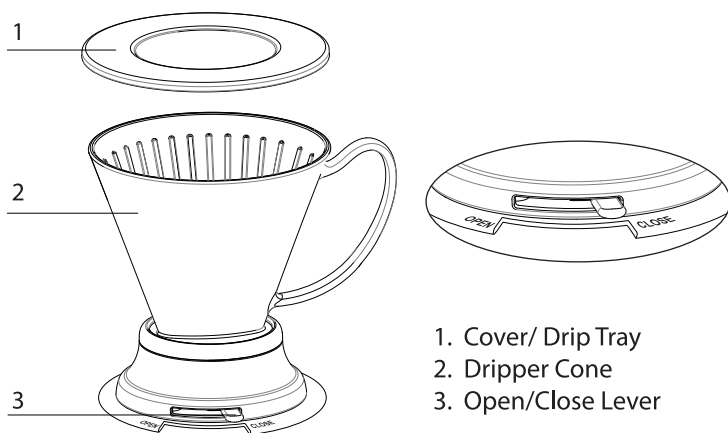
## Wide Base Immersion Dripper

Customer assistant line:

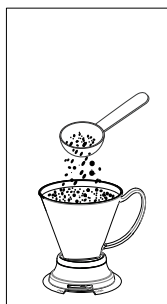
USA 1-855- 664 -1252 or email: customersupport@bonavitaworld.com

Thank you for your purchase of the Immersion Dripper.

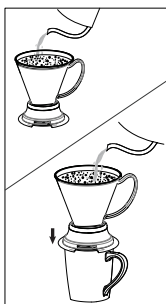
Please read these instructions for our steeping/brewing tips.



Close lever, put the paper filter in and pour a small amount of hot water to wet



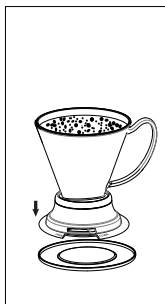
Add desired amount of ground coffee or tea



Put immersion filter on a flat surface or cup and pour hot water



Cover and wait, open lever to release coffee or tea



Close lever and set on cover or countertop

1. **We recommend washing the Immersion Dipper before its first use.**
2. **Follow these steps to brew coffee.**
  - Insert a #4 paper filter into the dripper cone
  - For best results rinse your filter and preheat the dripper cone
    - Insure the lever is in the closed position
    - Pour hot water over the paper filter wetting the paper and filling the dripper cone to ½ full.
    - Position the immersion dripper over the sink or cup and open lever to drain
    - Remember to close lever when draining is complete.
  - Scoop in freshly ground coffee or tea into the dripper cone. The coffee should be a coarse grind for drip coffee. Bonavita recommends using Melitta paper filters.

Coffee	Ground coffee	Hot water volume
8 Oz	15 g	260 ml (9 Oz)
10 Oz	19 g	335 ml (11.3 Oz)
12 Oz	23 g	400 ml (13.5 Oz)

- Insure the lever is in the closed position.
  - Place the immersion dripper on cup or flat surface.
  - Pour hot water over the tea or grounds and cover.
  - Bonavita recommends the Bonavita gooseneck kettle to pour the hot water. To improve consistency, we suggest using a Bonavita scale to measure the weight of your water.
  - After 1 minute open the cover and stir the coffee grounds.
  - Cover and wait an additional 1-2 minutes.
  - Place over cup, carefully open lever and enjoy your beverage.
  - You can increase or decrease the steeping time depending on your taste preference.
  - After brewing is finished, put the cover on countertop and set the immersion dripper on the cover to keep your countertop clean.
3. **Clean the immersion dripper**
    - The immersion dripper is dishwasher safe. Please load in the upper rack of the dishwasher.

## Free Manuals Download Website

<http://myh66.com>

<http://usermanuals.us>

<http://www.somanuals.com>

<http://www.4manuals.cc>

<http://www.manual-lib.com>

<http://www.404manual.com>

<http://www.luxmanual.com>

<http://aubethermostatmanual.com>

Golf course search by state

<http://golfingnear.com>

Email search by domain

<http://emailbydomain.com>

Auto manuals search

<http://auto.somanuals.com>

TV manuals search

<http://tv.somanuals.com>