



RESIDENTIAL GAS REPLACEMENT PARTS LIST

Through-The-Wall TTW1[®] Energy Saver (M-1) Models

Dash Twelve, Thirteen, Fifteen
(-12, -13, -15) Models

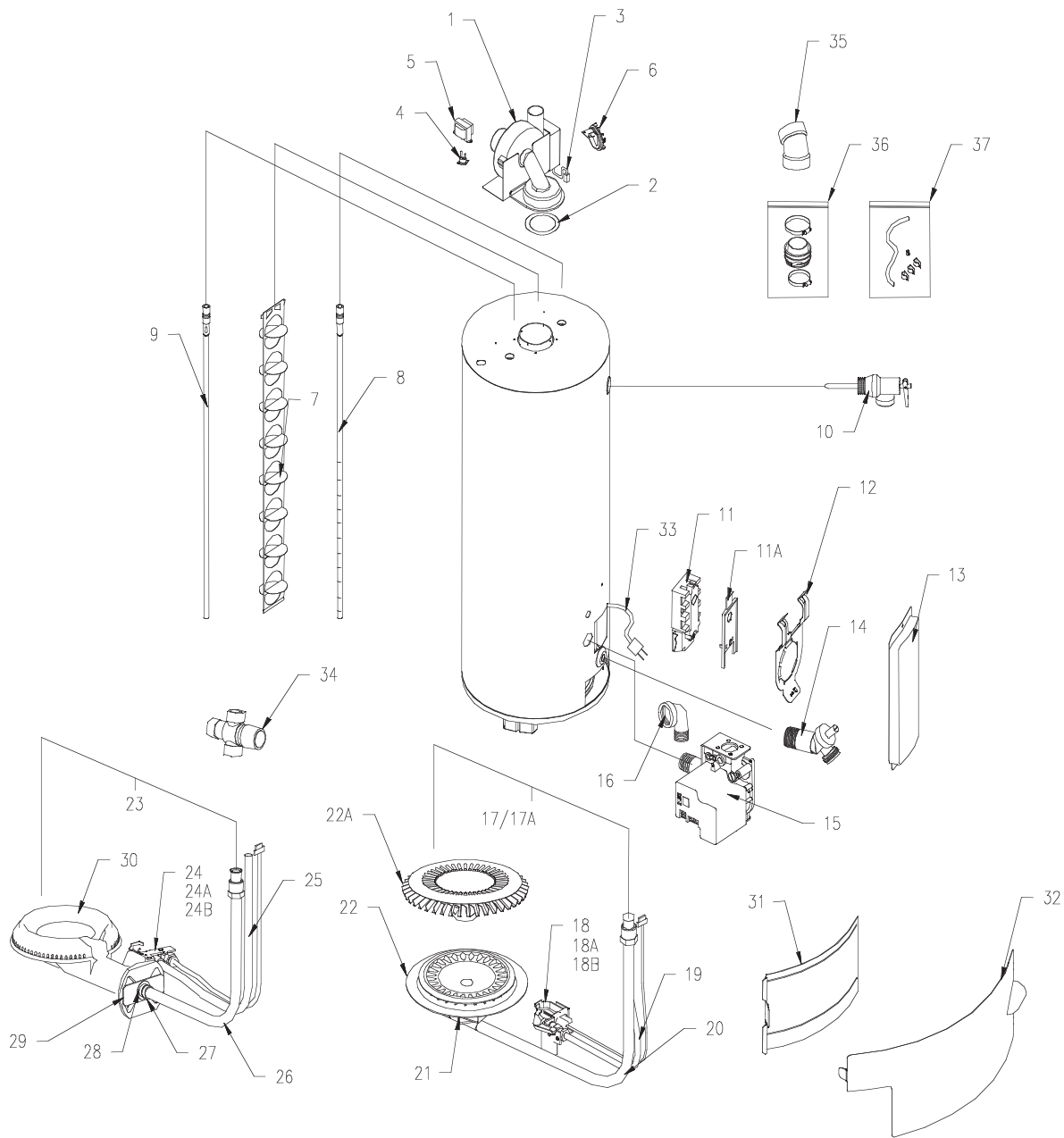


Includes Hydrojet[®]
Total Performance System

Effective: May 12, 2003
ECO 6751

**NOTE: BOTH MODEL AND SERIAL
NUMBERS ARE REQUIRED FOR
ORDERING REPLACEMENT PARTS**

Dimensions and specifications
subject to change without notice.



Reference Number & Description

- | | | |
|----------------------------|---------------------------------------|---------------------------|
| 1 Blower | 17 Burner Assembly Complete (40 gal) | 28 Washer Spring Crescent |
| 2 Blower Gasket | 17A Burner Assembly Complete (50 gal) | 29 Air Shutter |
| 3 Blower Harness | 18 Pilot Assembly with Tubing | 30 Cast Iron Burner Only |
| 4 Temperature Switch | 18A Pilot Only | 31 Inner Door |
| 5 Transformer | 18B Sensor & Igniter Only | 32 Outer Door |
| 6 Pressure Switch | 19 Pilot tube | 33 Power Cord |
| 7 Baffle | 20 Gas Feed Line | 34 Tempering Valve |
| 8 Dip Tube | 21 Main Burner Orifice | 35 Vent Terminal Elbow |
| 9 Anode | 22 BN Burner Only | 36 2" Exhaust Adapter Kit |
| 10 T & P Valve | 22A En Burner Only | 37 2" Condensate Kit |
| 11 Thermostat | 23 Cast Iron Burner Assembly Complete | |
| 11A Thermostat Protector | 24 Pilot Assembly with Tubing | |
| 12 Thermostat Bracket | 24A Pilot Only | |
| 13 Hand hole Cover | 24B Sensor & Igniter Only | |
| 14 "No" Handle Drain Valve | 25 Pilot Tube | |
| 15 Gas Valve | 26 Gas Feed Line | |
| 16 Street Elbow | 27 Main Burner Orifice | |

Parts Common To MITW(40, 50)L*(BN, EN) (-12, -13, -15) Models

Reference Number and Description	Part Number
1 Blower	239-41605-00
2 Blower Gasket	239-42326-00
3 Blower Harness	239-41865-00
4 Temperature Switch	233-41831-00
5 Transformer	233-41863-00
6 Pressure Switch	233-41830-00
7 Baffle	243-39998-00
8 Cold Water Inlet (Hydrojet) Assembly	229-39625-20
9 Hot Water Outlet / Magnesium Anode Assembly	224-32731-89
10 T&P Valve	230-32920-01
11 Thermostat	265-42034-00
11A Thermostat Protector	223-40399-00
12 Thermostat Bracket	239-40765-00
13 Hand Hole Cover	243-36618-02
14 Drain Valve	227-42351-01
15 Gas Valve Nat.	222-40762-01
16 Street Elbow	239-40779-00
18 Pilot Assembly (Nat) With Pilot Tube	233-40876-02
18A Pilot Only (Nat.)	233-40752-00
18B Flame sensor & Igniter Only (Nat.)	239-40918-00
19 Pilot Tubing	233-40767-03
21 Main Burner Orifice #32	234-41034-32
31 Inner Door	243-36739-02
32 Outer Door	243-41061-00
33 Power Cord	239-39772-00
35 Vent Terminal Elbow	239-39831-00
36 2" Exhaust Adaptor Kit	239-43847-00
37 2" Dia. Condensate Trap Kit	239-43869-00

Optional Parts Reference Number and Description

8 Cold Water Inlet (Hydrojet) Assembly (PSDTA) (NC Code)	229-39628-20
9 Hot Water Outlet / Aluminum Anode Assembly	224-32999-22
21 High Altitude Orifice 2000 Ft. to 5000 Ft.	234-41034-36
21 High Altitude Orifice 5001 Ft. to 8000 Ft.	234-41034-38
21 High Altitude Orifice Over 8000 Ft.	234-41034-38
34 Tempering Valve	239-43740-01

Optional Heat trap components -13 models

8 Cold Water Inlet (Hydrojet) HT Assembly (PPDTA)	229-39626-17
8 Cold Water Inlet (Hydrojet) HT Assembly (PSDTA) (NC Code)	229-39629-17
9 Hot Water Outlet / Magnesium HT Anode Assembly	224-33871-48
9 Hot Water Outlet / Aluminum HT Anode Assembly	224-33149-11

Parts Unique to MITW40L*(BN, EN) (-12, -13, -15) Models

Reference Number and Description	Part Number
17 Complete Burner Assembly Nat. Gas**	265-43992-01-32
20 Feedline Nat.	233-40783-01
22 BN Burner Only Nat. Gas	228-42506-00
22A EN Burner Only Nat. Gas	Order item 17

Parts Unique to MITW50L*(BN, EN) (-12, -13, -15) Models

Reference Number and Description	Part Number
17A Complete Burner Assembly Nat. Gas**	265-43995-01-32
20 Feedline Nat.	233-41180-00
22 BN Burner Only Nat. Gas	228-42506-00
22A EN Burner Only Nat. Gas	Order item 17A

* Applies to all warranties.

** Fits BN and EN Models.

Parts Common To MITW(40,50)L*CX (-12, -13, -15) Models

Reference Number and Description	Part Number
1 Blower	239-41605-00
2 Blower Gasket	239-42326-00
3 Blower Harness	239-41865-00
4 Temperature Switch	233-41831-00
5 Transformer	233-41863-00
6 Pressure Switch	233-41830-00
7 Baffle	243-39998-00
8 Cold Water Inlet (Hydrojet) Assembly	229-39625-20
9 Hot Water Outlet / Magnesium Anode Assembly	224-32731-89
10 T&P Valve	230-32920-01
11 Thermostat	265-42034-00
11A Thermostat Protector	223-40399-00
12 Thermostat Bracket	239-40765-00
13 Hand Hole Cover	243-36618-02
14 Drain Valve	227-42351-01
15 Gas Valve L.P.	222-40762-02
16 Street Elbow	239-40779-00
24 Pilot Assembly (LP) With Pilot Tube.	233-40877-02
24A Pilot Only LP.	233-40751-02
24B Flame Sensor & Ignitor Only LP.	239-40918-00
25 Pilot Tube	233-40767-02
27 Main Burner Orifice #50	234-35928-50
28 Washer Spring Crescent	239-40729-00
29 Air Shutter	239-35466-00
30 Cast Iron Burner Only	228-14173-00
31 Inner Door	243-36739-02
32 Outer Door	243-41061-00
33 Power Cord	239-39772-00
35 Vent Terminal Elbow	239-39831-00
36 2" Exhuast Adaptor Kit	239-43847-00
37 2" Dia. Condensate Trap Kit	239-42742-00

Optional Parts Reference Number and Description

8 Cold Water Inlet (Hydrojet) Assembly (PSDTA) (NC Code)	229-39628-20
9 Hot Water Outlet / Aluminum Anode Assembly	224-32999-22
27 High Altitude Orifice 2000 Ft. to 5000 Ft.	234-35928-51
27 High Altitude Orifice 5000 Ft. to 8000 Ft.	234-35928-52
27 High Altitude Orifice Over 8000 Ft.	234-35928-53
34 Tempering Valve	239-43740-01

Optional Heat trap components -13 models

8 Cold Water Inlet (Hydrojet) HT Assembly (PPDTA)	229-39626-17
8 Cold Water Inlet (Hydrojet) HT Assembly (PSDTA) (NC Code)	229-39629-17
9 Hot Water Outlet / Magnesium HT Anode Assembly	224-33871-48
9 Hot Water Outlet / Aluminum HT Anode Assembly	224-33149-11

Parts Unique to MITW40L*CX (-12, -13, -15) Models

Reference Number and Description	Part Number
23 Complete Cast Iron Burner Assembly LP Gas	265-40815-07-50
26 Feedline L.P.	233-40919-01

Parts Unique to MITW50L*CX (-12, -13, -15) Models

Reference Number and Description	Part Number
23 Complete Cast Iron Burner Assembly LP Gas	265-40815-08-50
26 Feedline L.P.	233-40919-03

* Applies to all warranties.



BRADFORD WHITE®

W A T E R H E A T E R S

Ambler, PA

For U.S. and Canada field service,
contact your professional installer or
local Bradford White sales representative.

Sales/800-523-2931
Fax/215-641-1670
Parts Fax/215-641-2180

Technical Support/800-334-3393
Fax/269-795-1089

Warranty/800-531-2111
Fax/269-795-1089

International:
Telephone/215-641-9400
Telefax/215-641-9750



BRADFORD WHITE-CANADA® INC.

Mississauga, ON

Sales/866-690-0961
905-238-0100

Fax/905-238-0105

Technical Support/800-334-3393

Email

parts@bradfordwhite.com
techserv@bradfordwhite.com

www.bradfordwhite.com

Free Manuals Download Website

<http://myh66.com>

<http://usermanuals.us>

<http://www.somanuals.com>

<http://www.4manuals.cc>

<http://www.manual-lib.com>

<http://www.404manual.com>

<http://www.luxmanual.com>

<http://aubethermostatmanual.com>

Golf course search by state

<http://golfingnear.com>

Email search by domain

<http://emailbydomain.com>

Auto manuals search

<http://auto.somanuals.com>

TV manuals search

<http://tv.somanuals.com>